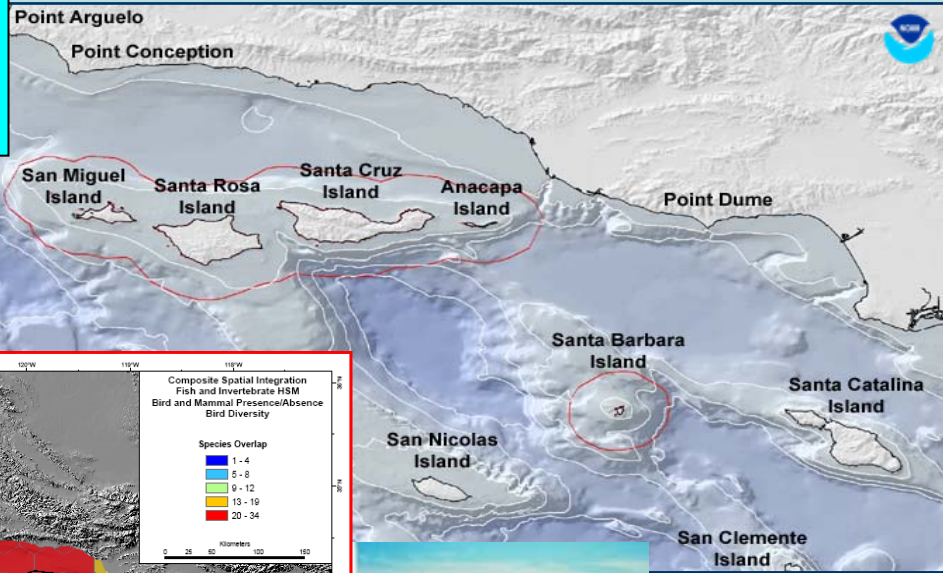


# Issue: Evaluate boundary expansion proposals

## Channel Islands National Marine Sanctuary (CINMS)



### NCCOS Program Goals & Objectives

**NCCOS Strategic Goal 1.1, 1.2, 1.3**  
 All NOAA-protected areas will have baseline assessments of ecological resources and will have integrated assessments  
 NCCOS will determine the effectiveness of coastal managers' decisions in NOAA-protected areas

### Issues & Problems

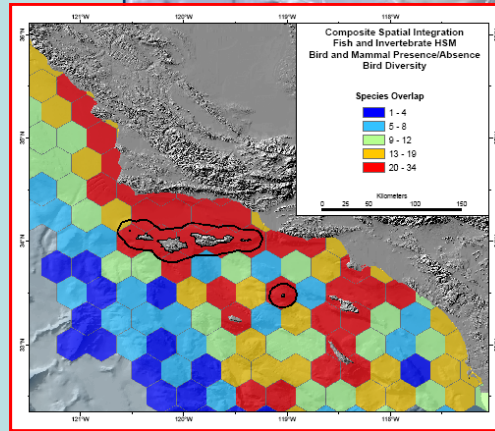
**NCCOS Societal Stressor 2.2, 2.3**  
 NCCOS will determine the social, economic, and biologic effects of human activities on specific coastal ecosystems  
 Coastal managers' capacities will be strengthened with the transfer of knowledge and tools from NCCOS research projects

### Research Response

**NCCOS Project Title**  
 "Biogeographic Assessment of Channel Islands National Marine Sanctuary to Support Boundary Alternative Assessments"  
 Randy.Clark@noaa.gov NPD Project Code 2F00006

### NMSP Management Need

To obtain the best available knowledge on the distribution of sanctuary resources to make an informed decision with respect to boundary expansion concepts



NOAA

### Performance Measures

### Characterization

**Performance Measures**

Spatial patterns of abundance and diversity in fish, invertebrates, mammals, and birds. Patterns in distribution of physical features of landscape.

**Characterization**

Compare measures within each boundary concept relative to current CINMS boundary

**Achievement of outcome:** Spatial characterization of the living marine resources within and around CINMS for evaluation of boundary alternatives

### Adaptive Management & Research Refinement

