

Scientific Name: *Astragalus yoder-williamsii* Barneby

Bibliographic Reference: Barneby, 1980. Britt. 32:30.

Common Name: Osgood Mountain milkvetch

Family (Common Name): Fabaceae or Leguminosae (Pea Family)

Idaho Native Plant Society Category: Global Priority 3

Natural Heritage Program Rank: S3

Distribution: Restricted to the upper forks of the Owyhee River in Owyhee County, Idaho; and ec Humboldt County, Nevada.

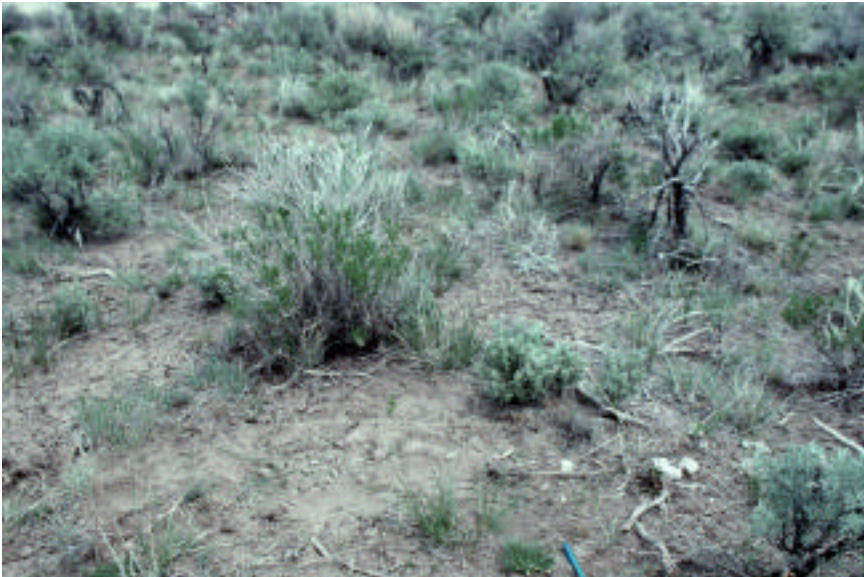
Habitat: Decomposed granitic soils in Nevada. Idaho populations occur on fine loamy soils in low sagebrush, big sagebrush, or rabbitbrush communities, from 1575-2170 m elevation.

Look-alikes: According to Barneby (1989), "this species suggests a diminished and condensed *A. mulfordiae*...but differs in the densely tufted habit, stiffly erect persistent leaf-stalks, minute leaflets and smaller pod."



Closeup of *Astragalus yoder-williamsii*

Bob Moseley



Habitat of *Astragalus yoder-williamsii*

Bob Moseley

Species
Distribution

