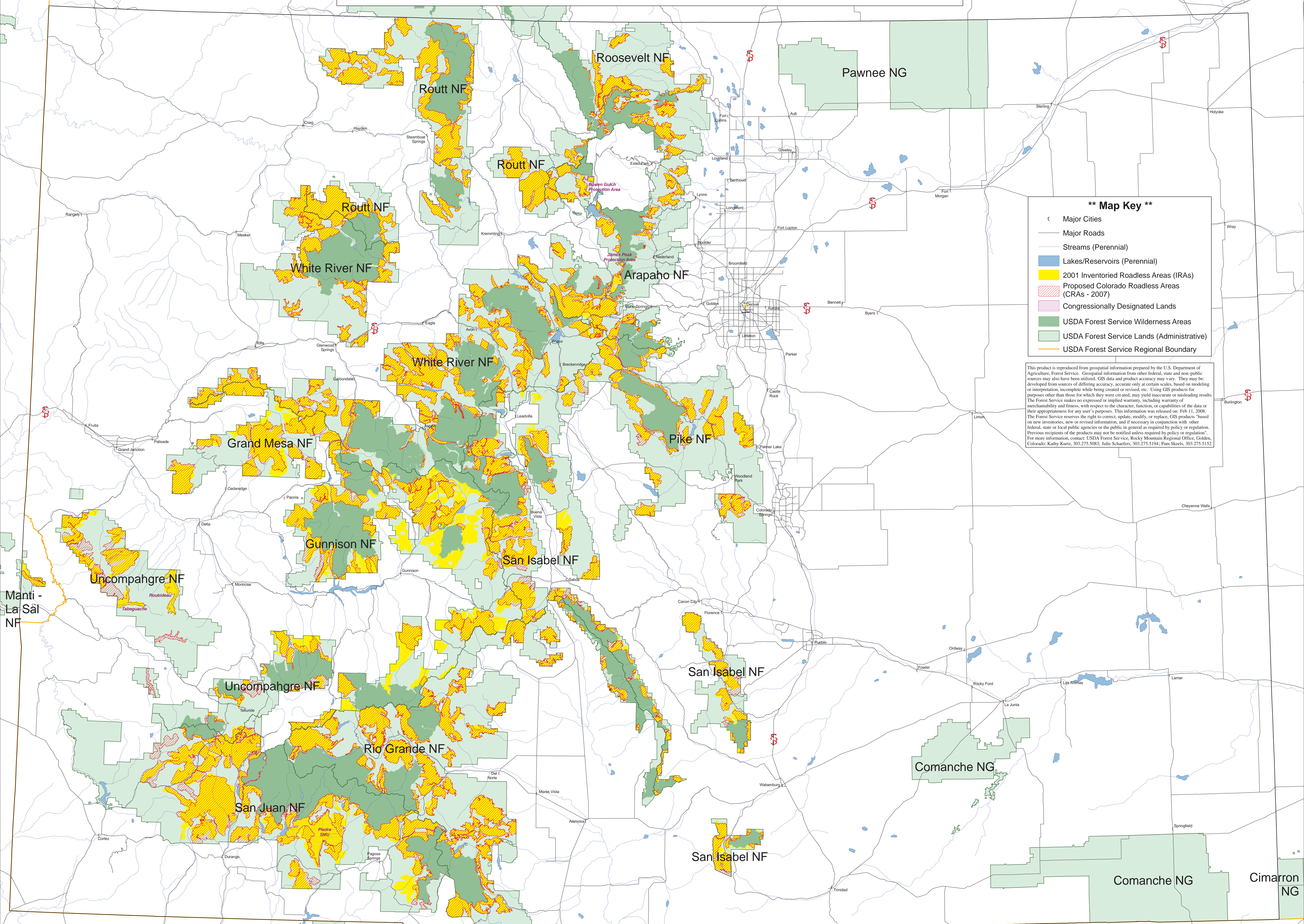


COLORADO ROADLESS AREAS



**** Map Key ****

- Major Cities
- Major Roads
- Streams (Perennial)
- Lakes/Reservoirs (Perennial)
- 2001 Inventoried Roadless Areas (IRAs)
- Proposed Colorado Roadless Areas (CRAs - 2007)
- Congressionally Designated Lands
- USDA Forest Service Wilderness Areas
- USDA Forest Service Lands (Administrative)
- USDA Forest Service Regional Boundary

This product is reproduced from geospatial information prepared by the U.S. Department of Agriculture, Forest Service. Geospatial information from other federal, state and non-public sources may also have been utilized. GIS data and product accuracy may vary. They may be developed from sources of differing accuracy, accurate only at certain scales, based on modeling or interpretation, incomplete while being created or revised, etc. Using GIS products for purposes other than those for which they were created, may yield inaccurate or misleading results. The Forest Service makes no expressed or implied warranty, including warranty of merchantability and fitness, with respect to the character, function, or capabilities of the data or their appropriateness for any user's purposes. This information was released on: Feb 11, 2008. The Forest Service reserves the right to correct, update, modify, or replace, GIS products based on new inventories, new or revised information, and if necessary in conjunction with other federal, state or local public agencies or the public in general as required by policy or regulation. Previous recipients of the products may not be notified unless required by policy or regulation. For more information, contact: USDA Forest Service, Rocky Mountain Regional Office, Golden, Colorado: Kathy Kurtz, 303.275.5083; Julie Schaefer, 303.275.5194; Pam Skeels, 303.275.5152