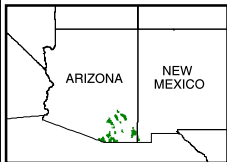
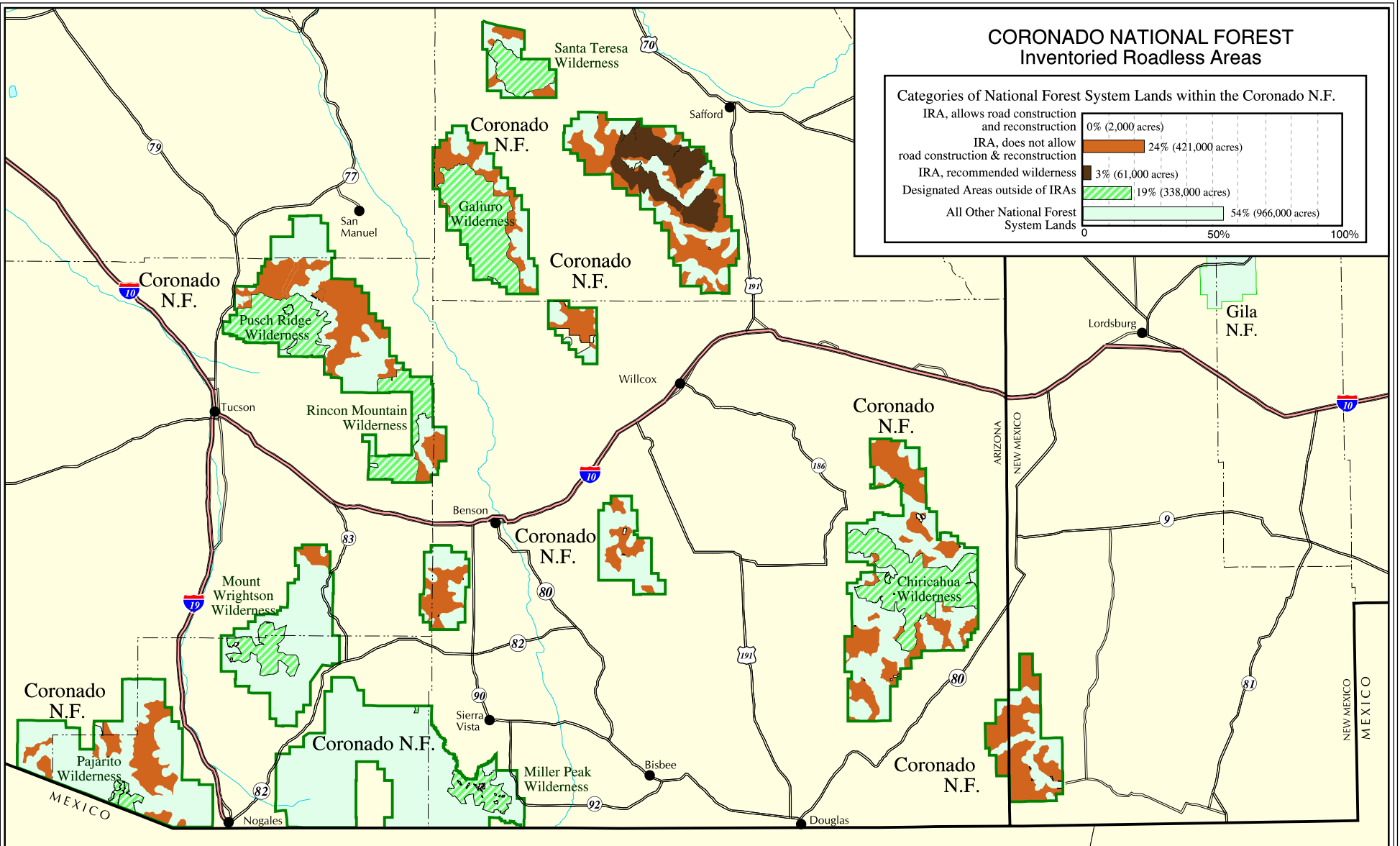
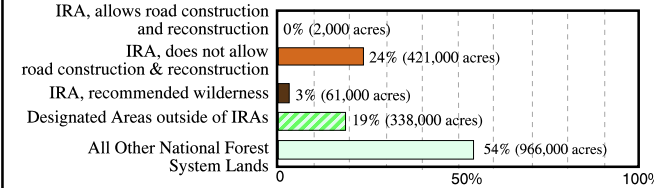


CORONADO NATIONAL FOREST Inventoried Roadless Areas

Categories of National Forest System Lands within the Coronado N.F.



The USDA Forest Service uses the most current and complete data available. GIS data and product accuracy may vary. Using GIS products for purposes other than those for which they were intended may yield inaccurate or misleading results. The USDA Forest Service reserves the right to correct, update, modify, or replace GIS products without notification.



September 15, 2000
Data Supplied by Coronado National Forest
Contact: Coronado N.F.
300 W. Congress
Tucson, AZ 85701
(520) 670-4552

- Inventoried Roadless Area where road construction or reconstruction is allowed
- Inventoried Roadless Area where road construction or reconstruction is not allowed, and the forest plan recommends as wilderness
- Designated Areas outside of Inventoried Roadless Areas
- National Forest System lands outside of Inventoried Roadless Areas - not all private land is shown on the map
- Interstate Highway
- Other Highways
- County boundaries

