



United States
Department of
Agriculture

Forest Service

Idaho
National Forests

October 2008

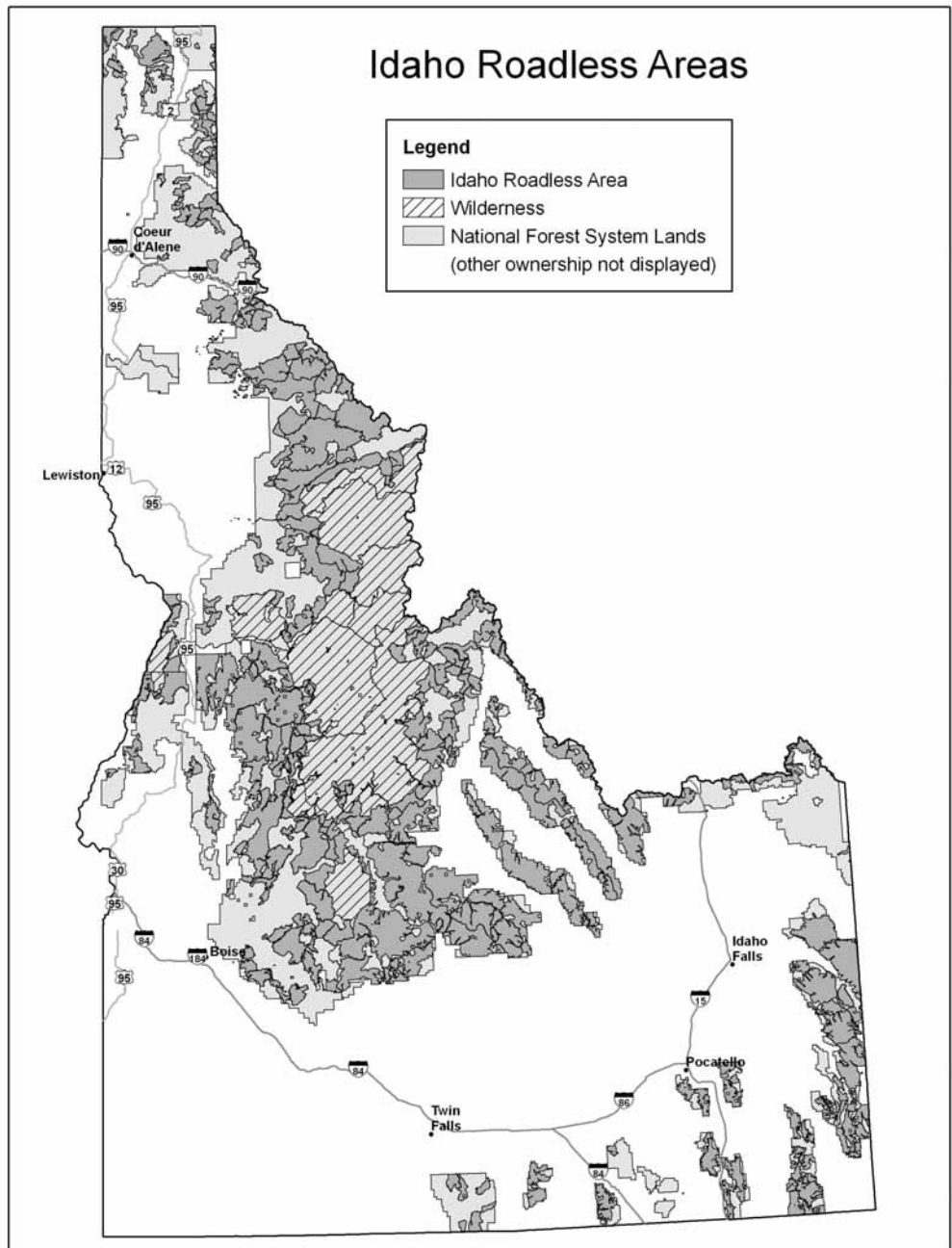


Roadless Area Conservation

National Forest System Lands in Idaho

Final Environmental Impact Statement

Errata October 10, 2008



The U.S. Department of Agriculture (USDA) prohibits discrimination in all its programs and activities on the basis of race, color, national origin, gender, religion, age, disability, political beliefs, sexual orientation, or marital or family status. (Not all prohibited bases apply to all programs.) Persons with disabilities who require alternative means for communication of program information (Braille, large print, audiotope, etc.) should contact USDA's TARGET Center at (202) 720-2600 (voice and TDD). To file a complaint of discrimination, write USDA, Director, Office of Civil Rights, Room 326-W, Whitten Building, 1400 Independence Avenue, SW, Washington, DC 20250-9410 or call (202) 720-5964 (voice and TDD). USDA is an equal opportunity provider and employer.

ERRATA

NATIONAL FOREST SYSTEM LANDS IN IDAHO FINAL ENVIRONMENTAL IMPACT STATEMENT

Minor corrections to the final Environmental Impact Statement (EIS) Section 3.9 Terrestrial Animal Habitat and Species and the Literature Cited section in Volume 1 and appendix M Terrestrial Species in Volume 2 are made with this errata sheet. These corrections do not alter the findings in effects analysis; except for the southern Idaho ground squirrel which was found to not occur on National Forest System (NFS) lands.

The following summarizes the changes.

Corrections are made regarding the southern Idaho ground squirrel. In the final EIS the analysis for the southern Idaho ground squirrel used the same predicted habitat information as the northern Idaho ground squirrel. However, these ground squirrels use different habitat components. No information is available at this time for predicted habitat for southern Idaho ground squirrels. In addition, no southern Idaho ground squirrels are known to occupy NFS lands, including Idaho Roadless Areas. All known populations are on private, Bureau of Land Management or State of Idaho lands. The final EIS has been corrected to reflect this information, see changes reflected on pages 278, 279, 283, 284, 297, 303, 308.

Other minor corrections have been made to various numbers in the text – see pages 279-283, 295, 297, 298, 302, 303, 304, 307, 308, and 309. Exhibit 1a provides the reader with a version that shows where the changes were made. Exhibit 1b is the updated version of Section 3.9 Terrestrial Animal Habitat and Species.

Corrections were made in the Literature Cited section. Exhibit 2a provides the reader with a version that shows where the changes were made. Exhibit 2b is the updated version of the Literature Cited section.

Corrections were also made in appendix M Terrestrial Species, including minor corrections to numbers and corrected information for southern Idaho ground squirrel. Tables M-2, M-4, M-8 and M-12 were corrected. In addition, a new table, table M-10a has been added. Table M-10a provides additional information regarding migratory birds and was inadvertently not included.

Exhibit 3a provides the reader with a version that shows where the changes were made to the tables in appendix M Terrestrial Species. Exhibit 3b is the updated version of appendix M Terrestrial Species.

Please recycle this document when it is ready to be discarded.

