



United States
Department of
Agriculture

Forest Service

Idaho
National Forests

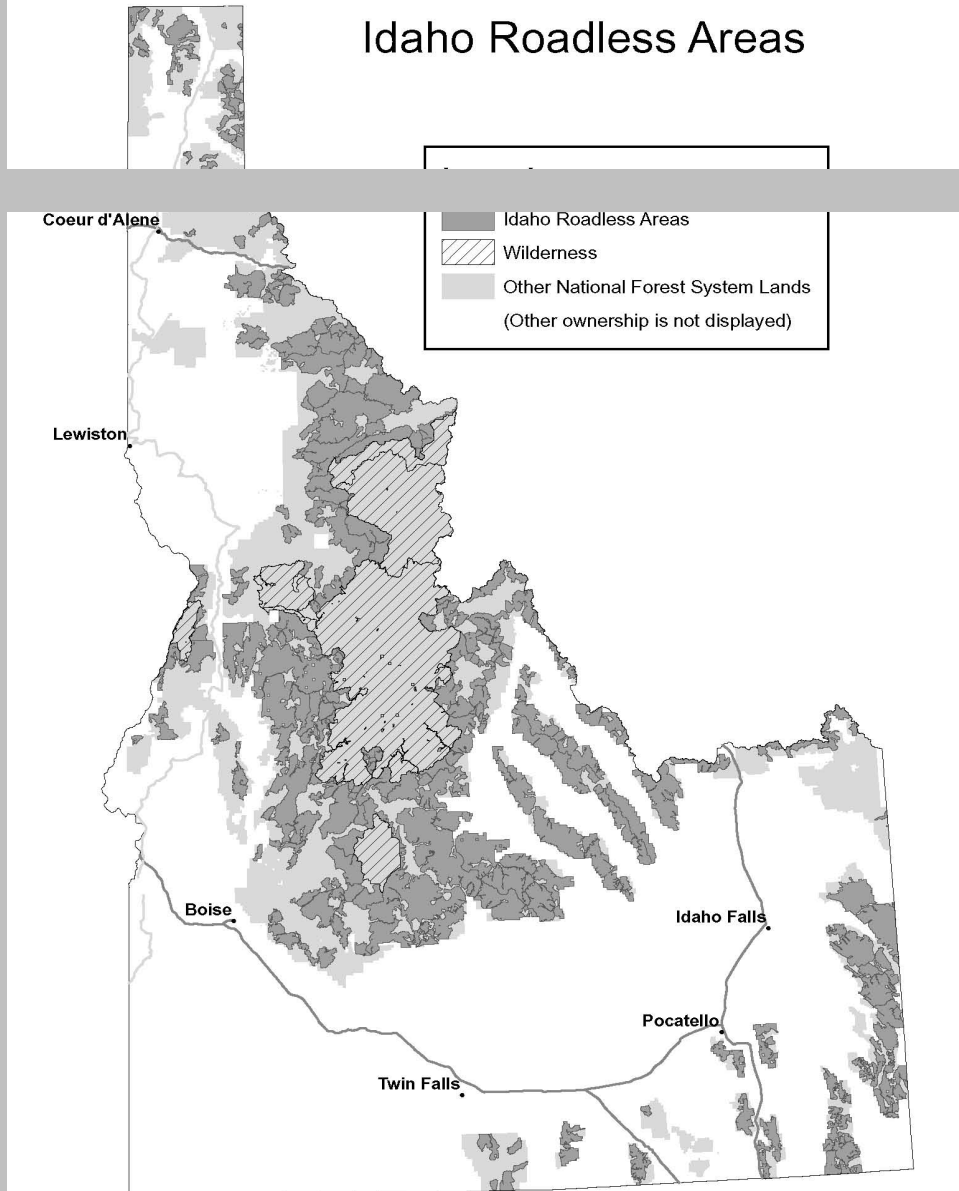
August 2008



Roadless Area Conservation National Forest System Lands in Idaho

Final Environmental Impact Statement – ERRATA

Idaho Roadless Areas



ERRATA August 29, 2008

Correction to Comparison of Alternatives table – Summary table S-3 and FEIS table 2.4

Summary (standalone document page 18)

Final EIS – pages Summary-18 and page 84

Numbers and text in **bold** - corrected

	2001 Roadless Rule	Existing Plans	Proposed Rule	Modified Rule
Timber cutting				
Labor Income per year	\$452,700	\$1,902,800	\$849,600	\$741,900

Final EIS, page 400 – 401

Replace last paragraph

Potential timber harvest under Existing Plans over the next 15 years is projected to occur on about 40,500 acres (200.4 MMBF) with around 47 percent coming from the North Idaho economic area and 37 percent from the Central Idaho economic area (table 3-73). About **165** miles of road construction/reconstruction are projected to facilitate timber cutting. In addition, 15 miles of road are projected to be constructed/reconstructed to facilitate mineral access and roaded access in response to valid existing rights. In addition, about 48 miles of road decommissioning are projected to be accomplished over the next 15 years.
