



Protected Under 18 U.S.C. 707

We All Live On The Water's Edge



C.K. Harris, M. K. Bowling, S. Wenta and V. Wright



Protected Under 18 U.S.C. 707

The University of Arkansas Cooperative Extension Service has been providing water quality education to youth in the Millwood Lake Watershed in Southwest Arkansas since 1992. Initial efforts of the five-county program were borne out of the Lake Millwood HUA grant funded by USDA and are currently supported by an EPA watershed grant in the Lower Little River watershed.

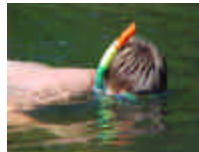
A curriculum entitled, "The Water's Edge" has been used with 5th and 6th grade classes in several school districts throughout the watershed. Each spring, the effort culminates with over 800 participating youth attending the Millwood Water Carnival. Several state and federal agencies assist with the Carnival and provide a wide array of water quality educational programs and fun.

Water quality education is also provided through 4-H conservation clubs, 4-H stream teams, and other 4-H environmental programs.

Finally, water quality education is provided to youth ranging from Kindergarten to High School through Extension's School Enrichment Program and field trips.



Extension provides school enrichment Programs that include water quality field trips and farm visits.



The Millwood Water Carnival is a reward For students who have participated in the "The Water's Edge Program". It combines outdoor educational workshops with lots of fun.



Extension offers a variety of water quality opportunities for youth including stream teams, "Save Our Streams" (SOS), Project WET and WILD activities. Extension has partnered with the Arkansas Game and Fish Commission to develop 4-H Stream teams. These 4-H clubs adopt stream segments to monitor water quality, aquatic wildlife, and maintain the natural scenic beauty.



"The Water's Edge" and other school enrichment programs are presented in the classroom at cooperating schools. These programs emphasize environmental awareness, natural resource conservation, and that protecting water quality is everyone's responsibility.

Partners

Arkansas State Parks Arkansas Forestry Commission US Corps of Engineers Arkansas Game and Fish Commission NRCS Arkansas Department of Environmental Quality

