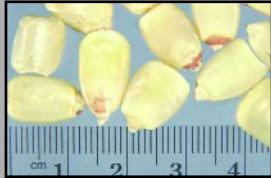


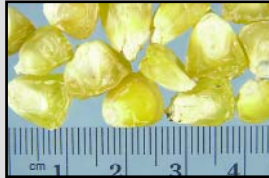
Seed Identification

SEED IDENTIFICATION

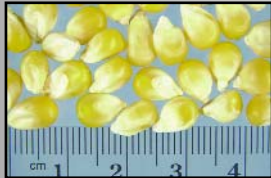
Identification of seed is an important part of the 4-H Seed Judging and Identification Contest. You will be asked to identify samples of real seed in the contest. These colored pictures and seed descriptions will help you prepare for the contest. The ruler is pictured to help you relate size of seed.



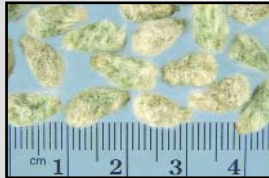
FIELD CORN



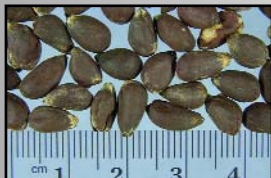
SWEET CORN



POPCORN -
pearl-shaped



GIN RUN COTTONSEED -
linters (short fibers)



ACID-DELINTED COTTONSEED -
linters removed; treated seeds can be various colors



RICE -
light brown color; overall appearance always the same, rectangular shape



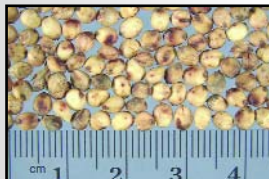
WHEAT -
has a "brush" on one end; a deep groove found on the ventral side



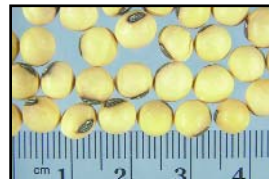
OATS -
may vary in color from reddish to white



RYE -
brown to metallic green seed, cylindrical, pointed



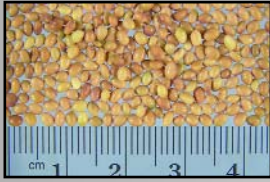
SORGHUM -
oval-shaped; smooth surface, white, red or black



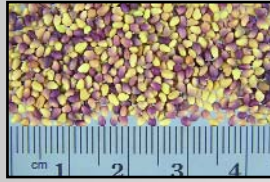
SOYBEANS -
variable in size and color; usually yellow, can be brown or black; smooth, hilum color will vary



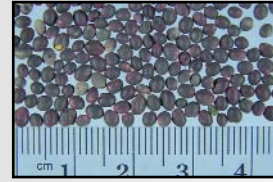
This publication is to be used in conjunction with Extension publication 464 4-H Seed Judging.



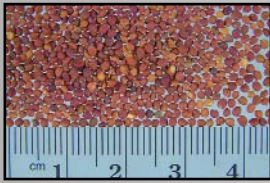
CRIMSON CLOVER -
large when compared to other clovers; light tan color; oval-shaped; smooth to smooth-glossy



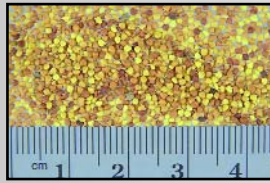
RED CLOVER -
mitten-shaped; color varies from yellow to brown to purple in the same sample



SUBTERRANEAN CLOVER -
large for clover seed; round, purple-black



ARROWLEAF CLOVER -
heart-shaped; color varies from red to burnt orange to black in the same sample, rough



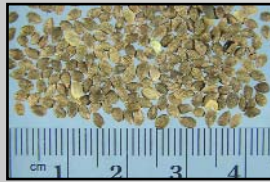
WHITE CLOVER -
seed small, heart-shaped; color ranges from yellow to dark brown in the same sample



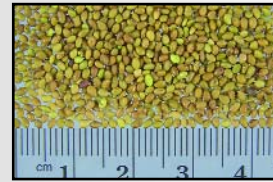
ALFALFA -
kidney-shaped; yellowish-brown, sometimes with a green tinge



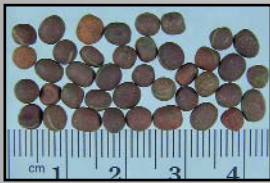
KOBE LESPEDEZA -
usually unhulled, hairy, brown pods; hulled seed, purplish



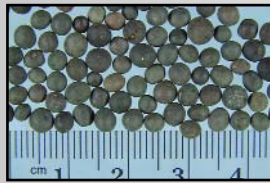
KOREAN LESPEDEZA -
larger than Kobe; little or no hairs on pods; veins in pod darker; hulled seed, purplish



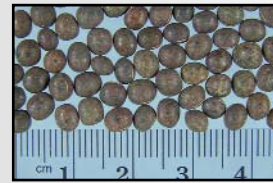
SERICEA LESPEDEZA -
seed usually hulled; light brown to green flecked with purple; dark reddish pod



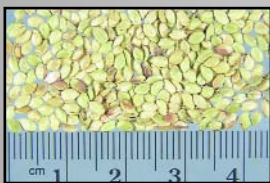
WILD WINTER PEAS -
rounded, rough seed coat; gray to black color



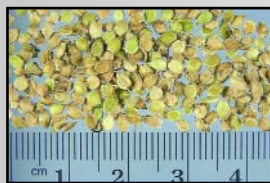
HAIRY VETCH -
seed size variable; smooth, dull black color



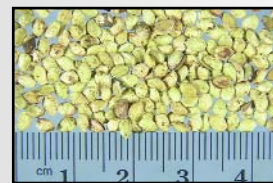
COMMON TYPE VETCH -
seed size very variable; reddish-brown to greenish-brown, mottled



PENSACOLA BAHIAGRASS -
light to straw-green; slightly longer than wide; smooth



DALLISGRASS -
hairy; color and size similar to Pensacola bahiagrass



ARGENTINE BAHIAGRASS -
larger than Pensacola; more wrinkled; similar color



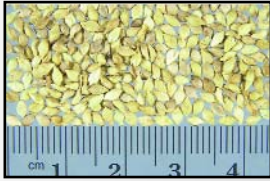
RYEGRASS -
has an awn or remains; awn end tapers; other end wide, rounded, flared



FESCUE -
resembles ryegrass; no awn; broadest midways, long pointed at apex



COMMON BERMUDAGRASS -
very small; unhulled, light tan; hulled, brown



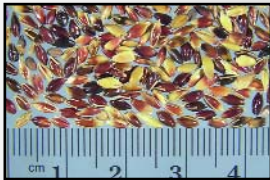
BROWN TOP MILLET -
usually in a hull; light brown color



PEARL MILLET -
seed resemble pearls



SUDANGRASS -
similar to johnsongrass; usually larger and lighter color, smooth



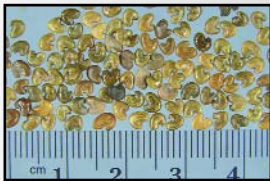
JOHNSONGRASS -
brown, light to black with gradations, smooth and shiny



COCKLEBUR -
sometimes despined in ginning, brown with hooked spines



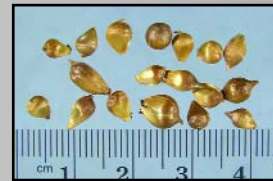
DOCK -
triangular; light to dark brown



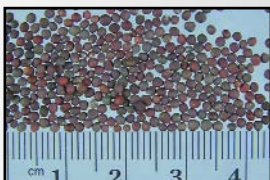
CROTALARIA -
flat, kidney-shaped



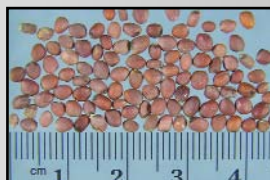
CHEAT -
elliptic, long, smooth brown; short awn



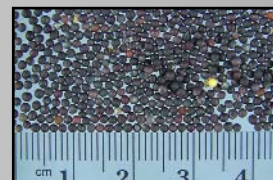
WILD GARLIC -
bulblets; not true seed



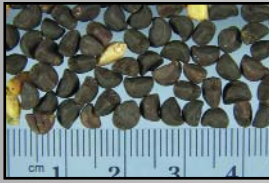
WILD TURNIP -
resembles cultivated varieties



WILD RADISH -
resembles cultivated varieties



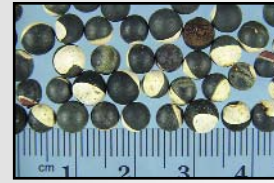
WILD MUSTARD -
resembles cultivated varieties



COMMON MORNINGGLORY -
*black to brown; shaped like sections
of an orange*



PURPLE MOONFLOWER -
*large, dark brown; smooth, two
flat sides*



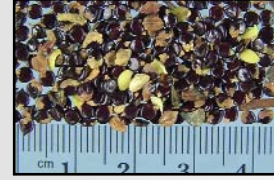
BALLOONVINE -
black and white on same seed, smooth



**HEMPESBANIA OR
SESBANIA** -
dark brown; oblong or round



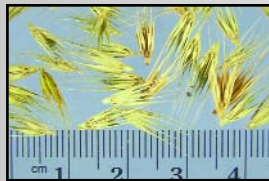
SICKLEPOD -
*smooth; brown; ends appear
"chopped off"*



SMARTWEED -
*shiny, dark brown to purple to black; flat or
rounded; triangular; pointed at one end*



TEAWEED -
dull brown; two spikes at one end



WILD BARLEY -
*straw-colored; very chaffy; several
spikelike projections*



RED RICE -
*rice-shaped; straw-colored to blackish-gray
with or without awns; hulled seed, red to
blackish-red*

You are encouraged to make your own seed collection. This will help you to identify the plant from which the seed comes. You could use your collection as an exhibit at 4-H events.

If you make a collection, thoroughly dry the seed; place them in small glass or plastic bottles; put a few moth crystals in the bottle for insect control.

Label your bottles with the name of the seed. This will help others learn to identify seed.

Mississippi State
UNIVERSITY
Extension
SERVICE

msucares.com

Distributed by **Dennis Reginelli, Ph.D.**, area extension agent

Photography by **Marco Nicovich**, Research Photographer and Darkroom Manager.

Mississippi State University does not discriminate on the basis of race, color, religion, national origin, sex, sexual orientation, group affiliation, age, disability, or veteran status.

Publication 1397

Extension Service of Mississippi State University, cooperating with U.S. Department of Agriculture. Published in furtherance of Acts of Congress, May 8 and June 30, 1914. **JOE H. MCGILBERRY**, Director

(rev-1M-2-05)