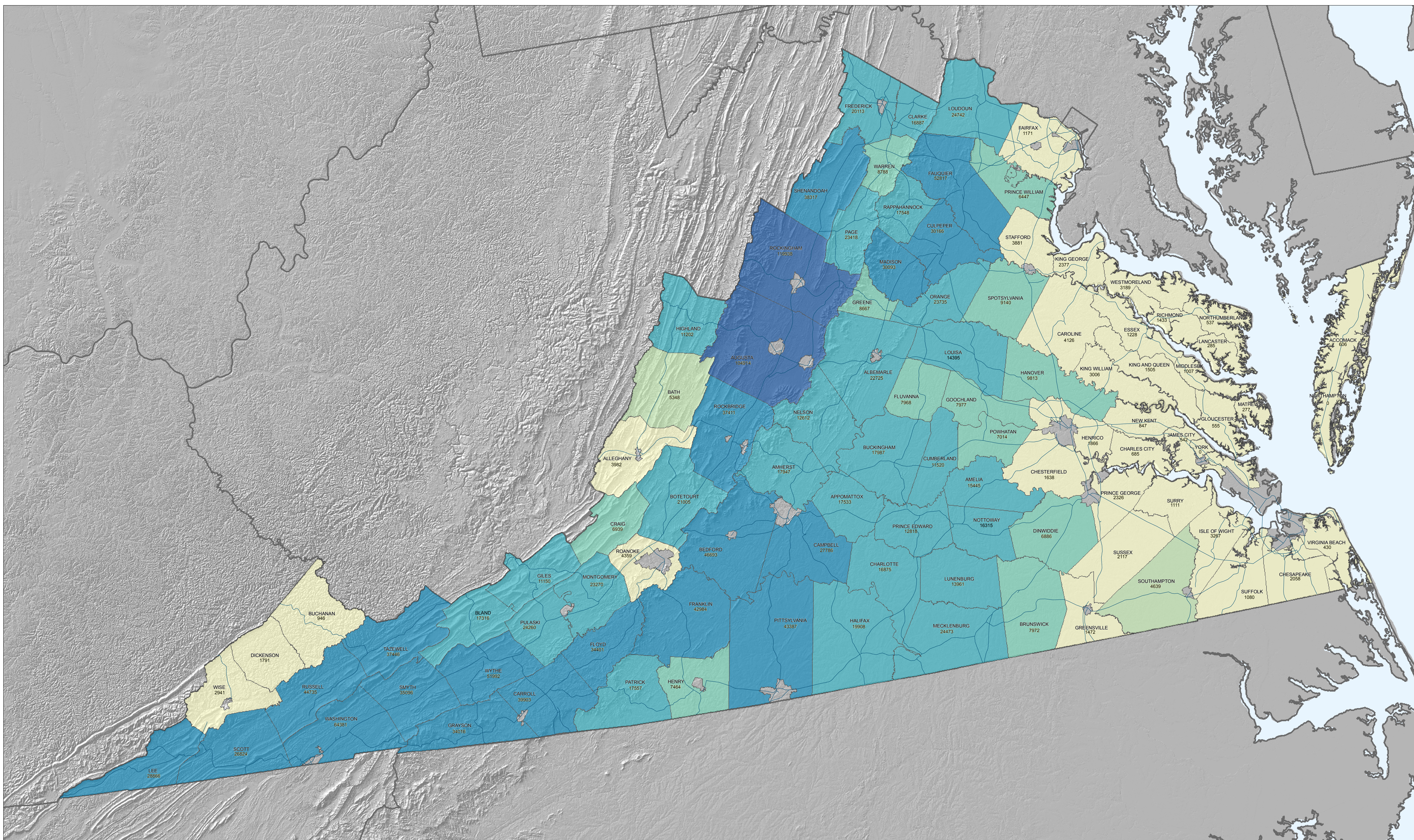


2002 Ag Census: Total Head of Cattle per County - Virginia (2008)



Cattle Population: 2002 National Agriculture Census

Total head of cattle per county estimated from the National Agriculture Statistics Service 2002 Ag Census (http://www.nass.usda.gov/Census_of_Agriculture/index.asp).

To create this map, select the query State-County from the Query and Downloadable Options dropdown menu, and then choose Table 11 Cattle and Calves -Inventory and Sales: 2002 and 1997.

Next, select the row Inventory - Cattle and calves (number, 2002). Select a Primary Location (a state) and a Secondary Location (All Counties) and add to Selected Locations, then click Get Data. Scroll to the bottom of the table and download a CSV or GIS-ready data file. Map the field containing the total number of cattle per county.

This map is a general planning aid based on the best available data, and does not necessarily reflect the actual number of cattle in any given county in 2007. For counties with only one cattle farm or dairy, the number of cattle in that county was mapped as zero.

A regional legend based on cattle populations in Gulf Coast and Eastern Seaboard states was developed. Classes were computed using the geometric interval classification scheme, then rounded for ease of interpretation. Not all classes will appear in every state.

