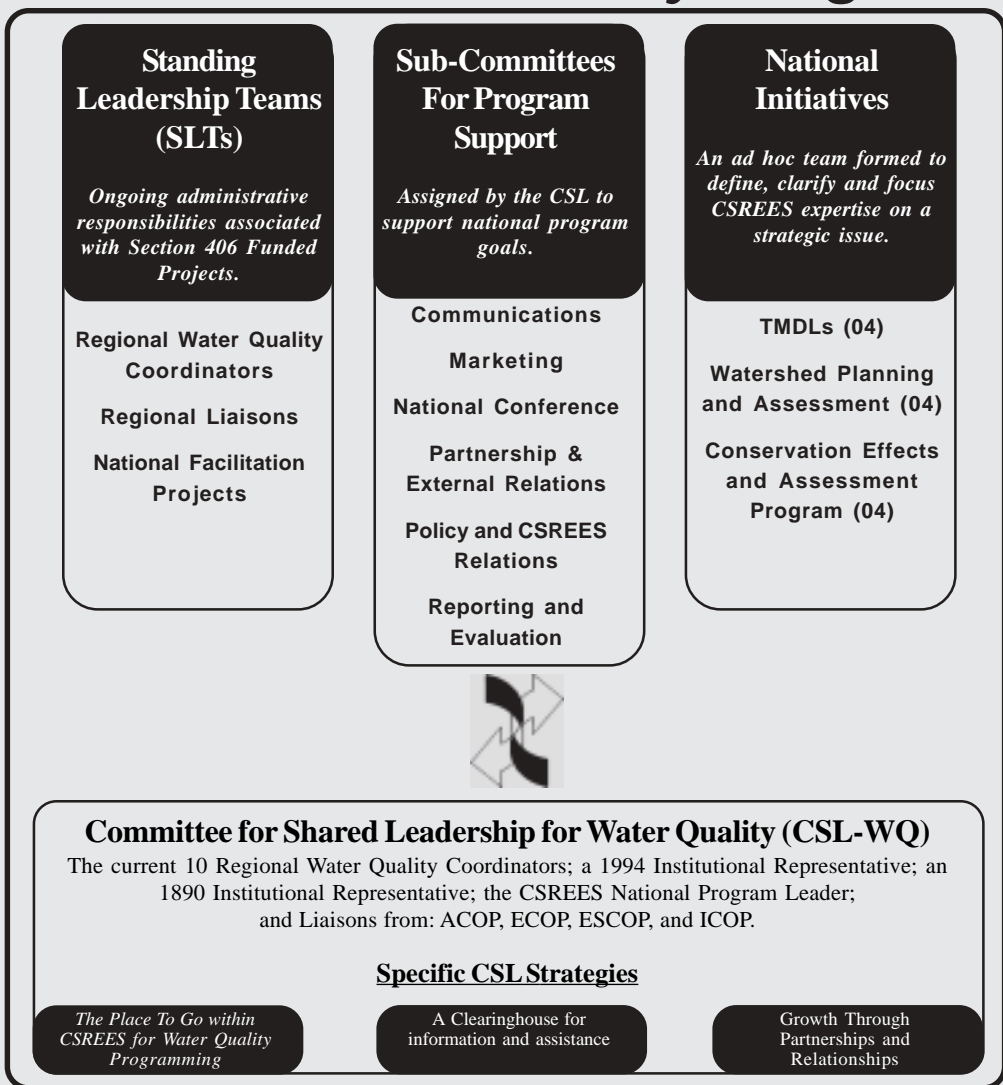


A Model for Shared Leadership of CSREES Water Quality Programs



Shared leadership is an important element in the relationship among state, regional and federal CSREES partners. By empowering state and regional water quality coordinators and staff through Leadership Teams and Sub-Committees for Program Support, a dynamic and innovative approach to national shared leadership will be fostered through a Committee for Shared Leadership (above).

A Commitment to Shared Leadership

In 1997, state water quality coordinators gathered in Kansas City and recommended to their deans and directors the formation of the National Water Quality Leadership Team (NWQLT). Since that time, the role of NWQLT has grown, and so has the CSREES National Program for Water Quality. In 2000, Section 406 of the Agricultural Research, Extension and Education Reform Act (AREERA) authorized the Secretary of Agriculture to establish a research, education and extension competitive grants program for water quality. The "406" National Integrated Water Quality Program (NIWQP) fostered a national network based on regional land grant university partnerships in each of the 10 Environmental Protection Agency regions. This regional approach, while offering greater opportunity for national coordination, presents unique challenges summarized in the Goals for Shared Leadership (right).

Goals for Shared Leadership

- ◆ Foster a national program through a regional network of CSREES research, education and extension professionals.
- ◆ Elevate the visibility of the CSREES network.
- ◆ Be responsive and proactive in decisions and actions that integrate research, education and extension activities.
- ◆ Create, manage and foster institutional change through visioning and leadership.
- ◆ Practice effective communication and dialog to ensure cooperation and collaboration of integrated programs.
- ◆ Pursue new opportunities in a coordinated fashion.
- ◆ Market the value of internally and externally funded/leveraged activities.
- ◆ Establish partnerships and work to meet common goals.

The concepts and ideas represented in this discussion paper have been developed through an on-going visioning process with CSREES Committee for Shared Leadership - Water Quality (CSL-WQ).



The U.S. Department of Agriculture (USDA) prohibits discrimination in all its programs and activities on the basis of race, color, national origin, sex, region, age, disability, political beliefs, sexual orientation, and marital or family status.