

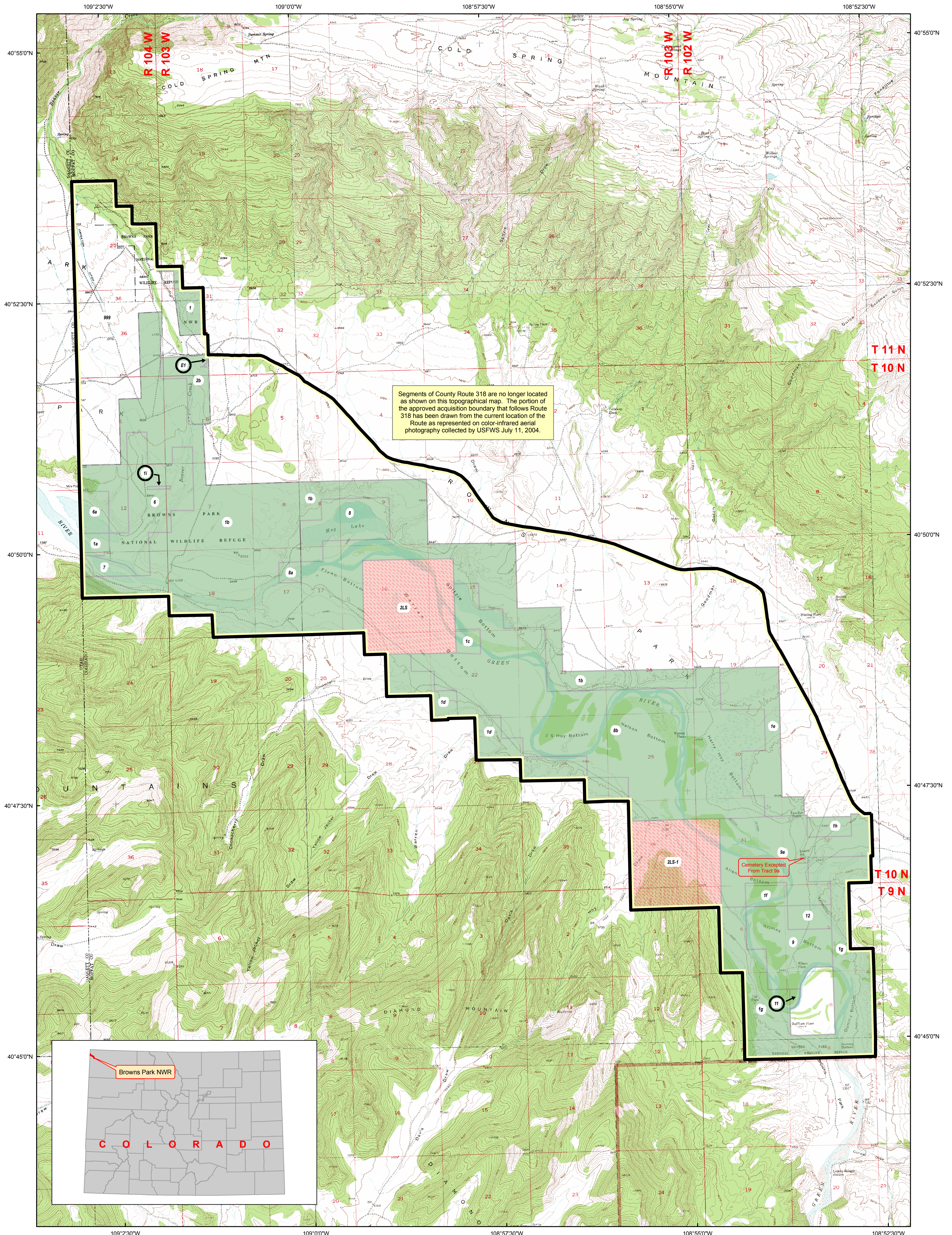


U.S. Fish & Wildlife Service

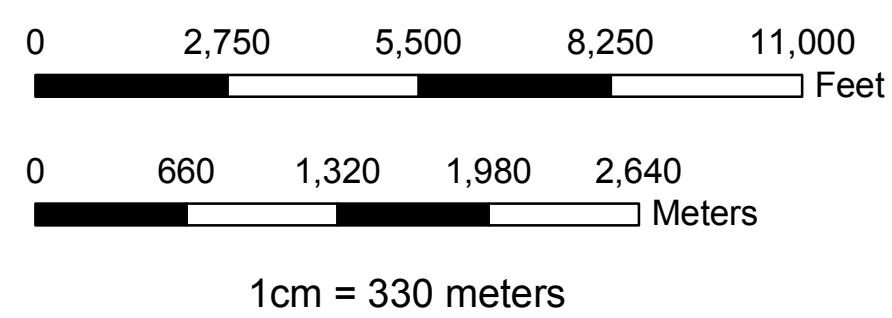
# Browns Park National Wildlife Refuge

Moffat County, Colorado

Land Status



PRODUCED IN THE DIVISION OF REALTY  
 LAKEWOOD, CO  
 MAP CURRENT TO: Status  
 Atlas (series of 4 maps) on 1/25/05  
 BASE MAP SOURCE: USGS 7.5' DRG  
 SIXTH Principal Meridian  
 UTM NAD27 Zone 12  
 MAP PRODUCED 12/19/05  
 MAP NAME: brpbnd\_utm27.mxd



|  |                               |
|--|-------------------------------|
|  | Approved Acquisition Boundary |
|  | Fee Tracts                    |
|  | Lease Tracts                  |
|  | Inholdings                    |
|  | 8b(11) Tract Numbers          |

