

# Land Status Style Sheet



U.S. Fish & Wildlife Service

## Mingo National Wildlife Refuge

Stoddard & Wayne Counties, Missouri

Land Status

### Land Status Symbols:

Service Interest	RGB
Fee	115, 178, 115
Less than fee - Easements and Leases	230, 85, 58
Secondary / Partial Interest / Life Estate	0, 92, 230
Agreement	205, 170, 102
Outgrant	115, 178, 115
Divested / Transferred / Exchanged from USFWS	255, 170, 0
Transfer to USFWS	170, 102, 205
Private	

Approved Acquisition Boundary	
Wilderness	
Outgrant (Right-of Way, Utilities)	

### Fill Options for Color

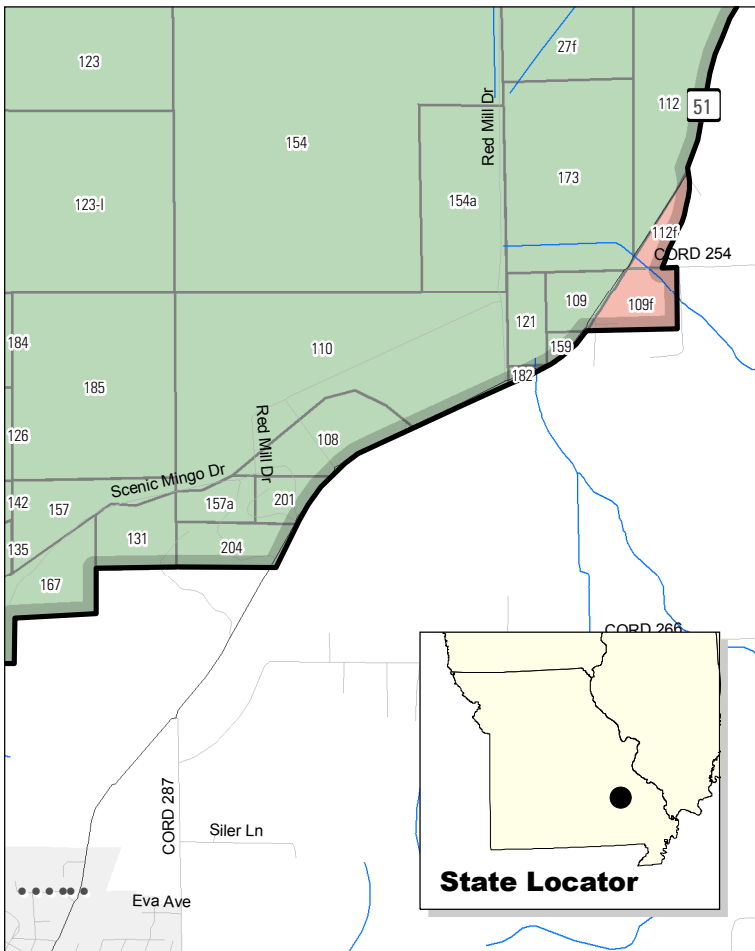
50% opacity	50% + hatch	color hatch

### Black and White

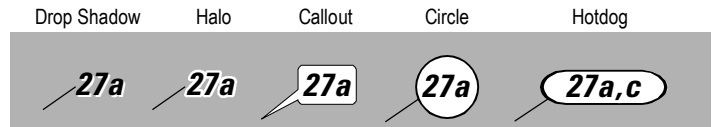
hatch	
	linetype, angle, spacing, line width
	solid, 135, 3, .1
	dashed 4:4, 135, 5, .7
	solid, 45, 3, .1
	dashed 4:1, 45, 3, .1
	solid, 135, 3, .1 + dashed 45, 3, .1
	dashed 4:4, 0, 3, .1
	marker #6, grid, 0, 7, .1

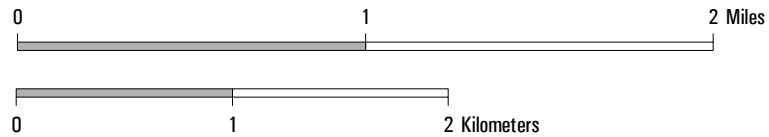

### Status Map Example



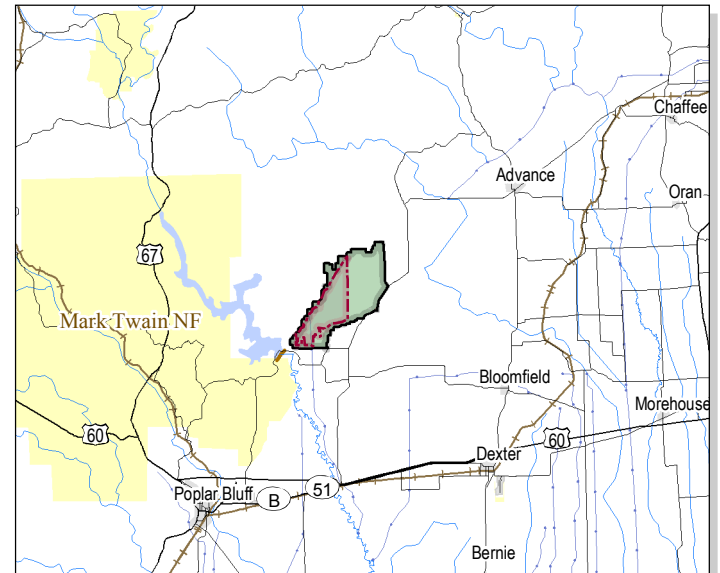
### Tract Number Options



### Scale Bars



### Vicinity Map



### Map Notes

PRODUCED IN THE DIVISION OF (name of Division)  
 CITY, STATE (2-letter abbreviation)  
 LAND STATUS CURRENT TO: (date)  
 BASE MAP SOURCE: (data source or sources and date of data, e.g. DOQs)

### North Arrow Options

