

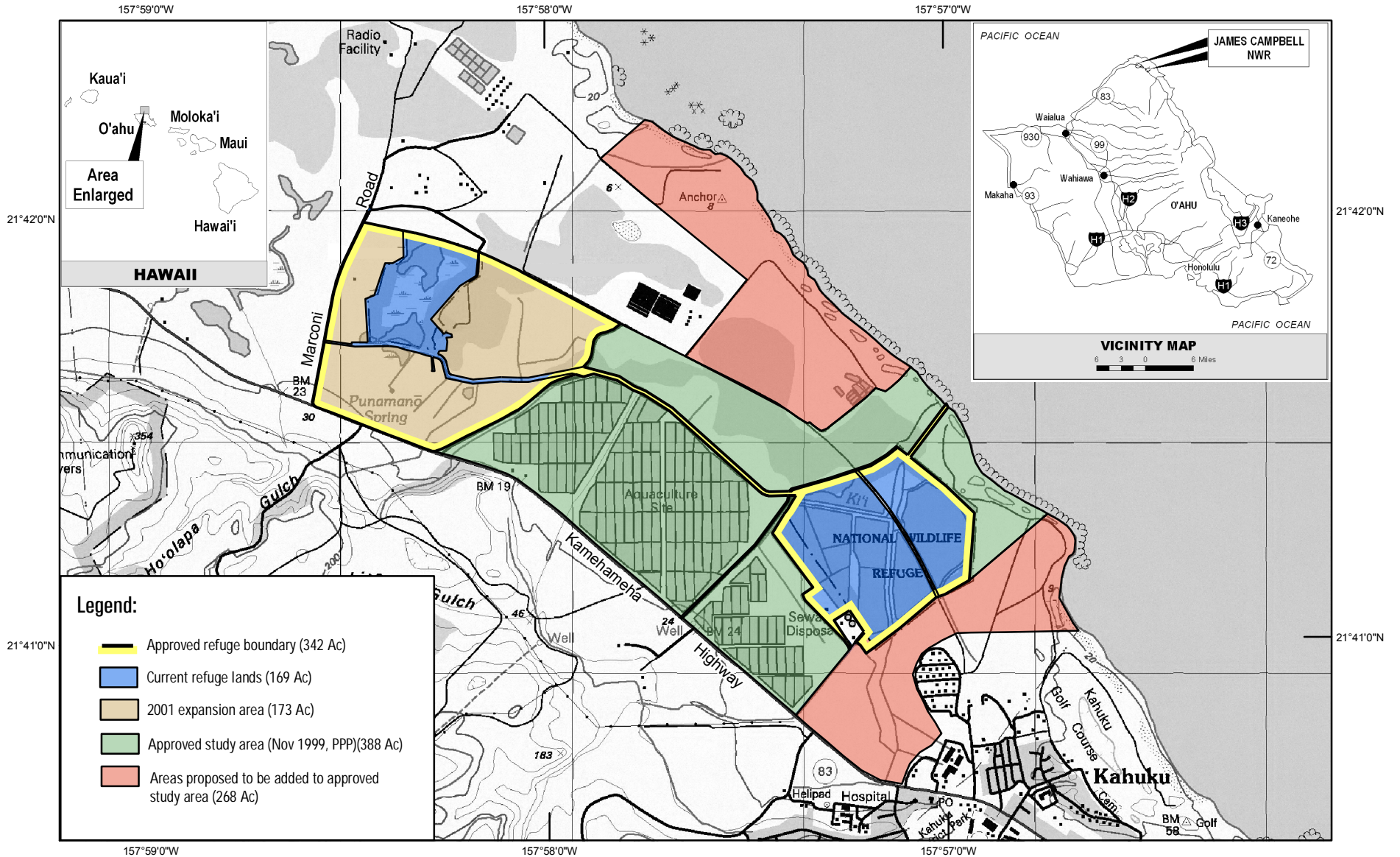


U.S. Fish & Wildlife Service

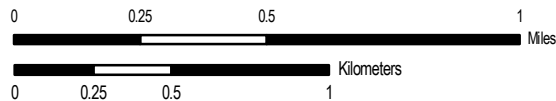
James Campbell National Wildlife Refuge

Honolulu County, Hawai'i

Preliminary Project Proposal



PRODUCED IN THE DIVISION OF REFUGE PLANNING
 PORTLAND, OREGON
 LAND STATUS CURRENT TO: 5/31/02
 MAP DATE: 12/27/04
 BASEMAP: DRG 24K
 FILE: 05-044.MXD



UTM ZONE 4
 NAD 83