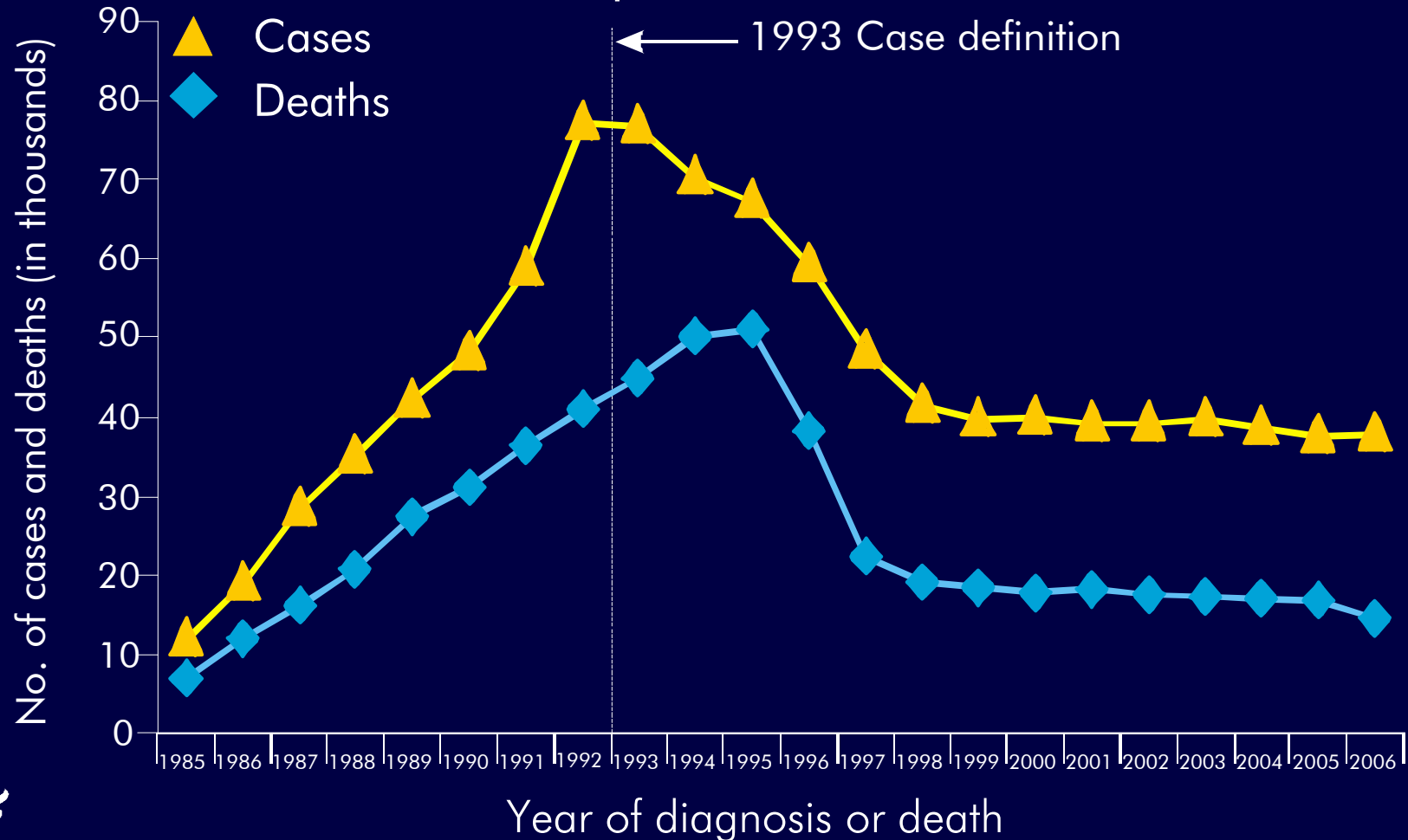


Estimated Number of AIDS Cases and Deaths among Adults and Adolescents with AIDS, 1985–2006—United States and Dependent Areas



Note. Data have been adjusted for reporting delays.

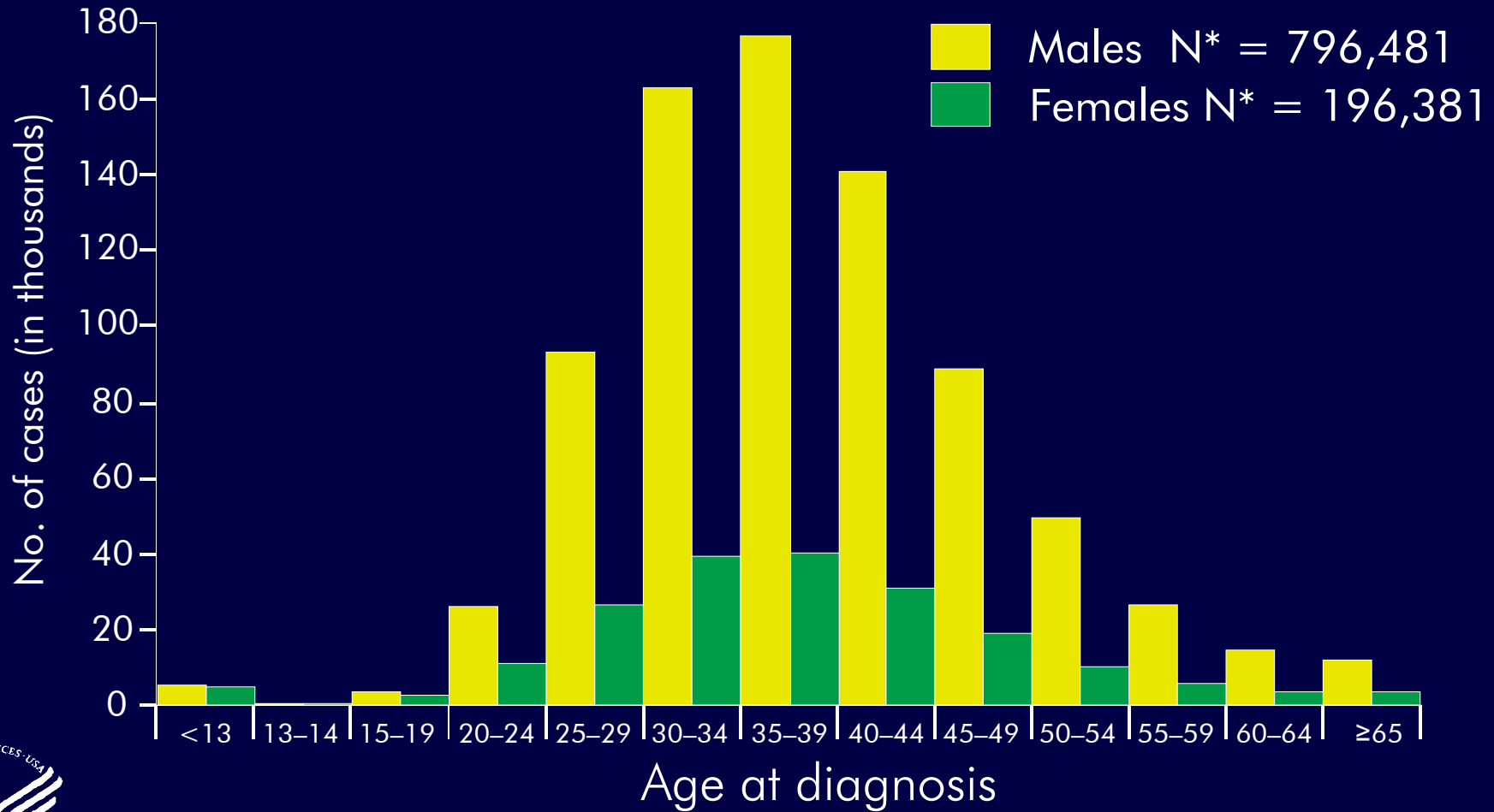


Reported AIDS Cases and Deaths, Cumulative through 2006—United States and Dependent Areas

	Cases	Deaths	
		No.	%
Adults and adolescents	983,343	544,015	55
Children (<13 years)	9,522	5,579	59
Total	992,865	549,594	55



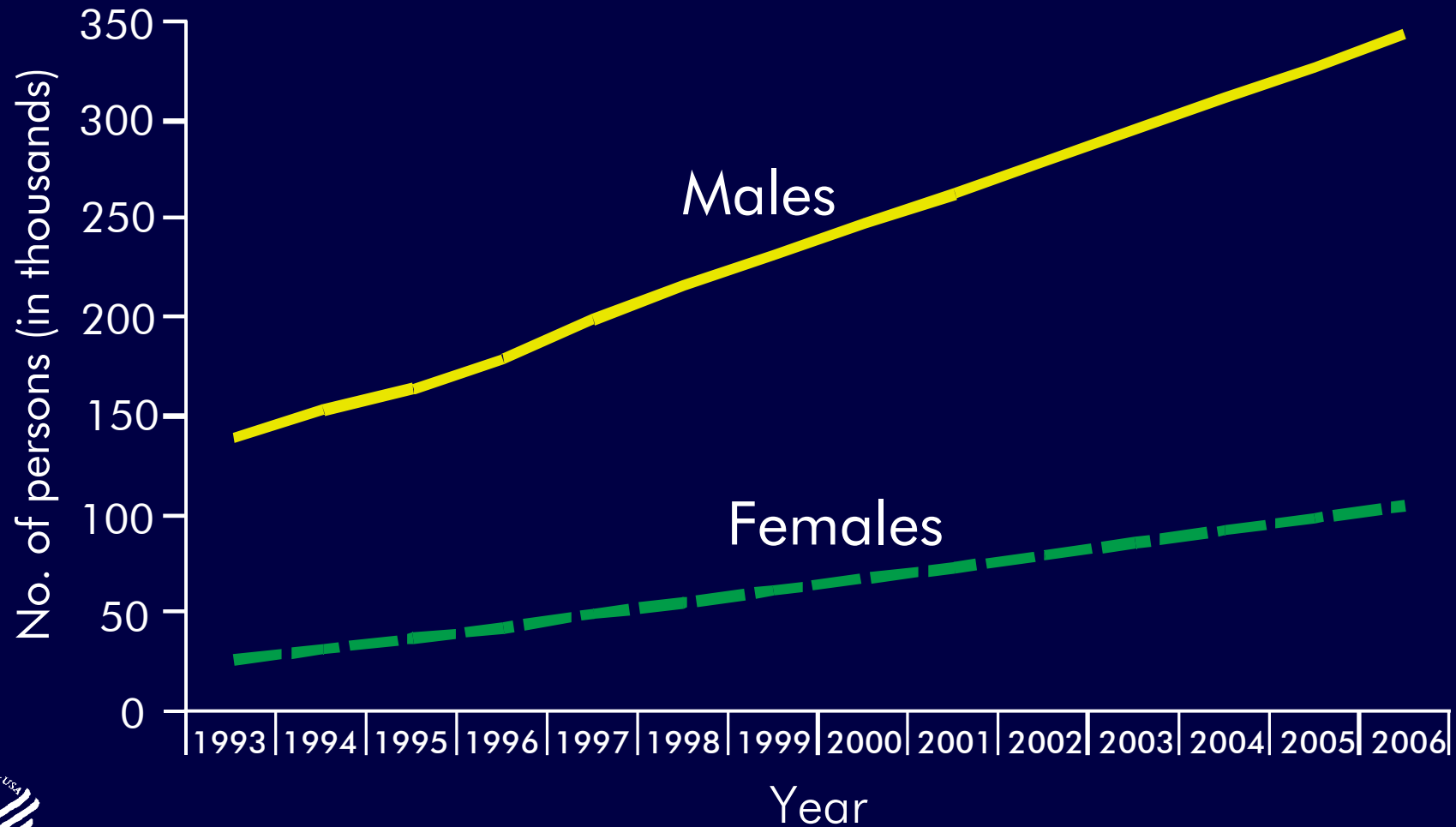
Reported AIDS Cases, by Age and Sex, Cumulative through 2006—United States and Dependent Areas



* Excludes 3 persons of unknown sex.



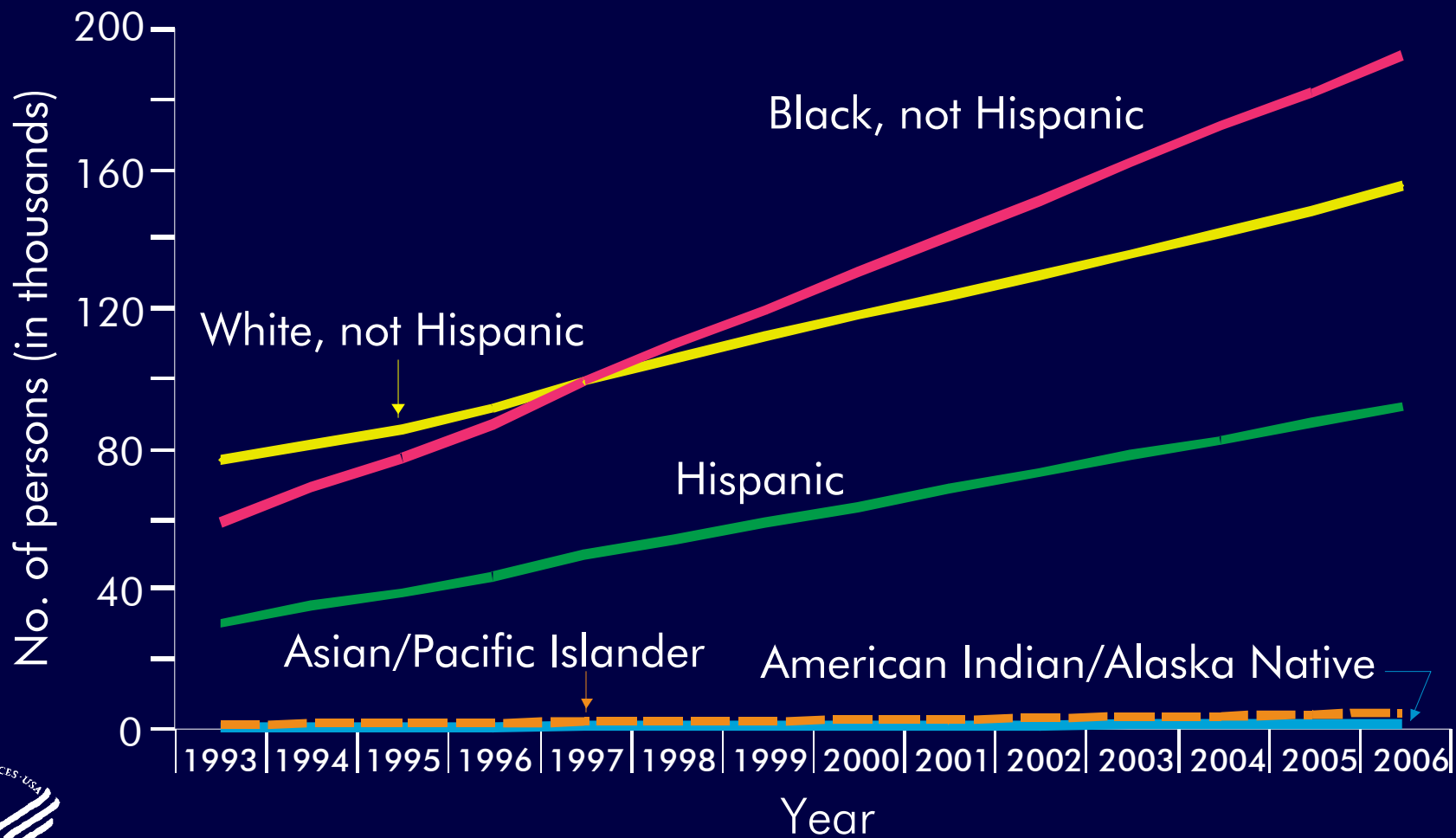
Estimated Number of Adults and Adolescents Living with AIDS by Sex, 1993–2006—United States and Dependent Areas



Note. Data have been adjusted for reporting delays.



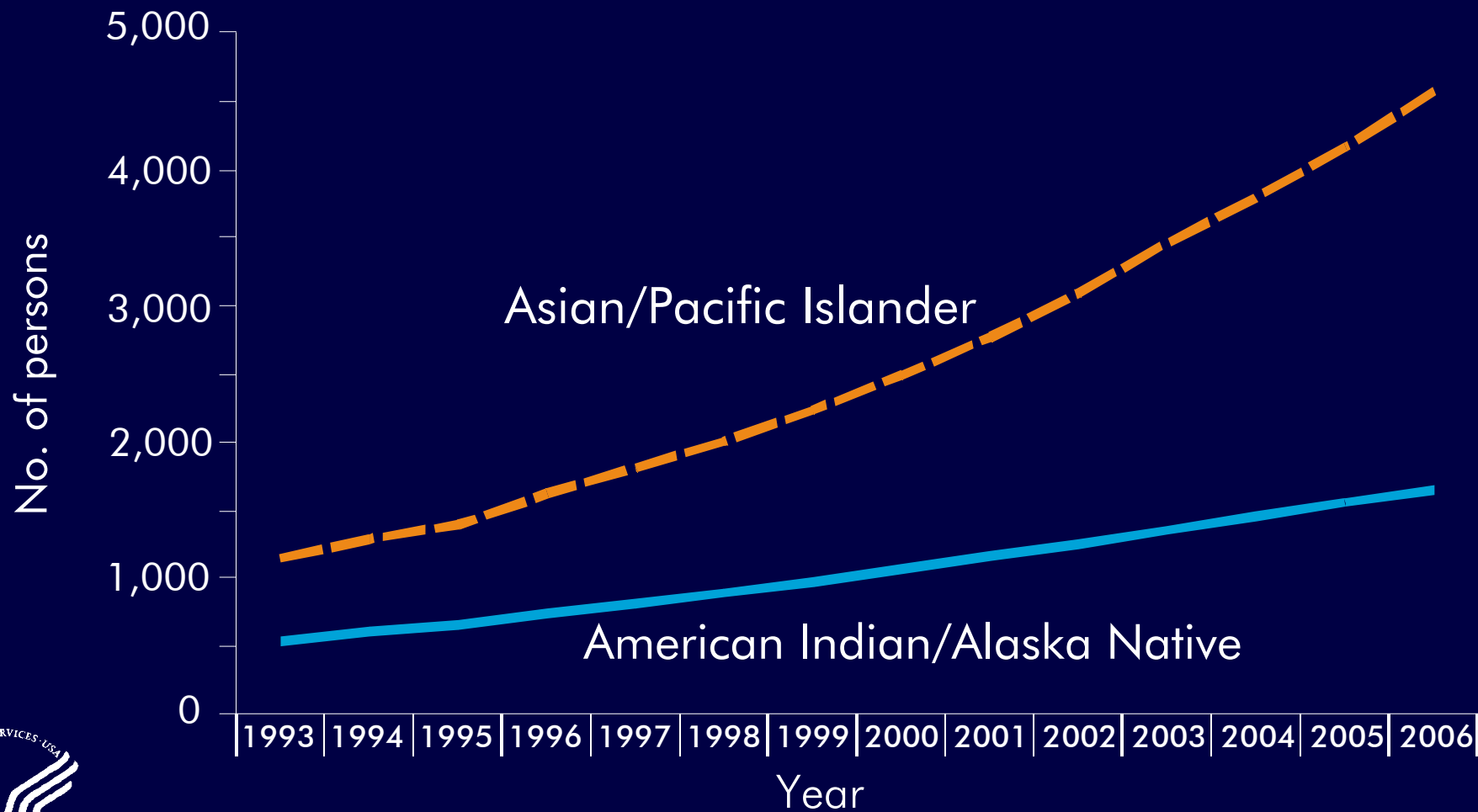
Estimated Number of Persons Living with AIDS, by Race/Ethnicity 1993–2006—United States and Dependent Areas



Note. Data have been adjusted for reporting delays.



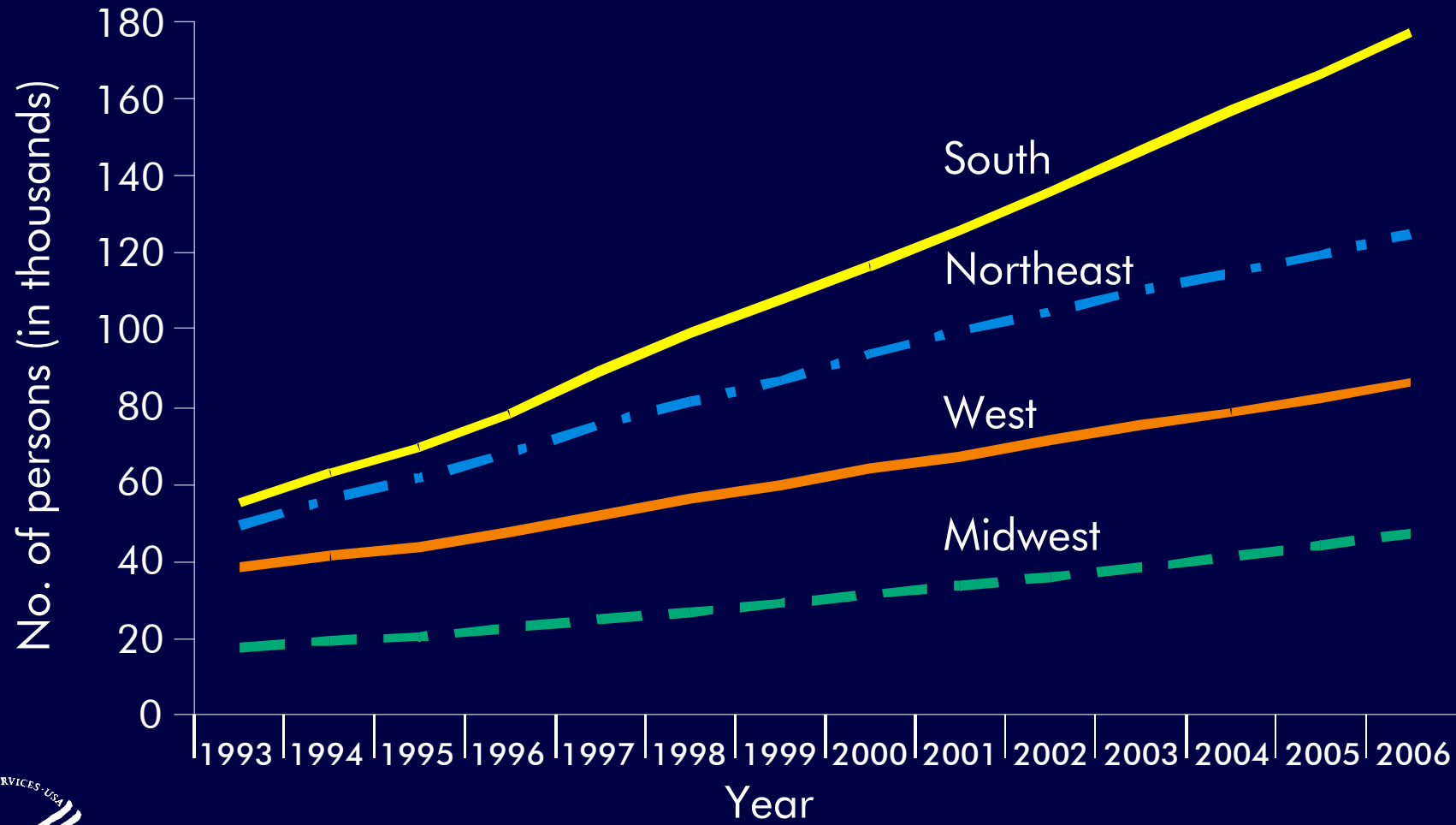
Estimated Number of Asians/Pacific Islanders and of American Indians/Alaska Natives Living with AIDS 1993–2006—United States and Dependent Areas



Note. Data have been adjusted for reporting delays.



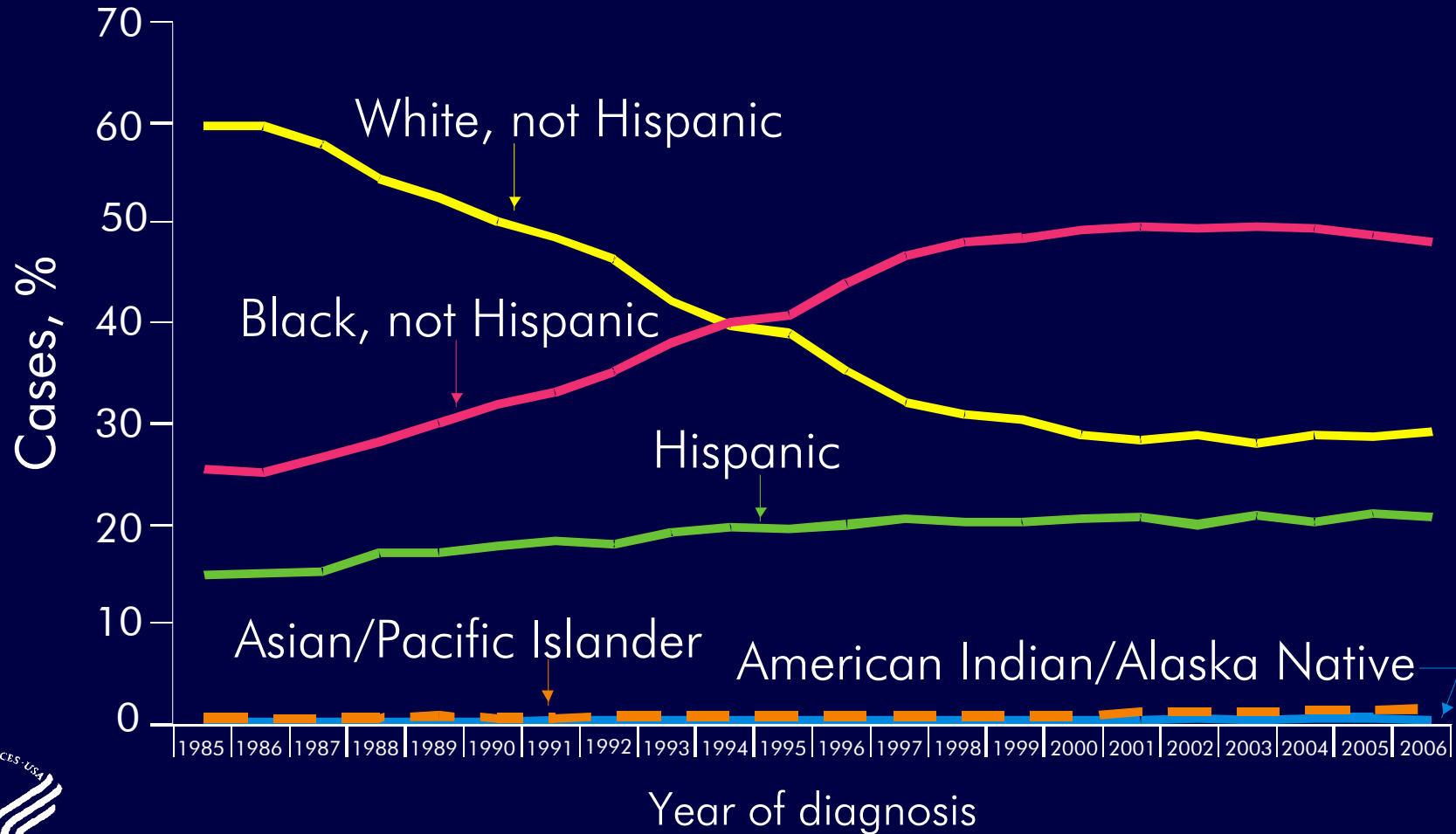
Estimated Number of Adults and Adolescents Living with AIDS by Region, 1993–2006—50 States and DC



Note. Data have been adjusted for reporting delays.



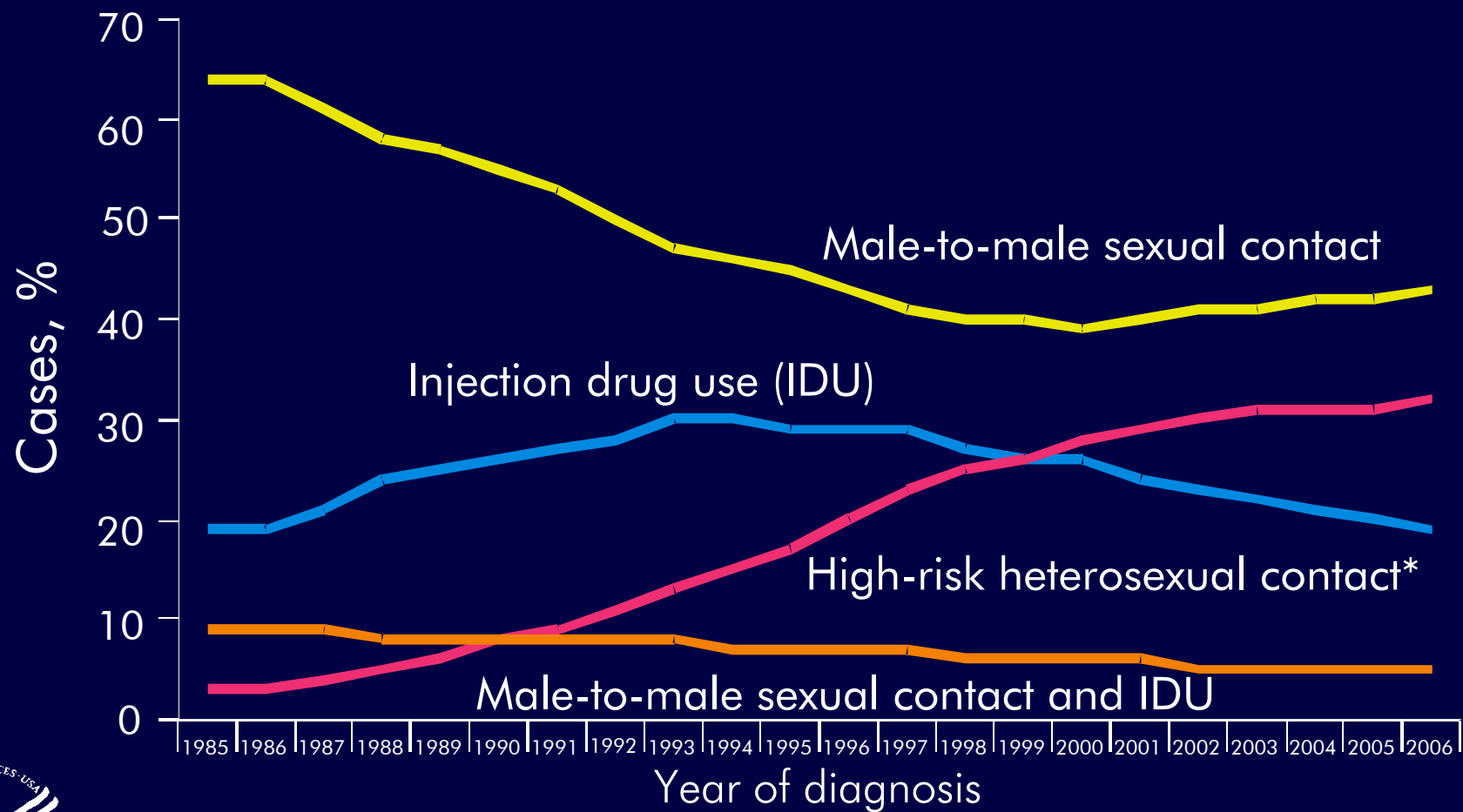
Proportion of AIDS Cases among Adults and Adolescents by Race/Ethnicity and Year of Diagnosis 1985–2006—United States and Dependent Areas



Note. Data have been adjusted for reporting delays.



Proportion of AIDS Cases among Adults and Adolescents by Transmission Category and Year of Diagnosis 1985–2006—United States and Dependent Areas

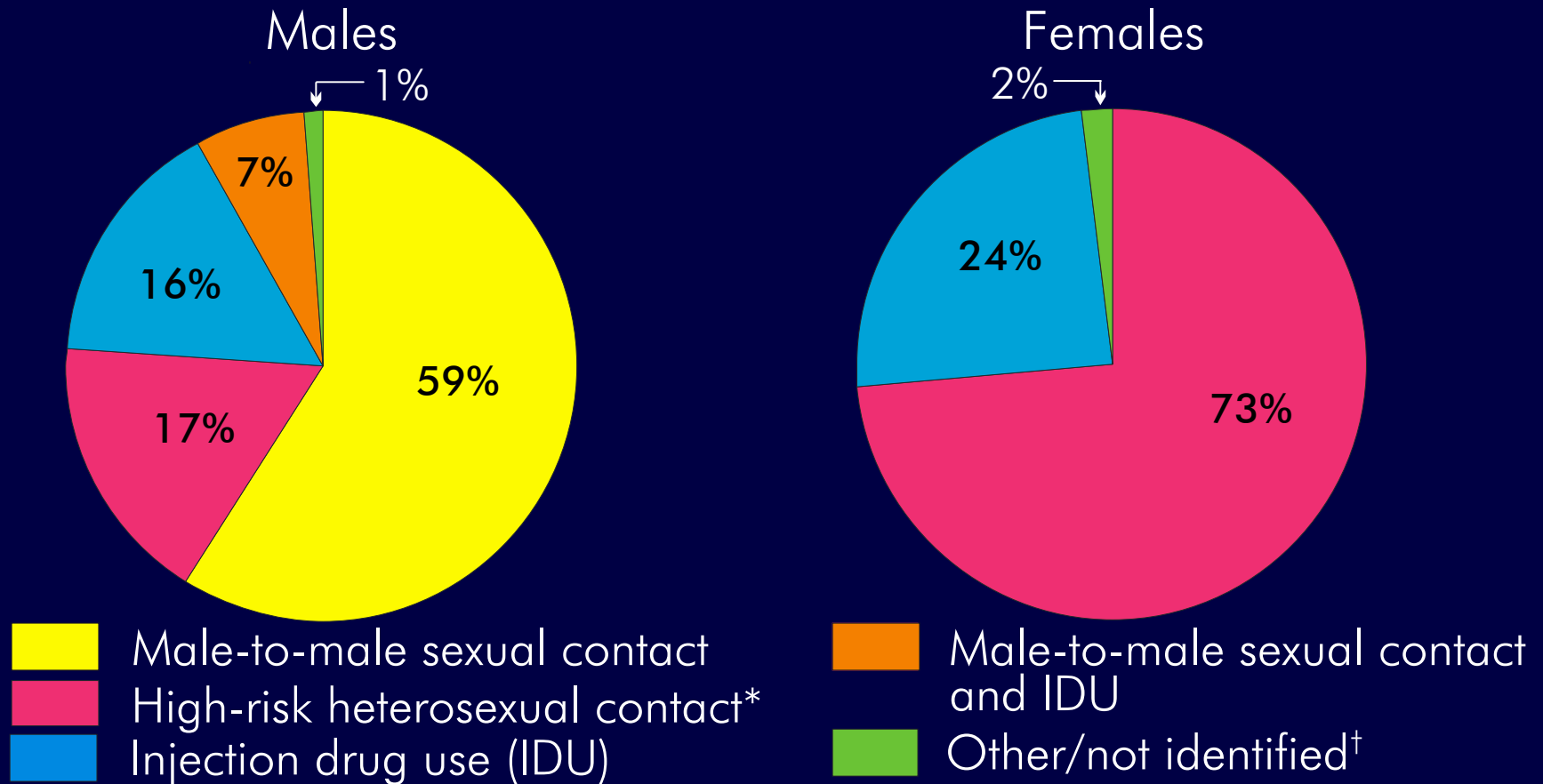


Note. Data have been adjusted for reporting delays and cases without risk factor information were proportionally redistributed.

* Heterosexual contact with a person known to have, or to be at high risk for, HIV infection.



Proportion of AIDS Cases among Adults and Adolescents by Sex and Transmission Category, Diagnosed in 2006—50 States and DC



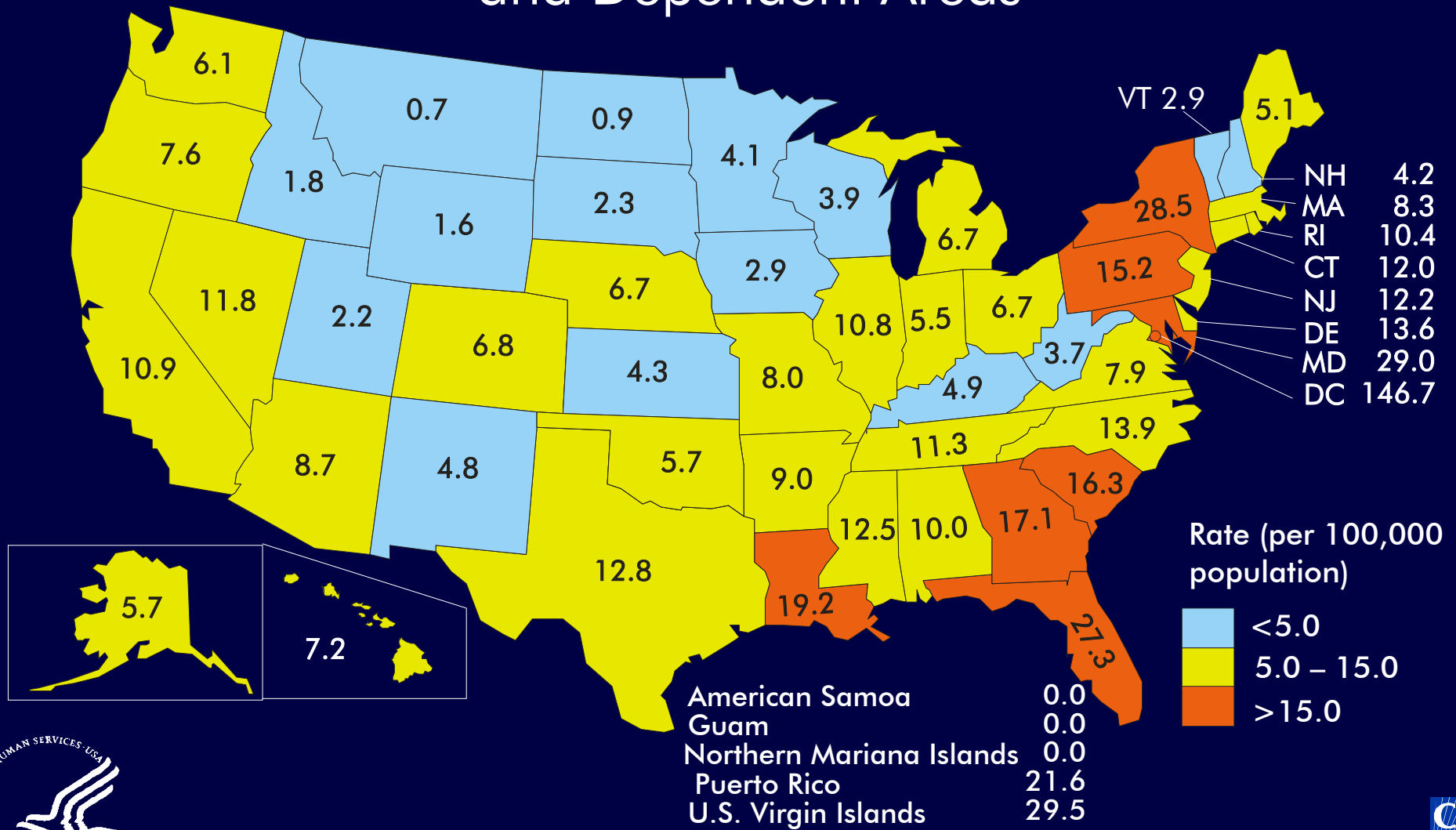
Note. Data have been adjusted for reporting delays and cases without risk factor information were proportionally redistributed.

*Heterosexual contact with a person known to have, or to be at high risk for, HIV infection.

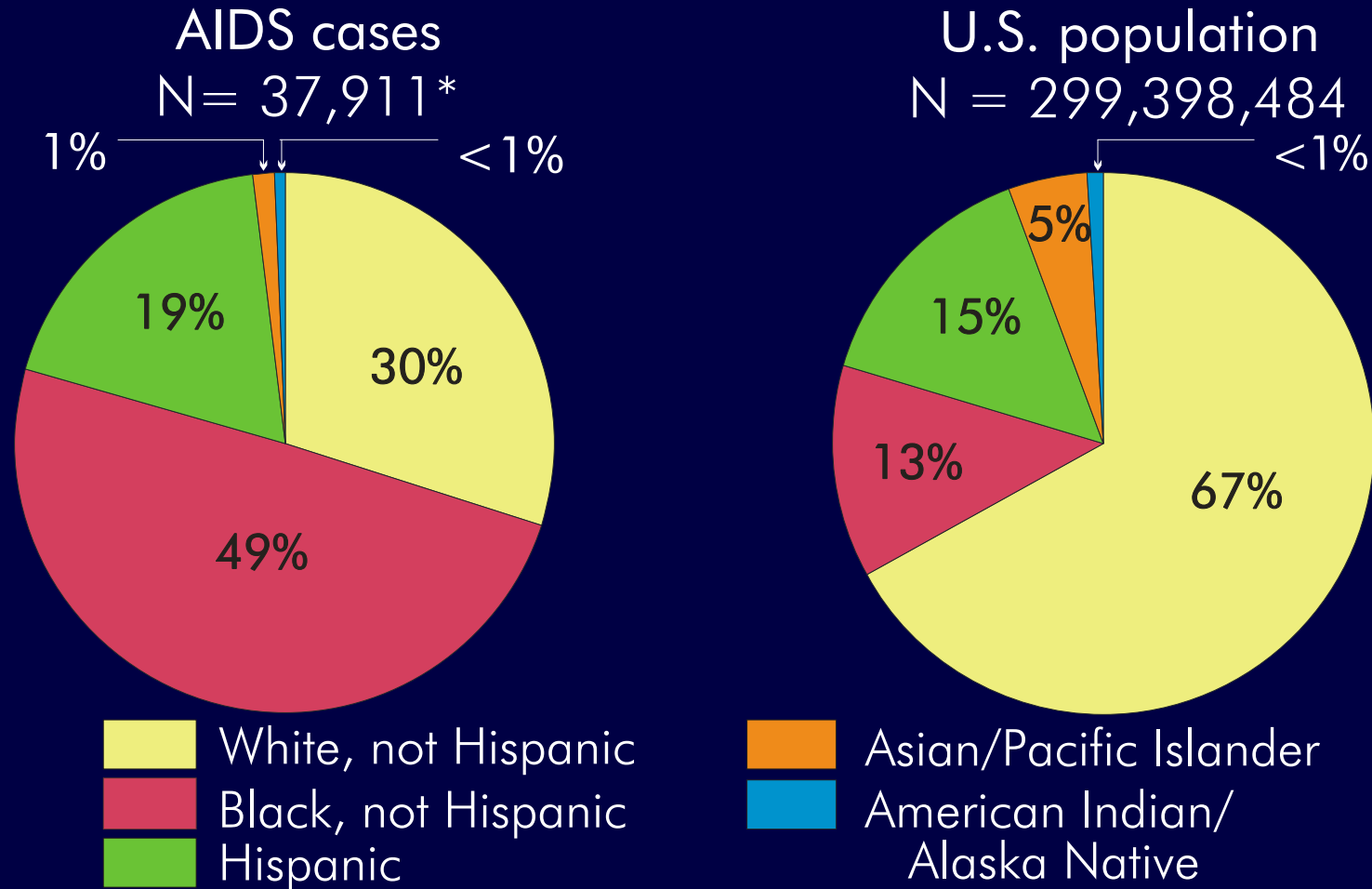
† Includes hemophilia, blood transfusion, perinatal exposure, and risk factor not reported or not identified.



AIDS Rates, Reported in 2006—United States and Dependent Areas



Proportion of AIDS Cases and Population by Race/Ethnicity, Reported in 2006—50 States and DC



* Includes 357 persons of unknown race or multiple races.



Estimated Number of AIDS Cases and Rates for Male Adults and Adolescents, by Race/Ethnicity 2006—50 States and DC

<u>Race/Ethnicity</u>	<u>Cases</u>	<u>Rate (cases per 100,000 population)</u>
White, not Hispanic	9,267	11.2
Black, not Hispanic	11,540	82.9
Hispanic	5,388	31.3
Asian/Pacific Islander	423	7.5
American Indian/ Alaska Native	118	12.2
Total*	26,989	22.4



Note. Data have been adjusted for reporting delays.

* Includes 254 male adults and adolescents of unknown race or multiple races.



Estimated Number of AIDS Cases and Rates for Female Adults and Adolescents, by Race/Ethnicity 2006—50 States and DC

<u>Race/Ethnicity</u>	<u>Cases</u>	<u>Rate (cases per 100,000 population)</u>
White, not Hispanic	1,659	1.9
Black, not Hispanic	6,391	40.4
Hispanic	1,516	9.5
Asian/Pacific Islander	95	1.6
American Indian/ Alaska Native	37	3.6
<u>Total*</u>	<u>9,801</u>	<u>7.8</u>



Note. Data have been adjusted for reporting delays.

* Includes 103 female adults and adolescents of unknown race or multiple races.



Proportion of AIDS Cases among Adults and Adolescents by Region and Size of Place of Residence Diagnosed in 2006—50 States and DC

Region*	Metropolitan population		Non- metropolitan area
	>500,000 %	50,000– 500,000 %	
Northeast N = 9,481	88	7	4
Midwest N = 4,160	79	12	9
South N = 17,085	76	12	11
West N = 6,065	89	7	4

Note. Data have been adjusted for reporting delays.

* Region totals include persons whose metropolitan area of residence is unknown or missing.



Estimated Number and Proportion of AIDS Cases among Adults and Adolescents, by Transmission Category Diagnosed in 2006—50 States and DC

<u>Transmission category</u>	<u>No.</u>	<u>%</u>
Male-to-male sexual contact	16,001	43
Injection drug use (IDU)	6,795	18
Male-to-male sexual contact and IDU	1,803	5
High-risk heterosexual contact*	11,754	32
<u>Other/not identified†</u>	<u>437</u>	1
Total	36,790	



Note. Data have been adjusted for reporting delays and cases without risk factor information were proportionally redistributed.

* Heterosexual contact with a person known to have, or to be at high risk for, HIV infection.

† Includes hemophilia, blood transfusion, perinatal exposure, and risk factor not reported or not identified



Estimated Number and Proportion of AIDS Cases Associated with Injection Drug Use, by Transmission Category Diagnosed in 2006—United States and Dependent Areas

	<u>No.</u>	<u>%</u>
Heterosexual male injection drug user (IDU)	4,686	44
Female IDU	2,467	23
Male-to-male sexual contact and IDU	1,844	17
Heterosexual sex partners of IDUs	1,703	16
Children whose mothers are IDUs or sex partners of IDUs	6	<1
Total	10,706	



Note. Data have been adjusted for reporting delays and cases without risk factor information were proportionally redistributed.



Estimated Number and Proportion of AIDS Cases Associated with Injection Drug Use*, by Race/Ethnicity Diagnosed in 2006—United States and Dependent Areas

<u>Race/Ethnicity</u>	<u>Cases</u>	<u>%</u>
White, not Hispanic	2,665	25
Black, not Hispanic	5,366	50
Hispanic	2,385	22
Asian/Pacific Islander	105	1
American Indian/Alaska Native	61	1
<u>Total[†]</u>	<u>10,706</u>	

Note. Data have been adjusted for reporting delays and cases without risk factor information were proportionally redistributed.

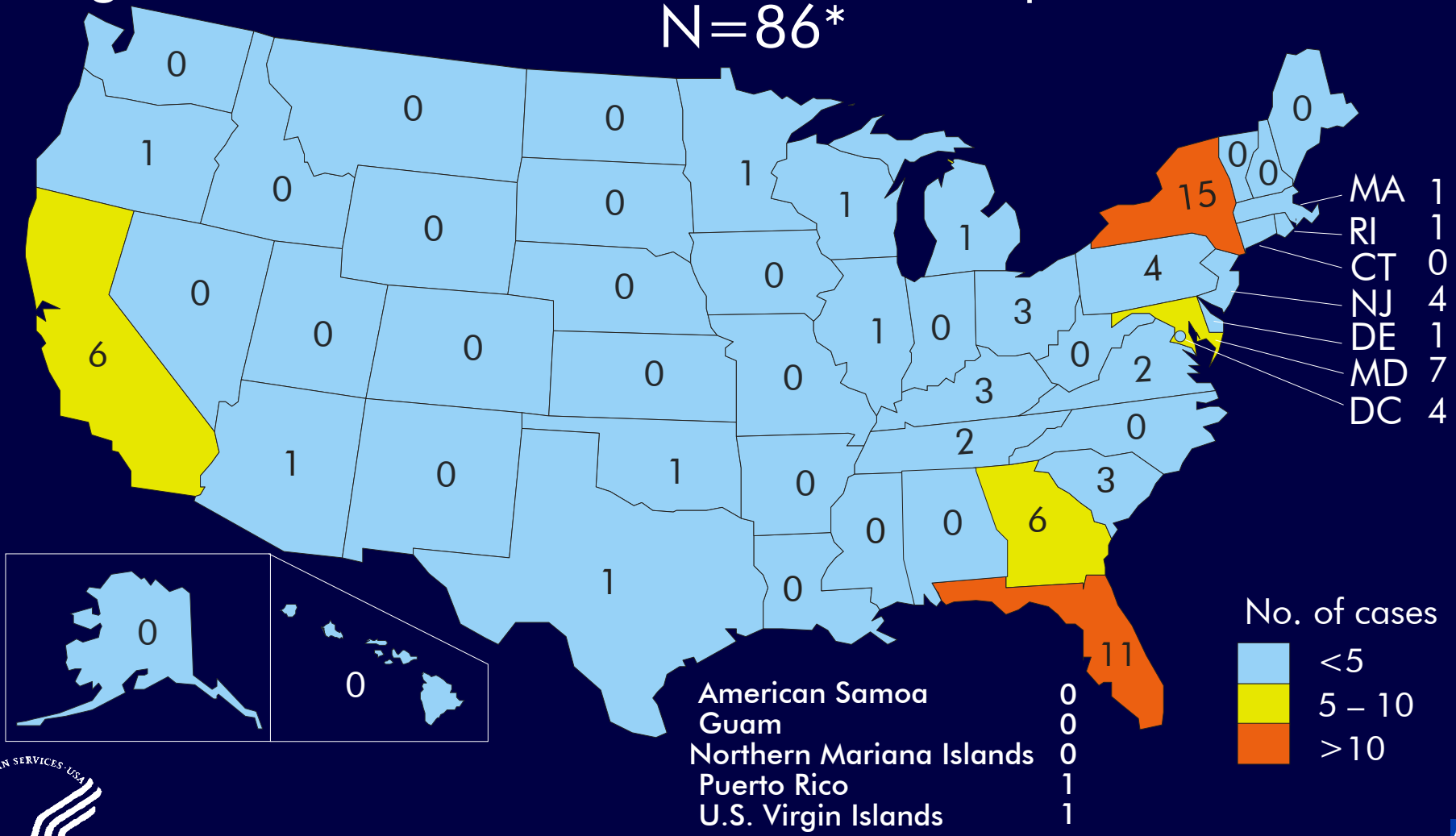
* Includes injection drug users (IDUs), men who have sex with men and inject drugs, heterosexual sex partners of IDUs and children whose mothers are IDUs or sex partners of IDUs.

† Total includes 124 persons of unknown race or multiple races.



Reported AIDS Cases in Children <13 Years of Age at Diagnosis, 2006—United States and Dependent Areas

N=86*



* Includes 3 children whose area of residence is unknown.



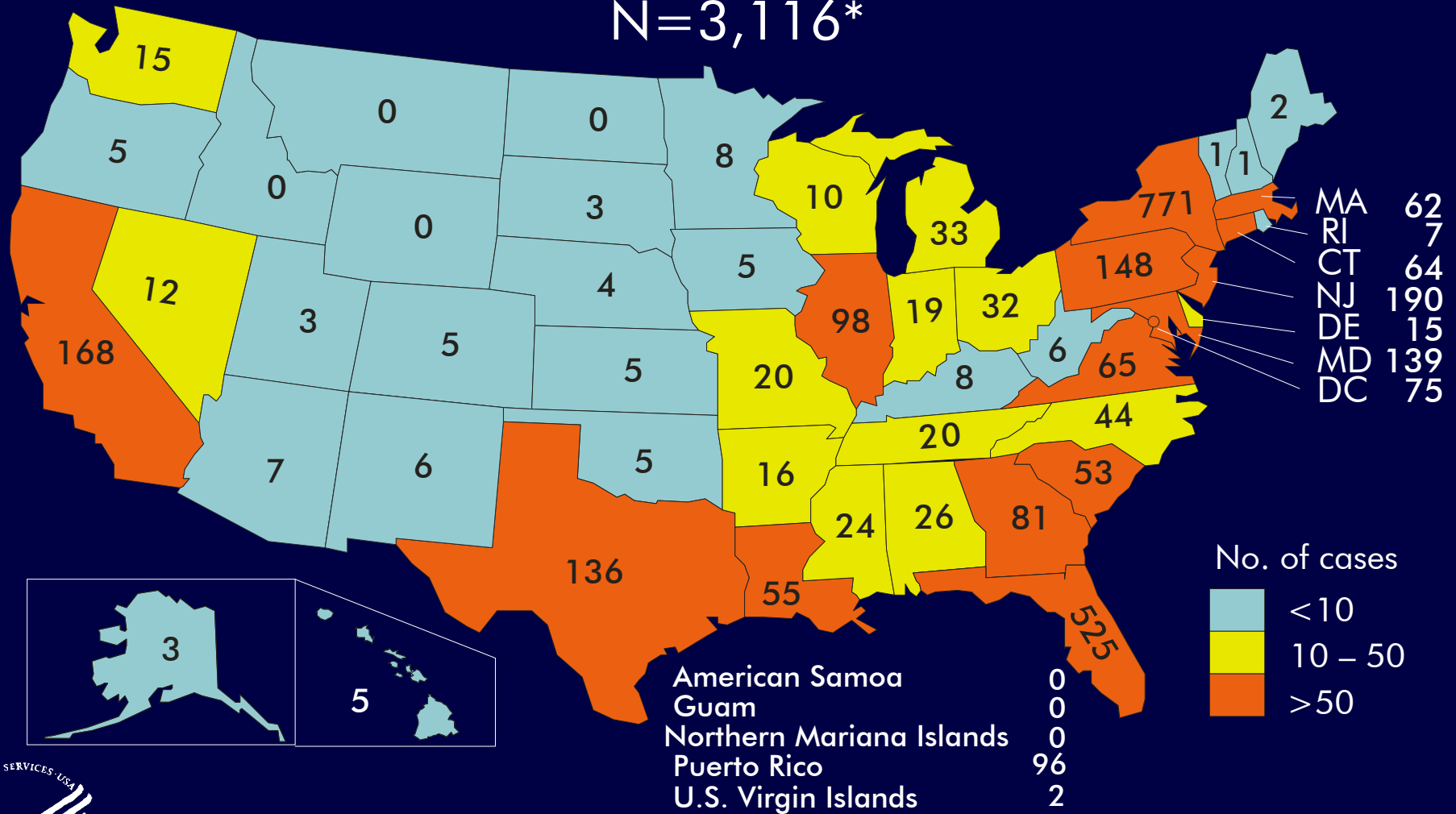
Reported AIDS Cases, by Age Group at Diagnosis Cumulative through 2006—United States and Dependent Areas

Age (years)	AIDS	
	No.	%
<13	9,534	<1
13–14	1,087	<1
15–24	42,180	4
25–34	320,502	32
35–44	387,902	39
45–54	166,814	17
55–64	49,491	5
≥ 65	15,355	2
Total	992,865	



Adolescents 13-19 Years of Age Reported to be Living with AIDS during 2006—United States and Dependent Areas

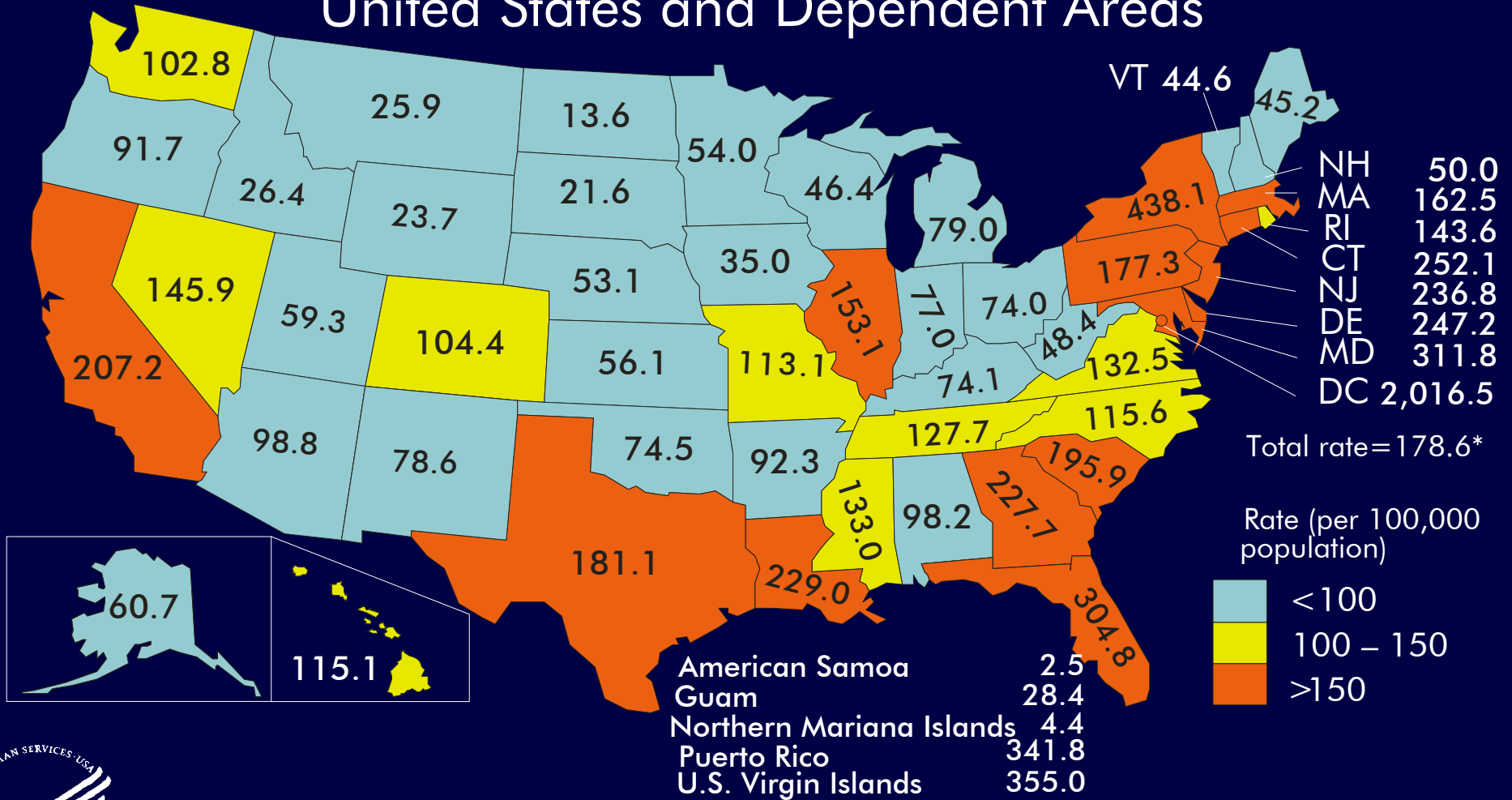
N=3,116*



Note. Data based on person's age as of December 31, 2006.
 * Includes 13 persons whose state of residence is unknown or missing.



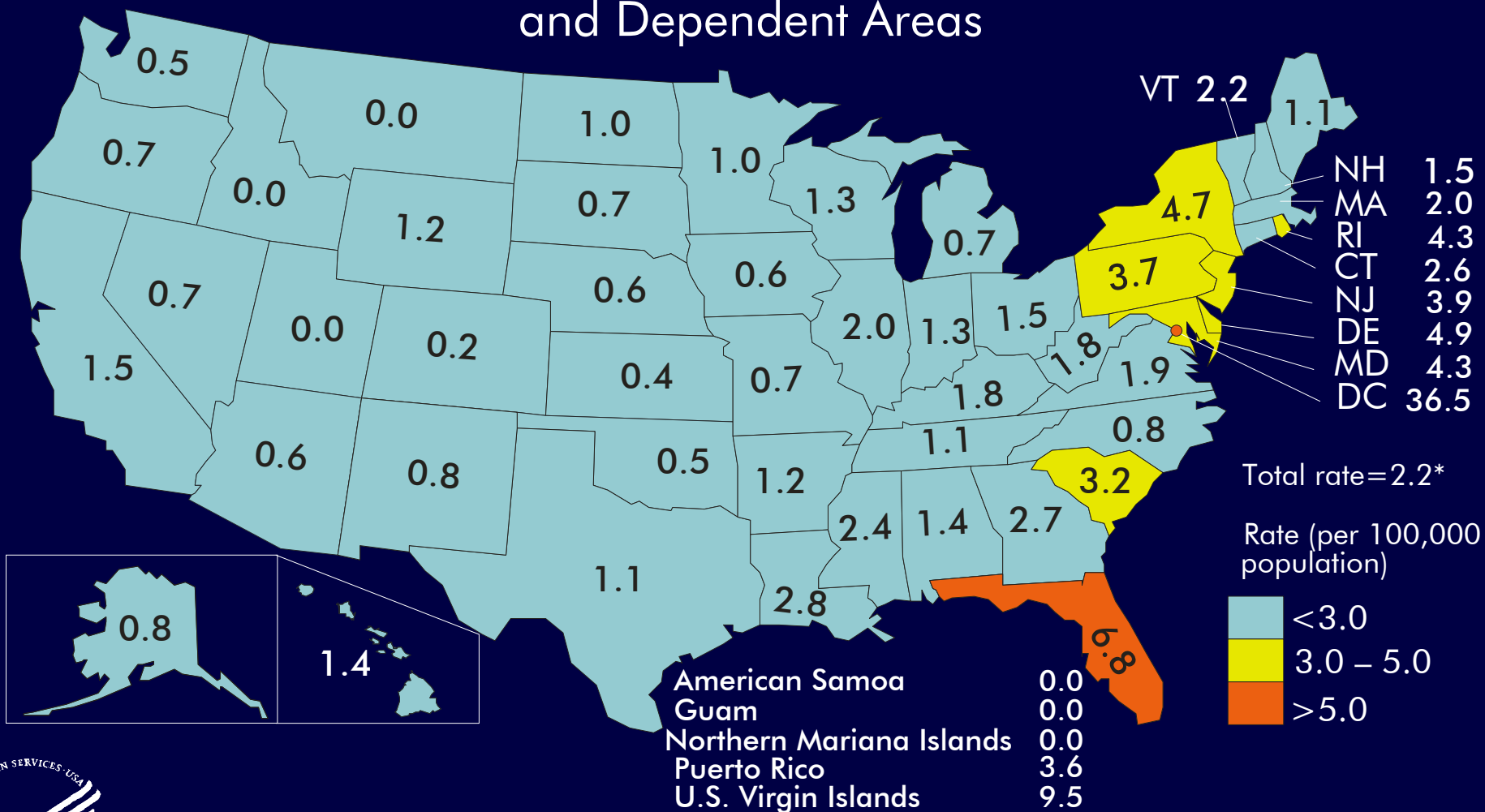
Estimated Prevalence Rates for Adults and Adolescents Living with AIDS (per 100,000 population), 2006 United States and Dependent Areas



Note. Data have been adjusted for reporting delays.
* Includes persons whose area of residence is unknown or missing.



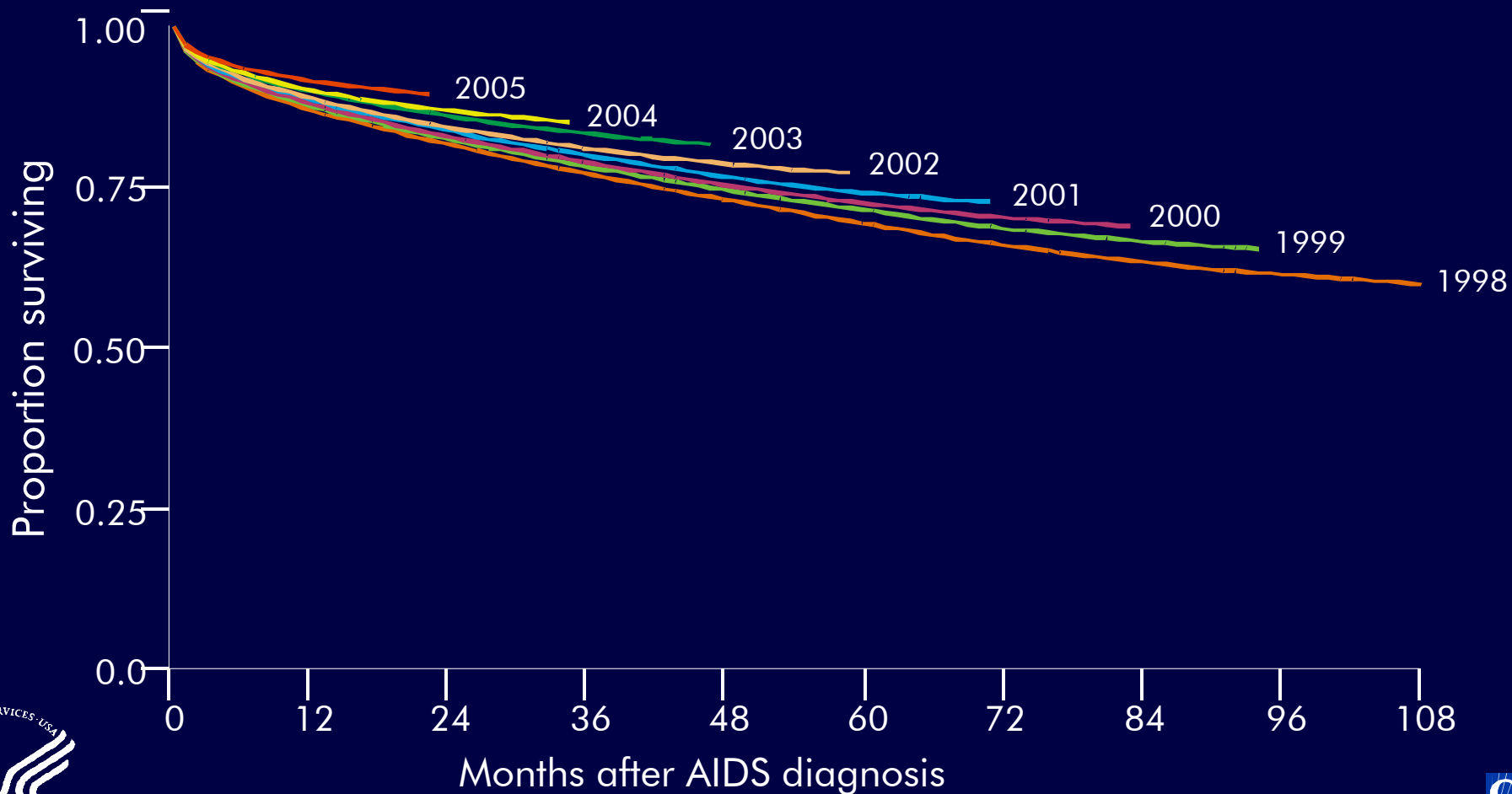
Estimated Prevalence Rates for Children <13 Years of Age Living with AIDS (per 100,000 population), 2006—United States and Dependent Areas



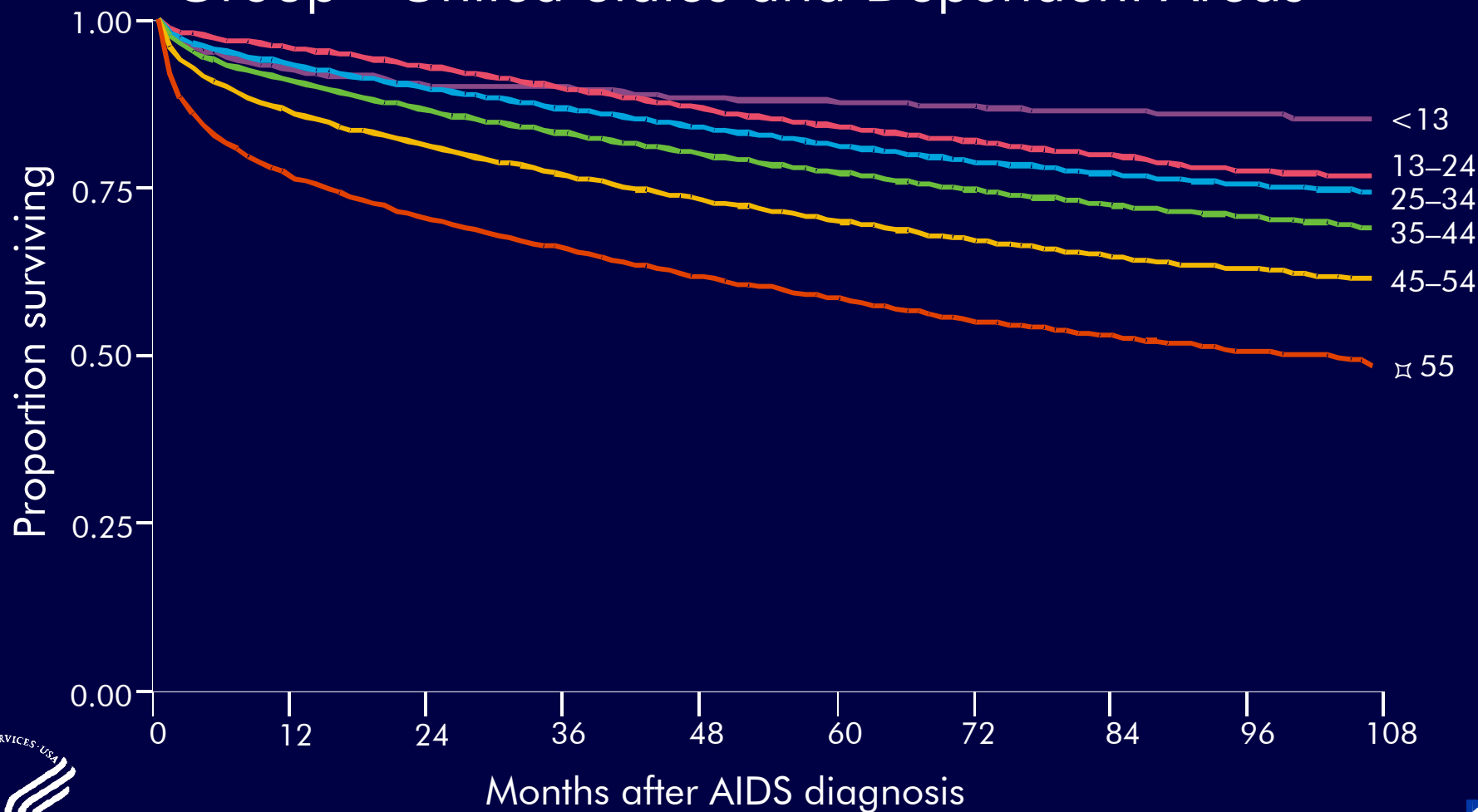
Note. Data have been adjusted for reporting delays.
 * Includes persons whose area of residence is unknown.



Proportion of Persons Surviving, by Months after AIDS Diagnosis during 1998–2005 and by Year of Diagnosis—United States and Dependent Areas



Proportion of Persons Surviving, by Months after AIDS Diagnosis during 1998–2005 and by Age Group—United States and Dependent Areas



Proportion of Persons Surviving, by Months after AIDS Diagnosis during 1998–2005 and by Race/Ethnicity—United States and Dependent Areas

