

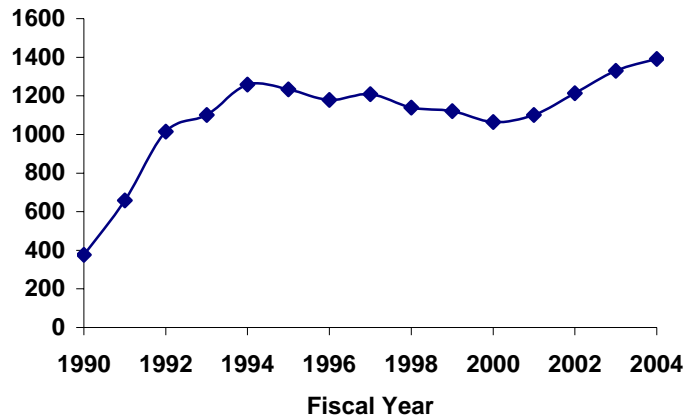
NIH
Research Supplements
for
Underrepresented Minorities
and
Individuals with Disabilities

Fiscal Year 2004

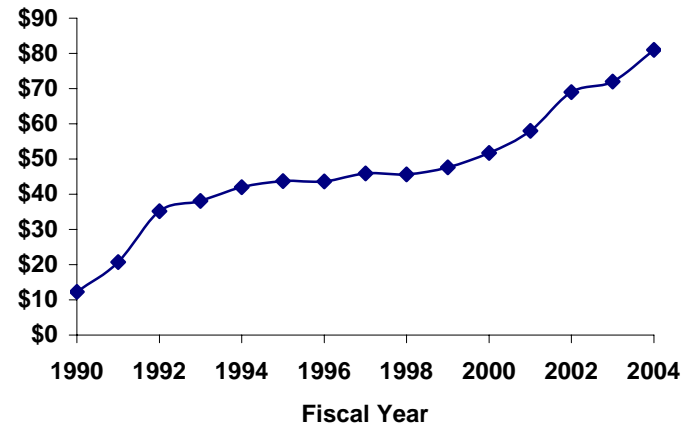
NIH-WIDE TRENDS IN MINORITY SUPPLEMENTS

FISCAL YEARS 1990-2004

Number of Awards



Expenditure (Millions)



**MINORITY SUPPLEMENTS AWARDED
BY INSTITUTE OR CENTER**

FISCAL YEAR 2004

	<u>New Awards</u>		<u>Continuing Awards</u>		<u>Total Awards</u>	
	<u>Number</u>	<u>Amount</u>	<u>Number</u>	<u>Amount</u>	<u>Number</u>	<u>Amount</u>
FIC	0	\$0	0	\$0	0	\$0
NCCAM	1	\$100,225	2	\$154,462	3	\$254,687
NCI	114	\$5,866,732	91	\$5,149,166	205	\$11,015,898
NCMHD	0	\$0	0	\$0	0	\$0
NCRR	3	\$566,932	8	\$375,641	11	\$942,573
NEI	9	\$508,066	19	\$974,829	28	\$1,482,895
NHGRI	0	\$0	10	\$626,578	10	\$626,578
NHLBI	98	\$5,772,728	81	\$5,038,515	179	\$10,811,243
NIA	22	\$2,089,881	16	\$1,366,364	38	\$3,456,245
NIAAA	10	\$514,157	11	\$722,468	21	\$1,236,625
NIAID	86	\$4,316,015	46	\$2,781,473	132	\$7,097,488
NIAMS	27	\$954,441	17	\$1,188,615	44	\$2,143,056
NIBIB	10	\$511,781	5	\$200,868	15	\$712,649
NICHD	18	\$1,000,138	48	\$4,187,394	66	\$5,187,532
NIDA	40	\$2,247,090	24	\$1,266,027	64	\$3,513,117
NIDCD	9	\$404,215	14	\$504,519	23	\$908,734
NIDCR	10	\$656,124	14	\$774,129	24	\$1,430,253
NIDDK	100	\$7,165,421	62	\$4,161,605	162	\$11,327,026
NIEHS	11	\$603,794	11	\$673,355	22	\$1,277,149
NIGMS	124	\$5,466,555	62	\$3,288,291	186	\$8,754,846
NIMH	36	\$2,177,145	33	\$2,039,716	69	\$4,216,861
NINDS	44	\$2,383,035	33	\$1,703,210	77	\$4,086,245
NINR	3	\$23,362	10	\$433,332	13	\$456,694
NLM	0	\$0	0	\$0	0	\$0
ALL ICs	775	\$43,327,837	617	\$37,610,557	1392	\$80,938,394

AWARD RATE OF NEW APPLICATIONS FOR MINORITY SUPPLEMENTS

FISCAL YEAR 2004*

	Applications	New Awards	Percent Awarded
FIC	0	0	—
NCCAM	1	1	100%
NCI	158	114	72%
NCMHD	0	0	—
NCRR	3	3	100%
NEI	9	9	100%
NHGRI	0	0	—
NHLBI	121	98	81%
NIA	64	22	34%
NIAAA	10	10	100%
NIAID	155	86	55%
NIAMS	31	27	87%
NIBIB	12	10	83%
NICHHD	46	18	39%
NIDA	47	40	85%
NIDCD	10	9	90%
NIDCR	10	10	100%
NIDDK	118	100	85%
NIEHS	13	11	85%
NIGMS	140	124	89%
NIMH	67	36	54%
NINDS	54	44	81%
NINR	7	3	43%
NLM	0	0	—
ALL ICs	1076	775	72%

*Unawarded applications may have been pending at the end of FY2004.

**MINORITY SUPPLEMENT EXPENDITURES
AS A FRACTION OF EXPENDITURES FOR ELIGIBLE RESEARCH GRANT AWARDS***

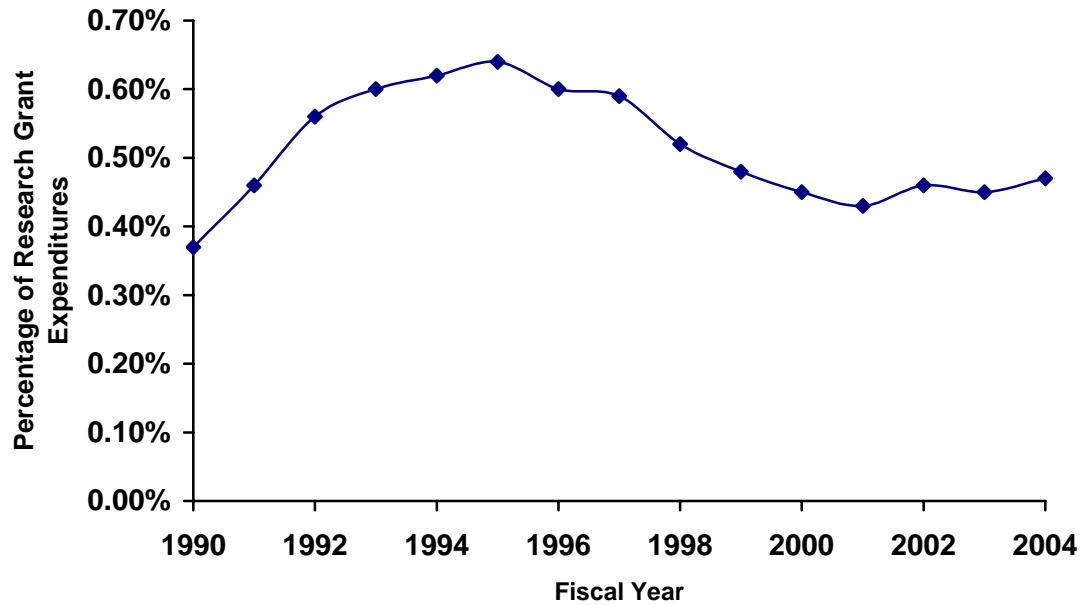
FISCAL YEAR 2004

	Supplement Awards	All Eligible Awards	Percentage
FIC	\$0	\$26,649,140	—
NCCAM	\$254,687	\$79,656,060	0.32%
NCI	\$11,015,898	\$2,768,308,829	0.40%
NCMHD	\$0	\$69,334,805	—
NCRR	\$942,573	\$526,124,220	0.18%
NEI	\$1,482,895	\$494,594,796	0.30%
NHGRI	\$626,578	\$327,302,218	0.19%
NHLBI	\$10,811,243	\$2,113,572,189	0.51%
NIA	\$3,456,245	\$754,738,185	0.46%
NIAAA	\$1,236,625	\$294,509,697	0.42%
NIAID	\$7,097,488	\$2,096,658,334	0.34%
NIAMS	\$2,143,056	\$366,404,869	0.58%
NIBIB	\$712,649	\$237,792,328	0.30%
NICHD	\$5,187,532	\$804,104,127	0.65%
NIDA	\$3,513,117	\$662,572,957	0.53%
NIDCD	\$908,734	\$279,536,755	0.33%
NIDCR	\$1,430,253	\$243,347,492	0.59%
NIDDK	\$11,327,026	\$1,314,156,278	0.86%
NIEHS	\$1,277,149	\$259,656,948	0.49%
NIGMS	\$8,754,846	\$1,453,636,543	0.60%
NIMH	\$4,216,861	\$910,912,994	0.46%
NINDS	\$4,086,245	\$1,124,697,498	0.36%
NINR	\$456,694	\$107,083,537	0.43%
NLM	\$0	\$26,915,964	—
ALL ICs	\$80,938,394	\$17,342,266,763	0.47%

*Eligible grant mechanisms: R01, R03, R15, R18,R21, R22, R24, R35, R37, P01, P20, P30, P40, P41, P50, P51, P60, U01, U19, U41, U42, U54.

NIH-WIDE TRENDS FOR MINORITY SUPPLEMENTS AS A PERCENTAGE OF EXPENDITURES FOR ELIGIBLE RESEARCH MECHANISMS

FISCAL YEARS 1990-2004



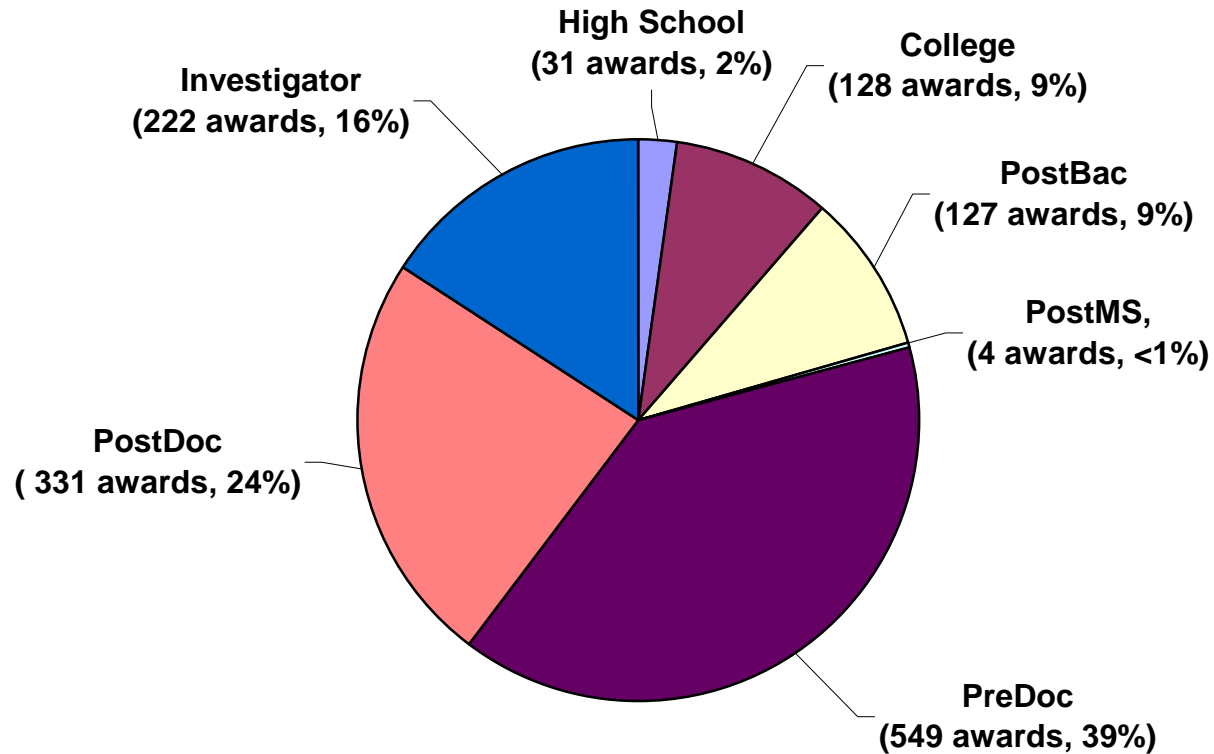
**CAREER LEVELS OF INDIVIDUALS APOINTED TO MINORITY SUPPLEMENTS
(ALL AWARDS, NEW AND COMPETING)**

FISCAL YEAR 2004

	High School	College	PostBac	PostMS	PreDoc	PostDoc	Investigator	Total
FIC	0	0	0	0	0	0	0	0
NCCAM	0	0	0	0	0	3	0	3
NCI	2	17	10	0	94	43	39	205
NCMHD	0	0	0	0	0	0	0	0
NCRR	0	1	1	0	0	7	2	11
NEI	1	2	0	0	11	10	4	28
NHGRI	0	0	1	0	5	2	2	10
NHLBI	3	15	18	0	69	39	35	179
NIA	0	2	1	1	5	17	12	38
NIAAA	0	12	0	0	0	5	4	21
NIAID	1	6	10	1	53	42	19	132
NIAMS	7	0	3	0	19	11	4	44
NIBIB	0	1	0	1	12	1	0	15
NICHD	1	3	20	0	2	19	21	66
NIDA	1	4	0	0	31	12	16	64
NIDCD	0	8	0	0	9	4	2	23
NIDCR	0	2	2	1	9	6	4	24
NIDDK	6	9	32	0	45	33	37	162
NIEHS	0	1	0	0	13	7	1	22
NIGMS	5	23	16	0	103	34	5	186
NIMH	1	5	8	0	23	22	10	69
NINDS	2	15	3	0	41	12	4	77
NINR	1	2	2	0	5	2	1	13
NLM	0	0	0	0	0	0	0	0
ALL ICs	31	128	127	4	549	331	222	1392

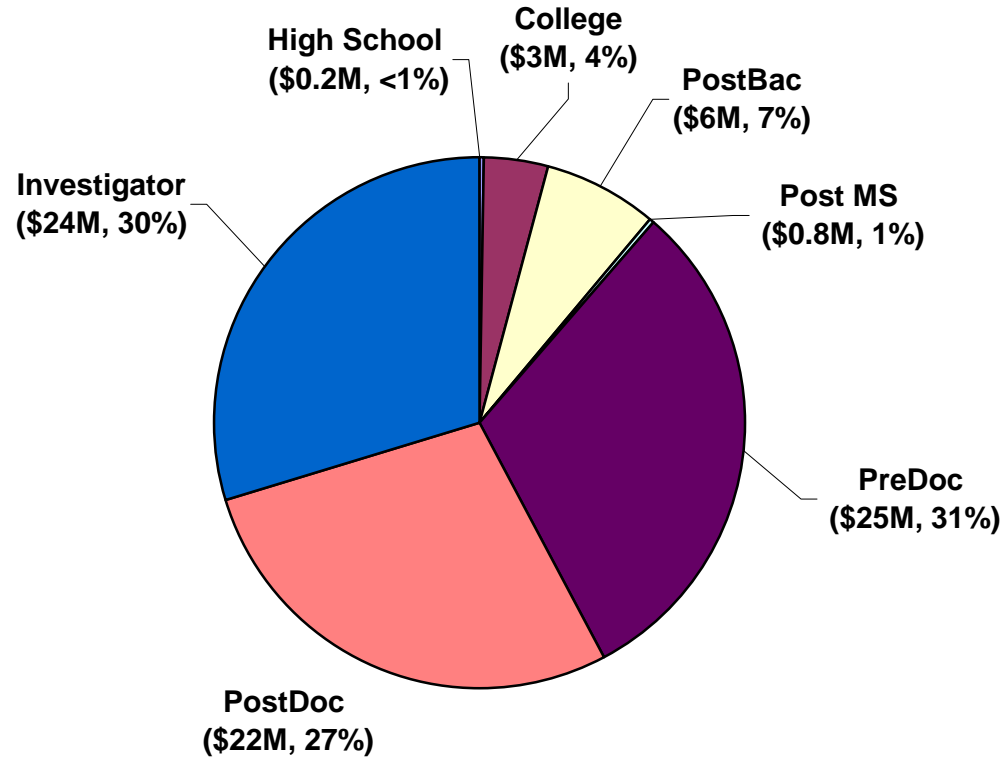
CAREER LEVELS OF INDIVIDUALS APPOINTED TO MINORITY SUPPLEMENTS

FISCAL YEAR 2004



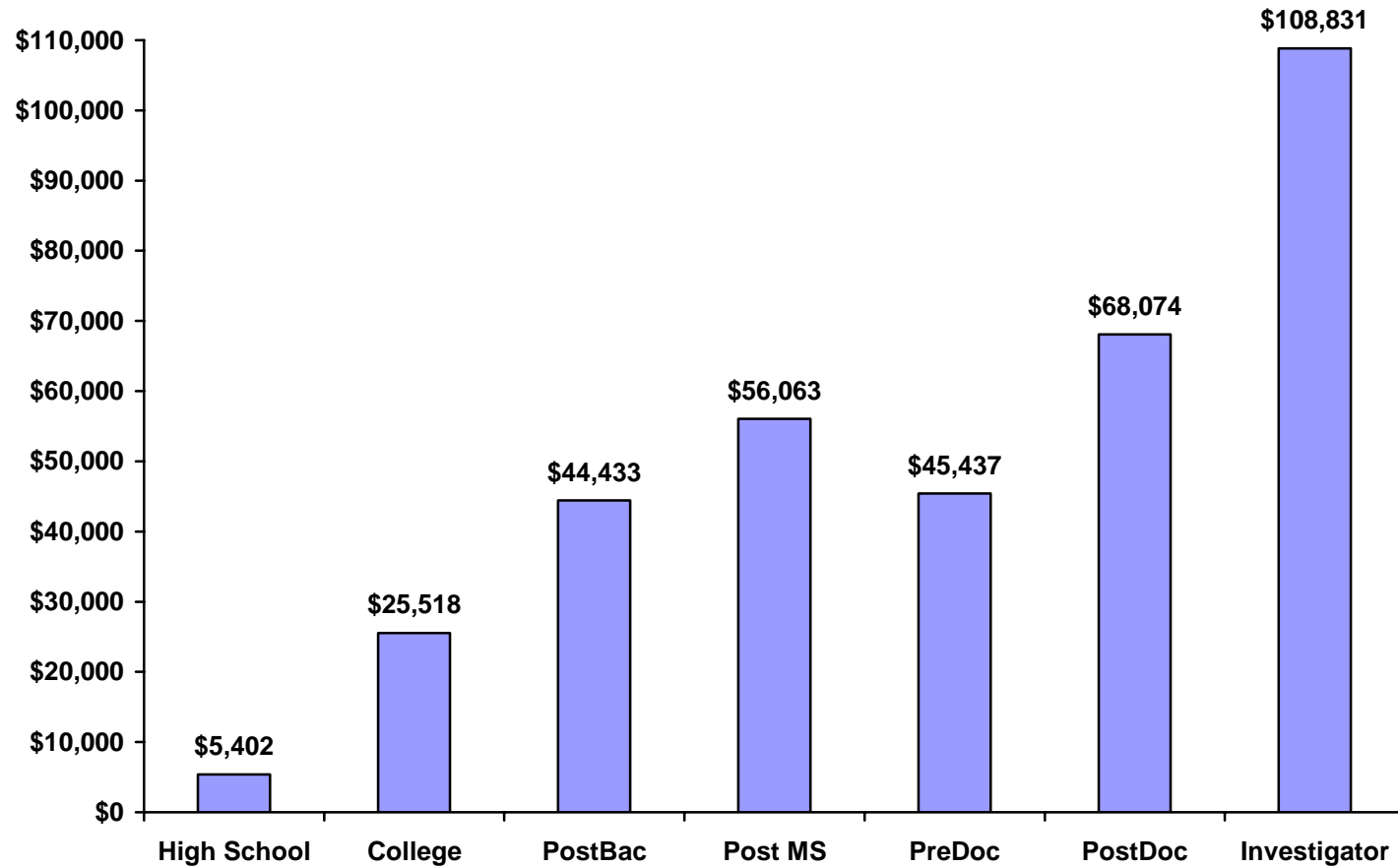
MINORITY SUPPLEMENT TOTAL EXPENDITURES FOR INDIVIDUALS AT DIFFERENT CAREER LEVELS

FISCAL YEAR 2004



AVERAGE AWARDS FOR MINORITY SUPPLEMENTS BY CAREER LEVEL

FISCAL YEAR 2004



**RACIAL/ETHNIC CLASSIFICATION OF INDIVIDUALS
APPOINTED TO MINORITY SUPPLEMENTS
(ALL AWARDS, NEW AND CONTINUING)**

FISCAL YEAR 2004

	Black	Hispanic	Native American	Pacific Islander	Other	Total
FIC	0	0	0	0	0	0
NCCAM	1	2	0	0	0	3
NCI	116	78	9	1	1	205
NCMHD	0	0	0	0	0	0
NCRR	2	7	0	0	2	11
NEI	19	9	0	0	0	28
NHGRI	7	1	0	0	2	10
NHLBI	118	52	4	2	3	179
NIA	19	14	0	1	4	38
NIAAA	11	8	0	0	2	21
NIAID	56	64	0	5	7	132
NIAMS	27	15	1	1	0	44
NIBIB	7	7	1	0	0	15
NICHHD	31	31	0	0	4	66
NIDA	34	22	2	1	5	64
NIDCD	10	9	1	1	2	23
NIDCR	12	7	1	4	0	24
NIDDK	87	60	6	4	5	162
NIEHS	11	8	0	1	2	22
NIGMS	99	77	2	8	0	186
NIMH	37	25	1	0	6	69
NINDS	30	40	3	1	3	77
NINR	9	3	0	0	1	13
NLM	0	0	0	0	0	0
ALL ICs	743	539	31	30	49	1392

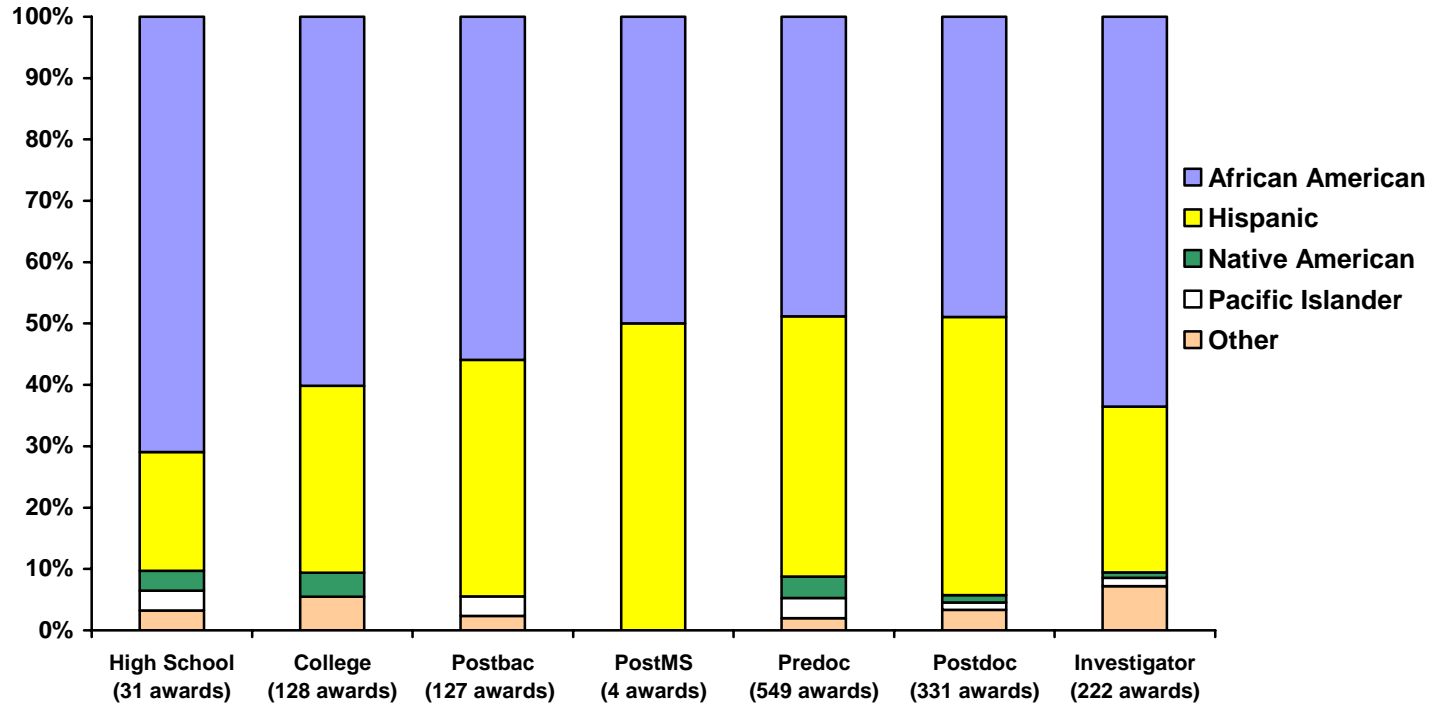
**RACE/ETHNICITY BY CAREER LEVEL OF INDIVIDUALS
APPOINTED TO MINORITY SUPPLEMENTS**

FISCAL YEAR 2004

	High School	College	Postbac	PostMS	Predoc	Postdoc	Investigator	Total
African American	22	77	71	2	268	162	141	743
Hispanic	6	39	49	2	233	150	60	539
Native American	1	5	0	0	19	4	2	31
Pacific Islander	1	0	4	0	18	4	3	30
Other	1	7	3	0	11	11	16	49
All Groups	31	128	127	4	549	331	222	1392

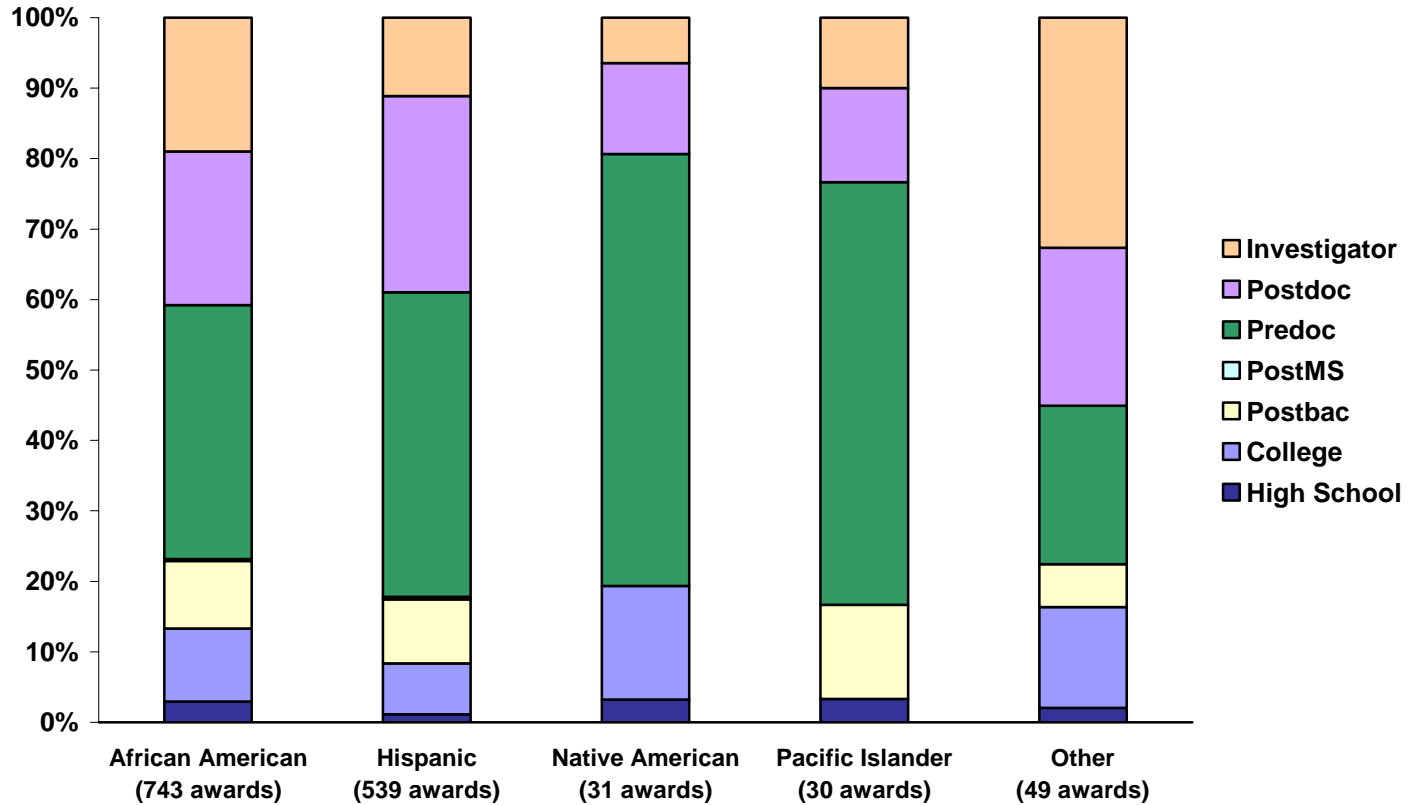
RACE/ETHNICITY BY CAREER LEVEL OF INDIVIDUALS APPOINTED TO MINORITY SUPPLEMENTS

FISCAL YEAR 2004



CAREER LEVEL BY RACE/ETHNICITY OF INDIVIDUALS APPOINTED TO MINORITY SUPPLEMENTS

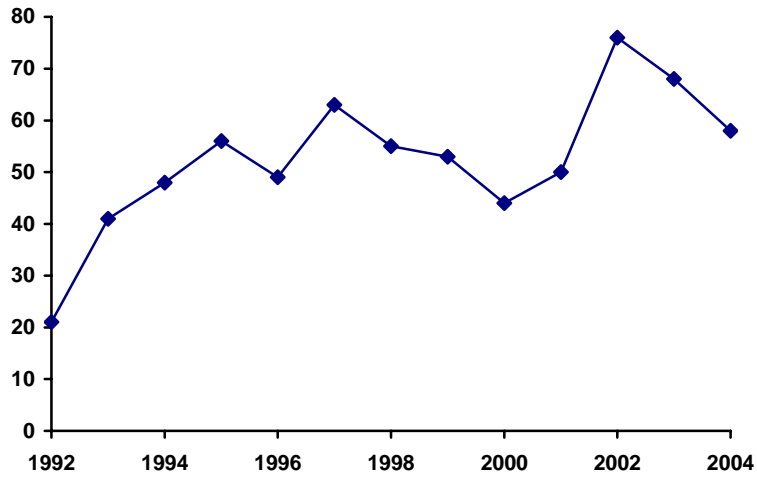
FISCAL YEAR 2004



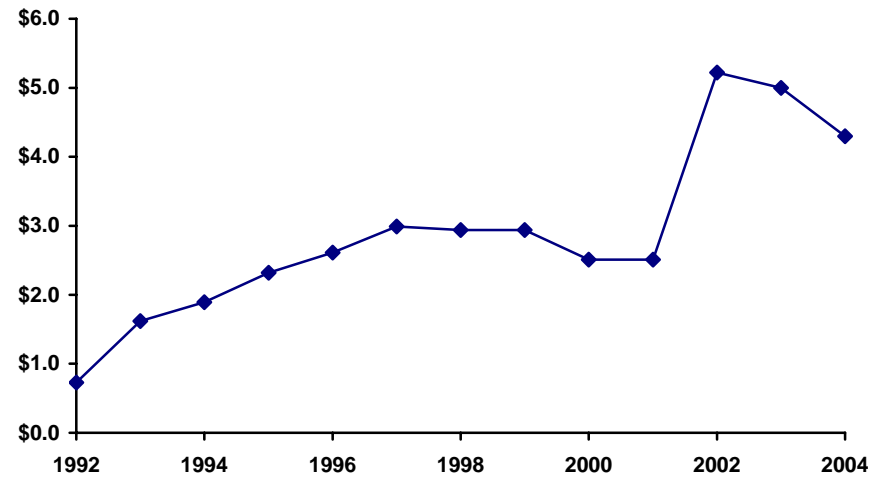
NIH-WIDE TRENDS IN DISABILITY SUPPLEMENTS

FISCAL YEARS 1992-2004

Number of awards



Expenditure (in Millions)



**DISABILITY SUPPLEMENTS AWARDED
BY INSTITUTE OR CENTER**

FISCAL YEAR 2004

	<u>New Awards</u>		<u>Continuing Awards</u>		<u>Total Awards</u>	
	Number	Amount	Number	Amount	Number	Amount
FIC	0	\$0	0	\$0	0	\$0
NCCAM	0	\$0	1	\$53,025	1	\$53,025
NCI	2	\$86,694	3	\$236,037	5	\$322,731
NCMHD	0	\$0	0	\$0	0	\$0
NCRR	0	\$0	1	\$162,371	1	\$162,371
NEI	1	\$78,493	3	\$151,385	4	\$229,878
NHGRI	0	\$0	0	\$0	0	\$0
NHLBI	2	\$76,863	2	\$130,460	4	\$207,323
NIA	2	\$58,898	1	\$48,220	3	\$107,118
NIAAA	0	\$0	0	\$0	0	\$0
NIAID	0	\$0	2	\$93,234	2	\$93,234
NIAMS	1	\$45,863	1	\$26,441	2	\$72,304
NIBIB	0	\$0	1	\$36,382	1	\$36,382
NICHD	2	\$33,871	5	\$415,734	7	\$449,605
NIDA	0	\$0	0	\$0	0	\$0
NIDCD	4	\$276,433	1	\$26,320	5	\$302,753
NIDCR	1	\$79,641	0	\$0	1	\$79,641
NIDDK	3	\$351,608	5	\$438,025	8	\$789,633
NIEHS	0	\$0	0	\$0	0	\$0
NIGMS	4	\$357,656	2	\$124,439	6	\$482,095
NIMH	4	\$459,402	2	\$130,791	6	\$590,193
NINDS	2	\$295,896	0	\$0	2	\$295,896
NINR	0	\$0	0	\$0	0	\$0
NLM	0	\$0	0	\$0	0	\$0
ALL ICs	28	\$2,201,318	30	\$2,072,864	58	\$4,274,182

FOR DISABILITY SUPPLEMENTS

FISCAL YEAR 2004*

	Applications	New Awards	Percent Awarded
FIC	0	0	—
NCCAM	0	0	—
NCI	3	2	67%
NCMHD	0	0	—
NCRR	0	0	—
NEI	1	1	100%
NHGRI	0	0	—
NHLBI	2	2	100%
NIA	4	2	50%
NIAAA	0	0	—
NIAID	4	0	—
NIAMS	1	1	100%
NIBIB	0	0	—
NICHD	3	2	67%
NIDA	1	0	—
NIDCD	4	4	100%
NIDCR	1	1	100%
NIDDK	3	3	100%
NIEHS	1	0	—
NIGMS	4	4	100%
NIMH	5	4	80%
NINDS	4	2	50%
NINR	0	0	—
NLM	0	0	—
ALL ICs	41	28	68%

*Unawarded applications may have been pending at the end of the fiscal year.

**TYPE OF DISABILITY BY CAREER LEVEL FOR
INDIVIDUALS APPOINTED TO DISABILITY SUPPLEMENTS
(ALL AWARDS, NEW AND CONTINUING)**

FISCAL YEAR 2004

	High School	College	Postbac	Post MS	Predoc	Postdoc	Investigator	Total
Speech Impairment	0	0	0	0	0	1	0	1
Hearing Impairment	0	0	0	0	4	3	4	11
Vision Impairment	0	0	1	0	4	2	2	9
Missing Extremities	0	0	0	0	0	0	0	0
Ortho Impairments	0	0	0	0	1	2	2	5
Partial Paralysis	0	0	0	0	1	6	3	10
Complete Paralysis	0	0	0	0	0	0	0	0
Other Impairments	0	2	1	0	10	7	2	22
TOTAL	0	2	2	0	20	21	13	58

CAREER LEVELS OF INDIVIDUALS APPOINTED TO DISABILITY SUPPLEMENTS

FY 2004

