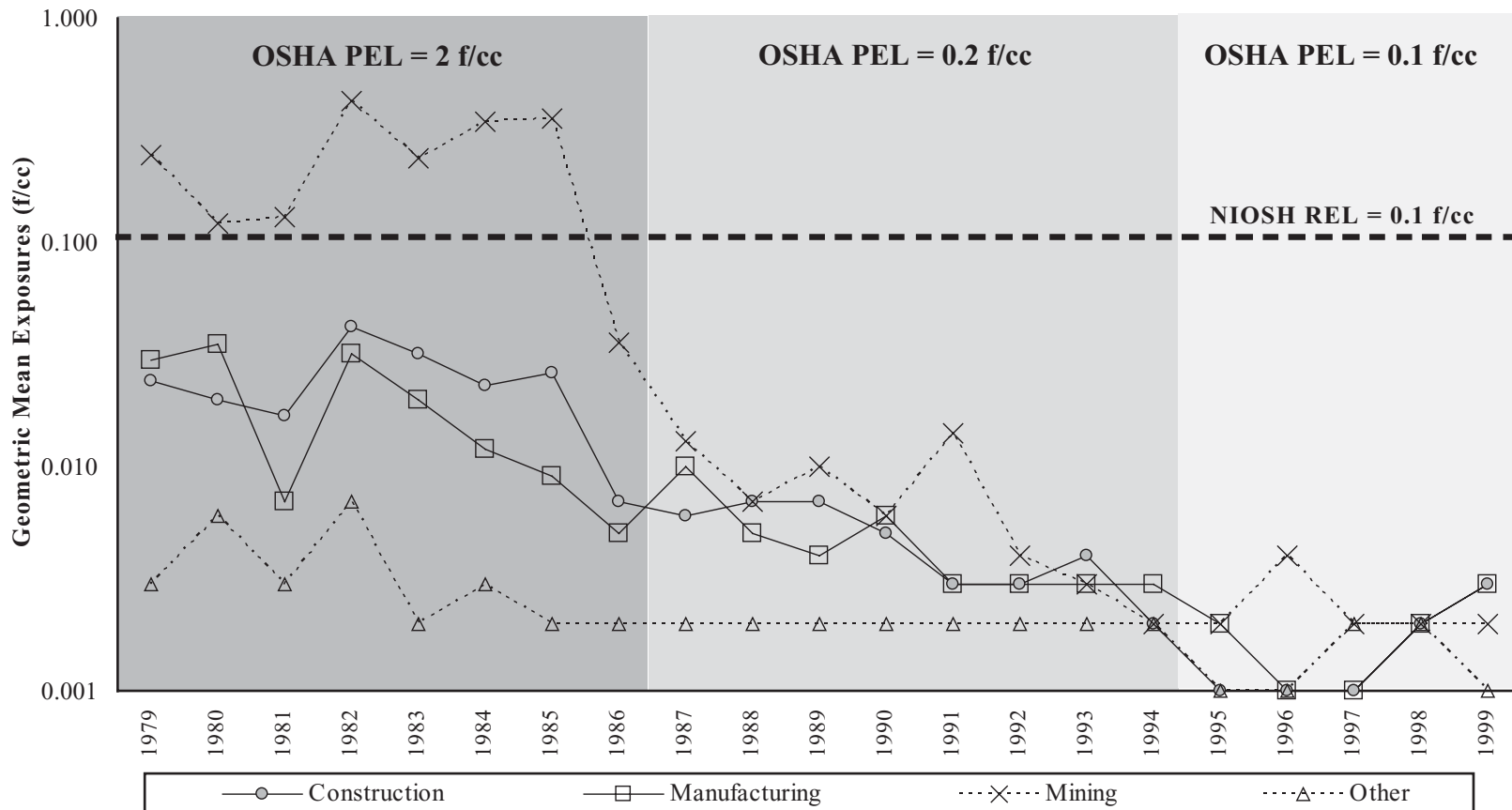


**Figure 1-5. Asbestos: Geometric mean exposures by major industry division, MSHA and OSHA samples, 1979-1999**



PEL - permissible exposure limit      REL - recommended exposure limit      f/cc - fibers per cubic centimeter

NOTE: The MSHA PEL is 2 f/cc. See appendices for source description, methods, and agents.

SOURCE: Mine Safety and Health Administration (MSHA) metal/nonmetal mine data. Occupational Safety and Health Administration (OSHA) Integrated Management Information System.