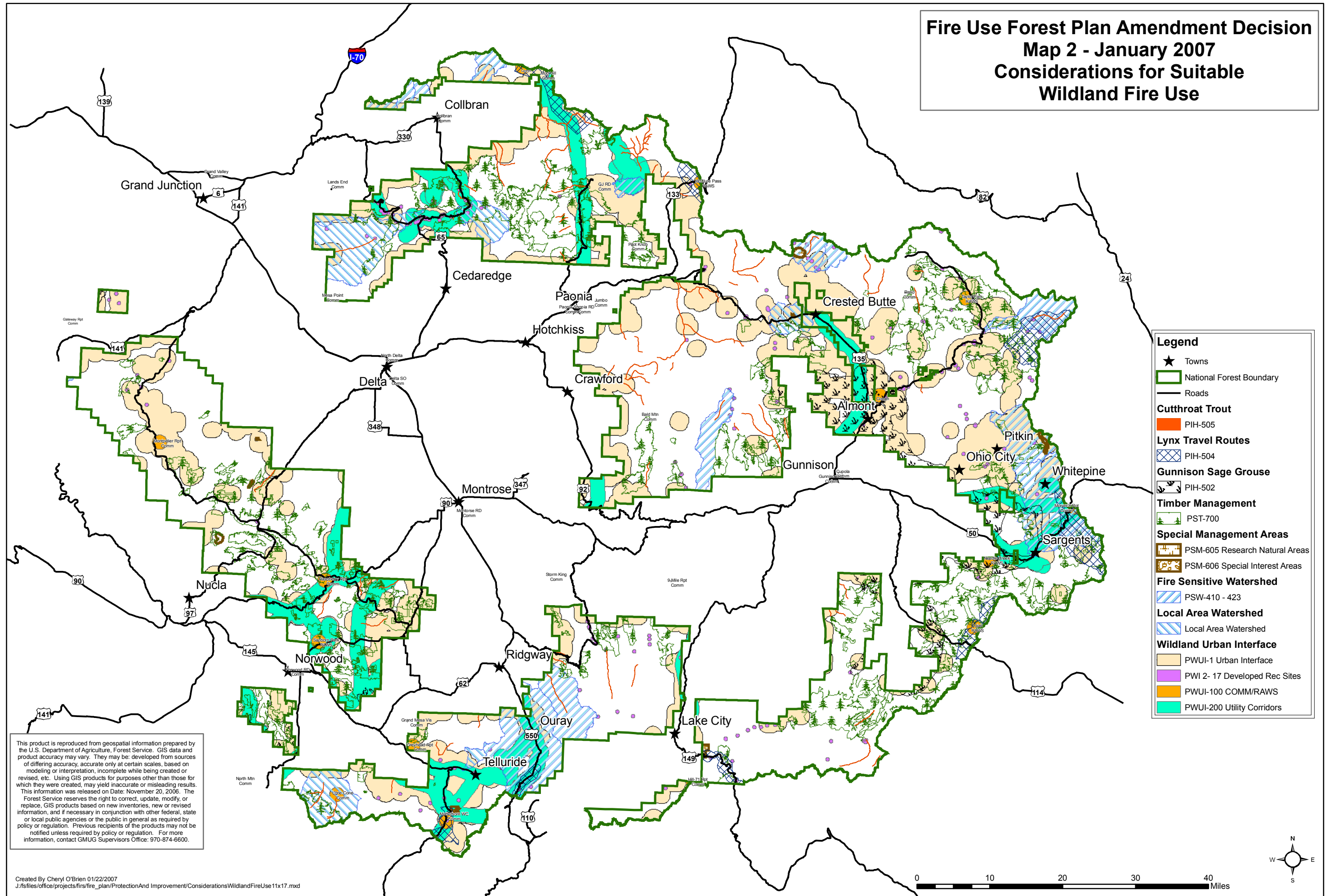


# Fire Use Forest Plan Amendment Decision

## Map 2 - January 2007

### Considerations for Suitable Wildland Fire Use



**Legend**

- ★ Towns
- ▭ National Forest Boundary
- Roads
- Cutthroat Trout**
- PIH-505
- Lynx Travel Routes**
- PIH-504
- Gunnison Sage Grouse**
- PIH-502
- Timber Management**
- PST-700
- Special Management Areas**
- PSM-605 Research Natural Areas
- PSM-606 Special Interest Areas
- Fire Sensitive Watershed**
- PSW-410 - 423
- Local Area Watershed**
- Local Area Watershed
- Wildland Urban Interface**
- PWUI-1 Urban Interface
- PWI 2- 17 Developed Rec Sites
- PWUI-100 COMM/RAWS
- PWUI-200 Utility Corridors

This product is reproduced from geospatial information prepared by the U.S. Department of Agriculture, Forest Service. GIS data and product accuracy may vary. They may be developed from sources of differing accuracy, accurate only at certain scales, based on modeling or interpretation, incomplete while being created or revised, etc. Using GIS products for purposes other than those for which they were created, may yield inaccurate or misleading results. This information was released on Date: November 20, 2006. The Forest Service reserves the right to correct, update, modify, or replace, GIS products based on new inventories, new or revised information, and if necessary in conjunction with other federal, state or local public agencies or the public in general as required by policy or regulation. Previous recipients of the products may not be notified unless required by policy or regulation. For more information, contact GMUG Supervisors Office: 970-874-6600.

