

Overview of the Incident Command System as Practiced in the United States

US Department of Agriculture
Forest Service





Basic ICS Concepts

- The ICS is a disaster response management organization structure: specific technical competency skills are integrated in the ICS organization
- ICS used on day-to-day basis for routine incidents as well as for major emergencies; activated at first response

For Example:
Day to Day Routine Incident
Structure Fire or Motor Vehicle
Accident





ICS Features

- Clear objectives and priorities
- Defined operational objectives and organization
- Incident Action Plan
 - Objectives and Priorities
 - Tactical Assignments
 - Communication Plan
 - Weather
 - Travel Routes/Maps
 - Organization Chart
 - Medical Plan
 - Air Operations Plan
 - Safety
- Common terminology



ICS Features (cont)

- Common communications
- Uniform resource typing
- Written Position Descriptions
 - Roles and responsibilities defined
 - Clear lines of authority, chain of command and reporting requirements
- Standardized personnel qualifications and training – national coordinating group



Five Major Management Activities

■ Command

- Sets objectives
- Sets priorities
- Overall responsibility at the incident

■ Planning

- Develops the action plan to accomplish the objectives
- Collects and evaluates information
- Maintains resource status
- Maintains incident documentation

Five Major Management Activities

■ Logistics

- Provides support to meet incident needs
- Provides resources and all other services needed to support the incident

■ Finance/Administration

- Monitors costs related to incident
- Provides accounting, procurement, time recording, and cost analyses

Five Major Management Activities

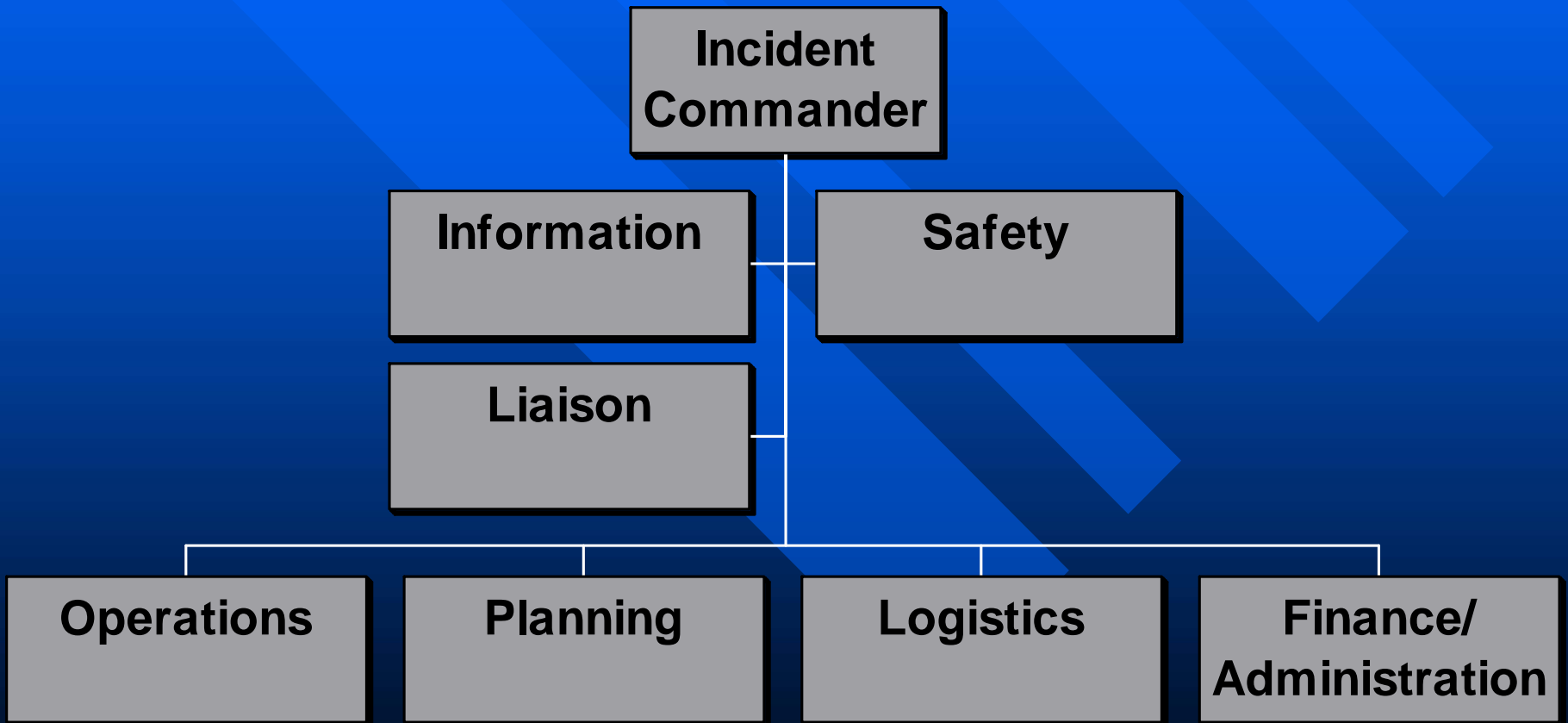
■ Operations

- Conducts tactical operations to carry out the plan
- Develops the tactical objectives, organization, and directs all resources



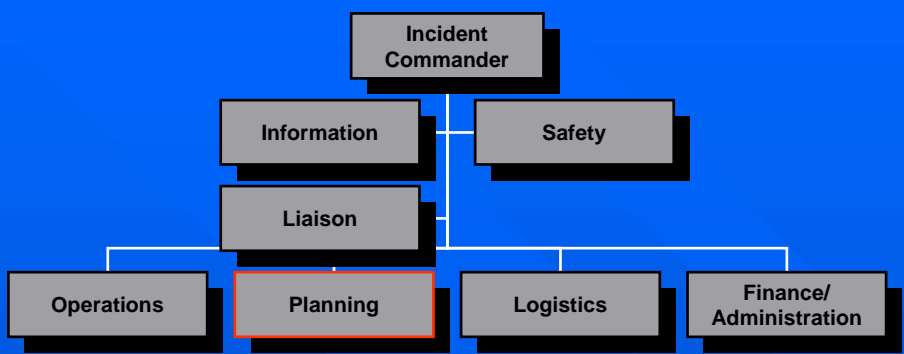
ICS

Major Organization Functions

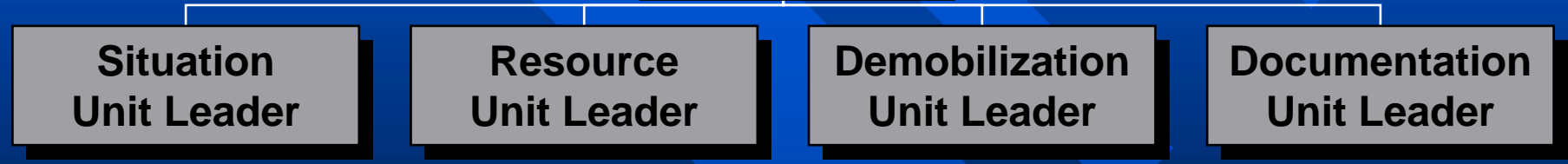




Planning



Planning Section Chief





For Example: World Trade Center



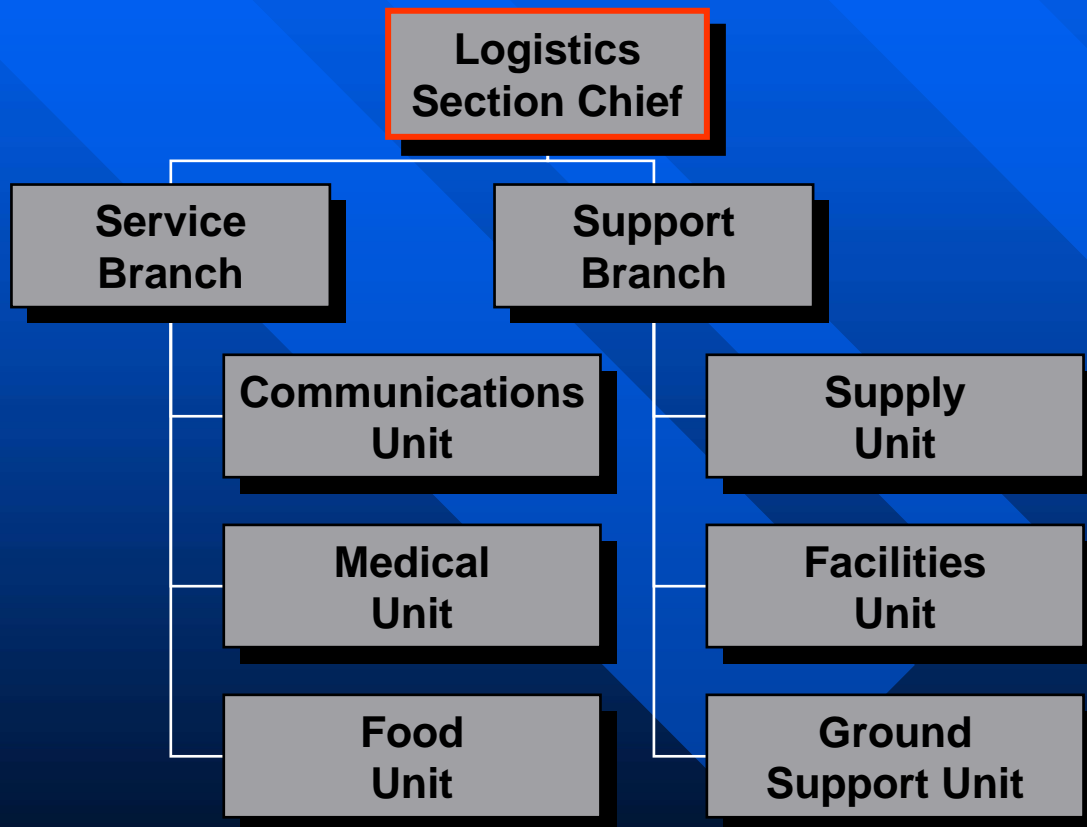
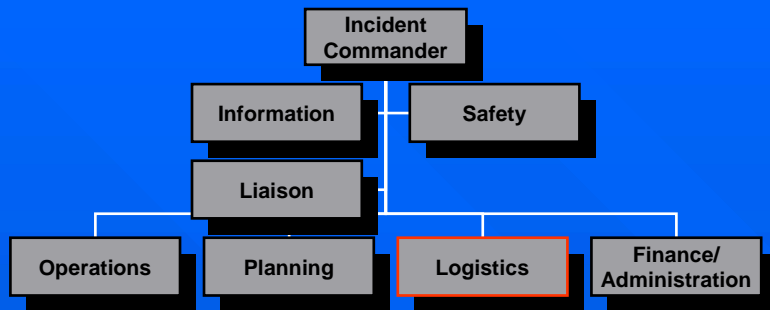
The World Trade Center

11 September, 2001

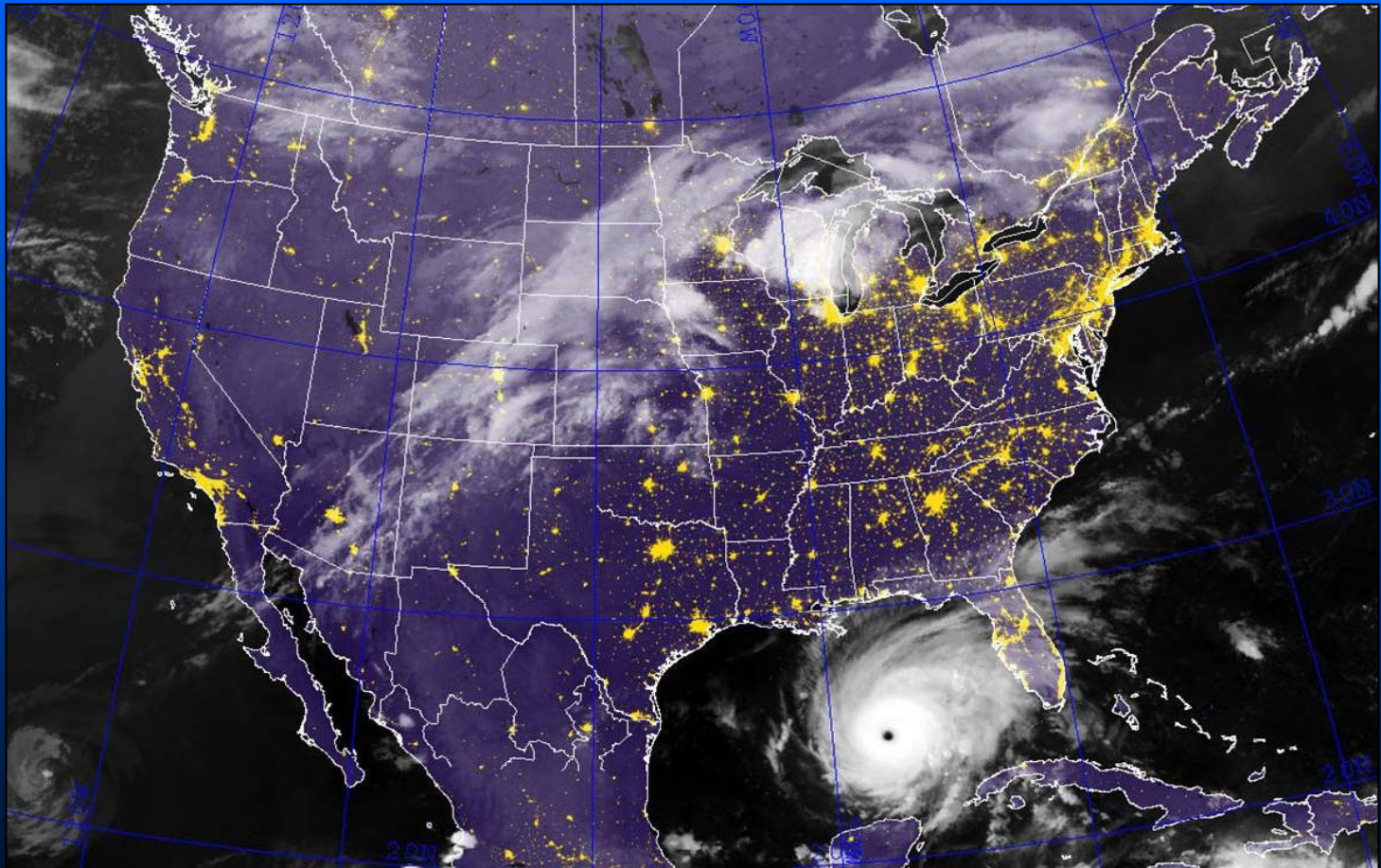
- The planning section was asked to develop a comprehensive plan for the rescue and recovery of the World Trade Center Disaster
- The Incident Action Plan included a summary of the cooperating agencies (26+), objectives, daily assignments and accounted for resources.



Logistics



For Example: Hurricane Rita



The challenge of bringing supplies while the evacuation is occurring...



Hurricane Rita

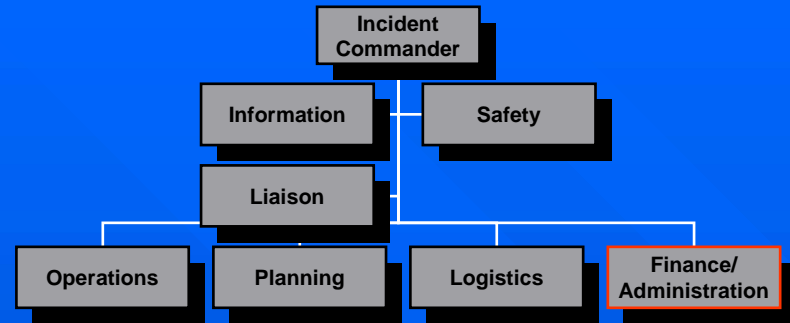
Texas

- An incident base was developed and managed to support in excess of 3,000 rescue personnel assigned to Eastern Texas.

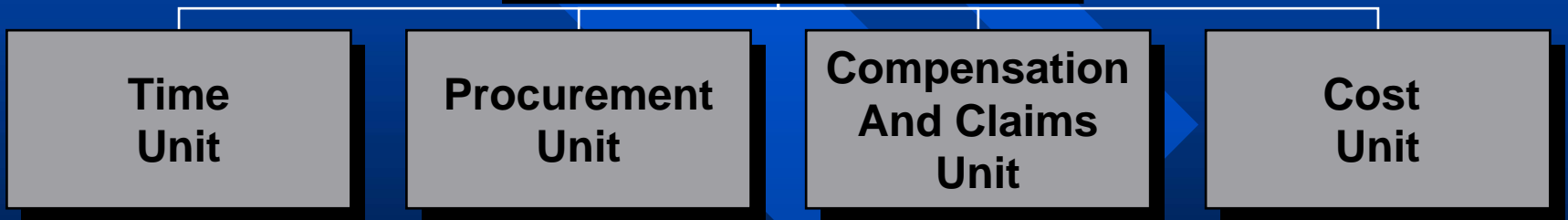




Finance/ Administration



Finance/Administration Section Chief



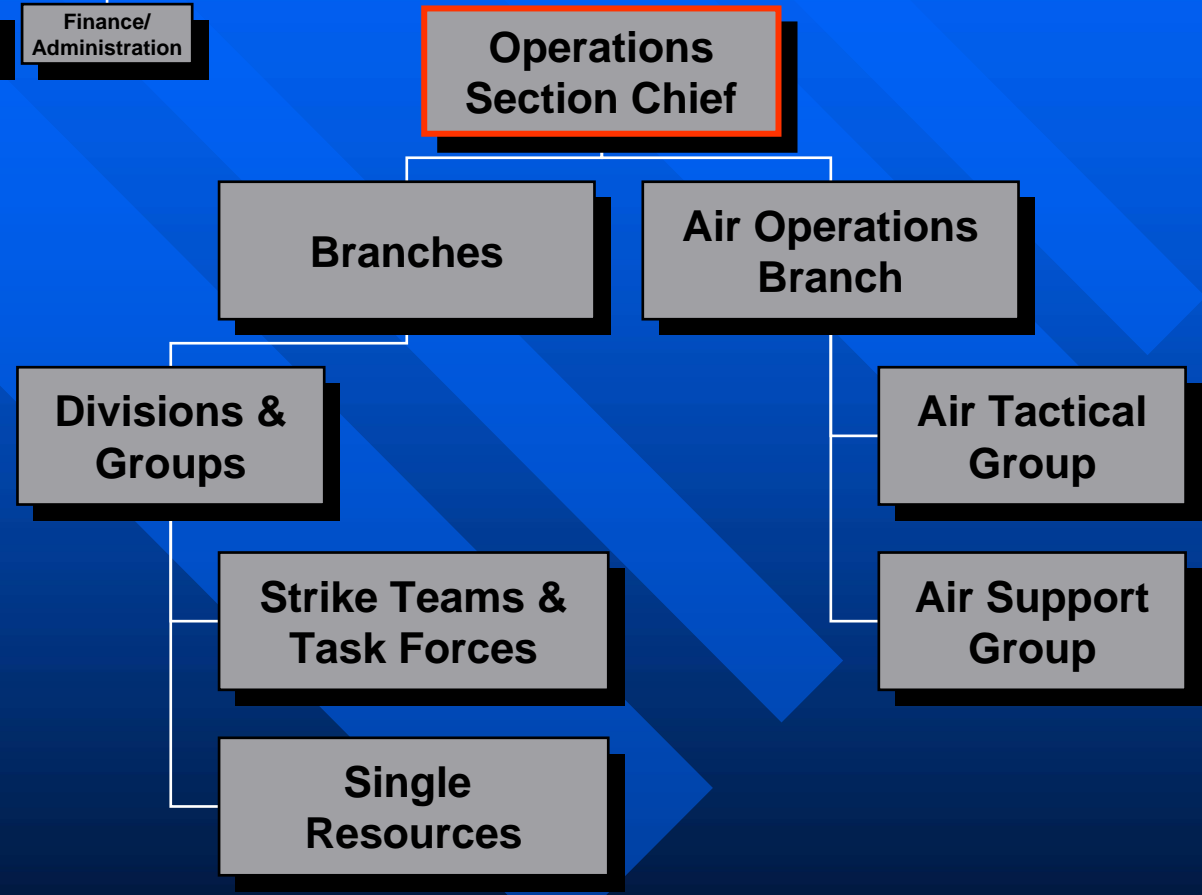
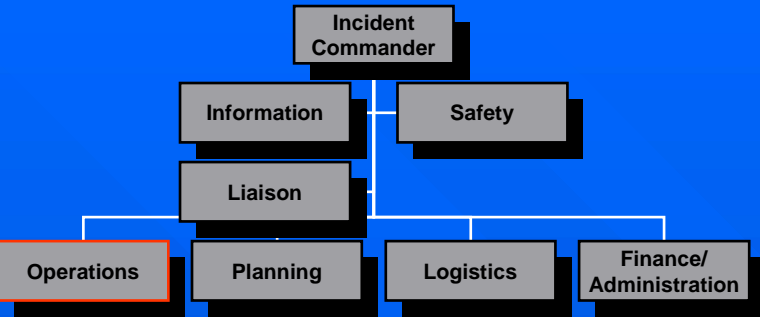


For Example: The Columbia Shuttle Recovery

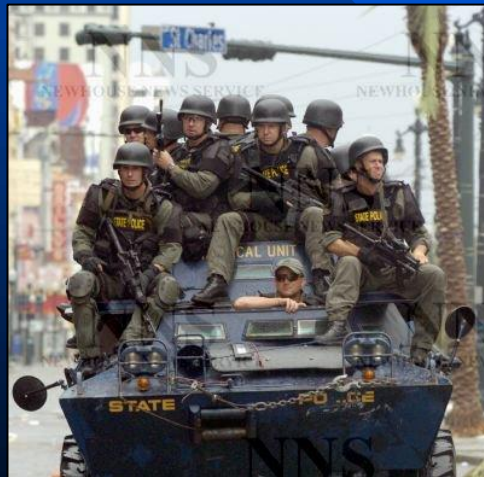




Operations



Initial Response





Span of Control

- Number of resources
- Complexity of the incident
- What is needed
- Safety
- Cost effectiveness
- Resource protection
- Effective leadership

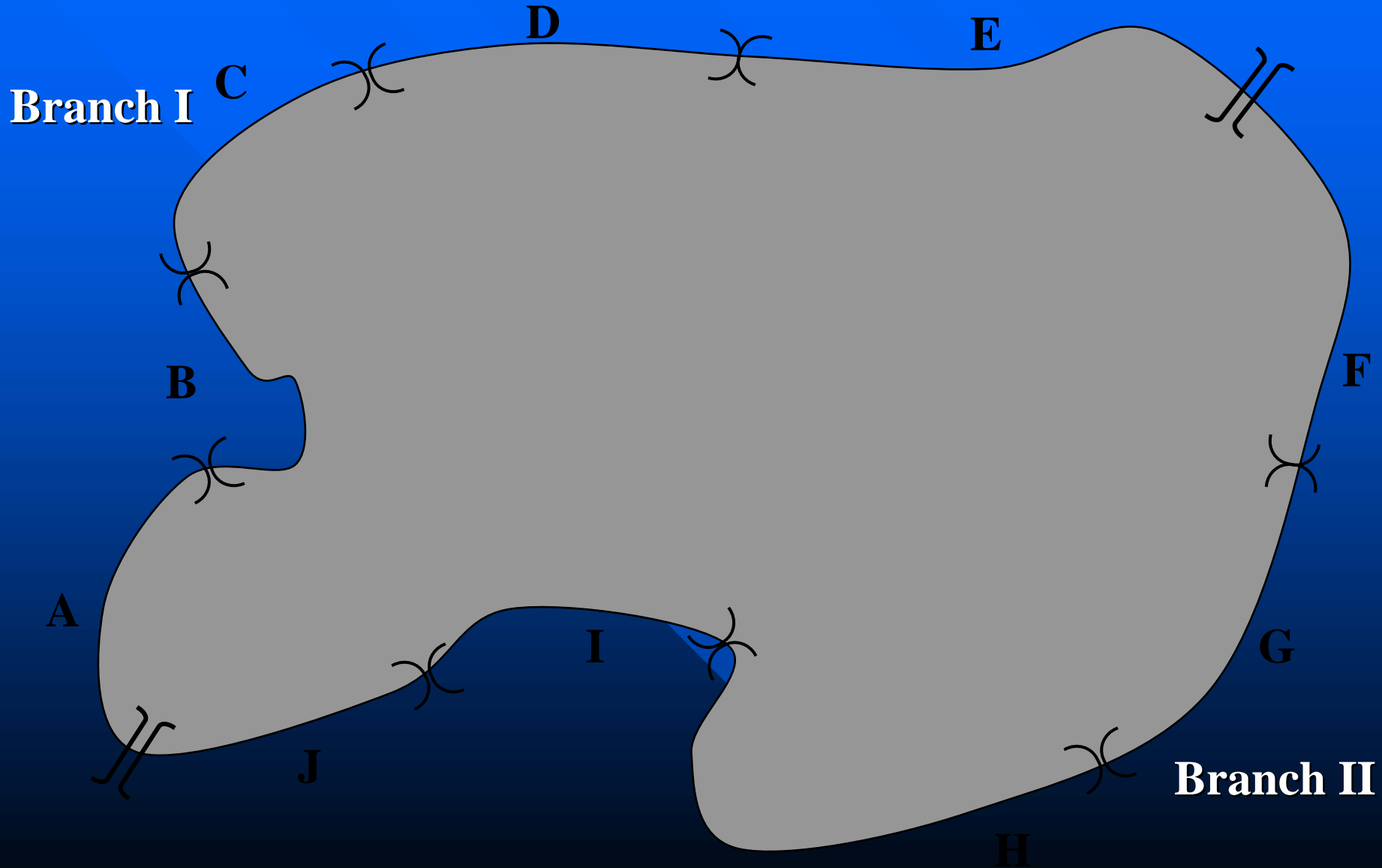


Flooding

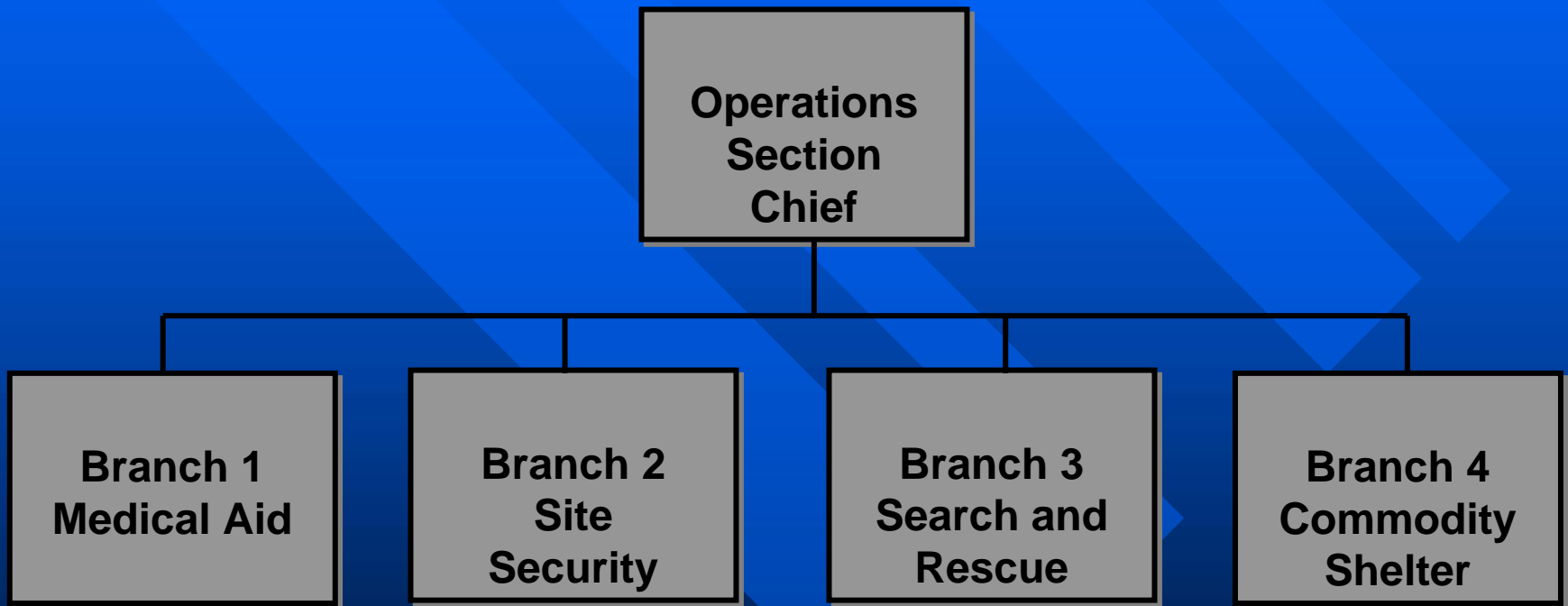




Flood Example Branches & Divisions



Earthquake Example – Functional Groups





Example: Small Incident

Mt. Saint Helens – Volcano

- The responsible official requested an Incident Management Team comprised of the Command and General Staff to monitor and develop a public safety and education program while the volcano was active and presented a potential threat to local communities.



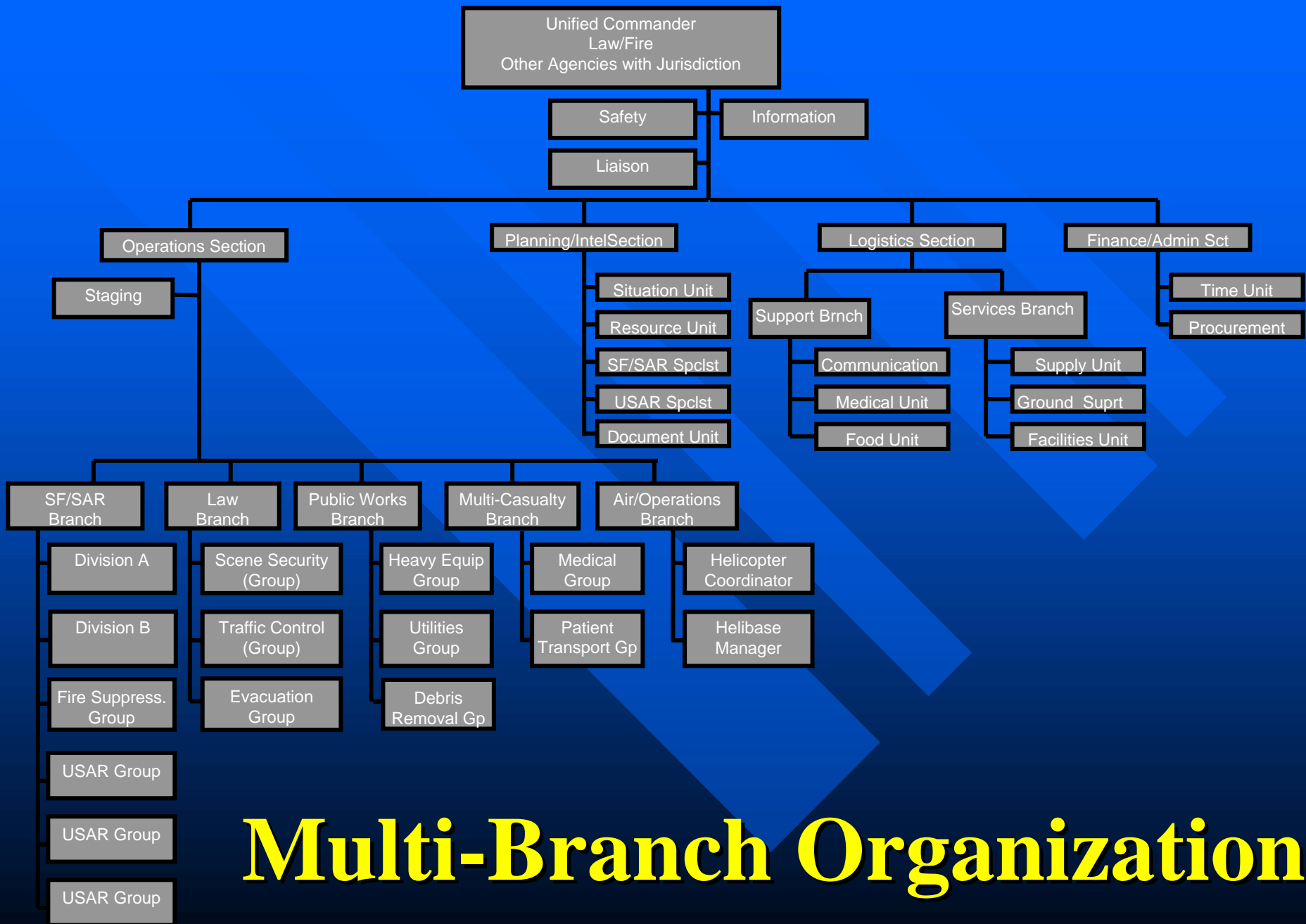
Example: Small to Complex Incident Fire – Dynamic



Example of a Complex Incident

Hurricane Ivan: Multi-Branch





Multi-Branch Organization



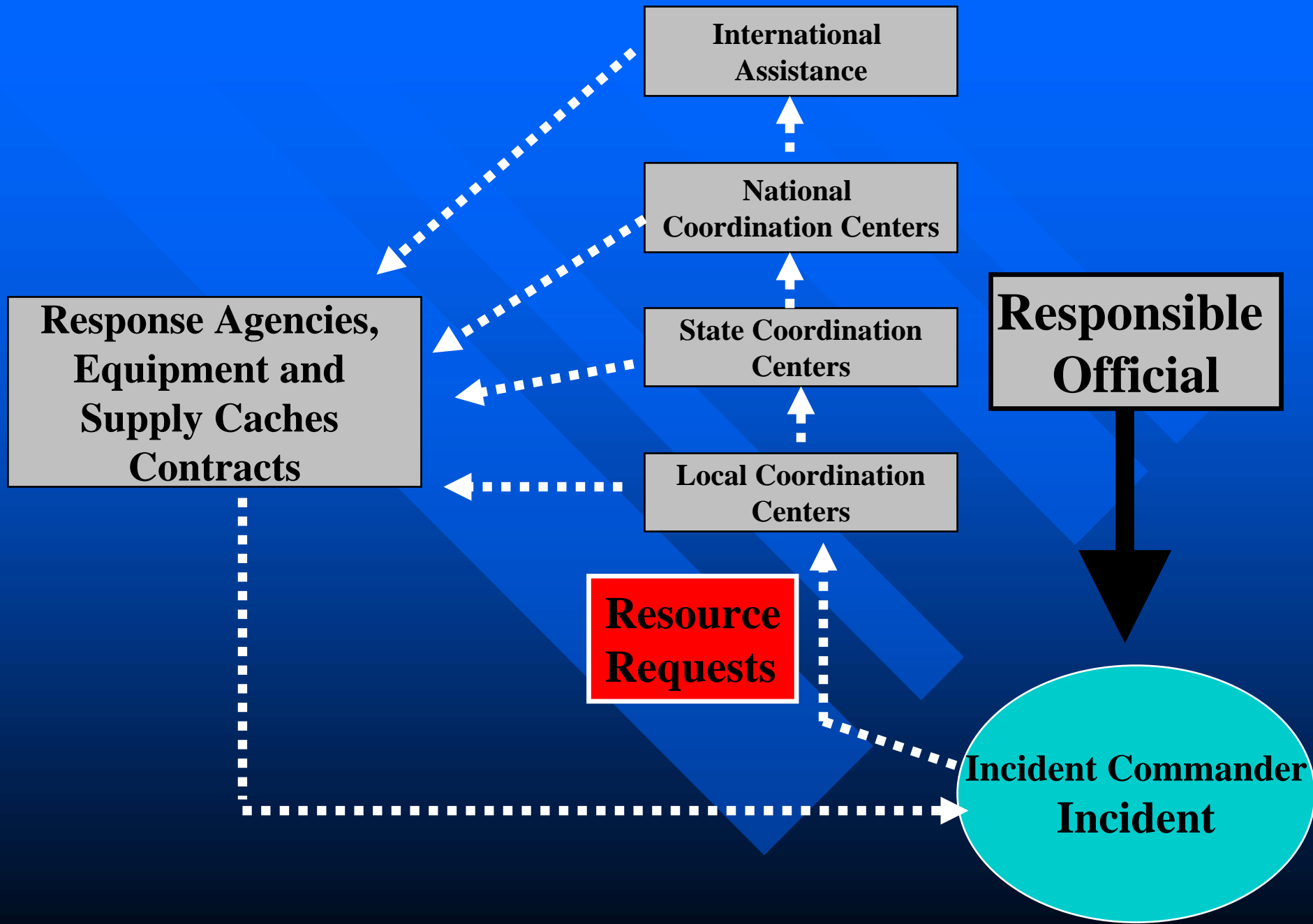
**Responsible
Official**



**Local
Incident
Commander**

**Type 2 Incident
Commander**

Type 1 Incident Commander





**Responsible
Official**

**Multi-Agency
Coordination
Groups**

**Incident Status
Situation Summary**

**Resource
Availability**

**Incident
Commander
Incident**

EOCs
Response Agencies

- Police
- Medical
- Fire & Rescue
- Public Works
- etc.





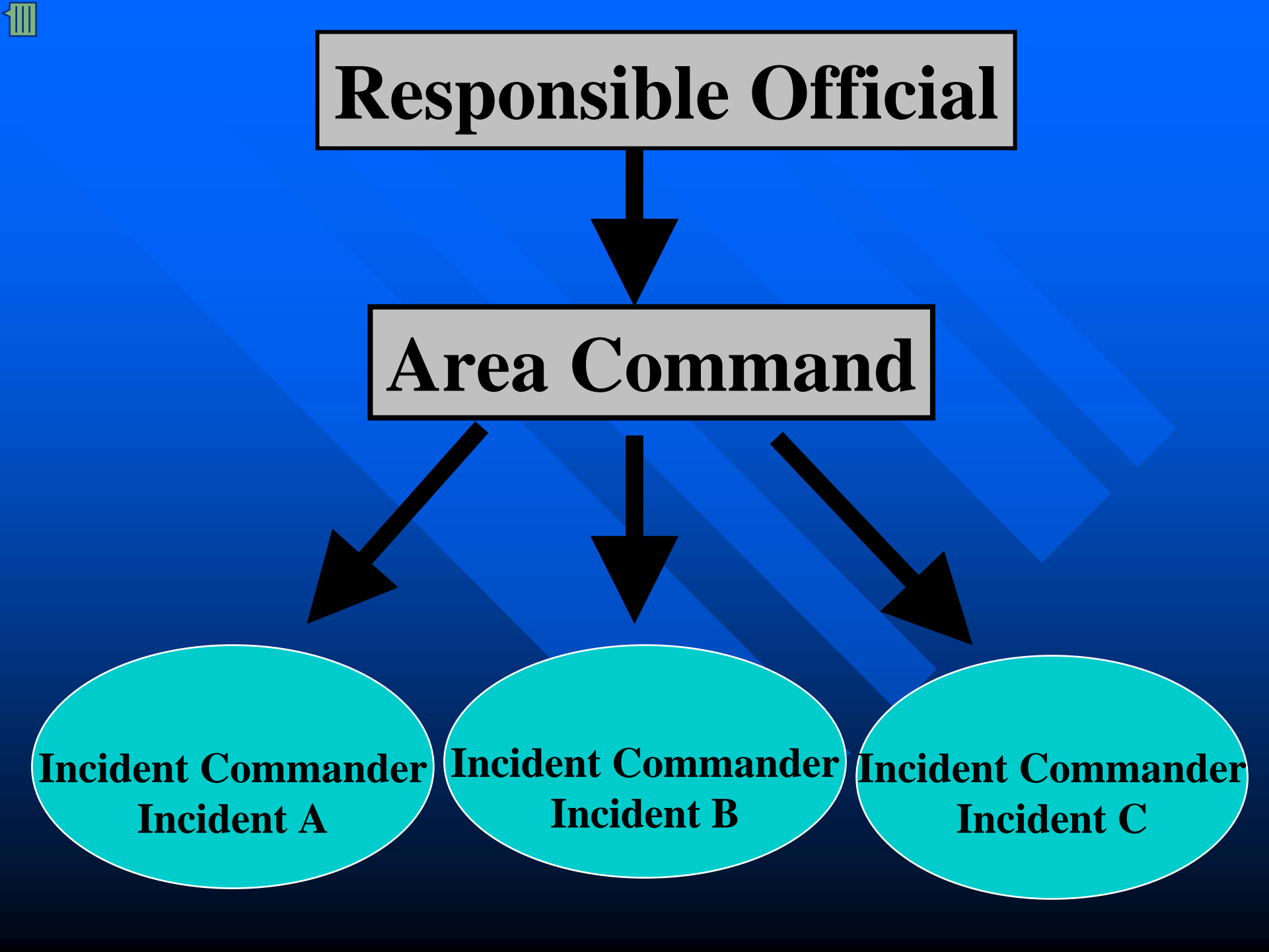
Responsible Official

Area Command

**Incident Commander
Incident A**

**Incident Commander
Incident B**

**Incident Commander
Incident C**





Key Points of ICS

- Delegation of Authority
- Flexible and dynamic
- Provides consistency
- Relies on functionalism
- Works on all incidents no matter the scope or size

Summary

Incident Command System

- Provides a Plan
- Organizes the resources
- Implements the actions
- Supports all personnel
- Effective Leadership Model

Questions?

