



## Tables and Maps for District-Specific Recreation Management Directions and National Landscape Conservation System Lands; and Maps for Visual Resource Classes and Wildlife Habitat Management Areas

Table 2-18 through Table 2-38 in this section correspond with district-specific directions, presented earlier in this chapter, for recreation areas and National Landscape Conservation System lands. The information in these tables is presented in the order of Salem, Eugene, Roseburg, Coos Bay, Medford (the five western Oregon BLM districts), and Klamath Falls (one of the resource areas of the Lakeview District). The numbers in the left column of some tables correspond to numbers on specified maps to show the locations of the areas.

The tables are organized in this section as follows:

- Recreation
  - Special recreation management areas
  - Extensive recreation management areas
  - Recreation sites
  - Recreation trails
  - Potential recreation sites
  - Potential recreation trails
  - Backcountry byways
  - Potential backcountry byways
  - Environmental education areas
  - Recreation and public purpose leases
  - Off-highway vehicle area designations
  - Areas closed to off-highway vehicle use
  - Off-highway vehicle emphasis areas
  - Potential off-highway vehicle emphasis areas
  - Oregon State scenic waterways
- National Landscape Conservation System designated lands
  - Wild and scenic rivers
  - Wilderness areas
  - Wilderness study areas and wilderness instant study areas
  - Miscellaneous National Landscape Conservation System and congressionally designated lands

Map 2-7 through Map 2-18 are placed after the tables, in the following order:

- Map 2-7 through Map 2-15: District-specific recreation areas
- Map 2-16: Lands designated as part of the National Landscape Conservation System
- Map 2-17: Visual resource management classes of the planning area under the PRMP
- Map 2-18: Bald eagle, deer, and elk habitat management areas



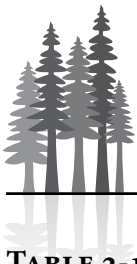
## Recreation

### Special Recreation Management Areas

Appendix K - Recreation contains the planning frameworks for all of the special recreation management areas that would be carried forward under the PRMP.

**TABLE 2-18. DISTRICT-SPECIFIC SPECIAL RECREATION MANAGEMENT AREAS**

Location # on Map 2-7 <sup>a</sup>	Special Recreation Management Area	No Action Alternative	Alternatives 1, 2 & 3	PRMP
		(acres)		
<b>Salem District</b>				
1	Alea Falls	N/A <sup>b</sup>	13,270	13,270
2	Fishermen's Bend	177	178	178
3	Little North Santiam River	3,282	3,282	3,282
	Marys Peak (potential)	N/A	-- <sup>c</sup>	--
	Mill Creek (potential)	N/A	--	--
4	Molalla River/Table Rock	11,875	11,875	11,875
	Mt. Hood Corridor	2,681	--	--
5	Nestucca River	1,074	1,074	1,074
	North Fork Siletz (potential)	N/A	--	--
	Sandy River	756	--	--
6	Sandy River/Mt. Hood Corridor	N/A	11,568	11,568
7	Yaquina Head	100	100	100
8	Yellowstone	38,257	38,261	38,261
	<b>Totals – Salem</b>	<b>58,202</b>	<b>79,608</b>	<b>79,608</b>
<b>Eugene District</b>				
	Gilkey Creek	N/A	--	--
9	Lower Lake Creek	1,873	1,873	1,873
10	McKenzie River	1,525	1,226	1,226
11	Row River Trail	15,115	171	171
12	Shotgun Creek	278	413	413
	Siuslaw River	N/A	--	--
13	Upper Lake Creek	12,675	12,676	12,676
	<b>Totals – Eugene</b>	<b>31,446</b>	<b>16,359</b>	<b>16,359</b>
<b>Roseburg District</b>				
14	Cow Creek	1,809	1,809	1,809
15	North Umpqua	1,903	8,512	8,512
16	Umpqua	2,240	457	457
	<b>Totals – Roseburg</b>	<b>5,952</b>	<b>10,778</b>	<b>10,778</b>
<b>Coos Bay District</b>				
17	Coos Bay Shorelands	1,754	1,754	1,754
18	Dean Creek Elk Viewing Area	1,136	1,136	1,136
	Gregory Point (potential)	N/A	--	--
19	Loon Lake	126	126	126



**TABLE 2-18. (CONTINUED)**

Location # on Map 2-7 <sup>a</sup>	Special Recreation Management Area	No Action Alternative	Alternatives 1, 2 & 3	PRMP
		(acres)		
20	New River	1,133	1,133	1,133
21	Sixes River	208	208	208
22	Tioga	N/A	34,013	34,013
<b>Totals – Coos Bay</b>		<b>4,357</b>	<b>38,370</b>	<b>38,370</b>
<b>Medford District</b>				
23	Anderson Butte	N/A	N/A	11,482
24	Coyote Creek	N/A	N/A	14,585
25	Elderberry Flat	N/A	N/A	3,393
26	Elliott Creek	N/A	N/A	3,931
	Galesville Lake (potential)	N/A	--	--
27	Hyatt Lake/Howard Prairie Lake	17,765	17,765	17,765
28	John's Peak	N/A	N/A	13,919
	Lost Creek Lake (potential)	N/A	--	--
29	Pacific Crest National Scenic Trail	7,088	7,088	7,088
30	Quartz Creek	N/A	N/A	8,727
31	Rogue National Wild and Scenic River	11,510	11,510	11,510
32	Spencer Creek	N/A	N/A	11,912
<b>Totals<sup>d</sup> - Medford</b>		<b>36,363</b>	<b>36,363</b>	<b>104,312</b>
<b>Klamath Falls Resource Area (of the Lakeview District)</b>				
33	Gerber	N/A	104,421	104,421
34	Hamaker Mountain	1,286	1,286	1,286
35	Pacific Crest National Scenic Trail	500	500	500
36	Stukel Mountain	11,853	11,853	11,853
37	Upper Klamath River	5,766	6,144	6,144
38	Wood River Wetland	N/A	3,122	3,220
<b>Totals – Klamath Falls</b>		<b>19,405</b>	<b>127,326</b>	<b>127,424</b>
<b>Total Acres – All Districts</b>		<b>155,745</b>	<b>308,804</b>	<b>376,851</b>

<sup>a</sup>Only those areas carried forward in the action alternatives are identified on Map 2-7.

<sup>b</sup>N/A denotes that acres or miles for a designated or potential site, trail, area, or byway were not identified under the No Action Alternative and/or the action alternatives.

<sup>c</sup>Two dashes (--) denote that a designated or potential site, trail, area, or byway either was not identified under the No Action Alternative, or would not be carried forward under the action alternatives.

<sup>d</sup>Ace totals for the Medford District include the Cascade-Siskiyou National Monument, which is located within the planning area. This national monument is managed under a separate resource management plan.



## Extensive Recreation Management Areas

**TABLE 2-19. DISTRICT-SPECIFIC EXTENSIVE RECREATION MANAGEMENT AREAS**

Extensive Recreation Management Areas <sup>a</sup>	No Action Alternative	Alternatives 1, 2 & 3	PRMP
	(acres)		
<b>Salem District</b>			
Cascades	113,640	105,509	105,509
Marys Peak	115,543	115,126	115,126
Tillamook	102,987	102,988	102,988
<b>Totals – Salem</b>	<b>332,170</b>	<b>323,623</b>	<b>323,623</b>
<b>Eugene District</b>			
Siuslaw	147,969	147,969	147,969
Upper Willamette	137,305	150,888	150,888
<b>Totals - Eugene</b>	<b>285,274</b>	<b>298,857</b>	<b>298,857</b>
<b>Roseburg District</b>			
South River	201,120	201,119	201,119
Swiftwater	221,027	214,419	214,419
<b>Totals - Roseburg</b>	<b>422,147</b>	<b>415,538</b>	<b>415,538</b>
<b>Coos Bay District</b>			
Myrtlewood	122,103	110,763	110,763
Umpqua	195,764	173,089	173,089
<b>Totals – Coos Bay</b>	<b>317,867</b>	<b>283,852</b>	<b>283,852</b>
<b>Medford District</b>			
Ashland	213,977	213,977	188,576
Butte Falls	203,761	203,761	200,368
Glendale	186,499	186,499	171,914
Grants Pass	227,627	227,627	203,057
<b>Totals - Medford<sup>b</sup></b>	<b>831,864</b>	<b>831,864</b>	<b>763,915</b>
<b>Klamath Falls Resource Area (of the Lakeview District)</b>			
Klamath Falls	208,138	97,571	97,571
<b>Totals – Klamath Falls</b>	<b>208,138</b>	<b>97,571</b>	<b>97,571</b>
<b>Total Acres - All Districts</b>	<b>2,397,460</b>	<b>2,251,305</b>	<b>2,183,356</b>

<sup>a</sup>See Map 2-7 for locations of extensive recreation management areas.

<sup>b</sup>Acre totals for the Medford District include the Cascade-Siskiyou National Monument, which is within the planning area. This national monument is managed under a separate resource management plan.





## Recreation Sites

**TABLE 2-20. DISTRICT-SPECIFIC RECREATION SITES**

Location # On Map 2-11 <sup>a</sup>	Recreation Site	No Action Alternative	Alternatives 1, 2, 3 and PRMP
		(acres)	
<b>Salem District</b>			
1	Alder Glen Campground and Day-Use Area	5	5
2	Alea Falls Campground and Day-Use Area	25	25
3	Canyon Creek Day-Use Area	4	4
4	Dogwood Day-Use Area	11	11
5	Dovre Campground and Day-Use Area	5	5
6	Elk Bend Campground and Day-Use Area	4	4
7	Elk Flat OHV Staging Area	1	1
8	Elkhorn Valley Campground and Day-Use Area	78	78
9	Fan Creek Campground and Day-Use Area	4	4
10	Fishermen's Bend Campground and Day-Use Area	177	177
11	Grassy Flat OHV Staging Area	1	1
12	Hardy Creek Trail Head	3	3
13	Mill Creek Day-Use Area	5	5
14	Missouri Bend Day-Use Area	2	2
15	Old Miner's Meadow Group Use Area	2	2
16	Sheridan Peak Day-Use Area	3	3
17	Whipup OHV Staging Area	1	1
18	Wildwood Day-Use Area	556	556
19	Yaquina Head Day-Use Area	90	90
20	Yellowbottom Campground and Day-Use Area	13	13
<b>Totals – Salem</b>		<b>990</b>	<b>990</b>
<b>Eugene District</b>			
21	Clay Creek Campground and Day-Use Area	48	48
22	Culp Creek Trailhead	1	1
23	Lake Creek Falls Day-Use Area	2	2
24	Marten Rapids Day-Use Area	2	2
25	McGowan Creek Environmental Education Area	79	79
26	Mosby Creek Trailhead	6	6
27	Rennie Landing	1	1
28	Sharps Creek Campground and Day-Use Area	27	27
29	Shotgun Creek Day-Use Area	278	278
30	Silver Creek Landing Day-Use Area	2	2
31	Taylor Landing Day-Use Area	4	4
32	Whitewater Day-Use Area	10	10
33	Whittaker Creek Campground and Day-Use Area	16	16
<b>Totals – Eugene</b>		<b>476</b>	<b>476</b>



TABLE 2-20. (CONTINUED)

Location # On Map 2-11 <sup>a</sup>	Recreation Site	No Action Alternative	Alternatives 1, 2, 3 and PRMP
		(acres)	
<b>Roseburg District</b>			
34	Cavitt Creek Falls	16	16
35	China Ditch	5	5
36	Cow Creek Backcountry Byway Kiosk	1	1
37	Cow Creek Recreational Gold Panning Area	19	19
38	Eagleview Group Campground	11	11
	E-Mile Recreation Site	15	-- <sup>b</sup>
39	Hill Creek Wayside	1	1
40	Island Creek Day-Use Area	40	40
41	Lone Pine Group Campground	23	23
42	Lone Rock Drift Boat Launch	1	1
43	Millpond	33	33
44	Miner-Wolf Watchable Wildlife Site	5	5
45	North Bank Ranch, Jackson Creek Day-Use Area	2	2
46	North Bank Ranch, West Entrance	1	1
47	Osprey Boat Ramp	4	4
48	Rock Creek	21	21
49	Scaredman	13	13
50	Susan Creek Campground	27	27
51	Susan Creek Day-Use Area	19	19
52	Susan Creek Falls Trailhead	3	3
53	Swiftwater Day-Use Area	5	5
54	Swiftwater Trailhead	8	8
55	Tyee	13	13
56	Wolf Creek Falls Trailhead	3	3
<b>Totals – Roseburg</b>		<b>289</b>	<b>274</b>
<b>Coos Bay District</b>			
57	Bear Creek Campground	80	80
	Big Tree Recreation Site	18	--
58	Burnt Mountain Campground	38	38
59	Cape Blanco Lighthouse (under permit from the U.S. Coast Guard)	35	35
60	Dean Creek Elk Viewing Area	1,136	1,136
61	East Shore Campground	52	52
62	Edson Creek Campground	46	46
63	Fawn Creek Campground	5	5
64	Loon Lake Campground	76	76
65	North Spit Boat Ramp	24	24
	Palmer Butte	40	--
66	Park Creek Campground	58	58



**TABLE 2-20. (CONTINUED)**

Location # On Map 2-11 <sup>a</sup>	Recreation Site	No Action Alternative	Alternatives 1, 2, 3 and PRMP
		(acres)	
67	Sixes River Campground	162	162
68	Smith River Falls Campground	47	47
69	Storm Ranch Day-Use Area	240	240
70	Vincent Creek Campground	4	4
<b>Totals – Coos Bay</b>		<b>2,061</b>	<b>2,003</b>
<b>Medford District<sup>c</sup></b>			
71	Argo River Access	16	16
72	Burma Pond Campground	15	41
73	Carpenter’s Island Day-Use Area	1	1
74	Chair Riffle Day-Use Area	16	16
75	Eight Dollar Mountain Botanical Wayside	20	43
76	Elderberry Flat Campground and Day-Use Area	80	75
77	Gold Nugget	53	49
78	Grave Creek Boat Ramp	4	4
79	Griffin Bar River Access	51	51
80	Hellgate Sites (Day Use and Viewpoints)	9	9
81	Hog Creek Boat Ramp	6	6
82	Hyatt Lake Campground and Day-Use Area (partially within the Cascade Siskiyou National Monument)	745	745
83	Kenney Meadows	40	34
84	Little Hyatt Lake Day-Use Area	2	2
85	Mt. Bolivar Trailhead (managed by the USFS)	2	2
86	Rainbow Day-Use Area	8	8
87	Rand Day-Use Area and Visitor Center	25	25
88	Robert Dean	14	14
89	Rocky Bar	46	46
90	Rogue River Ranch	33	33
91	Rough and Ready Wayside	22	22
92	Skull Creek Campground and Day-Use Area	5	19
93	Table Mountain Winter Play Area	10	11
94	Tucker Flat Campground and Day-Use Area	20	8
95	Whiskey Creek Cabin	5	5
96	Whitehorse River Access	76	76
97	Williams Creek Wayside	1	1
98	Woodrat Mountain Day-Use Area	20	27
<b>Totals – Medford<sup>c</sup></b>		<b>1,345</b>	<b>1,389</b>
<b>Klamath Falls Resource Area (of the Lakeview District)</b>			
99	Antelope Reservoir Day-Use Area	2	2
100	Barnes Valley Boat Ramp	6	6
101	Basin Camp	11	11



TABLE 2-20. (CONTINUED)

Location # On Map 2-11 <sup>a</sup>	Recreation Site	No Action Alternative	Alternatives 1, 2, 3 and PRMP
		(acres)	
102	Frain Ranch Campsites	310	310
103	Gerber Potholes Campsite	112	112
104	Gerber Recreation Site	496	496
105	Kilgore Reservoir Day-Use Area	2	2
106	Klamath River Campground	33	33
107	Lower Klamath Hills Day-Use Area	2	2
108	Miller Creek Campsite	9	9
109	Miller Creek Day-Use Area	2	2
110	Pitchlog Creek Campsite	10	10
111	Rock Creek Campsite	1	1
112	Round Valley Day-Use Area	2	2
113	Spring Island Boat Launch Site	6	6
114	Stan H. Spring Campsite	19	19
115	Stateline Boat Takeout	13	13
116	Surveyor Recreation Site	9	9
117	Topsy Campground	14	14
118	Twenty-One Reservoir Day-Use Area	2	2
119	Upper Midway Campsite	12	12
120	Wildhorse Campsite	7	7
121	Willow Valley Reservoir Boat Ramp	27	27
122	Wood River Wetland Day-Use Area	3,200	3,200
<b>Totals – Klamath Falls</b>		<b>4,307</b>	<b>4,307</b>
<b>Total Acres – All Districts</b>		<b>9,468</b>	<b>9,439</b>

<sup>a</sup> Only those sites carried forward in the action alternatives are identified on Map 2-11.

<sup>b</sup> Two dashes (--) denote that a designated or potential site, trail, area, or byway either was not identified under the No Action Alternative or would not be carried forward under the action alternatives.

<sup>c</sup> Acre totals for the Medford District include the Cascade-Siskiyou National Monument since it is located within the planning area. This national monument is managed under a separate resource management plan.



## Recreation Trails

TABLE 2-21. DISTRICT-SPECIFIC RECREATION TRAILS

Location # on Map 2-12	Recreation Trails	No Action Alternative (miles)	Alternatives 1, 2, 3 and PRMP (miles)
<b>Salem District</b>			
1	Alea Falls Trails System	4.0	4.0
2	Baty Butte/Silver King Trail	3.4	3.4
3	Boulder Ridge Trail	0.2	0.2
4	Eagle Creek Trail	0.5	0.5
5	McIntyre Ridge Trail	0.7	0.7
6	Molalla River Trails System	24.6	24.6
7	Nasty Rock Trail	0.9	0.9
8	Table Rock Wilderness Trails	20.4	20.4
9	Upper Nestucca OHV Trail System	25.0	25.0
10	Valley-of-the-Giants Trail	0.8	0.8
<b>Totals – Salem</b>		<b>80.5</b>	<b>80.5</b>
<b>Eugene District</b>			
11	Clay Creek Trail	1.3	1.3
12	Eagles' Rest Trail	0.7	0.7
13	Row River Trail	13.5	13.5
14	Shotgun Creek Recreation Site Trail	6.2	6.2
15	Shotgun (OHV) Trails System	23.7	23.7
16	Tyrrell Forest Succession Trail	1.0	1.0
17	Whittaker Creek Old Growth National Recreation Trail	2.5	2.5
<b>Totals – Eugene</b>		<b>48.9</b>	<b>48.9</b>
<b>Roseburg District</b>			
18	China Ditch Trail	0.4	0.4
19	Miner-Wolf Creek Watchable Wildlife Trail	0.2	0.2
20	North Umpqua Trail	12.3	12.3
21	Sawmill Trail	1.2	1.2
22	Susan Creek Complex Trails	0.8	0.8
23	Susan Creek Day-Use Trail	0.8	0.8
24	Susan Creek Falls Trail	0.8	0.8
25	Susan Creek Indian Mounds Trail	0.3	0.3
26	Wolf Creek Falls Trail	1.2	1.2
<b>Totals – Roseburg</b>		<b>18.0</b>	<b>18.0</b>
<b>Coos Bay District</b>			
27	Blue Ridge	10	10
28	Doerner Fir	0.5	0.5
29	Euphoria Ridge	4	4
30	Floras Lake	1	1
31	Fourmile Creek	0.3	0.3
32	Loon Lake Waterfall	0.5	0.5
33	Lost Lake	1	1



TABLE 2-21. (CONTINUED)

Location # on Map 2-12	Recreation Trails	No Action Alternative (miles)	Alternatives 1, 2, 3 and PRMP (miles)
34	New River/Storm Ranch	2	2
35	New River Water Trail	5	5
36	North Fork Hunter Creek	2	2
37	North Spit	9	9
<b>Totals – Coos Bay</b>		<b>35.3</b>	<b>35.3</b>
<b>Medford District</b>			
38	Armstrong Gulch	1	1
39	Buck Prairie Cross Country Ski/Snowmobile Trails	17	17
40	Burma Pond Trail	0.25	0.25
41	Cathedral Hill Trails	12	12
42	Grayback Mountain	6.5	6.5
43	Grizzly Peak	5	5
44	Hidden Creek	1	1
45	Jacksonville Historic Landmark	5	5
46	Kerby Peak	4	4
47	King Mountain Trail	1	1
48	Lake Selmac Trails	3	3
49	Layton Ditch Trail	13	13
50	Listening Tree	1	1
51	London Peak Accessible	1	1
52	Lower London Peak Trail	2	2
53	Lower Table Rock	2	2
54	Mule Creek	0.25	0.25
55	Pacific Crest National Scenic Trail	40	40
56	Pederson Snowmobile Trail	4	4
57	Rainie Falls Trail	2	2
58	Rogue River National Recreation Trail	23	23
59	Sterling Mine Ditch	10	10
60	Tunnel Ridge	1	1
61	Upper Table Rock	2	2
62	Wolf Gap	4	4
<b>Totals<sup>a</sup> - Medford</b>		<b>161</b>	<b>161</b>
<b>Klamath Falls Resource Area (of the Lakeview District)</b>			
63	Gerber-Miller Creek-Potholes Trail	13	13
64	Keno Spencer Snowmobile Trail	6	6
65	Pacific Crest National Scenic Trail	1	1
66	Pederson Snowmobile Trail	7	7
67	Rock Slide Loop Snowmobile Trail	5	5
68	Surveyor Peak Snowmobile Trail	3	3
69	Wood River Wetland Trail	1	1
<b>Totals – Klamath Falls</b>		<b>36</b>	<b>36</b>
<b>Total Miles – All Districts</b>		<b>379.7</b>	<b>379.7</b>

<sup>a</sup>Acre totals for the Medford District include the Cascade-Siskiyou National Monument since it is located within the planning area. This national monument is managed under a separate resource management plan.



## Potential Recreation Sites

**TABLE 2-22. DISTRICT-SPECIFIC POTENTIAL RECREATION SITES**

Location # on Map 2-13 <sup>a</sup>	Potential Recreation Sites	No Action Alternative	Alternatives 1, 2, 3 and PRMP
		(acres)	
<b>Salem District</b>			
1	Alder Glen Expansion	-- <sup>b</sup>	1
2	Alsea Falls Expansion	--	96
3	Barlow	--	115
	Bear Creek	N/A <sup>c</sup>	--
	Dick's Ridge	N/A	--
4	Marmot	--	155
5	Molalla River	--	86
	Parker Creek	N/A	--
	Quartzville Creek	N/A	--
	Valley of the Giants Trailhead	N/A	--
<b>Totals – Salem</b>		<b>N/A</b>	<b>453</b>
<b>Eugene District</b>			
6	Cottage Grove Old Growth Environmental Education Area	80	76
7	Deer Creek	--	12
	Doe Creek	N/A	--
	Edwards Creek	N/A	--
	Esmond Lake	N/A	--
	Fall Creek	N/A	--
	Fall Creek Reservoir	N/A	--
	Frying Pan	N/A	--
	Haight Creek	N/A	--
	Homestead	N/A	--
8	Hult Pond Campground	N/A	11
9	Hult Pond Day-Use Area	N/A	2
10	Hult Pond Equestrian Trailhead	N/A	1
	North Fork Gate Creek	N/A	--
11	Old Rennie Homestead	--	10
	Overland Trailhead	N/A	--
	Oxbow	N/A	--
	Red Bridge Trailhead	N/A	--
	Saleratus	N/A	--
	Sidog	N/A	--
	Siuslaw Bend	N/A	--
	Wolf Creek Falls	N/A	--
<b>Totals – Eugene</b>		<b>N/A</b>	<b>112</b>
<b>Roseburg District</b>			
	Brickyard Pond	N/A	--



TABLE 2-22. (CONTINUED)

Location # on Map 2-13 <sup>a</sup>	Potential Recreation Sites	No Action Alternative	Alternatives 1, 2, 3 and PRMP
		(acres)	
	Chimney Rock Pond	N/A	--
12	Chimney Rock Viewpoint Wayside	--	2
13	Doc's Landing Day-Use Area and Boat Ramp	--	11
	Hardscrabble	N/A	--
14	Hubbard Creek OHV Staging Area	--	10
15	Iron Mountain Gold Panning Site	--	40
	Lavadoire Boat Ramp	N/A	--
	Michigan Springs	N/A	--
16	North Umpqua Trail Primitive Campsite	--	4
	Olalla-Thompson Creek	N/A	--
17	Pickett Bridge	--	10
	Red Top Pond	N/A	--
	South River OHV Trailhead <sup>d</sup>	--	5
18	Susan Creek Group Campground	--	10
	Swiftwater OHV Trailhead <sup>d</sup>	--	5
19	Tioga Bridge / Wayside / Trailhead	--	25
20	Upper Susan Creek Falls Trailhead	--	2
	Weaver Road Pond	N/A	--
<b>Totals – Roseburg</b>		<b>N/A</b>	<b>124</b>
<b>Coos Bay District</b>			
21	Big Bend	N/A	200
	East Fairview Boat Ramp	N/A	--
22	Fawn Creek Boat Ramp	N/A	11
23	McKinley Camp	N/A	10
	Smith River Falls Boat Ramp	N/A	--
24	Smith River Log Dump	N/A	5
	South Sisters Rock	N/A	--
25	Spruce Reach Island Day-Use Area	--	15
26	Tioga Basin	N/A	30
	Umpqua Lighthouse	N/A	--
	Vincent Creek Boat Ramp	N/A	--
27	Wells Creek Guard Station	N/A	1
<b>Totals – Coos Bay</b>		<b>N/A</b>	<b>272</b>
<b>Medford District</b>			
	Galesville Reservoir	40	--
28	Little Applegate Day-Use Area	20	20
29	North Fork Big Butte Creek	20	19
30	Nugget Falls	5	5
31	Sensenig Falls	40	44





**TABLE 2-22. (CONTINUED)**

Location # on Map 2-13 <sup>a</sup>	Potential Recreation Sites	No Action Alternative	Alternatives 1, 2, 3 and PRMP
		(acres)	
32	Skookum Creek Wayside	5	10
33	Zane Gray's Cabin	NA	21
<b>Totals<sup>e</sup> - Medford</b>		<b>130</b>	<b>119</b>
<b>Klamath Falls Resource Area (of the Lakeview District)</b>			
34	Alkali Springs Day-Use Area	--	2
35	Bryant Mountain Horse Camp	2	2
36	Captain Jack Lake Camp	3	2
37	Clover Creek Day-Use Area	30	2
38	Dog Hollow Reservoir Day-Use Area	2	2
	Greensprings Highway Day-Use Area	20	--
39	Hamaker Mountain Snow Park Day-Use Area	30	2
40	Harpold Reservoir Camp	2	2
41	Hogback Mountain Day-Use Area	10	1
42	Horton Rim Trailhead	--	2
43	Klamath River Bypass Reach Fishing Access # 5 and # 6 Day-Use Area	--	4
44	Klamath River Powerhouse Shed Fishing Site Day-Use Area	--	2
45	Malone Dam Day-Use Area	--	2
46	Old Foundations Area Day-Use Area	5	4
47	Smith Reservoir Camp	3	2
48	South Gerber Boat Ramp Day-Use Area	--	1
49	Spencer Creek Day-Use Area	20	1
50	Stukel Mountain Aspen Grove Camp	10	2
51	Stukel Mountain Glider Launch Day-Use Area	5	2
52	Stukel Mountain Target Practice Day-Use Area	20	2
53	Swan Lake Rim Trail Access	5	2
54	Van Meter Reservoir Camp	10	2
<b>Totals – Klamath Falls</b>		<b>177</b>	<b>43</b>
<b>Total Acres – All Districts</b>		<b>N/A</b>	<b>1,123</b>

<sup>a</sup>Only the recreation sites carried forward in the action alternatives are identified on Map 2-13.

<sup>b</sup>Two dashes (--) denote that a designated or potential site, trail, area, or byway either was not identified under the No Action Alternative or would not be carried forward under the action alternatives.

<sup>c</sup>N/A denotes that acres or miles for a designated or potential site, trail, area, or byway were not identified under the No Action Alternative.

<sup>d</sup>Exact site yet to be determined; no mapped location.

<sup>e</sup>Acre totals for the Medford District include the Cascade-Siskiyou National Monument since it is located within the planning area. This national monument is managed under a separate resource management plan.



## Potential Recreation Trails

**TABLE 2-23. DISTRICT-SPECIFIC POTENTIAL RECREATION TRAILS**

Location # on Map 2-14 <sup>a</sup>	Potential Recreation Trails	No Action Alternative	Alternatives 1, 2, 3, and PRMP
		(miles)	
<b>Salem District</b>			
1	Baty Butte/Silver King Trail Expansion	-- <sup>b</sup>	8.2
2	Corvallis-to-Sea Trail	--	1.6
3	Crabtree Mountain	--	12.8
4	CZ Mainline Linear Trail	--	1.0
5	Dovre Trail	--	0.1
	Elkhorn Creek Trails	N/A <sup>c</sup>	--
6	Equestrian Trail	--	5.3
	Harry Mountain Trail	N/A	--
7	Jane Creek Trail	--	2.8
	Marys Peak Trail	N/A	--
8	Marmot Trails		8
9	Molalla Trails Expansion	--	17.5
10	Nestucca River Trail	--	7.8
	North Fork Alsea River Trail	N/A	--
11	Robb Mill Trail	--	3.1
12	Sandy River Trails		25
13	Table Rock Wilderness Trails		3.0
14	Wilhoit Springs Trails	--	2.6
	<b>Totals – Salem</b>	<b>N/A</b>	<b>98.8</b>
<b>Eugene District</b>			
15	Blue Mountain Trail	--	0.8
16	Hult Pond Equestrian Trails	N/A	7.2
17	Shotgun OHV Additions	N/A	10
	Siuslaw River Trail	N/A	--
18	South Bank McKenzie	N/A	5.1
19	Whittaker Creek Falls	N/A	1.5
	<b>Totals – Eugene</b>	<b>N/A</b>	<b>24.6</b>
<b>Roseburg District</b>			
	Alexander Butte Trail	N/A	--
	Ben Irving Reservoir Trail	N/A	--
	Bushnell-Irwin Rocks Trail	N/A	--
	Cougar Creek Trail	N/A	--
	Cow Creek Bluffs Trail	N/A	--
	Deadman Mountain Trail	N/A	--
20	Eagleview to Tyee Trail	--	1
21	Millpond to Rock Creek Trail	--	2
22	North Bank Ranch Trail	N/A	4
	Red Top Pond Trail	N/A	--
	Salt Creek Trail	N/A	--
23	Susan Creek to Tioga Bridge Trail	N/A	1



**TABLE 2-23. (CONTINUED)**

Location # on Map 2-14 <sup>a</sup>	Potential Recreation Trails	No Action Alternative	Alternatives 1, 2, 3, and PRMP
		(miles)	
	Tyee Mountain Trail	N/A	--
24	Upper Susan Creek Falls Trail	--	1
	Wolf Creek Falls Tr. Extension	N/A	--
<b>Totals – Roseburg</b>		<b>N/A</b>	<b>9</b>
<b>Coos Bay District</b>			
25	Bear Creek Extension	--	3
26	Brummit Creek Trail System	--	10
27	Coos Head Trail System	--	3
28	Doerner Fir Extension	--	1
29	Hunter Creek Bog	N/A	1
30	McKinley Camp Trail	N/A	1
31	Rocky Peak Trail	--	6
32	Roman Nose/Kentucky Creek	N/A	6
33	Upper Rock Creek	N/A	2
34	Wassen Creek	N/A	5
<b>Totals – Coos Bay</b>		<b>N/A</b>	<b>38</b>
<b>Medford District</b>			
35	Beacon Hill Trail	N/A	3
36	Buck Rock-Berry Rock Loop	10	10
37	East Fork Illinois Mining Ditch System	N/A	9
38	Horse Creek Ridge Trail	N/A	1.5
39	Eight Dollar Mountain River Access Trail	N/A	1
40	Green Top Loop	10	10
41	Illinois Valley Horse Trails	N/A	8
42	Medco Railroad (Eagle Point-Butte Falls)	50	50
43	Robert Dean Trail	N/A	12
44	Round Top Mountain	N/A	5
<b>Totals – Medford</b>		<b>70</b>	<b>109.5</b>
<b>Klamath Falls Resource Area (of the Lakeview District)</b>			
45	Applegate National Historic Trail	2	0.7
	Barnes Valley Creek	3	--
46	Bryant Mountain	16	10.4
47	Chase Mountain	13	6.1
	Clover Creek	0.5	--
48	Gerber-OC&E Trail	--	1.7
	Gerber Point	2.5	--
49	Gerber Potholes	4.5	5.4
50	Gerber Reservoir Loop Trail	--	18.2
51	Hamaker Mountain	5	5.1
52	Hogback Mountain Loop Trail	--	8.0
53	Horton Rim Trail	--	16.5
54	J.C. Boyle Reservoir-Keno Trail	--	0.2
	Klamath River Edge Trail	2.5	--



TABLE 2-23. (CONTINUED)

Location # on Map 2-14 <sup>a</sup>	Potential Recreation Trails	No Action Alternative	Alternatives 1, 2, 3, and PRMP
		(miles)	
55	Lower Klamath Hills Trail	--	5.0
56	Old Baldy Trail	3.5	2.3
57	Spencer Creek	2	3.4
58	Stukel Mountain	--	6.1
59	Stukel Mountain OHV Trail	9	12.9
60	Surveyor Mountain/Johnson Creek	3	1.4
61	Swan Lake Rim	14	18.2
62	Upper Klamath River Trail (north side)	8.5	1.0
63	Upper Klamath River Trail (south side)	10	14.8
<b>Totals – Klamath Falls</b>		<b>99</b>	<b>137.4</b>
<b>Total Miles – All Districts</b>		<b>N/A</b>	<b>417.3</b>

<sup>a</sup>Only those trails carried forward in the action alternatives are identified on Map 2-14.

<sup>b</sup>Two dashes (--) denote that a designated or potential site, trail, area, or byway either was not identified under the No Action Alternative, or would not be carried forward under the action alternatives.

<sup>c</sup>N/A denotes that acres or miles for a designated site, trail, area or byway were not identified under the No Action Alternative.



## Backcountry Byways

**TABLE 2-24. DISTRICT-SPECIFIC BACKCOUNTRY BYWAYS**

Location # On Map 2-10	Backcountry Byways	No Action Alternative	Alternatives 1, 2, 3, and PRMP
		(miles)	
<b>Salem District</b>			
1	Nestucca River	29	29
2	Quartzville	12.5	12.5
3	South Fork Alsea River	11	11
<b>Totals – Salem</b>		<b>52.5</b>	<b>52.5</b>
<b>Eugene District</b>			
No backcountry byways.			
<b>Roseburg District</b>			
4	Cow Creek	20	20
5	North Umpqua National Scenic Byway	8.4	8.4
<b>Totals – Roseburg</b>		<b>28.4</b>	<b>28.4</b>
<b>Coos Bay District</b>			
No backcountry byways.			
<b>Medford District</b>			
6	Cow Creek	10	10
7	Galice-Hellgate	39	39
8	Grave Creek-Marial	38	38
<b>Totals – Medford</b>		<b>87</b>	<b>87</b>
<b>Klamath Falls Resource Area (of the Lakeview District)</b>			
No backcountry byways.			
<b>Total Miles – All Districts</b>		<b>167.9</b>	<b>167.9</b>



## Potential Backcountry Byways

**TABLE 2-25. DISTRICT-SPECIFIC POTENTIAL BACKCOUNTRY BYWAYS**

Location # on Map 2-10 <sup>a</sup>	Potential Backcountry Byways	No Action Alternative	Alternatives 1, 2, 3, and PRMP
		(miles)	
<b>Salem District</b>			
	No potential backcountry byways		
<b>Eugene District</b>			
	Alsea	N/A <sup>b</sup>	-- <sup>c</sup>
	Blue Mountain	N/A	--
9	Calapooya Divide	28.0	28.0
10	Coburg Hills	43.4	43.4
11	Lost Creek	19.7	19.7
12	Mill Pond	10.7	10.7
	Oxbow	N/A	--
13	Siuslaw River	25.3	25.3
	Whittaker Creek Area	N/A	--
	<b>Totals – Eugene</b>	<b>127.1</b>	<b>127.1</b>
<b>Roseburg District</b>			
	Coos Bay Wagon Road	N/A	--
	Loon Lake	N/A	--
	Smith River	N/A	--
	<b>Totals – Roseburg</b>	<b>N/A</b>	<b>0</b>
<b>Coos Bay District</b>			
	Coos Bay Wagon Road	N/A	--
	Mill Creek/Loon Lake/Tyee	N/A	--
	Myrtlepoint to Sitkum Road	N/A	--
	Smith River Road	N/A	--
	South Sisters-Oxbow Access Road	N/A	--
	<b>Totals – Coos Bay</b>	<b>N/A</b>	<b>0</b>
<b>Medford District</b>			
14	Cow Creek-West Fork Evans Creek Road	40	40
15	Hyatt Lake-Howard Prairie Lake	10	10
16	McKee Bridge-Anderson Butte	16	16
17	Shale City	10	10
18	West Fork Cow Creek-Eden Valley	23	23
	<b>Totals – Medford<sup>d</sup></b>	<b>99</b>	<b>99</b>
<b>Klamath Falls Resource Area (of the Lakeview District)</b>			
19	Gerber Area Watchable Wildlife Tour/Modoc Trail	30	28.8
20	Topsy Road	15	5.9
	<b>Totals – Klamath Falls</b>	<b>45</b>	<b>34.7</b>
	<b>Total Miles – All Districts</b>	<b>271.1</b>	<b>260.8</b>

<sup>a</sup>Only the byways carried forward to the action alternatives are identified on Map 2-10.

<sup>b</sup>N/A denotes that acres or miles for a designated or potential site, trail, area, or byway were not identified under the No Action Alternative.

<sup>c</sup>Two dashes (--) denote that a designated or potential site, trail, area, or byway either was not identified under the No Action Alternative or would not be carried forward under the action alternatives.

<sup>d</sup>Acre totals for the Medford District include the Cascade-Siskiyou National Monument since it is located within the planning area. This national monument is managed under a separate resource management plan.



## Environmental Education Areas

**TABLE 2-26. DISTRICT-SPECIFIC ENVIRONMENTAL EDUCATION AREAS**

Environmental Education Areas	No Action Alternative	Alternatives 1, 2, 3, and PRMP
	(acres)	
<b>Salem District</b>		
Aquila Vista	178	178
Larch Mountain	183	183
<b>Totals – Salem</b>	<b>361</b>	<b>361</b>
<b>Eugene District</b>		
Cottage Grove Old Growth	80	76
McGowan Creek	79	79
<b>Totals – Eugene</b>	<b>159</b>	<b>155</b>
<b>Roseburg District</b>		
North Bank Habitat Management Area	0	50
<b>Totals – Roseburg</b>	<b>0</b>	<b>50</b>
<b>Coos Bay District</b>		
Dean Creek Elk Viewing Area	-- <sup>a</sup>	1,136
New River ACEC	--	1,356
Powers	70	70
<b>Totals – Coos Bay</b>	<b>70</b>	<b>2,562</b>
<b>Medford District</b>		
Eight Dollar Mountain	20	20
Upper and Lower Table Rocks	80	80
<b>Totals – Medford</b>	<b>100</b>	<b>100</b>
<b>Klamath Falls Resource Area (of the Lakeview District)</b>		
Clover Creek	6	6
Surveyor Forest	192	192
<b>Totals – Klamath Falls</b>	<b>198</b>	<b>198</b>
<b>Total Acres – All Districts</b>	<b>888</b>	<b>3,426</b>

<sup>a</sup>Two dashes (--) denote that a designated or potential site, trail, area, or byway either was not identified under the No Action Alternative, or would not be carried forward under the action alternatives.



## Recreation and Public Purpose Leases

**TABLE 2-27. DISTRICT-SPECIFIC RECREATION AND PUBLIC PURPOSE LEASES**

R&PP Leases (and Lessee)	No Action Alternative	Alternatives 1, 2, 3, and PRMP
	(acres)	
<b>Salem District</b>		
JJ Collins Memorial Park (Columbia County)	2	2
Little North Fork (Marion County)	11	11
Oxbow (Multnomah County)	279	279
Scaponia (Columbia County)	5	5
Silver Falls State Park (State of Oregon)	230	230
Wells Island (Polk County)	73	73
<b>Totals – Salem</b>	<b>600</b>	<b>600</b>
<b>Eugene District</b>		
McKercher Park (Linn County)	2	2
Willamette River Greenway (Oregon State Parks)	3	3
<b>Totals – Eugene</b>	<b>5</b>	<b>5</b>
<b>Roseburg District</b>		
E-Mile County Park (Douglas County)	N/A <sup>a</sup>	15
Richard Baker County Park (Douglas County)	7.5	7.5
<b>Totals – Roseburg</b>	<b>7.5</b>	<b>22.5</b>
<b>Coos Bay District<sup>b</sup></b>		
Frona Park (Coos County)	80	80
Judge Hamilton Park (Coos County)	88	88
Laverne County Park (Coos County)	120	120
Middle Creek Park (Coos County)	78	78
Rock Prairie Park (Coos County)	160	160
<b>Totals – Coos Bay</b>	<b>526</b>	<b>526</b>
<b>Medford District</b>		
Cantrall-Buckley Park (Jackson County)	12.1	12.1
Cathedral Hills (Josephine County) <sup>c</sup>	400	--
Gold Ray Dam (Jackson County)	4.2	4.2
Illinois River Park (Oregon Department of Transportation)	80	80
Lake Selmac (Josephine County)	48	48
Pinehurst School (Jackson County School District 94)	11.2	11.2
<b>Totals – Medford</b>	<b>555.5</b>	<b>155.5</b>
<b>Klamath Falls Resource Area (of the Lakeview District)</b>		
No R&PP leases.		
<b>Total Acres – All Districts</b>	<b>1,694</b>	<b>1,309</b>

<sup>a</sup>N/A denotes that acres or miles for a designated or potential site, trail, area, or byway were not identified under the No Action Alternative.

<sup>b</sup>Recreational leases with Coos County were established prior to the R&PP Act as congressional withdrawals to Coos County for recreational purposes and are termed congressionally designated recreation withdrawals.

<sup>c</sup>At the county's request, the Cathedral Hills R&PP lease with Josephine County will not be renewed in 2008.





## Off-Highway Vehicle Area Designations

**TABLE 2-28. DISTRICT-SPECIFIC OFF-HIGHWAY VEHICLE AREA DESIGNATIONS**

Off-Highway Vehicle Area Designations	No Action	Alternative 1	Alternative 2	Alternative 3	PRMP
	(acres)				
<b>Salem District</b>					
Open	160,614	0	0	0	0
Limited to existing roads and trails	48,771	0	0	0	0
Limited to existing roads and designated trails	87,144	0	0	0	0
Limited to designated roads and trails	16,192	274,907	274,777	276,909	274,600
Limited to designated roads	69,508	85,165	85,165	85,165	85,165
Closed	17,439	39,372	39,469	37,314	39,646
<b>Eugene District</b>					
Open	0	77	77	77	0
Limited to existing roads and trails	320,883	0	0	0	0
Limited to designated roads and trails	0	321,207	321,151	321,166	321,138
Closed	3,281	3,017	2,905	2,885	3,277
<b>Roseburg District</b>					
Open	0	0	0	0	0
Limited to existing roads and trails	416,560	0	0	0	0
Limited to designated roads and trails	6,731	423,986	423,986	423,986	423,986
Closed	3,964	3,317	3,317	3,317	3,317
<b>Coos Bay District</b>					
Open	0	0	0	0	0
Limited to designated roads and trails	318,676	318,676	318,676	318,718	318,437
Closed	3,605	3,605	3,605	3,557	3,844
<b>Medford District</b>					
Open	139,878	0	0	0	0
Limited to existing roads and trails	26,514	0	0	0	0
Limited to designated roads and trails <sup>a</sup>	661,357	829,664	826,476	829,664	825,843
Closed <sup>a</sup>	59,150	57,320	60,512	57,305	60,508
<b>Klamath Falls Resource Area</b>					
Open	29,902	0	0	0	0
Limited to existing roads and trails	137,154	0	0	0	0



TABLE 2-28. (CONTINUED)

Off-Highway Vehicle Area Designations	No Action	Alternative 1	Alternative 2	Alternative 3	PRMP
	(acres)				
Limited to designated roads and trails	47,222	213,747	214,010	214,010	214,010
Closed	10,703	10,971	10,971	10,971	10,971
<b>All Western Oregon BLM Lands</b>					
Open	330,394	77	77	77	0
Limited to existing roads and trails	949,882	0	0	0	0
Limited to existing roads and designated trails	87,144	0	0	0	0
Limited to designated roads and trails	1,050,160	2,382,187	2,379,076	2,384,453	2,378,014
Limited to designated roads	69,508	85,165	85,165	85,165	85,165
Closed	97,388	116,823	120,197	114,820	121,336

<sup>a</sup>Acre totals for the Medford District include the Cascade-Siskiyou National Monument since it is located within the planning area. This national monument is managed under a separate resource management plan.



## Areas Closed to Off-Highway Vehicle Use

**TABLE 2-29. AREAS CLOSED TO OFF-HIGHWAY VEHICLE USE, BY ALTERNATIVE**

Closed (areas closed to off-highway vehicle use) <sup>a</sup>	No Action Alternative	Alternative 1	Alternative 2	Alternative 3	PRMP
<b>Salem District</b>					
Alea Falls East Elk Emphasis Areas	0	520	520	520	520
Bummer Ridge Elk Emphasis Areas	0	3,566	3,566	3,566	3,566
Crabtree Complex RNA/ONA/ACEC	1,231	1,231	1,231	1,231	1,231
Elk Creek ACEC	784	0	784	0	784
Forest Peak RNA/ACEC	155	155	155	155	155
Grass Mountain RNA/ACEC	930	930	930	930	930
Hunter/Church Creek Area	0	2,267	2,267	2,267	2,267
High Peak – Moon Creek RNA/ACEC	1,490	1,490	1,490	1,490	1,490
Jackson Bend ACEC <sup>b</sup>	0	15	15	15	15
Larch Mountain EEA	183	0	0	0	0
Little Grass Valley ACEC	80	0	0	0	0
Little North Fork Wilson River ACEC	0	1,822	1,745	1,822	1,745
Little Sink RNA/ACEC	81	81	81	81	81
Lost Prairie ACEC	61	61	61	61	61
Lower Scappoose Eagle	0	179	0	0	0
Middle Santiam Terrace ACEC	108	182	182	182	182
Mill Creek Ridge ACEC	0	114	114	0	114
Miscellaneous Recreation Sites (Alter Glen, Dove Creek, and Fan Creek)	7	0	0	0	0
Molalla Meadows ACEC	0	197	197	197	197
Molalla River Non-Motorized Trail System	3,132	2,692	2,692	2,692	2,692
Mt. Hood Corridor and Bull Run Watershed Management Unit	0	2,660	2,660	2,660	2,660
North Santiam ACEC	15	0	0	0	0
Pacific City	75	75	75	75	75
Progeny Test Sites	211	793	793	793	793
Raymond Creek Bald Eagle Roost Area	278	0	0	0	0
Rickreall Ridge ACEC	177	368	368	235	368
Saddlebag Mountain RNA/ACEC	153	300	300	300	300
Sandy River Gorge ONA/ACEC	392	8,423	8,393	8,487	8,393
Sheridan Peak ACEC	310	0	0	0	0
Silt Creek ACEC	0	110	107	123	107
Skunk Creek Elk Emphasis Areas	660	690	690	690	690
Soosap Meadows ACEC	343	343	0	0	177
Table Rock Wilderness	6,351	6,613	6,613	6,613	6,613
The Butte RNA/ACEC	40	40	40	40	40
Valley of the Giants ACEC	51	1,311	1,311	0	1,311



TABLE 2-29. (CONTINUED)

Closed (areas closed to off-highway vehicle use) <sup>a</sup>	No Action Alternative	Alternative 1	Alternative 2	Alternative 3	PRMP
Valsetz-Luckiamute CTMA Elk Emphasis Areas	0	1,981	1,981	1,981	1,981
Walker Flat ACEC	10	10	10	10	10
Waterloo ACEC	0	9	9	9	9
White Rock Fen ACEC	55	55	0	0	0
Willamette River Parcels	76	89	89	89	89
<b>Totals – Salem</b>	<b>17,439</b>	<b>39,372</b>	<b>39,469</b>	<b>37,314</b>	<b>39,646</b>
<b>Eugene District</b>					
Cannery Dune	36	40	40	40	40
Coburg Hills Relic Forest Island ACEC	855	0	0	0	0
Collard Dune	40	36	36	36	36
Cottage Grove Lake RFI ACEC	15	0	15	0	15
Cottage Grove Old Growth EEA	80	80	80	80	80
Cougar Mountain Yew Grove ACEC	90	0	0	0	8
Dorena Lake RFI ACEC	19	0	0	0	0
Dorena Prairie ACEC	8	8	8	8	8
Esmond Lake ACEC	0	0	41	36	85
Fox Hollow RNA/ACEC	159	159	159	159	159
Grassy Mountain ACEC	74	25	25	25	29
Heceta Sand Dunes ONA/ACEC	210	210	210	210	210
Horse Rock Ridge RNA/ACEC	378	378	378	378	378
Hult Marsh ACEC	177	112	107	107	177
Lorane Ponderosa Pine ACEC	105	26	18	18	26
McGowan Creek EEA	79	79	79	79	79
McGowan Meadow ACEC	0	38	33	33	38
Mohawk RNA/ACEC	290	290	290	290	290
Oak Basin Prairies ACEC	0	37	30	30	37
Row River Trail	171	171	171	171	171
Shotgun Creek SRMA	278	414	414	414	414
Upper Elk Meadows RNA/ACEC	217	217	217	217	217
Willamette Valley Prairie, Oak, and Pine ACEC	0	697	554	554	780
<b>Totals - Eugene</b>	<b>3,281</b>	<b>3,017</b>	<b>2,905</b>	<b>2,885</b>	<b>3,277</b>
<b>Roseburg District</b>					
Bear Gulch RNA/ACEC	351	351	351	351	351
Beatty Creek RNA/ACEC	864	864	864	864	864
Bushnell-Irwin Rocks RNA/ACEC	1,085	1,085	1,085	1,085	1,085
Callahan Meadows ACEC	0	82	82	82	82
Myrtle Island RNA/ACEC	19	19	19	19	19
North Myrtle Creek RNA/ACEC	453	453	453	453	453



**TABLE 2-29. (CONTINUED)**

Closed (areas closed to off-highway vehicle use) <sup>a</sup>	No Action Alternative	Alternative 1	Alternative 2	Alternative 3	PRMP
Miscellaneous Recreation Trails (North Umpqua, Rock Creek, Susan Creek, and Wolf Creek Falls)	19	19	19	19	19
Progeny Test Sites	729	0	0	0	0
Red Ponds RNA/ACEC	141	141	141	141	141
Tater Hill RNA/ACEC	303	303	303	303	303
<b>Totals - Roseburg</b>	<b>3,964</b>	<b>3,317</b>	<b>3,317</b>	<b>3,317</b>	<b>3,317</b>
<b>Coos Bay District</b>					
Cherry Creek RNA/ACEC & ISA	592	592	592	592	592
China Wall ACEC	302	302	302	296	302
Dean Creek Elk Viewing Area (portion)	1,084	1,084	1,084	1,084	1,084
Euphoria Ridge ACEC	0	0	0	0	239
New River ACEC (portion)	883	883	883	883	883
North Spit Snowy Plover Habitat Restoration Areas	68	68	68	68	68
Powers Environmental Education Area	69	69	69	69	69
Progeny Test Sites & Seed Orchards	565	565	565	565	565
Tioga Creek ACEC	42	42	42	0	42
<b>Totals – Coos Bay</b>	<b>3,605</b>	<b>3,605</b>	<b>3,605</b>	<b>3,557</b>	<b>3,844</b>
<b>Medford District</b>					
Brewer Spruce Wilderness Instant Study Area	1,705	1,705	1,705	1,705	1,705
Cobleigh Road ACEC	0	244	239	239	244
Dakubetube Wildland ACEC	0	1,530	1,539	1,520	1,530
East Fork Whiskey Creek ACEC	0	0	3,188	0	3,188
Eight Dollar Mountain EEA	43	43	43	43	43
French Flat ACEC	651	504	504	504	504
Grayback Glades RNA/ACEC	1,022	1,022	1,022	1,022	1,022
Holton Creek RNA/ACEC	421	421	421	421	421
Lost Lake RNA/ACEC	387	387	387	387	387
North Fork Silver Creek RNA/ACEC	499	499	499	499	499
Old Baldy RNA/ACEC	115	115	115	115	115
Oregon Gulch RNA/ACEC	1,051	1,051	1,051	1,051	1,051
Pacific Crest National Scenic Trail Corridor <sup>c</sup>	3,199	2,310	2,310	2,310	2,310
Peavine	12,659	12,659	12,659	12,659	12,659
Pickett Creek ACEC	0	32	32	32	32
Pilot Rock ACEC	544	0	0	0	0
Pipe Fork RNA/ACEC	516	516	516	516	516



TABLE 2-29. (CONTINUED)

Closed (areas closed to off-highway vehicle use) <sup>a</sup>	No Action Alternative	Alternative 1	Alternative 2	Alternative 3	PRMP
	(acres)				
Rogue Wild and Scenic River Corridor (wild and recreational sections)	15,951	11,502	11,502	11,502	11,502
Round Top Butte RNA/ACEC	605	605	605	605	605
Scotch Creek RNA/ACEC	1,799	1,799	1,799	1,799	1,799
Soda Mountain Wilderness Study Area	6,106	6,106	6,106	6,106	6,106
Sterling Mine Ditch	143	143	143	143	143
Table Mountain Winter Snow Play Area	11	11	11	11	11
Table Rocks ACEC/EEA	1,244	1,244	1,244	1,244	1,244
Waldo Takilma ACEC	0	1,760	1,760	1,760	1,760
West Illinois	363	363	363	363	363
Wetland areas, meadows and caves	880	880	880	880	880
Whiskey Creek Proposed ACEC	0	633	633	633	633
Wild Rogue Wilderness Area	8,971	8,971	8,971	8,971	8,971
Woodcock Bog RNA/ACEC	265	265	265	265	265
<b>Totals – Medford<sup>c</sup></b>	<b>59,150</b>	<b>57,320</b>	<b>60,512</b>	<b>57,305</b>	<b>60,508</b>
<b>Klamath Falls Resource Area (of the Lakeview District)</b>					
Clover Creek	27	27	27	27	27
Gerber Reservoir (Barnes Valley, Ben Hall, and Pitch Log creeks)	3,859	3,943	3,943	3,943	3,943
Klamath Hills Wildlife Area	1,636	1,636	1,636	1,636	1,636
Miller Creek ACEC	939	939	939	939	939
Old Baldy RNA/Pacific Crest National Scenic Trail	355	355	355	355	355
Spencer Creek	80	264	264	264	264
Willow Valley/Antelope Creek	582	582	582	582	582
Wood River Wetland ACEC	3,225	3,225	3,225	3,225	3,225
<b>Totals – Klamath Falls</b>	<b>10,703</b>	<b>10,971</b>	<b>10,971</b>	<b>10,971</b>	<b>10,971</b>
<b>Totals - All Districts</b>	<b>98,142</b>	<b>117,602</b>	<b>120,779</b>	<b>115,349</b>	<b>121,563</b>

<sup>a</sup>Only those areas carried forward under the selected alternative would be closed to off-highway vehicle use. For those not carried forward, off-highway vehicle use would be limited to designated roads and trails.

<sup>b</sup>Some of the areas of critical environmental concern (ACECs) vary by alternative.

<sup>c</sup>Acre totals for the Medford District include the Cascade-Siskiyou National Monument since it is located within the planning area. This national monument is managed under a separate resource management plan.



## Off-Highway Vehicle Emphasis Areas

**TABLE 2-30. DISTRICT-SPECIFIC OFF-HIGHWAY VEHICLE EMPHASIS AREAS**

Off-Highway Vehicle Emphasis Areas <sup>a</sup>	No Action Alternative	Alts. 1 & 3	Alt.2	PRMP
	(acres)			
<b>Salem District</b>				
Upper Nestucca	13,500	9,579	9,579	9,579
<b>Eugene District</b>				
Shotgun Creek	6,874	8,090	8,090	8,090
<b>Roseburg District</b>				
Hubbard Creek	12,041	12,041	12,041	12,041
<b>Coos Bay District</b>				
Blue Ridge	-- <sup>b</sup>	1,609	1,609	1,609
<b>Medford District</b>				
Anderson Butte	--	--	11,742	11,482
Coyote Creek	--	--	14,597	14,585
East Howard	--	--	6,812	--
Elderberry Flats	--	--	3,393	3,393
Elliot Creek	--	--	3,931	3,931
Ferris Gulch	2,200	--	2,222	--
Illinois Valley	--	--	4,681	--
Lake Creek	--	--	8,561	--
Quartz Creek	7,120	--	6,867	8,727
Salt Creek	--	--	4,692	--
Spencer Creek	--	--	7,468	11,912
Timber Mountain/Johns Peak	16,250	--	16,375	13,919
Worthington Road/Obenchain	--	--	9,410	--
<b>Total Acres - Medford</b>	<b>25,570</b>	<b>--</b>	<b>100,751</b>	<b>67,949</b>
<b>Klamath Falls Resource Area (of the Lakeview District)</b>				
No off-highway vehicle emphasis areas.				
<b>Total Acres - All Districts</b>	<b>57,985</b>	<b>31,319</b>	<b>132,070</b>	<b>99,268</b>

<sup>a</sup>See Map 2-25 for the locations of these OHV emphasis areas.

<sup>b</sup>Two dashes (--) denote that a designated or potential site, trail, area, or byway either was not identified under the No Action Alternative, or would not be carried forward under the action alternatives or PRMP.



## Potential Off-Highway Vehicle Emphasis Areas

**TABLE 2-31. DISTRICT-SPECIFIC POTENTIAL OFF-HIGHWAY VEHICLE EMPHASIS AREAS**

Potential Off-Highway Vehicle Emphasis Areas	No Action Alternative	Alternatives 1, 2, 3, and PRMP
	(acres)	
<b>Salem District</b>		
Crooked Finger	-- <sup>a</sup>	454
Flat Mountain	--	6,892
Tillamook	6,852	--
<b>Eugene, Roseburg, Coos Bay, and Medford Districts; Klamath Falls Resource Area</b>		
No potential off-highway vehicle emphasis areas.		
<b>Total Acres – All Districts</b>	<b>6,852</b>	<b>7,346</b>

<sup>a</sup>Two dashes (--) denote that a designated or potential site, trail, area, or byway either was not identified under the No Action Alternative, or would not be carried forward under the action alternatives.

## Oregon State Scenic Waterways

**TABLE 2-32. DISTRICT-SPECIFIC OREGON STATE SCENIC WATERWAYS**

State Scenic Waterways	Segment Description	Total Miles
<b>Salem District<sup>a</sup></b>		
Clackamas River	<i>Recreational segment:</i> Olallie Lake Scenic Area boundary to North Fork Reservoir	54
	<i>Recreational segment:</i> River Mill Dam to Baker's Bridge at Carver	12
Nestucca River	<i>Recreational segment:</i> McGuire Dam to the confluence with Ginger Creek	23
	<i>Scenic segment:</i> Ginger Creek to East Creek near Blaine	
North Fork Clackamas River	<i>Scenic segment:</i> From source to North Fork Reservoir	12
Sandy River	<i>Natural segment:</i> Dodge Park (Bull Run River) to Indian John Island	12.5
	<i>Scenic segment:</i> Indian John Island to Dabney Park	
South Fork Clackamas River	<i>Scenic segment:</i> River mile four to confluence with mainstem of Clackamas River	4
Walker Creek	<i>Recreational segment:</i> Source to confluence with Nestucca River	3
<b>Eugene District</b>		
No Oregon State scenic waterways.		
<b>Roseburg District</b>		
North Umpqua River	<i>Recreational segment:</i> Soda Springs Dam to Rock Creek	34
<b>Coos Bay District</b>		
No Oregon State scenic waterways.		
<b>Medford District</b>		
Rogue River	<i>Recreational segment:</i> Confluence of the Applegate to Grave Creek	27
	<i>Natural segment:</i> Grave Creek to the USFS boundary	20
<b>Klamath Falls Resource Area (of the Lakeview District)</b>		
Klamath River <sup>b</sup>	<i>Scenic segment:</i> J. C. Boyle Powerhouse to the Oregon/California state line	11
<b>Total Miles – All Districts</b>		<b>192.5</b>

<sup>a</sup>The river segments of the Clackamas, Nestucca, and Sandy Rivers listed on this table have joint state and federal management plans in place.

<sup>b</sup>This Klamath River segment has a cooperative management agreement between the Oregon Parks and Recreation Department and the BLM.





# National Landscape Conservation System Designated Lands

## Wild and Scenic Rivers

### Designated Wild and Scenic Rivers and River Segments

**TABLE 2-33. DISTRICT-SPECIFIC DESIGNATED WILD AND SCENIC RIVERS AND RIVER SEGMENTS**

Designated Rivers/ River Segments	Classification	Outstandingly Remarkable Values	Total Miles <sup>a</sup>	Acres <sup>b</sup> (BLM lands only)
<b>Salem District</b>				
Clackamas (Segment 6)	Recreational	Fish, Recreation	1	143
Elkhorn Creek (Segment 1)	Wild	Scenery, Wildlife	5.8	142
Elkhorn Creek (Segment 2)	Scenic	Scenery, Wildlife	0.6	225
Quartzville Creek	Recreational	Recreation, Scenery	9.7	2,083
Salmon River (Segment 4)	Recreational	Botany, Ecology, Fish, Hydrology, Recreation, Scenery, Wildlife	3.2	0
Salmon River (Segment 5)	Scenic	Botany, Ecology, Fish, Hydrology, Recreation, Scenery, Wildlife	4.8	728
Sandy River (Segment 1)	Scenic	Cultural, Fish, Recreation	3.8	445
Sandy River (Segment 2)	Recreational	Cultural, Fish, Recreation, Scenery	8.7	279
<b>Totals – Salem</b>			<b>37.6</b>	<b>4,045</b>
<b>Eugene District</b>				
No designated wild and scenic rivers or river segments.				
<b>Roseburg District</b>				
North Umpqua River	Recreational	Cultural, Fish, Hydrology, Recreation, Scenery	8.4	2,142
<b>Totals – Roseburg</b>			<b>8.4</b>	<b>2,142</b>
<b>Coos Bay District</b>				
No designated wild and scenic rivers or river segments.				
<b>Medford District</b>				
Rogue River (Applegate River to Grave Creek)	Recreational	Fish, Recreation, Scenery	27	4,911
Rogue River (Grave Creek to Mule Creek)	Wild	Fish, Recreation, Scenery	20	6,602
<b>Totals – Medford</b>			<b>47</b>	<b>11,513</b>
<b>Klamath Falls Resource Area (of the Lakeview District)</b>				
Upper Klamath River	Scenic	Fish, History, Prehistory, Recreation, Scenery, Wildlife	11	2,780
<b>Totals – Klamath Falls</b>			<b>11</b>	<b>2,780</b>
<b>Totals – All Districts</b>			<b>104</b>	<b>20,480</b>

<sup>a</sup>Mileage calculations include both BLM-administered and non-BLM-administered lands.

<sup>b</sup>Acres calculations are for BLM-administered lands only and based on the amount of BLM-administered lands within a 0.05-mile-wide river corridor.



## Suitable Wild and Scenic Rivers and River Segments

**TABLE 2-34. DISTRICT-SPECIFIC SUITABLE WILD AND SCENIC RIVERS AND RIVER SEGMENTS**

Suitable Rivers/River Segments	Potential Classification	Outstandingly Remarkable Values	Total Miles <sup>a</sup>	Acres <sup>b</sup> (BLM lands only)
<b>Salem District</b>				
Molalla River (Segment B)	Recreational	Geology, Recreation, Scenery	13.2	2,988
Nestucca River (Segment A)	Recreational	Fish, Recreation, Scenery, Wildlife	15.5	3,016
<b>Totals – Salem</b>			<b>28.7</b>	<b>6,004</b>
<b>Eugene District</b>				
McKenzie River (Segment A)	Recreational	Fish, Recreation, Scenery	11	962
Siuslaw River (Segment B)	Recreational	Fish, Wildlife	46	4,518
Siuslaw River (Segment C)	Recreational	Recreation, Wildlife	13	1,211
<b>Totals – Eugene</b>			<b>70</b>	<b>6,691</b>
<b>Roseburg District</b>				
No suitable wild and scenic rivers or river segments.				
<b>Coos Bay District</b>				
No suitable wild and scenic rivers or river segments.				
<b>Medford District</b>				
Big Windy Creek	Wild	Recreation, Scenery	6.8	1,928
Dulog Creek	Wild	Recreation, Scenery	1.8	480
East Fork Big Windy Creek	Wild	Recreation, Scenery	3.6	923
Howard Creek	Wild	Fish, Recreation, Scenery	7.0	1,752
<b>Totals – Medford</b>			<b>19.2</b>	<b>5,083</b>
<b>Klamath Falls Resource Area (of the Lakeview District)</b>				
No suitable wild and scenic rivers or river segments.				
<b>Totals – All Districts</b>			<b>117.9</b>	<b>17,778</b>

<sup>a</sup>Mileage calculations include both BLM-administered and non-BLM-administered lands.

<sup>b</sup>Acres calculations are for BLM-administered lands only and based on the amount of BLM-administered lands that are located within a half mile wide river corridor.



## Eligible Wild and Scenic Rivers and River Segments

**TABLE 2-35. DISTRICT-SPECIFIC ELIGIBLE WILD AND SCENIC RIVERS AND RIVER SEGMENTS**

Eligible	Potential Classification	Outstandingly Remarkable Values	Total Miles <sup>a</sup>	Acres <sup>b</sup> (BLM lands only)
<b>Salem District</b>				
Alsea River	Recreational	Fish, Recreation	16.5	312
Clackamas River	Recreational	Recreation, Scenery	15.4	44
Drift Creek (Segments A and B)	Recreational	Fish	30.1	112
Fall Creek	Recreational	Fish	11.7	642
Kilchis River	Recreational	Fish, Recreation, Wildlife	14.6	56
Little Luckiamute River	Recreational	Ecology	27.1	40
Little North Santiam River	Recreational	Fish, Recreation, Scenery	17.2	1,203
Lobster Creek (Segment B)	Recreational	Fish	16.6	305
Luckiamute River	Recreational	Ecology	61.2	553
Middle Santiam River	Recreational	Cultural, Ecology	7.9	175
Nehalem River	Recreational	Recreation, Fish and Wildlife	122.0	36
Nestucca River (Segment B)	Recreational	Fish, Recreation, Scenery, Wildlife	8.0	216
North Fork Clackamas River	Scenic	Fish	14.4	358
North Fork Siletz River	Scenic	Ecology, Fish, Wildlife	10.6	826
North Fork Trask River	Recreational	Fish, Scenic	11.9	732
North Santiam River (Segment A)	Scenic	Fish, Recreation, Scenery	19.1	217
North Santiam River (Segment B)	Recreational	Fish, Recreation	27.9	132
Sandy River (Segment A)	Recreational	Cultural, Fish, Recreation	15.0	627
Sandy River (Segment B)	Recreational	Cultural, Fish, Recreation, Scenery	11.8	872
Siletz River	Recreational	Fish, Recreation, Scenery	68.8	38
South Fork Trask River	Recreational	Fish, Wildlife	9.3	30
South Yamhill River	Recreational	Cultural, Ecology	62.5	0
Table Rock Fork Molalla River	Recreational	Cultural	13.4	1,385
Trask River	Recreational	Fish, Recreation, Wildlife	19.5	333
Tualatin River	Recreational	Cultural	80.6	312
Willamette River	Recreational	Cultural, Ecology, Fish, Recreation, Wildlife	164.4	88
Wilson River	Recreational	Fish, Recreation, Wildlife	29.8	79
Yaquina River	Recreational	Fish	44.6	238
<b>Totals – Salem</b>			<b>951.9</b>	<b>9,970</b>
<b>Eugene District</b>				
Fall Creek	Recreational	Recreation	6.0	1,126
Lake Creek (Segment B)	Recreational	Fish, Recreation	18.3	482
McKenzie River (Segment B)	Recreational	Fish, Recreation, Scenery, Wildlife	40.0	55
Nelson Creek	Recreational	Fish	7.0	542
North Fork Gate Creek	Recreational	Fish	7.9	201
South Fork Gate Creek	Recreational	Fish	8.9	106
<b>Totals - Eugene</b>			<b>88.1</b>	<b>2,512</b>



TABLE 2-35. (CONTINUED)

Eligible	Potential Classification	Outstandingly Remarkable Values	Total Miles <sup>a</sup>	Acres <sup>b</sup> (BLM lands only)
<b>Roseburg District</b>				
Cow Creek (West Fork to South Umpqua)	Recreational	Cultural, Fish, History, Wildlife	26	744
South Umpqua (Tiller to North Umpqua)	Recreational	Cultural, Fish, History, Wildlife	73	746
Umpqua (River Forks to Elkton)	Recreational	Cultural, Fish, History, Recreation, Scenery	57	1,891
<b>Totals - Roseburg</b>			<b>156</b>	<b>3,381</b>
<b>Coos Bay District</b>				
Sixes	Recreational	Fish, History	28	271
South Fork Coos	Recreational	Fish, Recreation	37	503
South Fork Coquille	Recreational	Fish, Prehistory	35	139
Umpqua (Mouth to Kellogg)	Recreational	Ecology, Fish, Geology, History, Prehistory, Recreation, Scenery	70	1,045
<b>Totals – Coos Bay</b>			<b>170</b>	<b>1,958</b>
<b>Medford District</b>				
Antelope Creek	Recreational	Fish	21	810
Applegate River	Recreational	Fish	53	860
Big Butte Creek (including the south fork of Big Butte Creek)	Recreational	Fish	12	770
Cheney Creek	Recreational	Fish	7	711
Cow Creek	Recreational	Fish	34	1,434
Elk Valley Creek	Recreational	Fish	6	509
Left Fork Foots Creek	Recreational	Fish	4	189
Little Applegate River	Recreational	Fish	23	1,369
Quines Creek	Recreational	Fish	7	816
Riffle Creek	Recreational	Fish	6	857
Rogue River (Segment 1)	Recreational	Fish, Recreation	11	30
Rogue River (Segment 2)	Recreational	Fish, Recreation	20	281
Rogue River (Segment 3)	Recreational	Fish, Recreation	31	489
Sams Creek	Recreational	Fish	8	541
South Fork Little Butte Creek	Recreational	Fish	25	446
West Fork Illinois River	Scenic	Scenery	17	1,173
<b>Totals – Medford</b>			<b>285</b>	<b>11,285</b>
<b>Klamath Falls Resource Area (of the Lakeview District)</b>				
No eligible wild and scenic rivers or river segments.				
<b>Totals – All Districts</b>			<b>1,651</b>	<b>29,106</b>

<sup>a</sup>Mileage calculations include both BLM-administered and non-BLM-administered lands.

<sup>b</sup>Acres calculations are for BLM-administered lands only and based on the amount of BLM-administered lands that are located within a half mile wide river corridor.



## Wilderness Areas

**TABLE 2-36. DISTRICT-SPECIFIC WILDERNESS AREAS**

Wilderness Areas	Administered by the BLM (acres)
<b>Salem District</b>	
Table Rock	5,706
Managed according to the 1987 <i>Table Rock Wilderness Management Plan</i> to preserve the area's undisturbed natural integrity.	
<b>Eugene, Roseburg, and Coos Bay Districts</b>	
No wilderness areas.	
<b>Medford District</b>	
Wild Rogue	8,971
This wilderness spans across both BLM and U. S. Forest Service (USFS) lands. Public Law 95-237 states that all BLM-administered lands within the Wild Rogue Wilderness shall be administered by the Secretary of Agriculture, and in this case, the USFS.	
<b>Klamath Falls Resource Area (of the Lakeview District)</b>	
No wilderness areas.	
<b>Total Acres – All Districts</b>	
<b>14,677</b>	

## Wilderness Study Areas and Wilderness Instant Study Areas

**TABLE 2-37. DISTRICT-SPECIFIC WILDERNESS STUDY AND WILDERNESS INSTANT STUDY AREAS**

Wilderness Study and Wilderness Instant Study Areas	Classification	Administered by the BLM (acres)
<b>Salem District</b>		
Little Sink	Instant Study	80
<b>Eugene District</b>		
No wilderness study or wilderness instant study areas.		
<b>Roseburg District</b>		
No wilderness study or wilderness instant study areas.		
<b>Coos Bay District</b>		
Cherry Creek/Douglas fir	Instant Study	570
<b>Medford District</b>		
Brewer Spruce	Instant Study	1,705
Soda Mountain <sup>a</sup>	Study	6,107
<b>Klamath Falls Resource Area</b>		
Mountain Lakes	Study	340
<b>Total - All Districts</b>		<b>8,802</b>

<sup>a</sup>Acre totals for the Medford District include the Cascade-Siskiyou National Monument since it is located within the planning area. This national monument is managed under a separate resource management plan.



## Miscellaneous National Landscape Conservation System and Congressionally Designated Lands

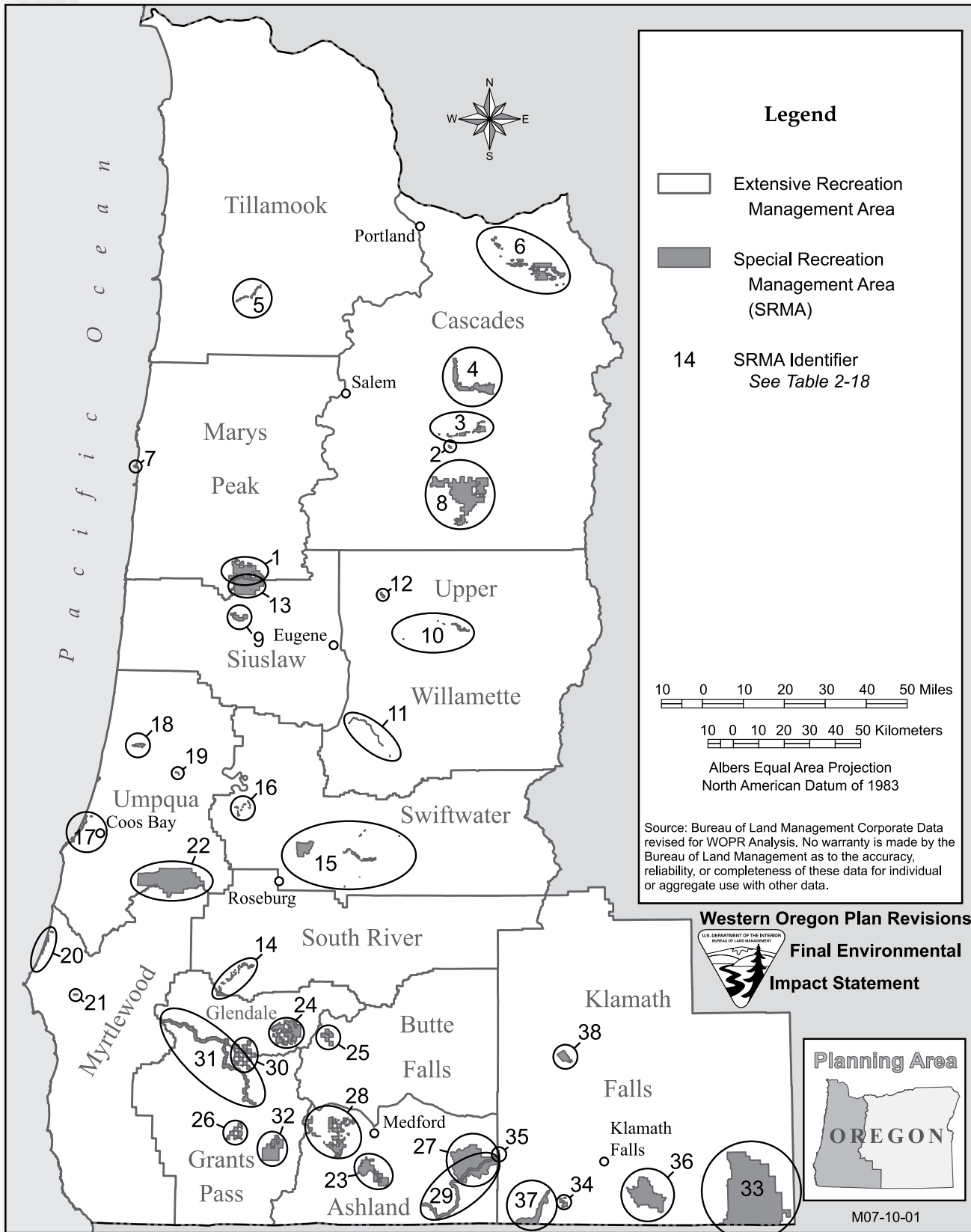
**TABLE 2-38. DISTRICT-SPECIFIC MISCELLANEOUS NATIONAL LANDSCAPE CONSERVATION SYSTEM AND CONGRESSIONALLY DESIGNATED LANDS**

Miscellaneous National Landscape Conservation System Designated Lands	Administered by the BLM	
	(acres)	(miles)
<b>Salem District</b>		
Bull Run Watershed Management Unit	658	
Mt. Hood Corridor	4,644	
Yaquina Head Outstanding Natural Area	102	
<b>Eugene, Roseburg, and Coos Bay Districts</b>		
None.		
<b>Medford District</b>		
Cascade-Siskiyou National Monument <sup>a</sup>	52,947	
Pacific Crest National Scenic Trail		40
<b>Klamath Falls Resource Area</b>		
Pacific Crest National Scenic Trail		1
<b>Total - All Districts</b>	<b>58,351</b>	<b>41</b>

<sup>a</sup>Acre totals for the Medford District include the Cascade-Siskiyou National Monument since it is located within the planning area. This national monument is managed under a separate resource management plan.

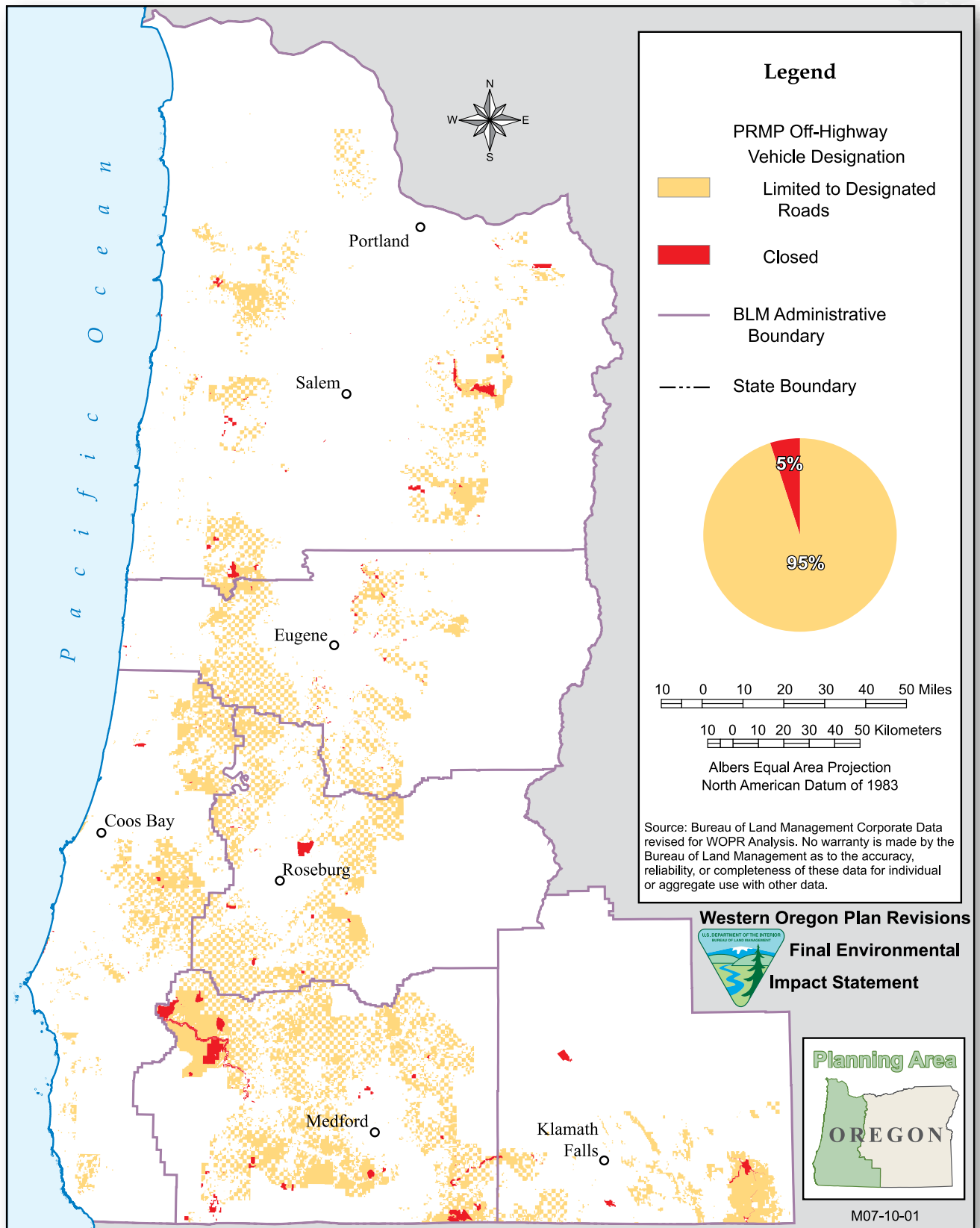


MAP 2-7. RECREATION MANAGEMENT AREAS





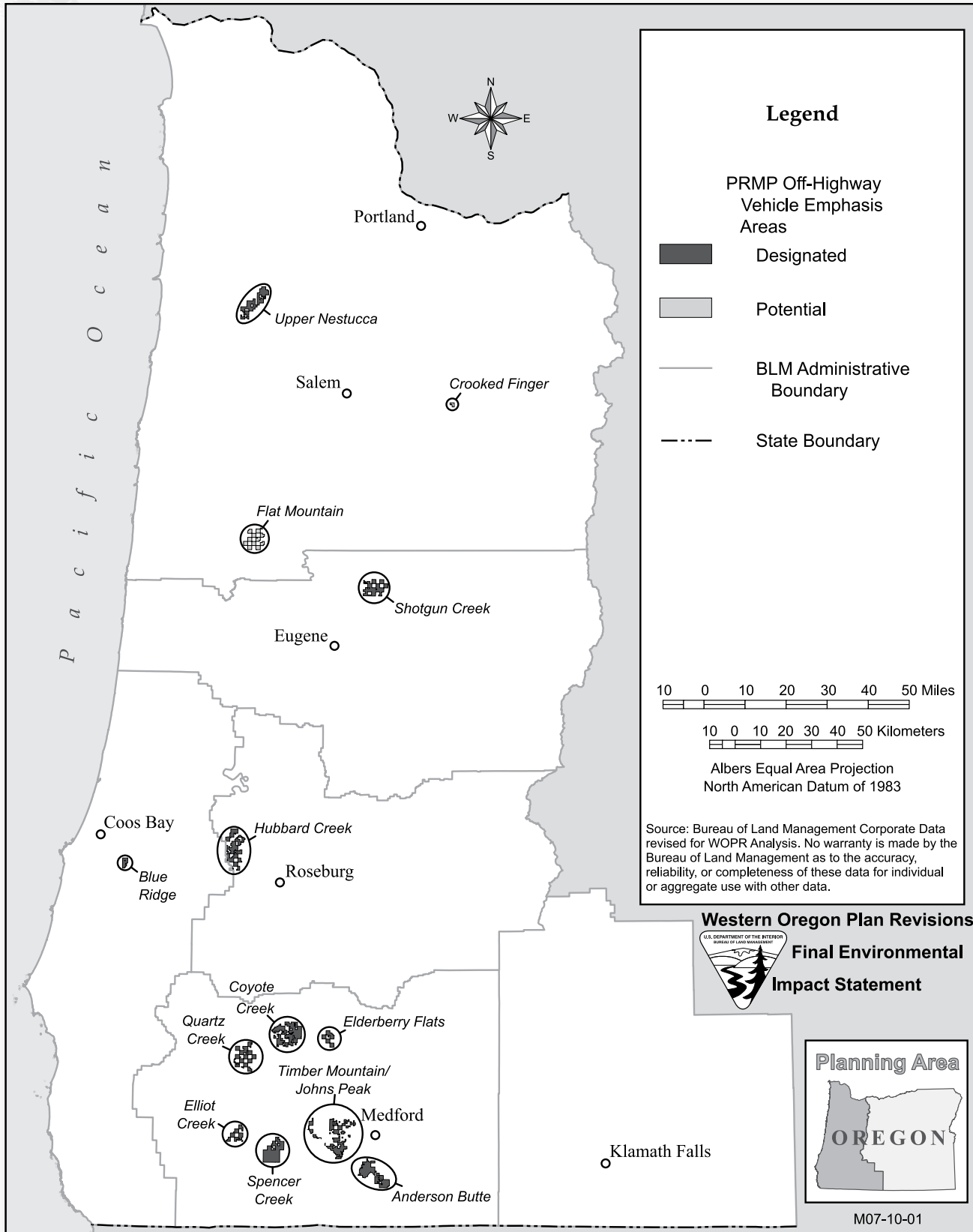
MAP 2-8. OFF-HIGHWAY VEHICLE DESIGNATIONS - PRMP





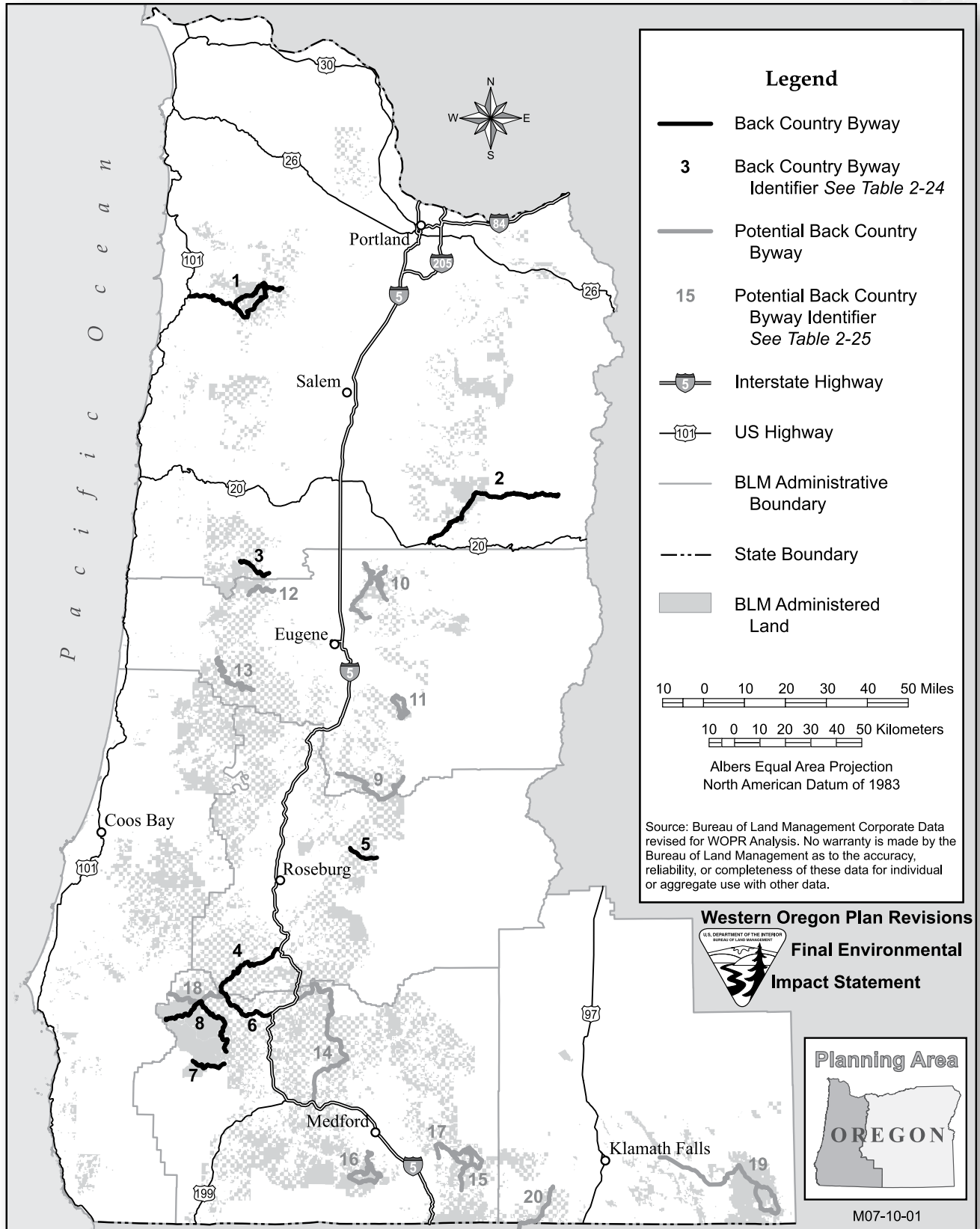


MAP 2-9. OFF-HIGHWAY VEHICLE EMPHASIS AREAS - PRMP



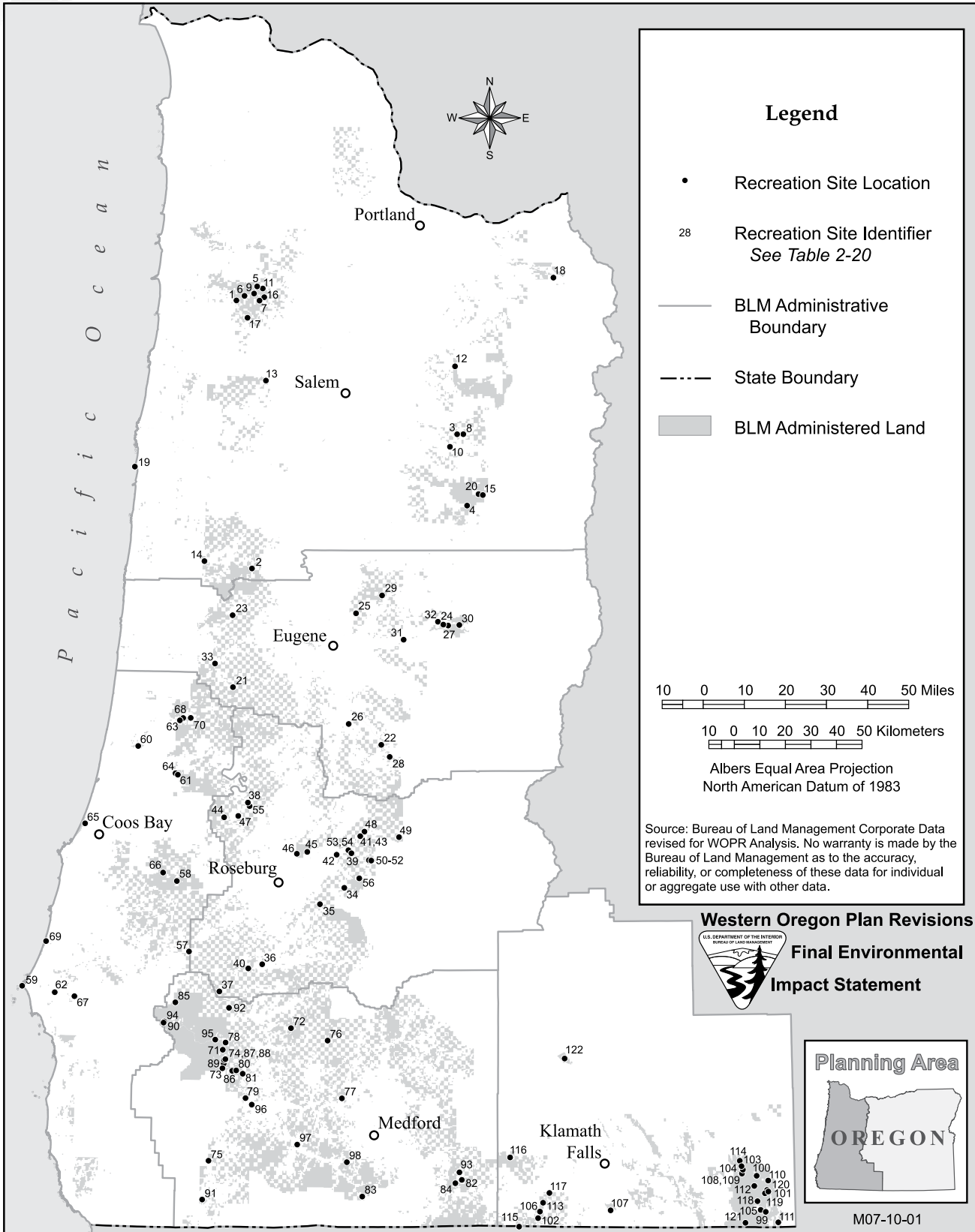


MAP 2-10. BACKCOUNTRY BYWAYS



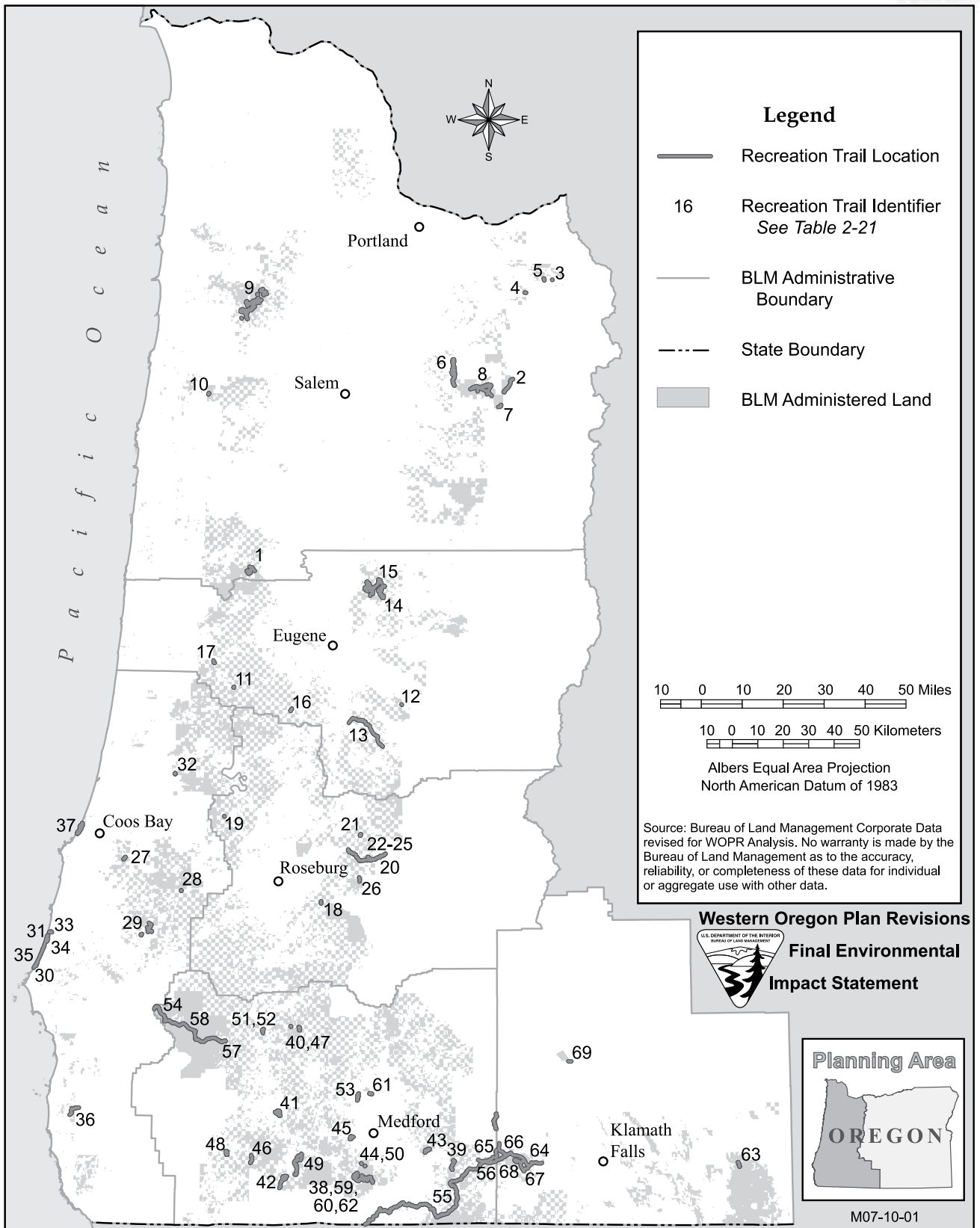


MAP 2-11. DESIGNATED RECREATION SITES



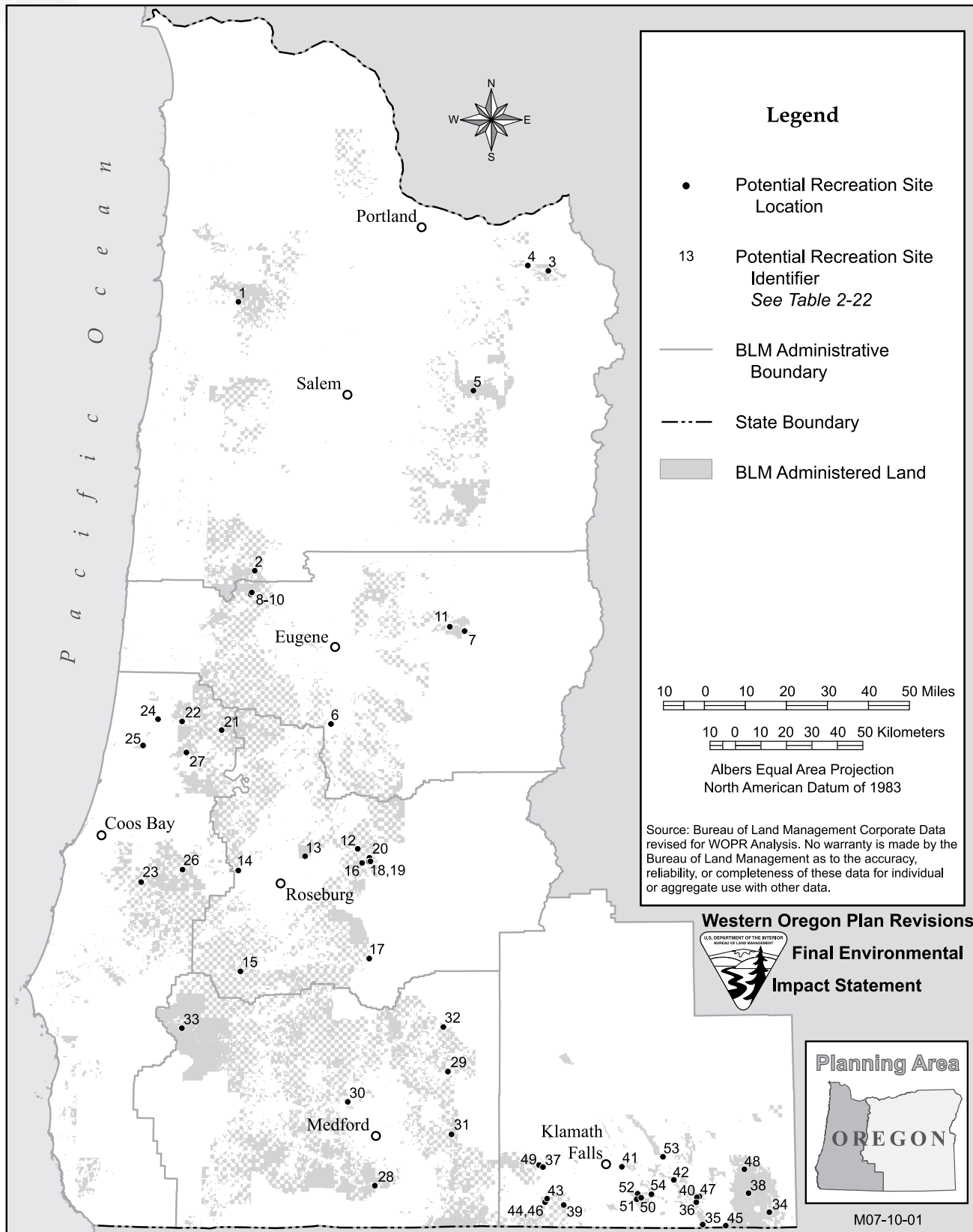


MAP 2-12. DESIGNATED RECREATION TRAILS



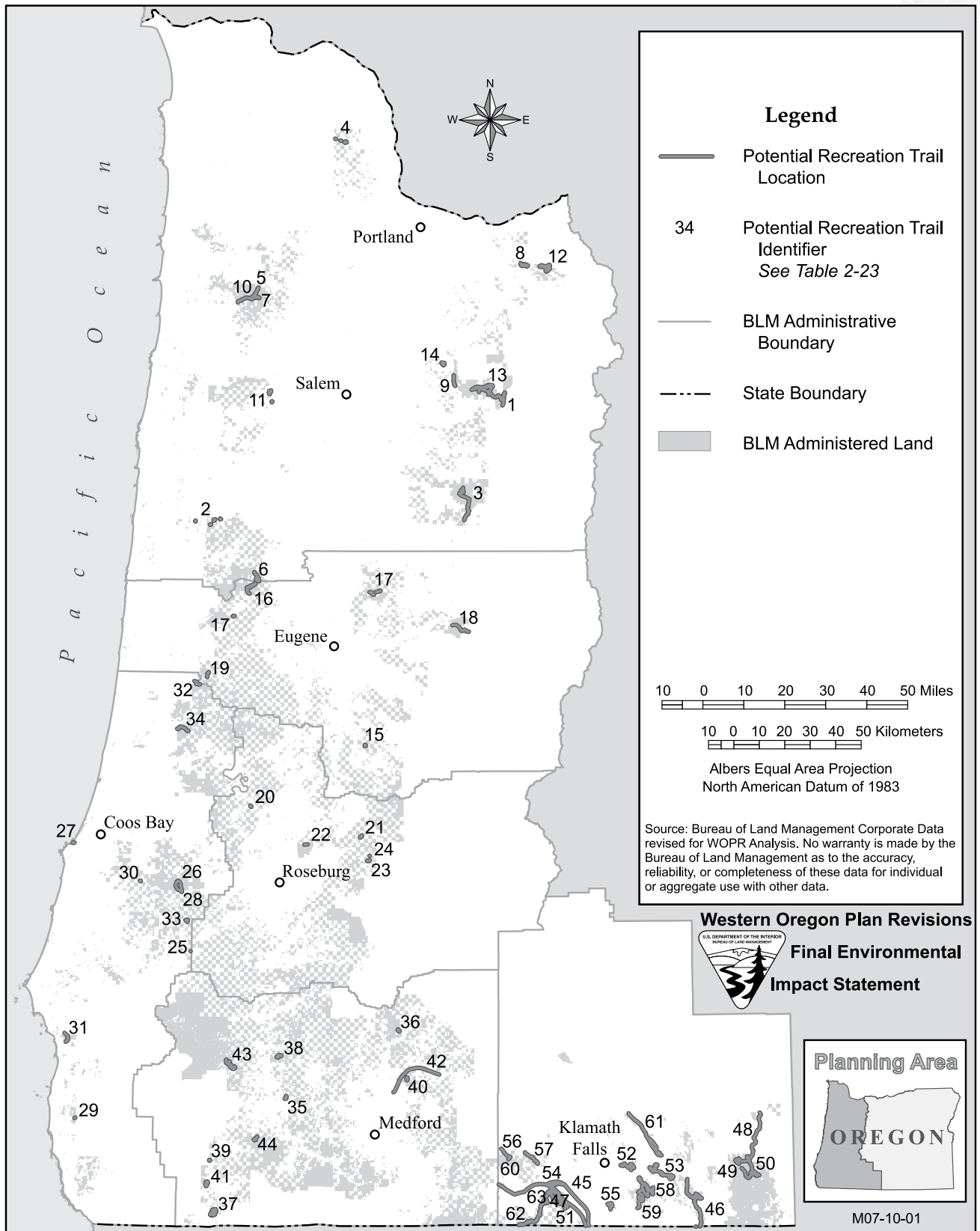


MAP 2-13. POTENTIAL RECREATION SITES





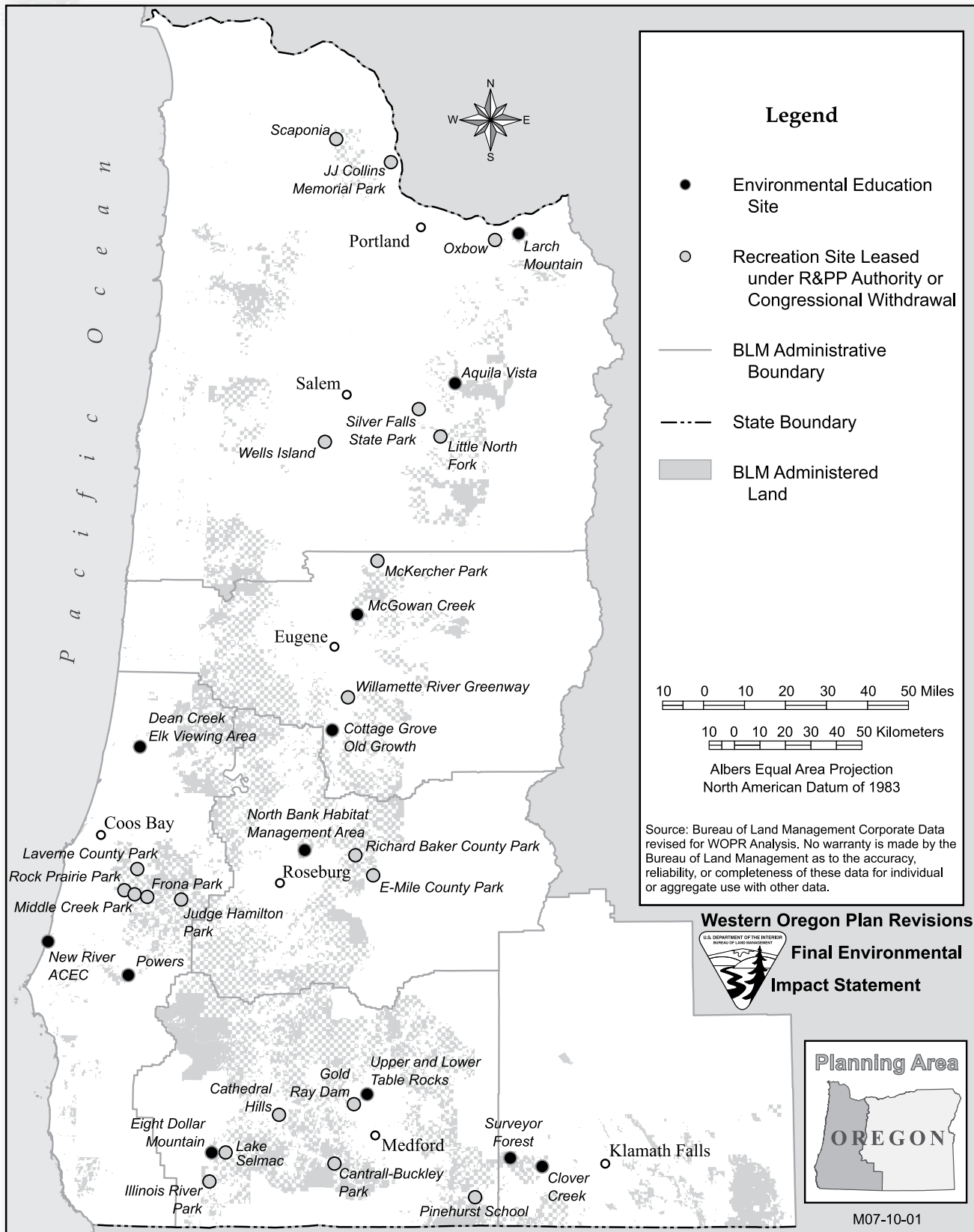
MAP 2-14. POTENTIAL RECREATION TRAILS





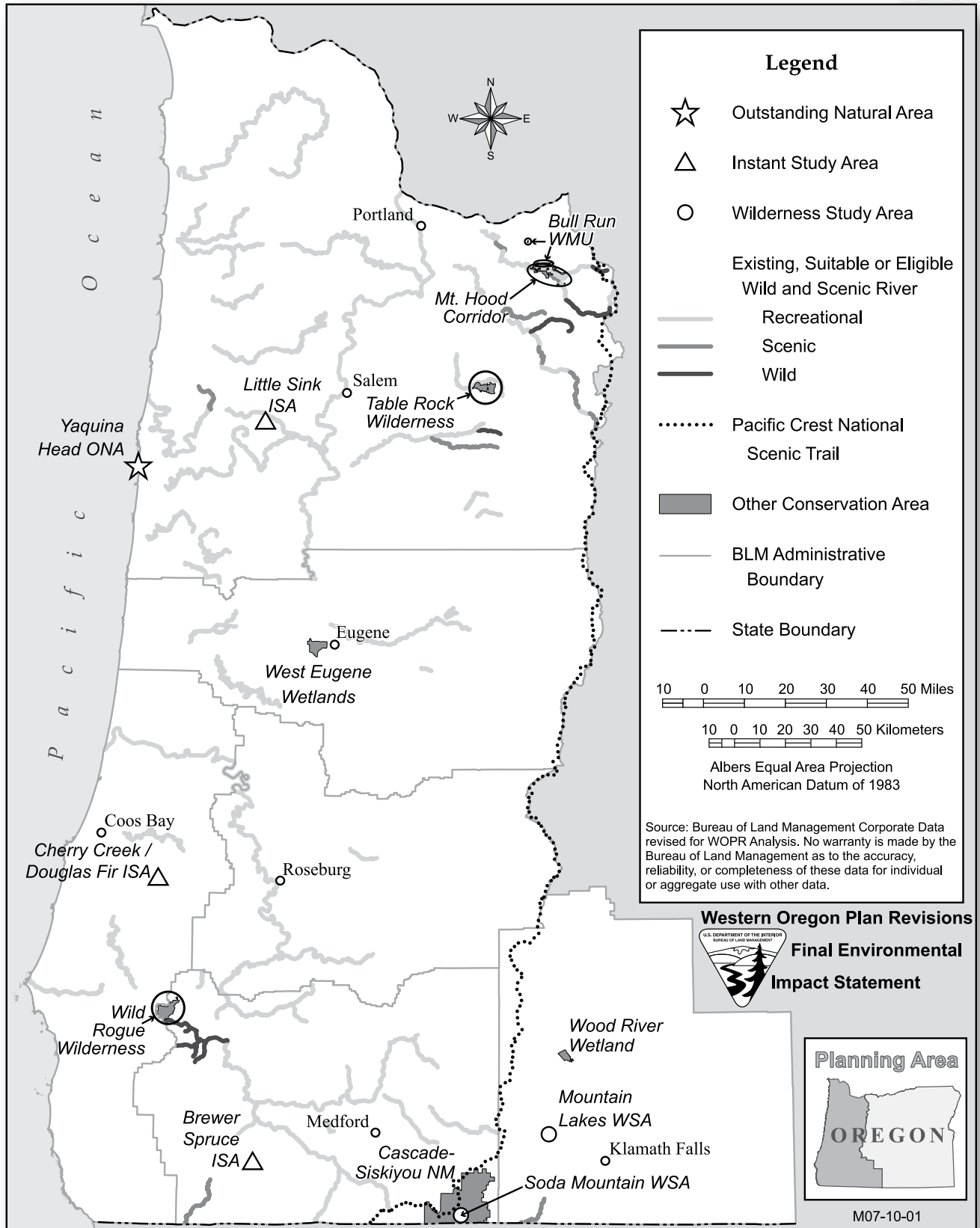


MAP 2-15. ENVIRONMENTAL EDUCATION SITES AND RECREATION SITES LEASED UNDER RECREATIONAL & PUBLIC PURPOSE AUTHORITY OR CONGRESSIONAL WITHDRAWAL





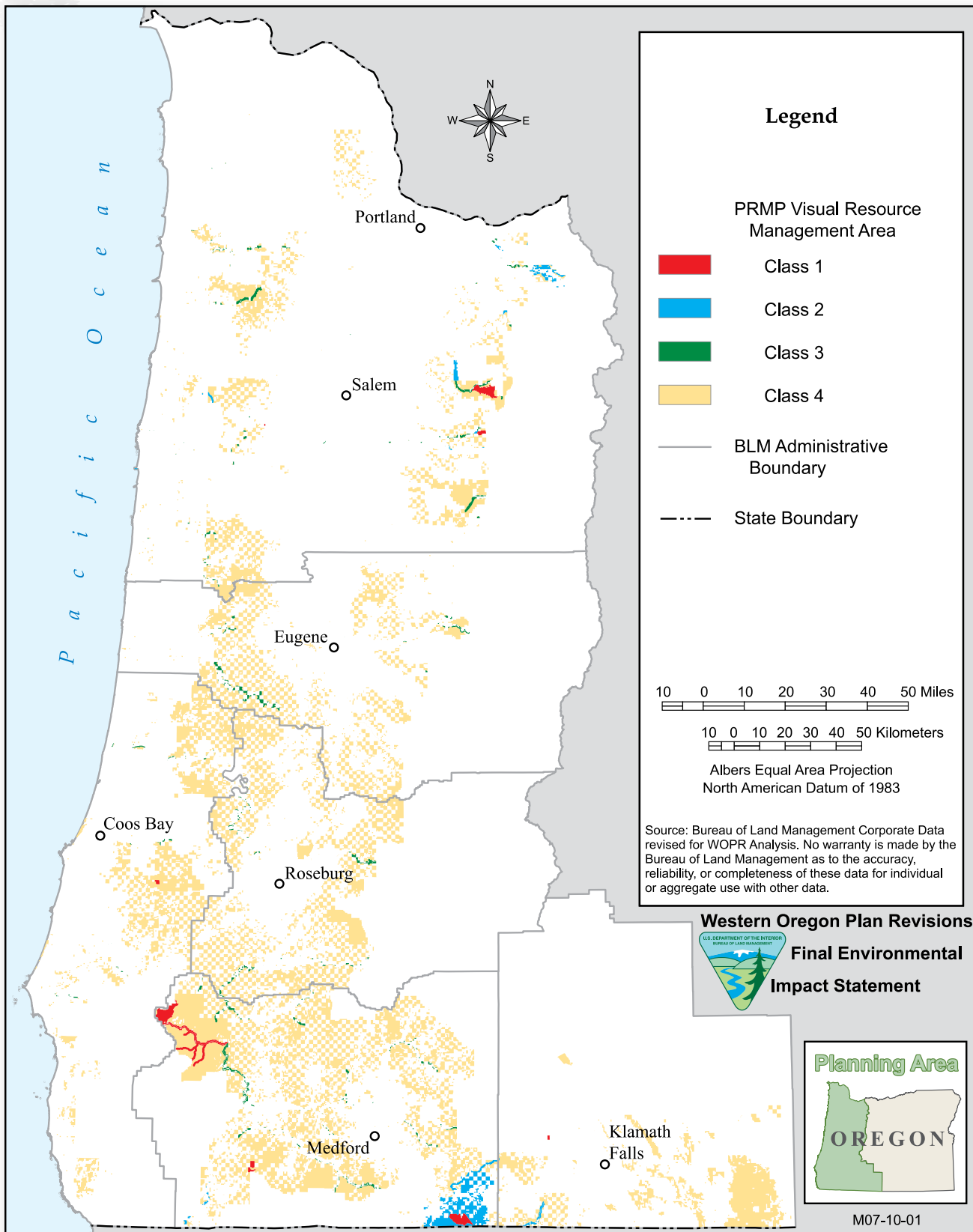
MAP 2-16. NATIONAL LANDSCAPE CONSERVATION SYSTEM DESIGNATED LANDS







MAP 2-17. VISUAL RESOURCE MANAGEMENT AREAS - PRMP





MAP 2-18. BALD EAGLE, DEER AND ELK HABITAT MANAGEMENT AREAS - PRMP

