



# WASHINGTON

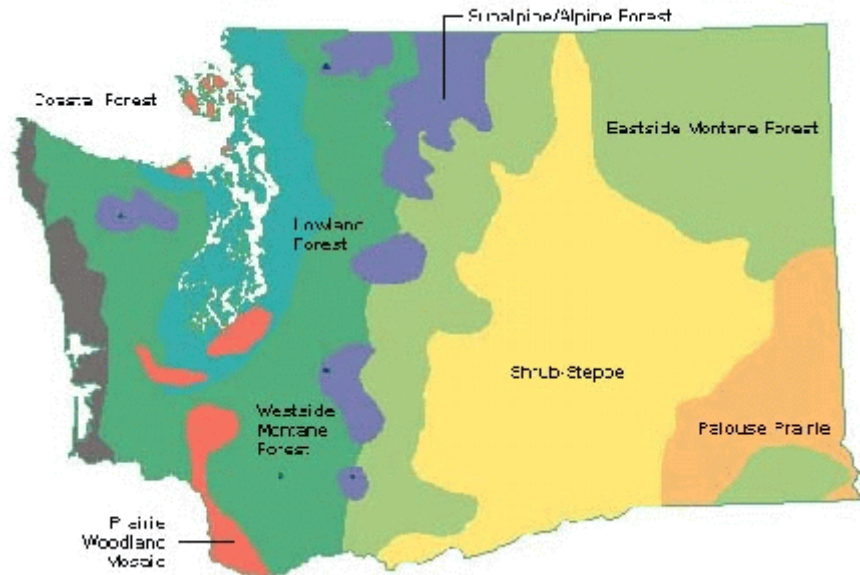
## Introduction and General Description

Washington State has several natural regions defined by their climate, elevation, and geology. These include: forests, shrub-steppe grasslands, freshwater systems, and marine systems. Over thousands of years, fish and wildlife species have evolved and adapted to this array of ecosystems. Forests cover about half of the State, and our soils and climate make Washington one of the few areas in the nation capable of rapidly growing high-quality timber.

Divided by the Cascade Mountain range, the State has two climates.

**Western Washington** - The rainfall in western Washington ranges from about 20 inches per year to more than 200 inches. The marine systems of the Pacific Ocean, Puget Sound and the strait of Juan de Fuca significantly influence the climate and the plants and animals found in western Washington. These habitats include the temperate rainforests of the Olympic Peninsula and mosaics of prairie with scattered oak woodlands.

**Eastern Washington** - Eastern Washington receives between 5 and 55 inches of rainfall, and its varied ecosystems are linked together by the vast Columbia and Snake rivers. About two-thirds of



Source: GAP Analysis, University of Washington, 1997.

eastern Washington was once comprised of shrub-steppe or grassland prairie.

our marine and freshwater ecosystems. Much of the shrub-steppe and grassland prairies in eastern Washington have been converted to agricultural and grazing uses.

## Habitats of Special Concern

Current habitats of special concern include: streams and riparian (streamside) areas, wetlands, prairies, oak woodlands and shrub-steppe. Wildlife species of concern include bull trout (federally threatened), salmon, cutthroat trout, bald eagle, black tern, Columbia spotted frog and pygmy rabbit. Plant species of concern include the federally listed golden paintbrush and water howellia.

## Conservation Strategies

### Riparian, Wetland and Stream Restoration

The Partners for Fish and Wildlife Program in Washington works with willing landowners, land managers and a variety of partners to restore habitat for the Pacific Northwest's imperiled bull trout, salmon, steelhead, native trout stocks and a host of terrestrial wildlife species. We emphasize restoration projects that help restore overall watershed health for the long-term, and benefit a diverse array of fish and wildlife species. For example, the Partners Program contributed funding and technical assistance to restore a

## Threats

Population growth, economic development and other environmental alterations will continue to put great pressure on

---

perpetual easement encompassing more than 300 acres of riparian, wetland and upland habitat in Grays Harbor County. The project benefitted bald eagle, bull trout, steelhead, cutthroat, coho and chum salmon, and other migratory and resident fish and wildlife species.

For stream, wetland and riparian habitat restoration across the State, costs vary widely due to the large variety of project types in these habitats. The average cost is \$8,000 per acre for these different habitat types.

### ***Prairie, Oak Woodland and Shrub-Steppe Restoration***

We are also partnering with several Federal and State agencies and local organizations to shrub-steppe and prairie/oak woodland habitat.

In western Washington it costs about \$2,500 per acre to restore prairie/oak woodland and about \$1,000 per acre to restore shrub-steppe Palouse prairie in eastern Washington.



**50-acre channeled scrubland in Spokane County with restored hydrology.**

---

## **Partners**

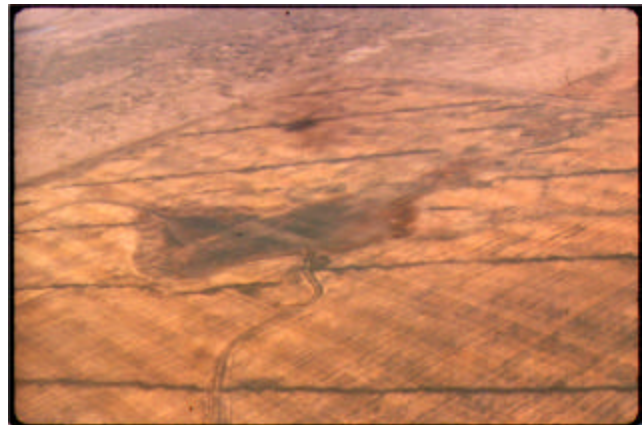
Natural Resources Conservation Service  
National Marine Fisheries Service  
U.S. Army Corps of Engineers  
Washington Department of Fish and Wildlife  
Conservation Districts  
Confederated Tribes of the Umatilla Indian  
Reservation  
Ducks Unlimited  
The Nature Conservancy  
Washington State University  
Columbia National Wildlife Refuge  
Nisqually National Wildlife Refuge  
Turnbull National Wildlife Refuge  
Willapa National Wildlife Refuge

---

## **Accomplishments**

The Partners Program was initiated in western Washington in Fiscal Year 1998, and in eastern Washington in Fiscal Year 1999. The Partners Program has focused on restoring habitat for threatened and endangered animal and plant species, and other migratory and resident fish and wildlife species. Special attention has been given to forming partnerships on lands with permanent easements. To date, we have restored:

- 186 acres of wetland
- 12 miles of riparian habitat
- 2 miles of in-stream habitat



**Aerial view of restored native grassland and wetland complex in Lincoln County.**

- 30 acres of native grassland
- 48 acres of other Federal trust species habitat
- Additionally, anadromous fish passage has been restored to 15 stream miles.

### Future Needs

- Restore 12,000 acres of stream, riparian, and wetland habitats.
- Restore 1,500 acres of prairie/oak woodlands.
- Restore 2,000 acres of shrub-steppe/Palouse prairie.



Reconstructed salmon spawning channel in Skamania County, Washington.

---

## **CONTACT**



### Western Washington

**Paco Rodriguez**  
U.S. Fish and Wildlife Service  
510 Desmond Drive, Suite 102  
Lacey, WA 98503-1273  
360 753-9440 (Fax) 360 753-9008  
e-mail: [Julio\\_Rodriguez@fws.gov](mailto:Julio_Rodriguez@fws.gov)

### Eastern Washington

**Kathleen Fulmer**  
U.S. Fish and Wildlife Service  
11103 East Montgomery #2  
Spokane, WA 99206  
509 891-6839 (Fax) 509 891-6748

September 2001