

Carter's Landing

Carter's Landing is alongside Oxbow Reservoir, which is the smallest reservoir between Hells Canyon Reservoir and Brownlee Reservoir. The Oxbow got its name from the early settlers who thought it resembled the U-shaped collar around an ox's neck.



Carter's Landing offers a great place to take the family for a weekend of fun and relaxation. With all the shade trees and easy water access, it is just a fun place to go.

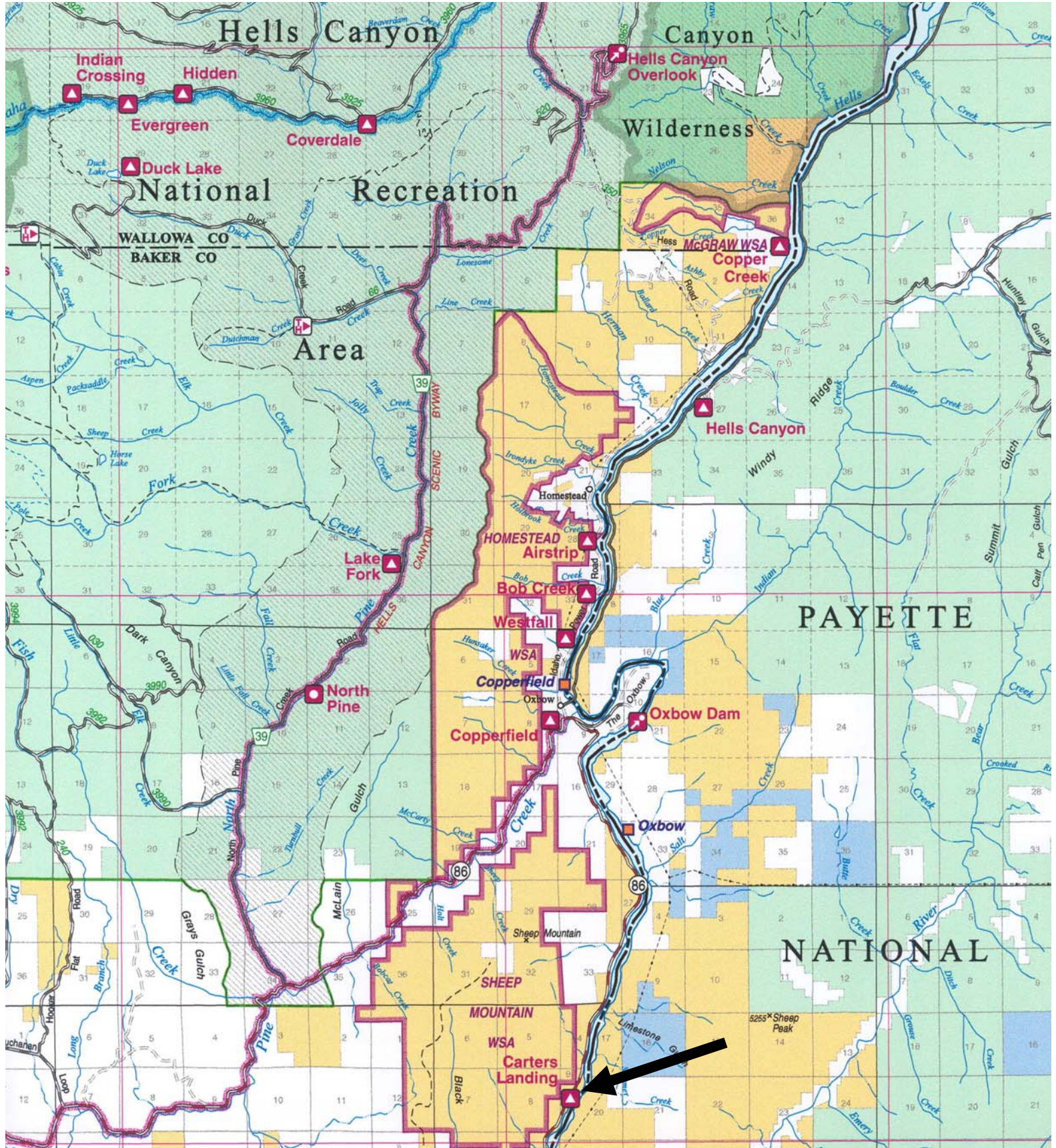
Activities:     

Facilities: The camping/day-use area provides a vault toilet, shade trees, picnic tables, fire rings, garbage pick up, and an unimproved boat launch.

Fees: \$3 per night for RVs, \$2 per night for tents.

Season: Open year-round.

Other: The nearest launch for larger boats is upstream at Oxbow Boat Launch.



Hells Canyon

Canyon

National Recreation Area

WALLOWA CO
BAKER CO

Wilderness

Area

McGRAW WSA
Copper Creek

Hells Canyon

PAYETTE

HOMESTEAD Airstrip

Bob Creek

Westfall

WSA
Copperfield

Copperfield

Oxbow Dam

Oxbow

NATIONAL

SHEEP MOUNTAIN

WSA
Carters Landing

