




MAPS



SCALE 1:443520
1" = 7 miles



LEGEND

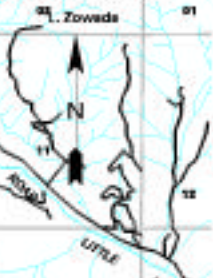
-  APLEGATE SUBBASIN
-  UPPER APLEGATE WATERSHED
-  STAR/BOAZ WATERSHED ANALYSIS AREA

**Applegate-Star/Boaz Watershed Analysis Area
Applegate River Subbasin**



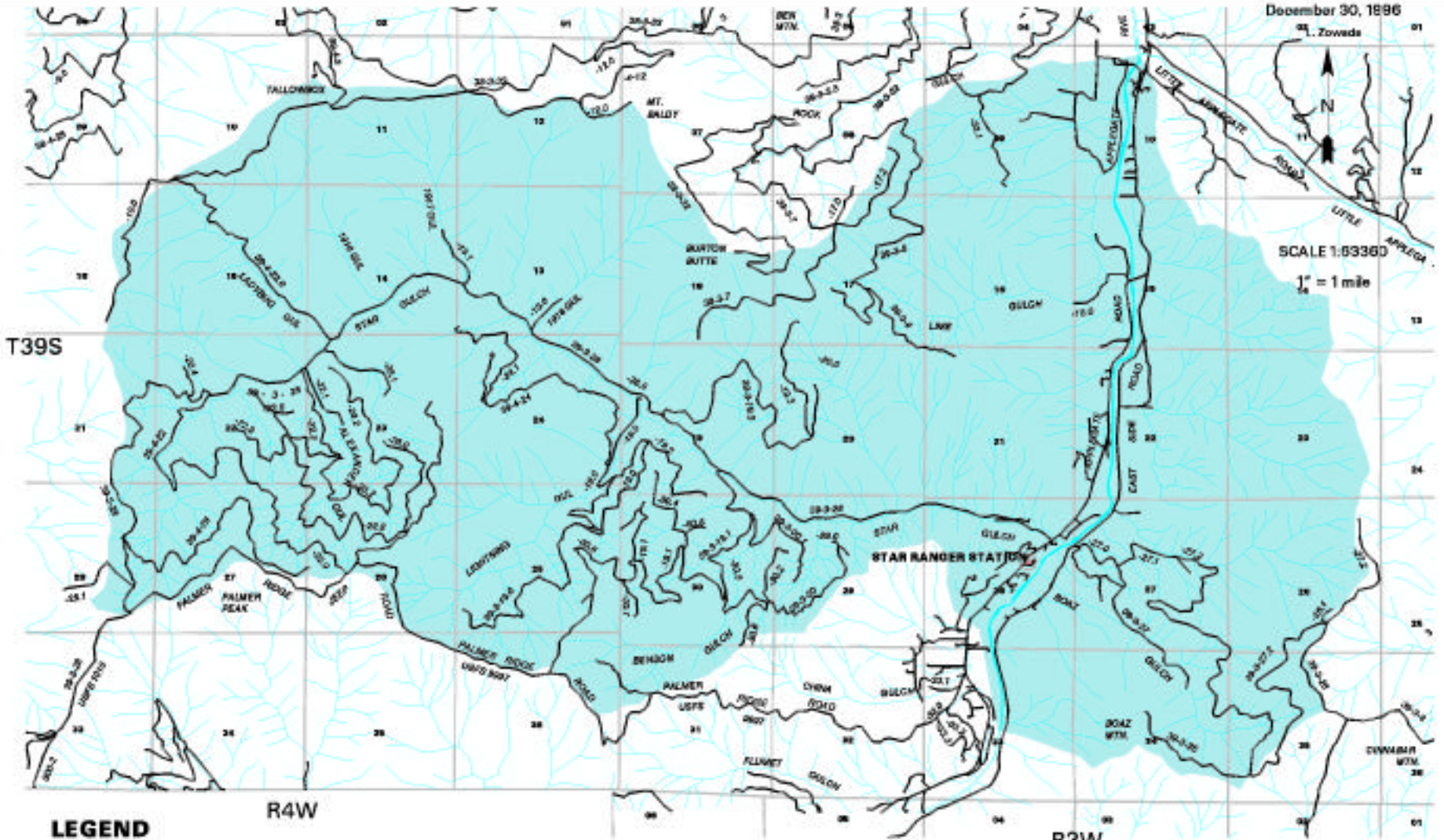
MAP 1

December 30, 1896







SCALE 1:63360

1" = 1 mile



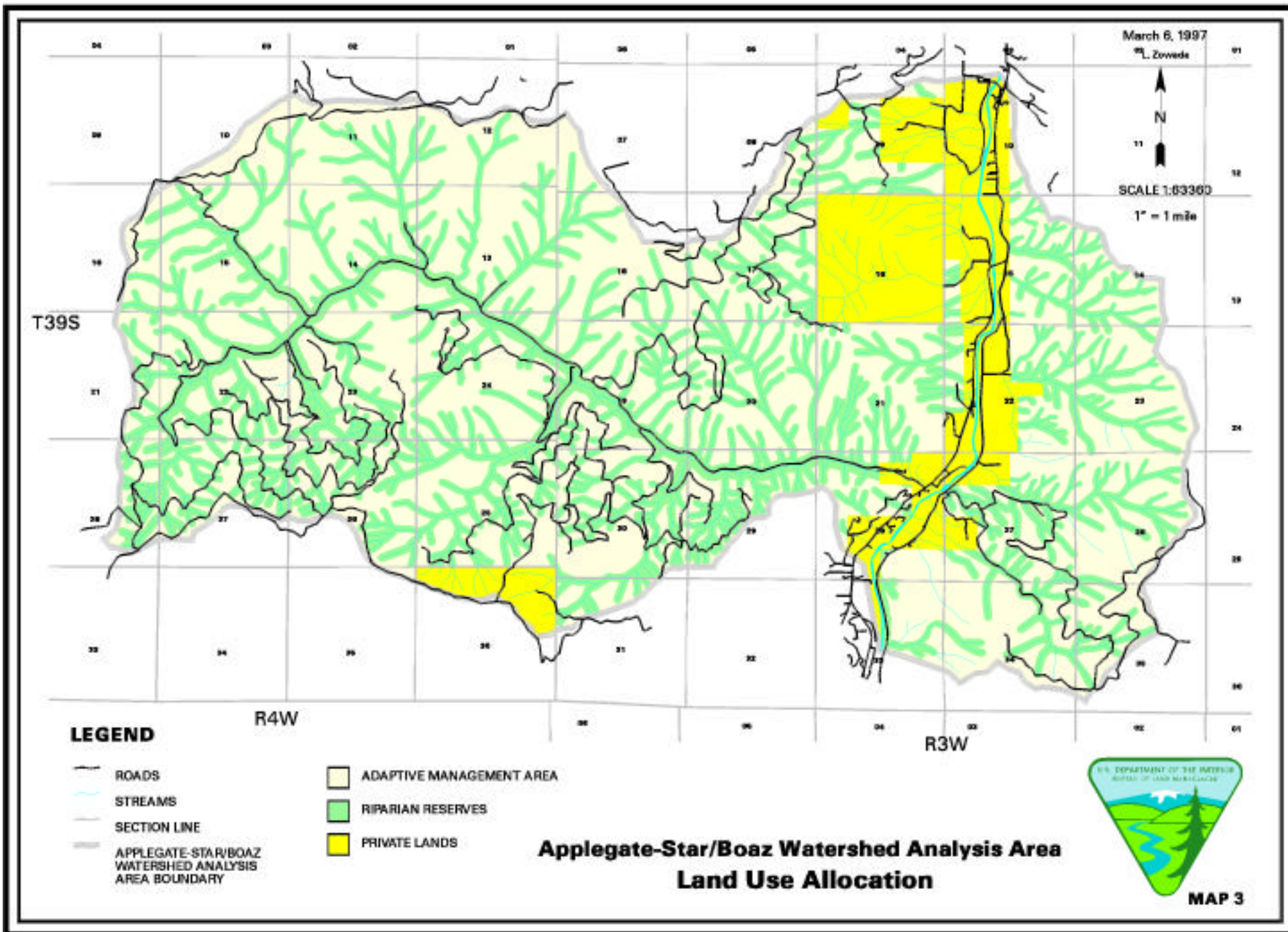
LEGEND

-  ROADS
-  STREAMS
-  SECTION LINE
-  APPLEGATE-STAR/BOAZ WATERSHED ANALYSIS AREA

Applegate-Star/Boaz Watershed Analysis Area
Applegate-Star/Boaz Watershed Analysis Area



MAP 2



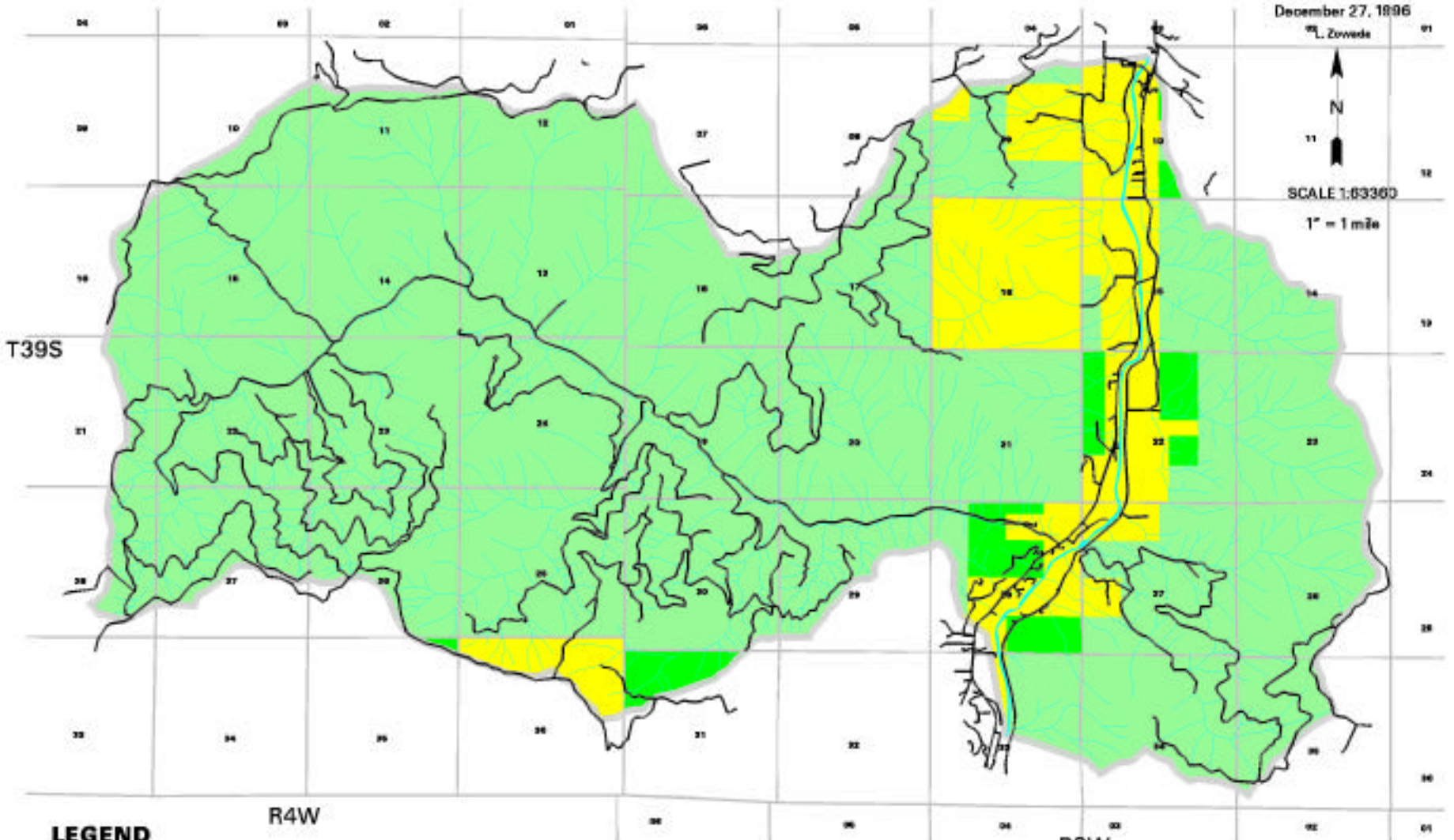
December 27, 1896

L. Zwolske









SCALE 1:83360

1" = 1 mile



LEGEND

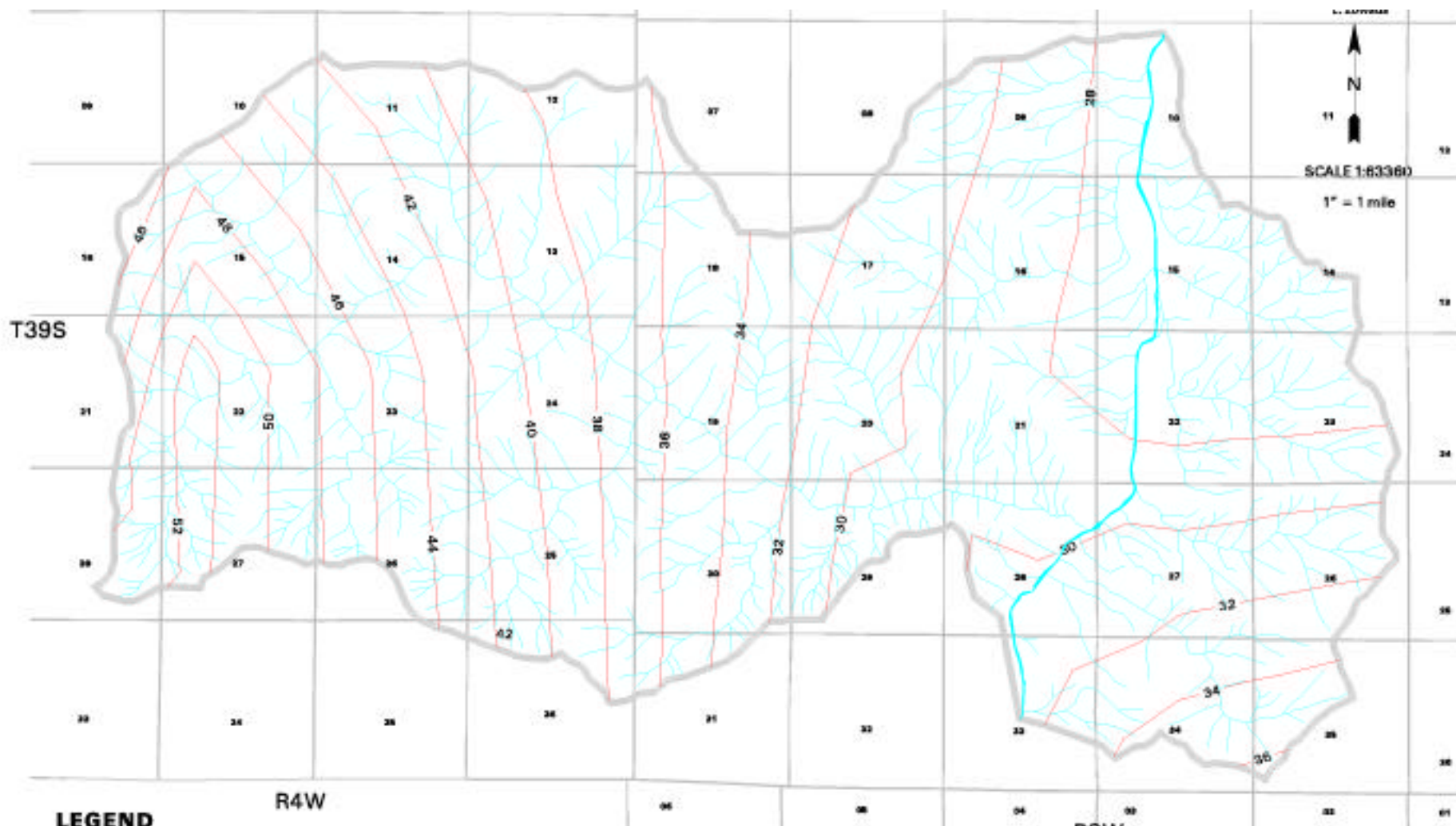
-  ROADS
-  STREAMS
-  SECTION LINE
-  APPLAGATE-STAR/BOAZ WATERSHED ANALYSIS AREA BOUNDARY

-  BUREAU OF LAND MANAGEMENT
-  U.S. FOREST SERVICE
-  PRIVATE LANDS





**Applegate-Star/Boaz Watershed Analysis Area
Land Ownership**



MAP 4

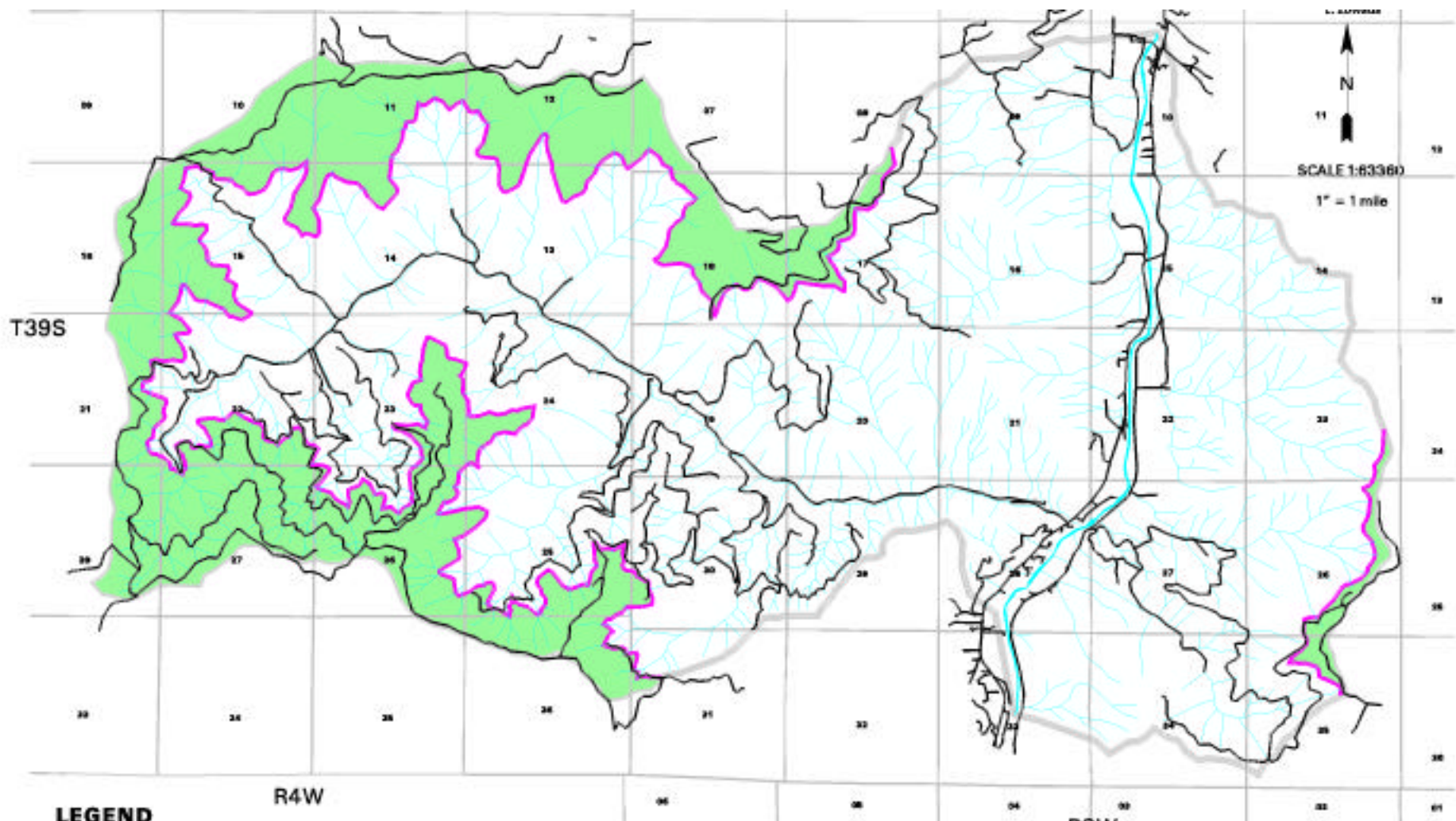


LEGEND

-  STREAM
-  SECTION LINE
-  AVERAGE ANNUAL PRECIPITATION ISOLINE (source: Oregon Climate Service, 1995)
-  APPLIGATE-STAR/BOAZ WATERSHED ANALYSIS AREA BOUNDARY

**Applegate-Star/Boaz Watershed Analysis Area
Average Annual Precipitation**



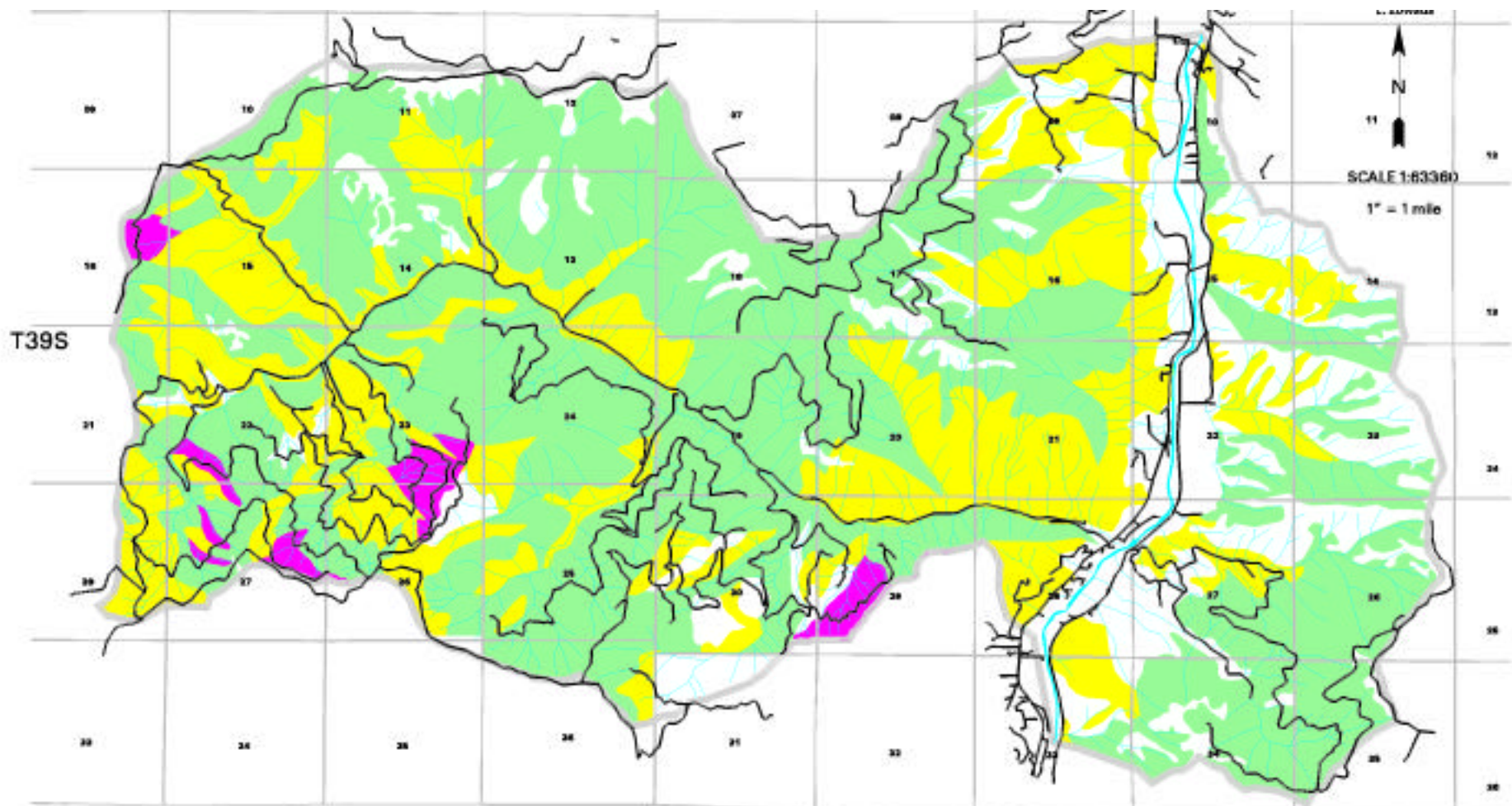


LEGEND

-  ROADS
-  STREAMS
-  SECTION LINE
-  APPLAGATE-STAR/BOAZ WATERSHED ANALYSIS AREA BOUNDARY
-  3500' ELEVATION BAND
-  TRANSIENT SNOWZONE (3500'-5000' ELEVATION)

**Applegate-Star/Boaz Watershed Analysis Area
Transient Snow Zone**





L. SAFFORD
 N
 11
 SCALE 1:63360
 1" = 1 mile

T39S

R4W

R3W

LEGEND

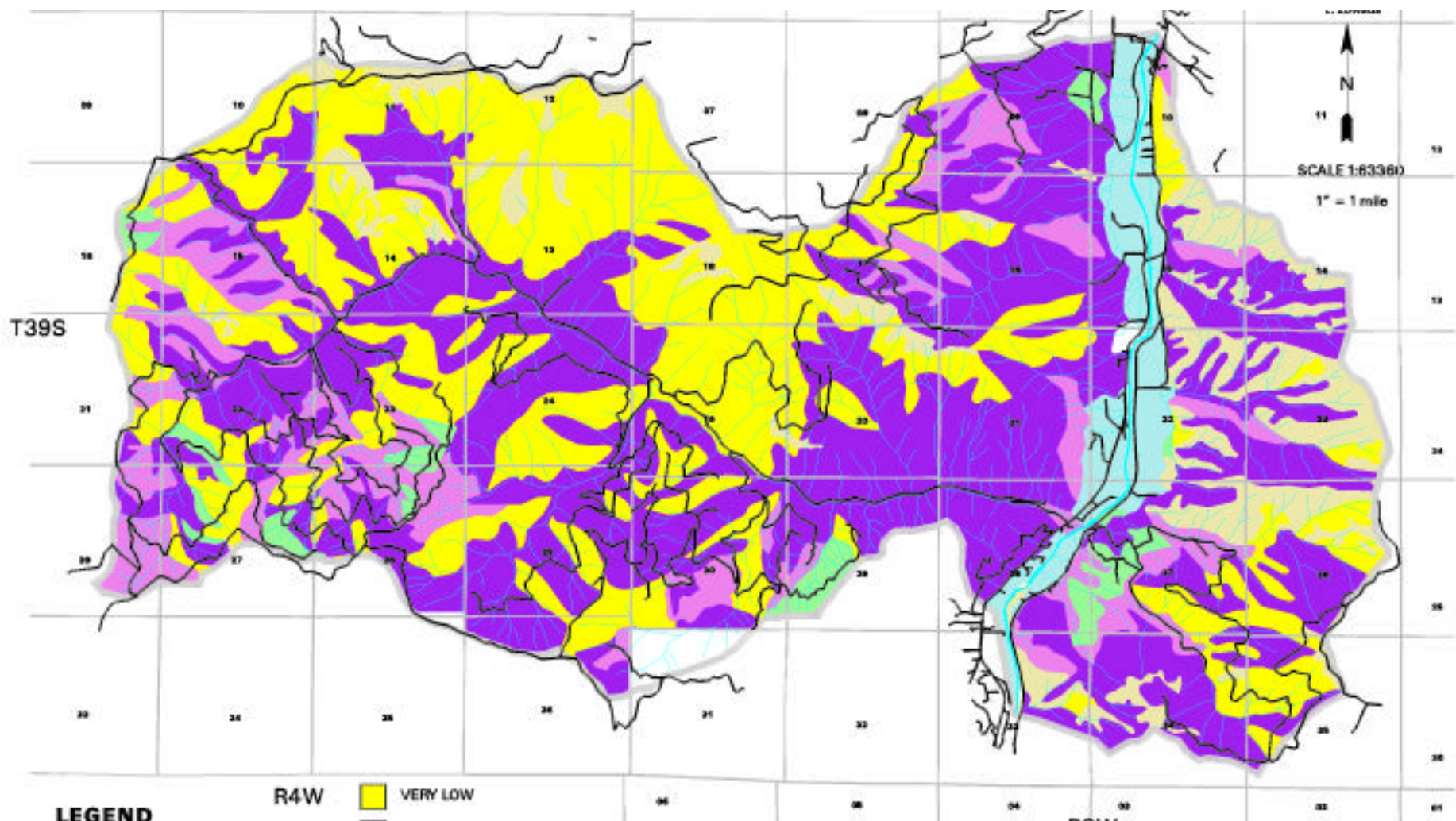
- ROADS
- STREAMS
- SECTION LINE
- APPLAGATE-STAR/BOAZ WATERSHED ANALYSIS AREA BOUNDARY

- VERY STEEP WITH RAVEL POTENTIAL (CARIS-OFFENBACHER)
- MODERATE TO STEEP WITH CONCENTRATED FLOW POTENTIAL (VANNOY)
- VERY STEEP GRANITICS WITH HIGH EROSION HAZARD (TALLOWBOX)

**Applegate-Star/Boaz Watershed Analysis Area
 Soil Erosion**



MAP 7



LEGEND

- ROADS
- STREAMS
- SECTION LINE
- APPLAGATE-STAR/BOAZ WATERSHED ANALYSIS AREA BOUNDARY

- VERY LOW
- LOW
- MEDIUM
- HIGH
- NONFOREST
- AGRICULTURAL
- UNKNOWN

**Applegate-Star/Boaz Watershed Analysis Area
Intrinsic Soil Productivity**



MAP 8

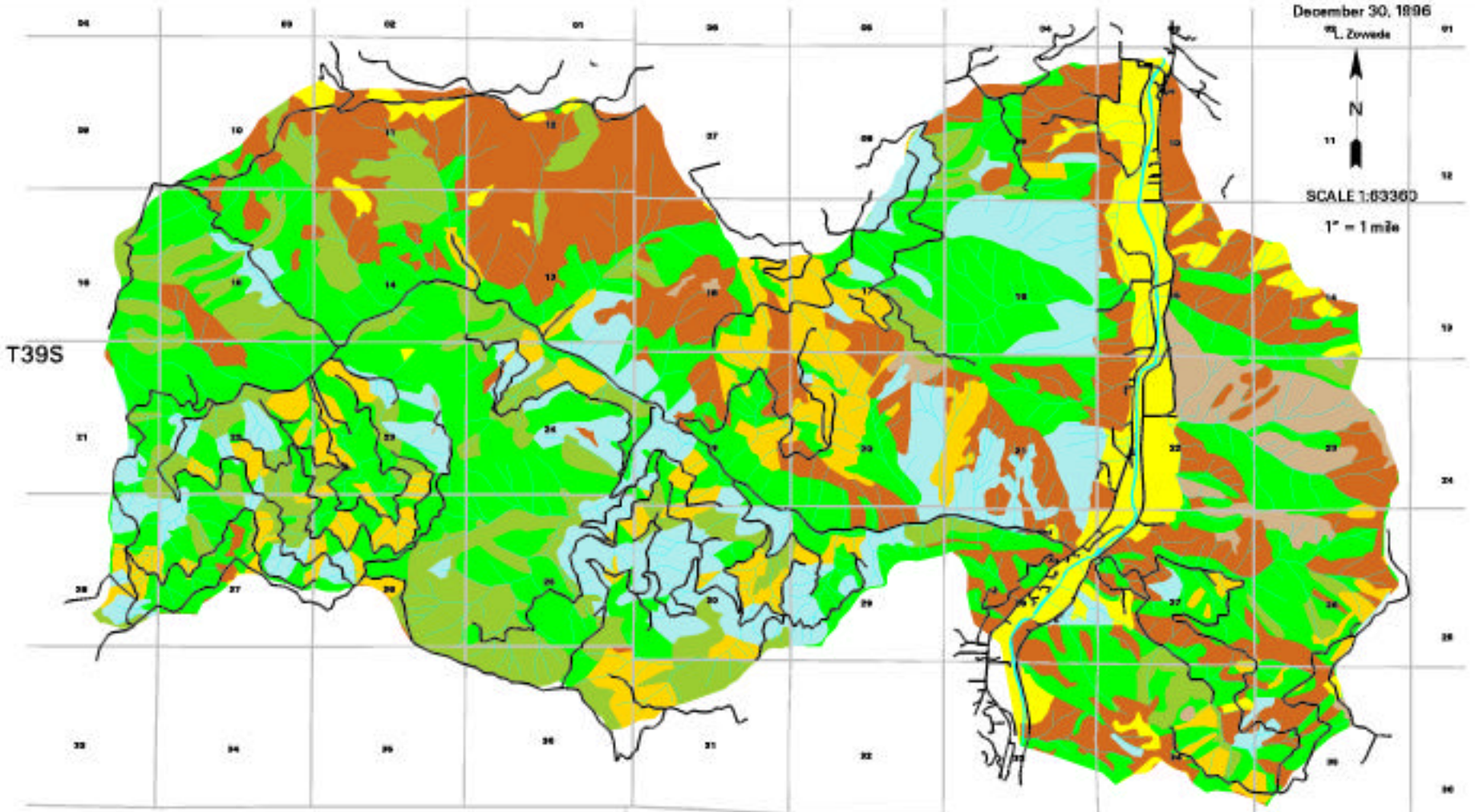
December 30, 1896

L. Zwede



SCALE 1:63360

1" = 1 mile



T39S

R4W

R3W

LEGEND

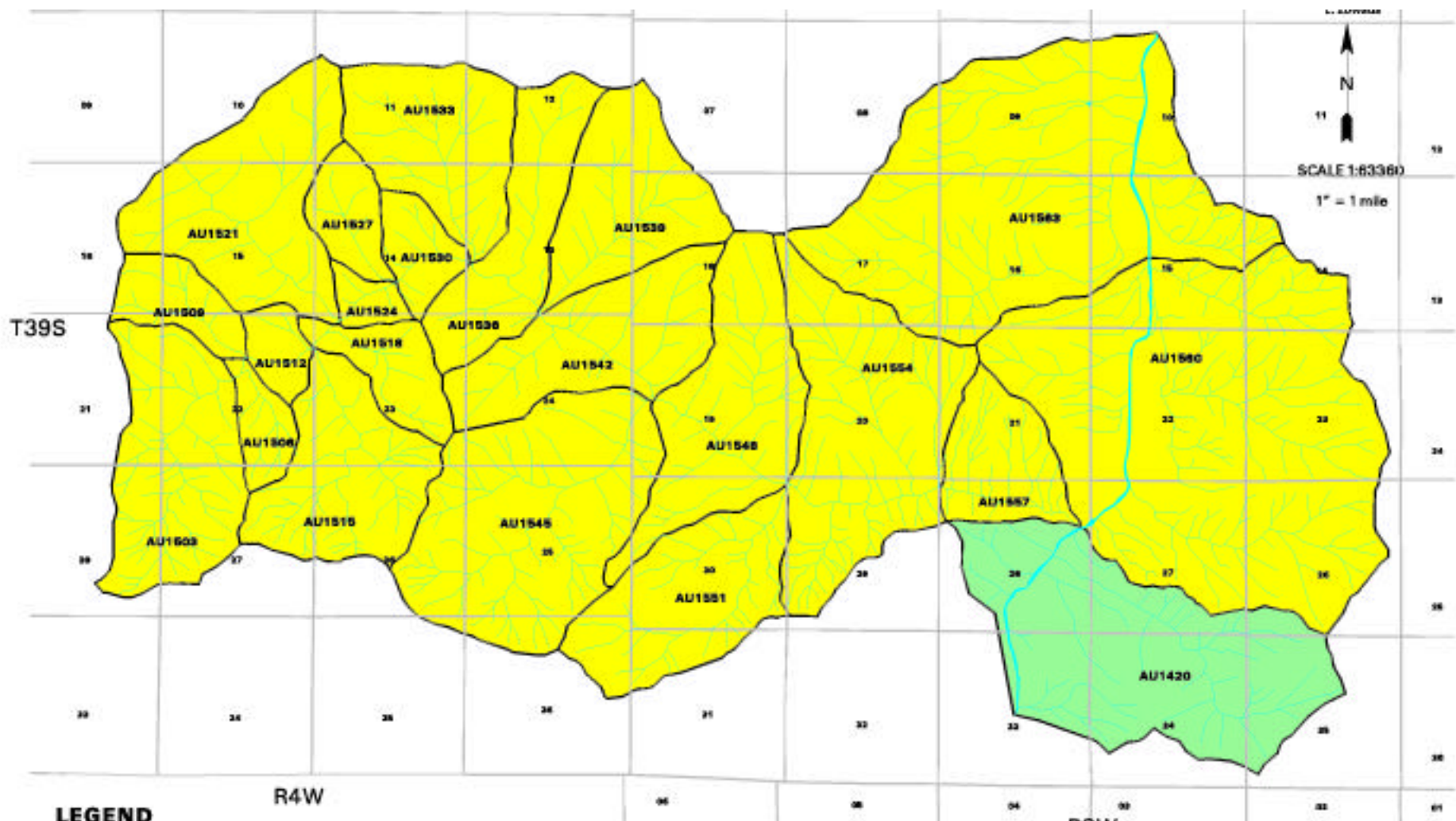
-  ROADS
-  STREAMS
-  SECTION LINE

-  GRASS/FORBS
-  SHRUBS
-  HARDWOOD/WOODLAND
-  EARLY SERAL
-  POLES (6-11" DBH)
-  MID SERAL (11-21" DBH)
-  MATURE/OLD GROWTH (21"+ DBH)

**Applegate-Star/Boaz Watershed Analysis Area
Vegetation Condition Classes**



MAP 9



LEGEND

-  STREAMS
-  SECTION LINE
-  DRAINAGE AREA
-  ANALYSIS AREA WITHIN BEAVER SUBWATERSHED
-  STAR SUBWATERSHED
-  APPLAGATE RIVER

**Applegate-Star/Boaz Watershed Analysis Area
Drainage Areas and Streams**



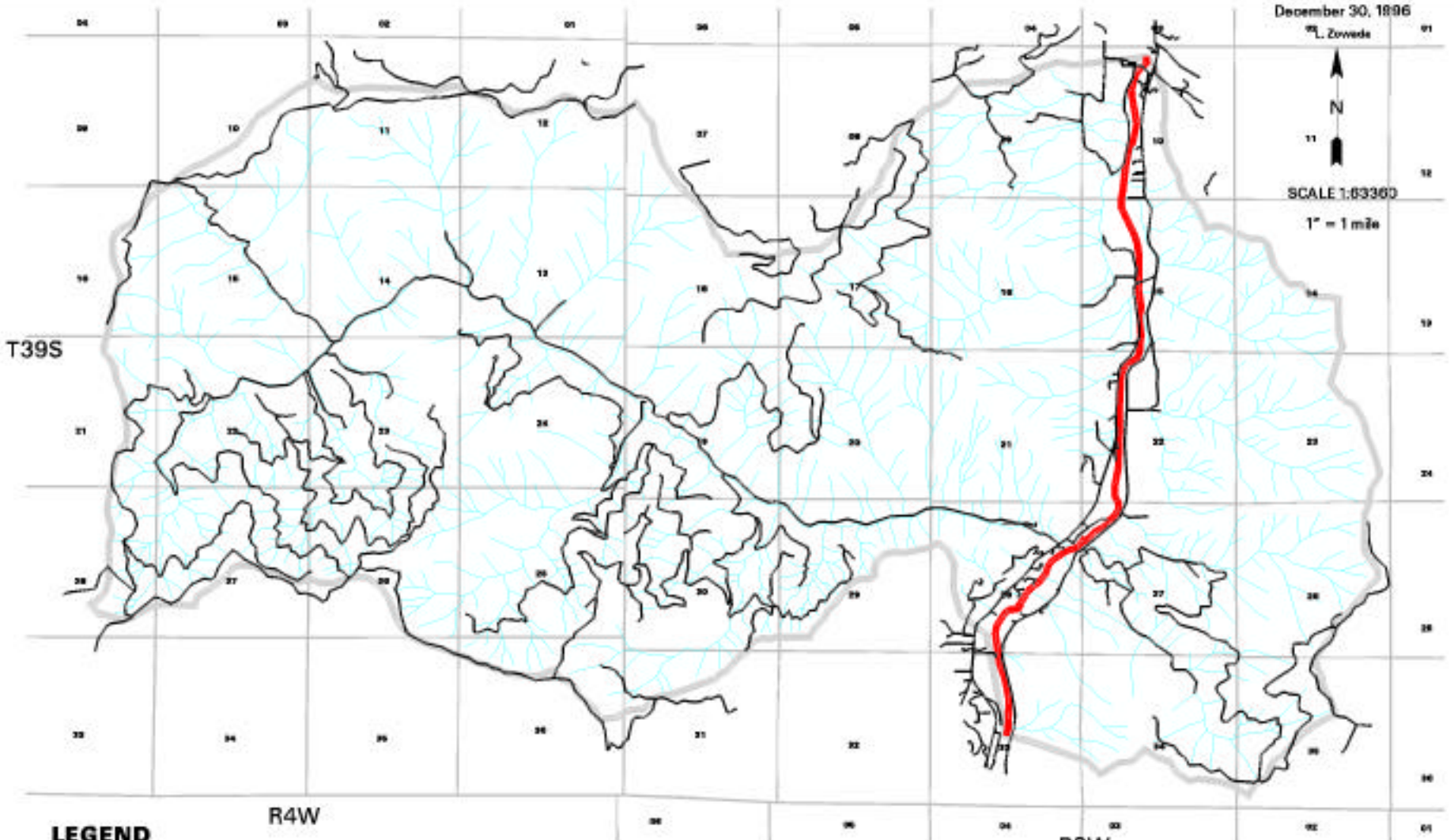
December 30, 1896

L. Zwede






SCALE 1:83360

1" = 1 mile



LEGEND

-  ROADS
-  STREAMS
-  SECTION LINE
-  APPLAGATE-STAR/BOAZ WATERSHED ANALYSIS AREA BOUNDARY
-  COHO SALMON STREAM

**Applegate-Star/Boaz Watershed Analysis Area
Coho Salmon Distribution**



MAP 11

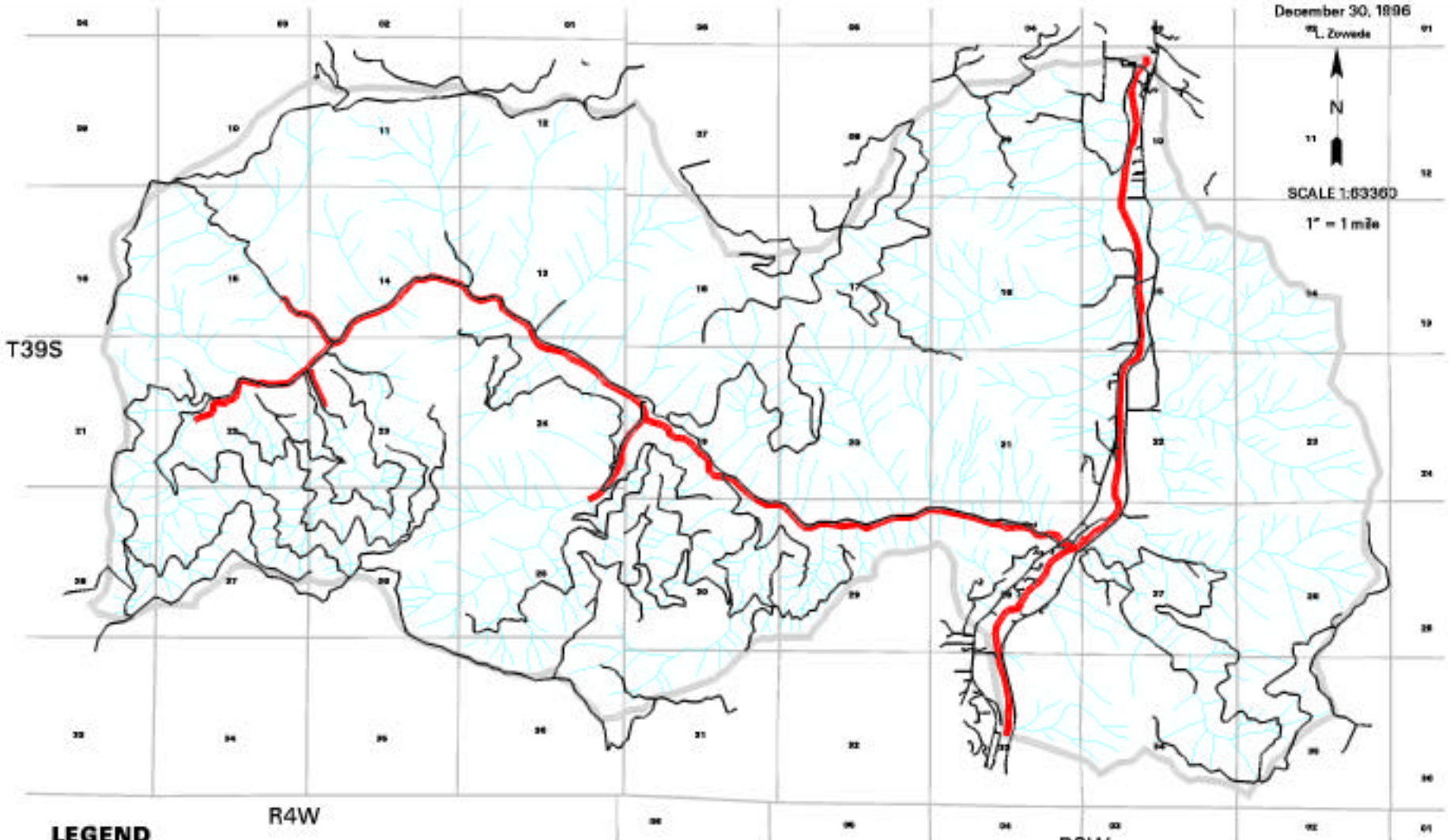
December 30, 1896

L. Zwede



SCALE 1:83360

1" = 1 mile



LEGEND

-  ROADS
-  STREAMS
-  SECTION LINE
-  APPLGATE-STAR/BOAZ WATERSHED ANALYSIS AREA BOUNDARY
-  STEELHEAD STREAM

**Applegate-Star/Boaz Watershed Analysis Area
Steelhead Distribution**



MAP 12

December 30, 1896

L. Zwolski



SCALE 1:83360

1" = 1 mile

T39S

R4W

R3W

LEGEND

-  ROADS
-  STREAMS
-  SECTION LINE
-  APPLIGATE-STAR/BOAZ WATERSHED ANALYSIS AREA BOUNDARY
-  CUTTHROAT TROUT STREAM

**Applegate-Star/Boaz Watershed Analysis Area
Cutthroat Trout Distribution**



MAP 13

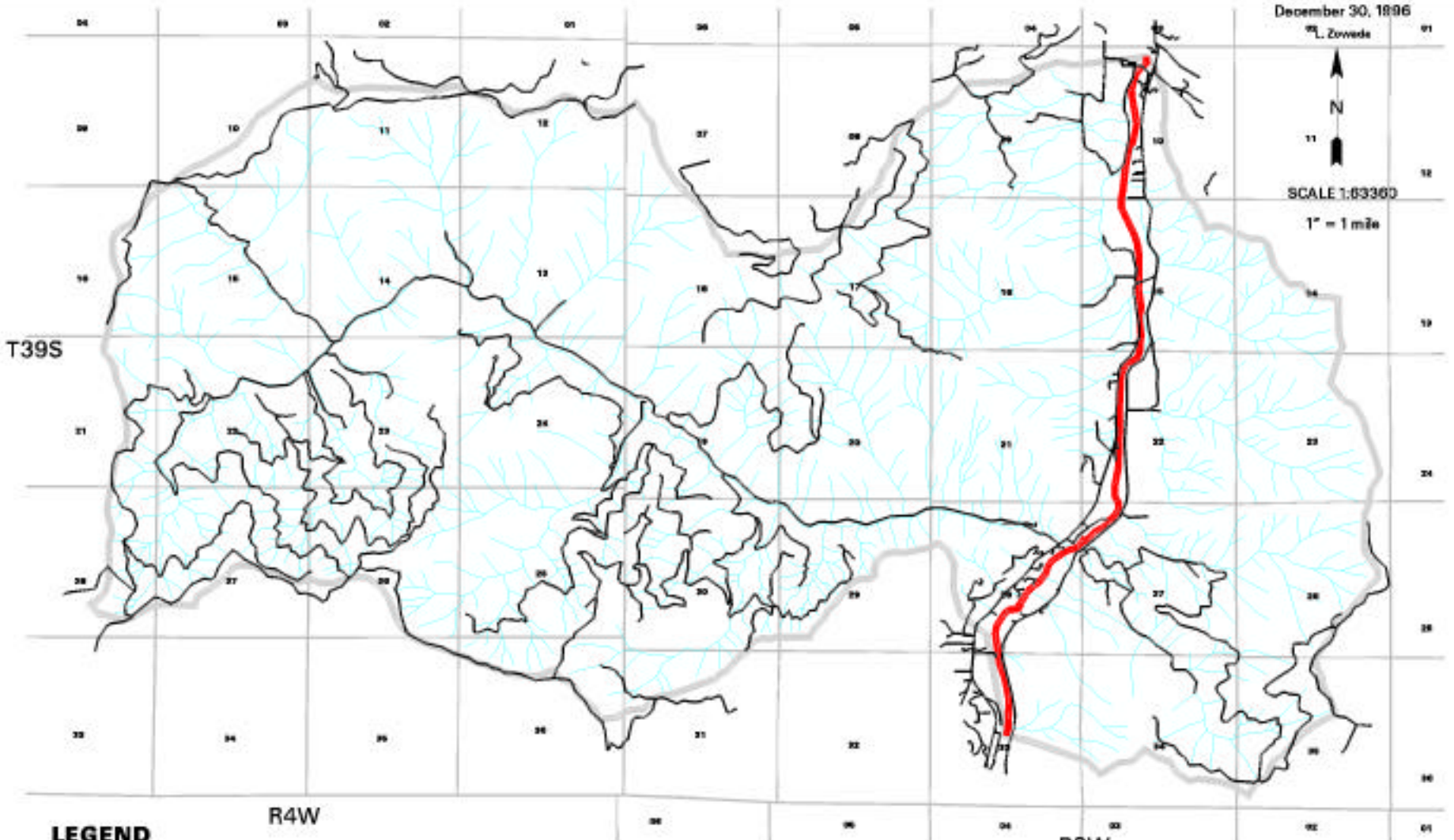
December 30, 1896

L. Zwede



SCALE 1:83360

1" = 1 mile



LEGEND

-  ROADS
-  STREAMS
-  SECTION LINE
-  APPLAGATE-STAR/BOAZ WATERSHED ANALYSIS AREA BOUNDARY
-  RAINBOW TROUT STREAM

**Applegate-Star/Boaz Watershed Analysis Area
Rainbow Trout Distribution**



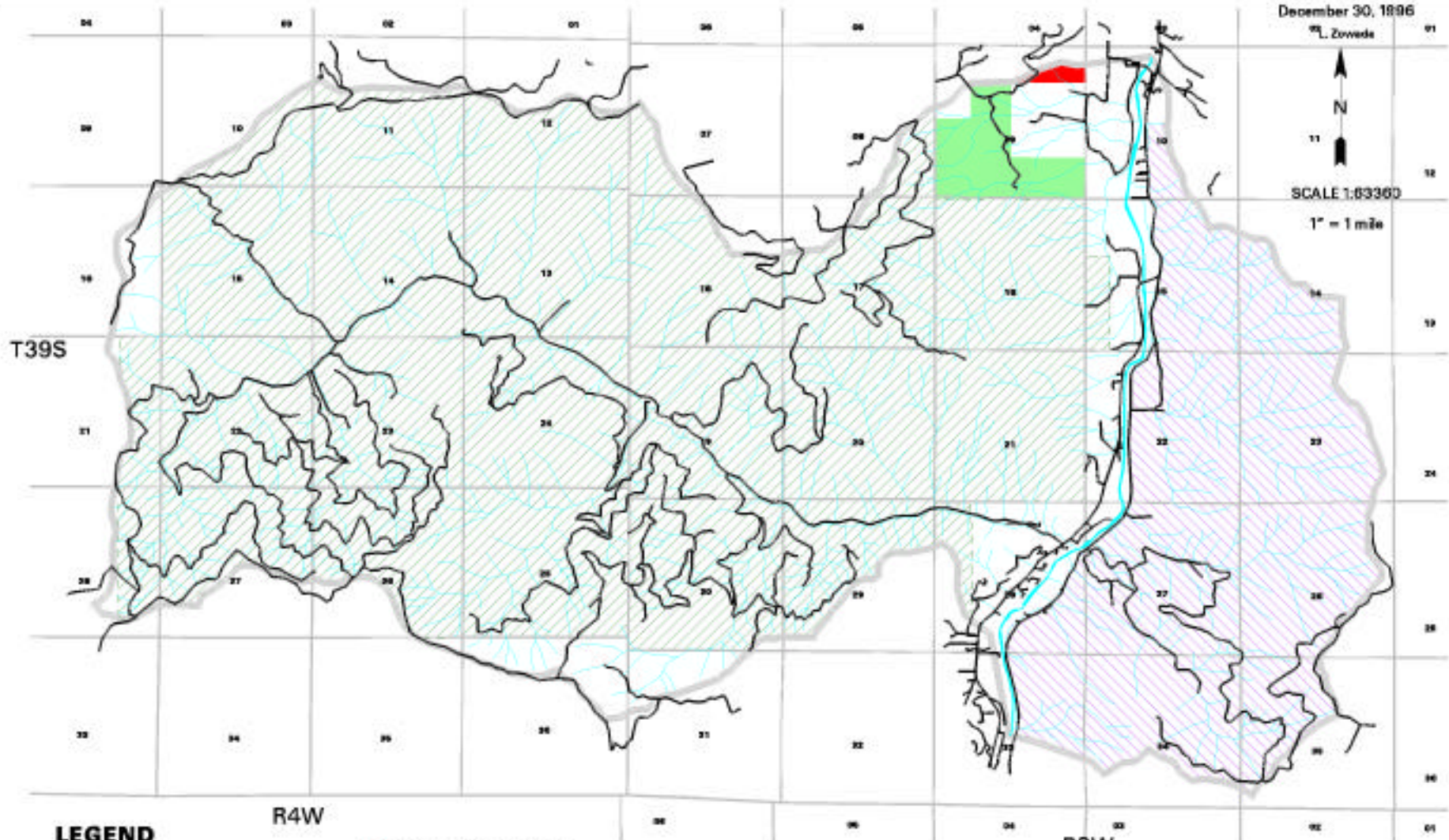
December 30, 1896

L. Zwede







SCALE 1:83360

1" = 1 mile



LEGEND

-  ROADS
-  STREAMS
-  SECTION LINE
-  APPLAGATE-STAR/BOAZ WATERSHED ANALYSIS AREA BOUNDARY

-  ALLOTMENT 20222-01
-  ALLOTMENT 20222-02
-  ALLOTMENT 20201-01
-  ALLOTMENT 20206-01

**Applegate-Star/Boaz Watershed Analysis Area
Grazing Allotments**



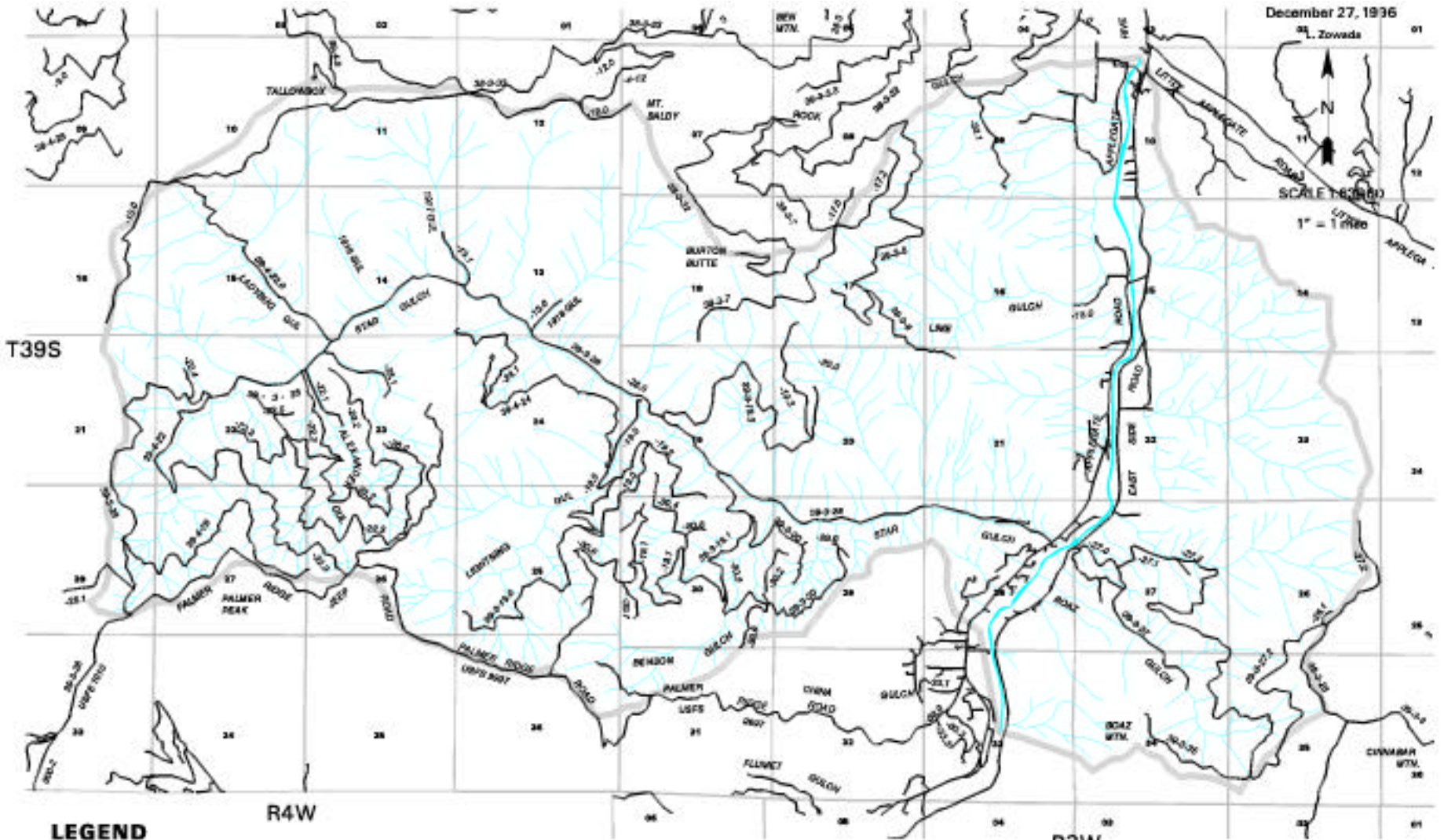
December 27, 1936

L. Zowada

SCALE 6000

1" = 1 MILE

N



T39S

R4W

R3W

LEGEND

- ROADS
- STREAMS
- SECTION LINE
- APPLAGATE-STAR/BOAZ WATERSHED ANALYSIS AREA BOUNDARY

**Applegate-Star/Boaz Watershed Analysis Area
Transportation System**



MAP 16

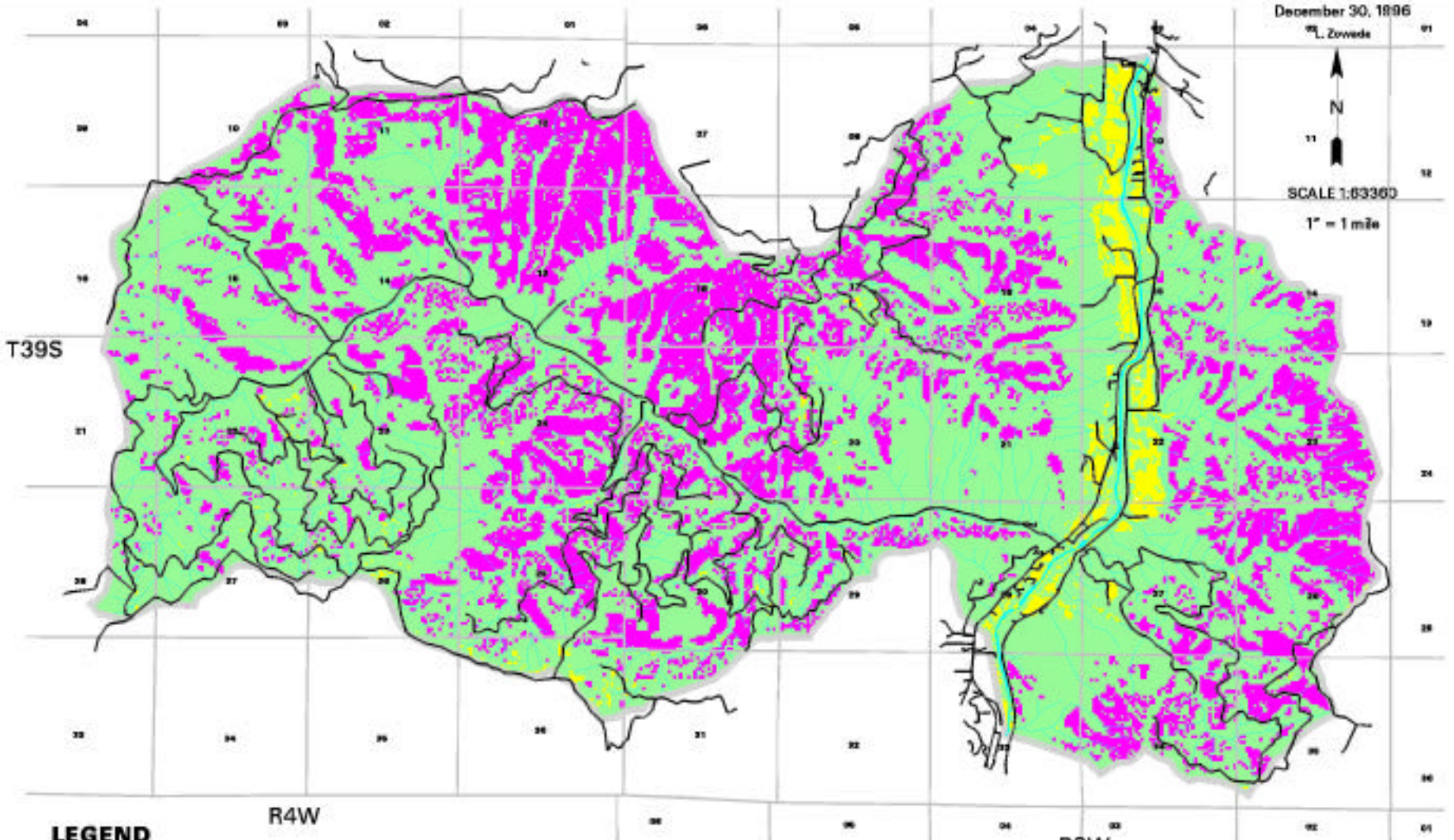
December 30, 1896

L. Zwolske










SCALE 1:83360

1" = 1 mile



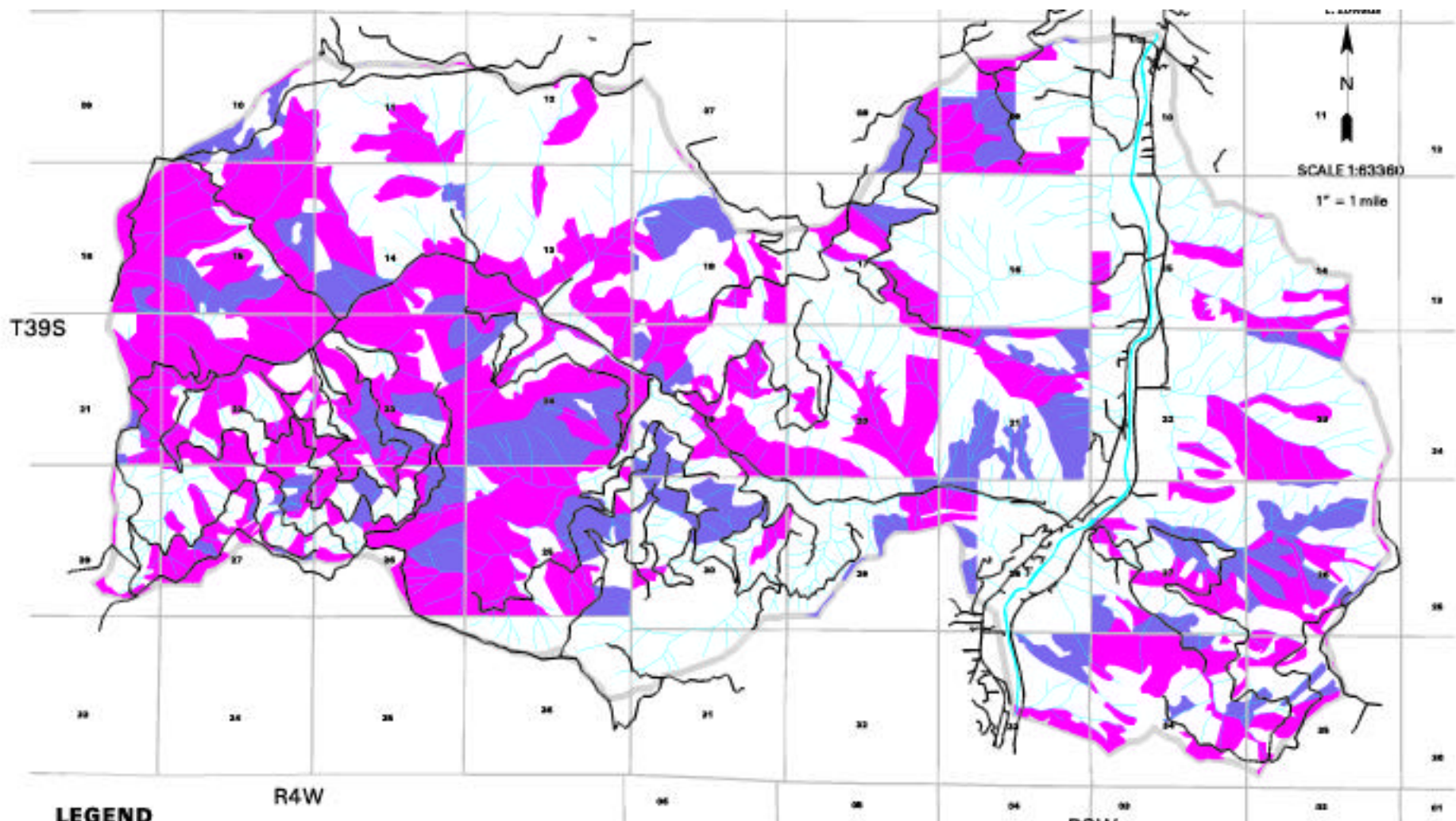
LEGEND

-  ROADS
-  STREAMS
-  SECTION LINE
-  APPLAGATE-STAR/BOAZ WATERSHED ANALYSIS AREA BOUNDARY

-  LOW FUEL HAZARD
-  MEDIUM FUEL HAZARD
-  HIGH FUEL HAZARD

Applegate-Star/Boaz Watershed Analysis Area
Fire Hazard



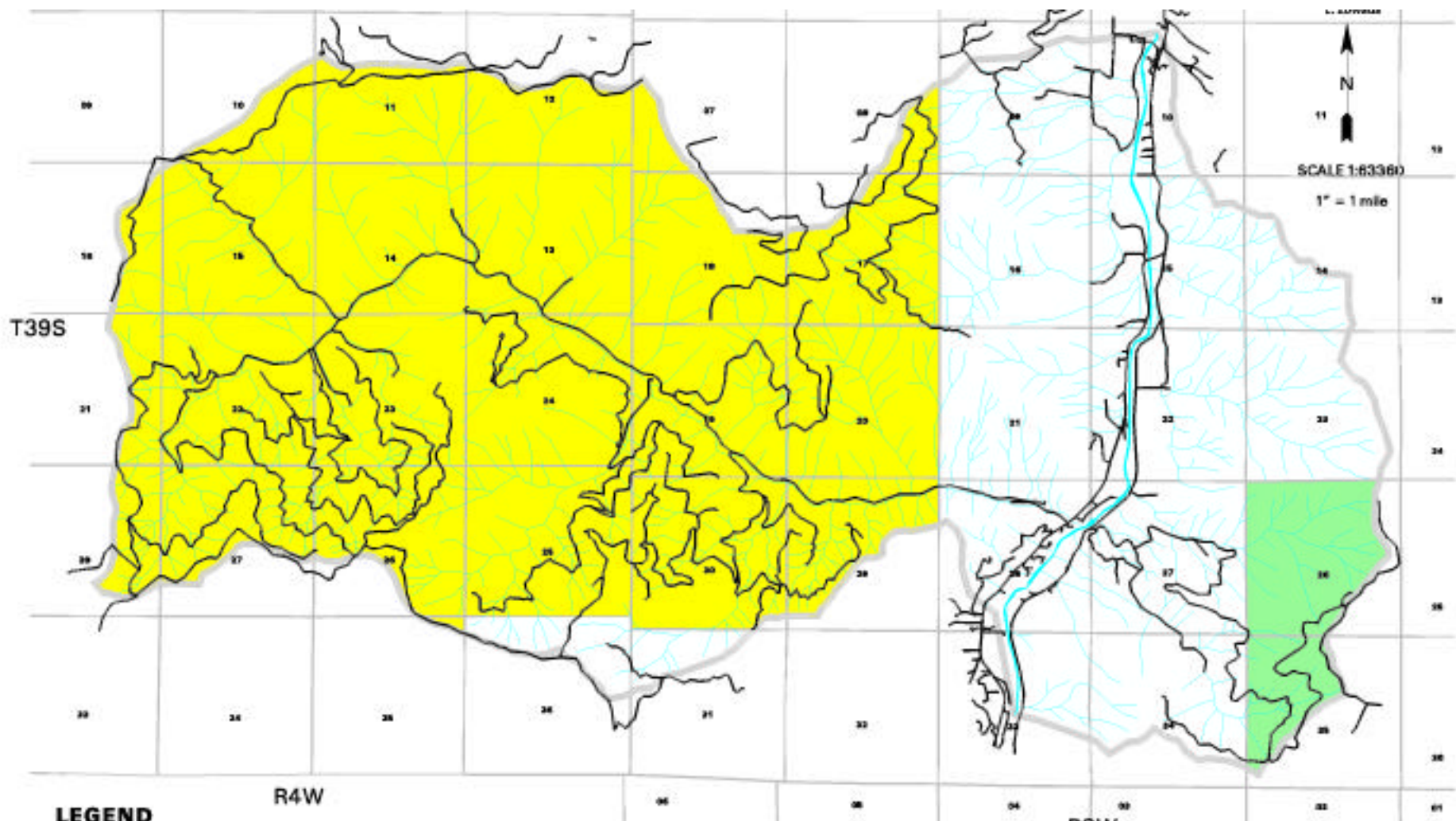


LEGEND





-  ROADS
-  STREAMS
-  SECTION LINE
-  APPLAGATE-STAR/BOAZ WATERSHED ANALYSIS AREA BOUNDARY
-  SUITABLE HABITAT
-  DISPERSAL HABITAT



**Applegate-Star/Boaz Watershed Analysis Area
Spotted Owl Habitat Distribution**





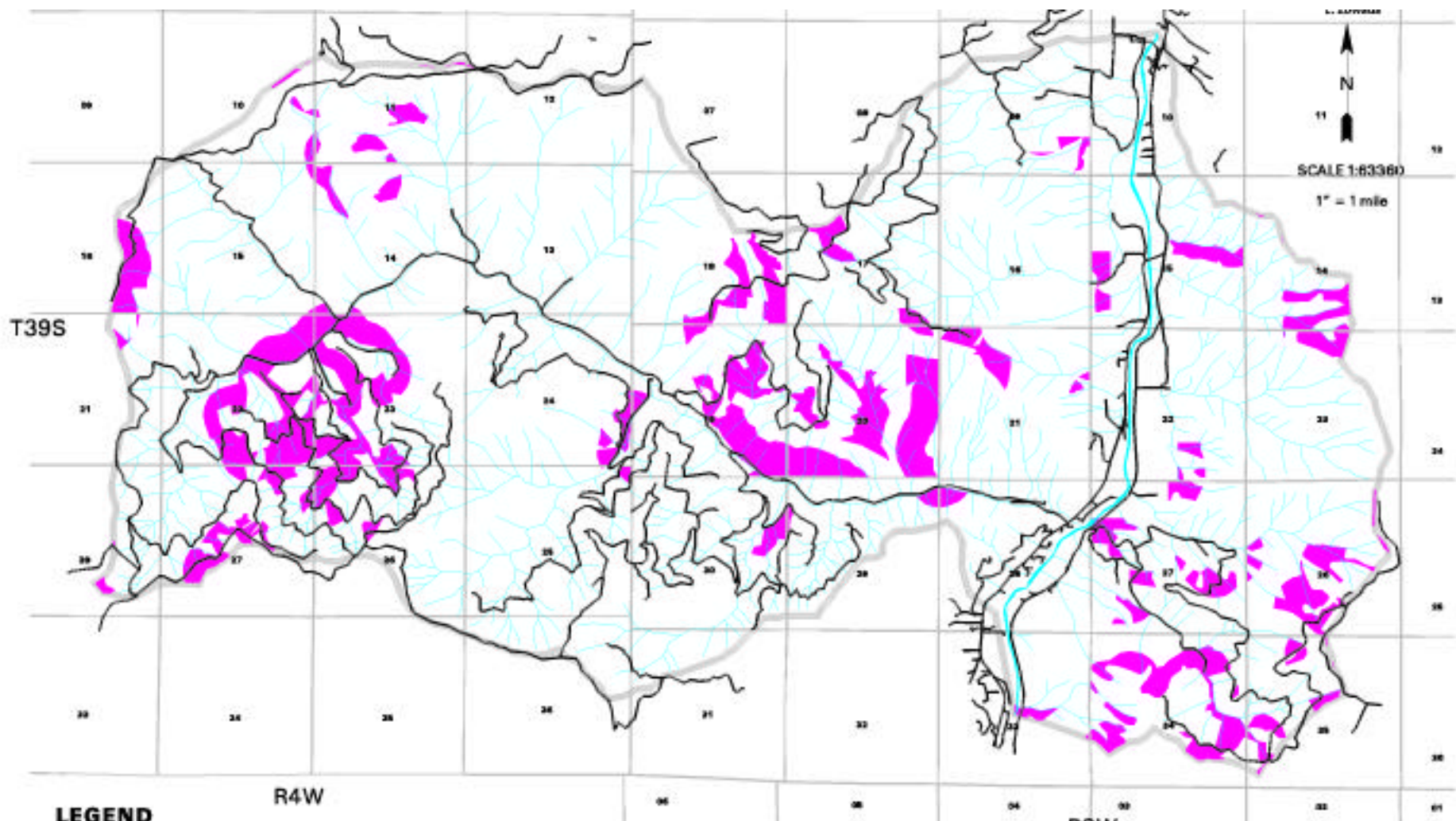
LEGEND

-  ROADS
-  STREAMS
-  SECTION LINE
-  APPLIGATE-STAR/BOAZ WATERSHED ANALYSIS AREA BOUNDARY

-  OR-74 CRITICAL HABITAT UNIT
-  OR-75 CRITICAL HABITAT UNIT

**Applegate-Star/Boaz Watershed Analysis Area
Spotted Owl Critical Habitat Units**





LEGEND

-  ROADS
-  STREAMS
-  SECTION LINE
-  APPLAGATE-STAR/BOAZ WATERSHED ANALYSIS AREA BOUNDARY
-  POTENTIAL GREAT GRAY OWL HABITAT

**Applegate-Star/Boaz Watershed Analysis Area
Potential Great Gray Owl Habitat**



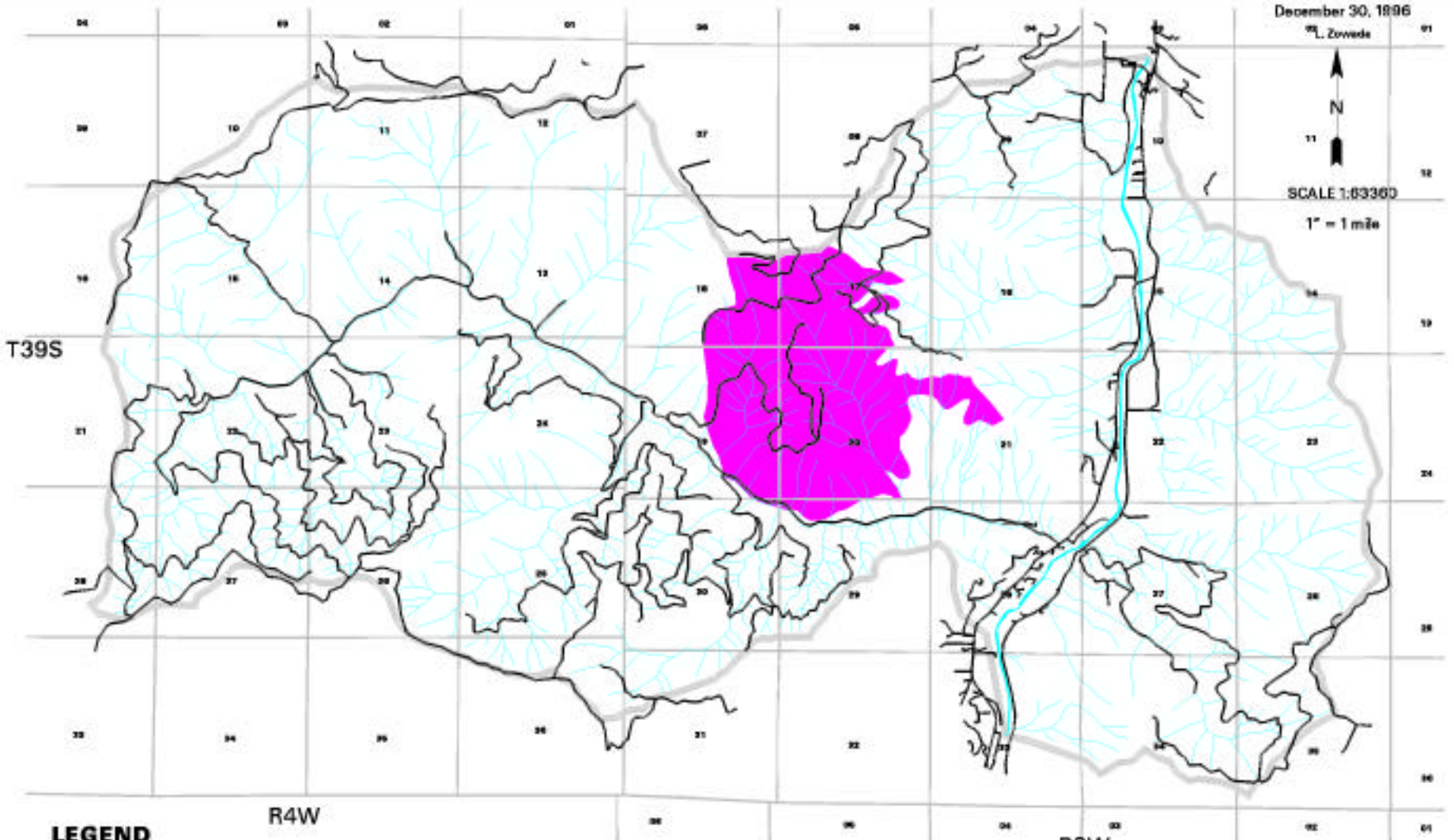
December 30, 1896

L. Zwolski







SCALE 1:83360

1" = 1 mile



LEGEND

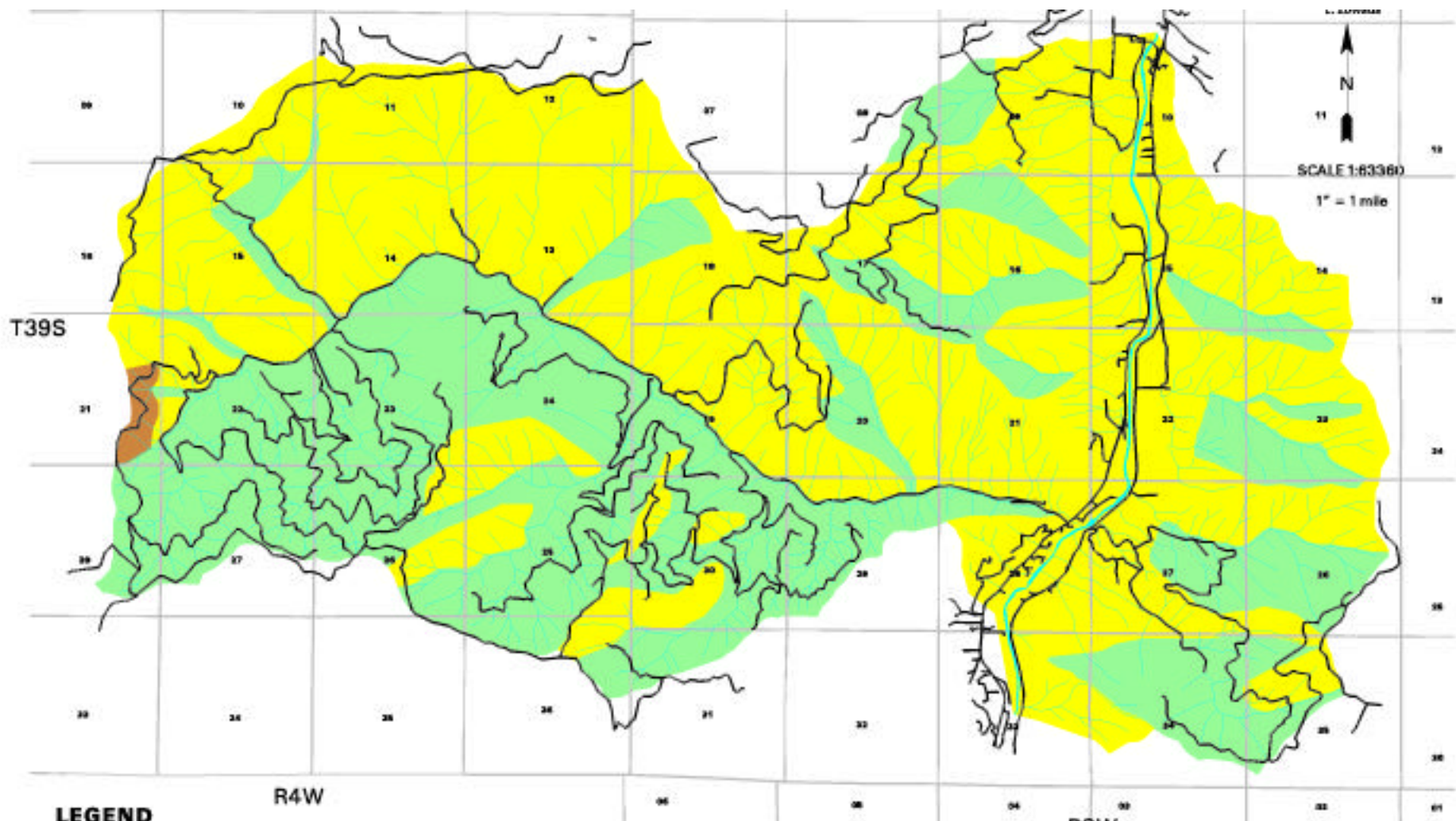
-  ROADS
-  STREAMS
-  SECTION LINE
-  APPLAGATE-STAR/BOAZ WATERSHED ANALYSIS AREA BOUNDARY

 1987 FIRE & FIRE SALVAGE AFFECTED SOILS (> 70% OF AREA AFFECTED)

**Applegate-Star/Boaz Watershed Analysis Area
Fire Affected Soils**



MAP 21



LEGEND

- ROADS
- STREAMS
- SECTION LINE

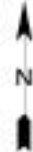
- DOUGLAS-FIR
- PONDEROSA PINE
- KNOBCONE PINE

**Applegate-Star/Boaz Watershed Analysis Area
Tree Series**



February 18, 1997

L. Zowada

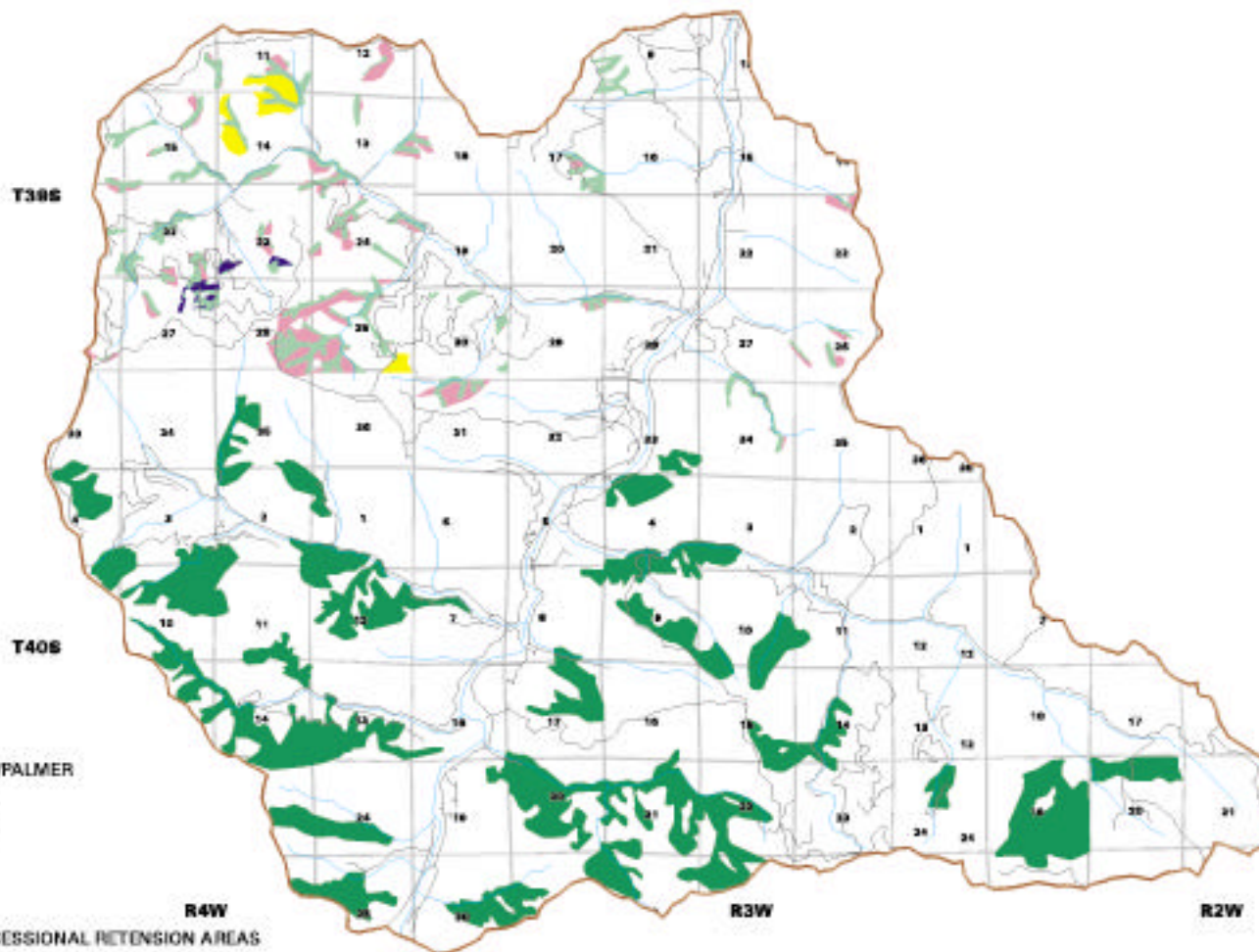


SCALE 1:128720

1" = 2 miles

LEGEND

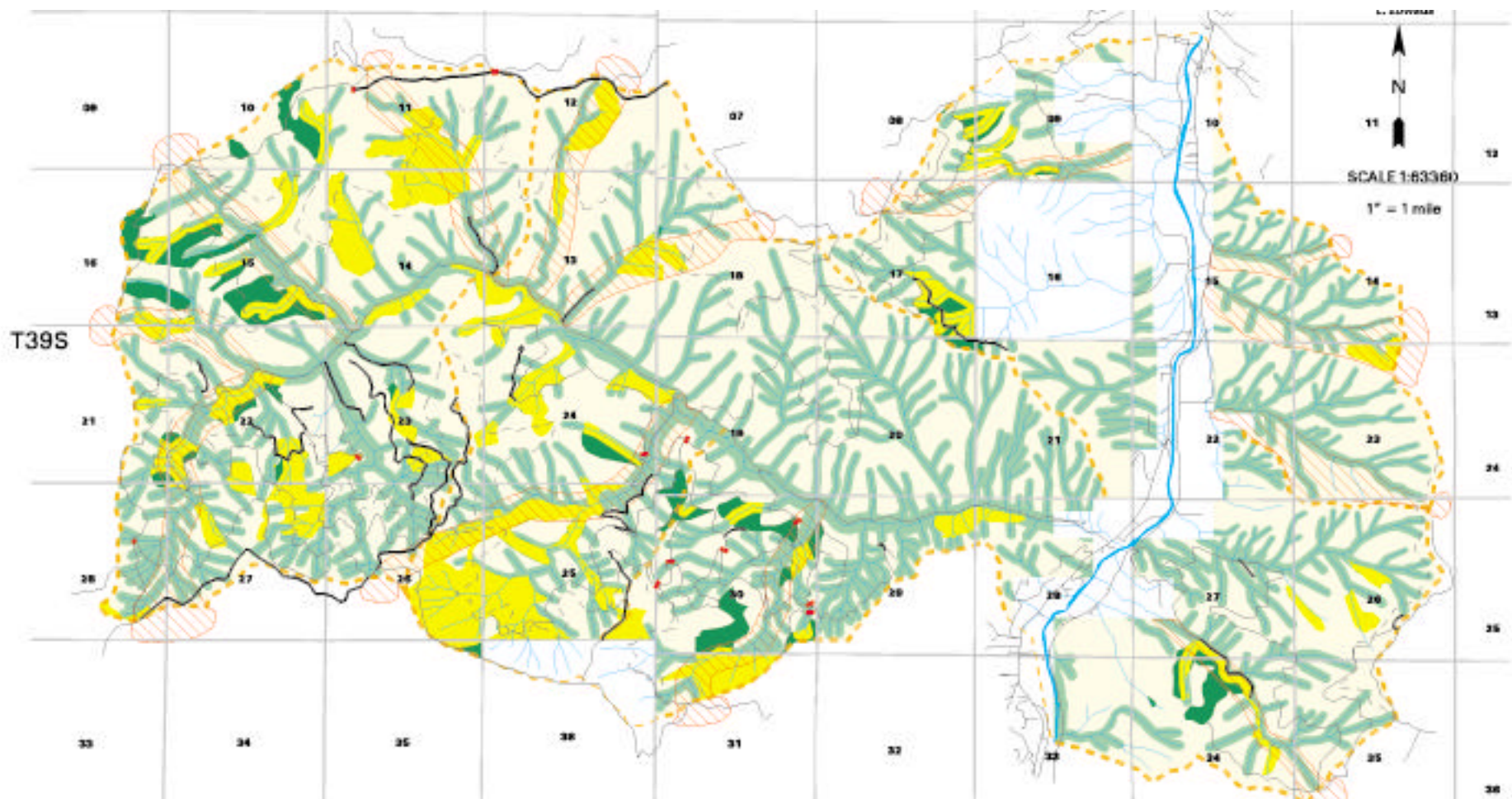
-  STAR/BEAVER/PALMER WATERSHED
-  SECTION LINE
-  ROADS
-  STREAMS
- BLM LATE-SUCCESSIONAL RETENSION AREAS**
-  OLD GROWTH RIPARIAN RESERVE
-  OLD GROWTH DOUGLAS FIR RETENSION
-  OLD GROWTH PONDEROSA PINE RETENSION
-  OLD GROWTH CYPROPIDIUM RETENSION
- USFS LATE-SUCCESSIONAL RETENSION AREAS**
-  LATE-SUCCESSIONAL RETENSION



Star/Beaver/Palmer Fifth Field Watershed 15% Late-Successional Retention Areas



MAP 23



LEGEND

- | | | | |
|--|---|--|---------------------------------------|
| | ROADS | | RIPARIAN RESERVE |
| | ROADS TO BE CONSIDERED FOR DECOMMISSIONING | | 15% LATE SUCCESSIONAL RETENTION AREAS |
| | STREAMS | | OLD GROWTH EMPHASIS AREAS |
| | SECTION LINE | | WILDLIFE CONNECTIVITY CORRIDORS |
| | TRANSIENT SNOW ZONE | | OTHER FEDERAL LANDS |
| | FUEL BREAK | | |
| | SITE TO BE CONSIDERED FOR GATE OR BARRICADE | | |

**Applegate-Star/Boaz Watershed Analysis Area
Landscape Planning**

