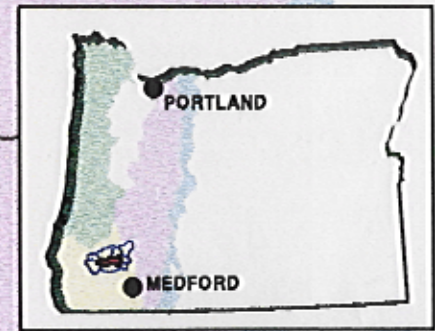
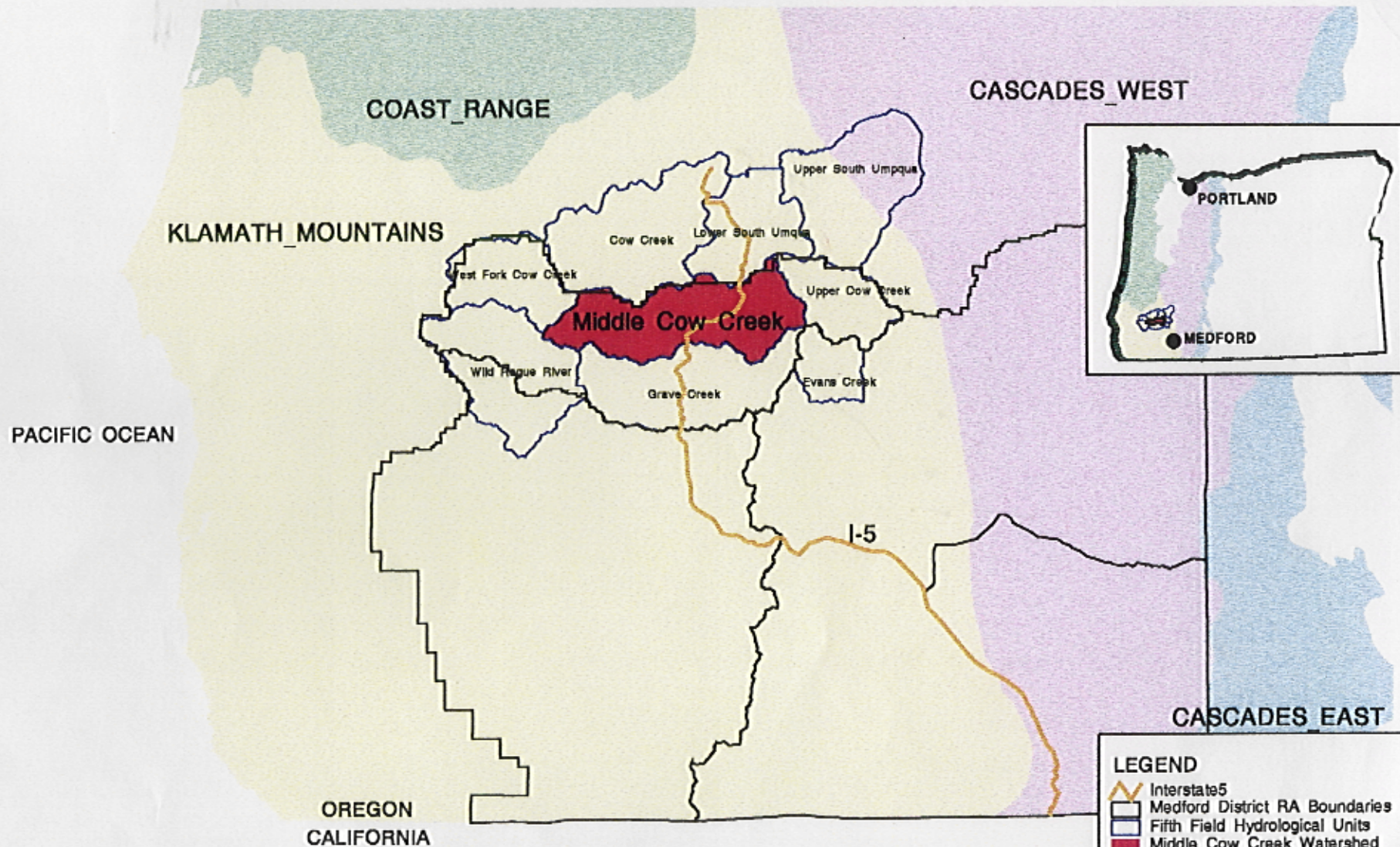


Map 1 Middle Fork Cow Creek Vicinity Map



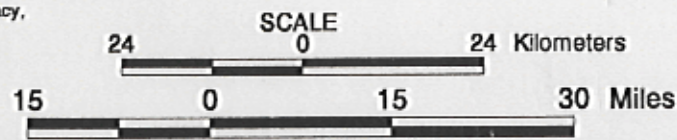
LEGEND

- Interstate 5
- Medford District RA Boundaries
- Fifth Field Hydrological Units
- Middle Cow Creek Watershed

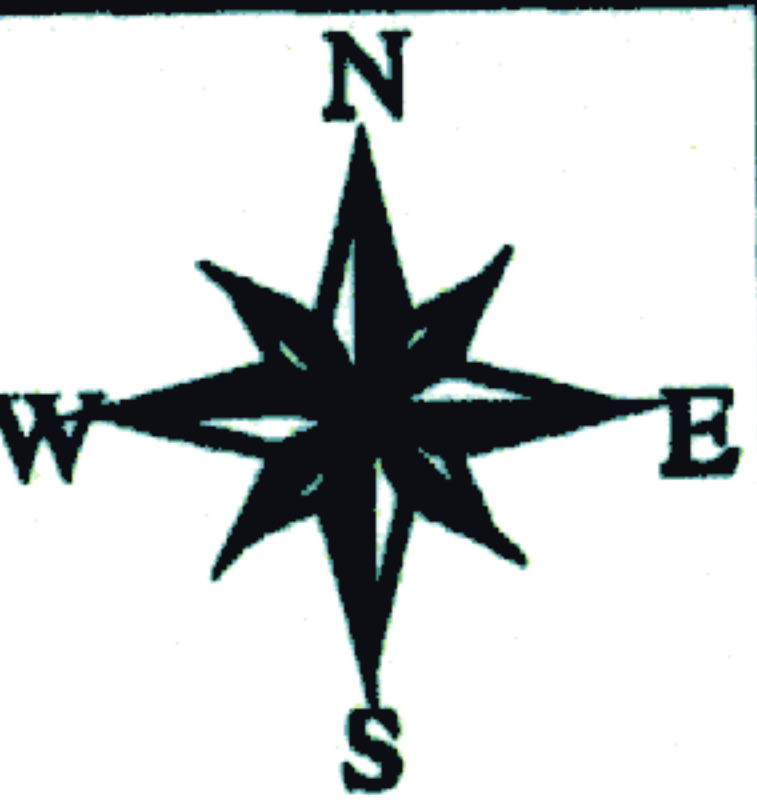
Physical Provinces

- CASCADIES EAST
- CASCADIES WEST
- COAST RANGE
- KLAMATH MOUNTAINS

No warranty is made by the Bureau of Land Management as to the accuracy, reliability, or completeness of these data for individual use or aggregate use with other data. The original data was compiled from various sources. Spatial information may not meet National Map Accuracy Standards. This product was developed through digital means and may be updated without notification.



Map 2 Middle Fork Cow Creek Sixth-field Watersheds



R8W

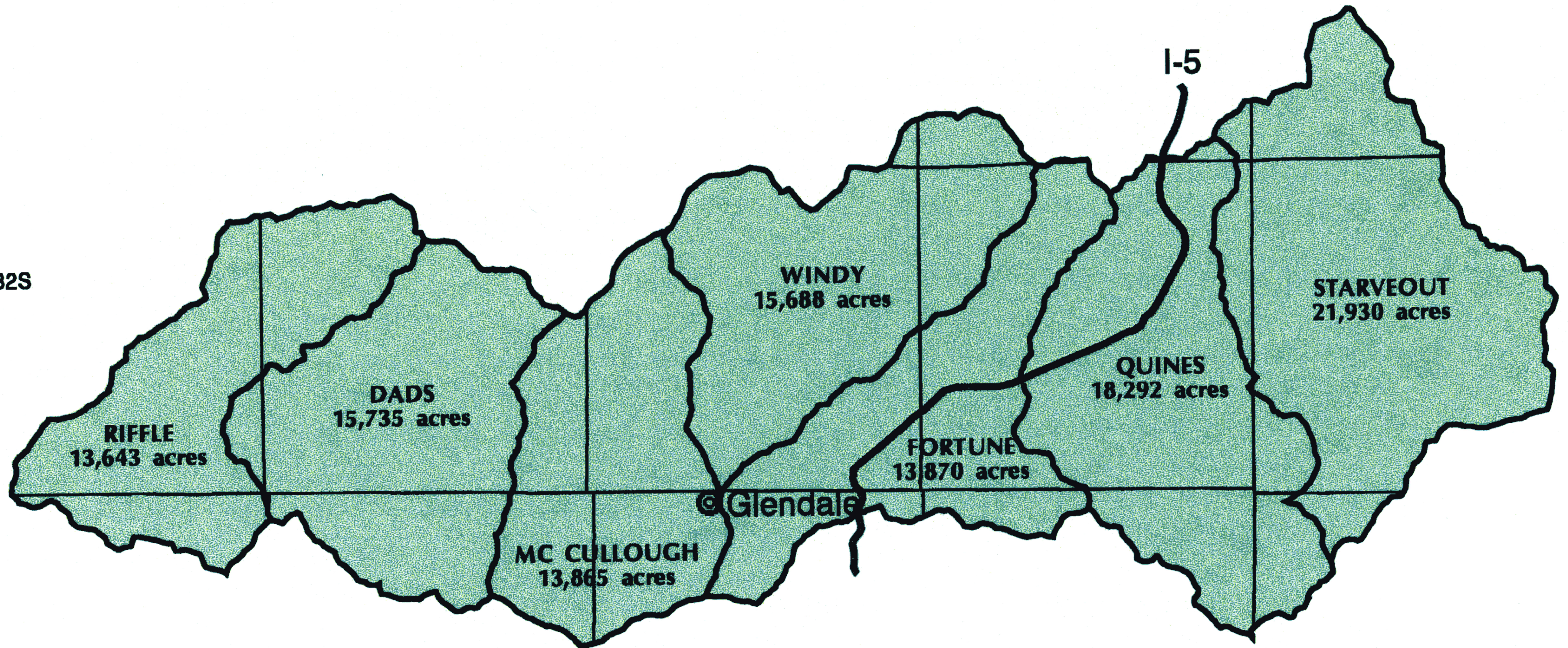
R7W

R6W

R5W

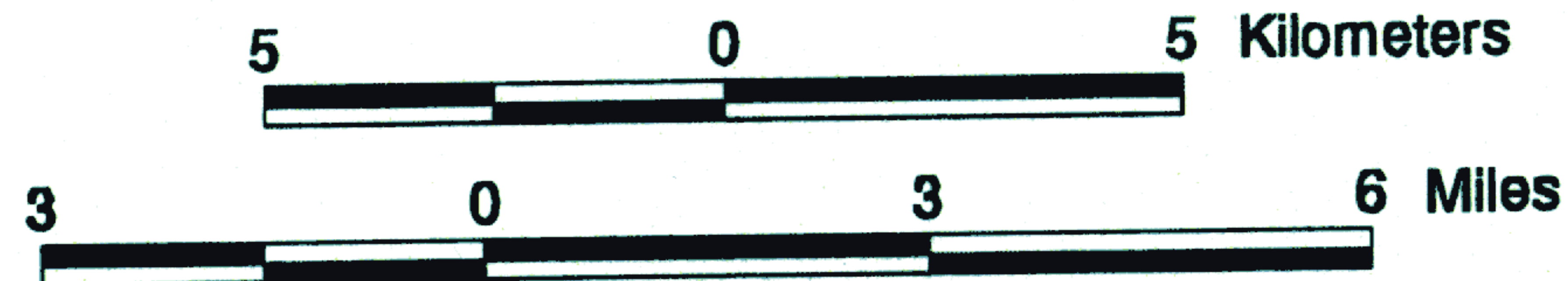
R4W

T32S



© Glendale

SCALE



LEGEND

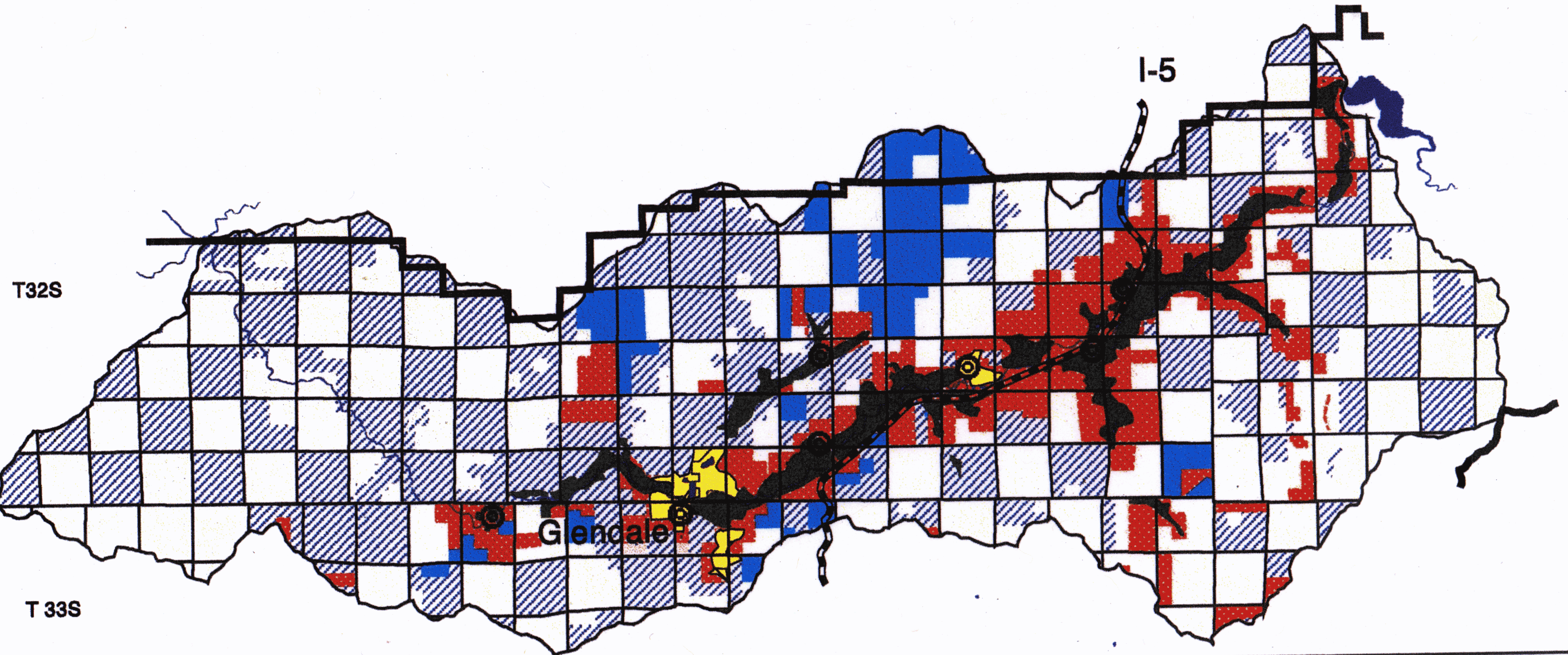
- Cities and Towns
- Interstate 5
- Township Lines
- Sixth-field Boundaries

No warranty is made by the Bureau of Land Management as to the accuracy, reliability, or completeness of these data for individual use or aggregate use with other data. The original data was compiled from various sources. Spatial information may not meet National Map Accuracy Standards. This product was developed through digital means and may be updated without notification.

Map 3 Middle Cow Creek Ownerships

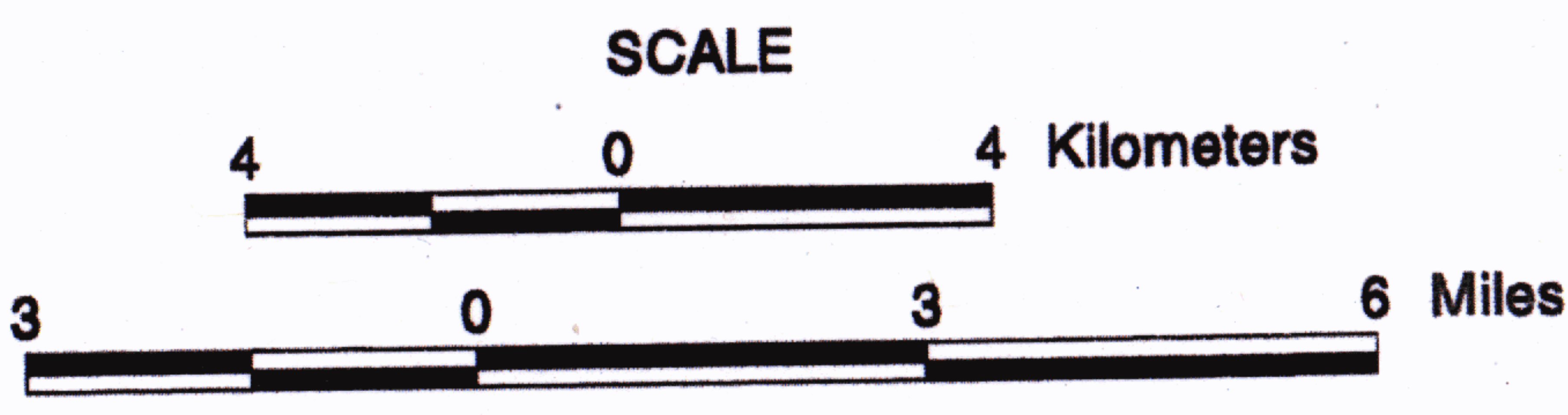


R8W R7W R6W R5W R4W



T32S

T 33S

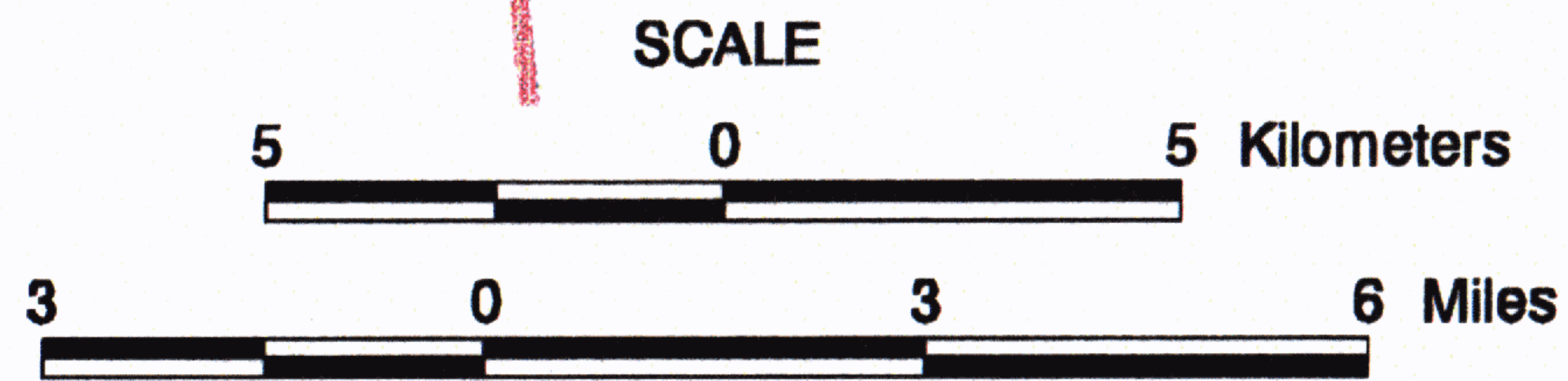
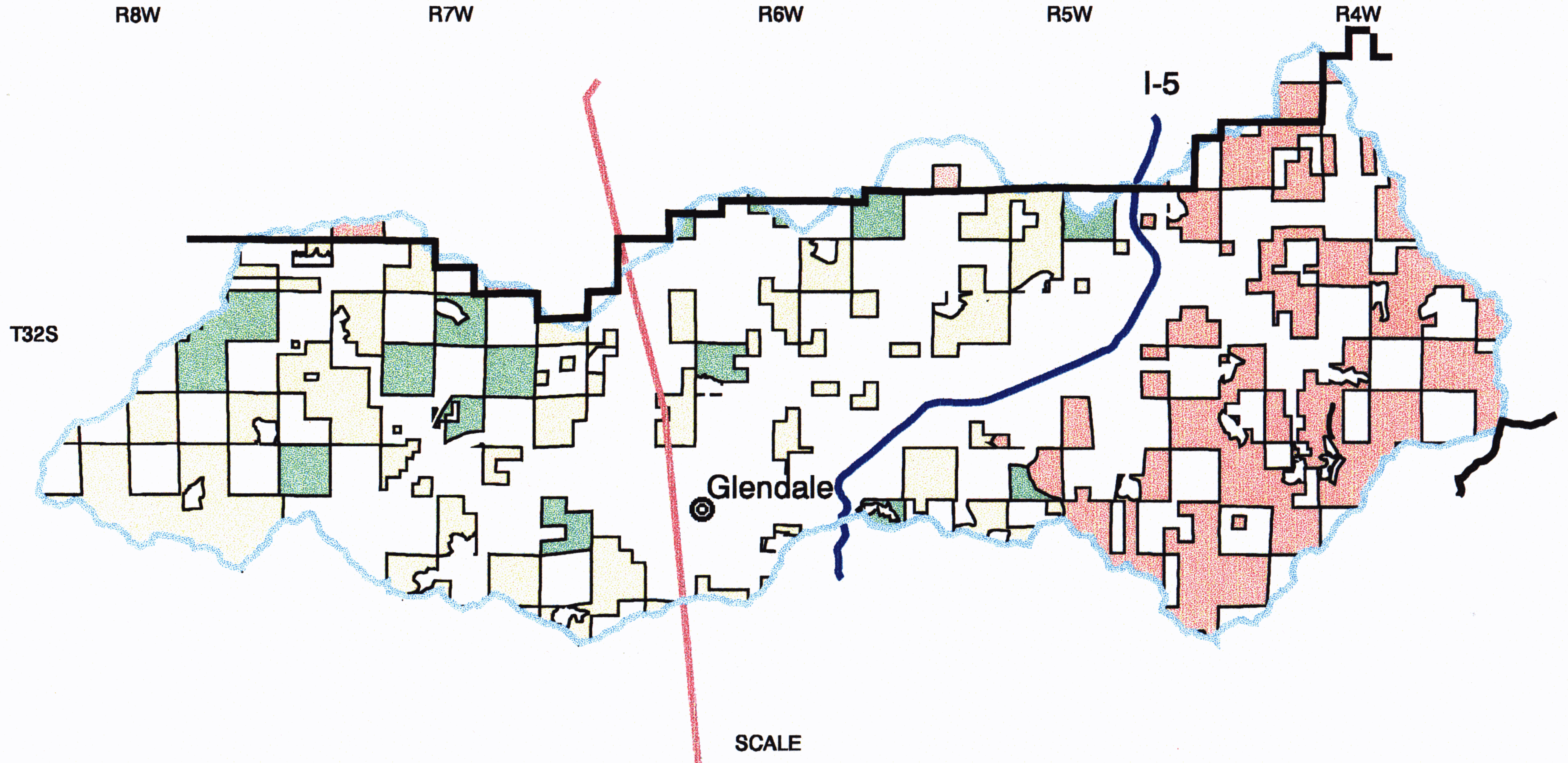


LEGEND

- District Boundary
- Section Lines
- Cities and Towns
- Interstate 5
- Lakes
- Primary Landuse Category**
- Residential
- Agricultural
- Ownerships**
- BLM
- Local Government
- Private Industry
- Private Non-Industry
- State

No warranty is made by the Bureau of Land Management as to the accuracy, reliability, or completeness of these data for individual use or aggregate use with other data. The original data was compiled from various sources. Spatial information may not meet National Map Accuracy Standards. This product was developed through digital means and may be updated without notification.

Map 4 Middle Fork Cow Creek Land Use Allocations

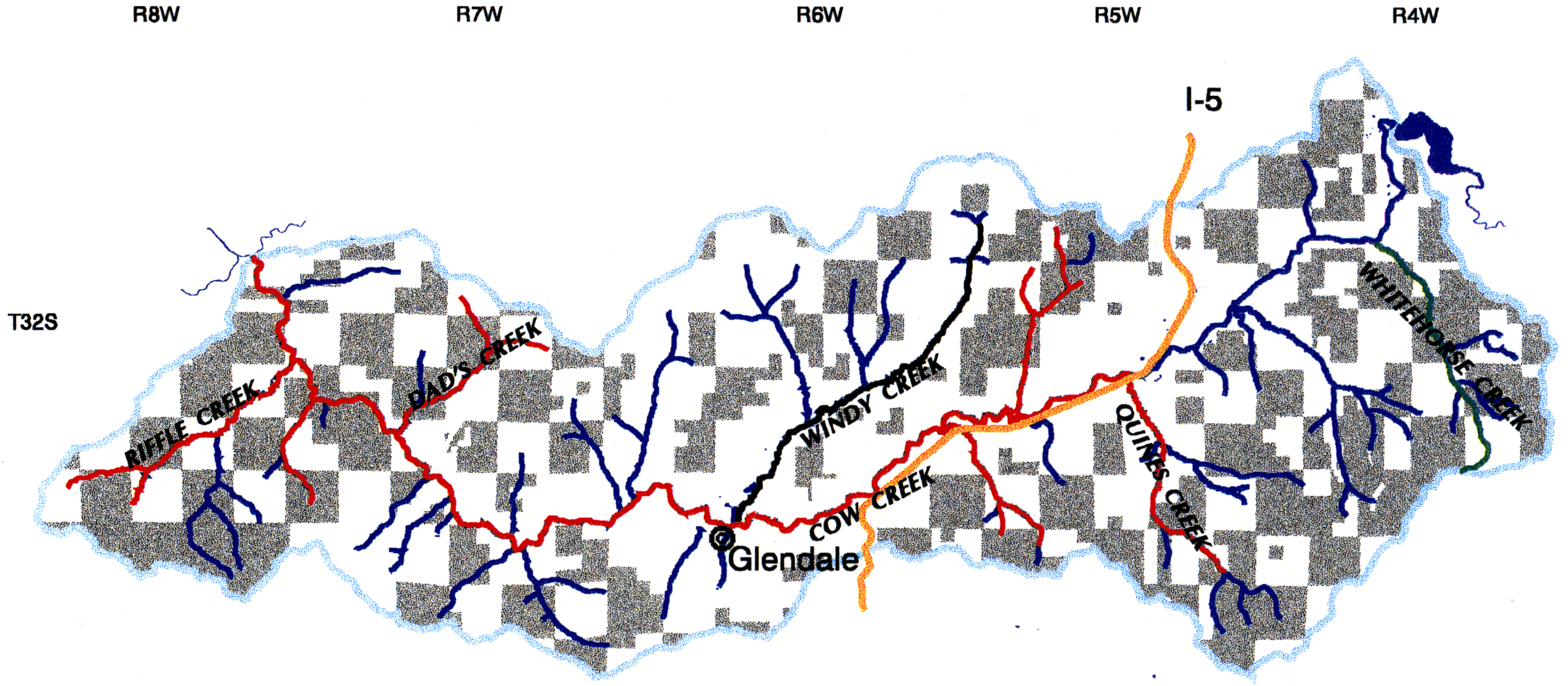


LEGEND

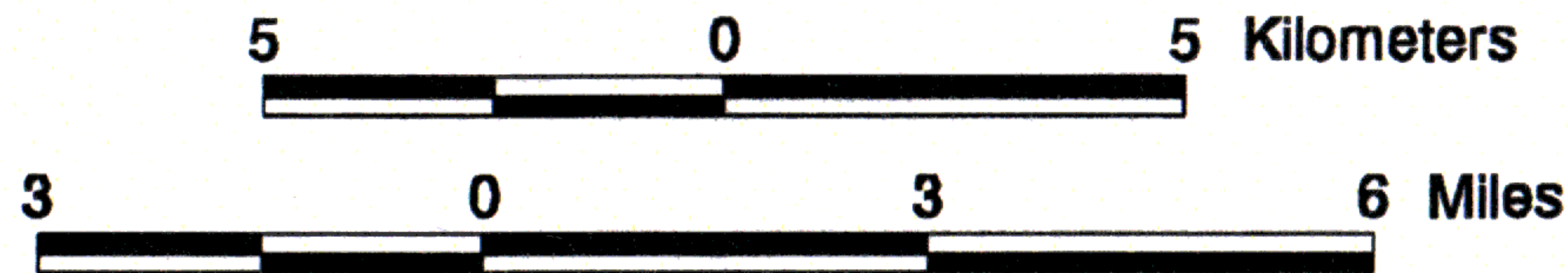
- Resource Area Boundary
- Watershed Boundary
- Interstate 5
- Cities and Towns
- Marbled Murrelet 50 Mile Zone Line
- CON
- GFMA
- LSR
- NGFMA

No warranty is made by the Bureau of Land Management as to the accuracy, reliability, or completeness of these data for individual use or aggregate use with other data. The original data was compiled from various sources. Spatial information may not meet National Map Accuracy Standards. This product was developed through digital means and may be updated without notification.

Map 5 Middle Fork Cow Creek Water Quality Limited Streams



SCALE



LEGEND

- Interstate 5
- Cities and Towns
- Water Quality Limited Streams**
- HAB
- TEMP
- TEMP-HAB
- Major Streams
- Watershed Boundary
- Lakes
- BLM Ownership

No warranty is made by the Bureau of Land Management as to the accuracy, reliability, or completeness of these data for individual use or aggregate use with other data. The original data was compiled from various sources. Spatial information may not meet National Map Accuracy Standards. This product was developed through digital means and may be updated without notification.

Map 6 Middle Cow Creek Road Surface Types



R8W

R7W

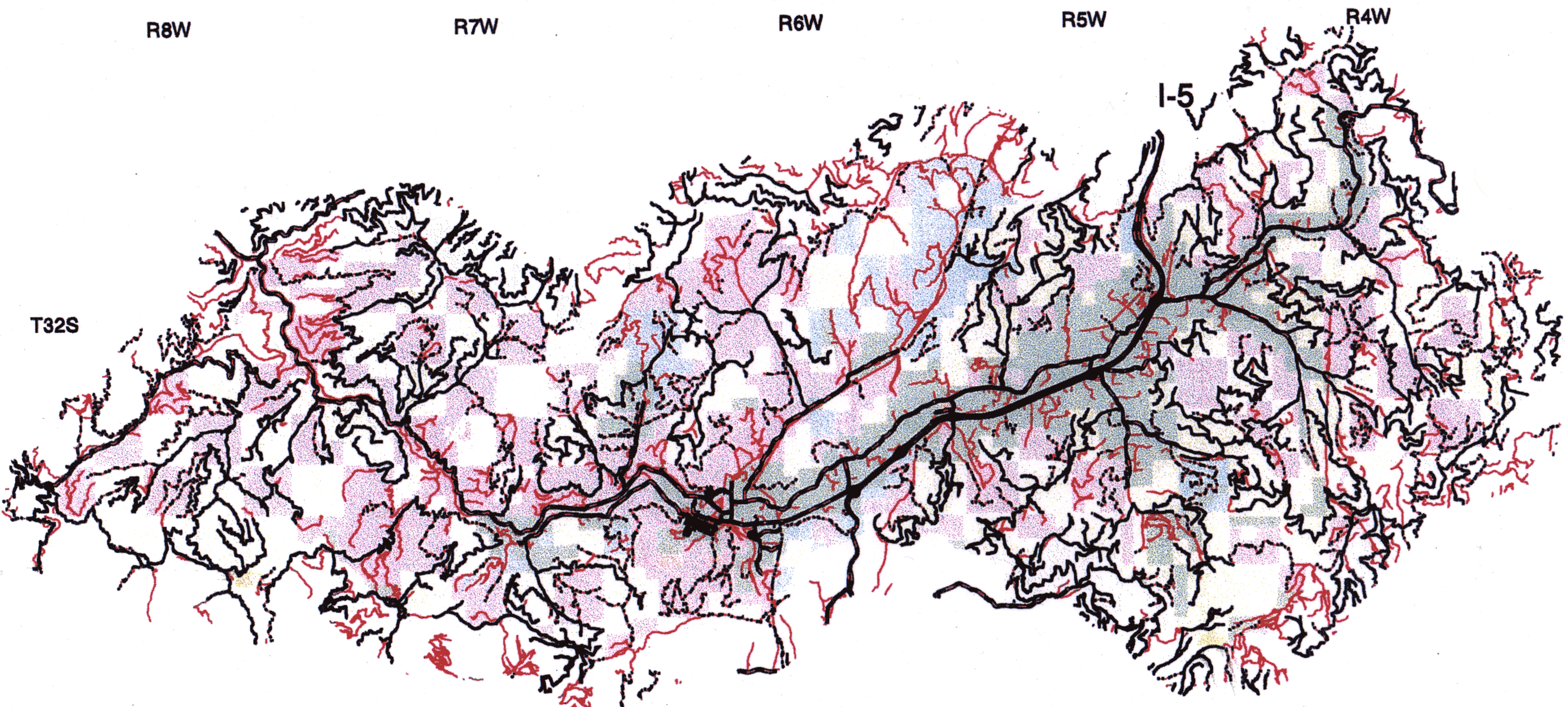
R6W

R5W

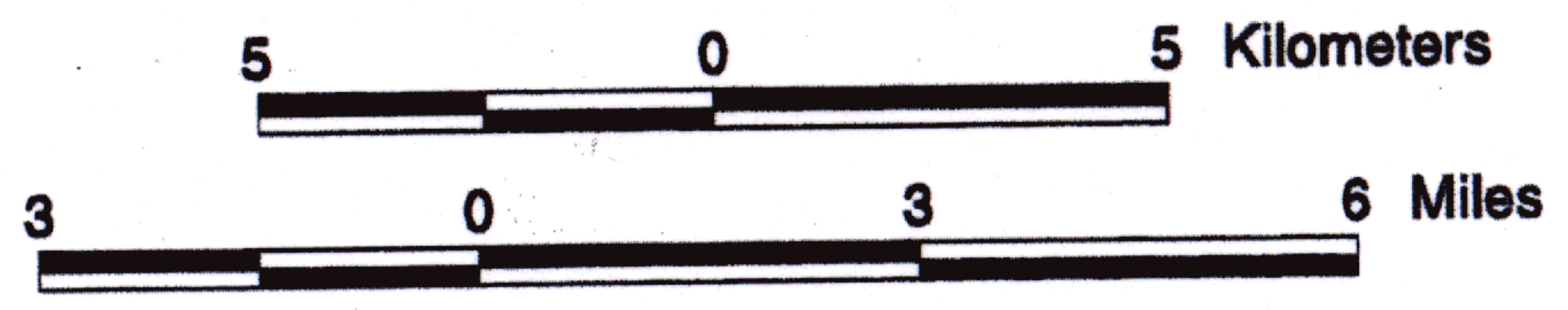
R4W

T32S

I-5



SCALE



LEGEND

- Paved Roads
- Rocked Roads
- Natural Surface Roads
- Unclassified Roads
- Ownerships**
- BLM
- Local Government
- Private Industry
- Private Non-Industry
- State

No warranty is made by the Bureau of Land Management as to the accuracy, reliability, or completeness of these data for individual use or aggregate use with other data. The original data was compiled from various sources. Spatial information may not meet National Map Accuracy Standards. This product was developed through digital means and may be updated without notification.

Map 7 Middle Fork Cow Creek Road Closure Status



R8W

R7W

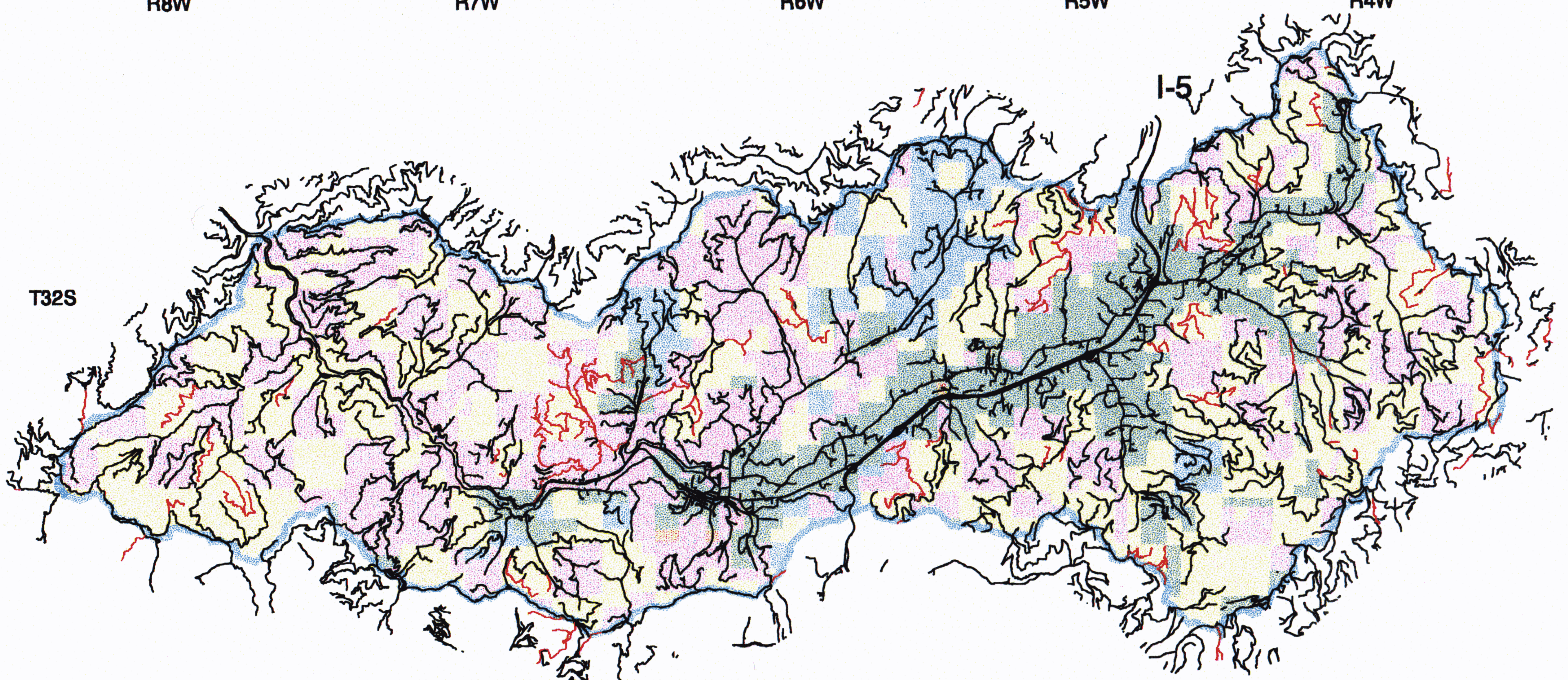
R6W

R5W

R4W

T32S

I-5



SCALE

5 0 5 Kilometers

3 0 3 6 Miles

LEGEND

- Closed Roads
- Roads
- Watershed Boundary
- Ownerships**
- BLM
- Local Government
- Private Industry
- Private Non-Industry
- State

No warranty is made by the Bureau of Land Management as to the accuracy, reliability, or completeness of these data for individual use or aggregate use with other data. The original data was compiled from various sources. Spatial information may not meet National Map Accuracy Standards. This product was developed through digital means and may be updated without notification.

Map 8 Middle Fork Cow Creek Unstable Soil Areas



R8W

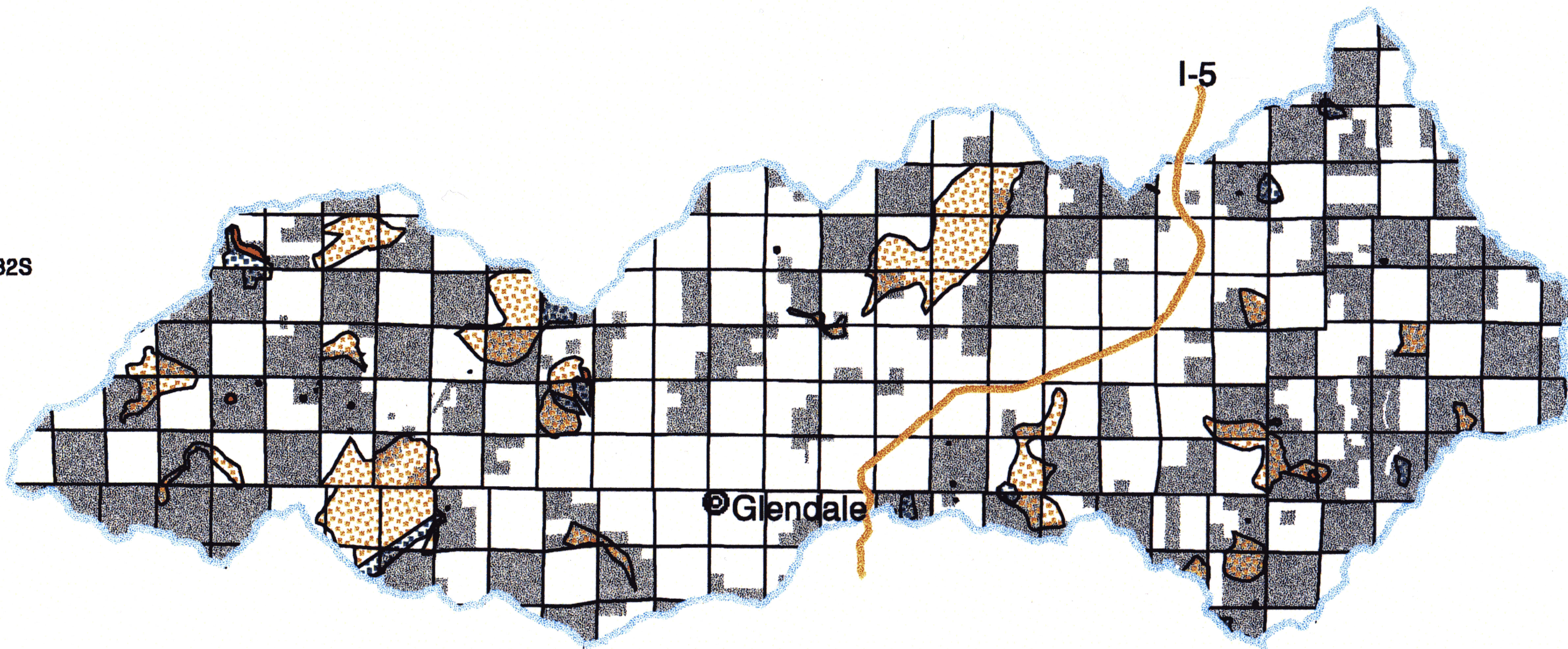
R7W

R6W

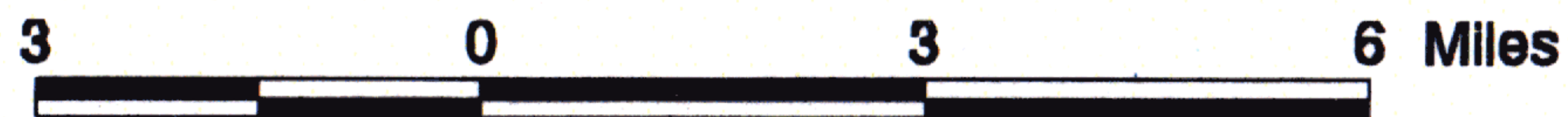
R5W

R4W

T32S



SCALE



LEGEND

- Interstate 5
- Cities and Towns
- Watershed Boundary
- Section Lines
- Unstable Soil Categories**
- Ancient Slump Blocks
- Historic Erosion Potential
- Slides
- BLM Ownership

No warranty is made by the Bureau of Land Management as to the accuracy, reliability, or completeness of these data for individual use or aggregate use with other data. The original data was compiled from various sources. Spatial information may not meet National Map Accuracy Standards. This product was developed through digital means and may be updated without notification.

Map 9 Middle Fork Cow Creek Fish Distribution Map



R8W

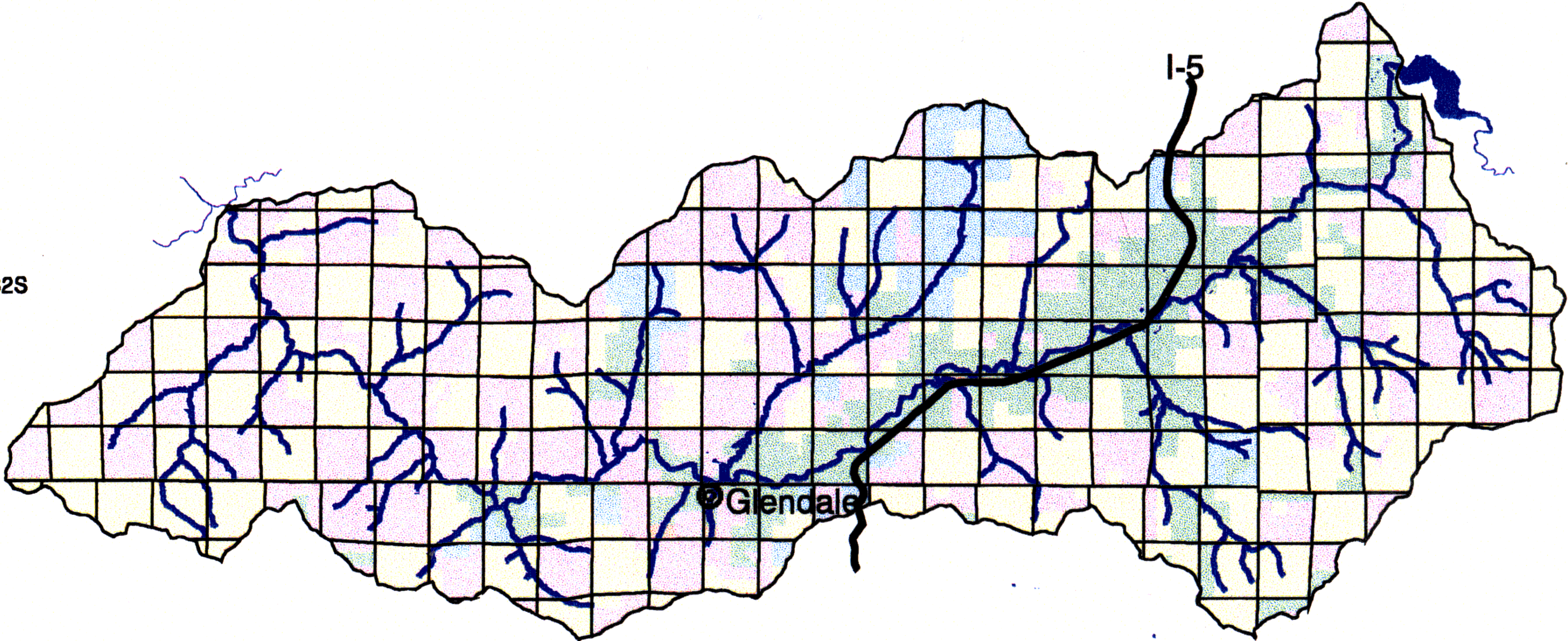
R7W

R6W

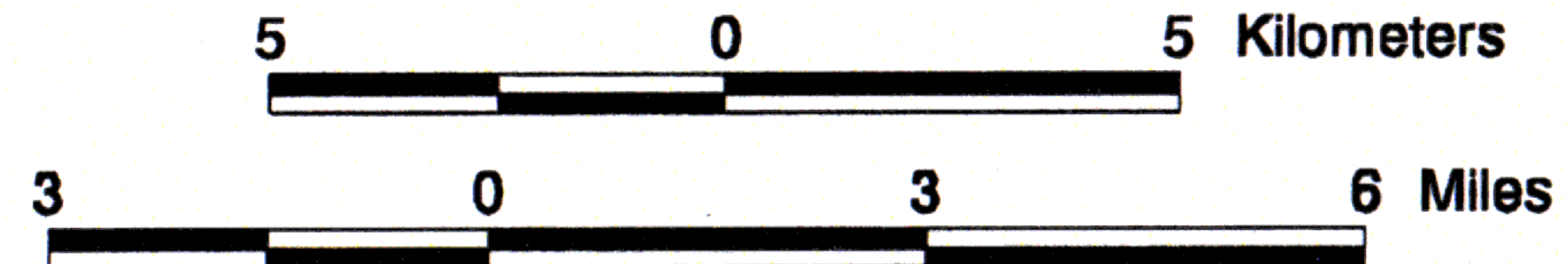
R5W

R4W

T32S



SCALE



LEGEND

- Interstate 5
- Section Lines
- Cities and Towns
- Fish Reaches
- Lakes
- Ownerships**
- BLM
- Local Government
- Private Industry
- Private Non-Industry
- State

No warranty is made by the Bureau of Land Management as to the accuracy, reliability, or completeness of these data for individual use or aggregate use with other data. The original data was compiled from various sources. Spatial information may not meet National Map Accuracy Standards. This product was developed through digital means and may be updated without notification.

Map 10 Middle Fork Cow Creek Plant Groups



R8W

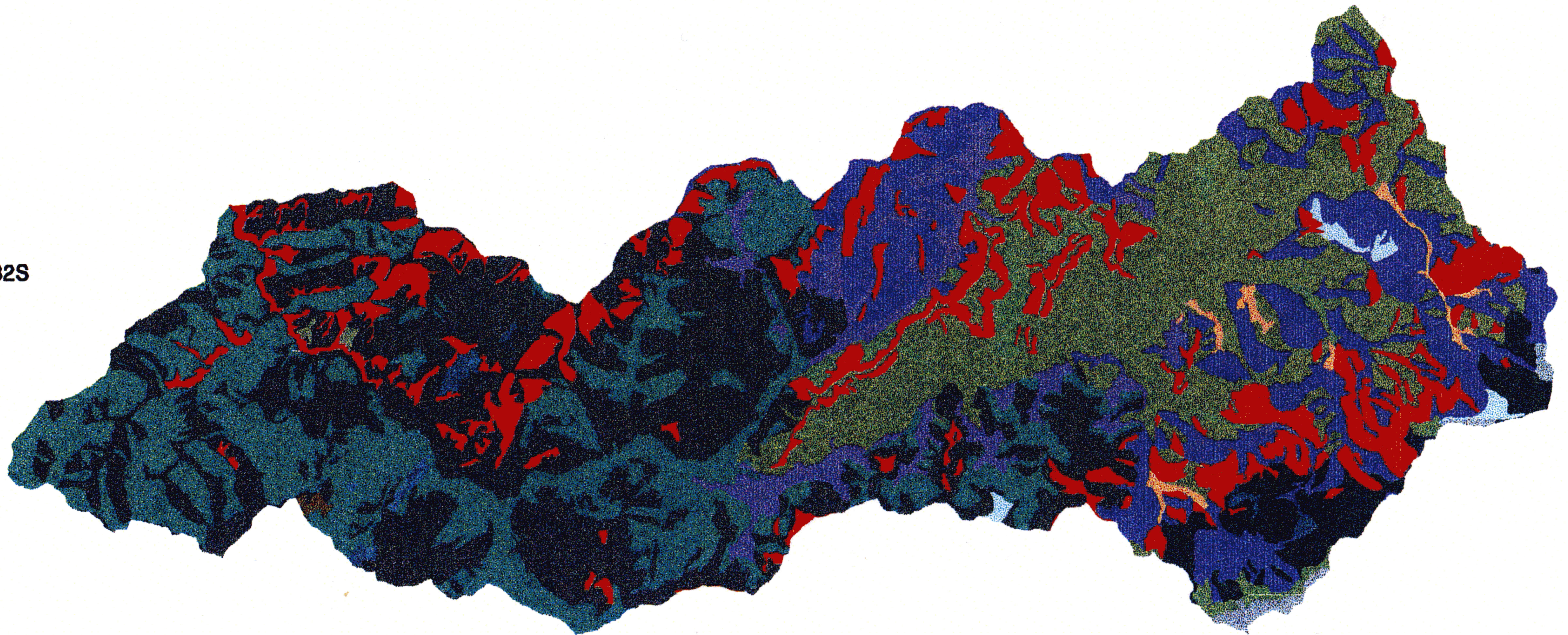
R7W

R6W

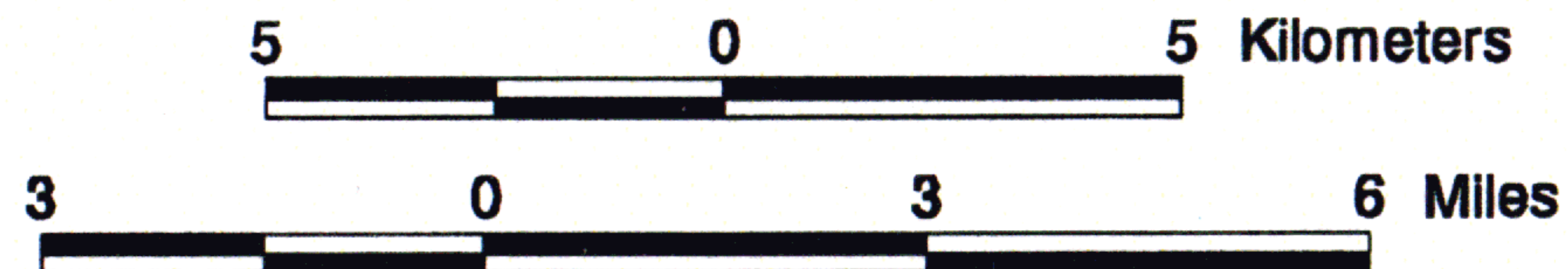
R5W

R4W

T32S



SCALE



LEGEND

- Plant Groups**
- DOUGLAS FIR ON ULTRAMAFICS
 - DOUGLAS FIR WITH SALAL OR SWORD FERN
 - DOUGLAS FIR, CANYON LIVE OAK
 - DOUGLAS FIR, SHRUB
 - DOUGLAS FIR, VINE MAPLE
 - JEFFREY PINE, GRASS
 - JEFFREY PINE, INCENSE CEDAR
 - MANZANITA
 - OREGON WHITE OAK, DOUGLAS FIR
 - TANOAK ON ULTRAMAFICS
 - TANOAK WITH DOUGLAS FIR, DRY
 - TANOAK WITH DOUGLAS FIR, MOIST
 - TANOAK WITH WHITE FIR
 - WESTERN HEMLOCK, SALAL
 - WHITE FIR, DRY
 - WHITE FIR, HIGH ELEVATION
 - WHITE FIR, MOIST

No warranty is made by the Bureau of Land Management as to the accuracy, reliability, or completeness of these data for individual use or aggregate use with other data. The original data was compiled from various sources. Spatial information may not meet National Map Accuracy Standards. This product was developed through digital means and may be updated without notification.

Map 11

Middle Fork Cow Creek

Seral Stages on BLM Land



R8W

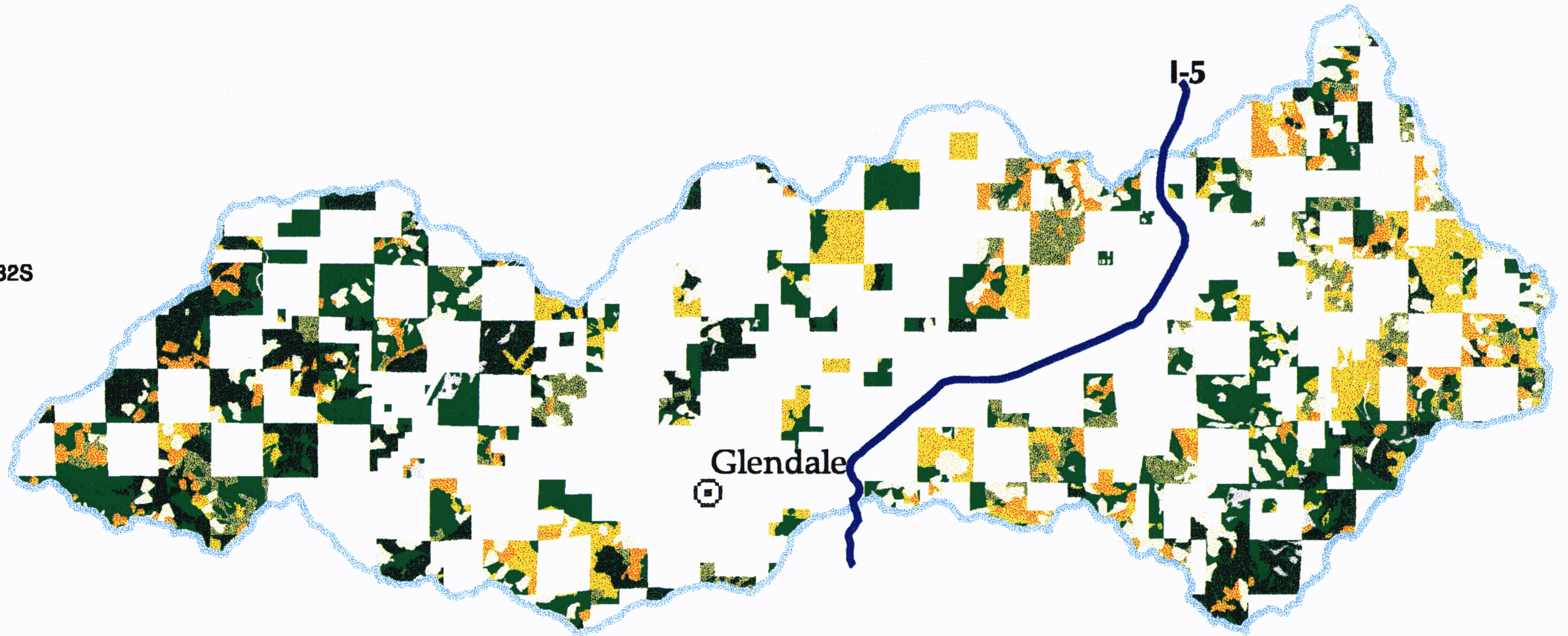
R7W

R6W

R5W

R4W

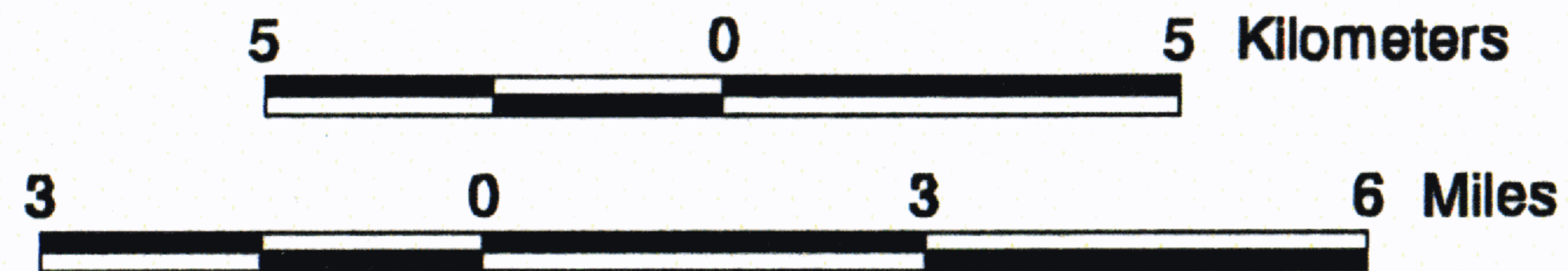
T32S



Glendale

I-5

SCALE



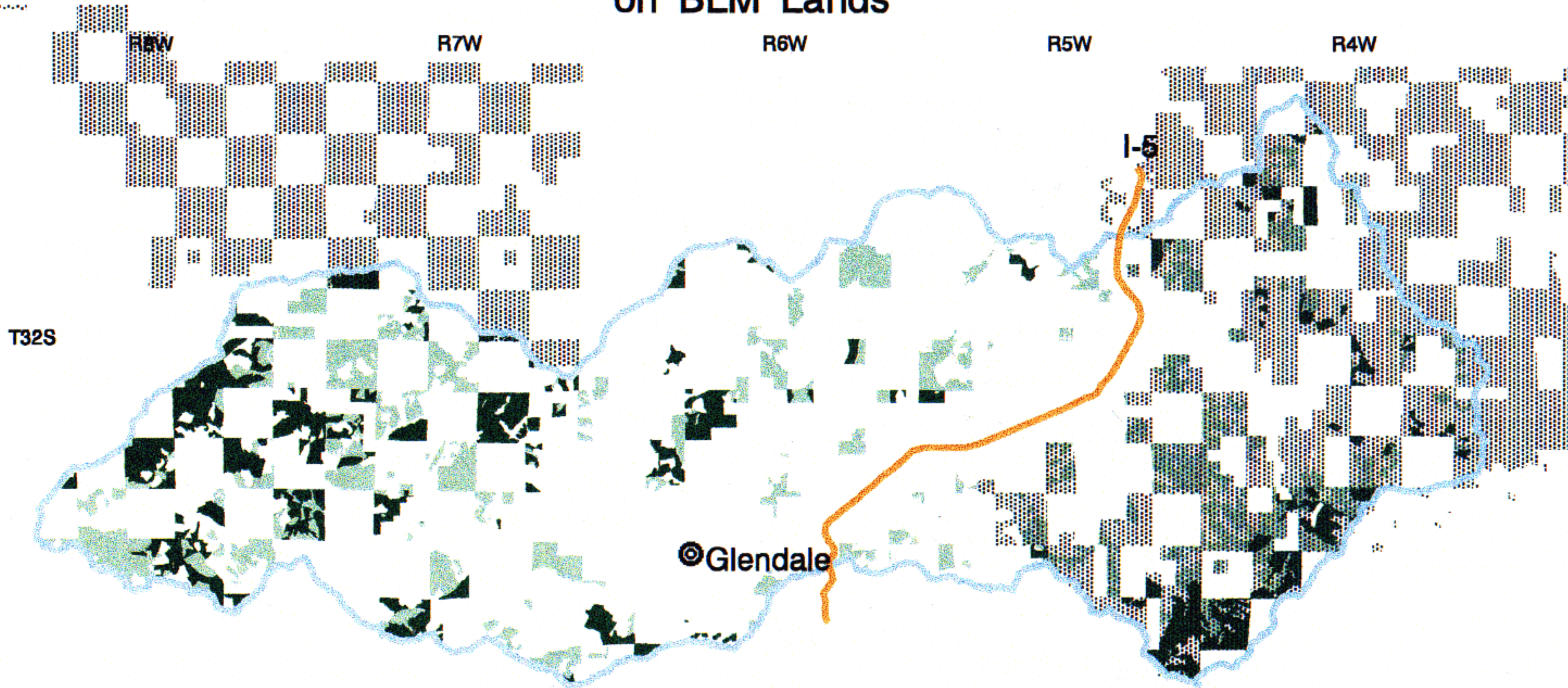
LEGEND

- I-5
- Watershed Boundary
- Cities and Towns
- Vegetation Classification**
- Non-Forest
- Early Seral (0-20 yrs.)
- Mid Seral (21-40 yrs.)
- Closed Small Poles (41-80 yrs.)
- Mature (81-200 yrs.)
- Old-Growth (200 yrs. +)
- Modified Stands (80 yrs.+)

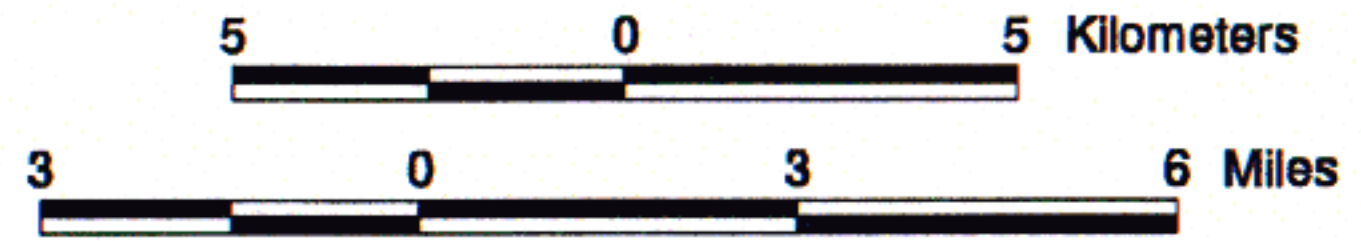
No warranty is made by the Bureau of Land Management as to the accuracy, reliability, or completeness of these data for individual use or aggregate use with other data. The original data was compiled from various sources. Spatial information may not meet National Map Accuracy Standards. This product was developed through digital means and may be updated without notification.

Map 12

Middle Fork Cow Creek Late-Successional Habitat on BLM Lands



SCALE



LEGEND

- Interstate 5
- Watershed Boundary
- Cities and Towns
- Late Successional Reserves
- Vegetation Classification**
- Mature Stands (81-200 yrs.)
- Old-Growth (200 yrs. +)

No warranty is made by the Bureau of Land Management as to the accuracy, reliability, or completeness of these data for individual use or aggregate use with other data. The original data was compiled from various sources. Spatial information may not meet National Map Accuracy Standards. This product was developed through digital means and may be updated without notification.

Map 13 Middle Fork Cow Creek Riparian Reserves



R8W

R7W

R6W

R5W

R4W

T32S



SCALE



LEGEND

- Interstate 5
- Cities and Towns
- Fish Bearing Stream
- Unclassified Stream
- Riparian Reserves
- Ownerships**
- BLM
- Local Government
- Private Industry
- Private Non-Industry
- State

No warranty is made by the Bureau of Land Management as to the accuracy, reliability, or completeness of these data for individual use or aggregate use with other data. The original data was compiled from various sources. Spatial information may not meet National Map Accuracy Standards. This product was developed through digital means and may be updated without notification.

Map 14 Middle Cow Creek Spotted Owl Critical Habitat Units



R8W

R7W

R6W

R5W

R4W

OR-62

T32S

I-5

OR-32

OR-65



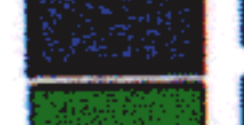


OR-64

SCALE

5 0 5 Kilometers

3 0 3 6 Miles

LEGEND

-  I-5
-  Critical Habitat Unit - spotted owls
-  LSR
-  Lakes
-  BLM Land

No warranty is made by the Bureau of Land Management as to the accuracy, reliability, or completeness of these data for individual use or aggregate use with other data. The original data was compiled from various sources. Spatial information may not meet National Map Accuracy Standards. This product was developed through digital means and may be updated without notification.

Map 15 Middle Cow Creek GFMA Lands Outside Reserves



R8W

R7W

R6W

R5W

R4W

T32S

I-5

Glendale

SCALE

5 0 5 Kilometers

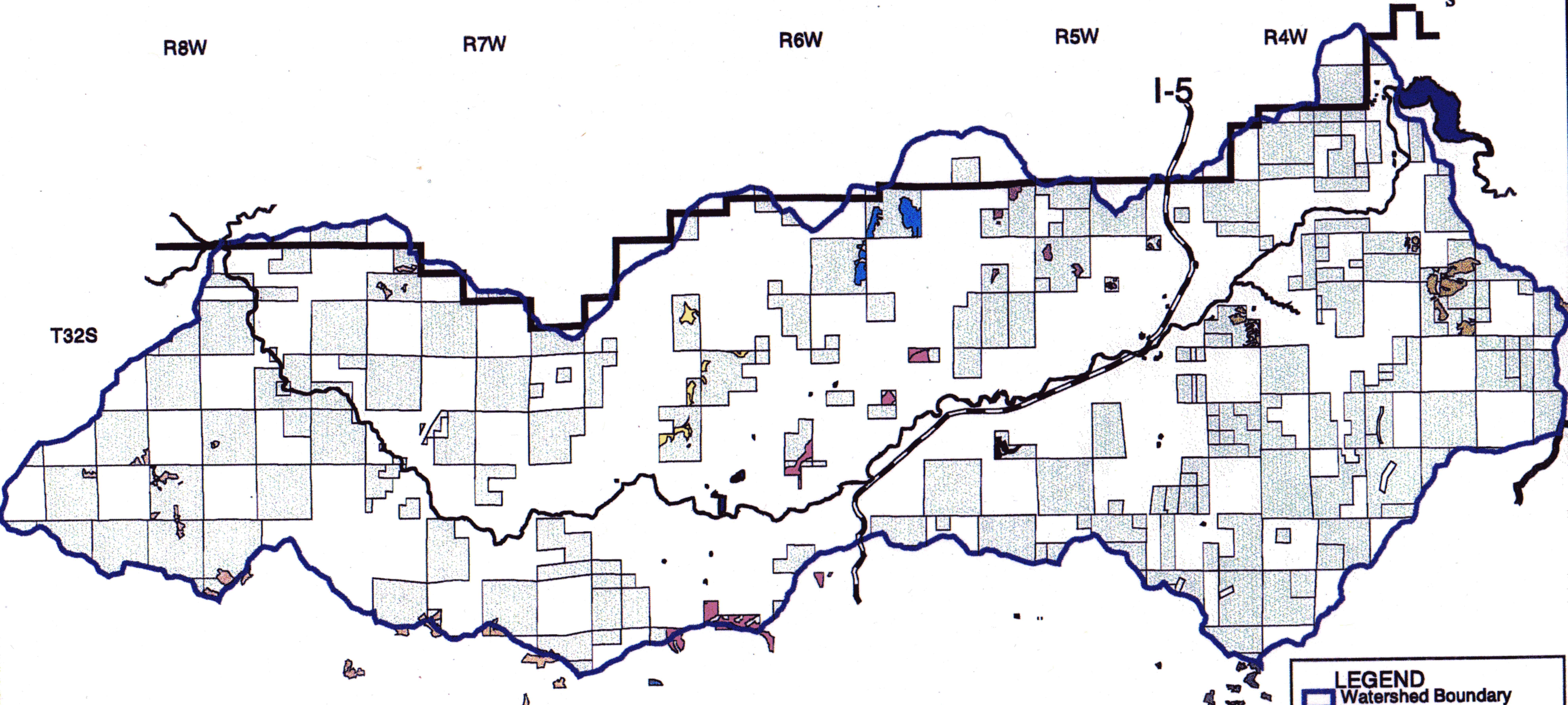
3 0 3 6 Miles

LEGEND

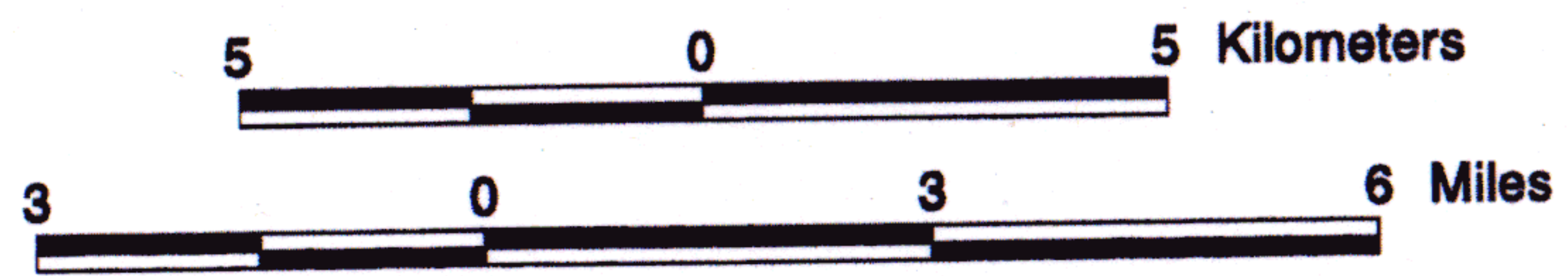
- I-5
- Lakes
- Watershed Boundary
- GFMA Outside Reserves**
- 0
- Commercial Thin
- Mature
- Old Growth
- Modified Older
- Connectivity Blocks
- Resource Area Boundary
- BLM Land

No warranty is made by the Bureau of Land Management as to the accuracy, reliability, or completeness of these data for individual use or aggregate use with other data. The original data was compiled from various sources. Spatial information may not meet National Map Accuracy Standards. This product was developed through digital means and may be updated without notification.

Map 16 Middle Cow Creek Recent Timber Sales



SCALE



LEGEND

- Watershed Boundary
- Recent Timber Sales**
- BONNIE AND SLYDE
- HIGH FIVE
- LOST FORTUNE
- LOW FIVE
- MCCLAWSON
- MCCOLLUM
- PERKINS FOLLY
- POINTLESS FIR
- POOR ANGORA
- SERPENTS GRAVE
- WILDCAT THIN
- I-5 Resource Area Boundary
- Lakes
- BLM Land

No warranty is made by the Bureau of Land Management as to the accuracy, reliability, or completeness of these data for individual use or aggregate use with other data. The original data was compiled from various sources. Spatial information may not meet National Map Accuracy Standards. This product was developed through digital means and may be updated without notification.

Note: Perkins Folly and Poor Angora have not been sold, as of October, 1999.

Map 17 Middle Cow Creek Potential Sensitive Areas



R8W

R7W

R6W

R5W

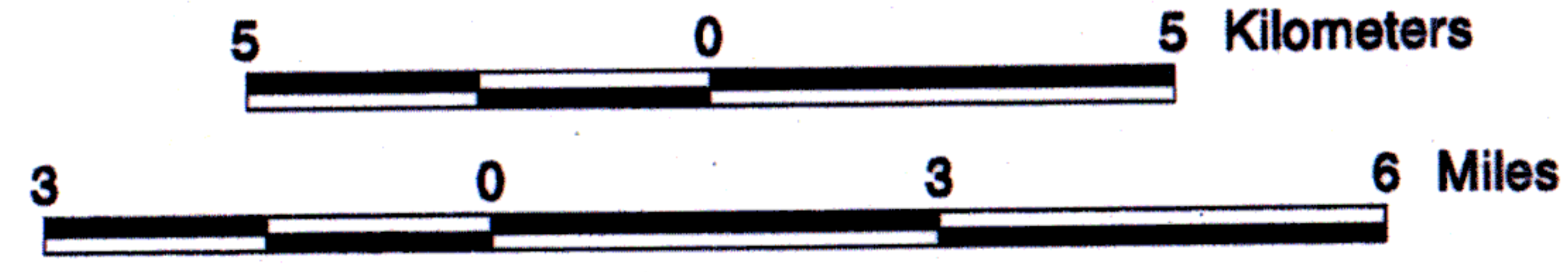
R4W

T32S

I-5

Glendale

SCALE



LEGEND

- Potential Sensitive Areas
- Watershed Boundary
- I-5
- Resource Area Boundary
- Lakes
- BLM Land

No warranty is made by the Bureau of Land Management as to the accuracy, reliability, or completeness of these data for individual use or aggregate use with other data. The original data was compiled from various sources. Spatial information may not meet National Map Accuracy Standards. This product was developed through digital means and may be updated without notification.

Map 18 Middle Cow Creek Long-Term Landscape Design



R8W

R7W

R6W

R5W

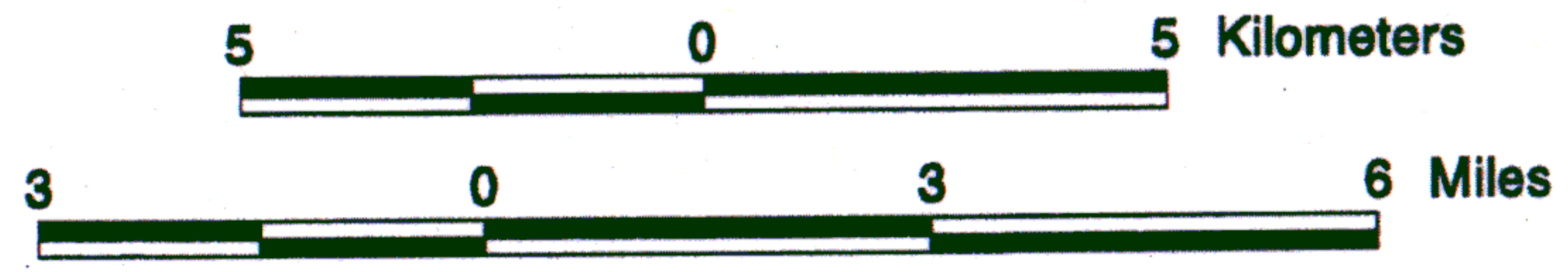
R4W

T32S

I-5

Glendale

SCALE

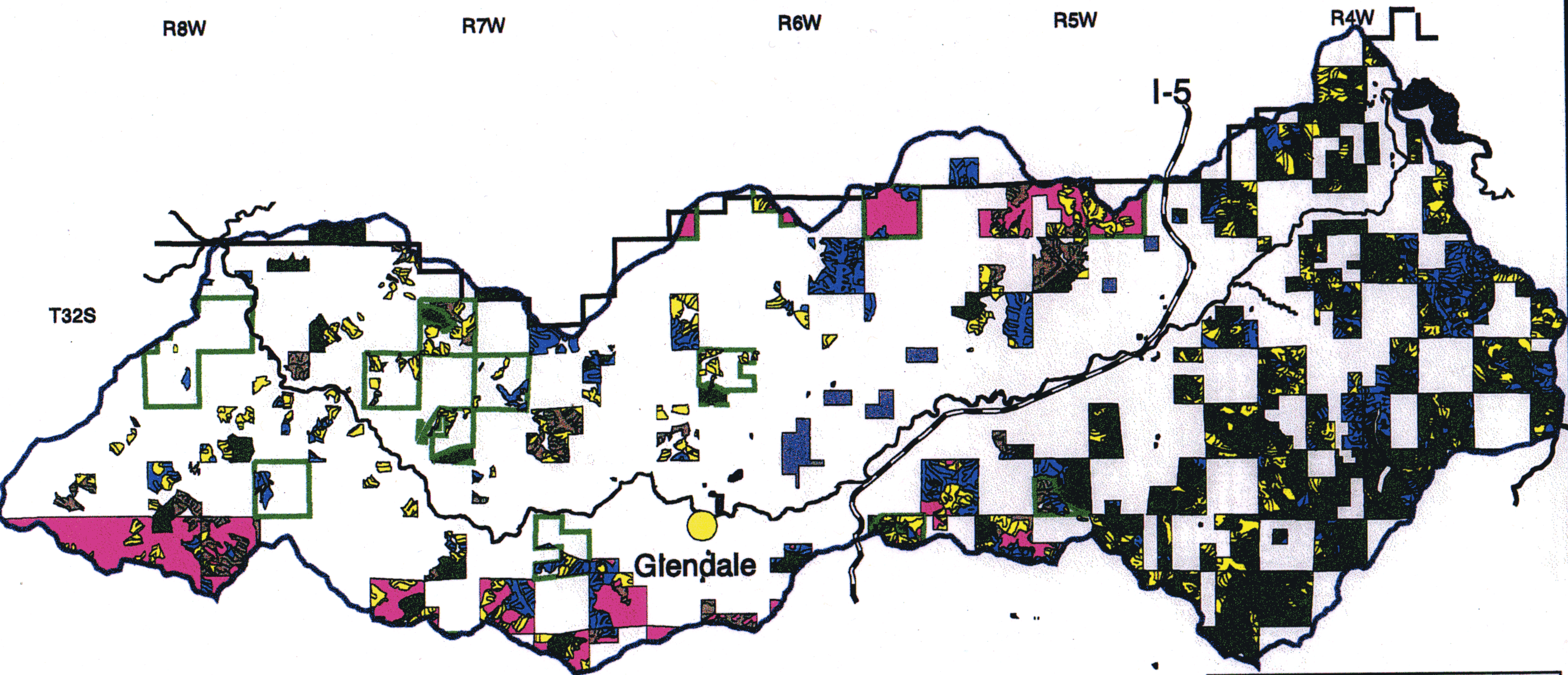


LEGEND

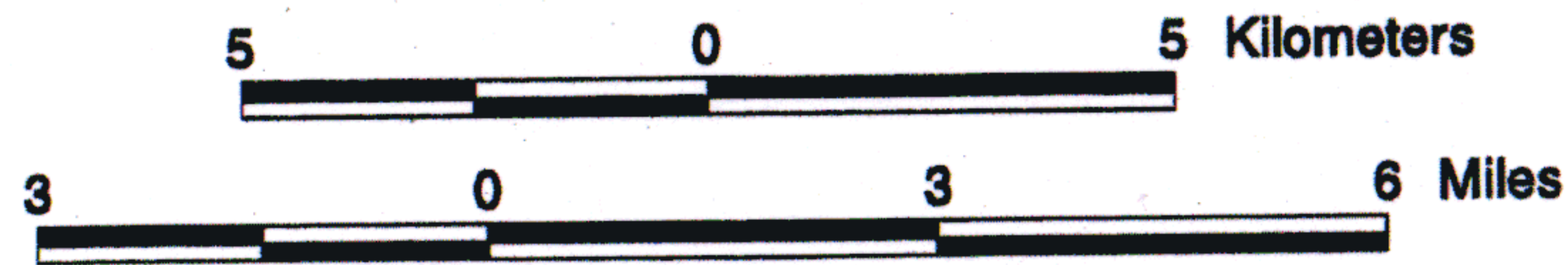
- I-5
- Lakes
- Resource Area Boundary
- Watershed Boundary
- Connectivity Blocks
- Mc_ag.shp
- Mc_resident.shp
- Non-Federal Lands**
- Private Industry
- Private Non-Ind.
- Oregon State
- Riparian Reserves
- GFMA with Connectivity
- Proposed BLM Exchange Lands
- BLM Land Allocations**
- ACEC
- Connectivity Blocks
- GFMA
- LSR
- GFMA
- Non-Federal
- Rec. Sites
- Owl Cores

No warranty is made by the Bureau of Land Management as to the accuracy, reliability, or completeness of these data for individual use or aggregate use with other data. The original data was compiled from various sources. Spatial information may not meet National Map Accuracy Standards. This product was developed through digital means and may be updated without notification.

Map 19 Middle Cow Creek Short-Term Recommendations



SCALE

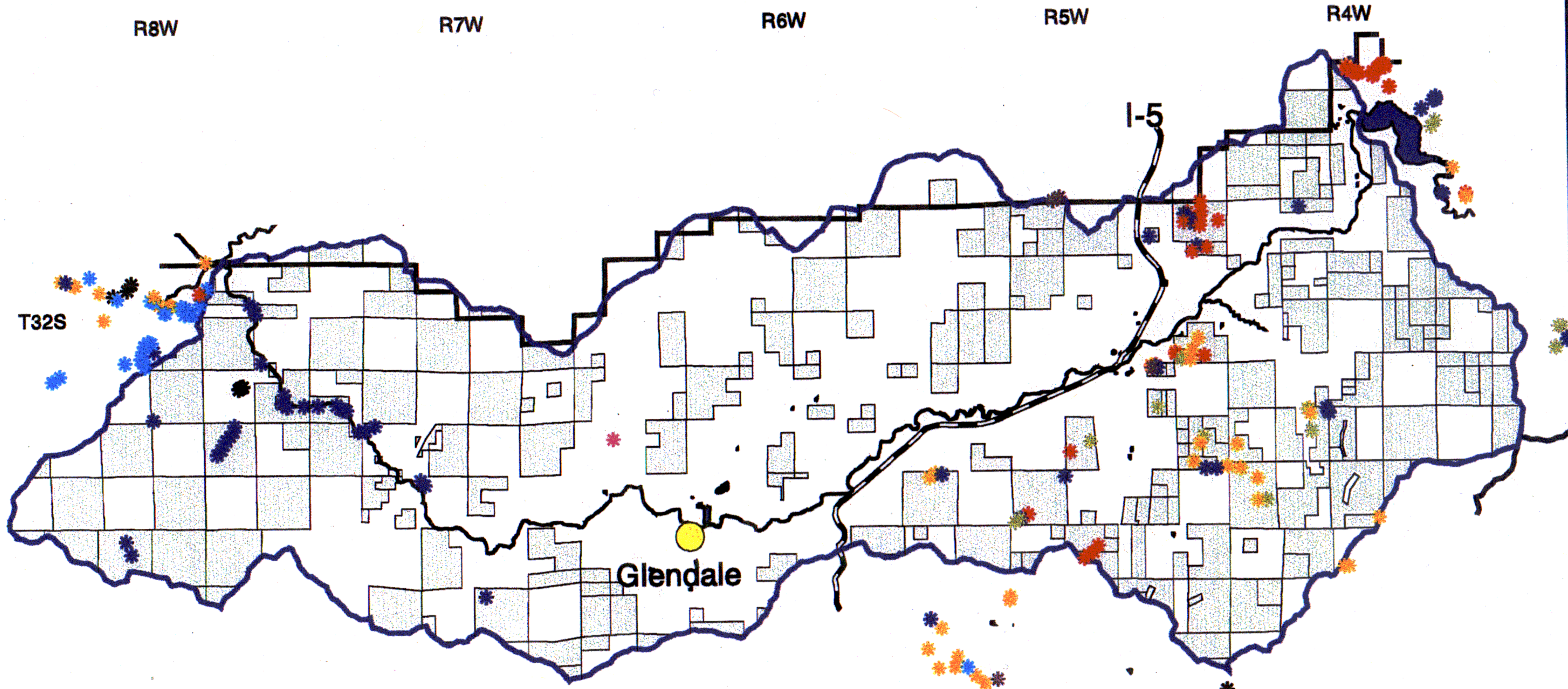


LEGEND

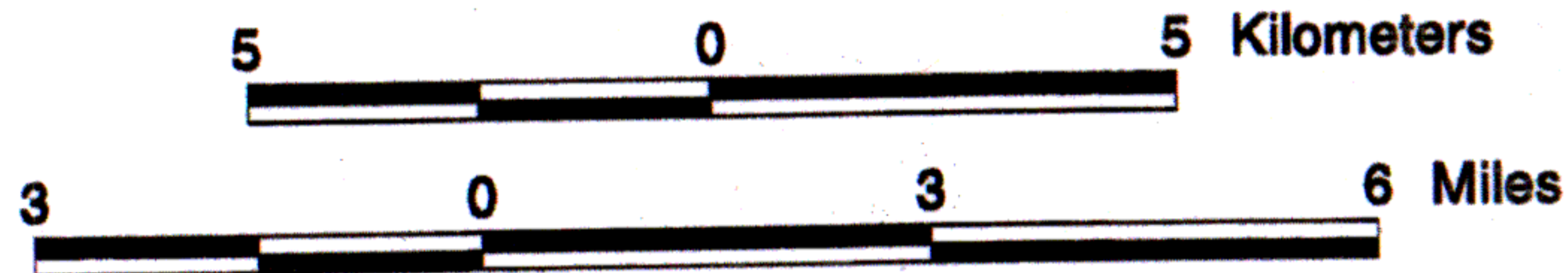
- I-5
- Lakes
- Watershed Boundary
- Proposed BLM Exchange Lands
- Young Plantations
- Commercial Thin
- Connectivity Blocks
- LSR and Owl Cores
- Modified Older Stands
- GFMA with Connectivity
- Resource Area Boundary

No warranty is made by the Bureau of Land Management as to the accuracy, reliability, or completeness of these data for individual use or aggregate use with other data. The original data was compiled from various sources. Spatial information may not meet National Map Accuracy Standards. This product was developed through digital means and may be updated without notification.

Map 20 Middle Cow Creek Noxious and Invasive Weeds



SCALE



LEGEND

- Noxious/Invasive Weeds**
- CANADA THISTLE
 - GORSE
 - MEADOW KNAPWEED
 - SCOTCH BROOM
 - SKELETONWEED
 - SPANISH_BROOM
 - TANSY RAGWORT
 - YELLOW STARHISTLE
- Watershed Boundary**
- I-5 Resource Area Boundary**
- Lakes**
- BLM Land**

No warranty is made by the Bureau of Land Management as to the accuracy, reliability, or completeness of these data for individual use or aggregate use with other data. The original data was compiled from various sources. Spatial information may not meet National Map Accuracy Standards. This product was developed through digital means and may be updated without notification.