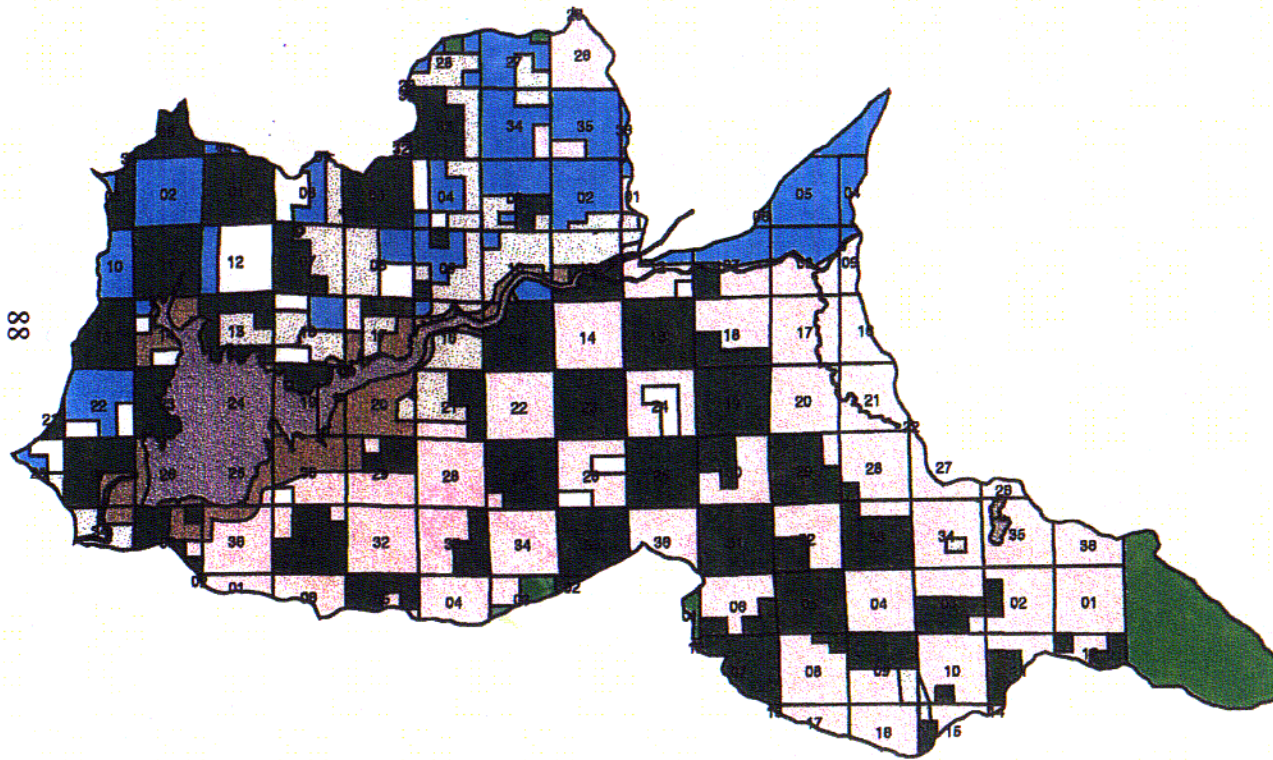


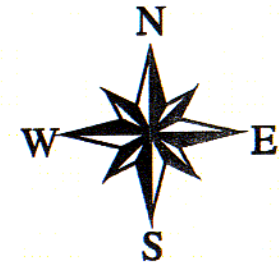
MAPS

Lost Creek Watershed Land Ownership



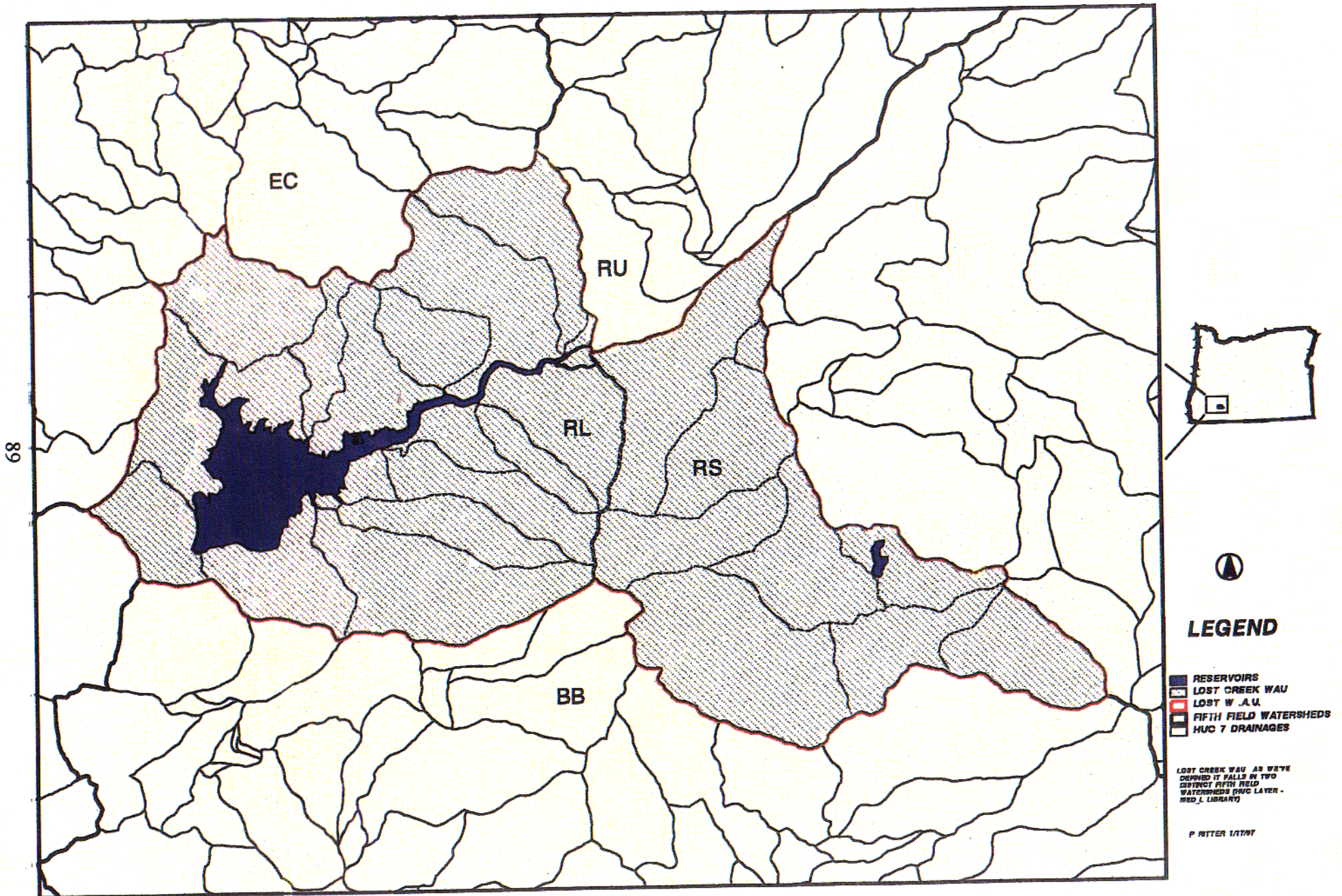
BLM - Medford District Office
 No Warranty is made by the Bureau of Land Management as to the accuracy, reliability, or completeness of these data for individual use or aggregate use with other data.

- Lostlak.shp
- Lostpls
- Lostpriv
- BCC - 7,121 Ac.
- Rogue Resources - 20,607 Ac.
- OC - 17,020 Ac.
- Other Government - 5,146 Ac.
- PD - 2,047 Ac.
- PVT - 4,887 Ac.
- USFS - 2,380 Ac.



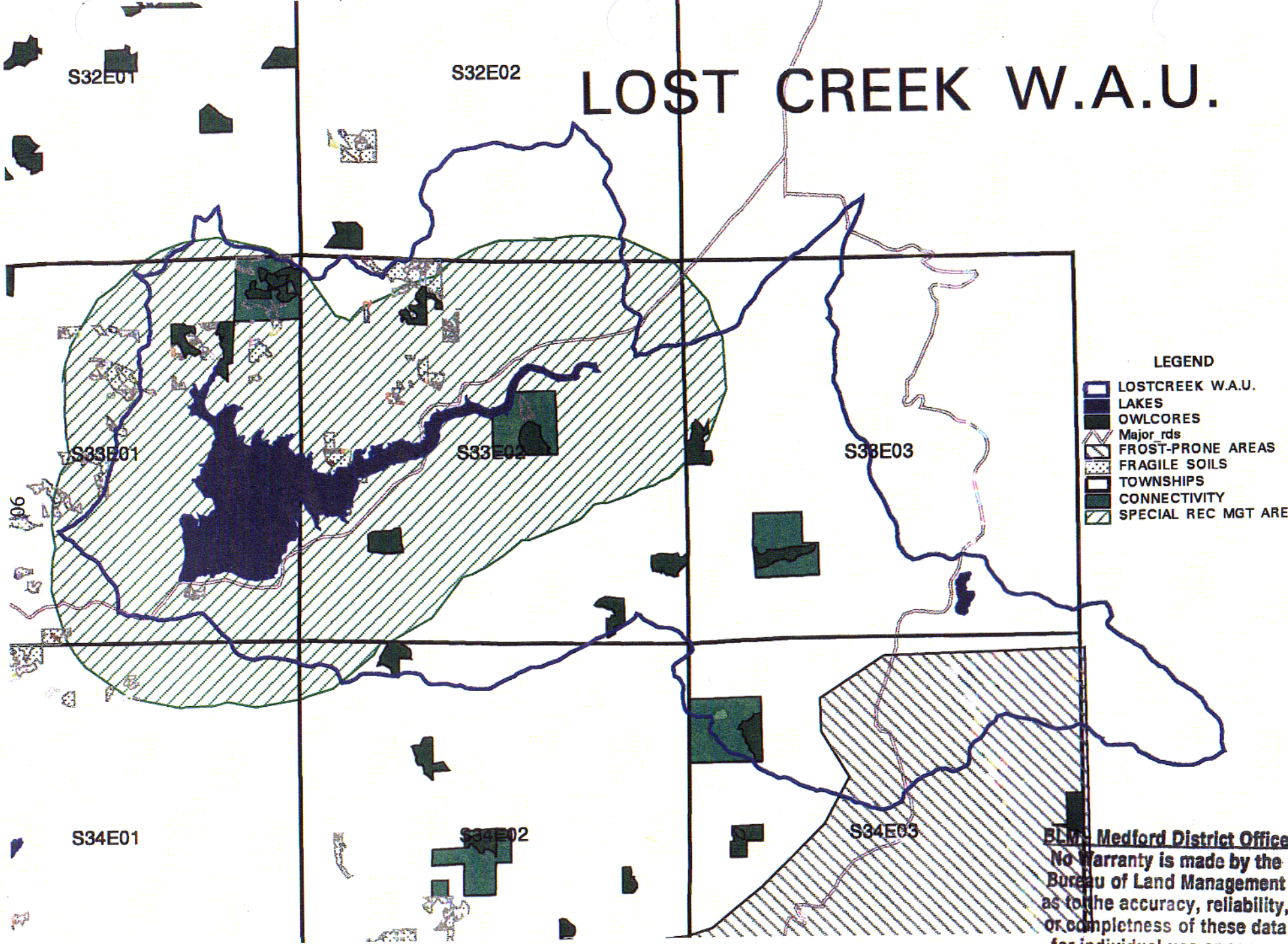
MAP 1

LOST CREEK W.A.U. AND FIFTH FIELD WATERSHEDS



MAP 2

LOST CREEK W.A.U.



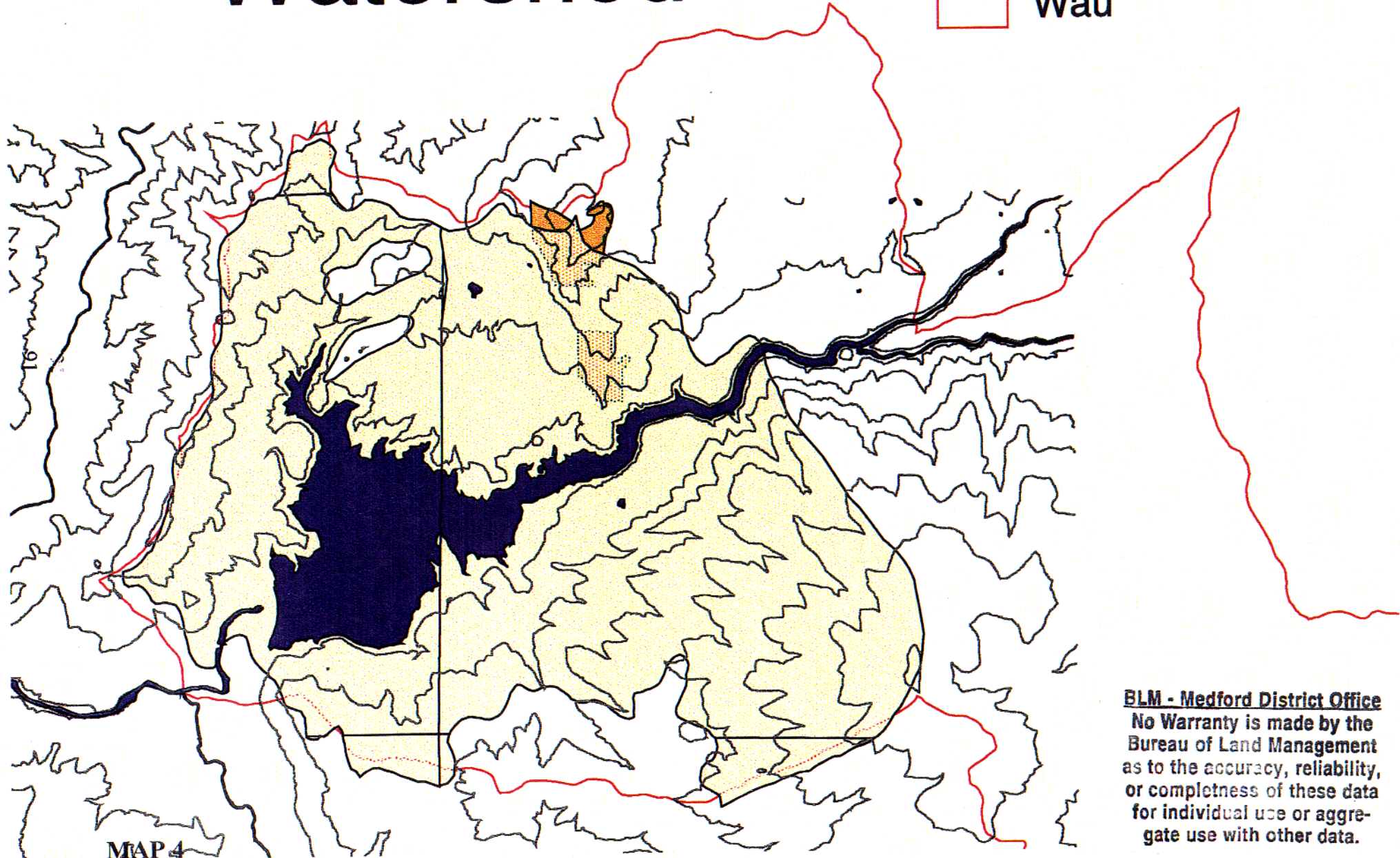
LEGEND

- LOSTCREEK W.A.U.
- LAKES
- OWLCORES
- Major_rds
- FROST-PRONE AREAS
- FRAGILE SOILS
- TOWNSHIPS
- CONNECTIVITY
- SPECIAL REC MGT AREA

BLM Medford District Office
No warranty is made by the
Bureau of Land Management
as to the accuracy, reliability,
or completeness of these data
for individual use or aggregate
use with other data.

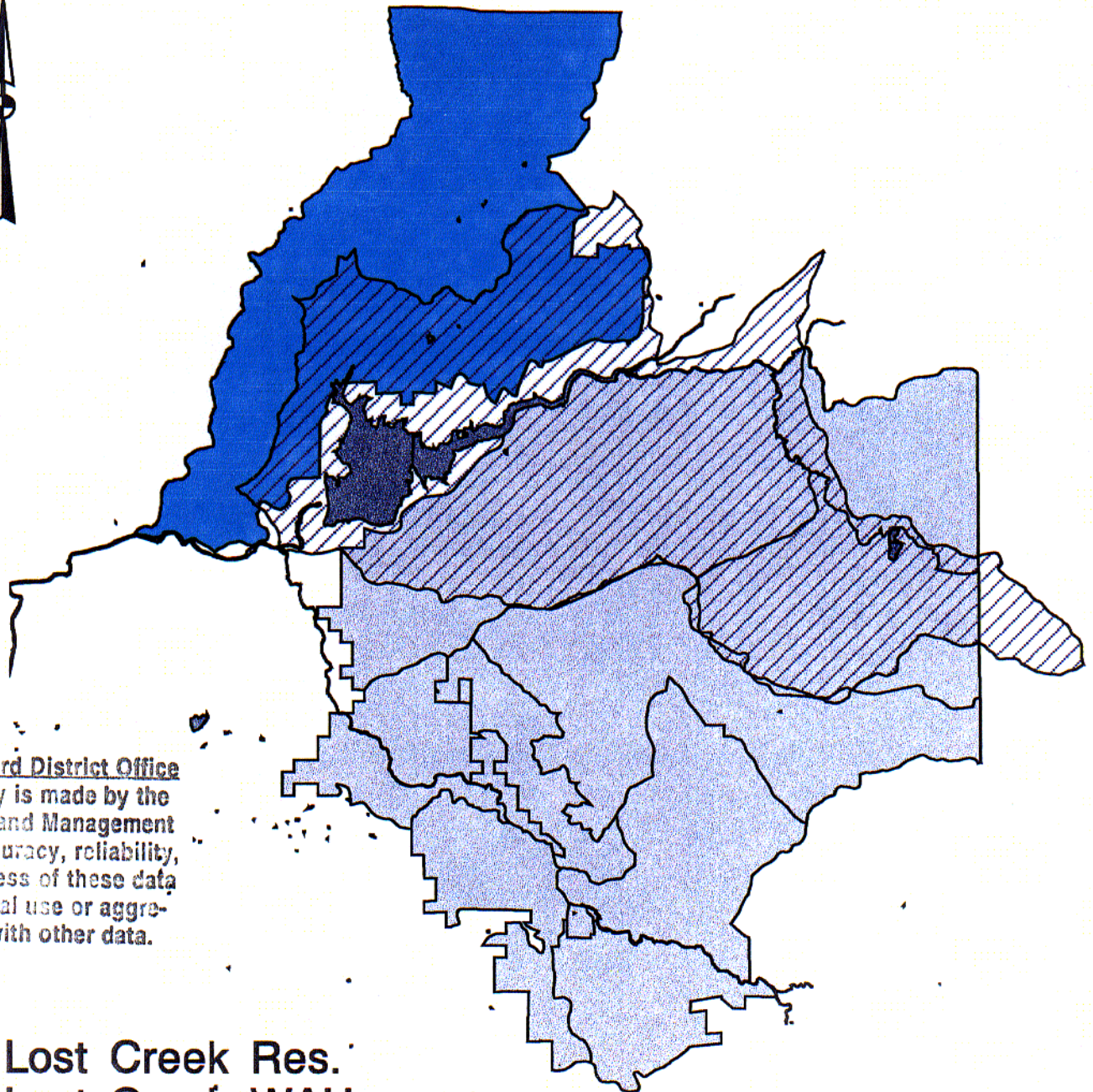
VRM Lost Creek Watershed

- Lost ck Lak
- 500ft contours
- Vrm II
- Acec
- Wau


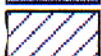




BLM - Medford District Office
No Warranty is made by the Bureau of Land Management as to the accuracy, reliability, or completeness of these data for individual use or aggregate use with other data.

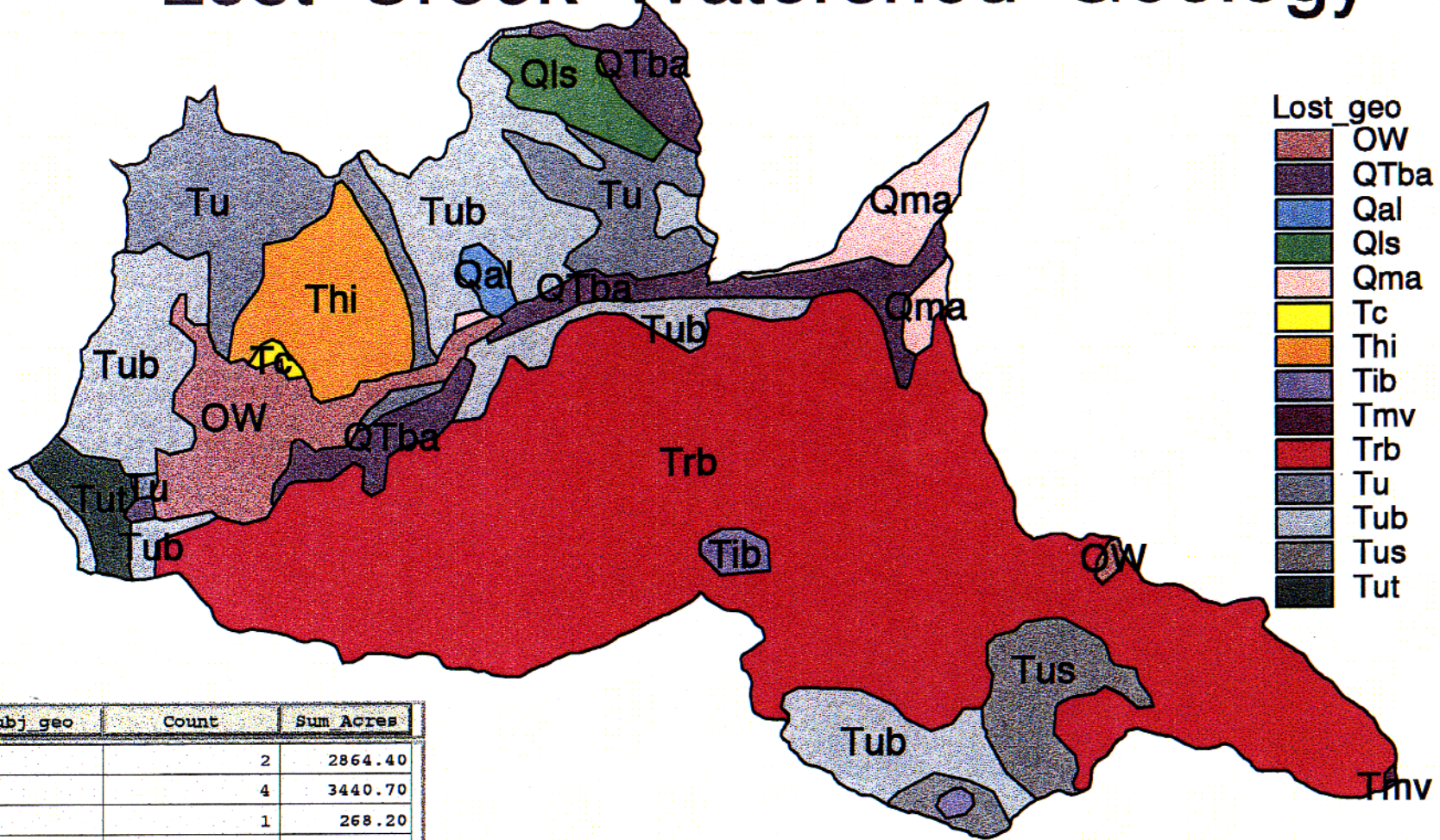
Lost Creek WAU and intersecting grazing allotments



BLM - Medford District Office
No Warranty is made by the
Bureau of Land Management
as to the accuracy, reliability,
or completeness of these data
for individual use or aggregate
use with other data.

-  Lost Creek Res.
-  Lost Creek WAU
-  Summit Prairie Allotment
-  Lost Creek Allotment

Lost Creek Watershed Geology

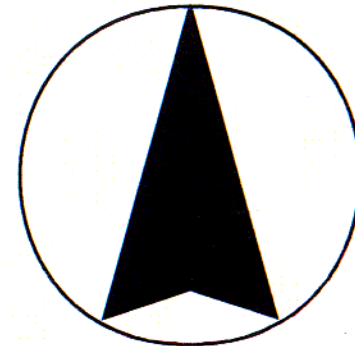


93

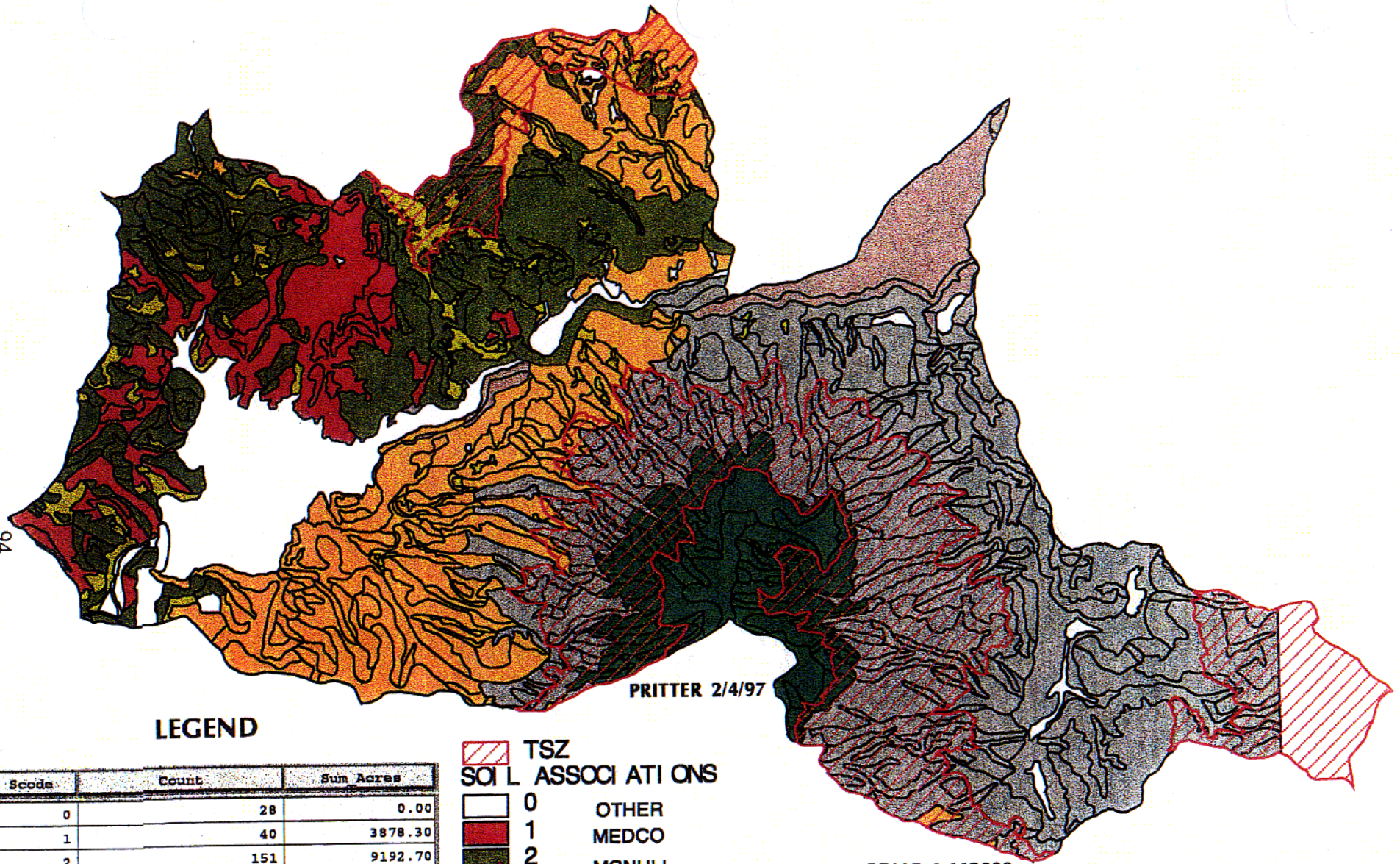
Subj_geo	Count	Sum Acres
OW	2	2864.40
QTba	4	3440.70
Qal	1	268.20
Qls	1	1170.60
Qma	3	1459.50
Tc	1	109.60
Thi	1	2525.80
Tib	2	364.20
Tmv	1	20.90
Trb	1	29252.10
Tu	5	5226.10
Tub	7	9221.30
Tus	2	2144.50
Tut	1	794.70

BLM - Medford District Office
 No Warranty is made by the
 Bureau of Land Management
 as to the accuracy, reliability,
 or completeness of these data
 for individual use or aggregate
 use with other data.

T Coffey 2/97



94



LEGEND

Scode	Count	Sum Acres
0	28	0.00
1	40	3878.30
2	151	9192.70
3	48	1616.80
4	197	20916.10
5	48	4496.70
6	137	10878.80
7	11	2048.30

- TSZ**
SOIL ASSOCIATIONS
- 0 OTHER
 - 1 MEDCO
 - 2 MCNULL
 - 3 MCMULLIN
 - 4 DUMMONT/COYOTA
 - 5 DONEGAN
 - 6 FREEZNER/GEPPERT
 - 7 CRATER/ALCOT

SCALE 1:112000



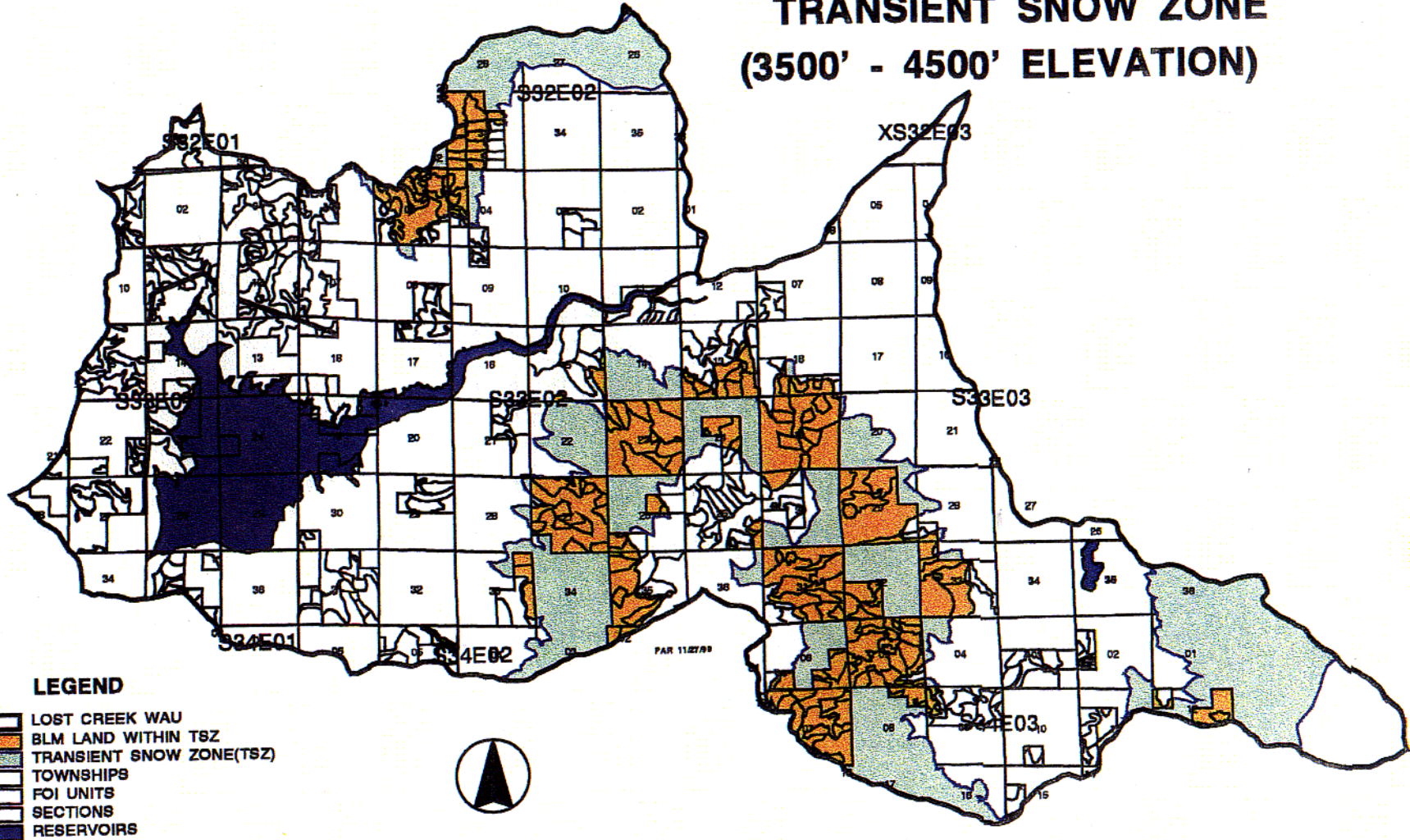
BLM - Medford District Office
 No Warranty is made by the Bureau of Land Management as to the accuracy, reliability, or completeness of these data for individual use or aggregate use with other data.

MAP 7

LOST CREEK W.A.U.

TRANSIENT SNOW ZONE (3500' - 4500' ELEVATION)

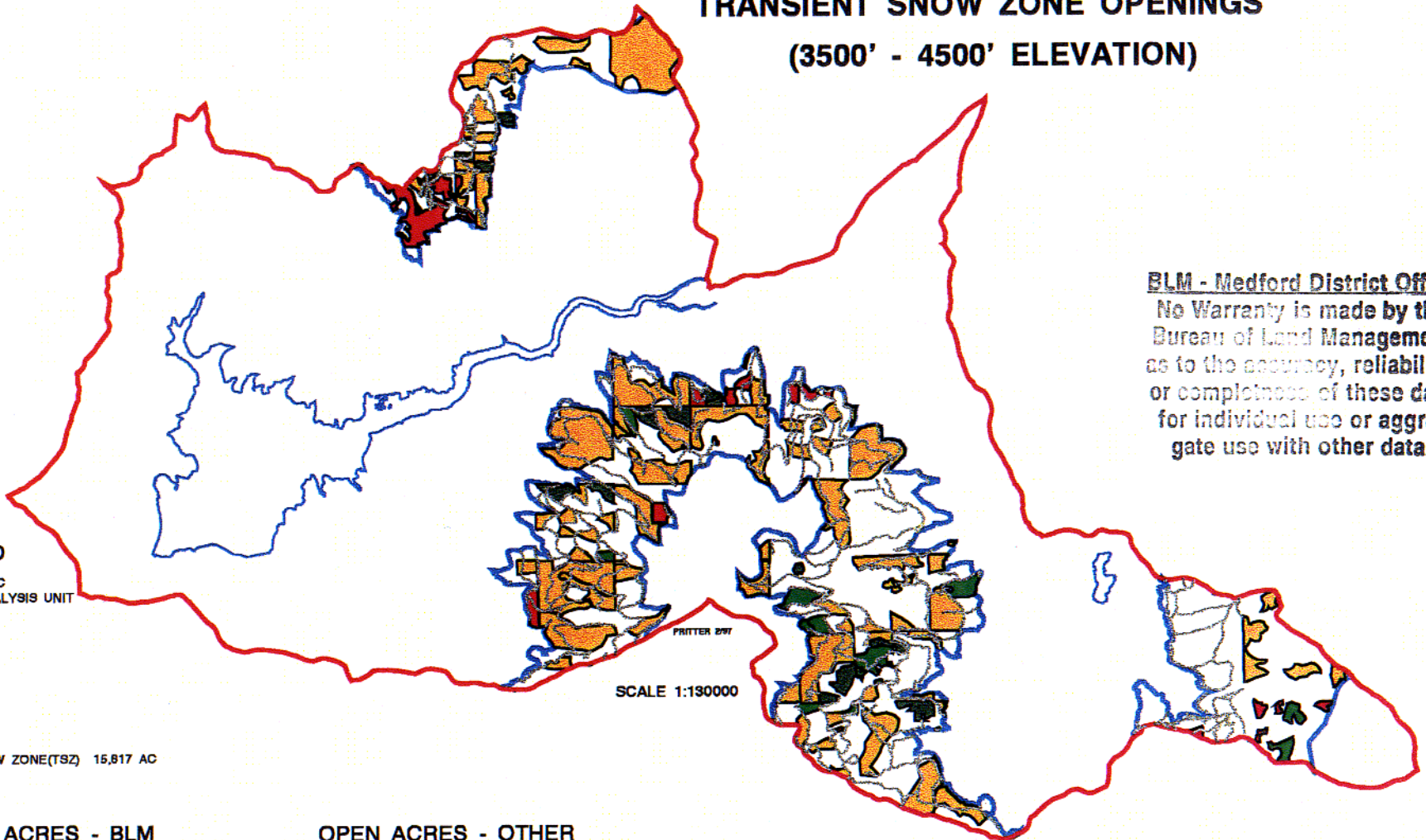
95



BLM - Medford District Office
No Warranty is made by the Bureau of Land Management as to the accuracy, reliability, or completeness of these data for individual use or aggregate use with other data.

LOST CREEK WAU

TRANSIENT SNOW ZONE OPENINGS (3500' - 4500' ELEVATION)



BLM - Medford District Office
 No Warranty is made by the Bureau of Land Management as to the accuracy, reliability, or completeness of these data for individual use or aggregate use with other data.

96

LEGEND

- ROADS - 548.8 AC
- WATERSHED ANALYSIS UNIT
- OPEN - BLM
 - 0
 - 0.4
 - 0.6
 - 0.8
 - 1
- OPEN - OTHER
 - 0.6
 - 0.8
 - 1
- TRANSIENT SNOW ZONE(TSZ) 15,817 AC
- RESERVOIRS

PRITTER 297

SCALE 1:130000

OPEN ACRES - BLM

RFactor	Count	Sum Acres
0.4	24	167.00
0.6	11	191.20
0.8	59	1032.60
1.0	25	420.60

TOTAL 1811.4 AC

OPEN ACRES - OTHER

RFactor	Count	Sum Acres
0.6	2	39.40
0.8	32	2727.60
1.0	5	50.40

TOTAL 2,817.4 AC



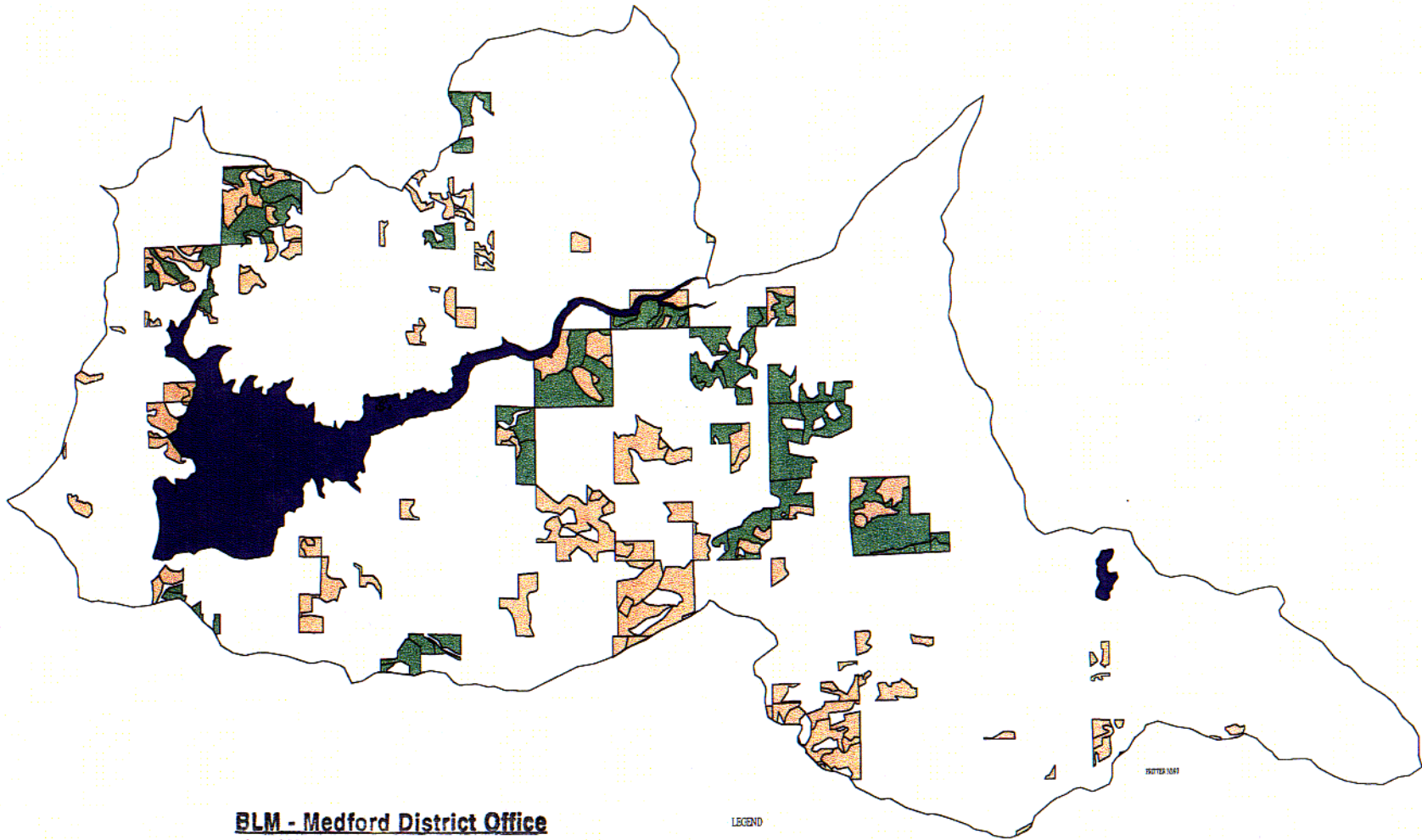
TOTAL NON-RECOVERED OPENINGS 5177.6 AC = 33.1 %
 TOTAL TSZ - 15817 AC

33.1 % OF TRANSIENT SNOW ZONE IS IN NON-RECOVERED OPENINGS

* RFACTOR = DEGREE OF RECOVERY, DETERMINED BY BFRA SOIL SCIENTIST, BASED ON STAND AGE *

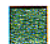


LOST CREEK W.A.U.— SPOTTED OWL HABITAT

97

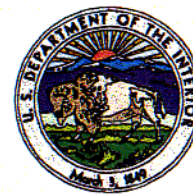


BLM - Medford District Office
No Warranty is made by the
Bureau of Land Management
as to the accuracy, reliability,
or completeness of these data
for individual use or aggregate
use with other data.

LEGEND

-  OWLHAB 1
3,181.1 ACRES
-  OWLHAB 2
4,147.4 ACRES
-  RESERVOIRS

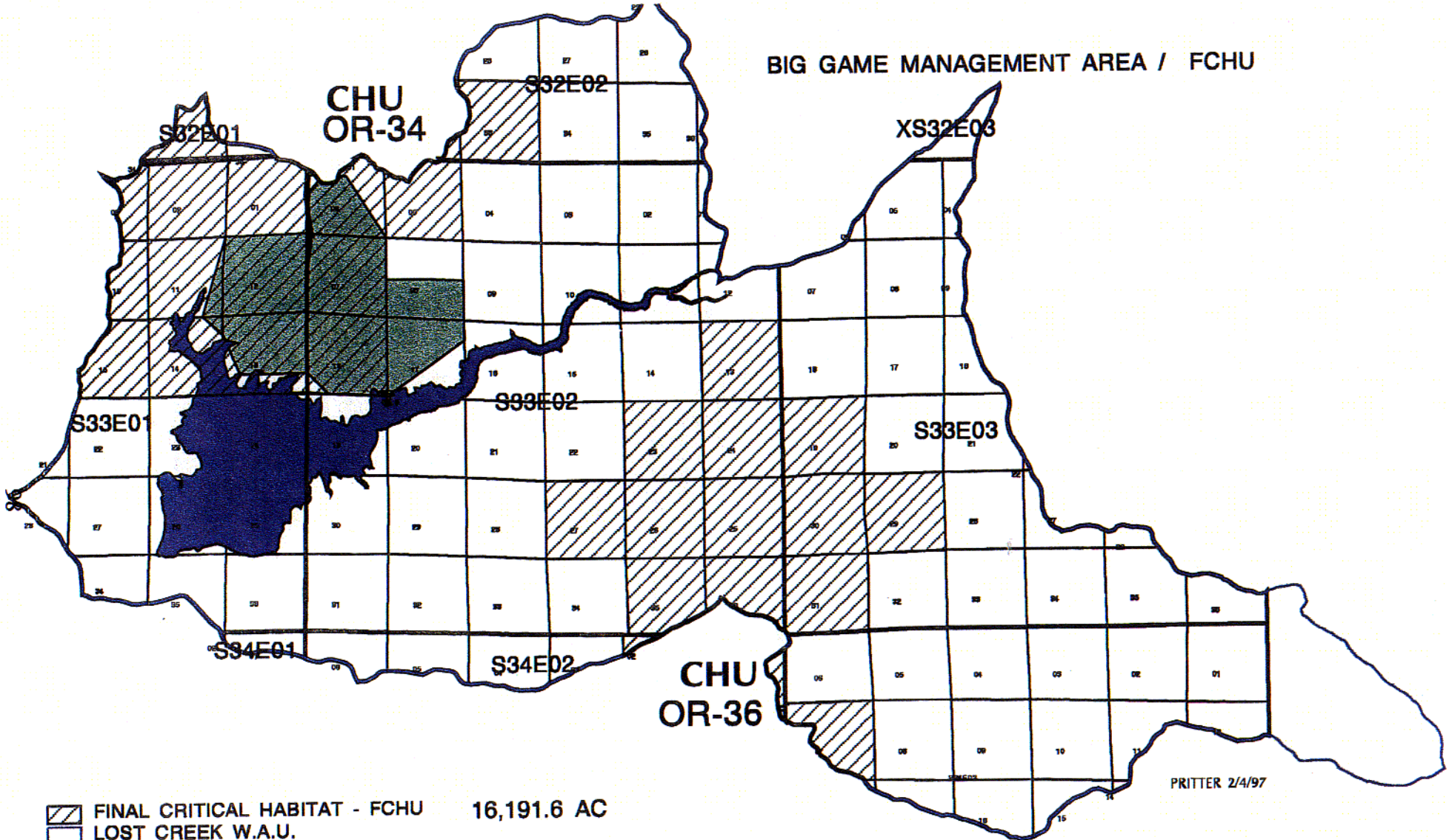
MAP 10


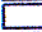


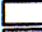



NO WARRANTY IS MADE BY THE BUREAU OF LAND MANAGEMENT
AS TO THE ACCURACY, RELIABILITY OR COMPLETENESS
OF THIS DATA FOR INDIVIDUAL USE OR AGGREGATE USE
WITH OTHER DATA.

LOST CREEK WAU

BIG GAME MANAGEMENT AREA / FCHU



-  FINAL CRITICAL HABITAT - FCHU 16,191.6 AC
-  LOST CREEK W.A.U.
-  TOWNSHIPS
-  LOST CREEK RESERVOIR
-  SECTIONS
-  BIG GAME MANAGEMENT AREA - ELK/WINTER 3,587.3 AC

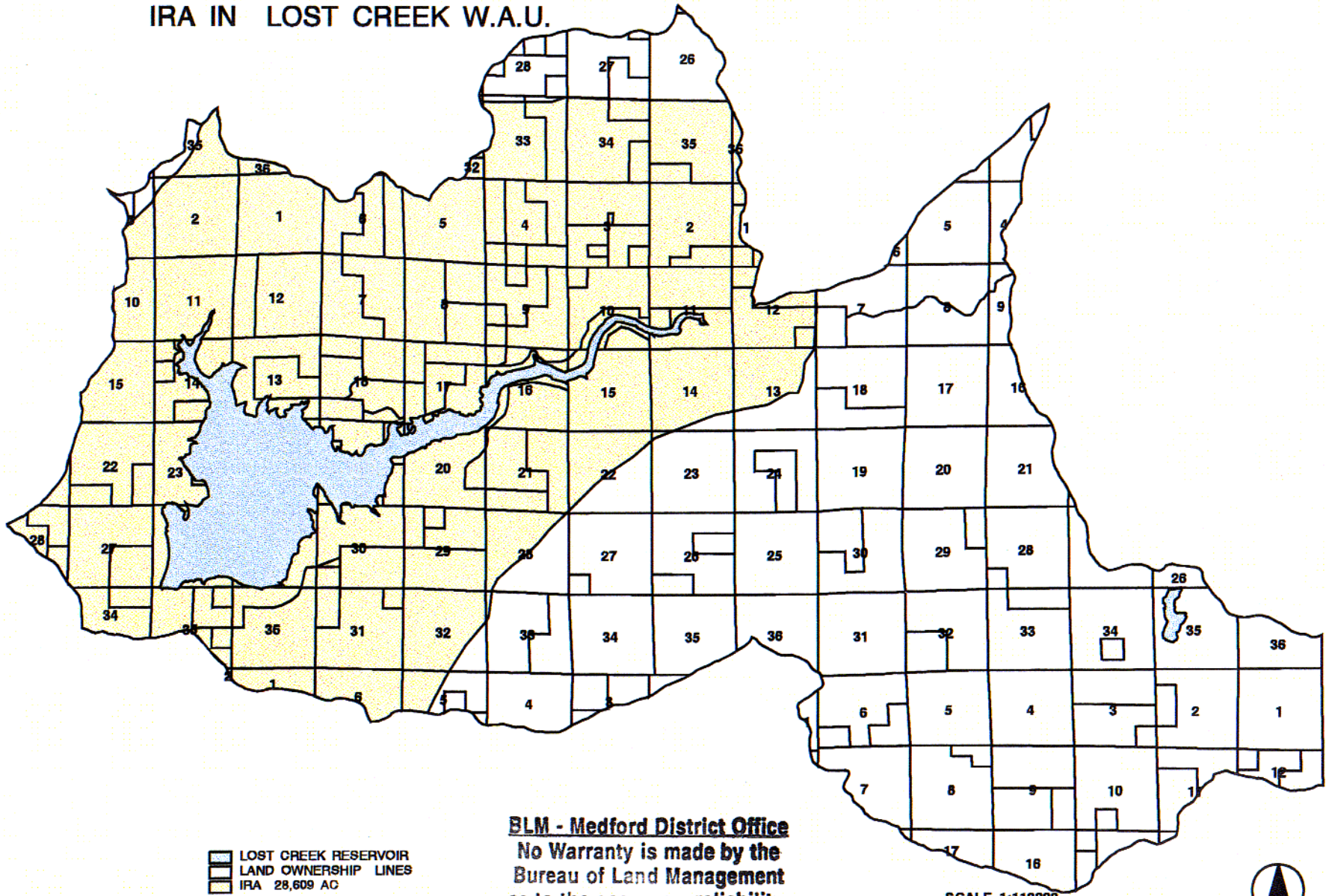
PRITTER 2/4/97



BLM - Medford District Office
 No Warranty is made by the Bureau of Land Management as to the accuracy, reliability, or completeness of these data for individual use or aggregate use with other data.

IRA IN LOST CREEK W.A.U.

66



MAP 12

■ LOST CREEK RESERVOIR
— LAND OWNERSHIP LINES
□ IRA 28,609 AC

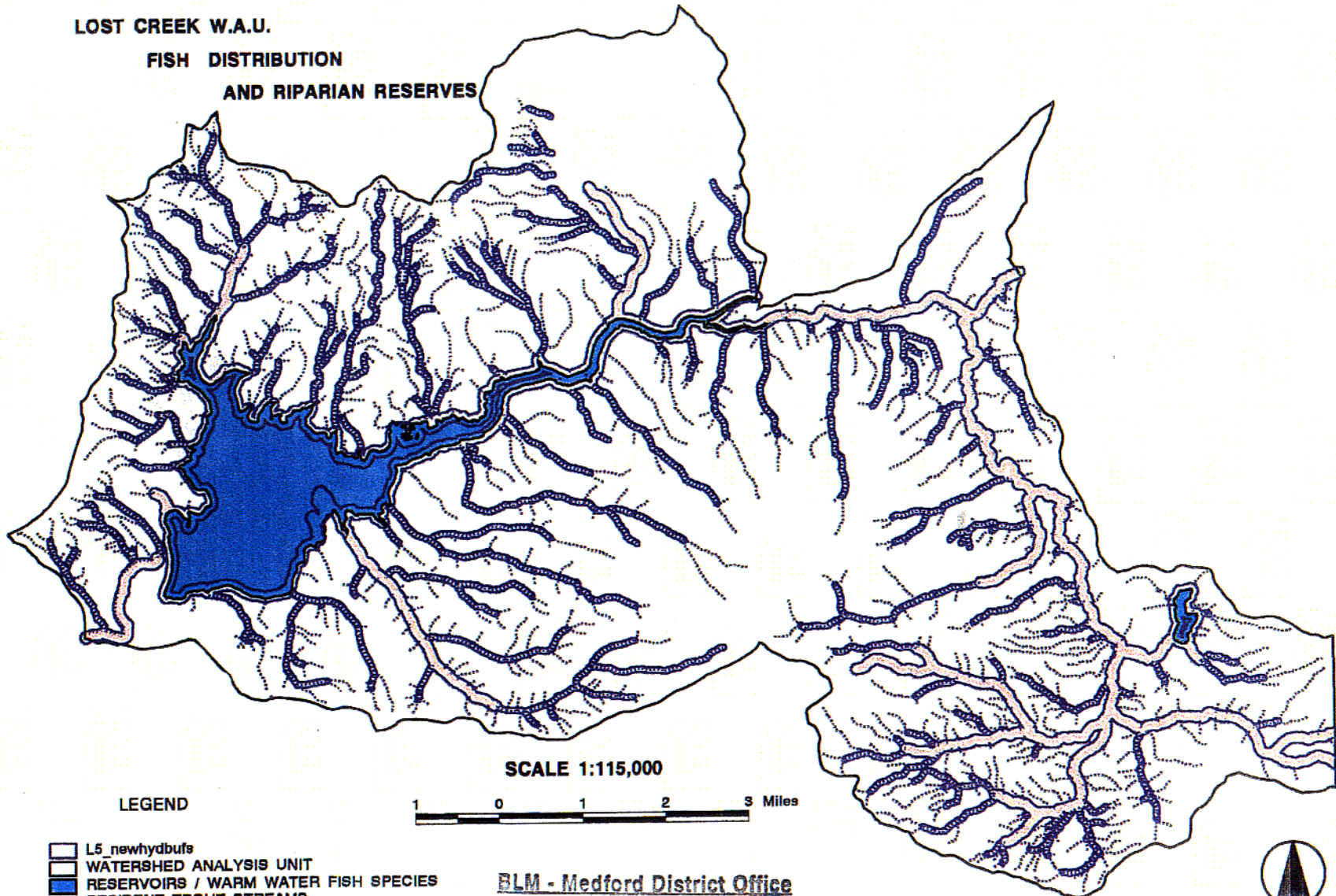
BLM - Medford District Office
No Warranty is made by the
Bureau of Land Management
as to the accuracy, reliability,
or completeness of these data
for individual use or aggregate
use with other data.

SCALE 1:110000

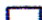
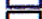



PAR 208



**LOST CREEK W.A.U.
FISH DISTRIBUTION
AND RIPARIAN RESERVES**



LEGEND

-  L5_newhydbufs
-  WATERSHED ANALYSIS UNIT
-  RESERVOIRS / WARM WATER FISH SPECIES
-  RESIDENT TROUT STREAMS
-  OTHER STREAMS

SCALE 1:115,000



BLM - Medford District Office
No Warranty is made by the Bureau of Land Management as to the accuracy, reliability, or completeness of these data for individual use or aggregate use with other data.

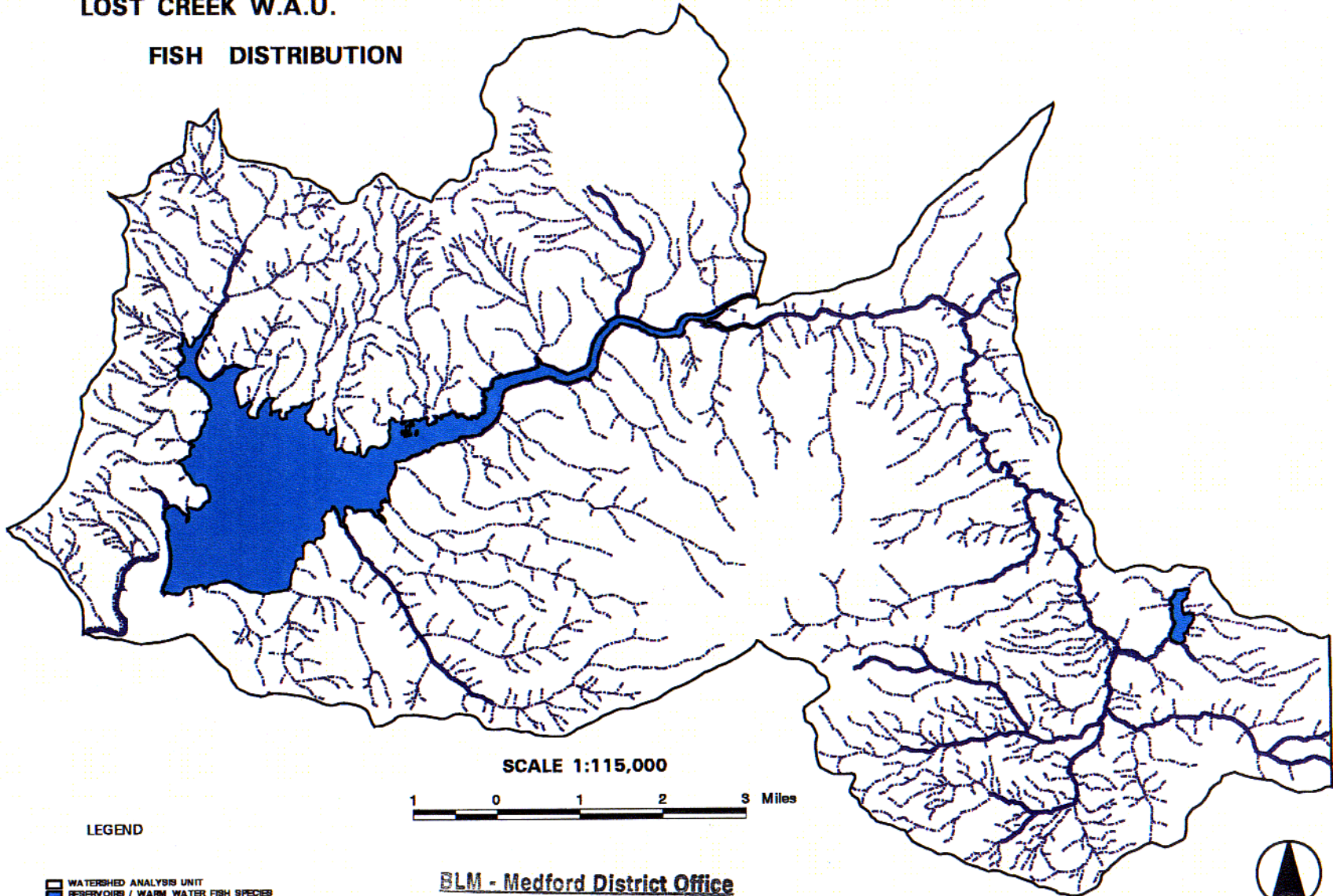
PRINTER
1/90



LOST CREEK W.A.U.

FISH DISTRIBUTION

101



SCALE 1:115,000



LEGEND

- WATERSHED ANALYSIS UNIT
- RESERVOIRS / WARM WATER FISH SPECIES
- RESIDENT TROUT STREAMS
- OTHER STREAMS

BLM - Medford District Office
No Warranty is made by the Bureau of Land Management as to the accuracy, reliability, or completeness of these data for individual use or aggregate use with other data.

P. BITTER
1/99

LOST CREEK WATERSHED ANALYSIS UNIT

80 YR OLD & GREATER STANDS - 15% FEDERAL FOREST ANALYSIS

LATE SUCCESSIONAL FOREST (STAND AGE 80 YRS) SUMMARY

TOTAL FEDERAL ACRES IN WATERSHED
 BLM 19,076
 ACCE 2,966
 USFS 2,858
 TOTAL 22,900

** NO STAND AGES AVAILABLE FOR USFS OR ACCE LATE SUCCESSIONAL FOREST
 ** WAS INTERPRETED WITH 1955 AERIAL PHOTOS FOR COE LAND, ALL USFS LAND
 ** WAS CONSIDERED FORESTED AND EARLY SUCCESSIONAL FOR THIS ANALYSIS

FORESTED BLM ACRES = 17,624
 FORESTED USFS ACRES = 254
 FORESTED ACCE ACRES = 1,876
 TOTAL
 15% OF FORESTED LAND = 2,654

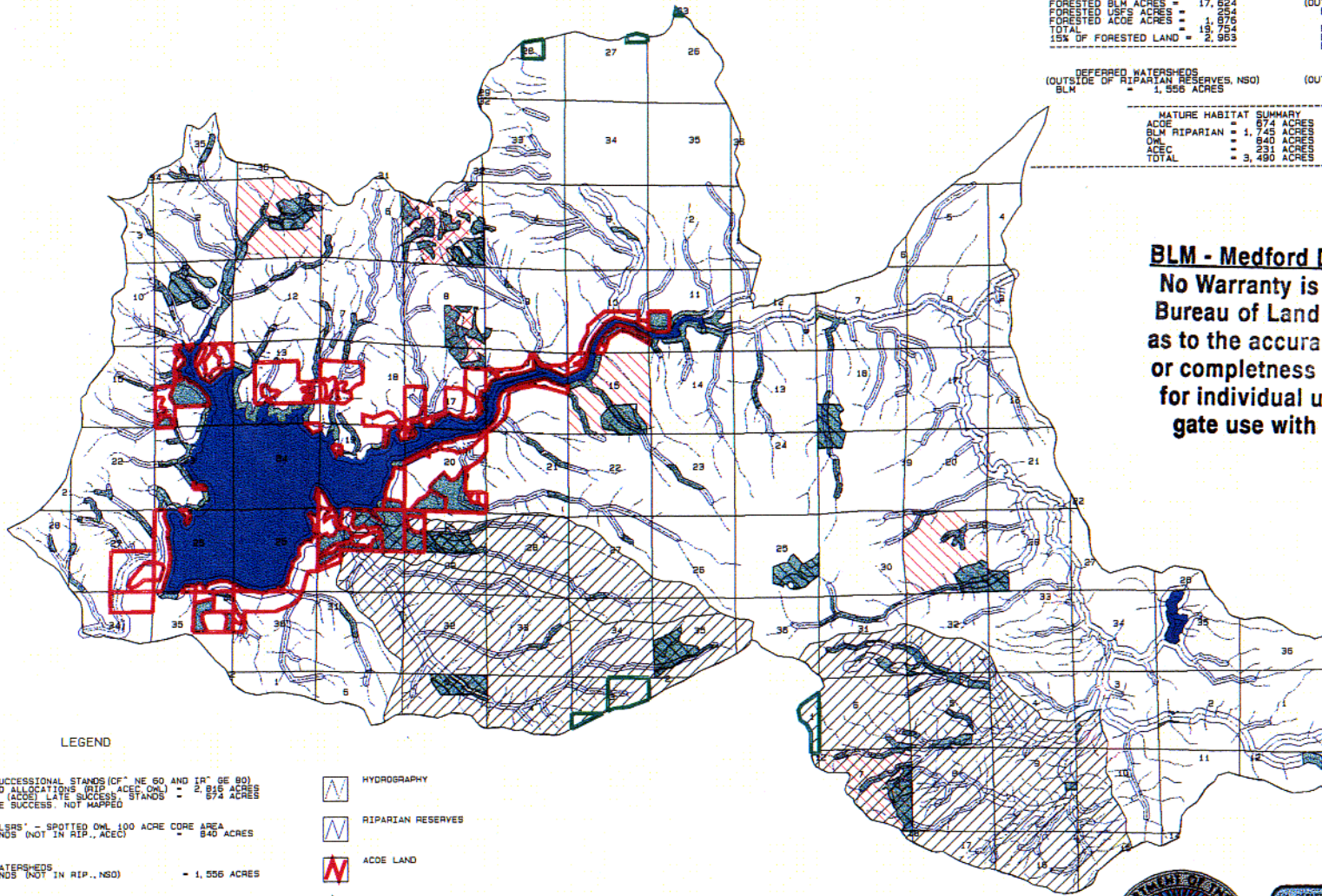
NSO CORE RESIDUAL HABITAT (OUTSIDE OF RIPARIAN RESERVES)
 BLM = 840 ACRES
 RIPARIAN RESERVE ACRES
 BLM GRCS = 2,917 ACRES
 BLM MATURE = 1,745 ACRES

DEFERRED WATERSHEDS (OUTSIDE OF RIPARIAN RESERVES, NSO)
 BLM = 1,556 ACRES

ACCE (OUTSIDE OF RIPARIAN RESERVES, NSO)
 BLM = 231 ACRES

MATURE HABITAT SUMMARY
 ACCE = 874 ACRES
 BLM RIPARIAN = 1,745 ACRES
 OML = 840 ACRES
 ACCE = 231 ACRES
 TOTAL = 3,490 ACRES

3,490/19,754 = 17.6%



BLM - Medford District Office
No Warranty is made by the
Bureau of Land Management
as to the accuracy, reliability,
or completeness of these data
for individual use or aggregate
use with other data.

LEGEND

- BLM LATE SUCCESSIONAL STANDS (CF NE 60 AND 1R SE 80) WITHIN LAND ALLOCATIONS (RIP ACCE OML) = 2,816 ACRES
 ARMY CORPS (ACCE) LATE SUCCESSIONAL STANDS = 674 ACRES
 USFS - LATE SUCCESS. NOT MAPPED
- 'UNMAPPED LRS' - SPOTTED OWL 100 ACRE CORE AREA MATURE STANDS (NOT IN RIP., ACCE) = 840 ACRES
- DEFERRED WATERSHEDS MATURE STANDS (NOT IN RIP., NSO) = 1,556 ACRES
- CONNECTIVITY/DIVERSITY BLOCK
- ACCE / ENVIRONMENTAL EDUCATION AREA MATURE STANDS (NOT IN RIP., NSO)
- RESERVOIRS
- HYDROGRAPHY
- RIPARIAN RESERVES
- ACCE LAND
- USFS LAND

MAP 15

SCALE 1:125000



102

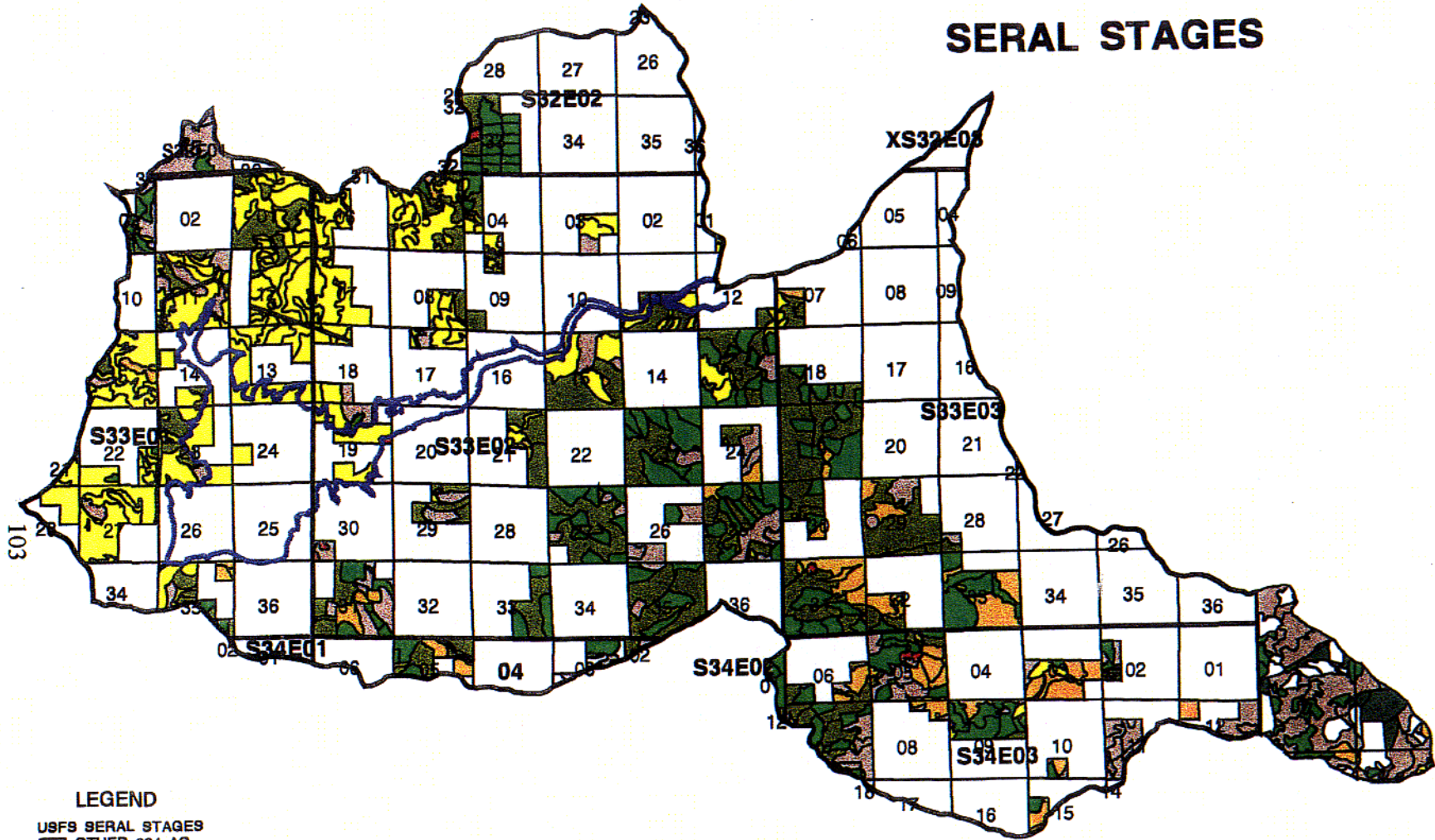
NO WARRANTY IS MADE BY THE BUREAU OF LAND MANAGEMENT AS TO THE ACCURACY, RELIABILITY OR COMPLETENESS OF THIS DATA FOR INDIVIDUAL USE OR AGGREGATE USE WITH OTHER DATA.

PAR 1/13/98

an18x11.eml

LOST CREEK W.A.J.

SERAL STAGES



LEGEND

USFS SERAL STAGES

- OTHER 604 AC
- EARLY 371 AC
- MID 61 AC
- LATE 1072 AC
- MATURE 239 AC
- WITHDRAWN 8 AC
- TOWNSHIP PERIMETERS
- LOST CREEK RESERVOIR
- BLM SERAL STAGES
- EARLY - 3,804 AC
- MID - 1,606 AC
- LATE - 2,418 AC
- MATURE - 5,414 AC
- WITHDRAWN FROM BASE - 5,743 AC
- HARDWOOD/BRUSH/SOLD - 77 AC



SCALE = 1: 130000

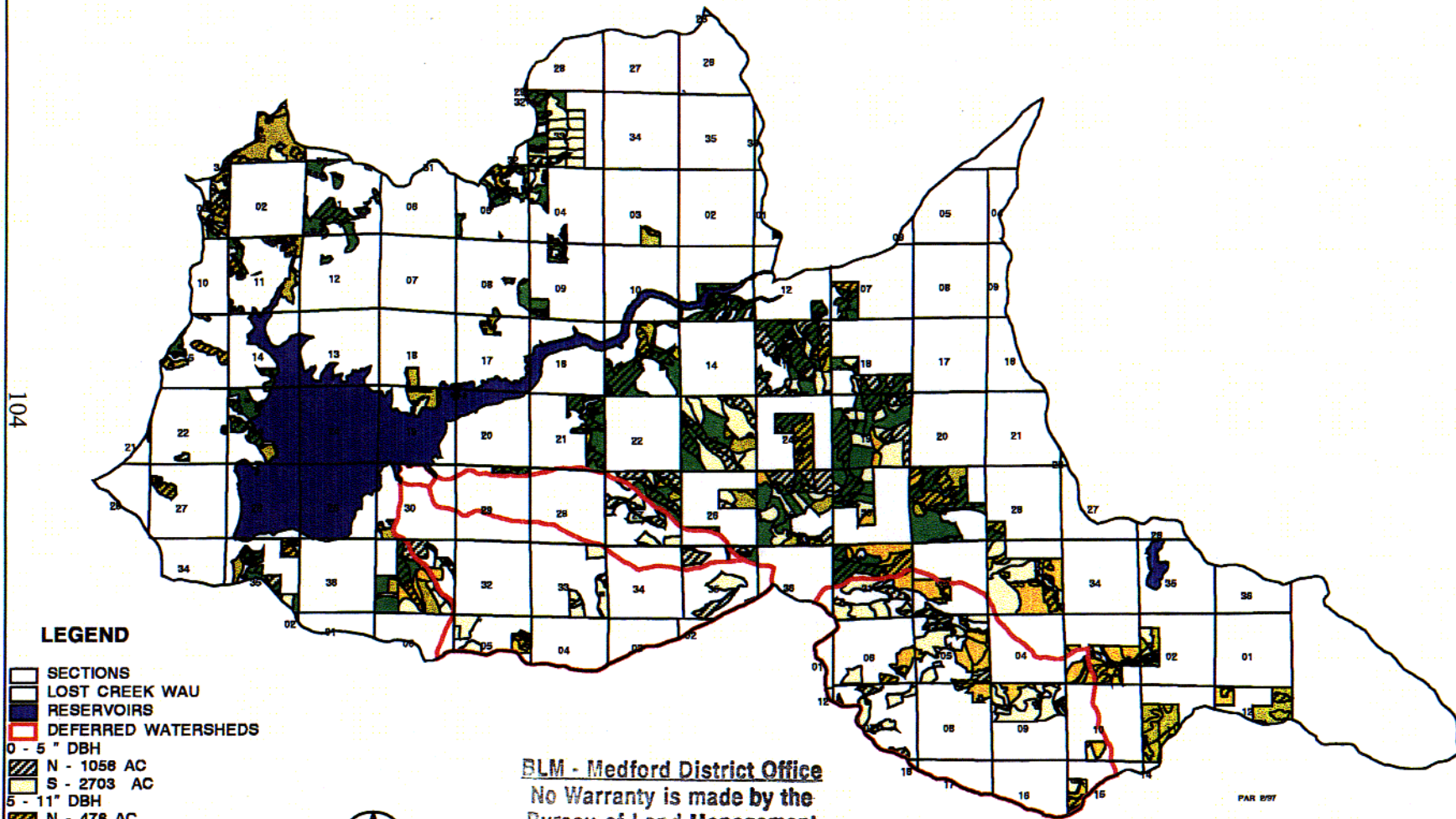
PRITTER 2/28/97

BLM - Medford District Office
 No Warranty is made by the Bureau of Land Management as to the accuracy, reliability, or completeness of these data for individual use or aggregate use with other data.

MAP 16

LOST CREEK W.A.U.

MATRIX LANDS AVAILABLE FOR STAND TREATMENT BY ASPECT AND SIZE CLASS



LEGEND

- SECTIONS
- LOST CREEK WAU
- RESERVOIRS
- DEFERRED WATERSHEDS
- 0 - 5" DBH
- N - 1058 AC
- S - 2703 AC
- 5 - 11" DBH
- N - 478 AC
- S - 1085 AC
- 11 - 21" DBH
- N - 399 AC
- S - 1189 AC
- 21" + DBH
- N - 1523 AC
- S - 1831 AC

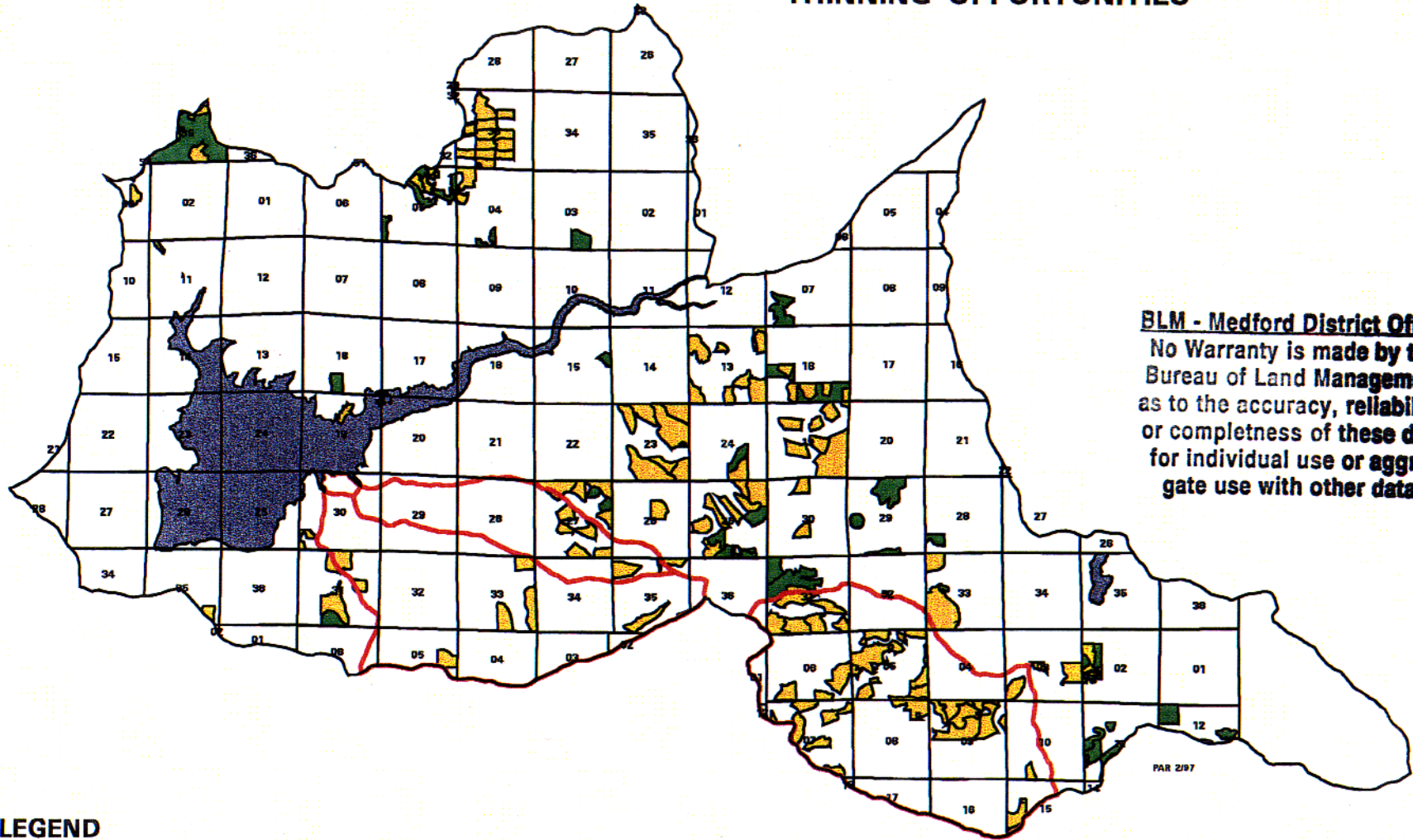


SCALE 1:130000

BLM - Medford District Office
 No Warranty is made by the
 Bureau of Land Management
 as to the accuracy, reliability,
 or completeness of these data
 for individual use or aggregate
 use with other data.

WITHDRAWN LANDS AND SPOTTED OWL RESIDUAL HABITAT WERE EXCLUDED FROM THE ANALYSIS. DEFERRED WATERSHEDS WERE ALSO EXCLUDED FOR SIZE CLASS 11" DBH AND LARGER.

LOST CREEK W.A.U. THINNING OPPORTUNITIES



BLM - Medford District Office
 No Warranty is made by the
 Bureau of Land Management
 as to the accuracy, reliability,
 or completeness of these data
 for individual use or aggregate
 use with other data.

LEGEND

- SECTIONS
- LOST CREEK WAU
- RESERVOIRS
- DEFERRED WATERSHEDS
- COMMERCIAL THIN
- AGE 50 - 150 , 1,110 AC
- PRECOMMERCIAL THIN
- AGE < 50, 3,463 AC

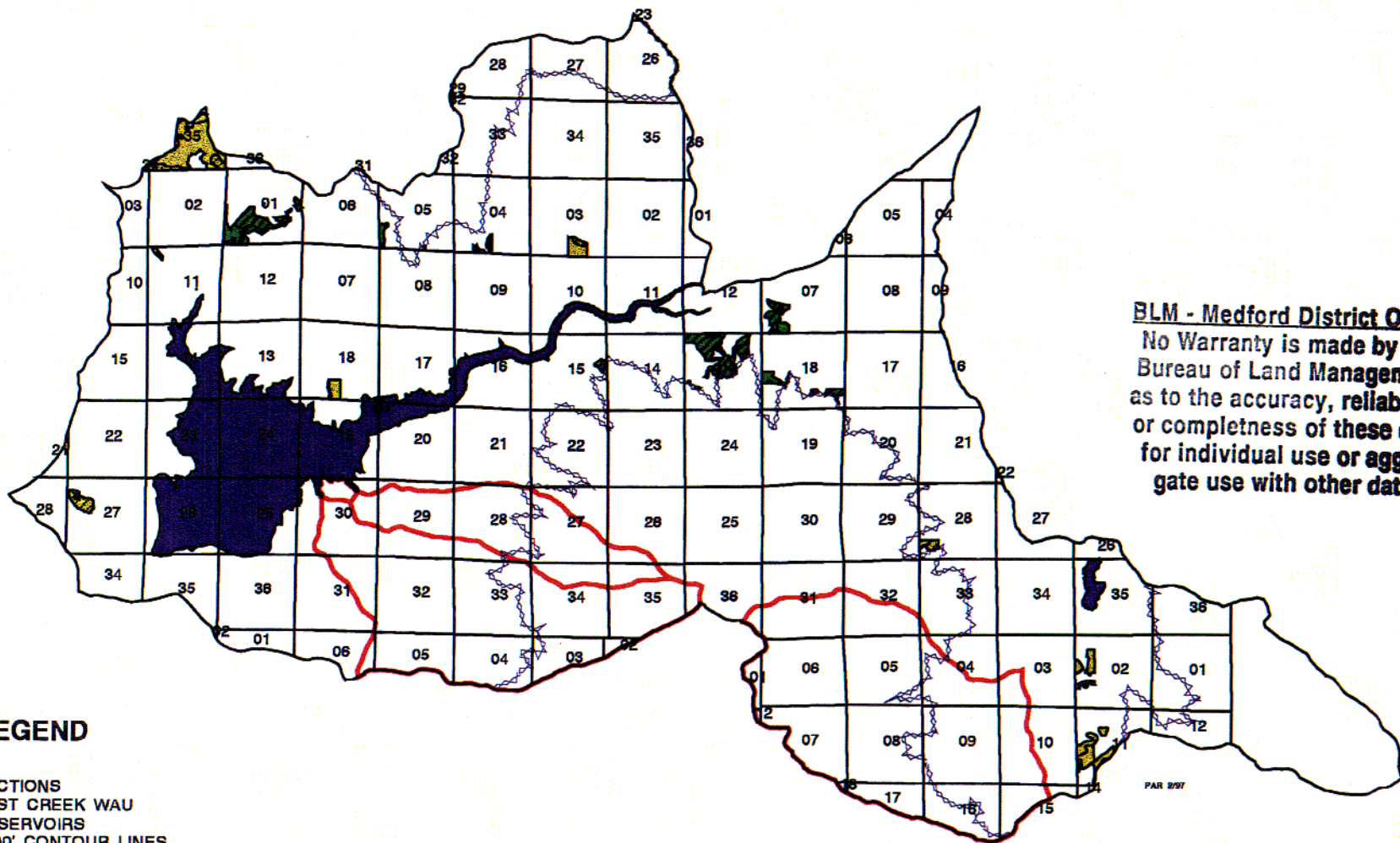


SCALE 1:130000

WITHDRAWN LAND STANDS WITHIN DEFERRED WATERSHEDS
 AND SPOTTED OWL RESIDUAL HABITAT WERE EXCLUDED FROM
 COMMERCIAL THINNING CATEGORY. PRECOMMERCIAL THINNING
 CATEGORY EXCLUDED WITHDRAWN AND RESIDUAL HABITAT.
 LM* (STOCKING) EQUALS 3.

LOST CREEK W.A.U.

PRIORITY AREAS FOR RETAINING LARGE PONDEROSA AND SUGAR PINE - BY ASPECT AND SIZE CLASS



BLM - Medford District Office
 No Warranty is made by the Bureau of Land Management as to the accuracy, reliability, or completeness of these data for individual use or aggregate use with other data.

LEGEND

- SECTION
- LOST CREEK WAU
- RESERVOIR
- 3500' CONTOUR LINES
- DEFERRED WATERSHEDS
- 11 - 21" DBH
 - N - 98 AC
 - S - 362 AC
- 21" + DBH
 - N - 252 AC
 - S - 108 AC



SCALE 1:130000

WITHDRAWN LANDS, SPOTTED OWL RESIDUAL HABITAT DEFERRED WATERSHEDS AND ELEVATIONS ABOVE 3500' WERE EXCLUDED FROM THE ANALYSIS.
 LM* (STOCKING) EQUALS 3