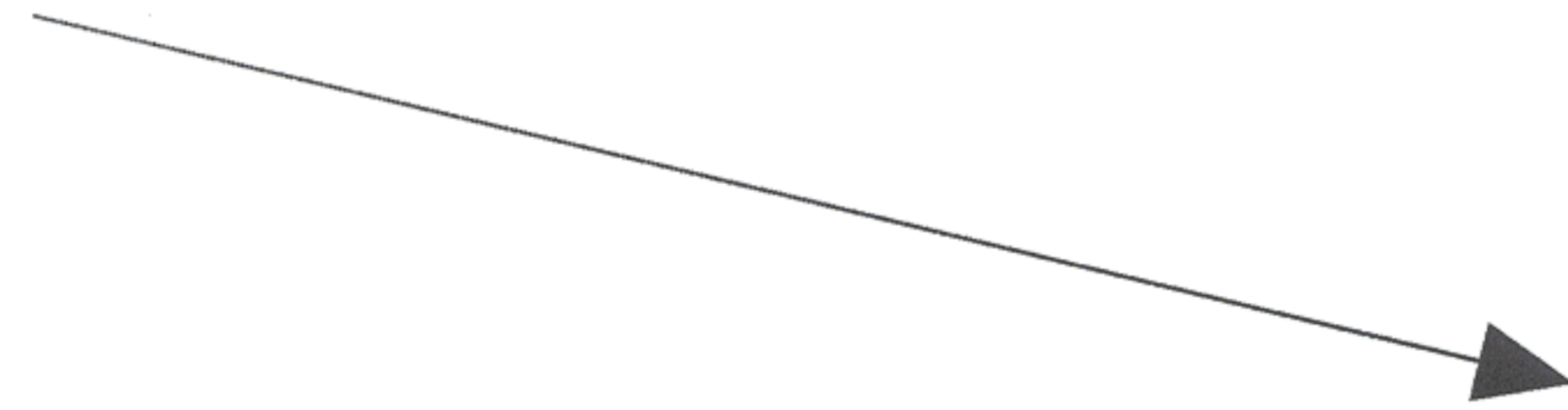
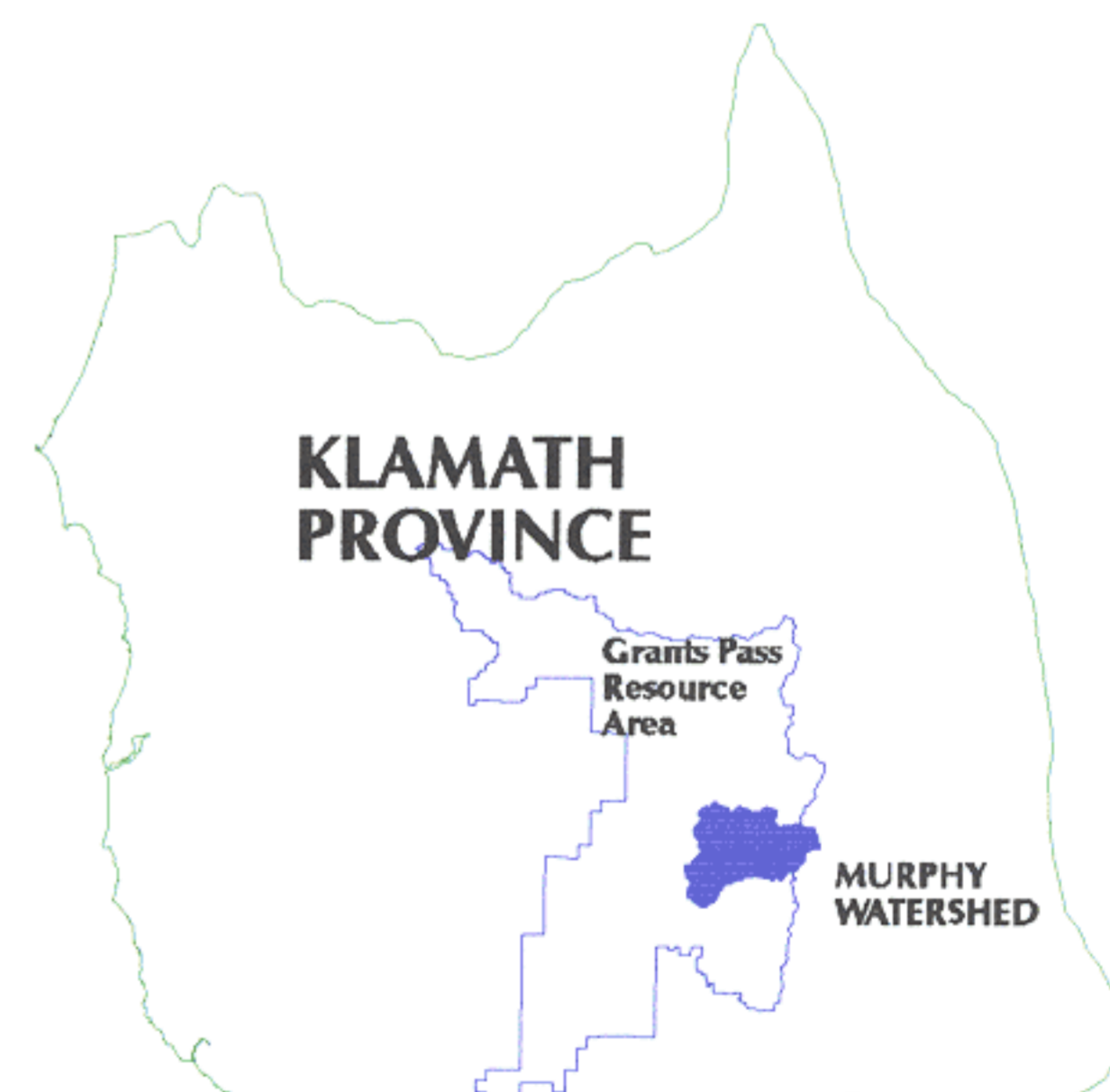


## **Appendix A: Maps**

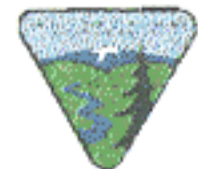
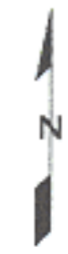
- Map 1: General Location of the Murphy Watershed
- Map 2: BLM Land Use Allocations in the Murphy Watershed
- Map 3: Dominant Vegetation in the Murphy Watershed
- Map 4: Seral Stages on BLM Lands in the Murphy Watershed
- Map 5: Plant Series in the Murphy Watershed
- Map 6: Vegetation Condition Class in the Murphy Watershed
- Map 7: Spotted Owl Habitat Rating (McKelvey) in the Murphy Watershed
- Map 8: Stream Orders (>2) in the Murphy Watershed
- Map 9: Approximate Distribution of Coho and Chinook Salmonids in the Murphy Watershed
- Map 10: Approximate Distribution of Steelhead and Cutthroat in the Murphy Watershed
- Map 11: Mineral Potential in the Murphy Watershed
- Map 12: Fire Hazard Rating in the Murphy Watershed
- Map 13: Fire Risk Rating in the Murphy Watershed
- Map 14: Fuel Models in the Murphy Watershed
- Map 15: Fire Value Rating in the Murphy Watershed
- Map 16: Areas of High Hazard, Risk and Value-at-Risk Ratings in the Murphy Watershed
- Map 17: TEP in the Murphy Watershed



111

Map 1

**GENERAL LOCATION of the  
MURPHY WATERSHED**



Note: No warranty is made by the Bureau of Land Management as to the accuracy, reliability, or completeness of these data for individual use or aggregate use with other data.

R6W

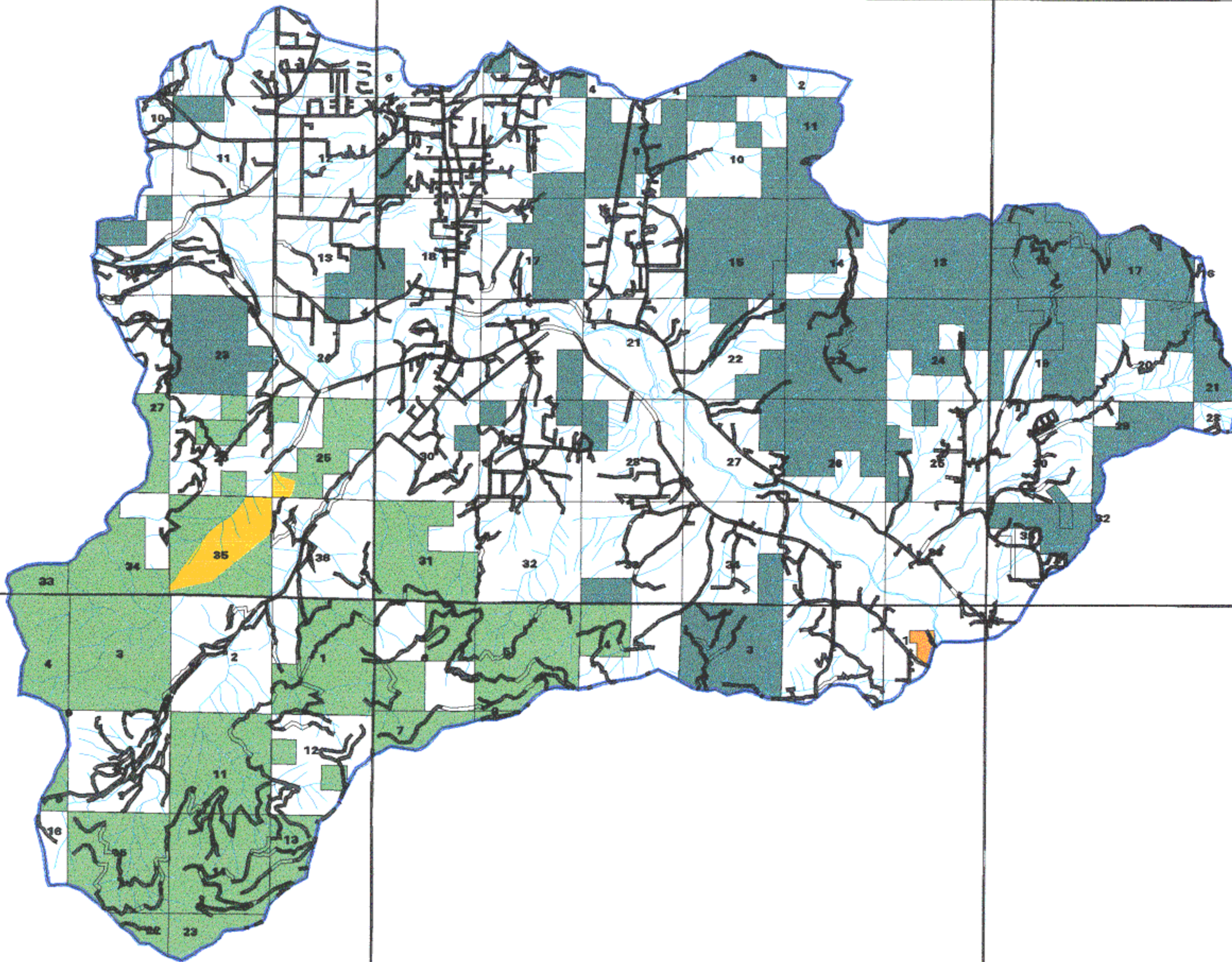
R5W

R4W

T37S

112

T38S



SCALE 1:100000

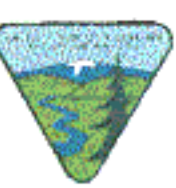


- LEGEND**
- AMA not in LSR
  - LSR in AMA
  - PROVOLT
  - ACEC
  - WATERSHED BOUNDARY
  - STREAMS
  - ROADS

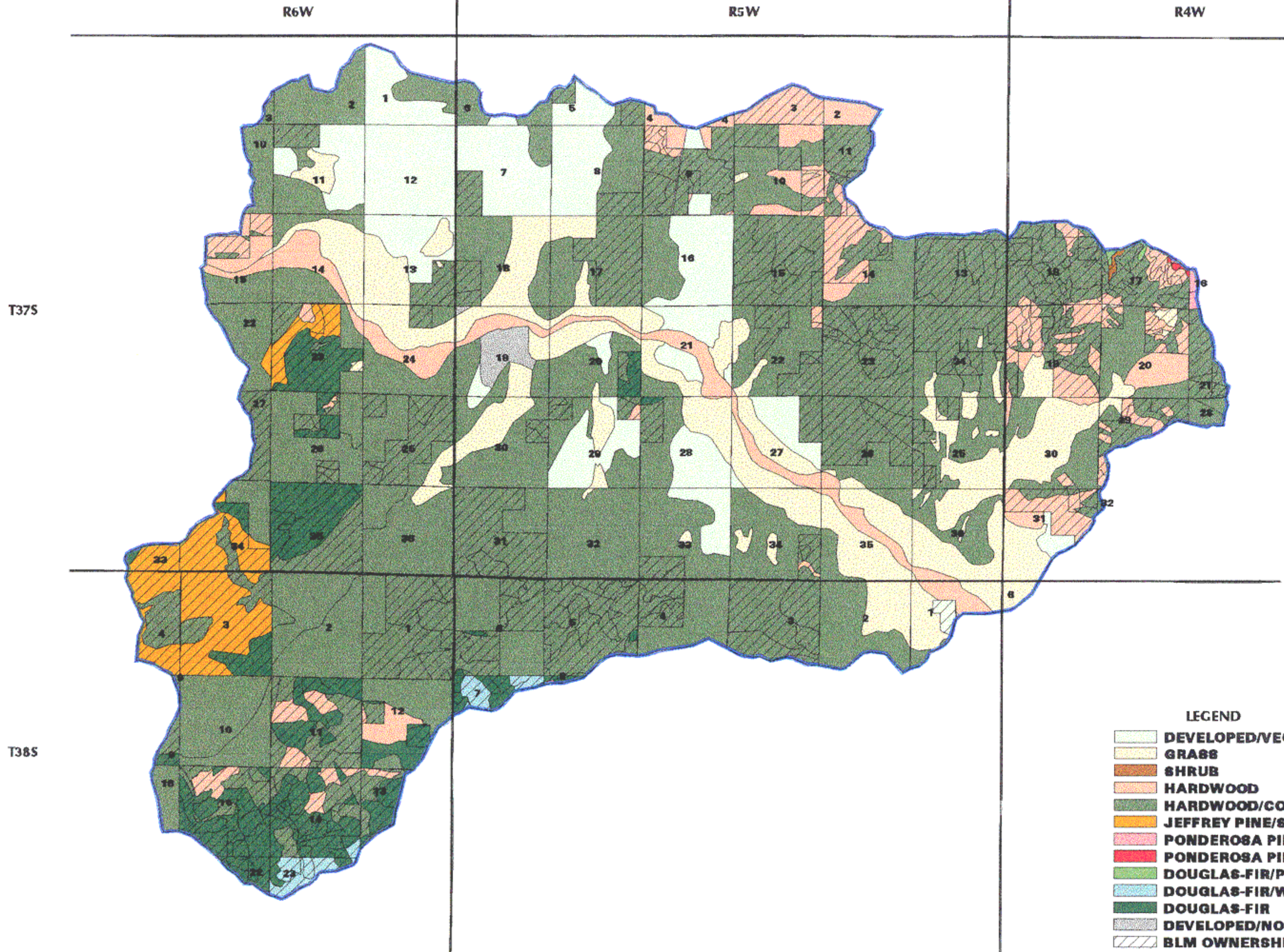
Map 2

**BLM LAND USE ALLOCATIONS  
in the MURPHY WATERSHED**

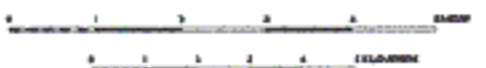
Note: No warranty is made by the Bureau of Land Management as to the accuracy, reliability, or completeness of these data for individual use or aggregate use with other data.



02/01/99  
Dennis Glover



- LEGEND**
- DEVELOPED/VEGETATED**
  - GRASS**
  - SHRUB**
  - HARDWOOD**
  - HARDWOOD/CONIFER**
  - JEFFREY PINE/SHRUB**
  - PONDEROSA PINE/GRASS**
  - PONDEROSA PINE/SHRUB**
  - DOUGLAS-FIR/PINE**
  - DOUGLAS-FIR/WHITE FIR**
  - DOUGLAS-FIR**
  - DEVELOPED/NONVEGETATED**
  - BLM OWNERSHIP**
  - WATERSHED BOUNDARY**



SCALE 1:100000

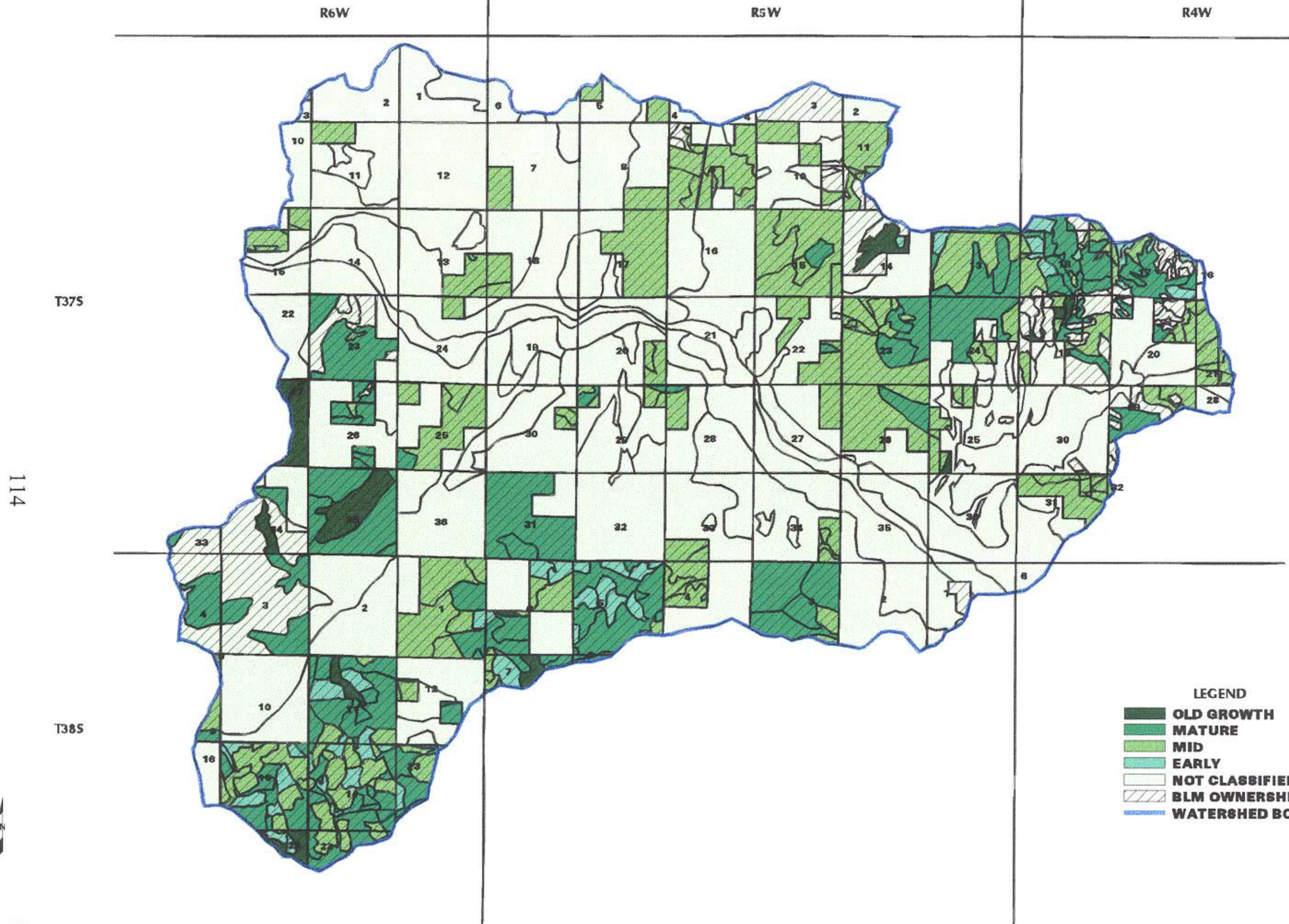
Map 3

**DOMINANT VEGETATION IN THE MURPHY WATERSHED**

July 24, 1997  
Dennis Glover

Note: No warranty is made by the Bureau of Land Management as to the accuracy, reliability, or completeness of these data for individual use or aggregate use with other data.





- LEGEND**
- OLD GROWTH**
  - MATURE**
  - MID**
  - EARLY**
  - NOT CLASSIFIED**
  - BLM OWNERSHIP**
  - WATERSHED BOUNDARY**



SCALE 1:100000

Map 4

**SERAL STAGES IN THE MURPHY WATERSHED**

July 24, 1997  
Dennis Glover

Note: No warranty is made by the Bureau of Land Management as to the accuracy, reliability, or completeness of these data for individual use or aggregate use with other data.



114

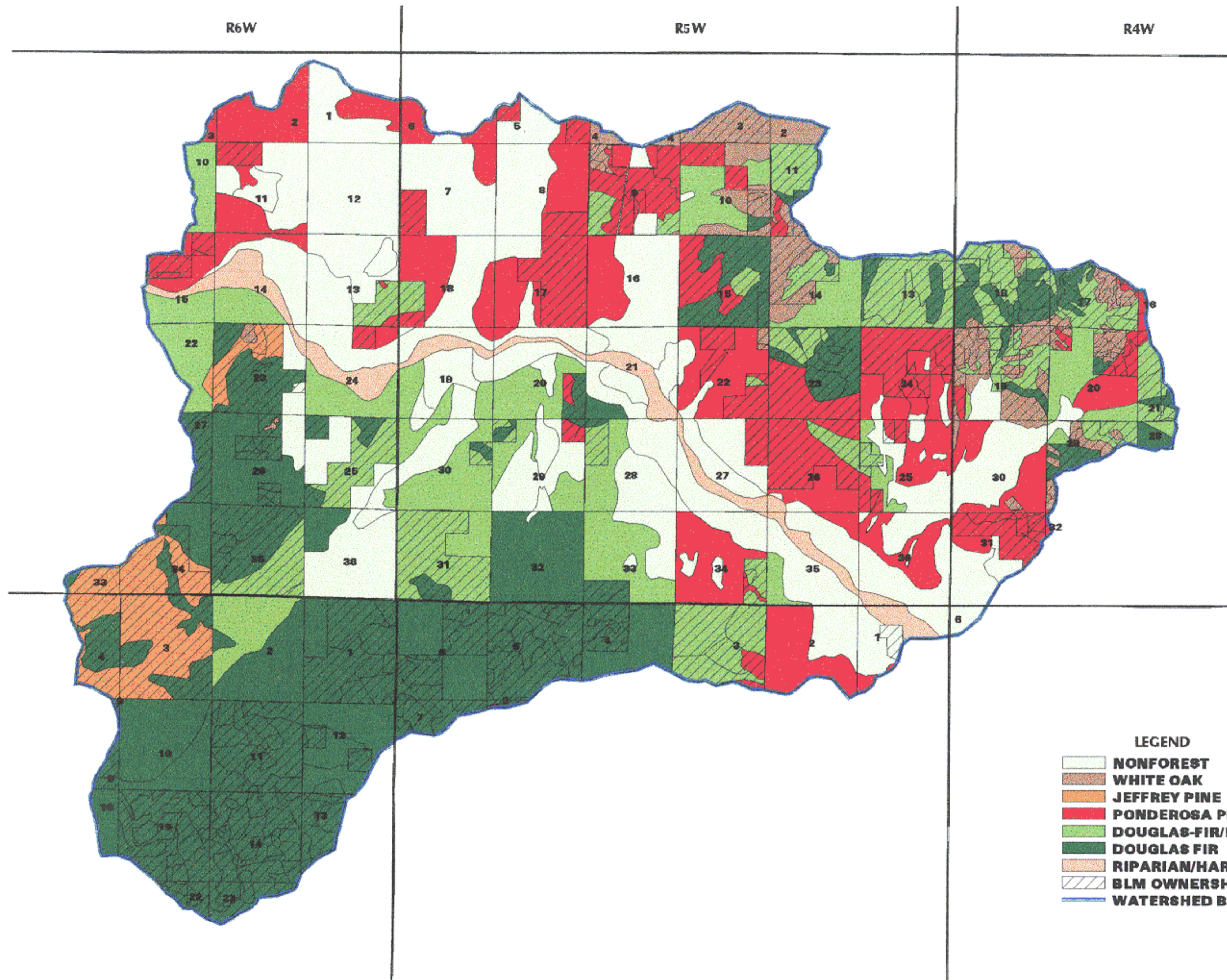
T375

T385

R6W

R5W

R4W



- LEGEND**
- NONFOREST**
  - WHITE OAK**
  - JEFFREY PINE**
  - PONDEROSA PINE**
  - DOUGLAS-FIR/PINE MIX**
  - DOUGLAS FIR**
  - RIPARIAN/HARDWOOD**
  - BLM OWNERSHIP**
  - WATERSHED BOUNDARY**



SCALE 1:100000

Map 5

**PLANT SERIES IN THE MURPHY WATERSHED**

July 24, 1997  
Dennis Glover

Note: No warranty is made by the Bureau of Land Management as to the accuracy, reliability, or completeness of these data for individual use or aggregate use with other data.



115

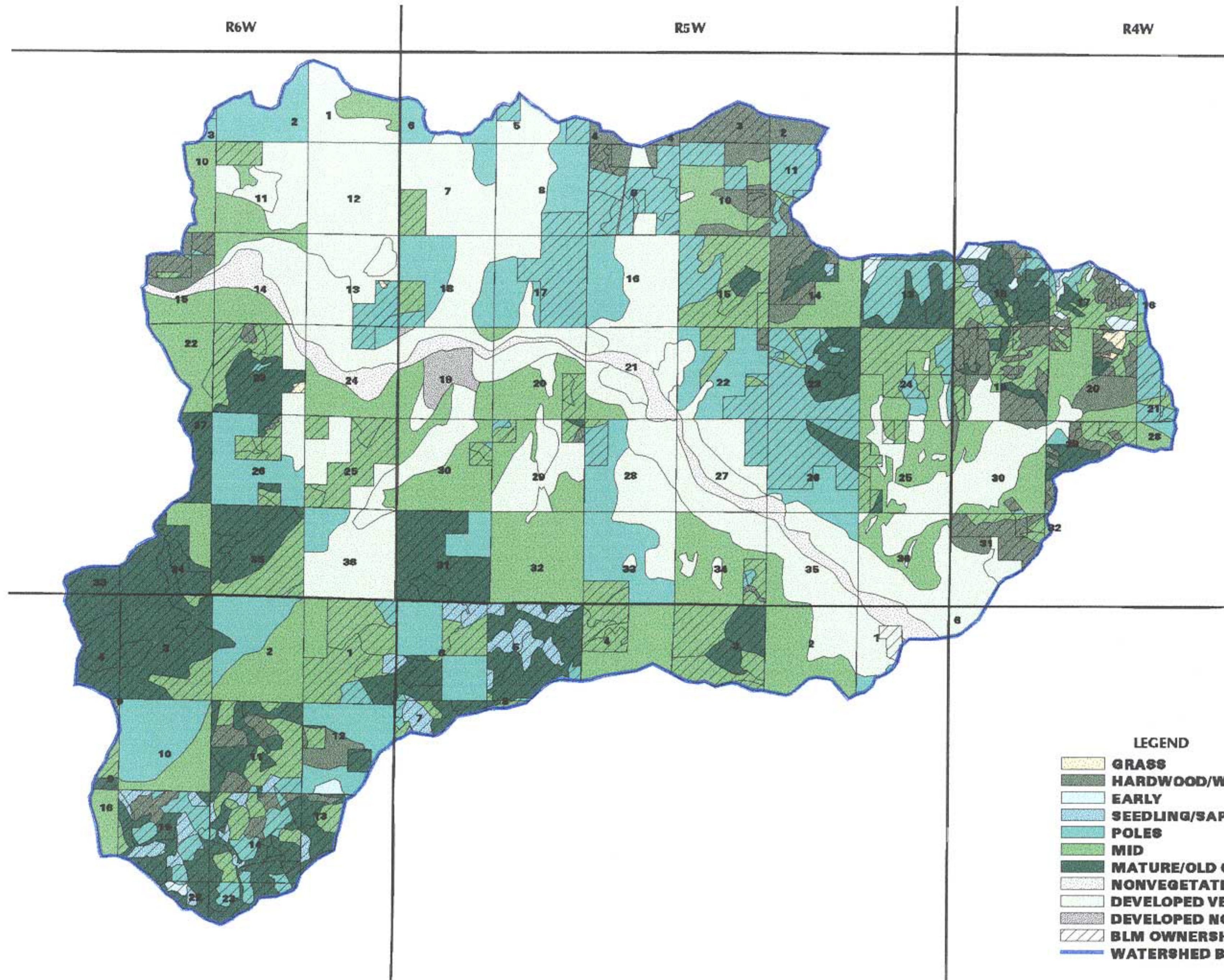
T375

T385

R6W

R5W

R4W



- LEGEND**
- GRASS
  - HARDWOOD/WOODLAND
  - EARLY
  - SEEDLING/SAPLING
  - POLES
  - MID
  - MATURE/OLD GROWTH
  - NONVEGETATED
  - DEVELOPED VEGETATED
  - BLM OWNERSHIP
  - WATERSHED BOUNDARY



SCALE 1:100000

Map 6

**VEGETATIVE CONDITION CLASSES  
IN THE MURPHY WATERSHED**

Note: No warranty is made by the Bureau of Land Management as to the accuracy, reliability, or completeness of these data for individual use or aggregate use with other data.



116

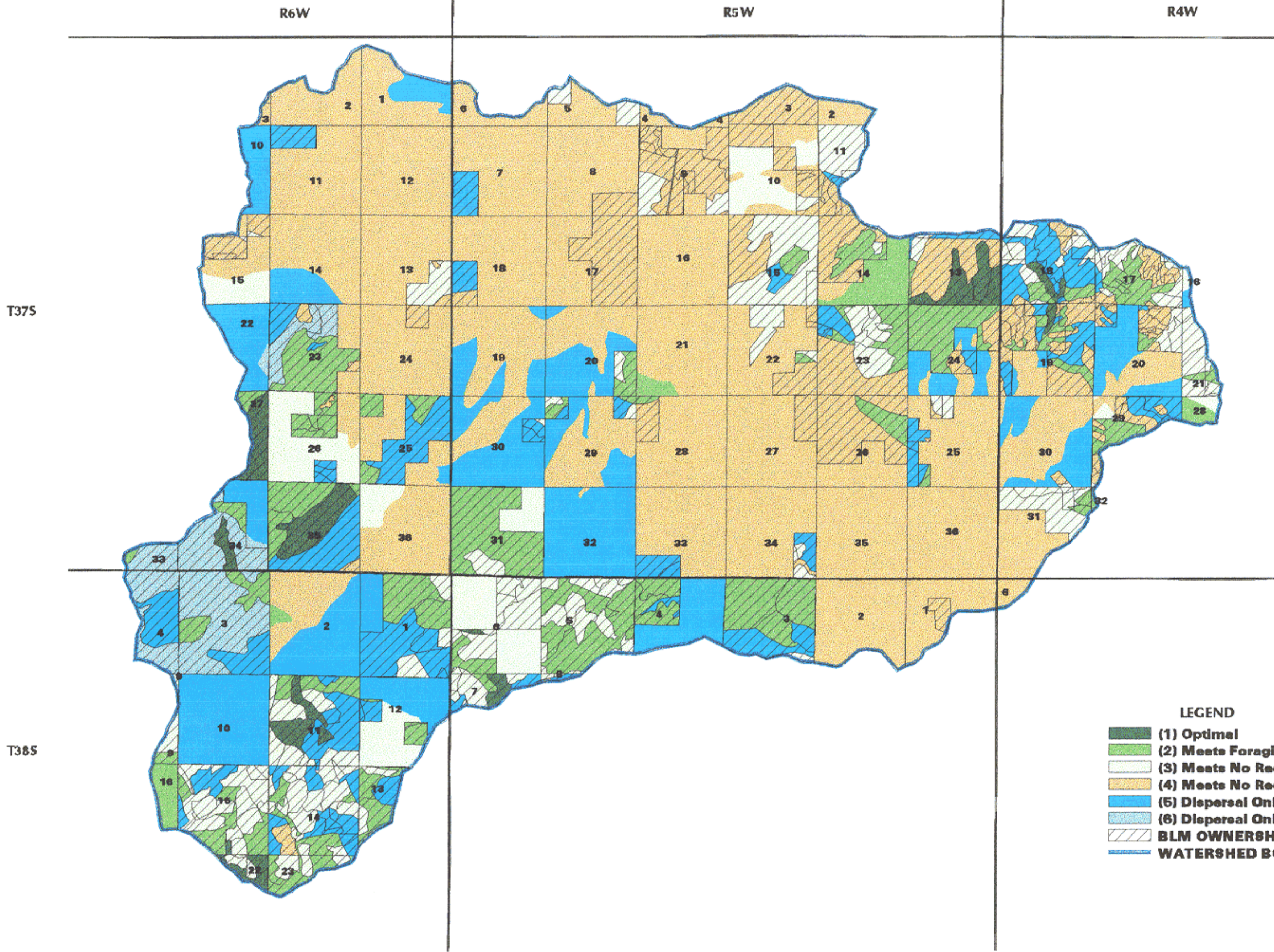
T375

T385

R6W

R5W

R4W



Map 7

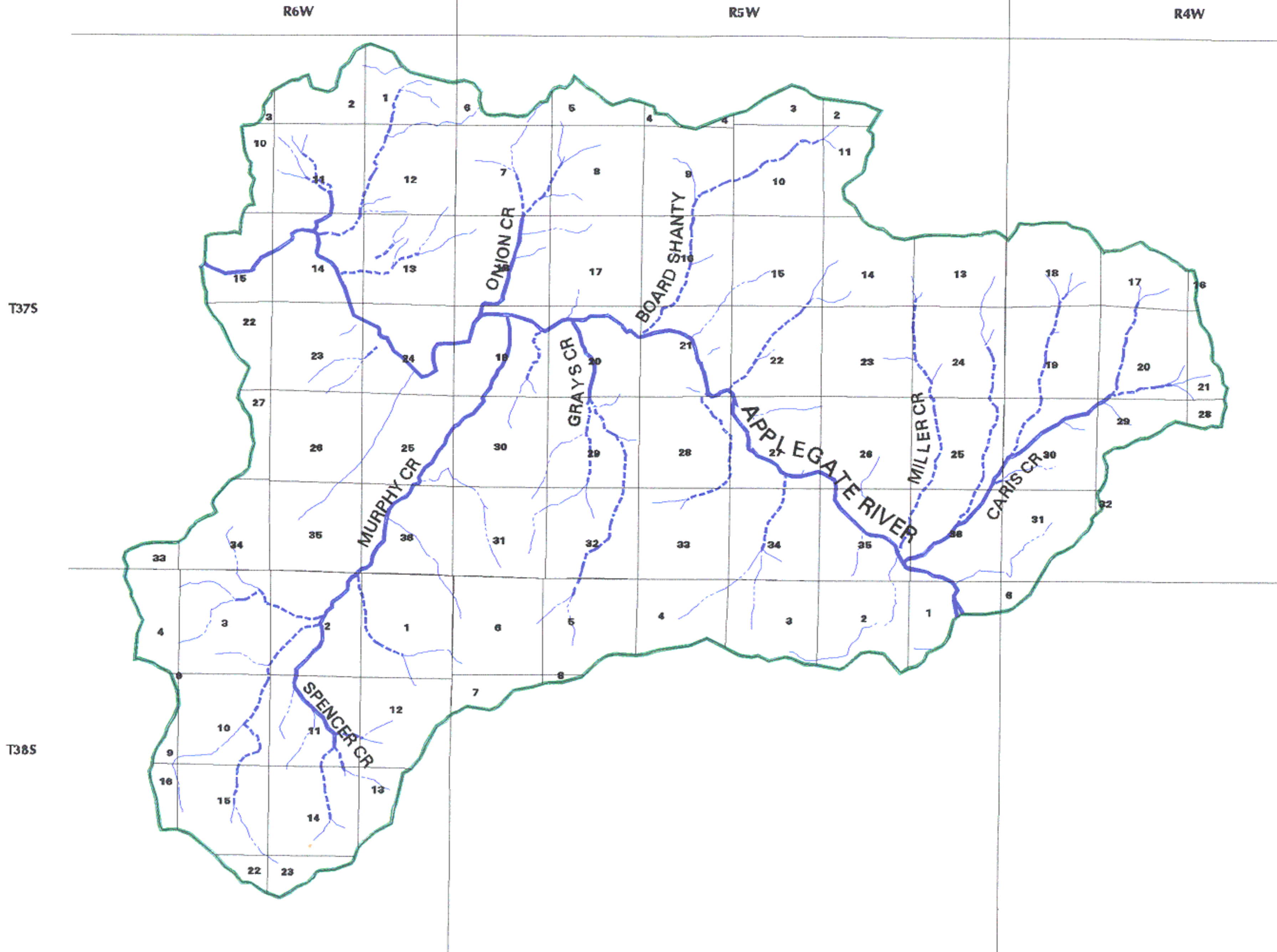
SCALE 1:100000

**SPOTTED OWL HABITAT RATING (McKELVEY)  
in the MURPHY WATERSHED**

July 24, 1997  
Dennis Glover

Note: No warranty is made by the Bureau of Land Management as to the accuracy, reliability, or completeness of these data for individual use or aggregate use with other data.





Map 8



SCALE 1:100000

**STREAM ORDERS (> 2) IN THE MURPHY WATERSHED**

- LEGEND**
- WATERSHED BOUNDARY
  - 3RD ORDER STREAMS
  - 4TH ORDER STREAMS
  - 5TH + ORDER STREAMS



02/02/99  
Dennis Glover

Note: No warranty is made by the Bureau of Land Management as to the accuracy, reliability, or completeness of these data for individual use or aggregate use with other data.

118

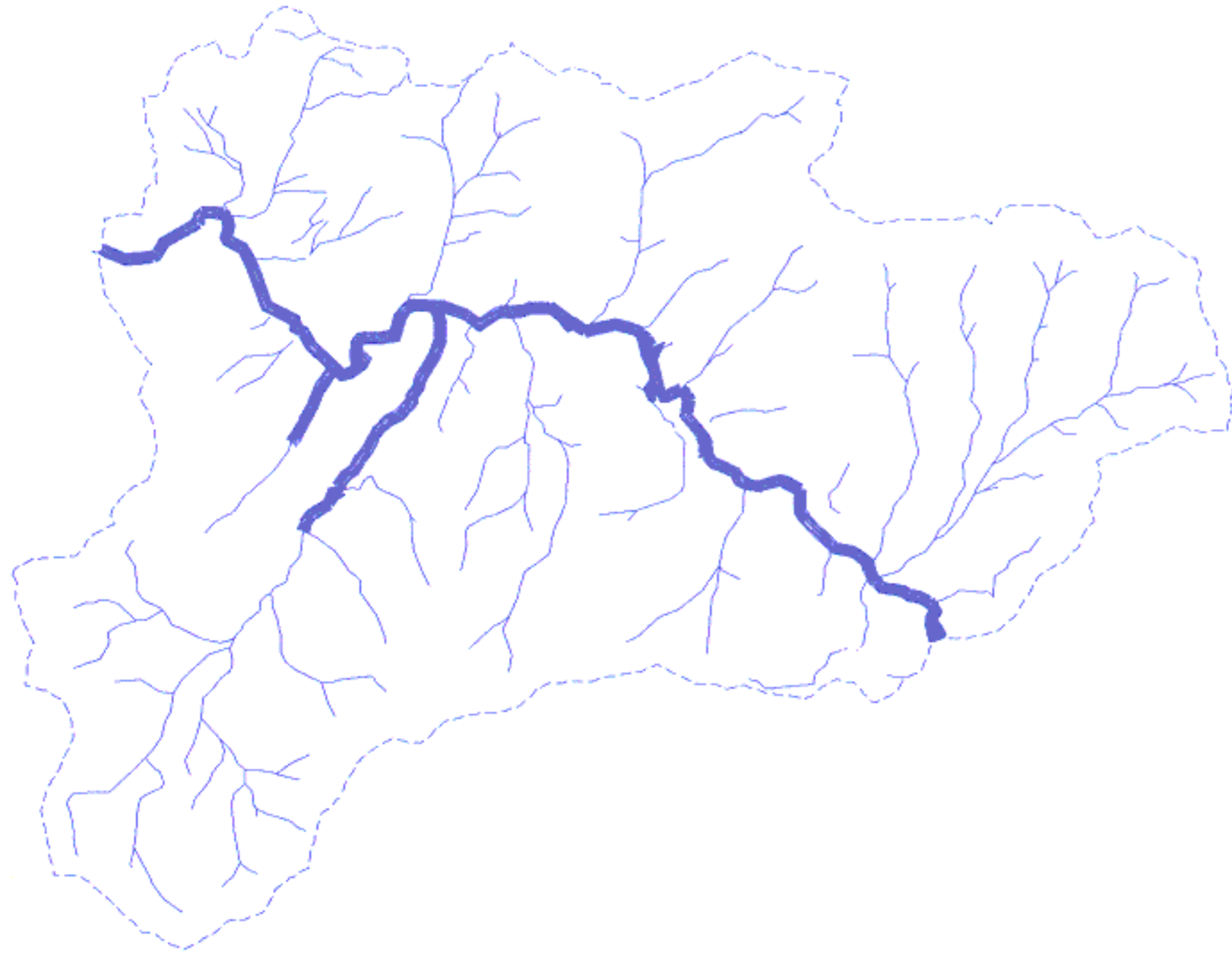
T375

T385

R6W

R5W

R4W



**COHO**



**CHINOOK**

Map 9

**APPROXIMATE DISTRIBUTION OF COHO & CHINOOK  
IN THE MURPHY WATERSHED**

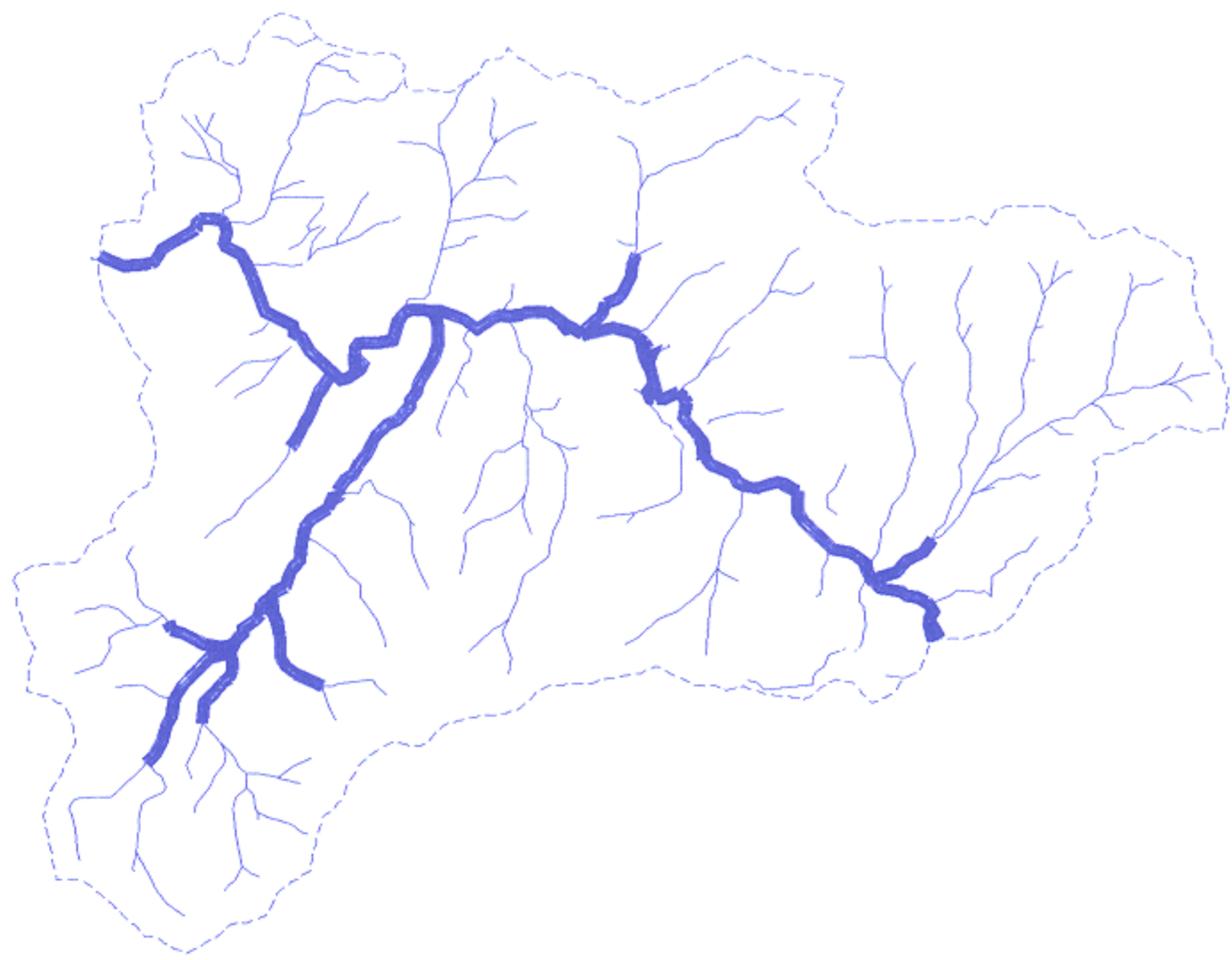
**LEGEND**

-  **WATERSHED BOUNDARY**
-  **DISTRIBUTION OF FISH**

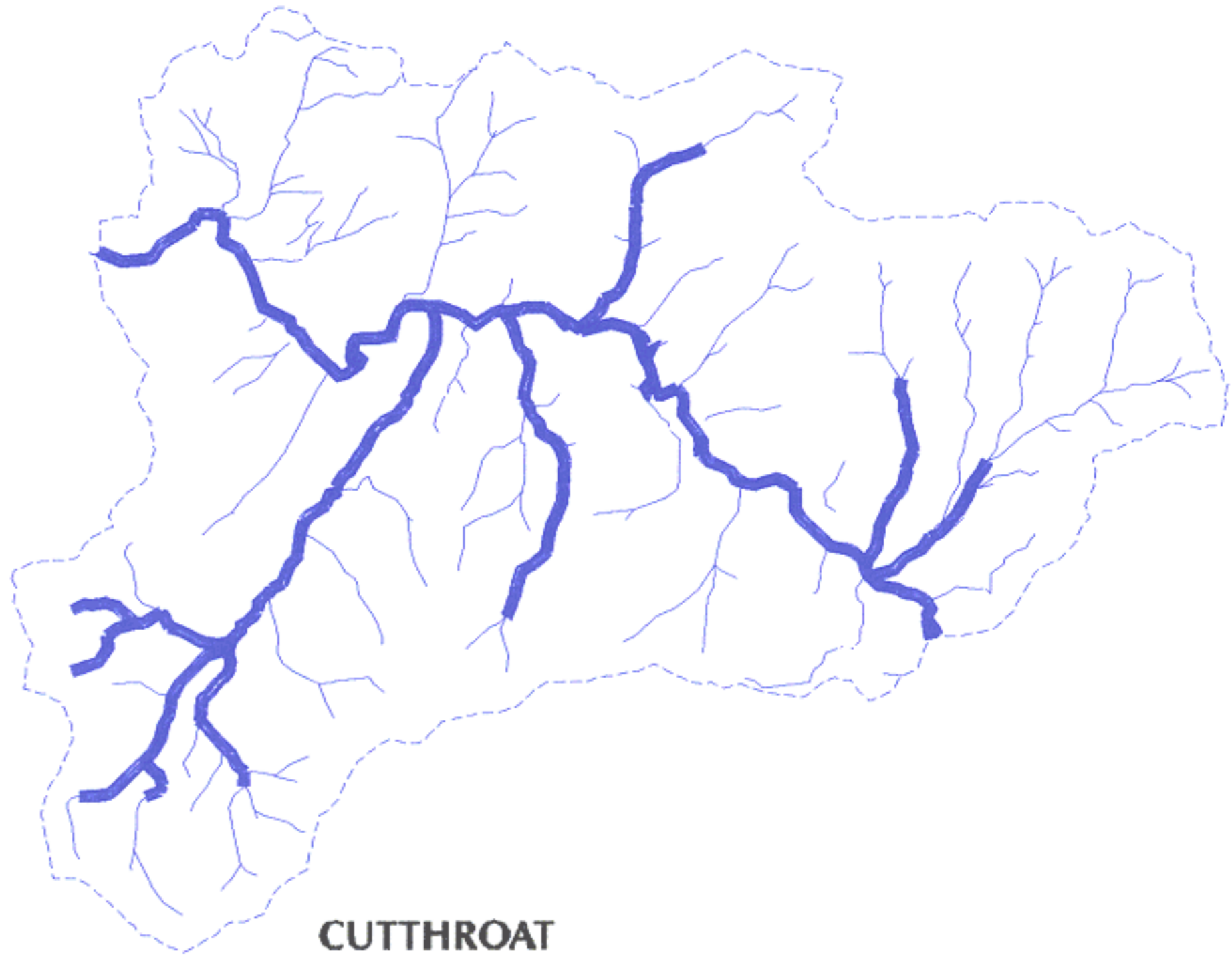


Note: No warranty is made by the Bureau of Land Management as to the accuracy, reliability, or completeness of these data for individual use or aggregate use with other data.

120



**STEELHEAD**



**CUTTHROAT**

Map 10

**APPROXIMATE DISTRIBUTION OF STEELHEAD  
& CUTTHROAT IN THE MURPHY WATERSHED**

**LEGEND**

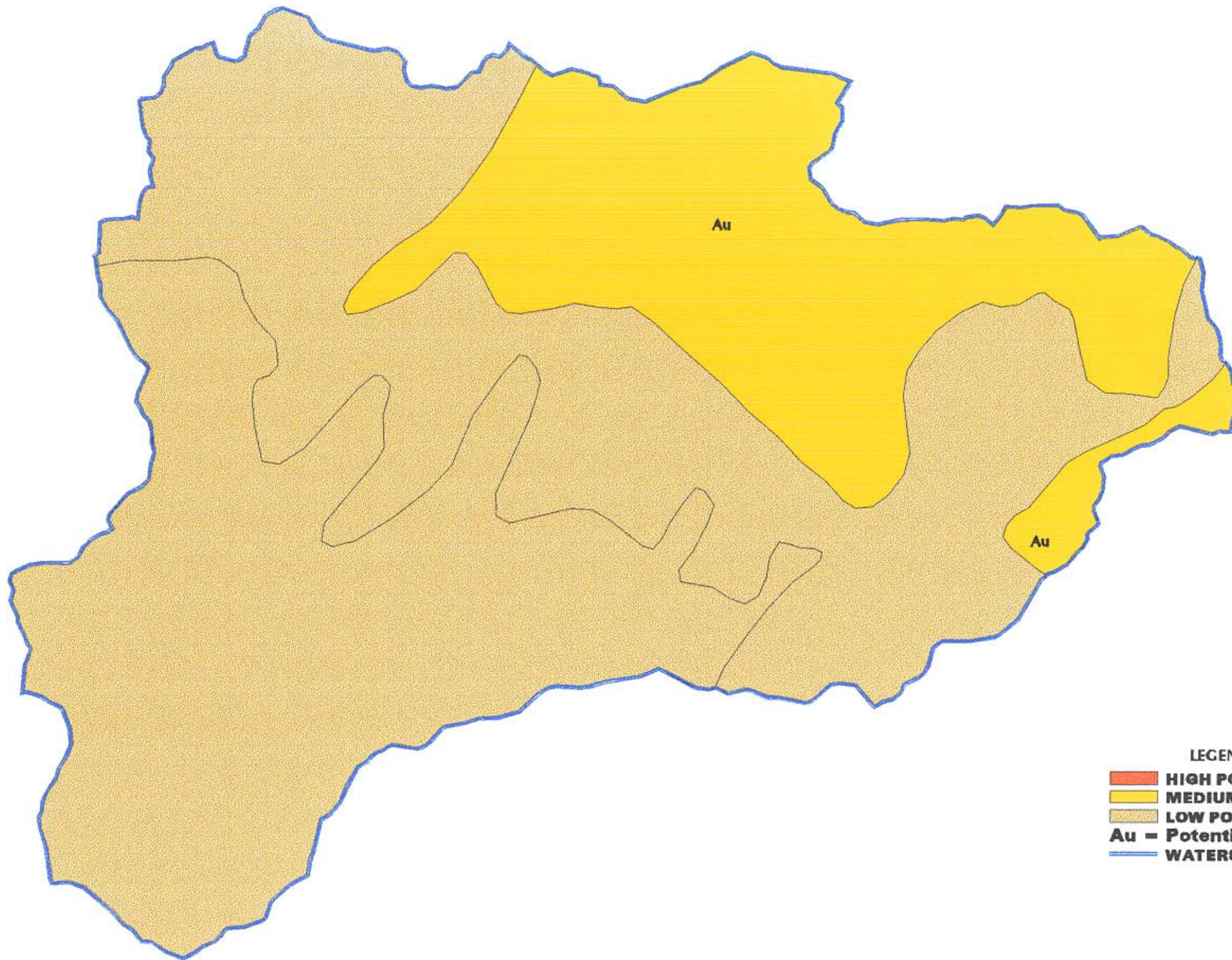
--- WATERSHED BOUNDARY

— DISTRIBUTION OF FISH



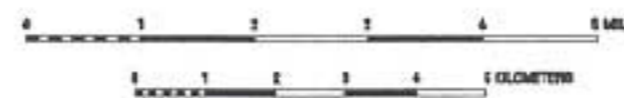
Note: No warranty is made by the Bureau of Land Management as to the accuracy, reliability, or completeness of these data for individual use or aggregate use with other data.

121



- LEGEND**
-  **HIGH POTENTIAL**
  -  **MEDIUM POTENTIAL**
  -  **LOW POTENTIAL**
  - Au = Potential for Gold**
  -  **WATERSHED BOUNDARY**

Map 11



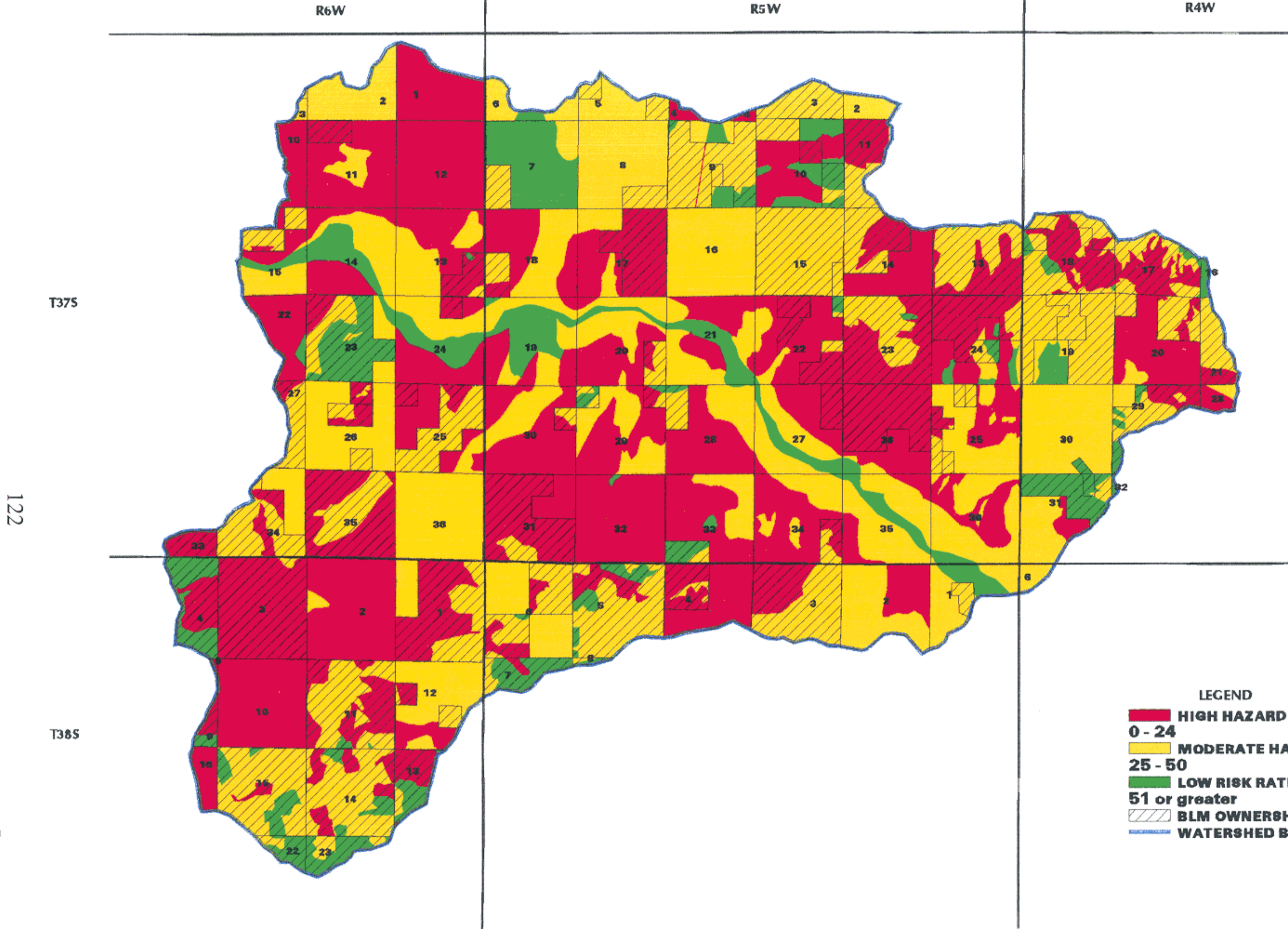
SCALE 1:100000

**MINERAL POTENTIAL IN THE MURPHY WATERSHED**



02/08/99  
Dennis Glover

Note: No warranty is made by the Bureau of Land Management as to the accuracy, reliability, or completeness of these data for individual use or aggregate use with other data.



**LEGEND**

- HIGH HAZARD RATING**  
**0 - 24**
- MODERATE HAZARD RATING**  
**25 - 50**
- LOW RISK RATING**  
**51 or greater**
- BLM OWNERSHIP**
- WATERSHED BOUNDARY**



SCALE 1:100000

Map 12

**FIRE HAZARD RATING in the MURPHY WATERSHED**

July 25, 1997  
Dennis Glover

Note: No warranty is made by the Bureau of Land Management as to the accuracy, reliability, or completeness of these data for individual use or aggregate use with other data.



R6W

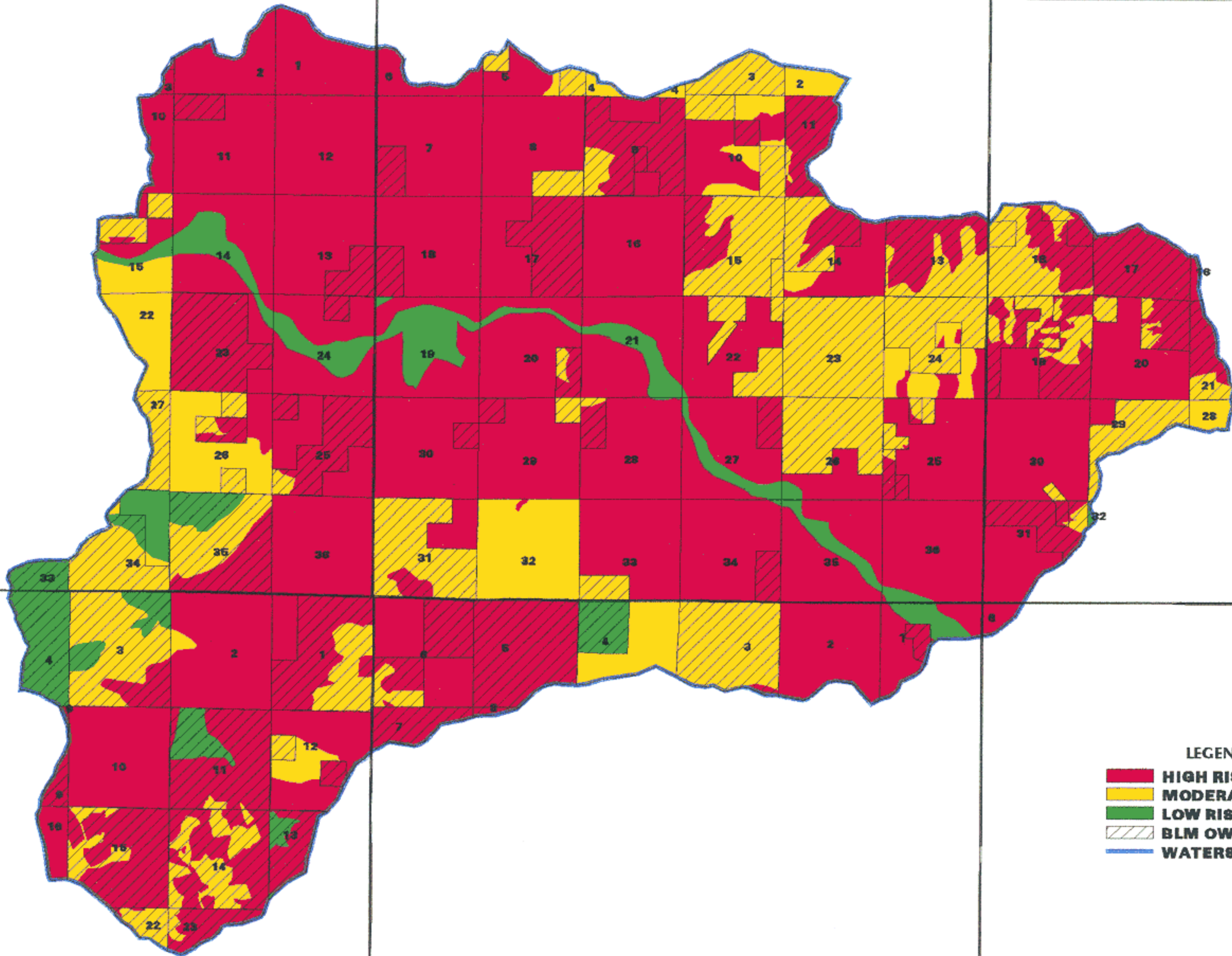
R5W

R4W

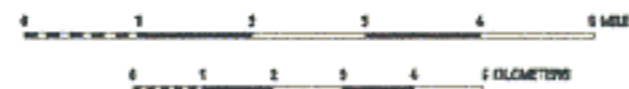
T37S

123

T38S



- LEGEND**
- HIGH RISK RATING**
  - MODERATE RISK RATING**
  - LOW RISK RATING**
  - BLM OWNERSHIP**
  - WATERSHED BOUNDARY**



SCALE 1:100000

Map 13

**FIRE RISK RATING in the MURPHY WATERSHED**

Note: No warranty is made by the Bureau of Land Management as to the accuracy, reliability, or completeness of these data for individual use or aggregate use with other data.



R6W

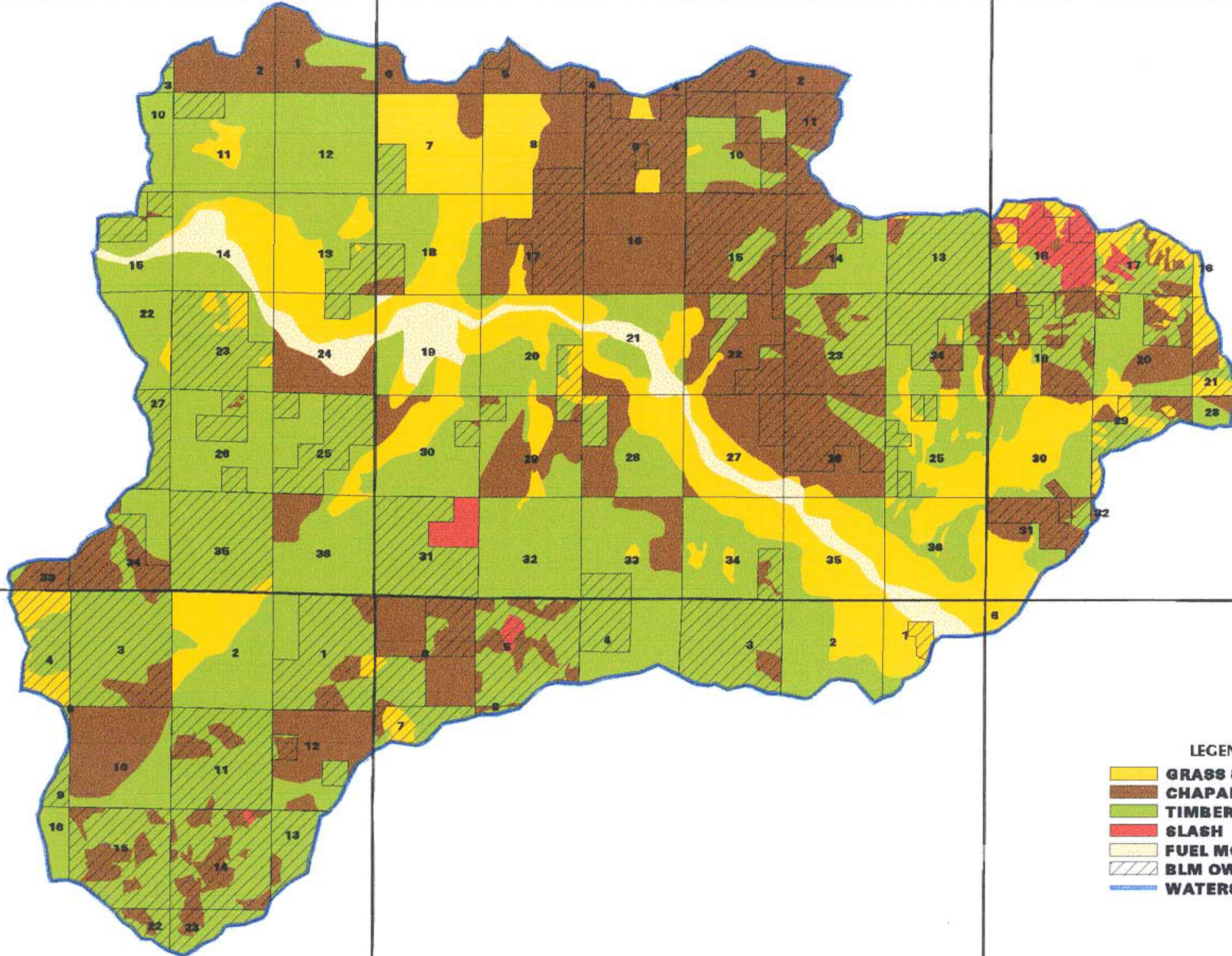
R5W

R4W

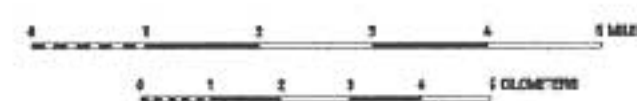
T375

124

T385



- LEGEND**
- GRASS & GRASS DOMINANT
  - CHAPARRAL & SHRUB FIELDS
  - TIMBER LITTER
  - SLASH
  - FUEL MODEL NOT APPLICABLE
  - BLM OWNERSHIP
  - WATERSHED BOUNDARY



SCALE 1:100000

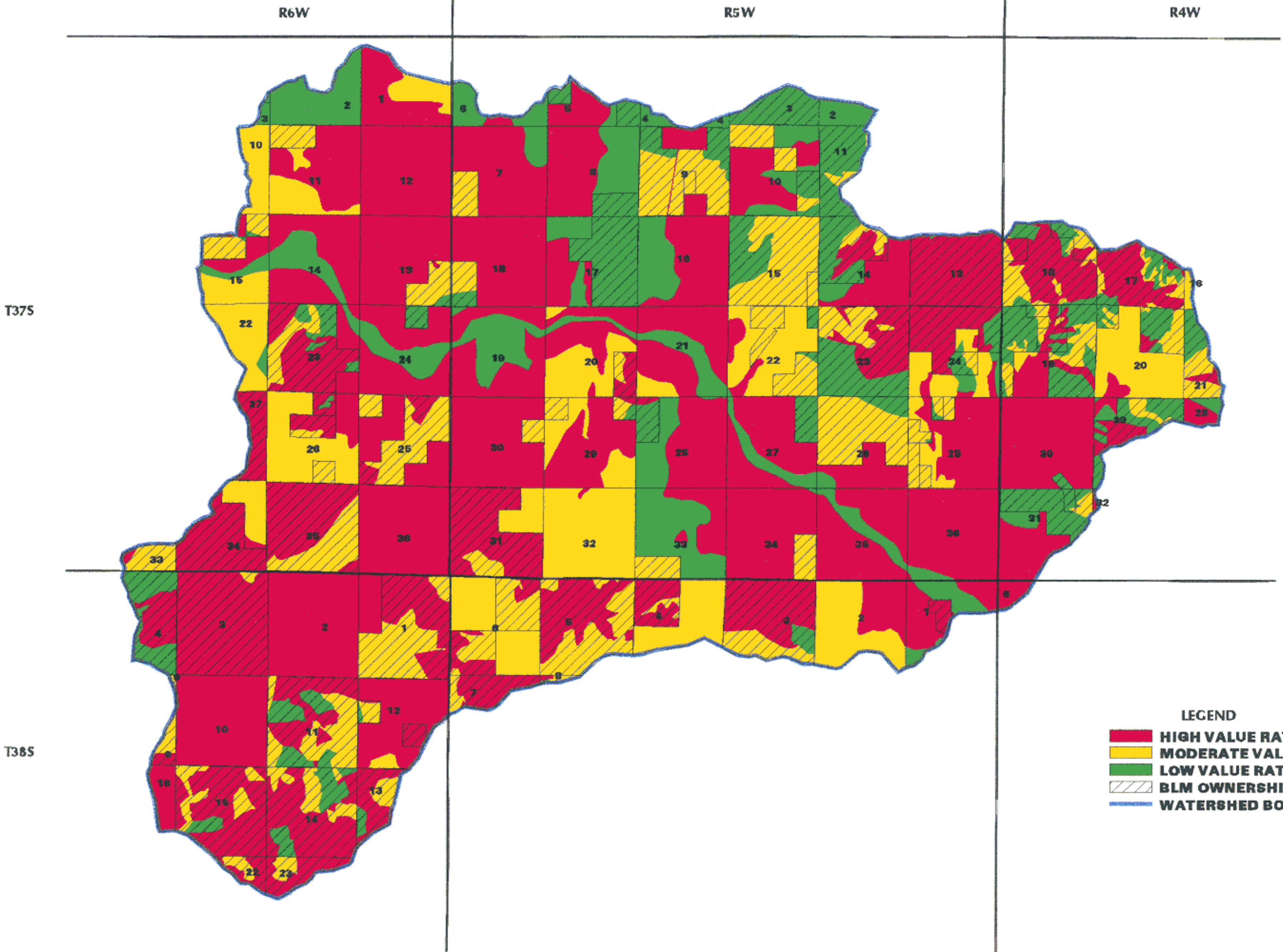
Map 14

### FIRE FUEL MODELS IN THE MURPHY WATERSHED

July 25, 1997  
Dennis Glover

Note: No warranty is made by the Bureau of Land Management as to the accuracy, reliability, or completeness of these data for individual use or aggregate use with other data.





**LEGEND**

- HIGH VALUE RATING**
- MODERATE VALUE RATING**
- LOW VALUE RATING**
- BLM OWNERSHIP**
- WATERSHED BOUNDARY**



SCALE 1:100000

Map 15

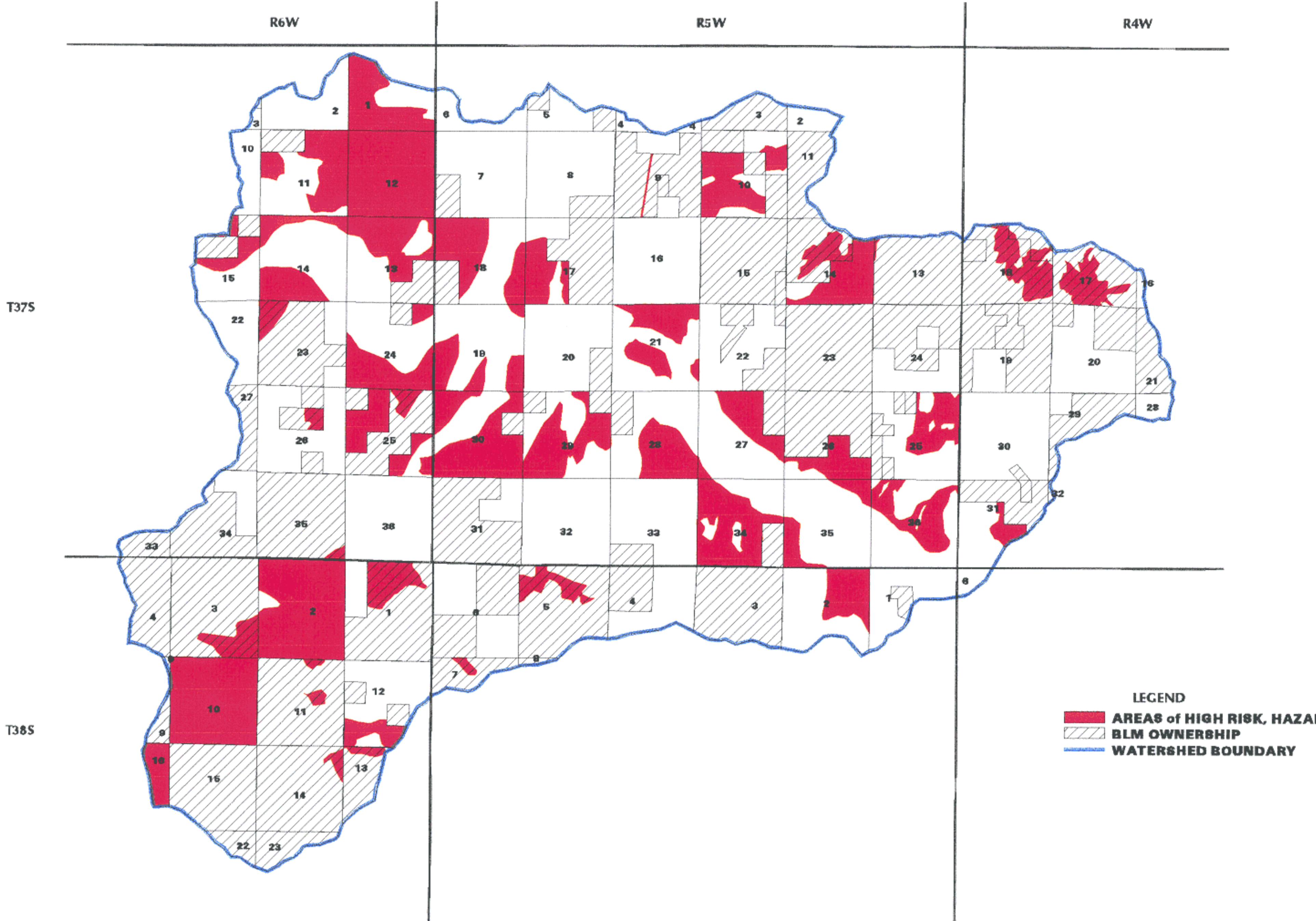
**FIRE VALUE RATING in the MURPHY WATERSHED**

July 25, 1997  
Dennis Glover

Note: No warranty is made by the Bureau of Land Management as to the accuracy, reliability, or completeness of these data for individual use or aggregate use with other data.







**LEGEND**  
 ■ AREAS of HIGH RISK, HAZARD, VALUE  
 ▨ BLM OWNERSHIP  
 — WATERSHED BOUNDARY



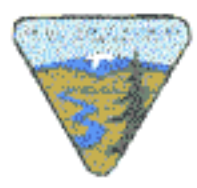
SCALE 1:100000

Map 16

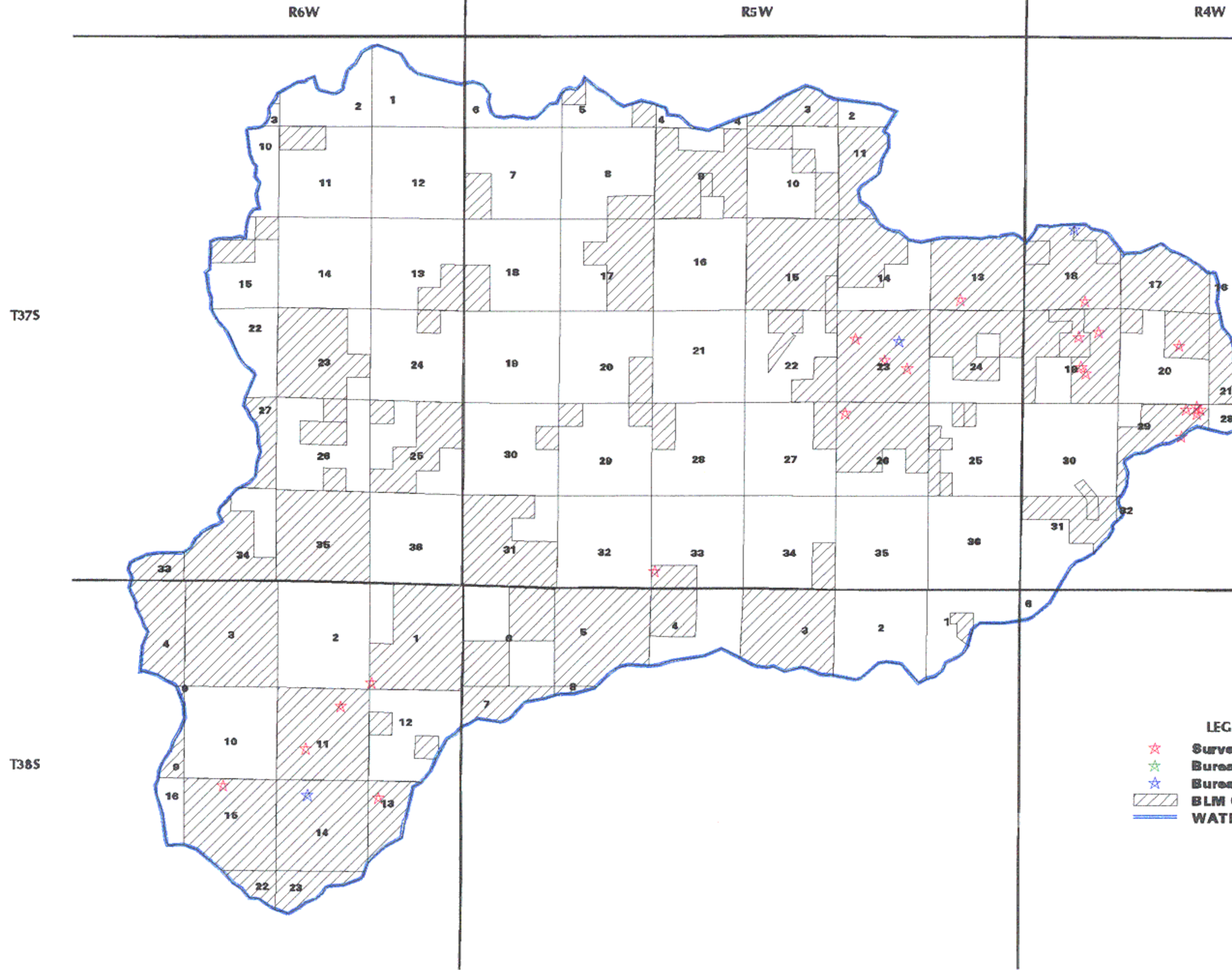
**AREAS of HIGH HAZARD, RISK and VALUE-AT-RISK RATINGS in the MURPHY WATERSHED**

July 25, 1997  
 Dennis Glover

Note: No warranty is made by the Bureau of Land Management as to the accuracy, reliability, or completeness of these data for individual use or aggregate use with other data.



126



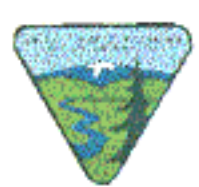
- LEGEND**
- ★ Survey & Manage
  - ★ Bureau Sensitive
  - ★ Bureau Assessment
  - ▨ BLM OWNERSHIP
  - WATERSHED BOUNDARY



SCALE 1:100000

Map 17

**TEP SITES  
IN THE MURPHY WATERSHED**



02/08/99  
Dennis Glover

Note: No warranty is made by the Bureau of Land Management as to the accuracy, reliability, or completeness of these data for individual use or aggregate use with other data.