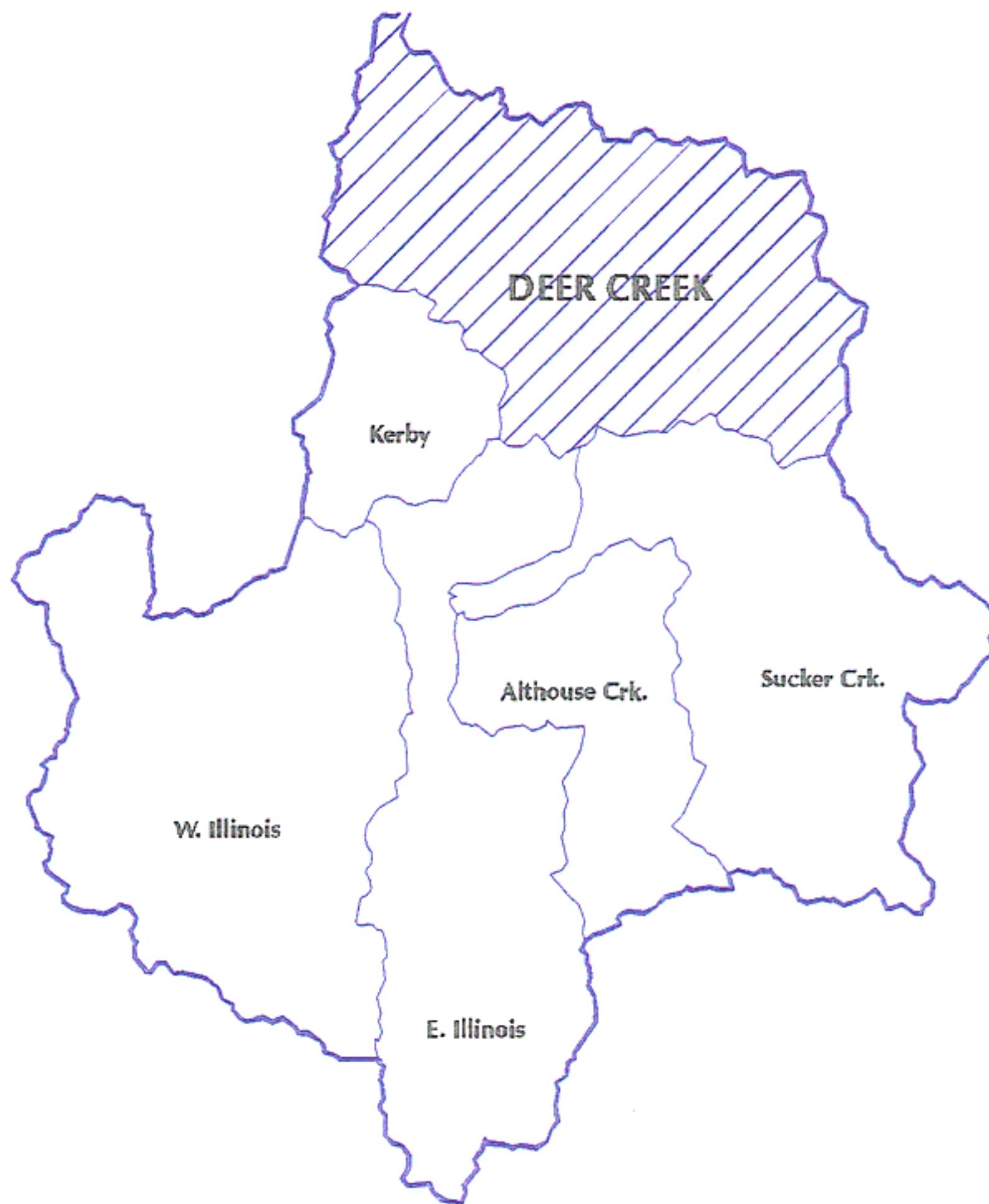
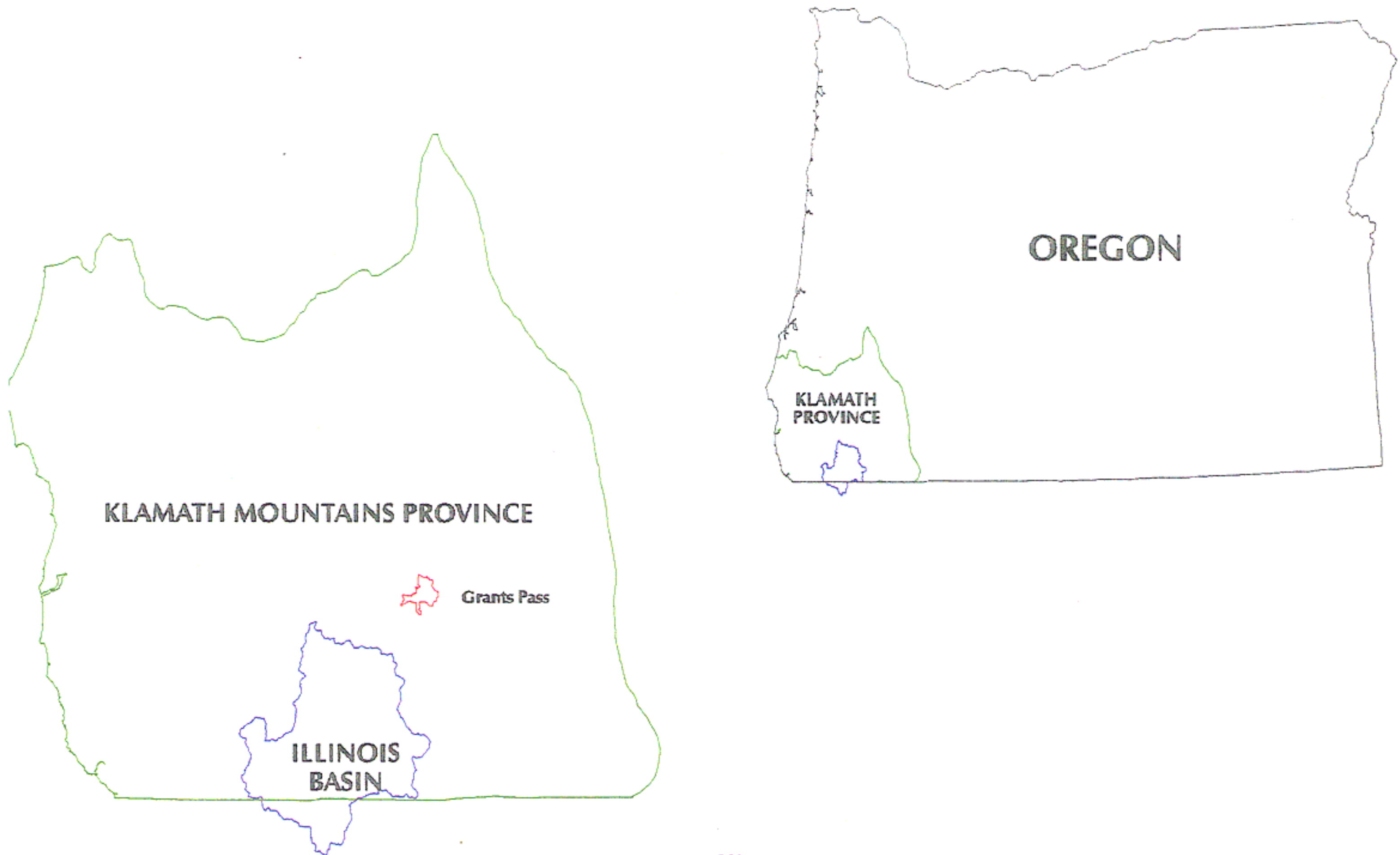


APPENDIX A: MAPS



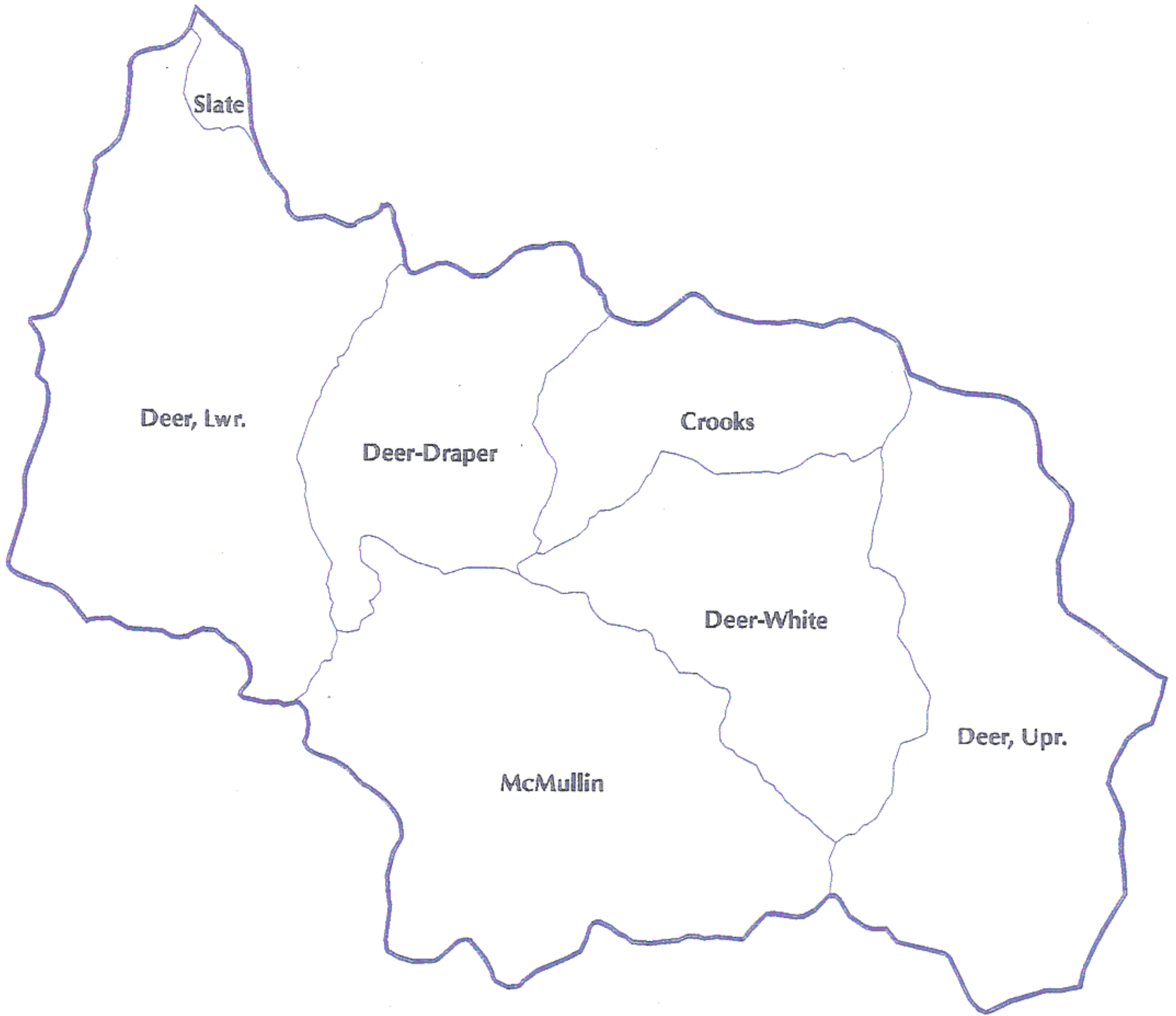
October 1996

John McGlothlin

**GENERAL LOCATION OF THE
DEER CREEK WATERSHED**

MAP 1







SCALE 1:140000

**SUB-WATERSHEDS OF THE
DEER CREEK WATERSHED
(BASED ON HUC6)**



October 1996

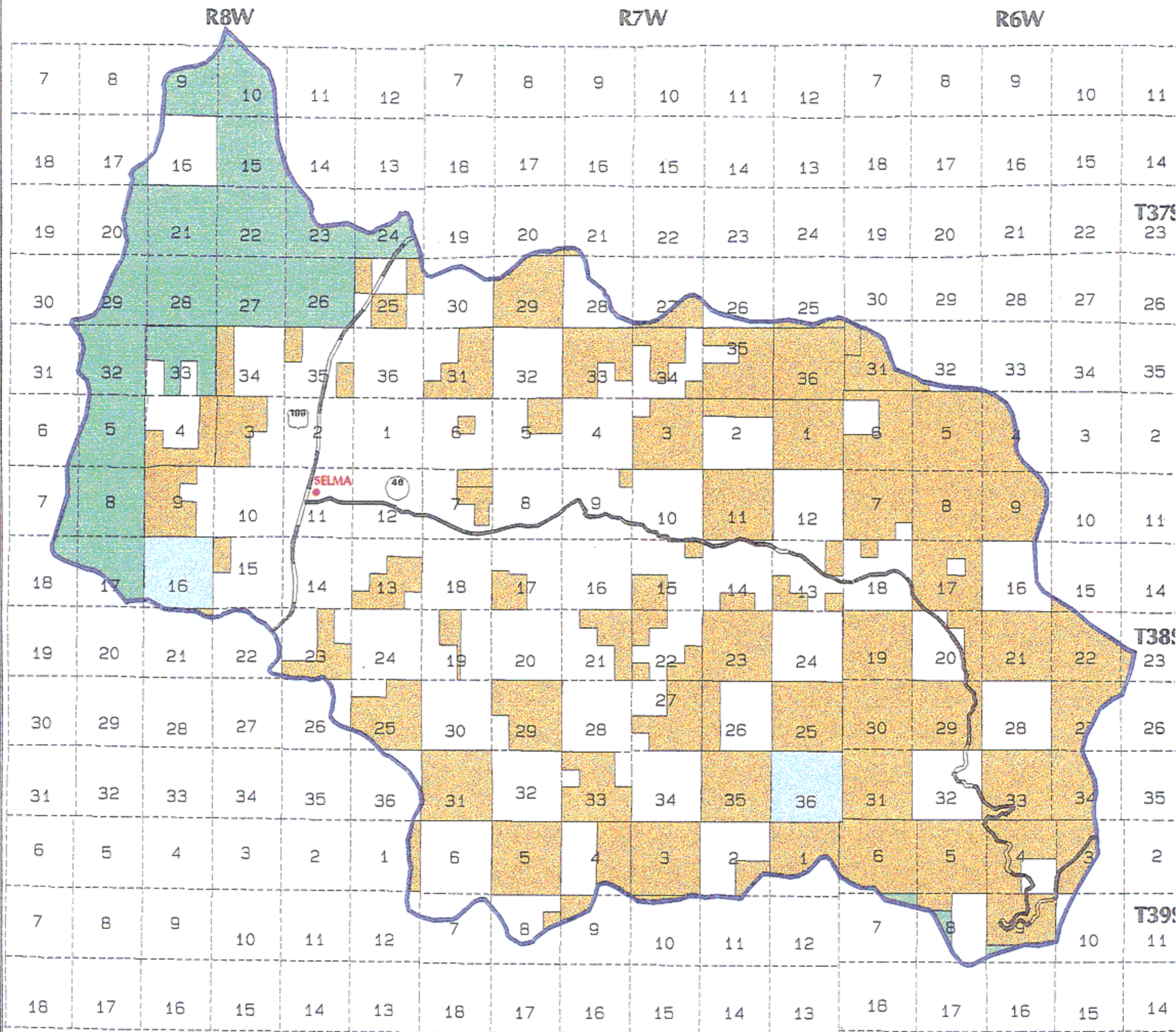
John McGlothlin

LEGEND	
	Subwatershed Boundary
	Watershed Boundary

MAP 2



Note: No warranty is made by the Bureau of Land Management as to the accuracy, reliability, or completeness of these data for individual use or aggregate use with other data.



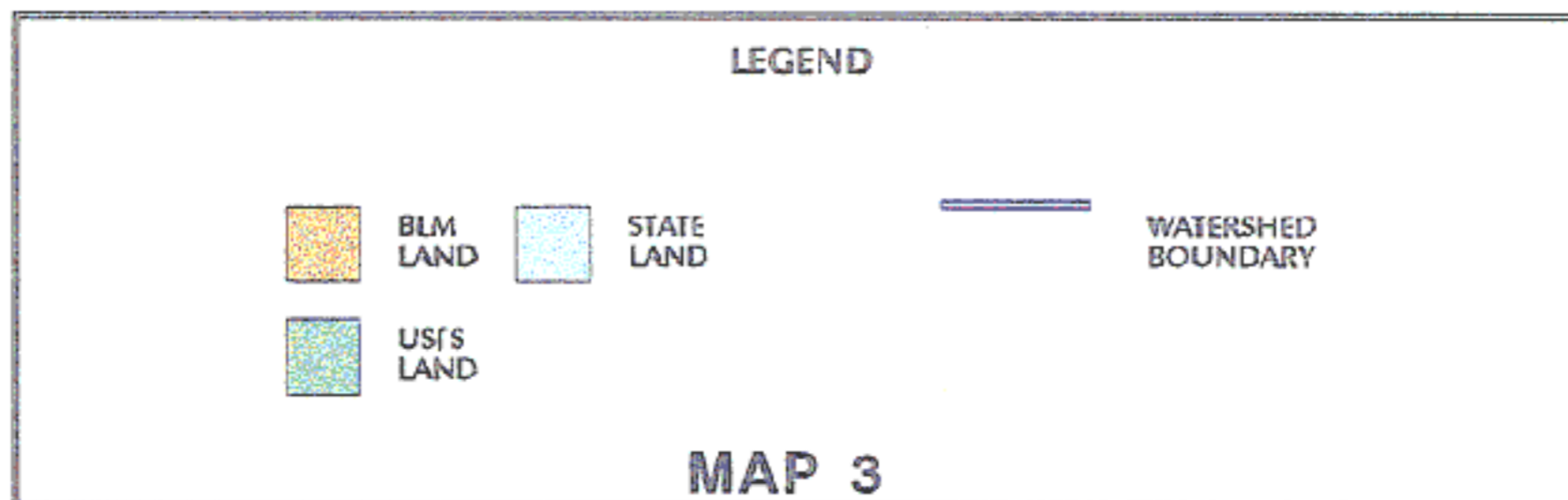
SCALE 1:140000

GOVERNMENT OWNERSHIP IN THE DEER CREEK WATERSHED

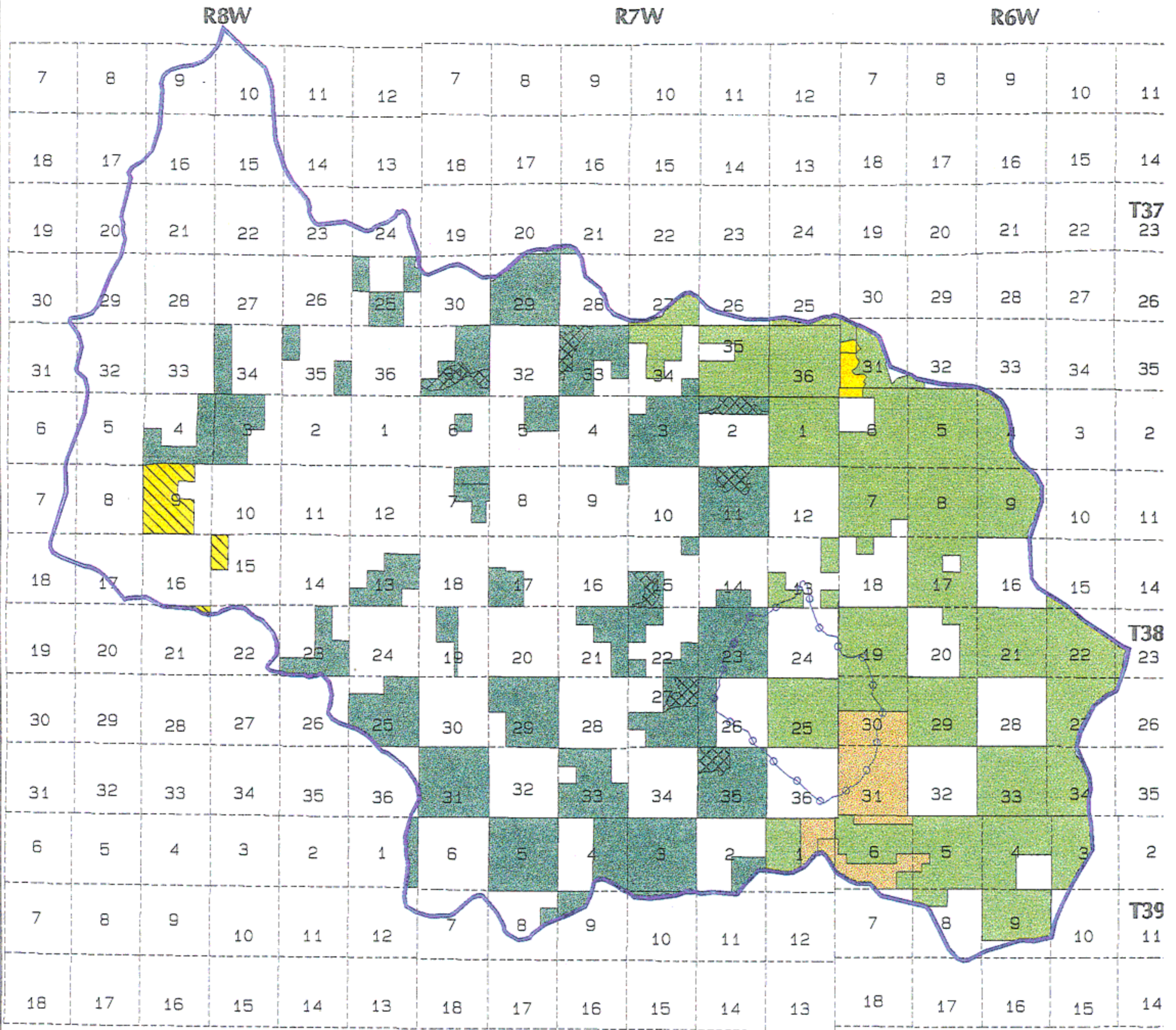


July 1996

John McClothlin



Note: No warranty is made by the Bureau of Land Management as to the accuracy, reliability, or completeness of these data for individual use or aggregate use with other data.



SCALE 1:140000

**LAND USE ALLOCATIONS ON BLM
LANDS IN THE DEER CREEK WATERSHED**



October 1996

John McGlothlin

LEGEND

LSR	ACEC	100-Acre Owlcore	Watershed Boundary
Murrelet Reserve	RNA	Matrix	Deferred Watershed Boundary

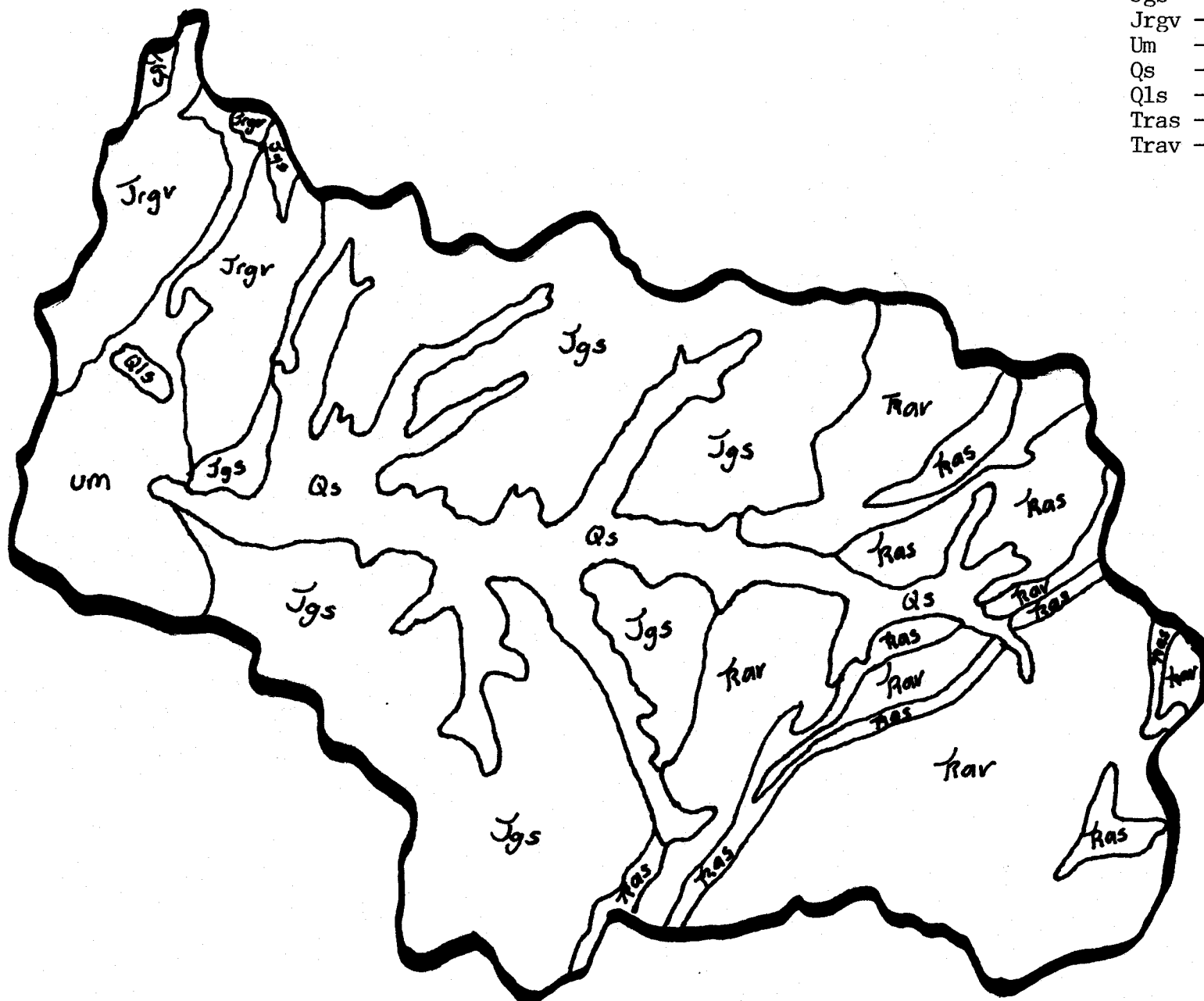
MAP 4

Note: No warranty is made by the Bureau of Land Management as to the accuracy, reliability, or completeness of these data for individual use or aggregate use with other data.

DEER CREEK WAU
GEOLOGY MAP

Geological Legend

- Jgs - Metasedimentary rock
- Jrgv - Metavolcanic
- Um - Ultramafic
- Qs - Quaternary Sediments
- Qls - Landslide Deposit
- Tras - Applegate group sedimentary
- Trav - Applegate group volcanics

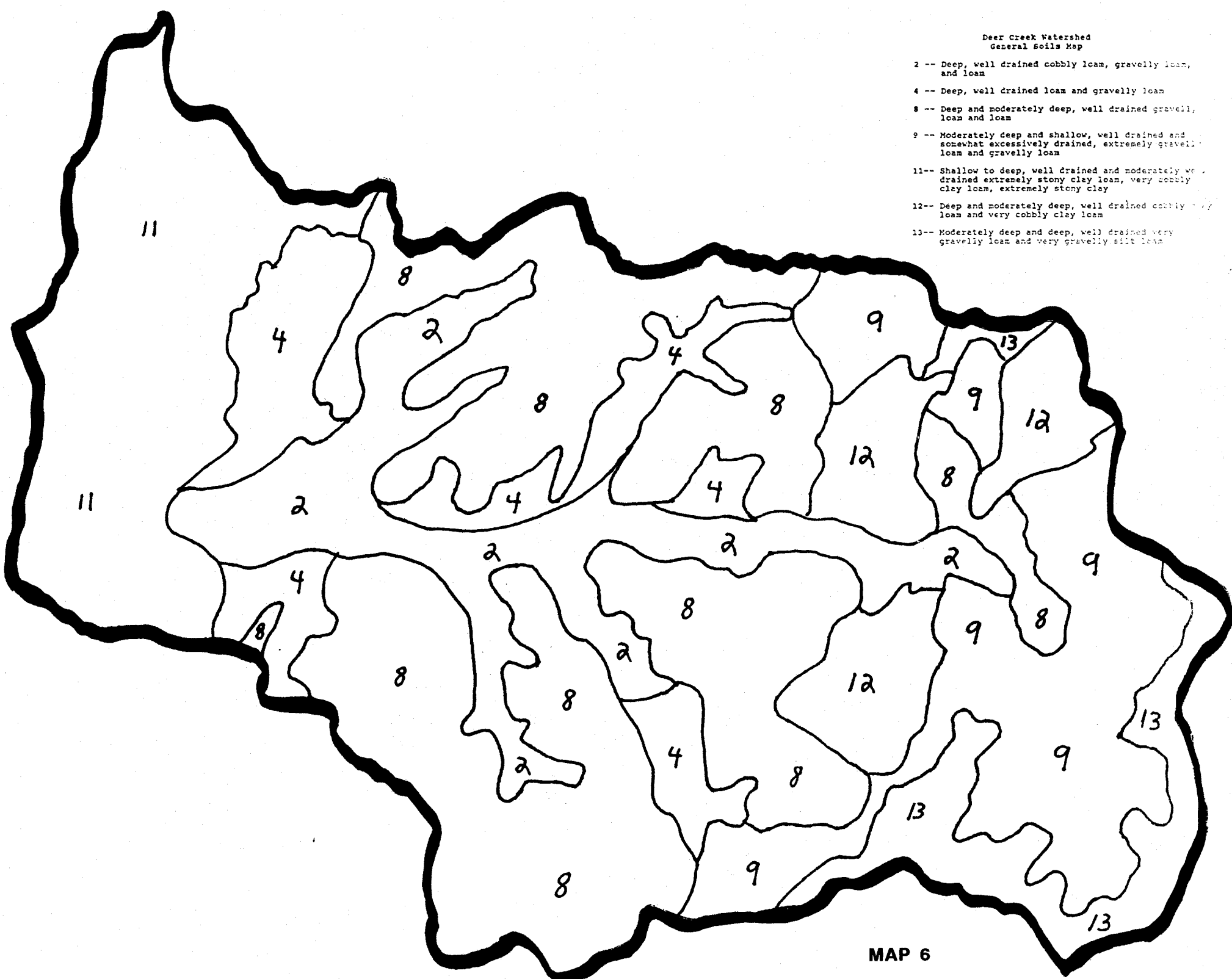


SCALE = 1:62,500

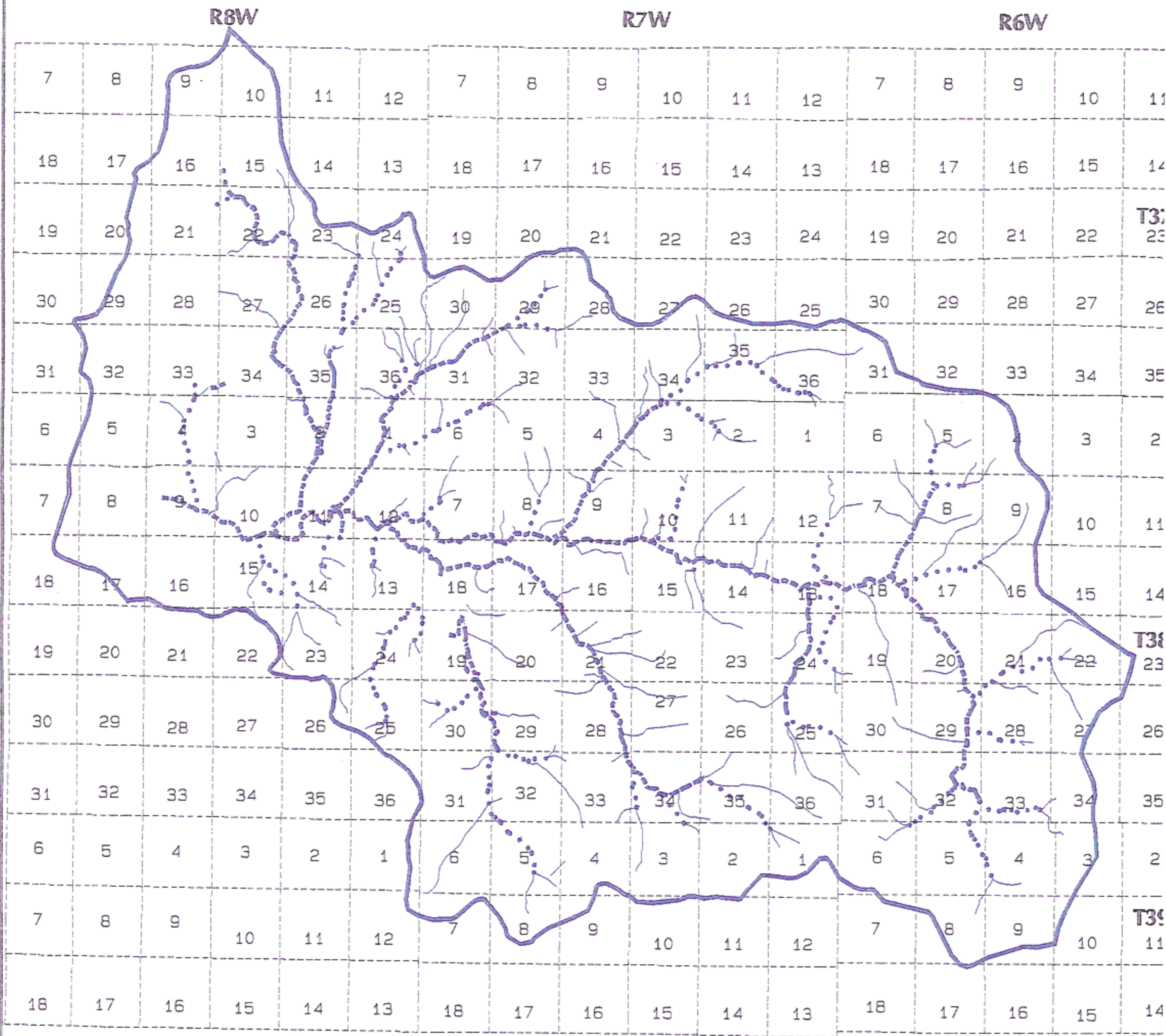
MAP 5

Deer Creek Watershed
General Soils Map

- 2 -- Deep, well drained cobbly loam, gravelly loam, and loam
- 4 -- Deep, well drained loam and gravelly loam
- 8 -- Deep and moderately deep, well drained gravelly loam and loam
- 9 -- Moderately deep and shallow, well drained and somewhat excessively drained, extremely gravelly loam and gravelly loam
- 11-- Shallow to deep, well drained and moderately well drained extremely stony clay loam, very cobbly clay loam, extremely stony clay
- 12-- Deep and moderately deep, well drained cobbly loam and very cobbly clay loam
- 13-- Moderately deep and deep, well drained very gravelly loam and very gravelly silt loam



MAP 6



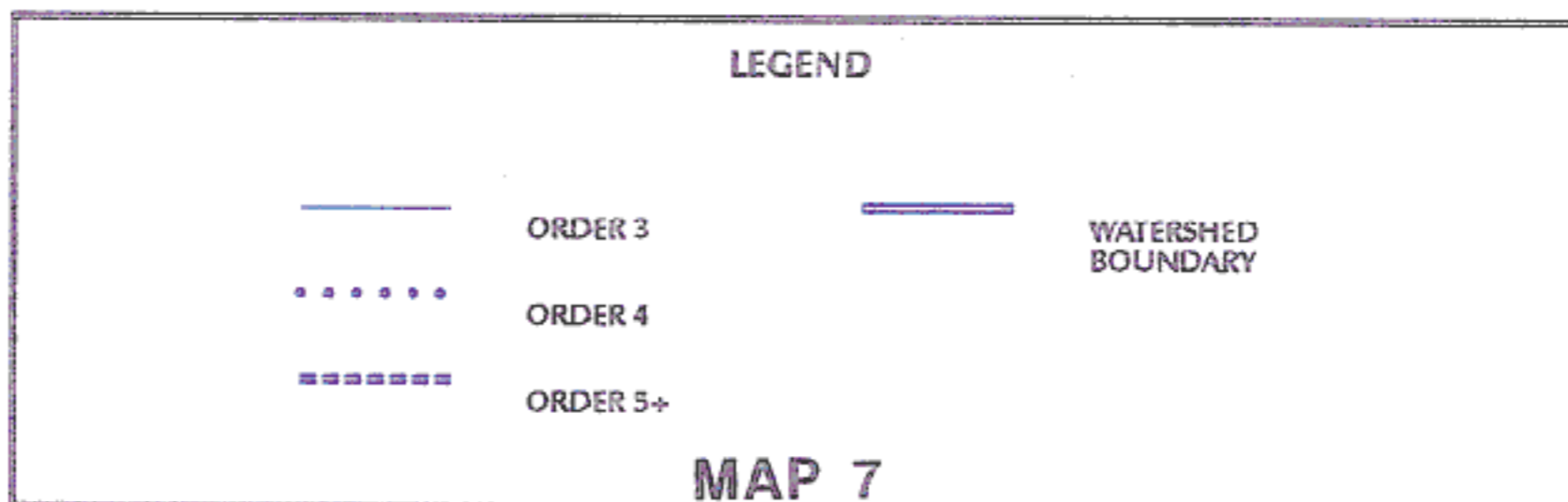
SCALE 1:140000

**STREAM ORDERS (> 2) ON BLM
LANDS IN THE DEER CREEK WATERSHED**



October 1996

John McGlothlin

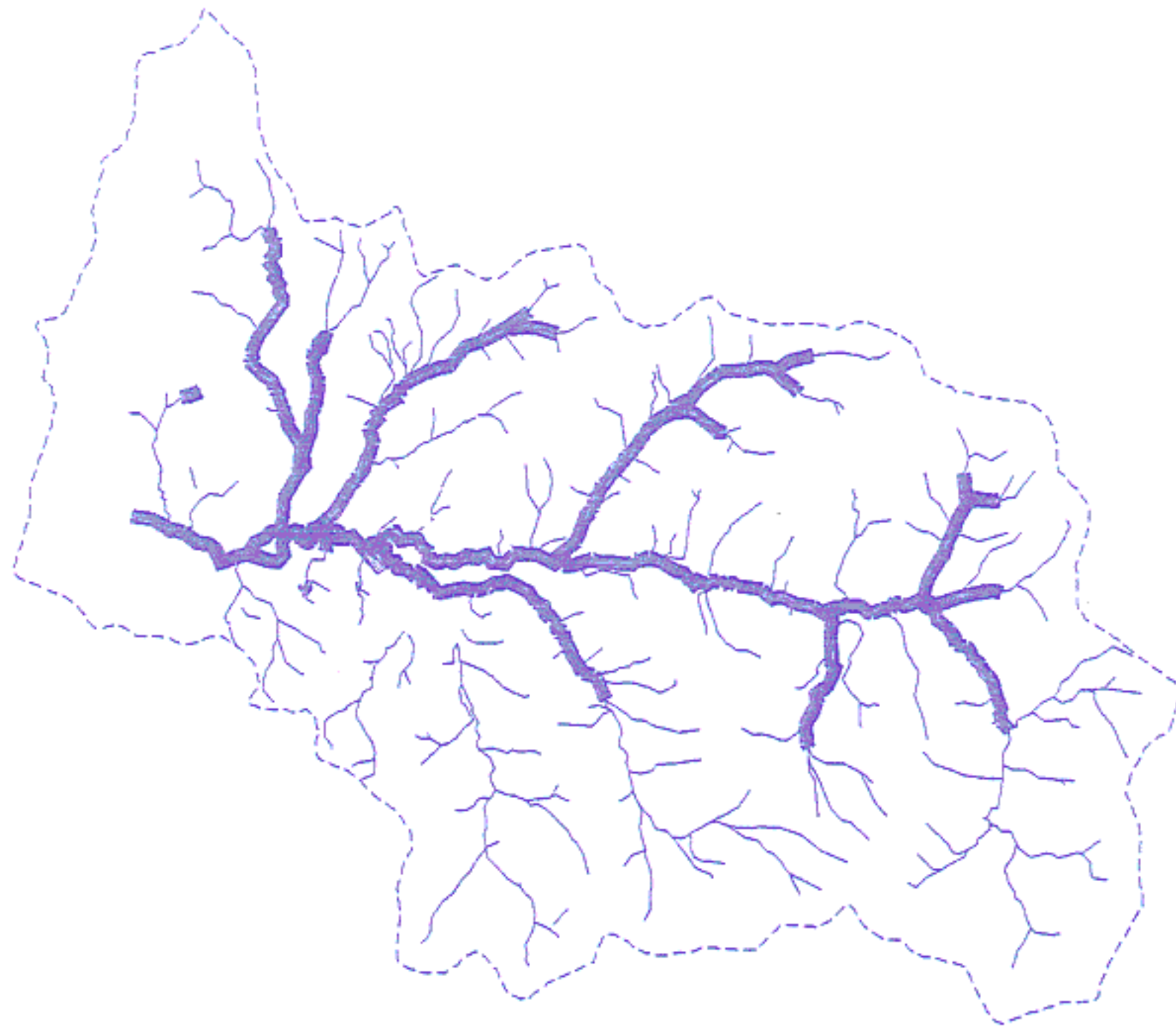


MAP 7

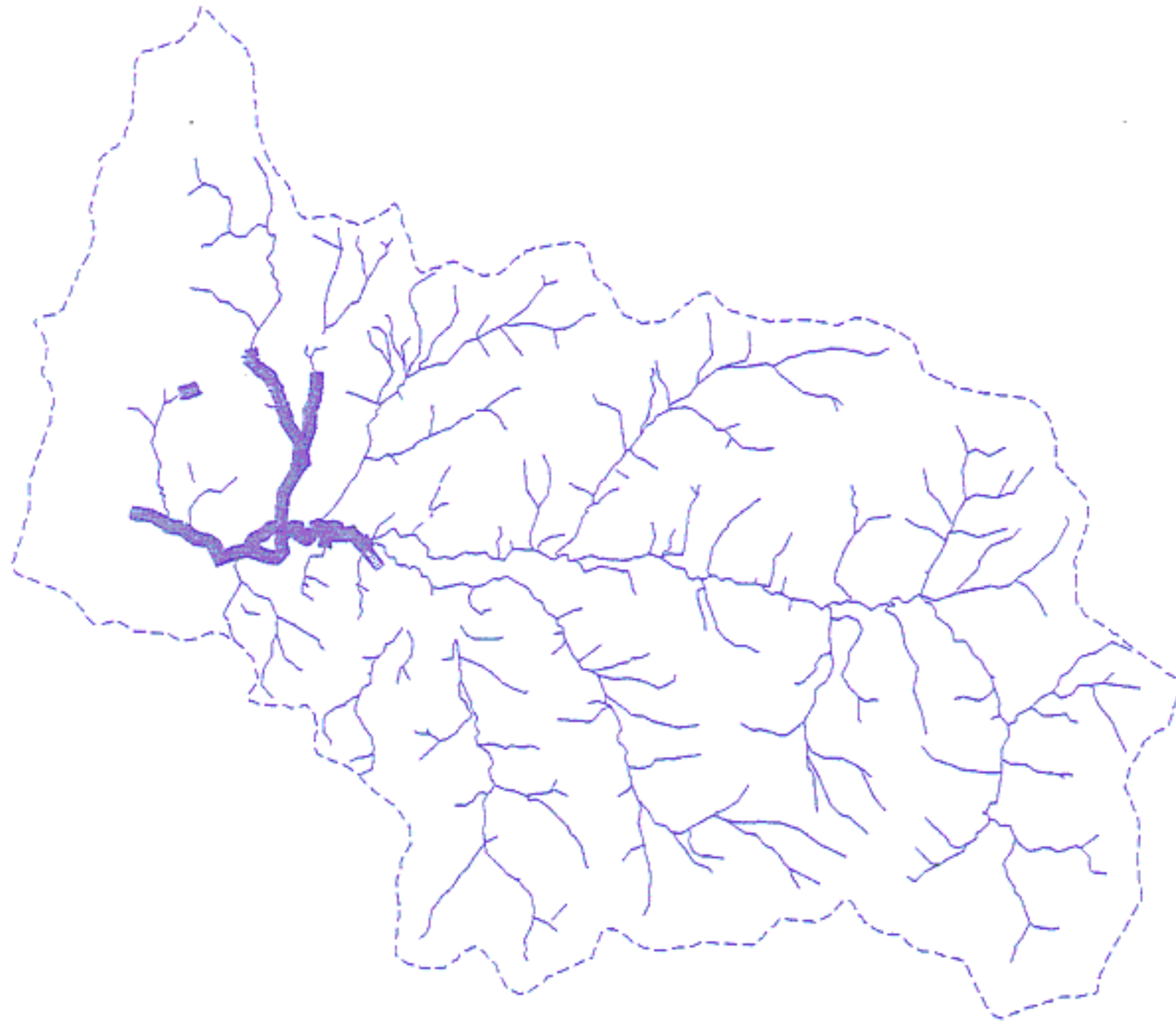


Note: No warranty is made by the Bureau of Land Management as to the accuracy, reliability, or completeness of these data for individual use or aggregate use with other data.

COHO



CHINOOK





**APPROXIMATE DISTRIBUTION OF COHO & CHINOOK SALMONIDS
ON BLM LANDS IN THE DEER CREEK WATERSHED**



October 1996

John McGlothlin

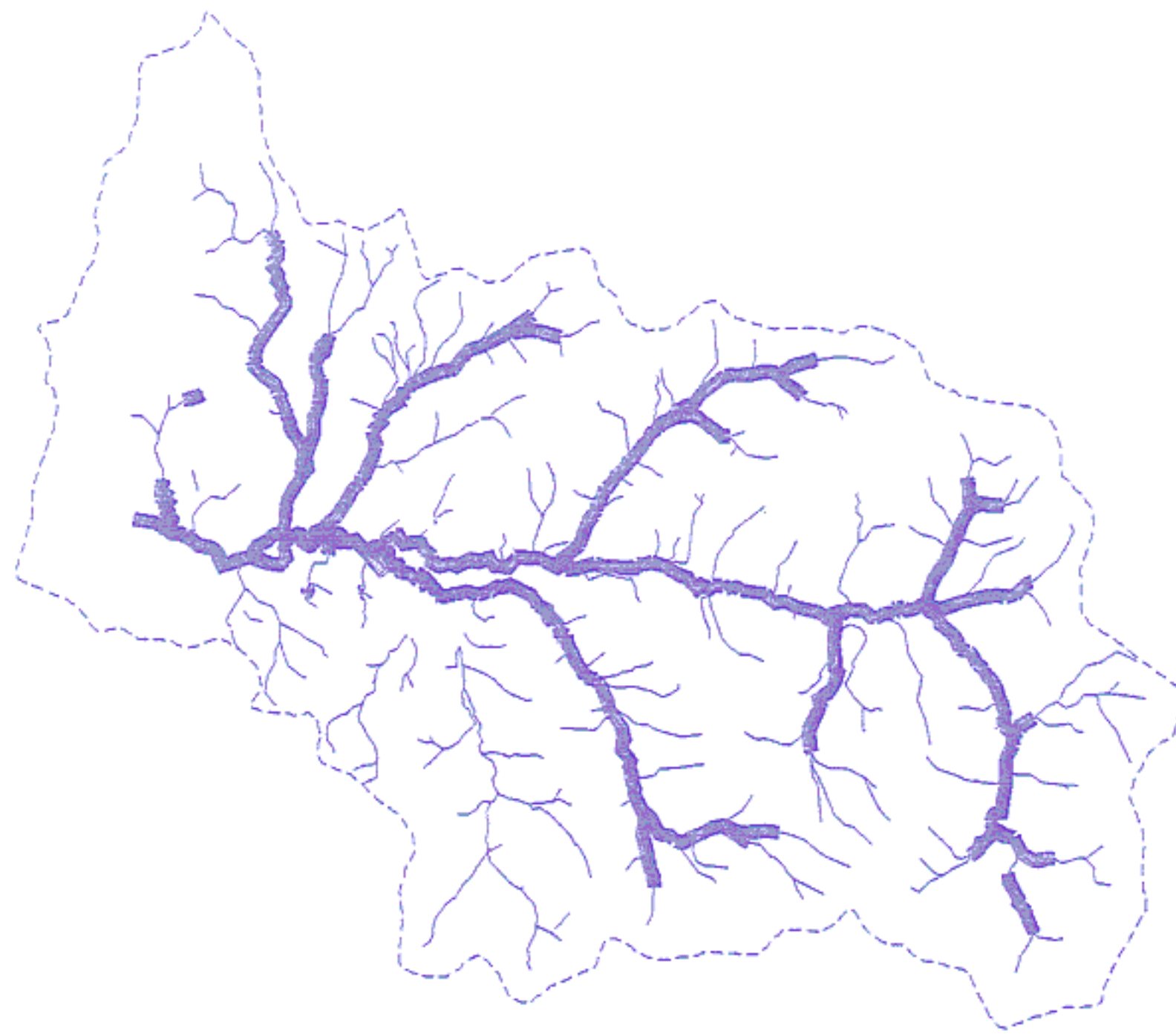
LEGEND

	WATERSHED BOUNDARY
	DISTRIBUTION OF FISH

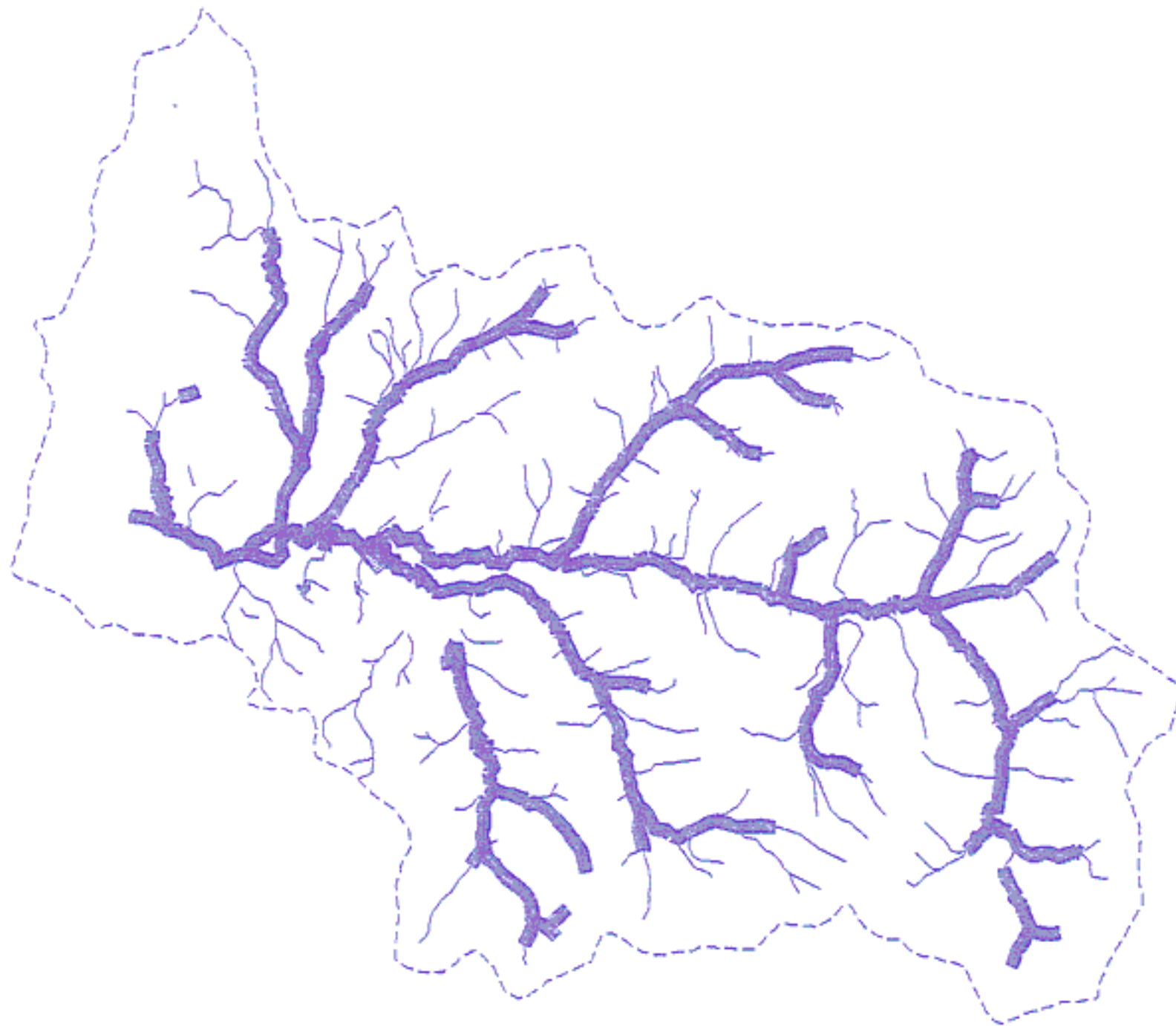
MAP 8



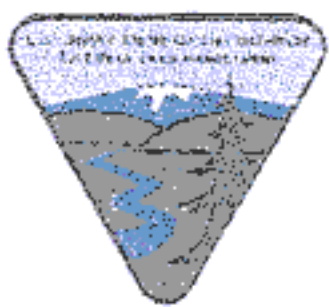
STEELHEAD



CUTTHROAT

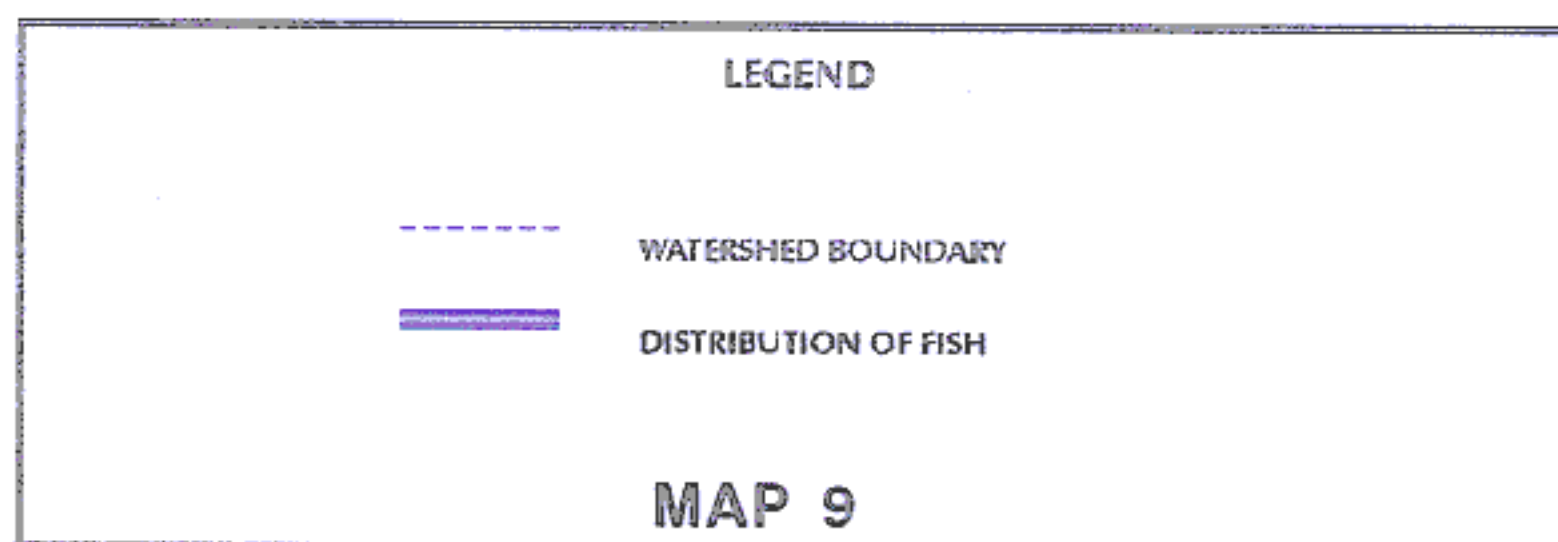


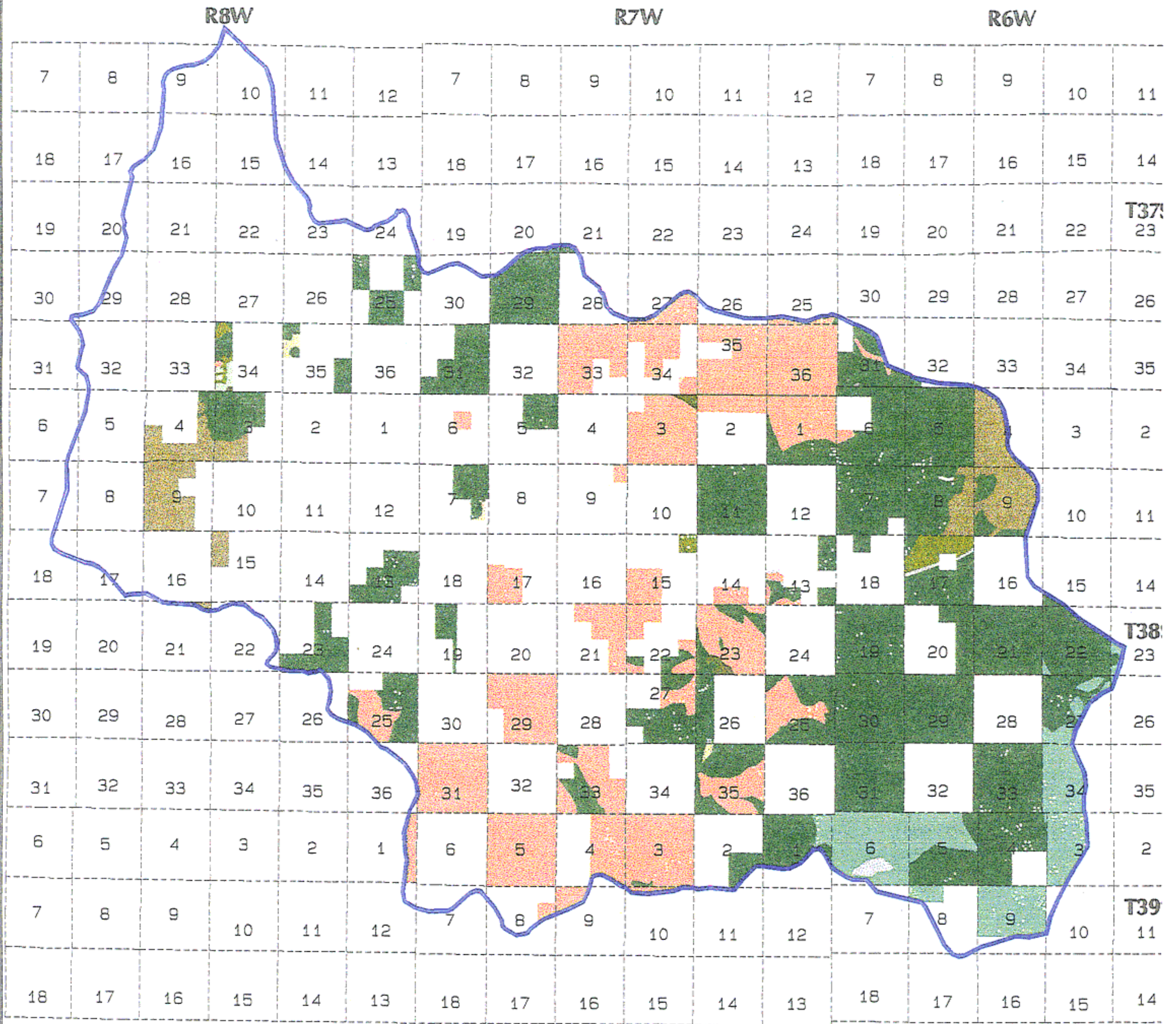
APPROXIMATE DISTRIBUTION OF CUTTHROAT & STEELHEAD SALMONIDS
ON BLM LANDS IN THE DEER CREEK WATERSHED



October 1996

John McGlothlin





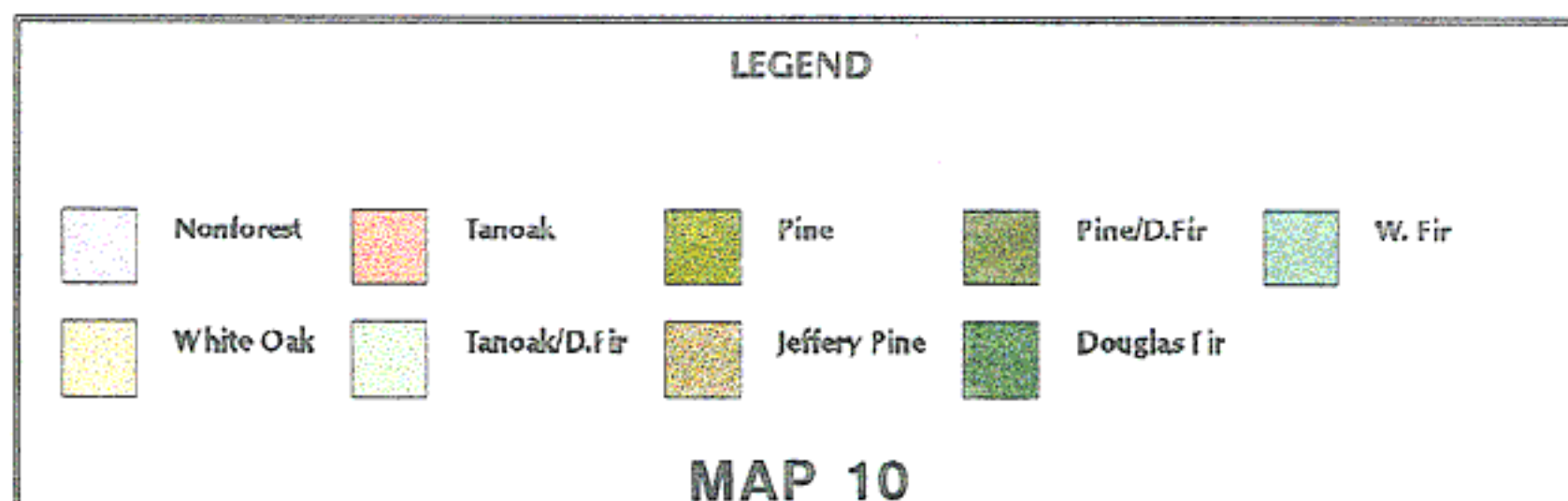
SCALE 1:140000

**PLANT SERIES ON BLM LANDS
IN THE DEER CREEK WATERSHED**



October 1996

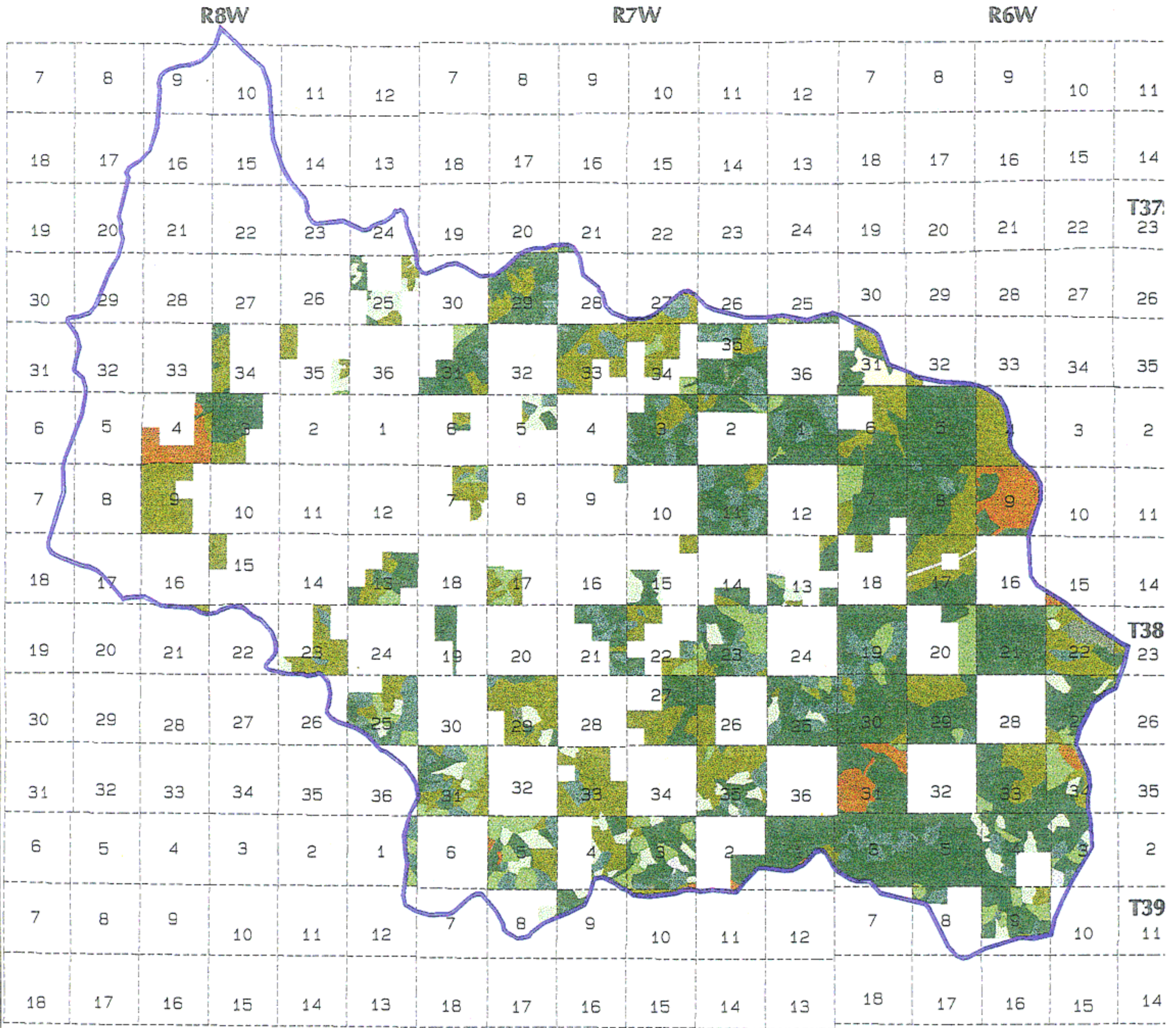
John McGlothlin



MAP 10



Note: No warranty is made by the Bureau of Land Management as to the accuracy, reliability, or completeness of these data for individual use or aggregate use with other data.



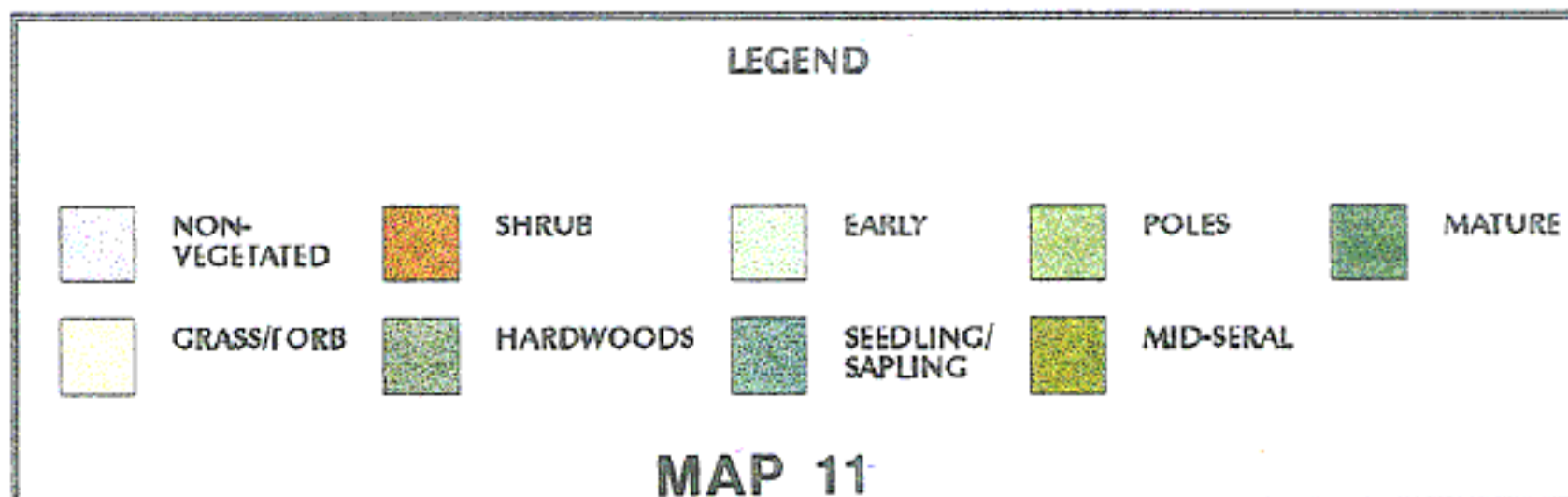
SCALE 1:140000

**EXISTING VEGETATIVE CONDITION CLASS
ON BLM LANDS IN THE DEER CREEK WATERSHED**



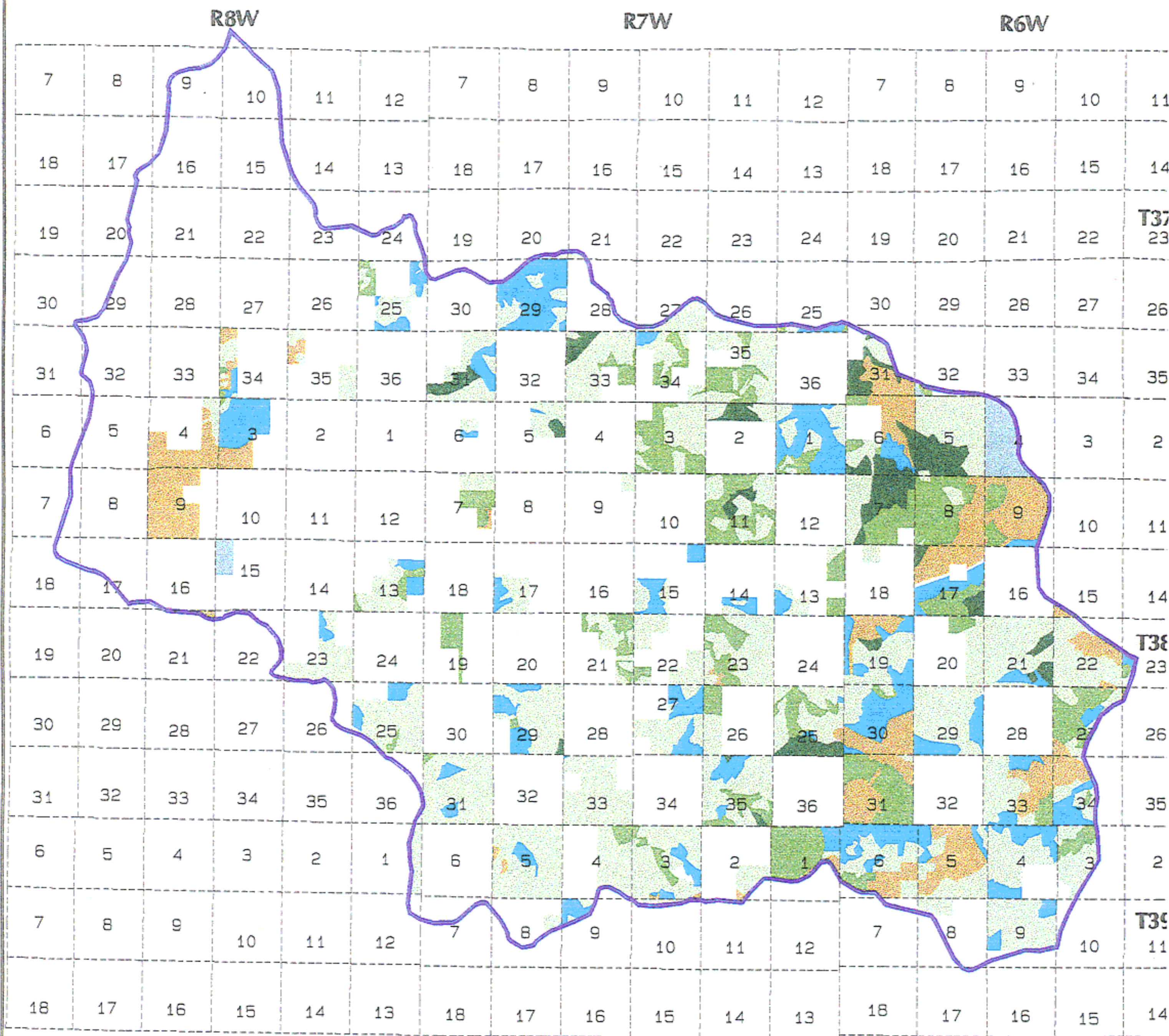
October 1996

John McGlothlin



Note: No warranty is made by the Bureau of Land Management as to the accuracy, reliability, or completeness of these data for individual use or aggregate use with other data.

MAP 11



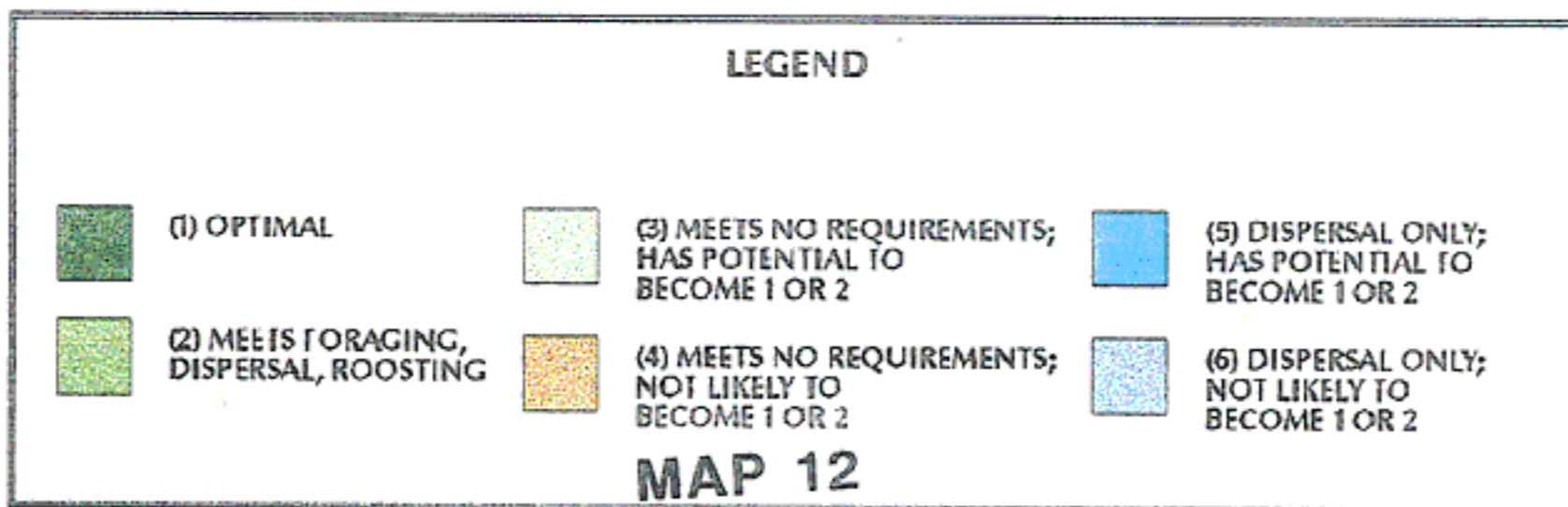
SCALE 1:140000

SPOTTED OWL HABITAT RATINGS ON BLM LANDS IN THE DEER CREEK WATERSHED



October 1996

John McGlothlin

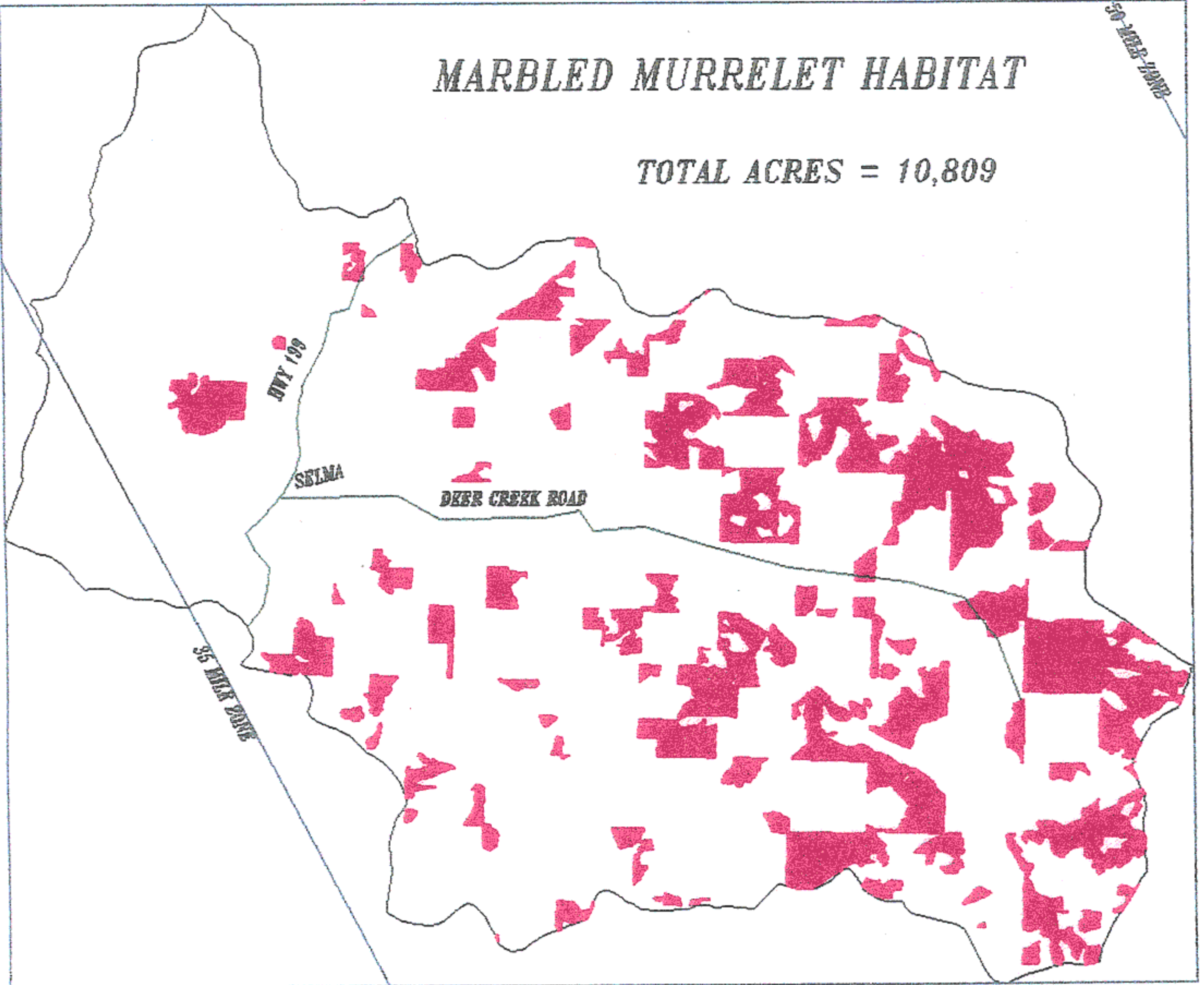


Note: No warranty is made by the Bureau of Land Management as to the accuracy, reliability, or completeness of these data for individual use or aggregate use with other data.

MARbled MURRELET HABITAT

TOTAL ACRES = 10,809

50-2183-2000



BLM ADMINISTERED DEER WINTER RANGE

TOTAL ACREAGE = 2,340

