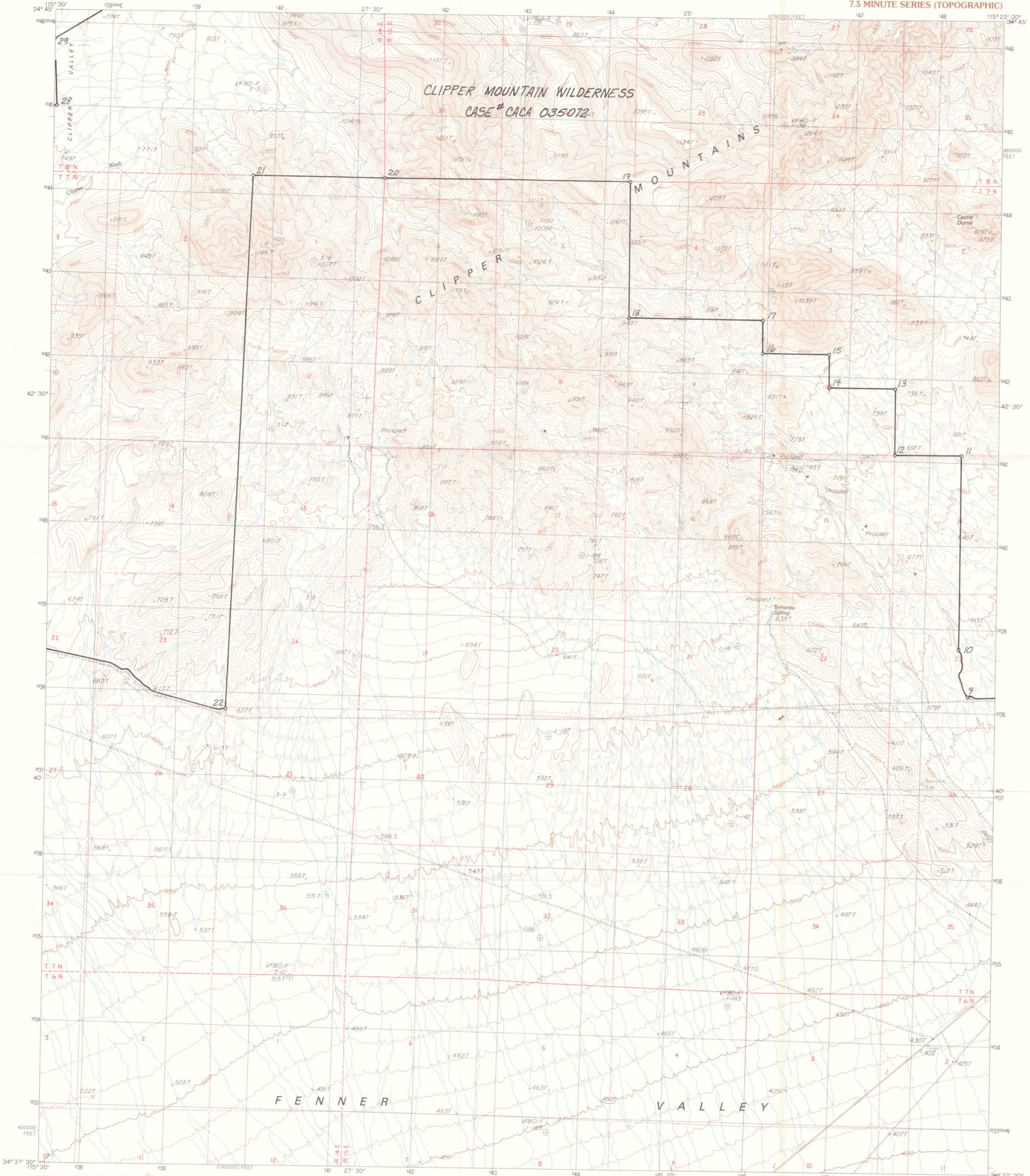
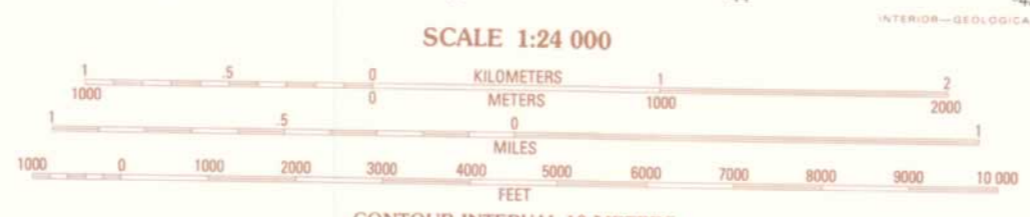


CLIPPER MOUNTAIN WILDERNESS
CASE # CACA 035072



PRODUCED BY THE UNITED STATES GEOLOGICAL SURVEY
CONTROL BY THE UNITED STATES GEOLOGICAL SURVEY
COMPILED FROM AERIAL PHOTOGRAPHS TAKEN
FIELD CHECKED 1982 MAP EDITED 1985
PROJECTION UNIVERSAL TRANSVERSE MERCATOR
GRID 1000-METER UNIVERSAL TRANSVERSE MERCATOR
10,000-FOOT STATE GRID TICS CALIFORNIA ZONE 5
UTM GRID DECLINATION 953 EAST
1980 MAGNETIC NORTH DECLINATION 1438 EAST
VERTICAL DATUM NATIONAL GEODETIC VERTICAL DATUM OF 1929
HORIZONTAL DATUM 1927 NORTH AMERICAN DATUM
To place on the predicted North American Datum of 1983,
move the projection lines as shown by dashed corner ticks
(1 meter north / 76 meters east)
There may be private inholdings within the boundaries of any
Federal and State Reservations shown on this map
Certain land lines are omitted because of insufficient data
No distinction made between houses, barns, and other buildings

PROVISIONAL MAP
Produced from original
manuscript drawings. Infor-
mation shown as of date of
photography.



CONTROL ELEVATIONS SHOWN TO THE NEAREST 0.1 METER
OTHER ELEVATIONS SHOWN TO THE NEAREST METER
To convert meters to feet multiply by 3.28084
To convert feet to meters multiply by 0.3048

THIS MAP COMPLIES WITH NATIONAL MAP ACCURACY STANDARDS
FOR SALE BY U. S. GEOLOGICAL SURVEY, DENVER, COLORADO 80225, OR RESTON, VIRGINIA 22092

ORIGINAL
FINAL

1	2	3	4	5	6	7	8
1	Van Winkle Spring						
2	West of Blind Hills						
3	Blind Hills						
4	Van Winkle Wash						
5	Danby						
6	Cady						
7	Cady Summit						
8	Skeleton Pass						

CONTOURS AND ELEVATIONS IN METERS
ROAD LEGEND

- Improved Road
- Unimproved Road
- Trail
- Interstate Route
- U.S. Route
- State Route

CASTLE DOME, CALIF.
PROVISIONAL EDITION 1985

34115-F4-TM-024