

TOWNSHIP 21 SOUTH, RANGE 42 EAST, OF THE MOUNT DIABLO MERIDIAN, CALIFORNIA.

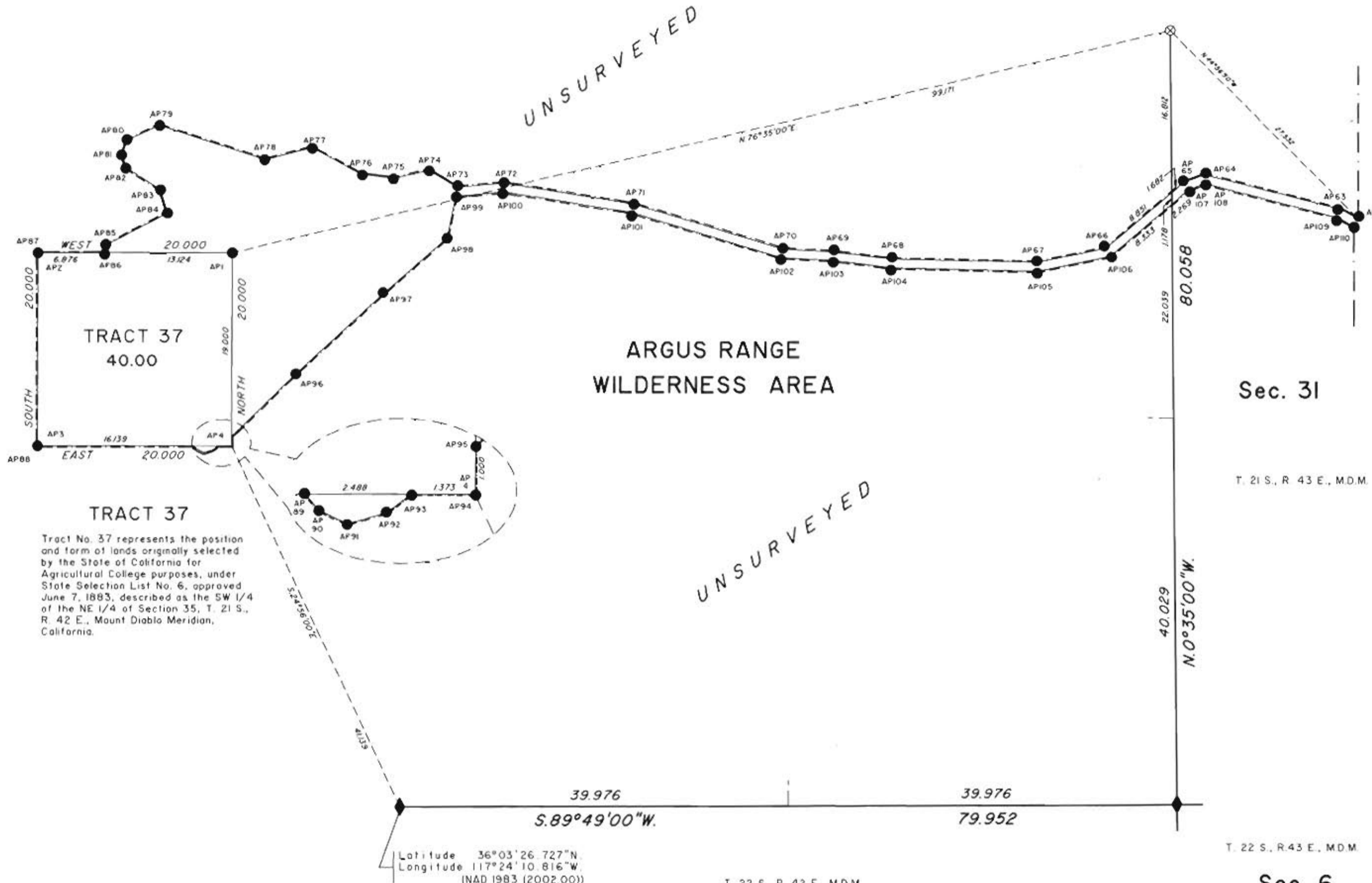
DEPENDENT RESURVEY AND METES-AND-BOUNDS SURVEY

A history of surveys is contained in the field notes.

This plat represents the dependent resurvey of portions of the south and east boundaries, the metes-and-bounds survey of Tract 37, Township 21 South, Range 42 East, and the metes-and-bounds survey of a portion of the Argus Range Wilderness Area in Township 21 South, Ranges 42 and 43 East, Mount Diablo Meridian, California.

Sections 25 through 27 and 34 through 36 of the subdivisional survey reported by Deputy Surveyor S.A. Hanson, as depicted on the official plat of survey of T. 21 S., R. 42 E. M.D.M., approved August 6, 1881, will be cancelled concurrently on the date of the approval of this resurvey (See file 9621, Ca-942.13, Group No. 1394). The lands affected, except for that shown hereon as a tract, and any valid claims or rights, have the status of unsurveyed public lands.

Survey was executed by R. Edward Patton, Jr., Cadastral Surveyor, beginning March 3, 2004, and completed March 15, 2005, pursuant to Special Instructions dated October 19, 2001, and Supplemental Special Instructions No. 1 dated February 4, 2005, under Group No. 1394, California.



TRACT 37
40.00

ARGUS RANGE
WILDERNESS AREA

Sec. 31

T. 21 S., R. 43 E., M.D.M.

TRACT 37

Tract No. 37 represents the position and form of lands originally selected by the State of California for Agricultural College purposes, under State Selection List No. 6, approved June 7, 1883, described as the SW 1/4 of the NE 1/4 of Section 35, T. 21 S., R. 42 E., Mount Diablo Meridian, California.

UNSURVEYED

T. 22 S., R. 43 E., M.D.M.

Sec. 6

Sec. 2

Sec. 1

Latitude 36°03'26.727"N
Longitude 117°24'10.816"W
(NAD 1983 (2002.00))



Metes-and-Bounds Survey of a portion of Argus Range Wilderness Area			
Beginning at:			
AP62			
AP63	N 62°08'20"W	2.015	AP86 WEST 6.876
AP64	N 75°43'30"W	14.541	AP87 SOUTH 20.000
AP65	S 70°04'00"W	2.257	AP88 EAST 16.139
AP66	S 49°55'00"W	10.533	AP89 S 40°49'00"E 0.492
AP67	S 78°25'30"W	7.277	AP90 S 64°42'10"E 0.760
AP68	N 88°36'40"W	14.935	AP91 N 72°56'40"E 0.945
AP69	N 82°51'50"W	6.069	AP92 N 53°55'30"E 0.713
AP70	N 86°52'00"W	5.085	AP93 EAST 1.373
AP71	N 73°23'20"W	16.095	AP94 NORTH 1.000
AP72	N 80°56'50"W	13.512	AP95 N 45°55'50"E 9.158
AP73	S 84°38'40"W	4.776	AP96 N 46°58'50"E 12.384
AP74	N 58°27'00"W	3.419	AP97 N 48°34'20"E 8.700
AP75	S 76°45'00"W	3.754	AP98 N 11°29'30"E 4.322
AP76	N 82°24'00"W	3.350	AP99 N 84°38'40"E 4.918
AP77	N 61°49'40"W	5.773	AP100 S 80°56'50"E 13.338
AP78	S 75°47'20"W	4.971	AP101 S 73°23'20"E 16.139
AP79	N 71°58'20"W	11.488	AP102 S 86°32'00"E 3.191
AP80	S 65°00'00"W	3.669	AP103 S 82°51'50"E 6.055
AP81	S 18°53'20"W	1.553	AP104 S 88°36'40"E 15.084
AP82	S 16°02'40"E	1.407	AP105 N 78°25'30"E 7.612
AP83	S 56°46'20"E	4.256	AP106 N 49°55'00"E 10.602
AP84	S 17°07'50"E	2.483	AP107 N 70°04'00"E 1.816
AP85	S 62°31'10"W	7.169	AP108 S 75°43'30"E 14.156
AP86	S 6°04'10"W	0.792	AP109 S 62°08'20"E 1.902
			AP110

UNITED STATES DEPARTMENT OF THE INTERIOR
BUREAU OF LAND MANAGEMENT
Sacramento, California

This plat, having been correctly prepared in accordance with the requirements of law and this Bureau, is hereby accepted.

For the Director

John J. Rilly January 12, 2006
Chief Cadastral Surveyor—California

LEGEND

- ◆ Original Evidence Recovered: Remonumented
- Position Determined and Monumented
- ⊗ GLO/BLM Monument