

Public Review 2004

Water Resources Plan for the Delaware River Basin

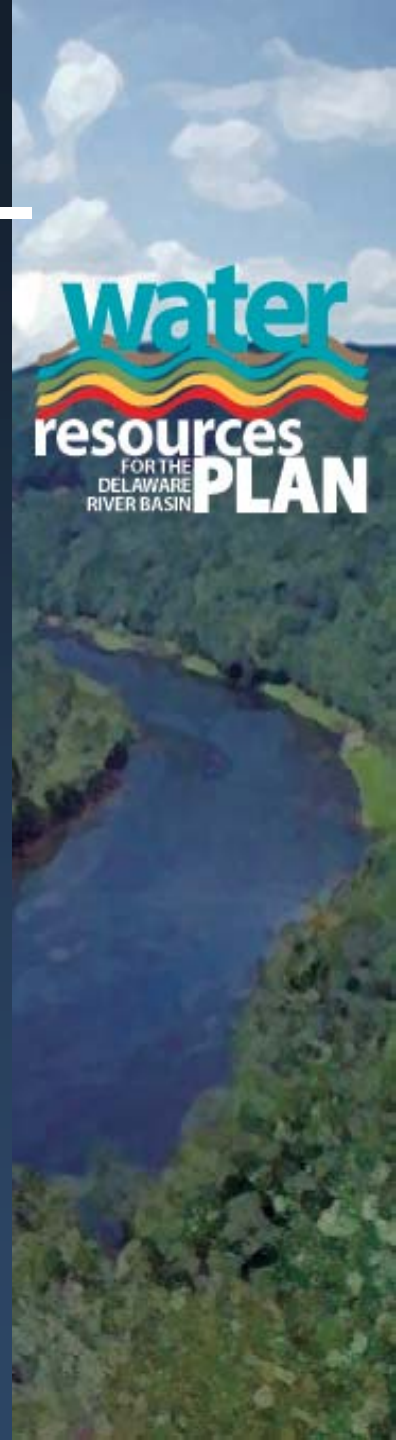
*A Common Vision for a Common
Resource*

January - March 2004



Public Review 2004

- Why a Basin Plan?
- Development Process
 - Partners
 - Highlights
- Basin Plan Public Review Draft
 - Structure
 - What is says
 - How to use it



Why a Basin Plan?

River is a shared resource -

330 free flowing river miles

We share its quality -

Improved in the last decades

We share its flows -

7.8 million residents

~14.5 M dependent on DRB water

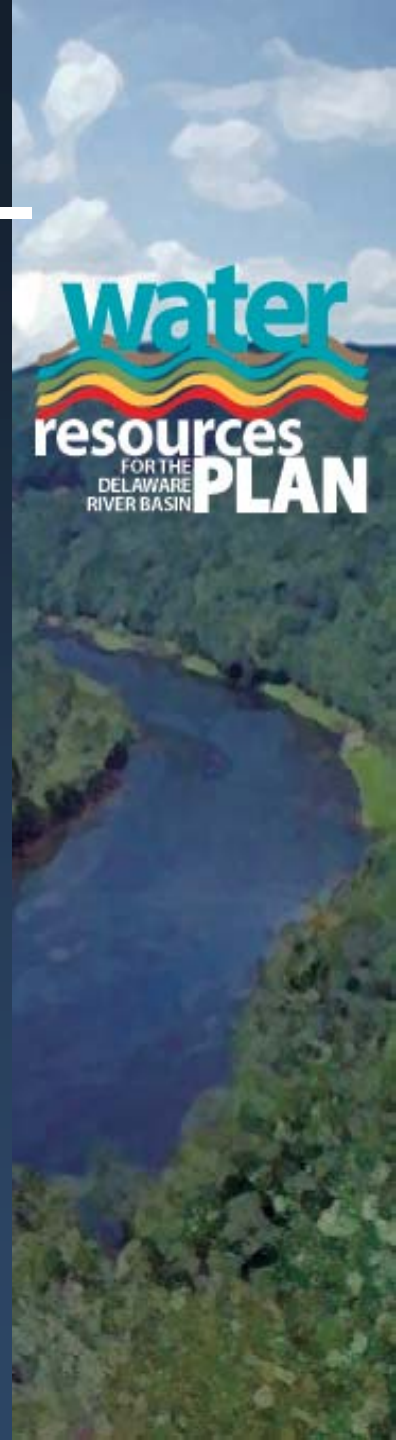


Why a Basin Plan?

- Multiple governmental agencies, authorities, departments and private entities who supply, manage or impact the quality and availability of water resources
- 1 Regional Commission for water issues:
Delaware River Basin Commission

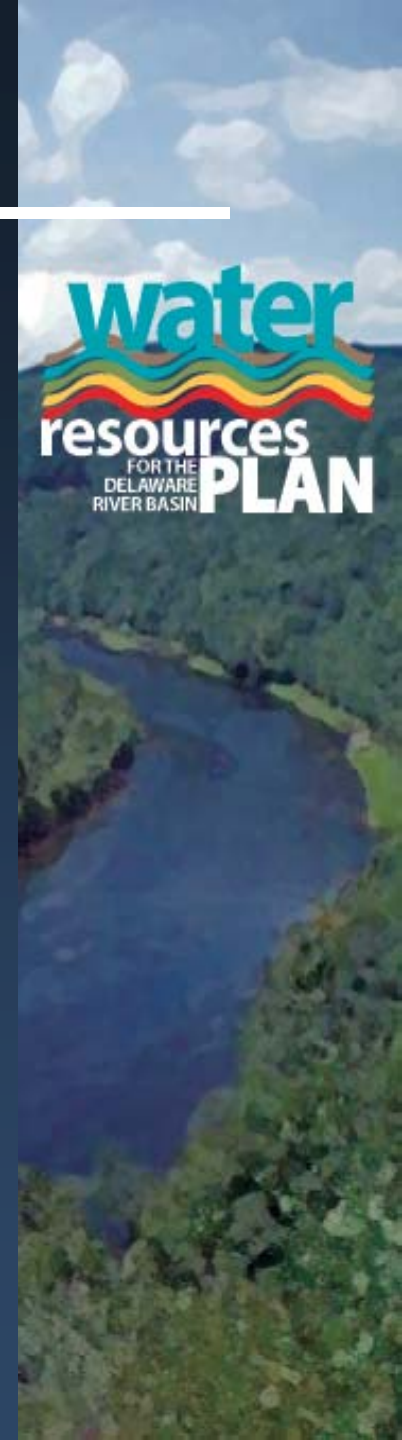
It makes sense to prepare and implement

A Common Vision for a Common Resource



Basin Plan Preparation

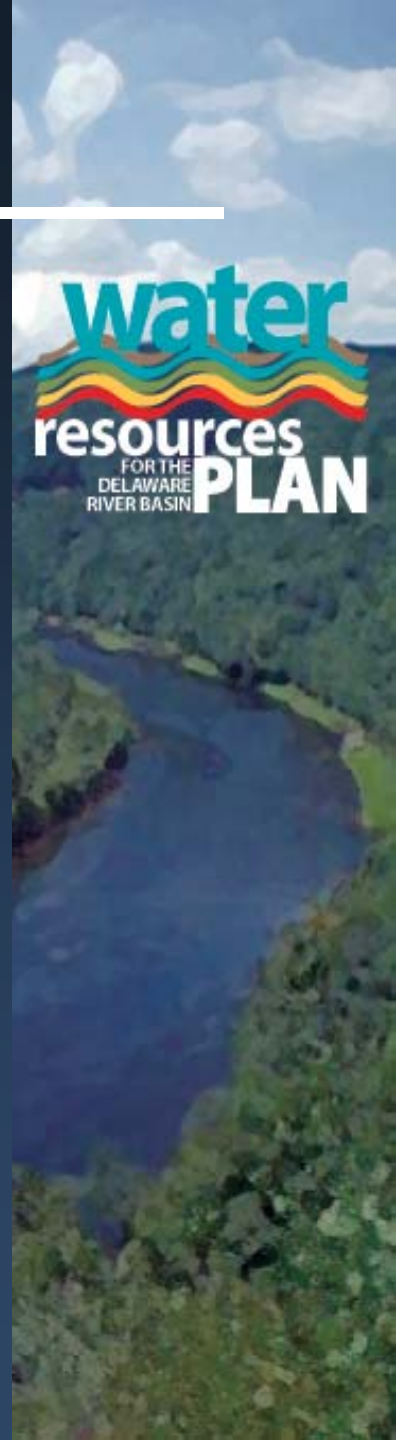
- 1998-99 *Flowing Toward the Future* process defined community issues across the Basin
- Sept 1999 Resolution of the Governors and federal partners
- Challenged the basin community to develop a unifying vision for the Basin, and
- Authorized DRBC to
 - form a Watershed Advisory Council
 - develop a water resources plan for the Basin
 - periodically develop goals and indicators report



Basin Plan Preparation

Oct '99 - Watershed Advisory Council formed (WAC)

- 36 members represent a broad spectrum of interests:
 - Government – all levels
 - Business & Industry
 - Agriculture & Development interests
 - Environmental organizations
 - Water suppliers
 - Municipal utilities
 - Academia...



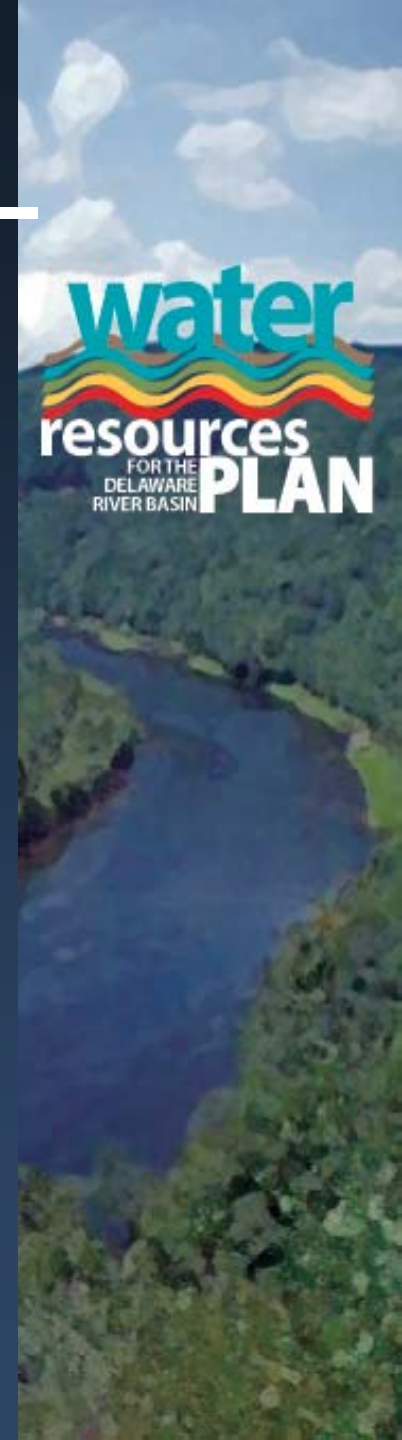
Basin Plan Preparation

- Watershed Advisory Council
- Reviewed by Advisory Committees
- Reviewed by Commissioners
- 5 official drafts 2002-3
- 9 Council meetings, 3 Council workshops, 2 Commission workshops
- Facilitated, consensus-based process
- Support for facilitation, regional cooperation & public participation provided by William Penn Foundation



Basin Plan Content

- A Unified Vision
- Establishes policy direction - 30 yrs
- Based on integrated management & collaboration
- Specifies results
- Suggests milestones and ways to measure progress

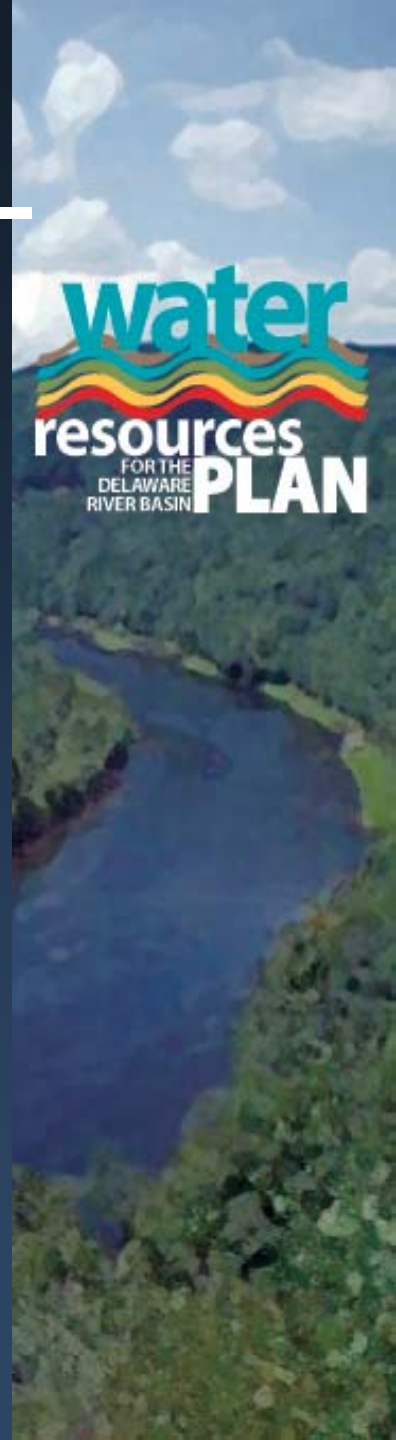


Basin Plan Content



Are these just guidelines, or are they actual new rules?

water
resources
FOR THE
DELAWARE
RIVER BASIN
PLAN



Basin Plan Content

What it's not:

Prescriptive & Regulatory

What it is:

Integrating & Collaborative

Themes:

- Sustainability
- Planning
- Integrated management
- Collaboration & partnerships
- Watershed focus

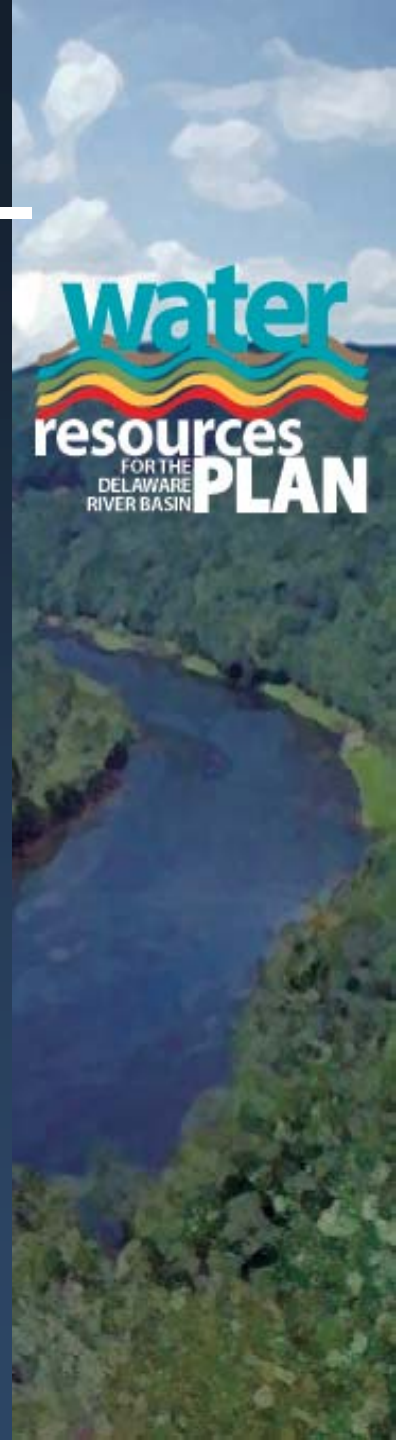


Basin Plan Structure



Guiding Principles

- Fundamental concepts to guide water resources planning & management
- Actions and policies should be assessed against these basic Plan Principles



Basin Plan Structure

Key Result Areas



Integrating Water Resource Issues

Basin Plan Structure

Key Result Area

Desired Results

Goals

Objectives

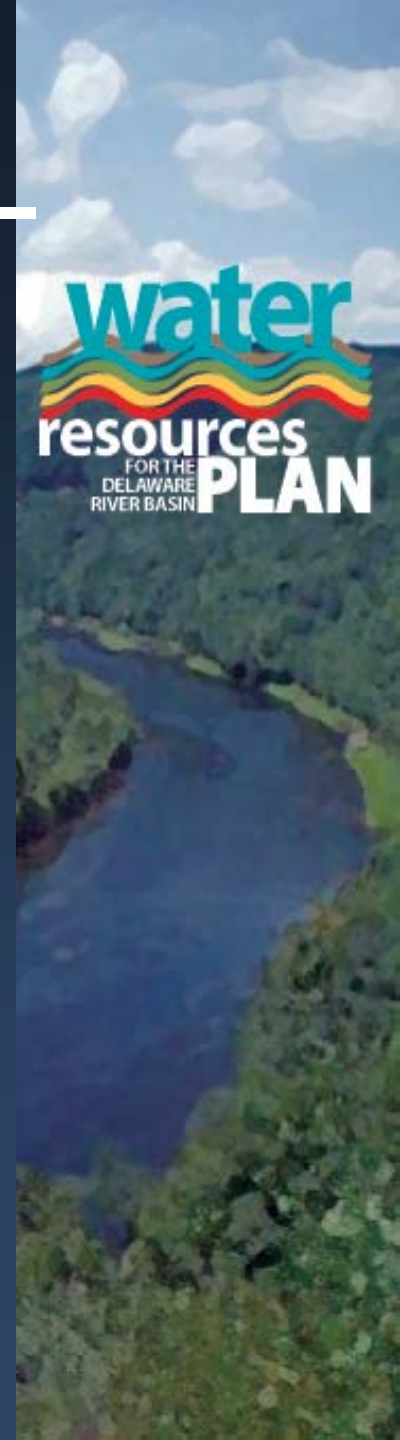


Basin Plan Structure

5 Key Result Areas - each with explanatory text & set of Goals

Matrix

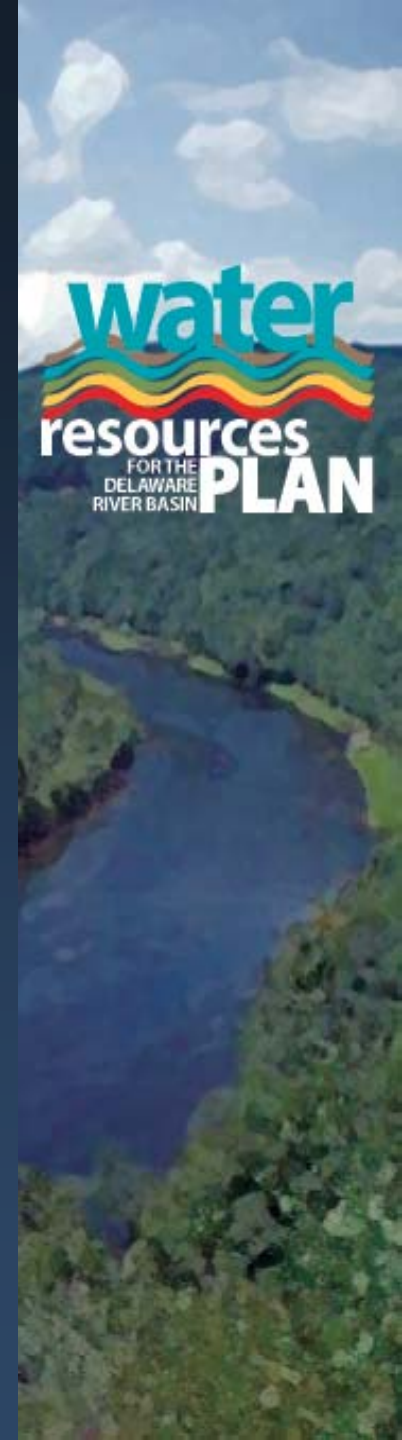
- Objectives to support each Goal, plus milestones & indicators
- also relates Objectives to other Goals of the Plan





Sustainable Use & Supply Key Result Area 1

- Balance demands on the resource
- Maintain or restore ecological integrity
- Ensure supplies - current & future demand
- Water quality:
 - Protect when good
 - Improve when not
- Integrated management...

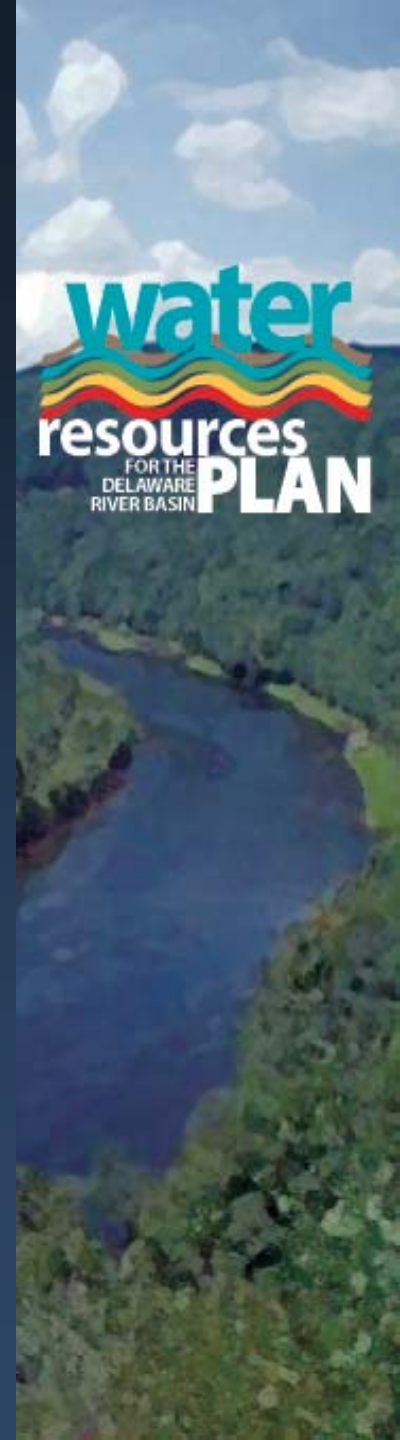




Sustainable Use & Supply Key Result Area 1

Integrated management...

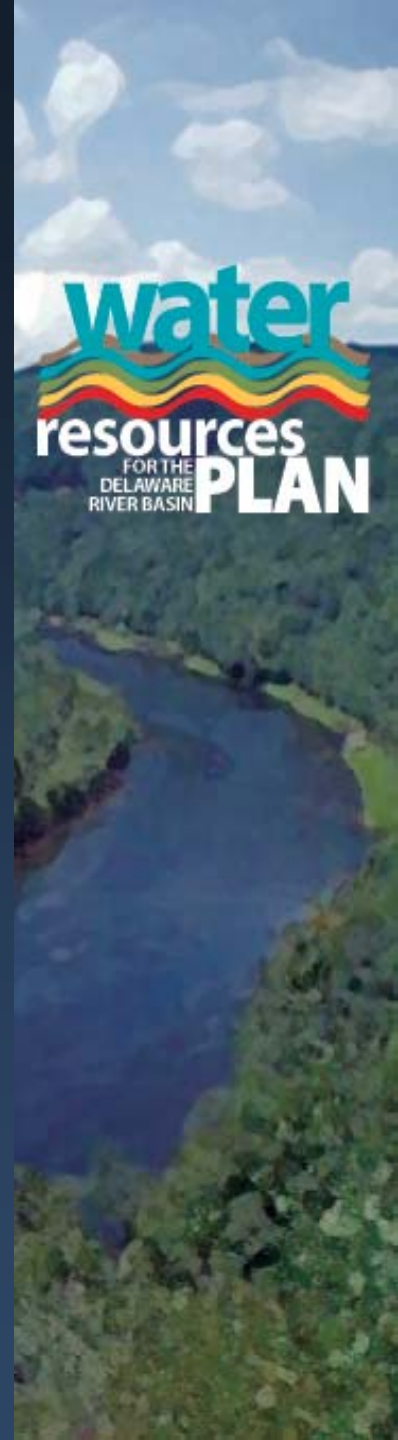
- quantity & quality
- surface & ground water
- demand & supply
- environmental, social & economic consequences
- diverse legal & regulatory frameworks





Waterway Corridors Key Result Area 2

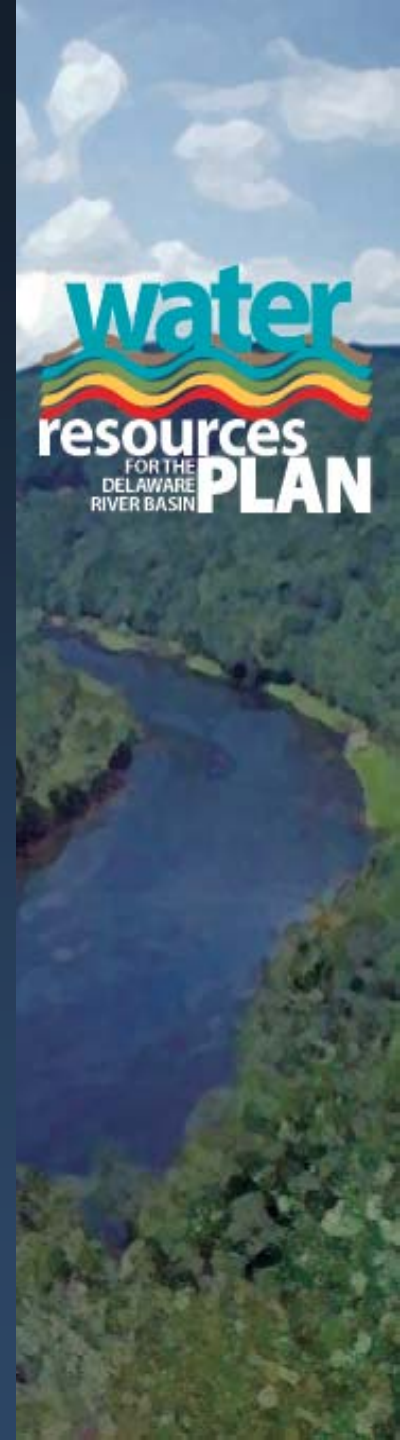
- Protect and restore healthy riparian and aquatic ecosystems.
- Prevent losses from flooding & protect floodplain ecology.





Waterway Corridors Key Result Area 2

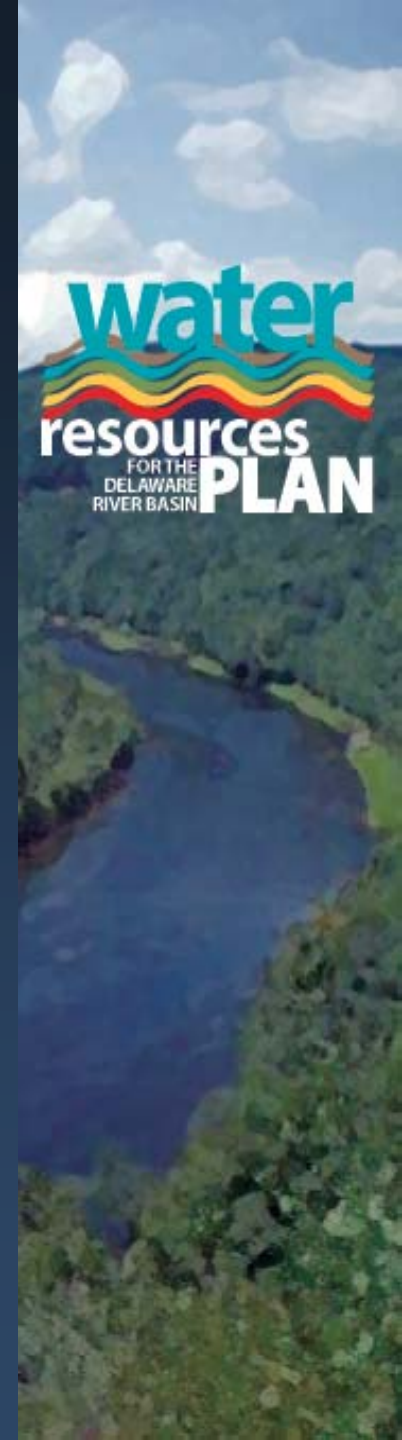
- Enhance water-based recreation
- Integrated management
 - recognize multiple values
 - consider landscape & functional linkages





Linking Land & Water Management Key Result Area 3

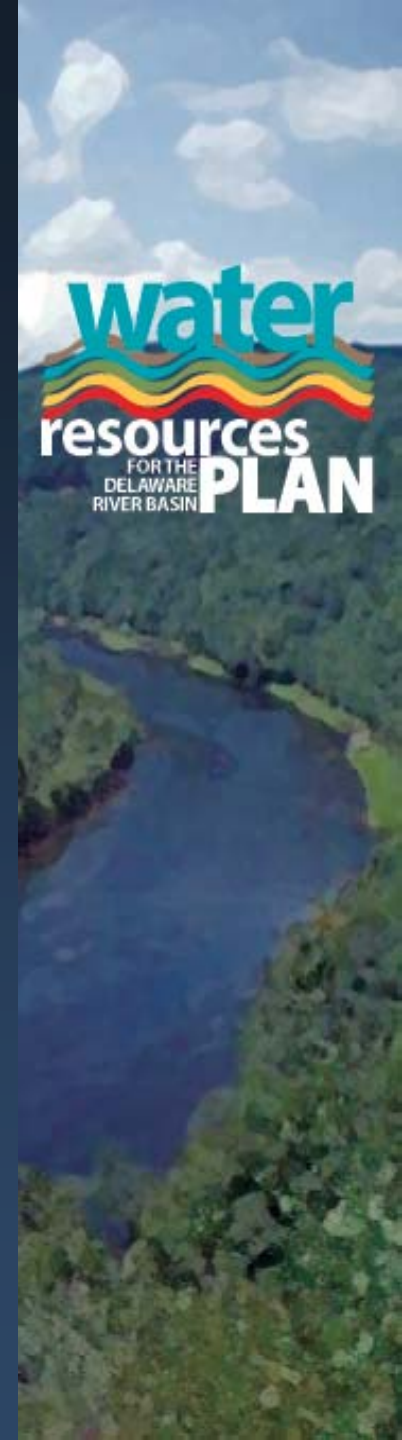
- Preserve hydrologic integrity of watersheds
 - flow regime, soil health, vegetation
 - ground/surface water interface
 - stormwater management & development practices





Linking Land & Water Management Key Result Area 3

- Maintain the function of water resource landscapes such as:
 - wetlands
 - forested headwaters
 - source waters

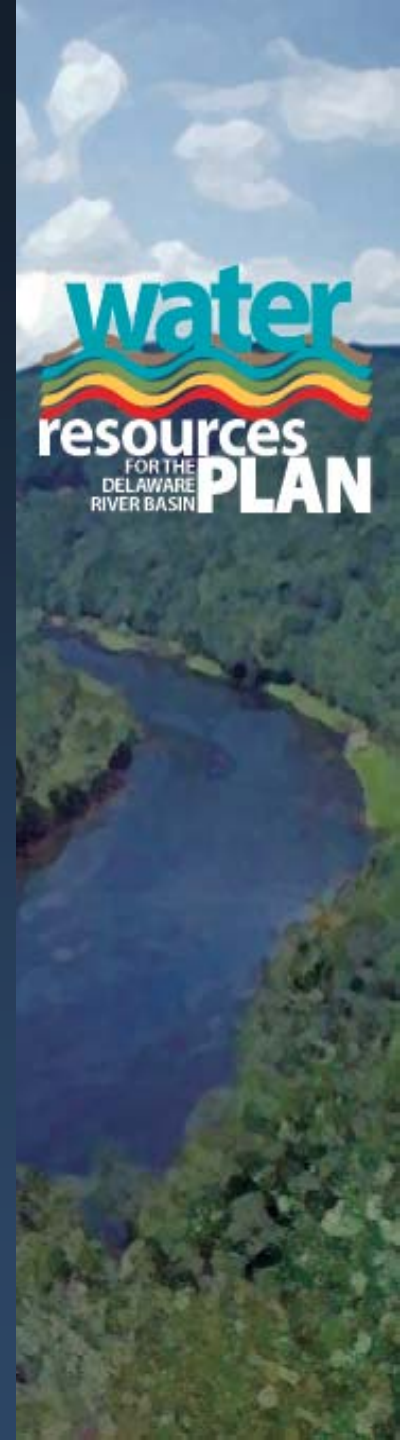




Linking Land & Water Management

Key Result Area 3

- Integrate water resource considerations into growth management & planning
 - water supply & wastewater planning
 - utility provision & growth management
 - development practices & landscape function





Linking Land & Water Management Key Result Area 3

- Encourage development & redevelopment for economic viability and resource protection
- Strengthen the social, historic, cultural, recreational & economic connections to our waterways



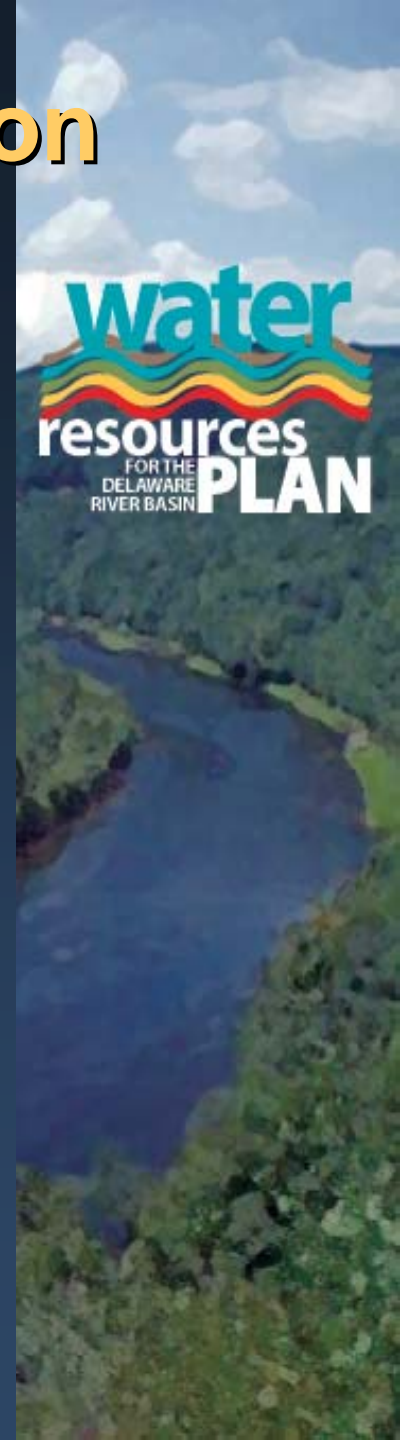
water
resources
FOR THE
DELAWARE
RIVER BASIN
PLAN





Institutional Coordination & Cooperation Key Result Area 4

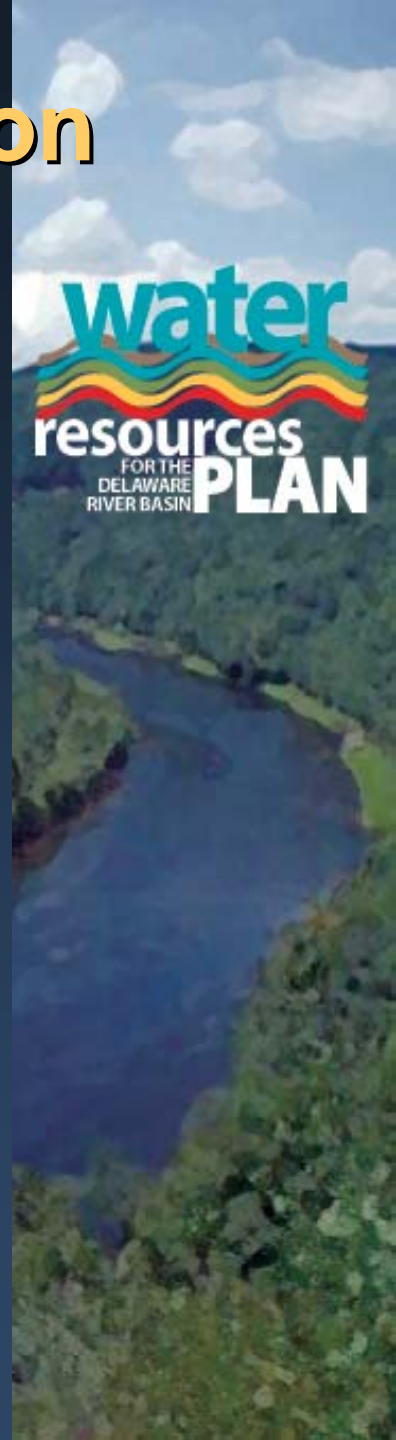
- 236 watersheds (HUC 11)
- 4 states: DE, PA, NJ, NY
- 42 counties
- 838 municipalities
- 25 congressional districts
- 2 EPA regions & 5 USGS offices
- multiple agencies, authorities, organizations
- 1 regional Commission for water issues





Institutional Coordination & Cooperation Key Result Area 4

- Improve coordination
 - Be inclusive: ID Key Players, relevant policies, laws & regulations
 - Create vehicles for collaboration
 - Increase sharing of information, data & ideas
- Secure resources - leverage





Institutional Coordination & Cooperation Key Result Area 4

Stormwater management

EPA - federal
DEPs, SCDs,
DCAs

Basin Plan

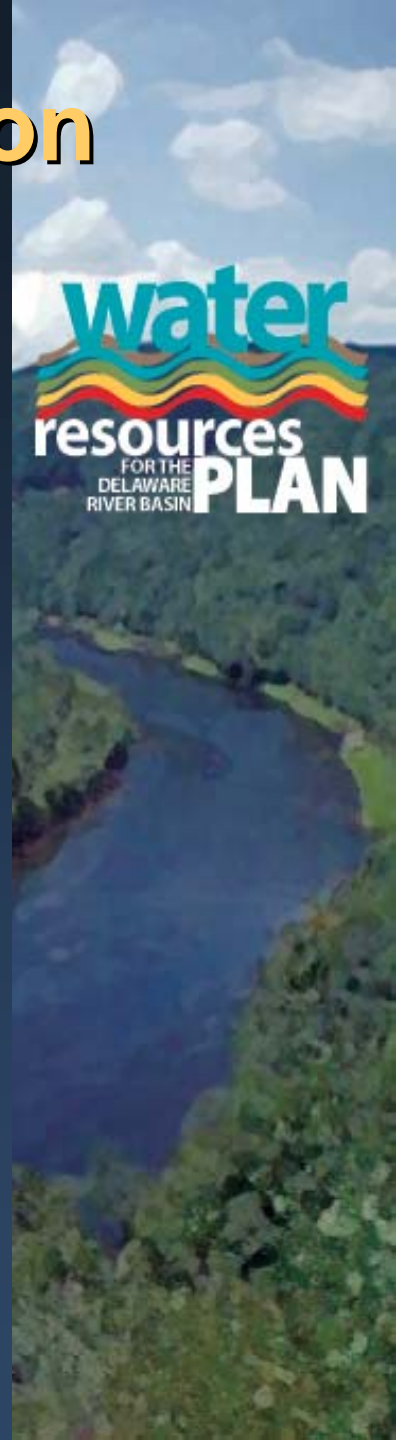
Flood mitigation

Corps - federal
EMAs, DEPs,
NRCS,
DCAs, Counties

Flood warning & response

NWS & FEMA – federal
State EMAs

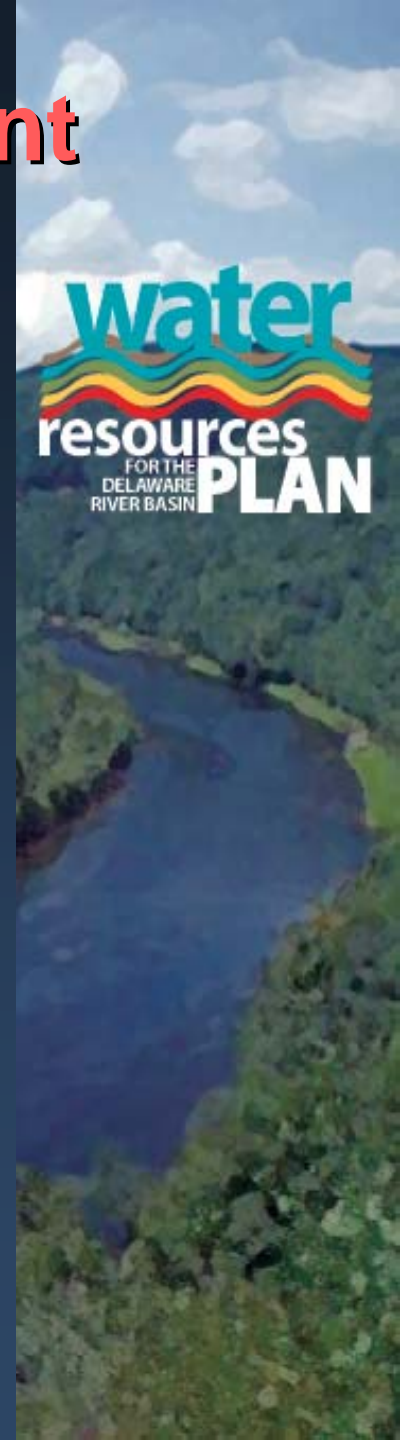
Reduce Program Fragmentation





Education & Involvement for Stewardship Key Result Area 5

- Establish a sense of place:
 - know your watershed address
 - know your Basin address
- Increase awareness of water resource issues for all
 - students, residents, users, businesses, decision makers
- Increase opportunities for technology transfer and information sharing among water resource professionals





Education & Involvement for Stewardship Key Result Area 5

- Create opportunities for involvement



Schooner AJ
Meerwald --
Bayshore
Discovery
Project's
sailing
classroom



Basin Map

Large watersheds, or groups sharing common landscapes

Regions related to mainstem characteristics

Relates watersheds to one another in the Basin system



Basin Map

- for data collection
- for characterization
- for prioritization
- for collaboration

The river that divides,
also unites us.

Sub-basins of the Delaware River

UPPER REGION

- East-West Branch
- Neversink-Mongaup
- Lackawaxen

CENTRAL REGION

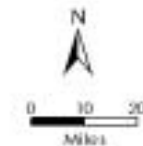
- Upper Central
- Lower Central
- Lehigh Valley

LOWER REGION

- Upper Estuary
- Lower Estuary
- Schuylkill Valley

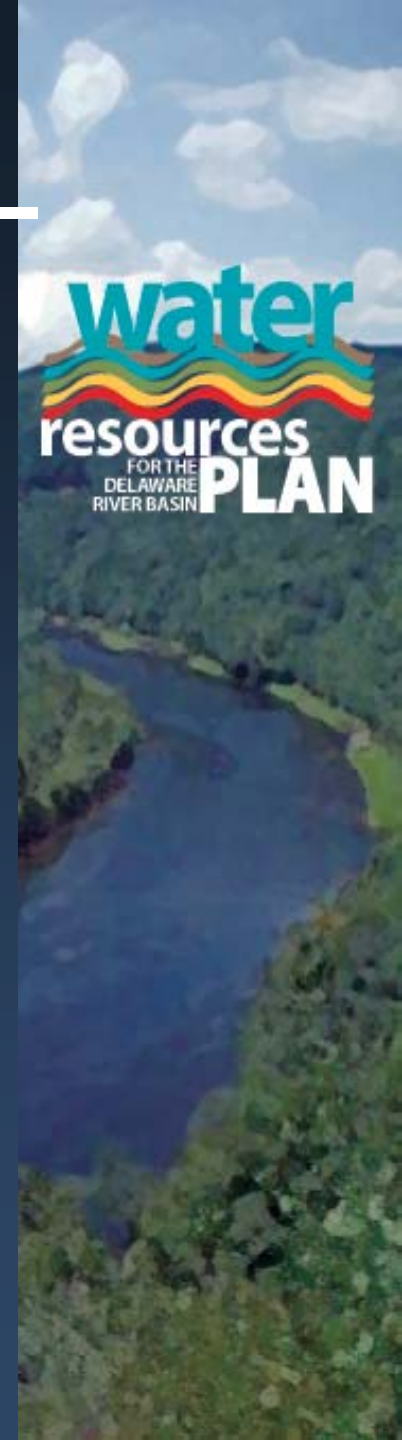
BAY REGION

- Delaware Bay



Who is the Plan for?

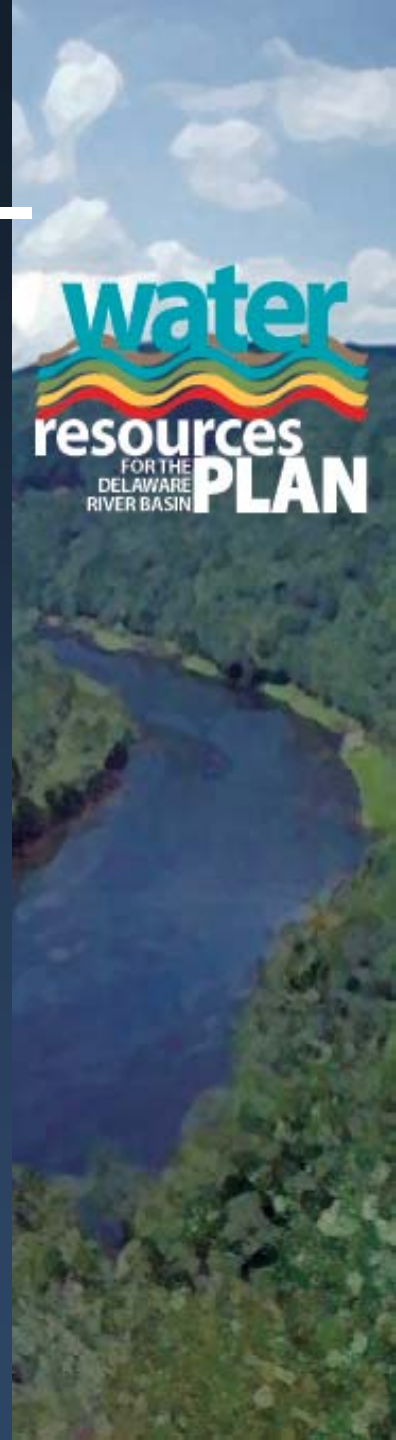
- Federal, state, regional, local agencies, authorities & commissions responsible for
 - water resource management
 - stormwater management
 - environmental resource protection
 - land use planning & growth management
 - development & construction standards(for example)



Who is the Plan for?

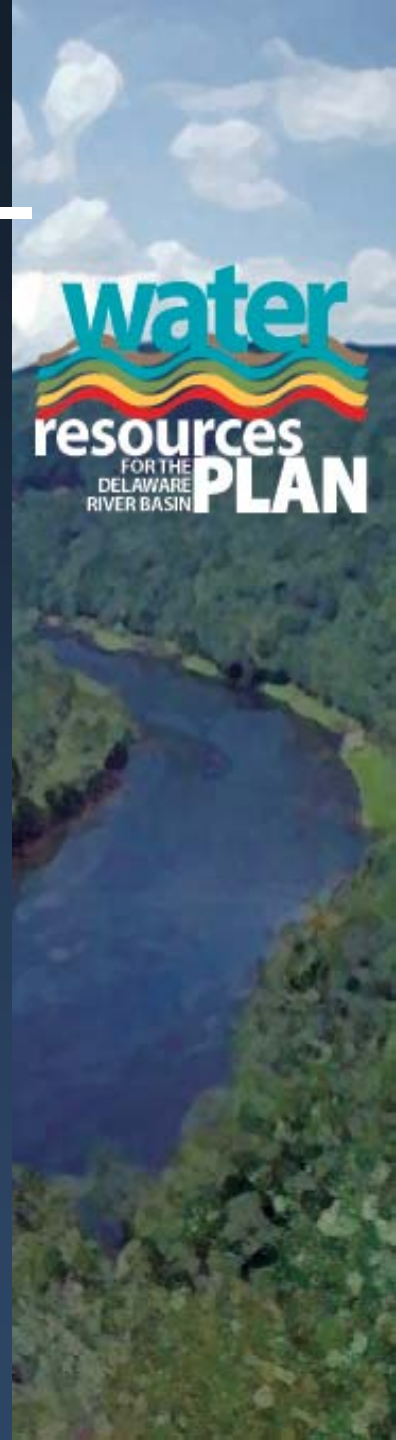
- Non-governmental organizations whose actions complement those of the governmental sector including
 - watershed associations
 - civic associations & citizen action groups
 - academic institutions
 - professional associations & members
 - users & providers of water

(for example)



How to use the Basin Plan

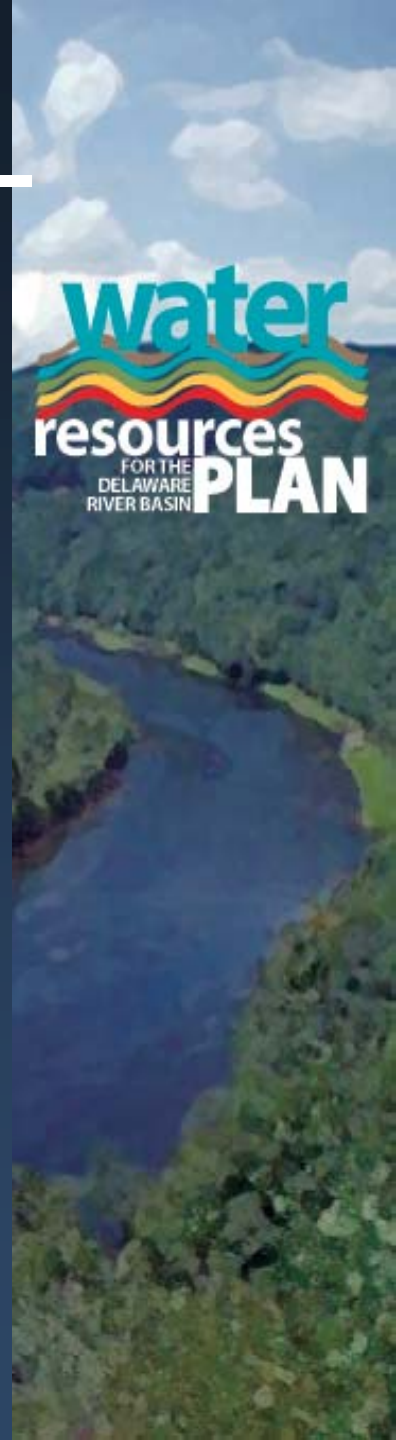
- Guide policy setting and decision making
 - develop policy in accordance with Plan Goals & Desired Results
 - align local goals in accordance with local issues and those of the Basin



How to use the Basin Plan

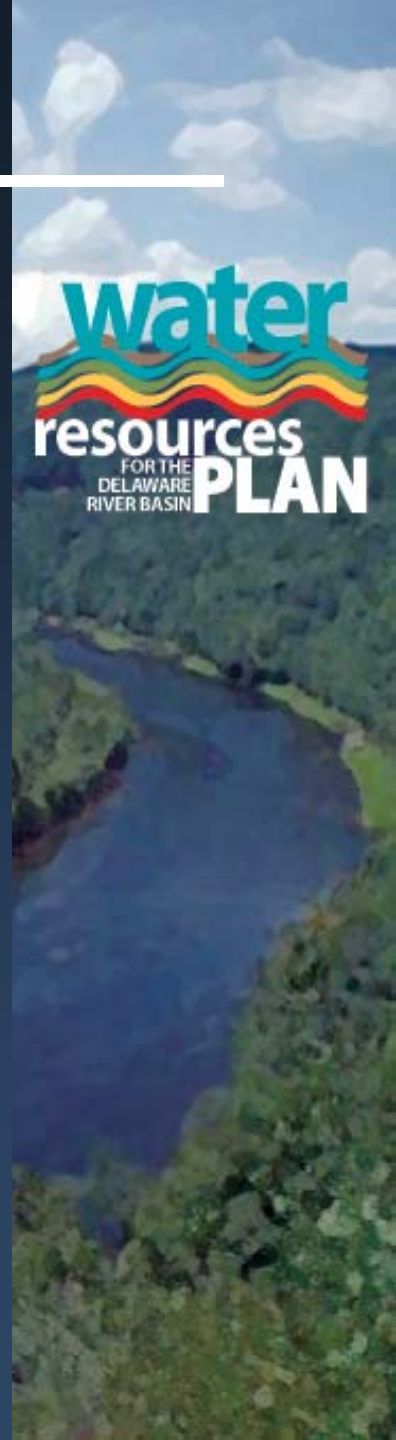
As a framework for relating plans and coordinating actions

- measure progress with shared/ common indicators
- relate requests for funding to a larger context and Plan
- use as impetus for improved collaboration
- guidance for new research



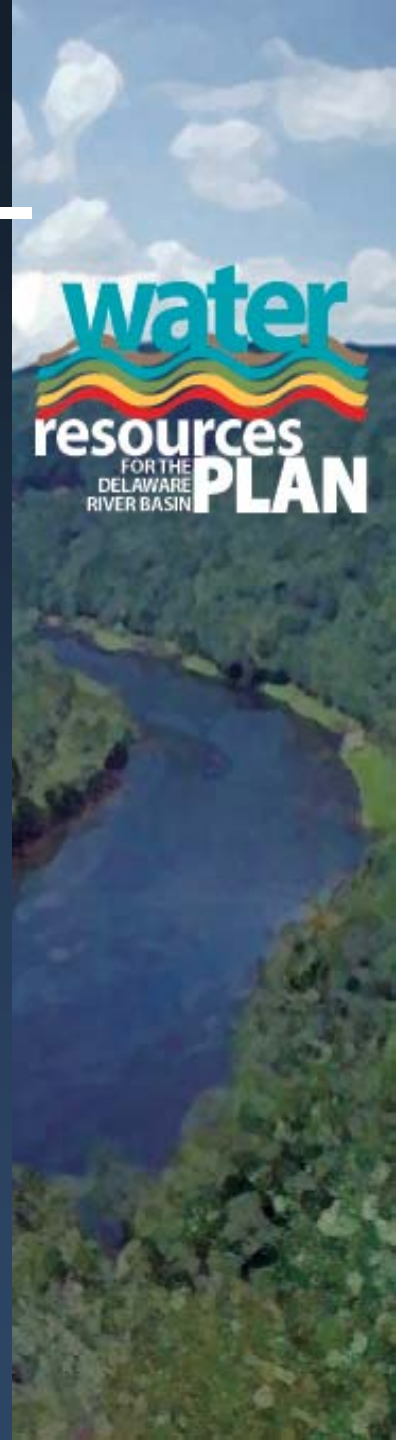
Relationship with other plans

- Basin Plan supplies framework
- Does not over-ride existing adopted plans
- Establishes goals to be used during re-evaluations of plans
- Sets milestones for progress



What's next...

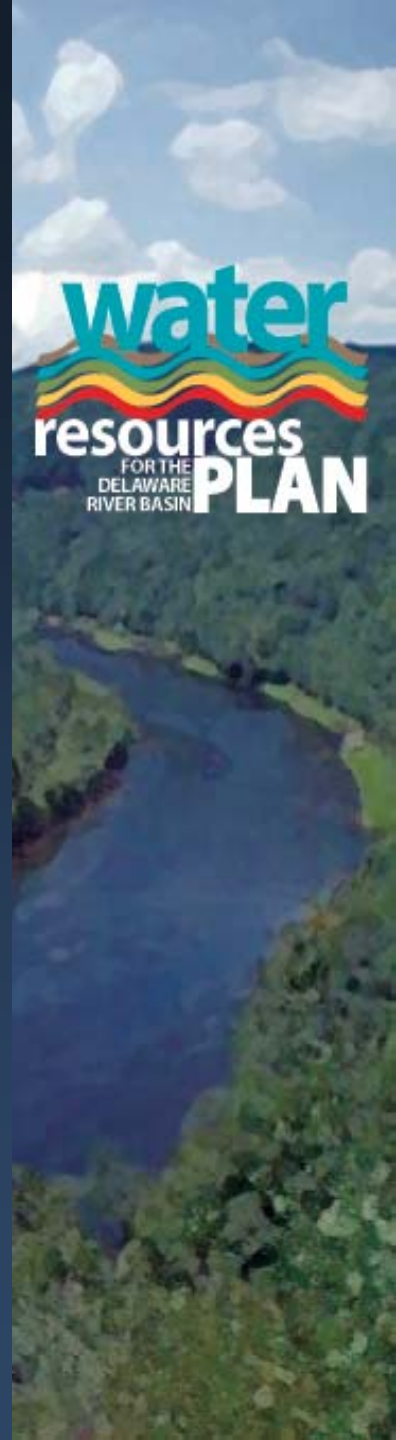
- Baseline assessments and characterization
- Setting strategies – action plans for implementation
- Agreement on indicators to measure progress
- Reports on progress
- Review of DRBC Comp Plan, state & federal programs to support Basin Plan Goals



Water resource activities in the Basin

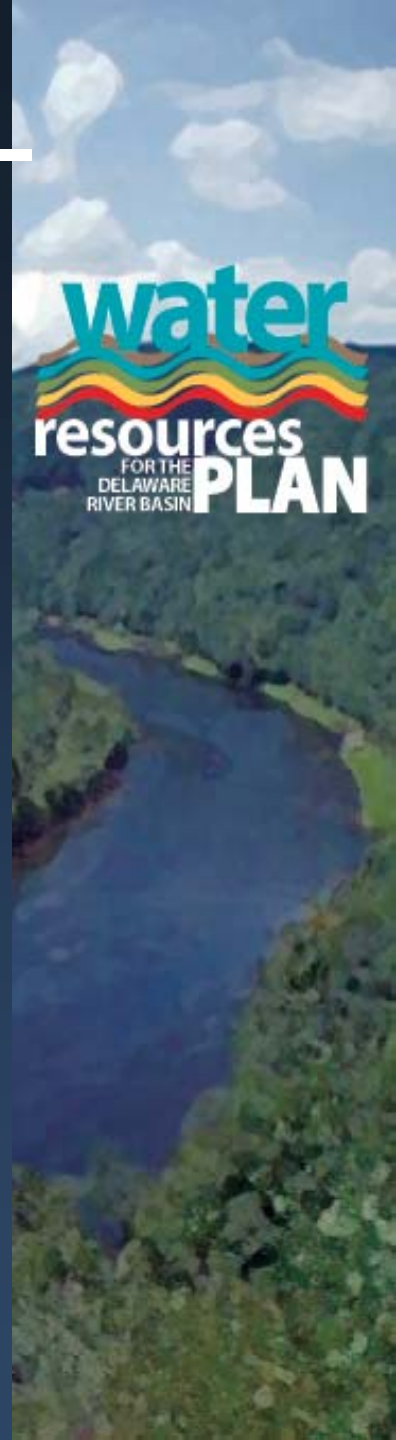
- SWAP – protecting source waters
- water supply planning
- watershed planning
- stormwater management
- TMDLs
- antidegradation: Special Protection Waters & state initiatives to

Keep the Clean Water Clean



Water resource activities in the Basin

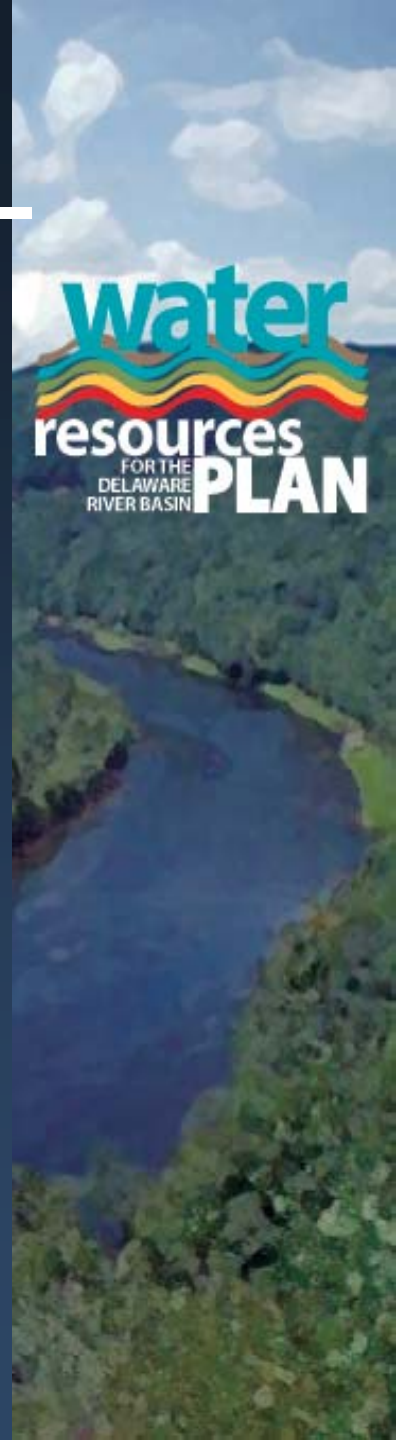
- groundwater availability assessments
- water budgets
- demand forecasting
- instream flow needs
- biocriteria
- information availability: iMap



Issues

The following slides highlight issues identified during:

- Public participation in the *Flowing to the Future* visioning process of 1999
- DRBC study of flow management concerns in the Basin



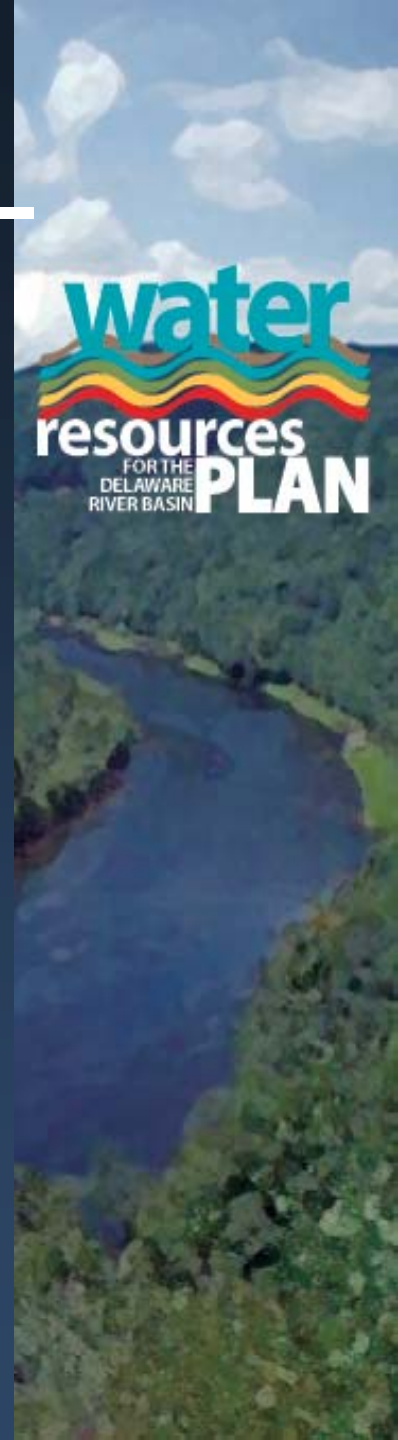
Issues ~ Upper Region

- Funding for strategic watershed planning
- Stream buffers
- Basin transfers & efficiency
- Support for local planning
- Flow management
- Fisheries & Recreation
- Special Protection Waters program



Issues ~ Central Region

- Comprehensive watershed management
- Environmental education
- Regional water supply & land use planning
- Fish habitat & water quality
- Recreation & flow management
- Power generation
- Partnerships



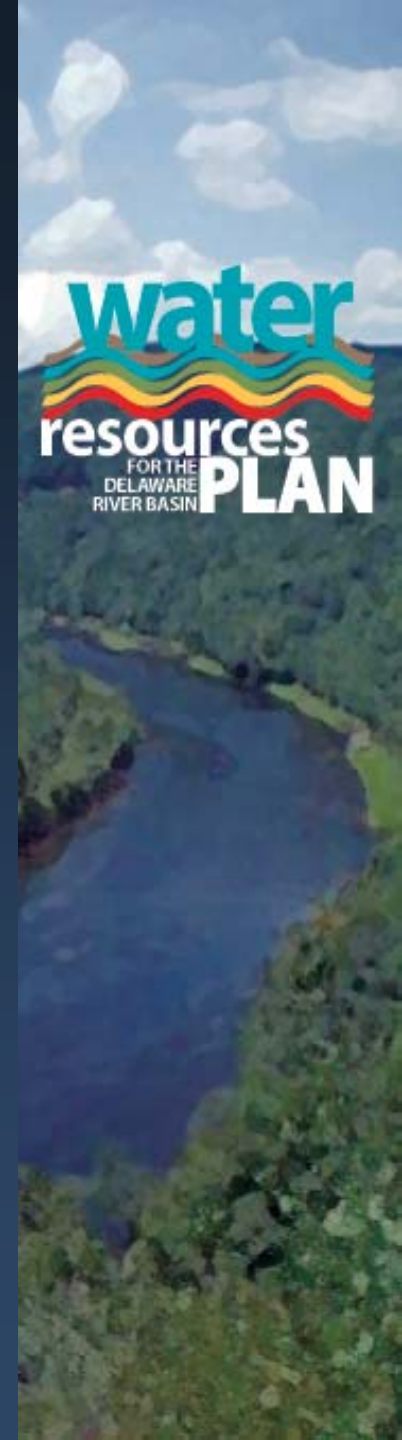
Issues ~ Lower Region

- Adequate supply, suitable quality
- TMDLs & water quality standards
- Salinity impacts: industry, drinking water & the estuary
- Watershed planning
- Tourism & recreation
- Navigation
- Partnerships, coordination & stewardship



Issues ~ Bay Region

- Non-point source issues
- Water supply enhancement options
- Science-based regulations
- Watershed-based planning & management
- Collaboration
- Salinity impacts
- Wetlands & oyster habitat



Thank you!

- Sponsors
- Hosts ~ Watershed Advisory Council members
- All who participated
- DRBC Commissioners
- William Penn Foundation



Thank you!

Basin Plan document available in color at:

- Home Page: www.drbc.net/

Click on *New Basin Plan Development*

or

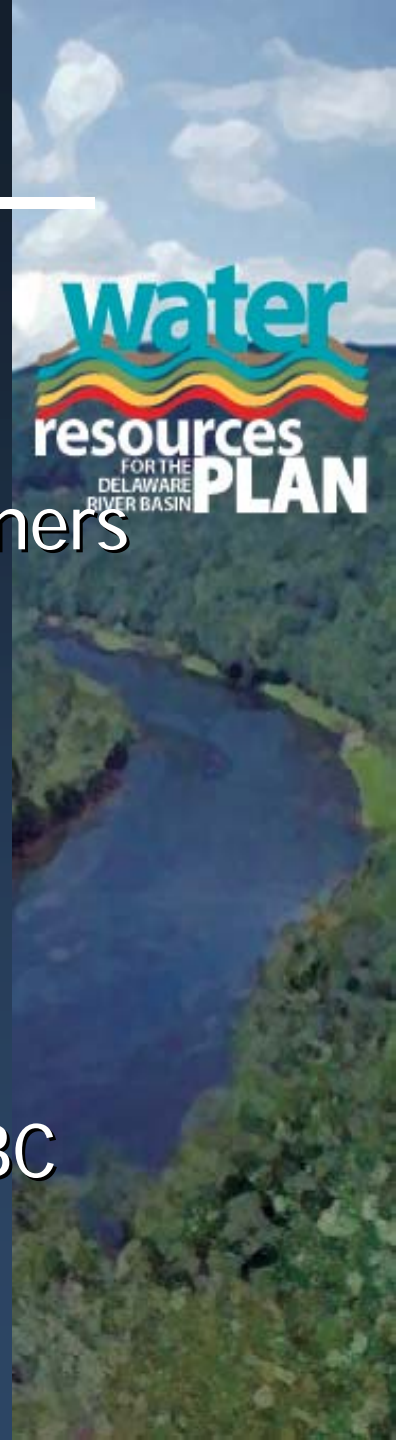
<http://www.state.nj.us/drbc/BPJan04/index.htm>



DRBC Programs

I. Planning

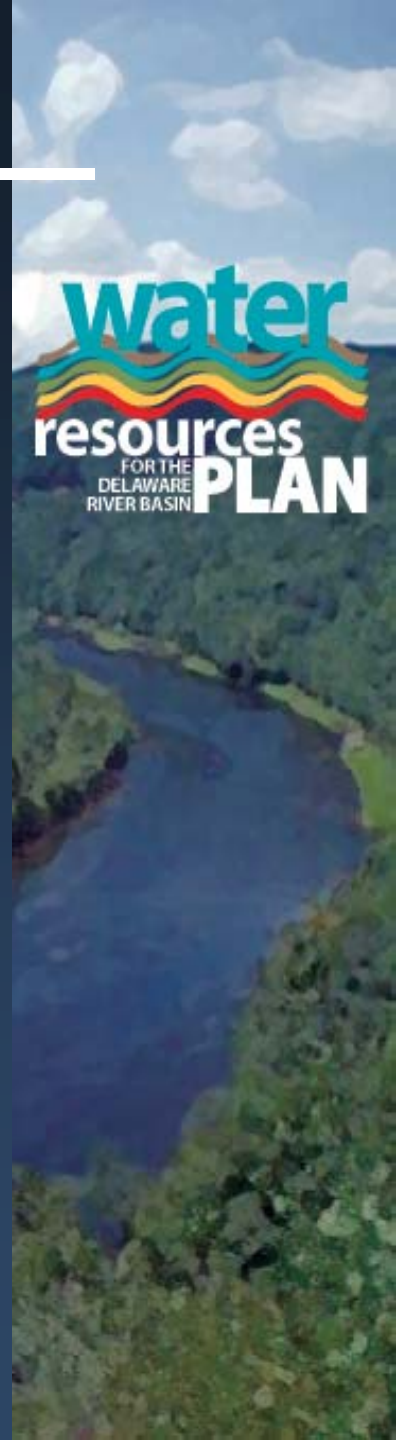
- Basin Plan – guide all issue areas, all partners
(30-Year Plan)
- Comprehensive Plan – DRBC Compact
(Update as needed)
- Water Resources Program - DRBC
(6-Year)
- Annual Work Plan/Budget - DRBC
(1Yr)



DRBC Programs

II. Water Resources Management

- Water Supply (KRA 1)
- Pollution Control (KRA 1)
- Flood Protection (KRA 2)
- Watershed Management (KRA 3)
- Recreation (KRA 2)



DRBC Programs

III. Regulation

- Withdrawals and Diversions
- Discharges (point & non-point)
- Project Review



DRBC Programs

IV. Intergovernmental & Public Relations

- Coordination and Cooperation (KRA 4)
- Advisory Committees (KRA 4)
- Outreach and Education (KRA 5)
- Interstate Dispute Resolution (KRA 4)

