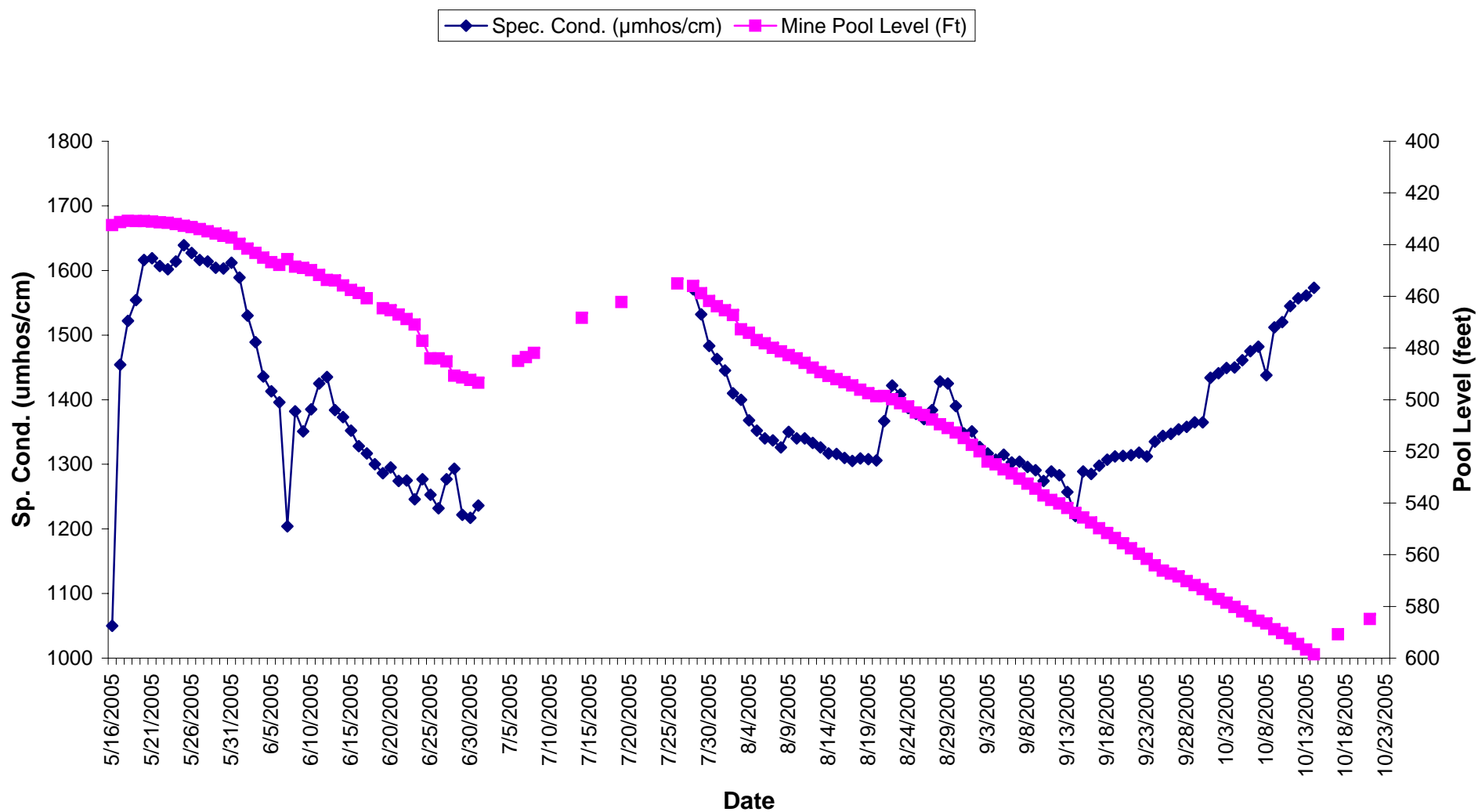


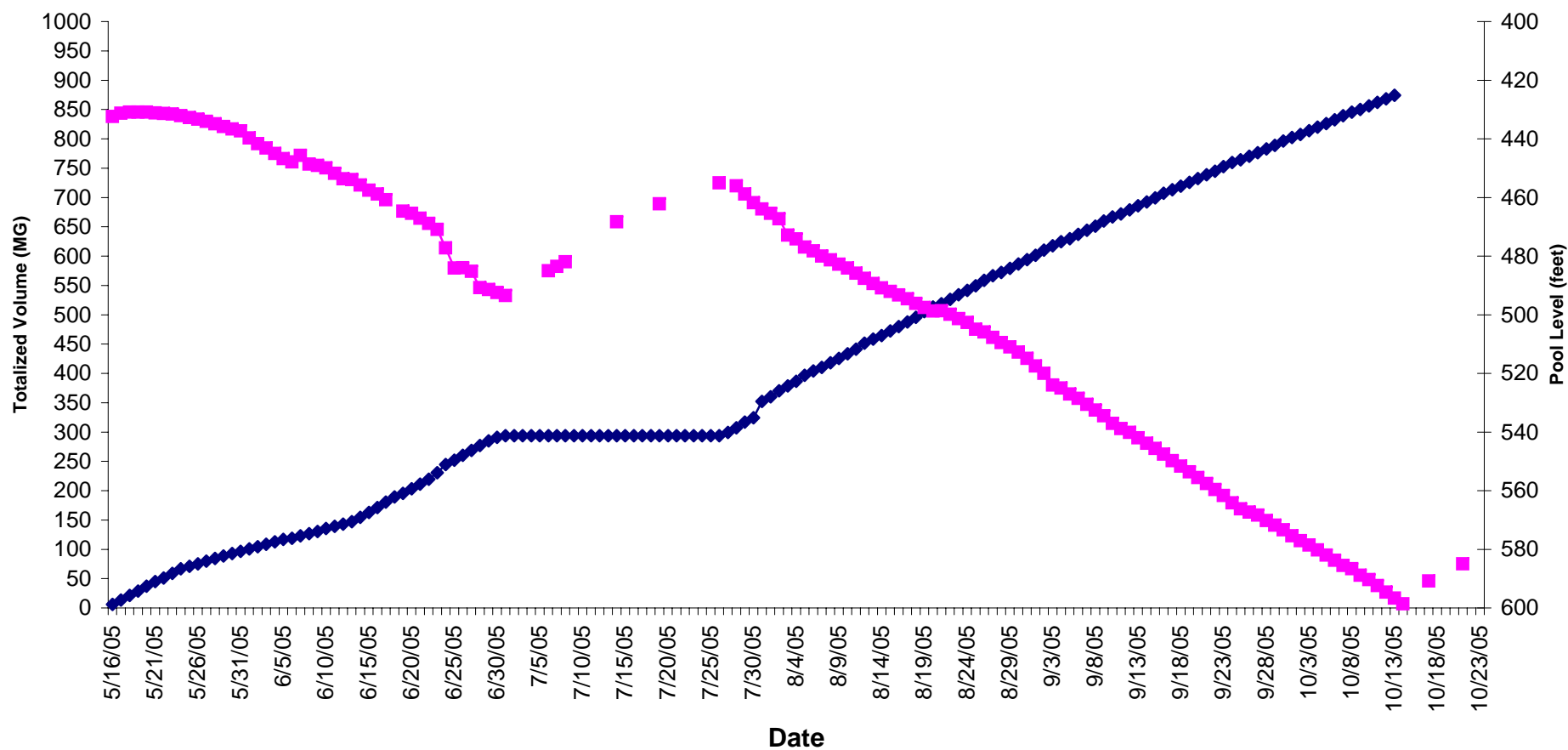
Wadesville Mine Water Conductance and Pool Level



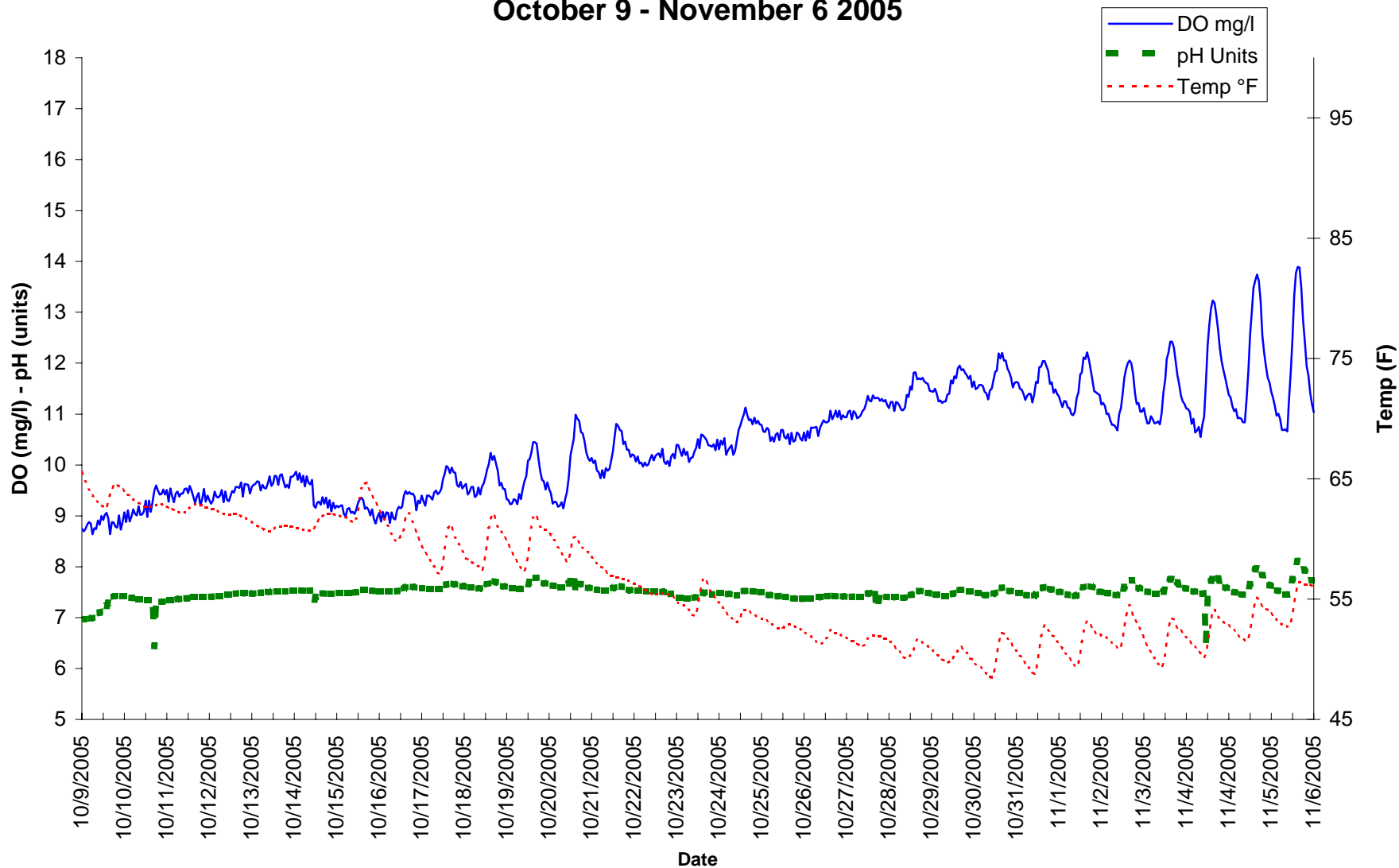
July 2 through July 26 release suspended, no data taken

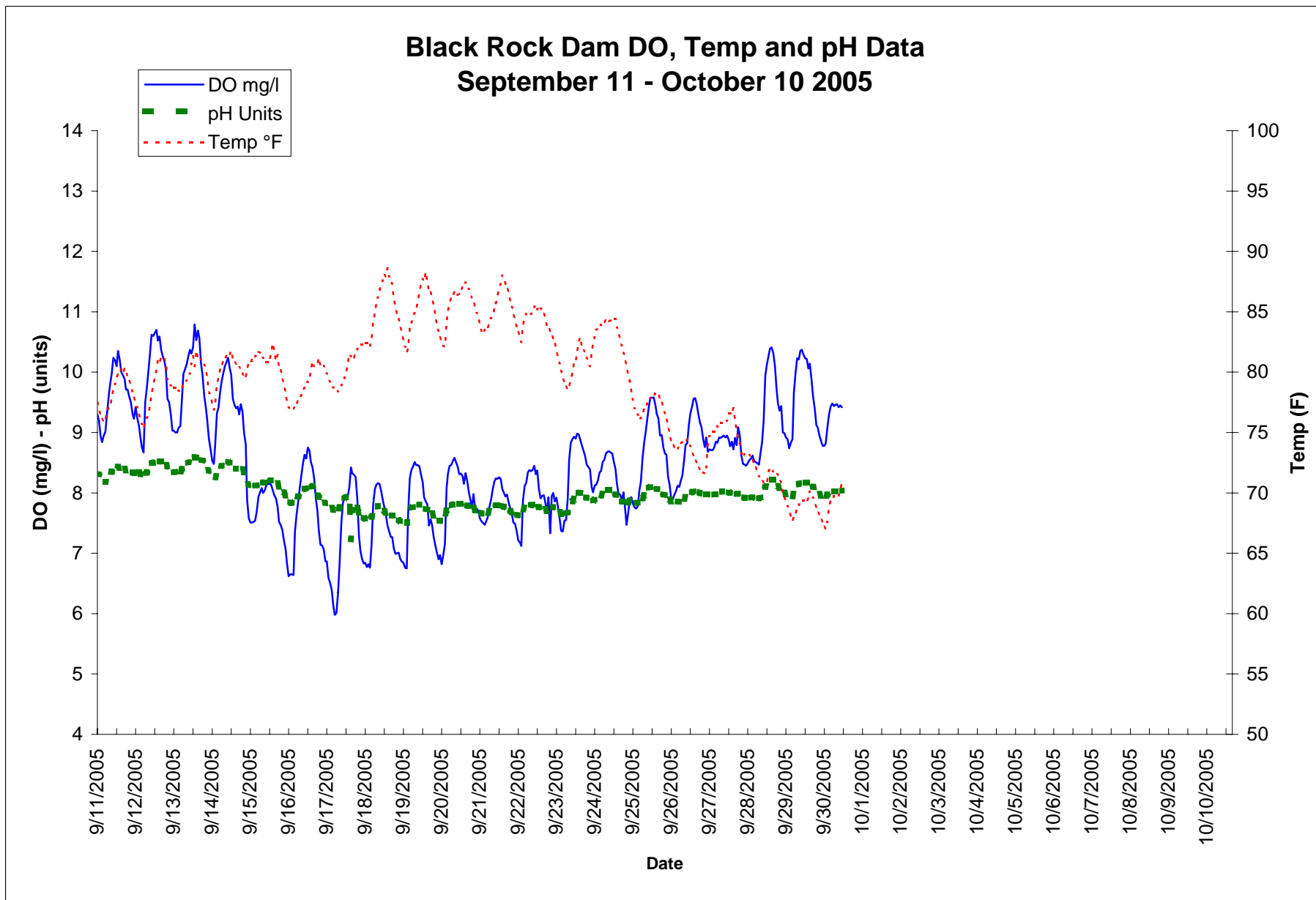
Wadesville Mine Water Pumped Volume and Pool Level

◆ Totalized Flow (Million Gallons) ■ Mine Pool Level (Ft)



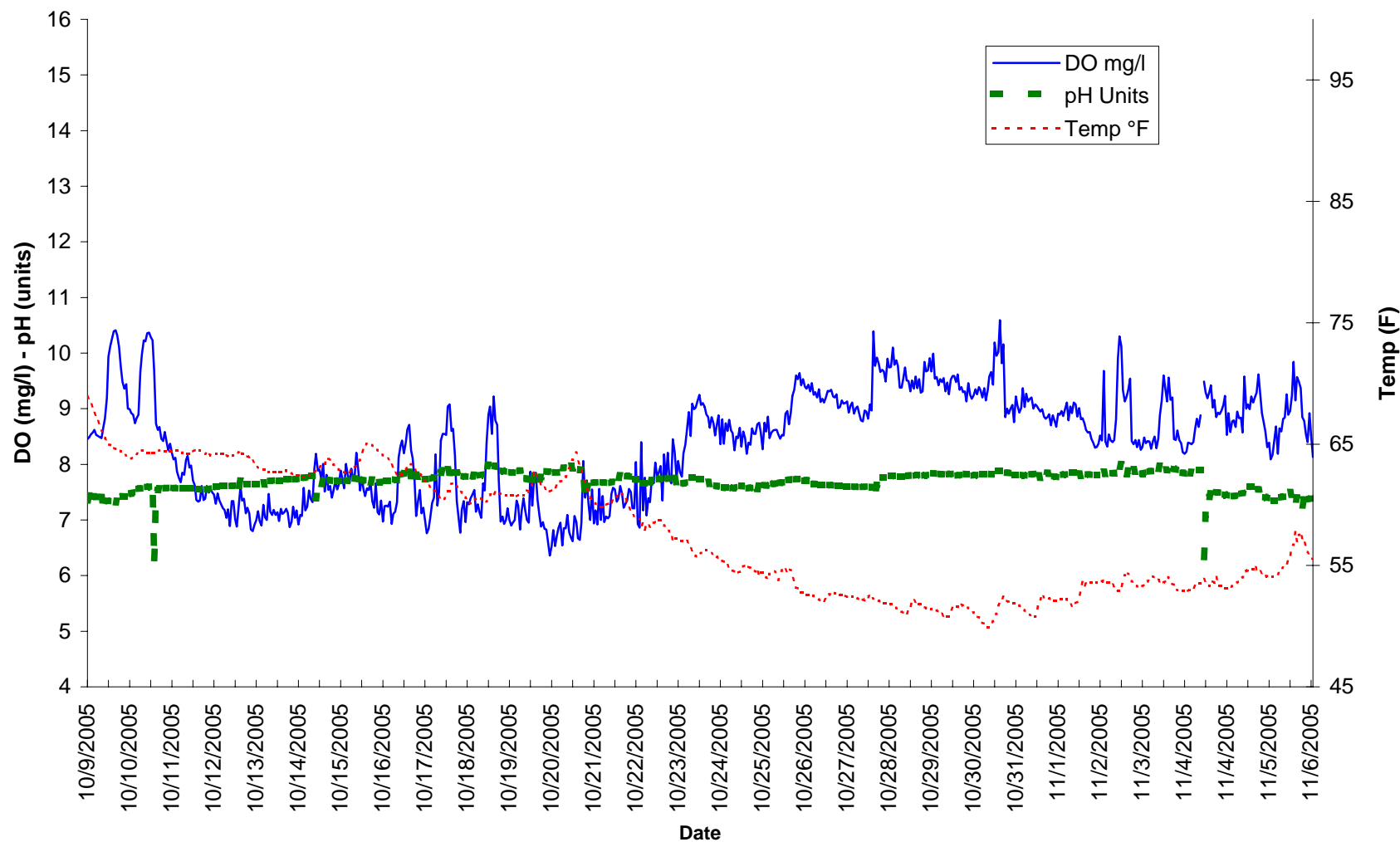
Limerick Intake DO, Temp and pH Data October 9 - November 6 2005

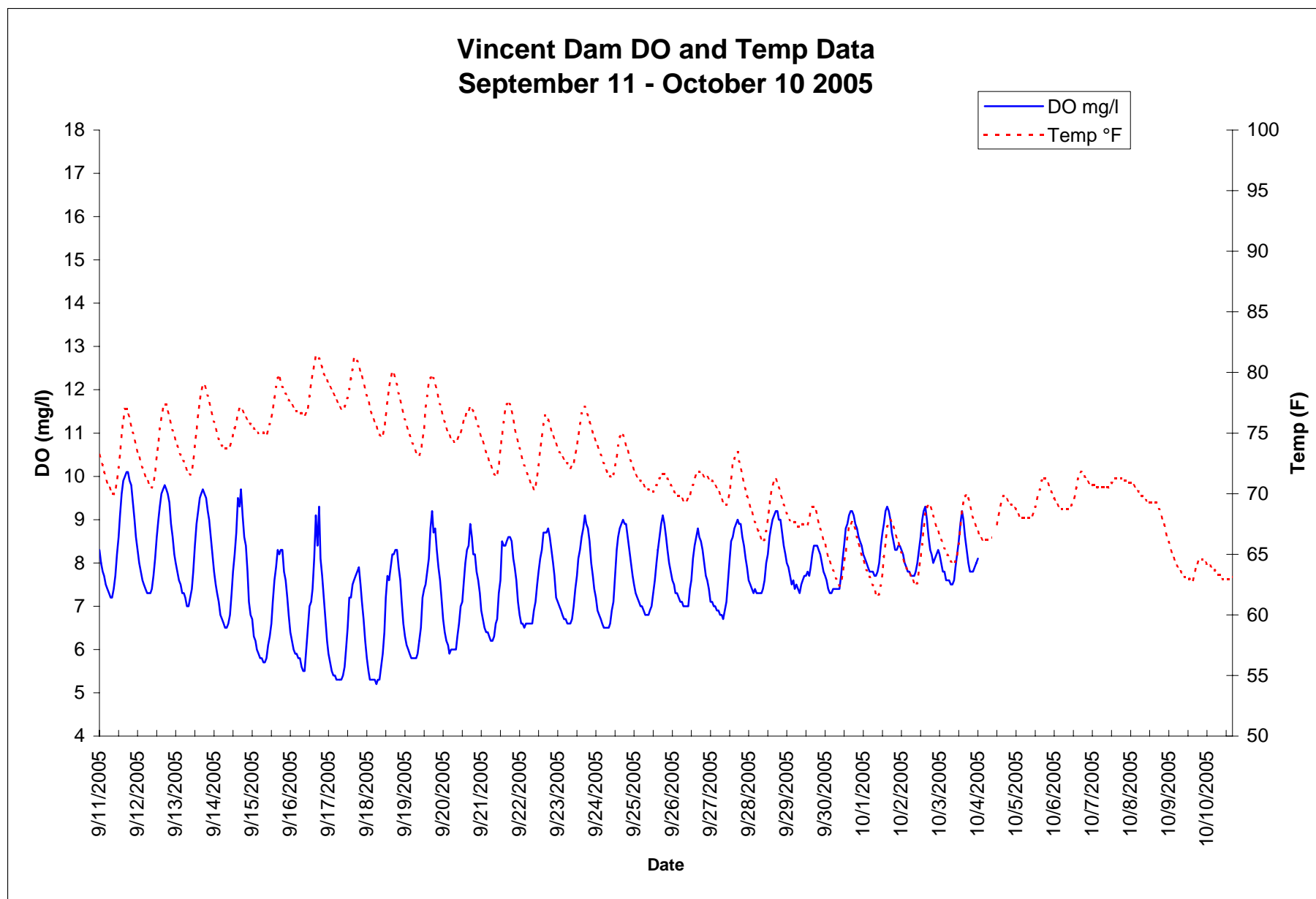




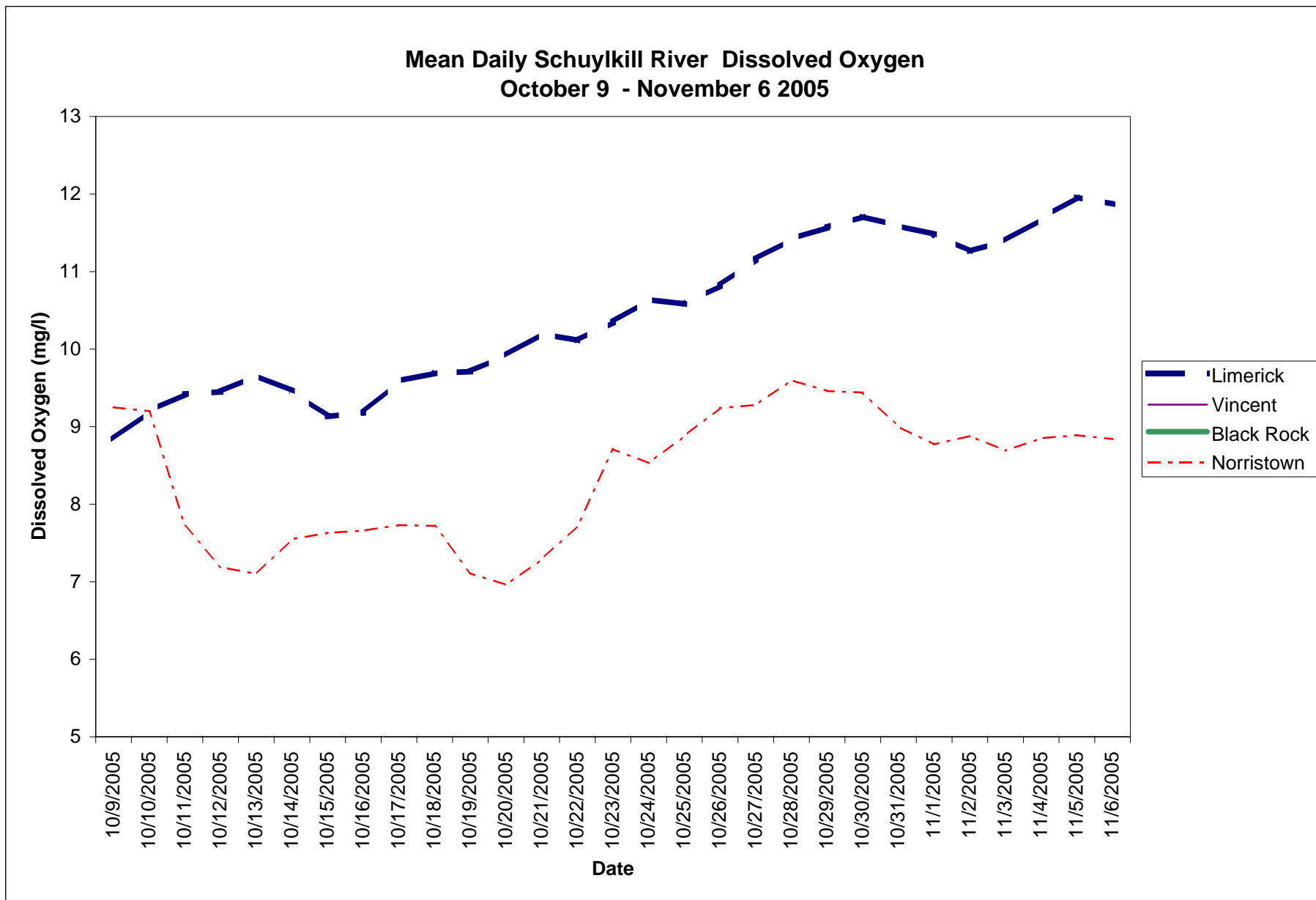
Equipment lost in flood no data after 9/30/05

Norristown Pool DO, Temp and pH Data October 9 - November 6 2005





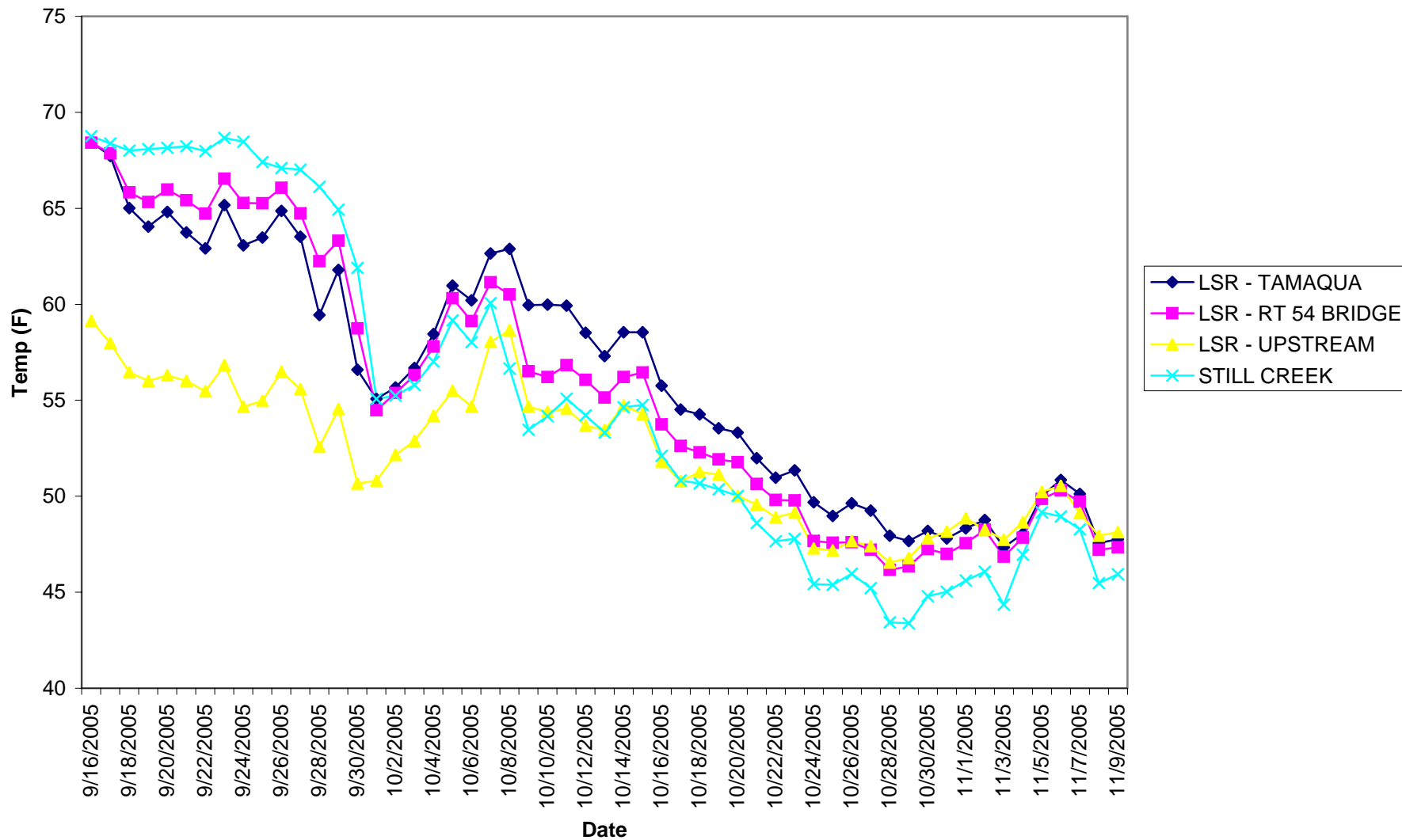
Provisional data provided by the USGS when available
 Dissolved oxygen data collection discontinued October through March by USGS



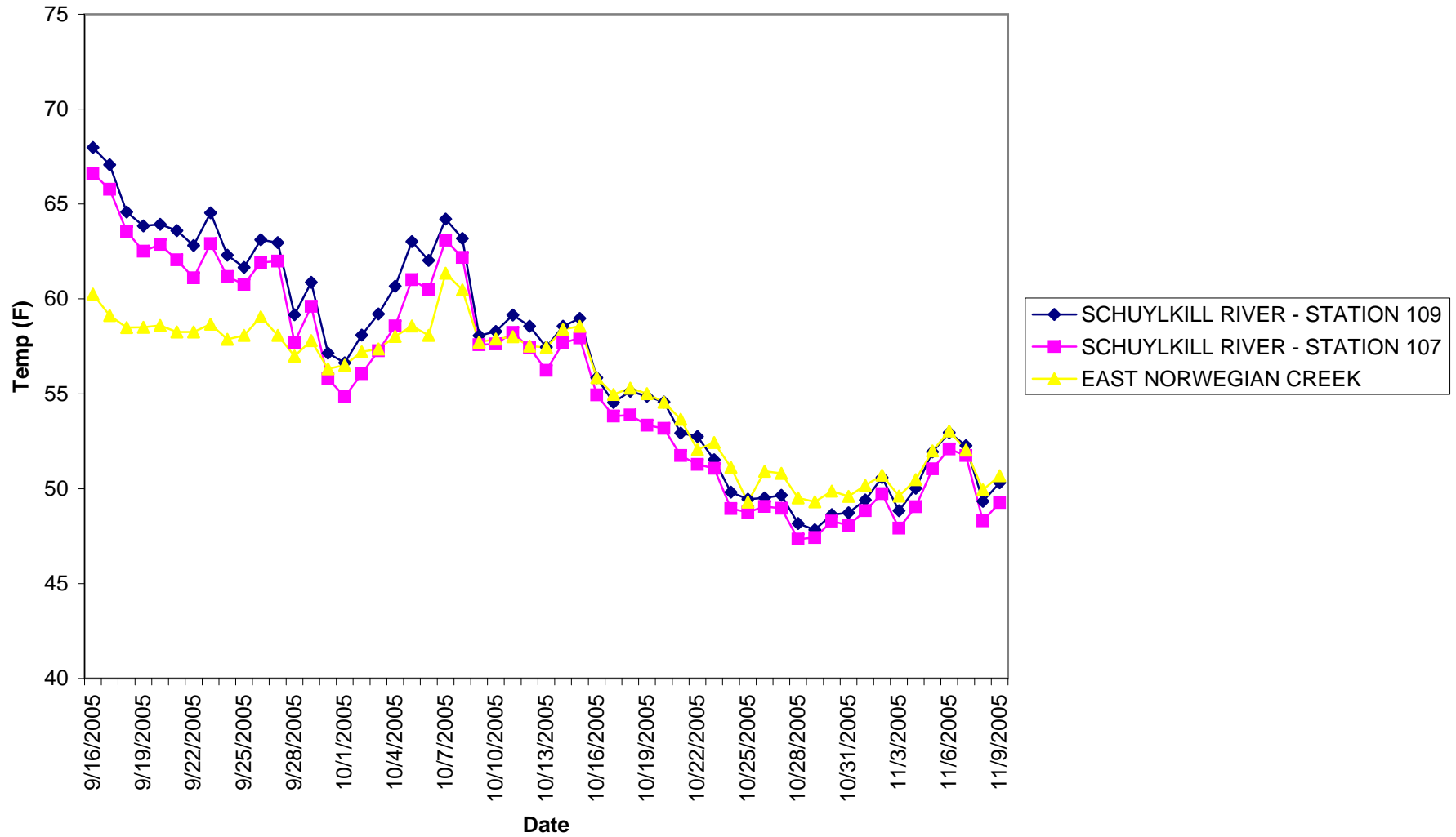
Vincent Dam data provided by USGS when available

Black Rock Dam equipment lost due to flood. No data after September 30

Little Schulykill River & Still Creek Daily Average Temperatures October - November 2005



Schuylkill River & E. Norwegian Creek Daily Average Temperatures October - November 2005



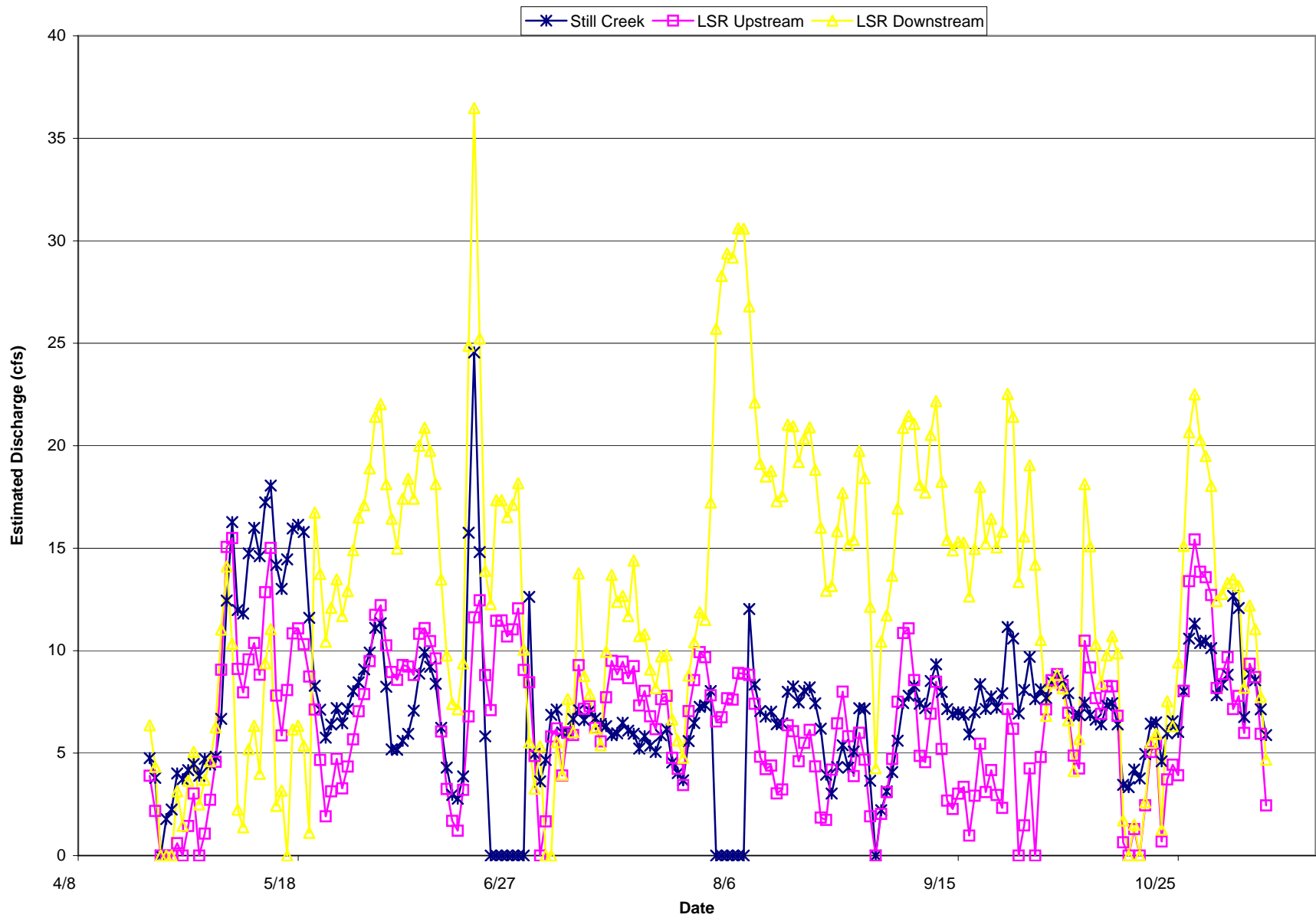


Figure 4.8-4. Estimated daily discharge of Still Creek and Little Schuylkill River upstream and downstream of Still Creek, April-November 2005.