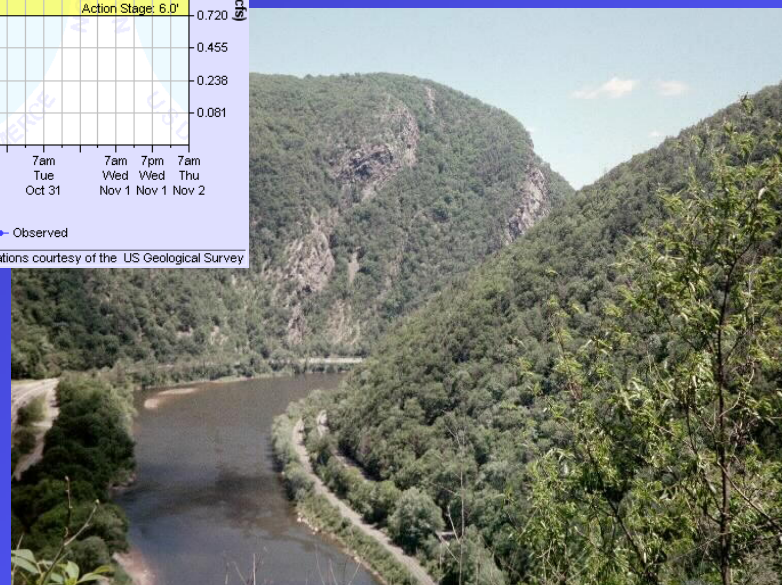
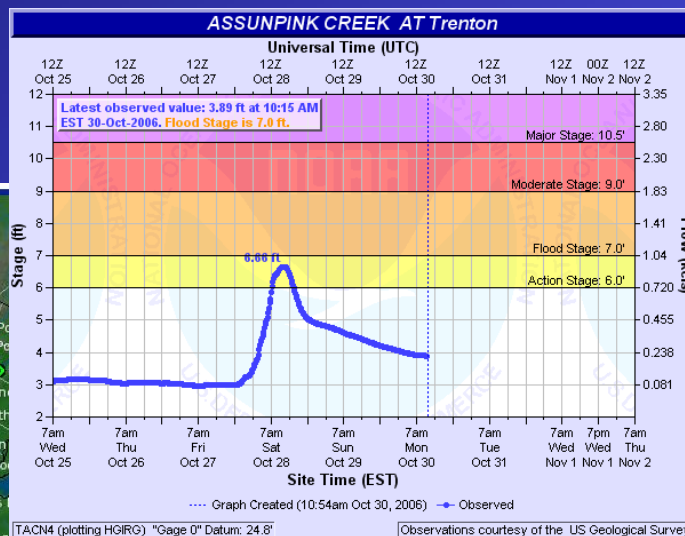
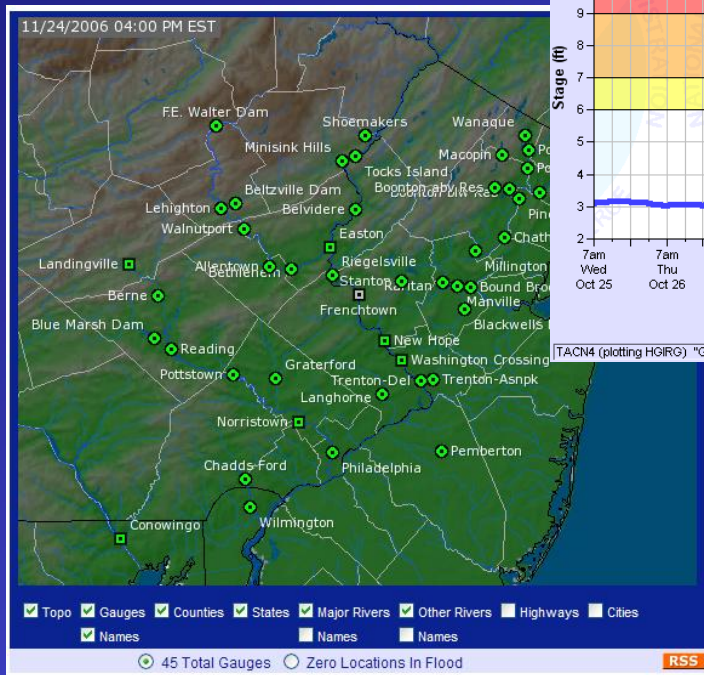




AHPS RSS Feeds AKA – EMAIL NOTIFICATION & MORE



May 2, 2007

Advanced Hydrologic Prediction Service
RSS Feeds – Laurie G. Hogan



What is RSS?

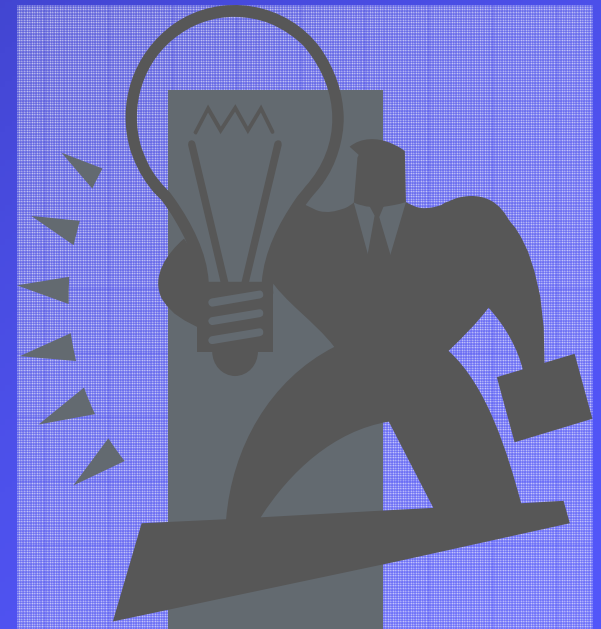
- RSS stands for Really Simple Syndication.
- Easy way to get important information.
- Information delivered directly to a “feed”.
- Does not need to clutter your email inbox – can send to a folder.
- Does not require you to browse websites to get information.
- Written in the Internet coding language known as XML (eXtensible Markup Language)



Uses of National Weather Service RSS Feeds

RSS provides an automatic feed of:

- River levels, forecasts and alert stages.
- Weather and flood warnings.
- Weather and flood watches.
- Hurricane information.
- Weather observations.
- & more.





AHPS RSS History Lesson 101

National Weather Service customer feedback said....

- *Perhaps an automated e-mail system for flooding hazards could be available at a nominal cost.*
- *Is it possible to setup in my email notifications for the Turtle River . We go into a flooding procedure at various stages of the watch/warning system.*
- *Do you offer an email or cell phone service of notification at the James River in Richmond when it is expected to reach flood stage?*



National Weather Service Advanced Hydrologic Prediction Service



An Automated E-mail Flood Warning System

John Yagecic, P.E.

P.O. Box 7360, 25 State Police Dr.,
West Trenton, NJ 08628-0360
Phone: 609-883-9500 Fax: 609-883-9522
www.drbc.net

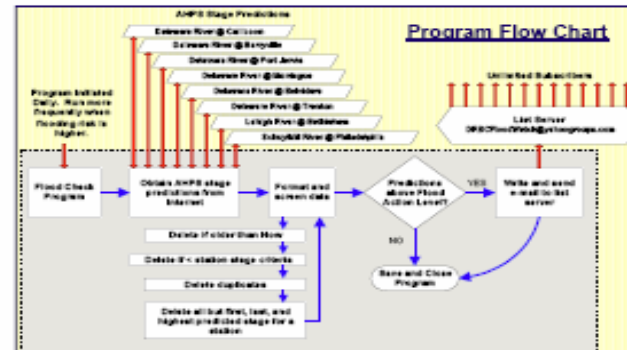


DRBC has developed an automated application that retrieves daily river forecasts from 8 stations from the National Weather Service's Advanced Hydrologic Prediction Service (AHPS).



Washingtons Crossing, Hurricane Ivan
September 2004

The program retrieves AHPS data from the internet and compares forecasted stages to station specific Flood Action Levels. If the forecasted stages exceed the station specific Flood Action Level, the program generates and sends an e-mail warning to a List Server. By subscribing to the List Server, individuals can get e-mail warnings about forecasted flood events on the main stem Delaware River, the Lehigh River, and the Schuylkill River.



National Weather Service's AHPS System

Data Filtering



To learn more or subscribe to the service go to:
<http://groups.yahoo.com/group/DRBCFloodWatch/>

For best coverage, sign up from multiple locations,
Home ~ Work ~ PDA ~ Cell Phones ~ wherever you have e-mail

Sample e-mail Alert



http://www.weather.gov/rss/



National Oceanic and Atmospheric Administration's

National Weather Service

weather



Site Map

News

Organization

Search

NWS

All NOAA

Local forecast by
"City, St"

City, St

XML RSS Feeds

Warnings

Current

By State/County...

UV Alerts

Observations

Radar

Satellite

Snow Cover

Surface Weather...

Observed Precip

Forecasts

Local

Graphical

Aviation

Marine

Hurricanes

Severe Weather

Fire Weather

Text Messages

By State

By Message Type

National

Forecast Models

Numerical Models

Statistical Models...

Climate

Past Weather

Predictions

Weather Safety

Weather Radio

Home > RSS

NOAA's NWS RSS Library

Really Simple Syndication (RSS) is a family of web formats used to publish frequently updated digital content. Most commonly used to update news articles and other content that changes quickly, RSS feeds may also include audio files (PodCasts) or even video files (VodCasts). Users of RSS content use programs called feed 'readers' or 'aggregators' (newer versions of Web browsers offer built in support for RSS feeds): the user 'subscribes' to a feed by entering the link of the RSS feed into their RSS feed reader; the RSS feed reader then checks the subscribed feeds to see if any have new content since the last time it checked, and if so, retrieves the new content and present it to the user.

XML

RSS Feed

Podcasting

[What is RSS?](#)

[What is Podcasting](#)

[Download an RSS Reader](#)

[Download Podcatching Software](#)

RSS Feeds

- **Hurricane/Tropical Cyclones**
 - Atlantic/Caribbean/Gulf of Mexico/Eastern Pacific
 - Central Pacific Hurricane Advisories
- **Severe Weather**
 - Severe Weather Outlooks & Watches, Mesoscale Discussions, Status Reports
 - Watch/Warnings/Advisories
- **Tsunami Warnings**
 - U.S. West Coast, British Columbia, and Alaska
 - Hawai'i
 - Puerto Rico/U.S. Virgin Is.
 - Pacific Ocean
 - Indian Ocean
- **River Conditions / Hydrology**
 - Observed River Conditions - Eastern U.S.
 - Routine Daily Forecasts of River Conditions - Eastern U.S.

May 2, 2007

Advanced Hydrologic Prediction Service
RSS Feeds – Laurie G. Hogan



TREN4 (plotting HGIRG) "Ga

- Printable Image
- About this graph
- Tabular Data
- XML**
- RSS

NO
rain
rain
NO
Tre

```

<?xml version="1.0" standalone="yes" ?>
- <site xmlns:xsi="http://www.w3.org/2001/XMLSchema-instance" generationtime="2006-11-09T21:09:24-
  timezone="EST5EDT" originator="PHI" name="MILLSTONE RIVER AT Blackwells Mills" id="BKWN4"
  xsi:noNamespaceSchemaLocation="http://weather.gov/ohd/hydroxc/schemas/hydrogen/HydroGenDa
- <disclaimers>
  <AHPXMLversion>1.1</AHPXMLversion>
  <status>Experimental</status>
  <quality trace="observed">not manually quality-controlled</quality>
  <observed trace="observed" audience="public" />
  <general audience="public" />
  <standing trace="forecast" audience="internal" dignity="unofficial">Forecast data shown here are guida
    Please refer to your local NWS office for the latest official public river forecasts.</standing>
</disclaimers>
- <sigstages>
  <low units="ft">-999</low>
  <action units="ft">7.0</action>
  <bankfull units="ft">0</bankfull>
  <flood units="ft">9.0</flood>
  <moderate units="ft">10.0</moderate>
  <major units="ft">15.0</major>
  <record units="ft">21.0</record>
</sigstages>
- <sigflows>
  <low units="kcfs">-1</low>
  <action units="kcfs">2.58</action>
  <flood units="kcfs">4</flood>
  <bankfull units="kcfs">-1</bankfull>
  <moderate units="kcfs">4.95</moderate>
  <major units="kcfs">12.3</major>
  <record units="kcfs">26.2</record>
</sigflows>
<zerodatum units="ft MSL">27.0</zerodatum>

```

And eight additional pages of the same...



National Weather Service Advanced Hydrologic Prediction Service



11/24/2006 04:00 PM



- Topo
- Gauges
- Names

Alert - TACN4 - Assunpink Creek at Trenton (New Jersey)



Alert conditions are not currently being met.

Alert Stage: 6 ft

Flood Stage: 7 ft

Latest Observation: 4.1 ft

Observation Time: May 1, 2007 09:15 AM EST

Highest Forecast: N/A

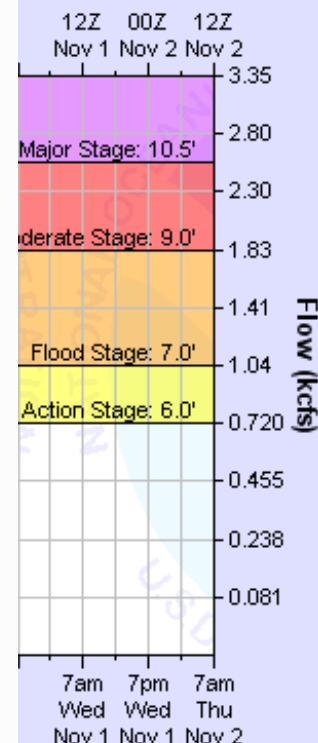
Highest Forecast Time: Tue May 1 15:42:28 2007

Last Forecast: N/A

Last Forecast Time: Tue May 1 15:42:28 2007

AHPS Hydrologic Service Area Homepage:

<http://newweb.erh.noaa.gov/ahps2/index.php?wfo=phi>



of the US Geological Survey



So How Can I Learn How to Use RSS?

1. Stay awake for the rest of this presentation.
2. Ask the resident smartie pants in your office.
3. Take the green handout home, and read carefully.



- You may already have the tools available (**RSS Readers**) and you don't even know it.
- National Weather Service has the "**RSS Feeds**".

The “Short” List of RSS Readers/Tools

Email Applications

- Thunderbird
- Microsoft Outlook 2007

Browsers

- Internet Explorer 7
- Firefox + Sage
- Opera

Subscribe to a service, eg.

- Squeet
- Feedblitz



✿ *Or search for “RSS Readers” in your favorite Internet search engine*

Mozilla Thunderbird

[http://kb.mozillazine.org/RSS_basics_\(Thunderbird\)](http://kb.mozillazine.org/RSS_basics_(Thunderbird))

Thunderbird Mail - News & Blogs

RSS News & Blogs



Manage subscriptions

Accounts



View settings for this account



Create a new account

Advanced Features



Search messages



Manage message filters

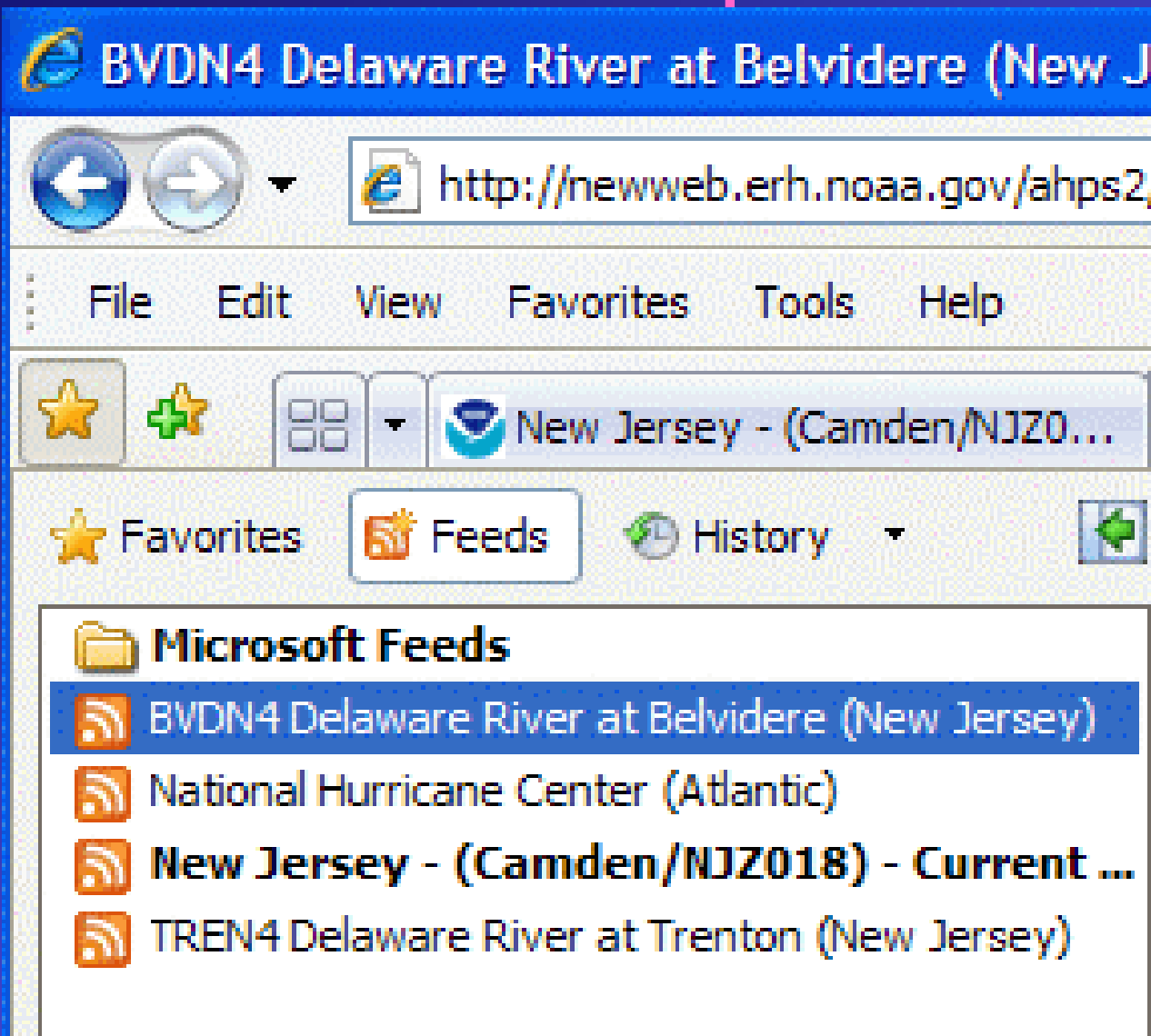
RSS Subscriptions

Note: Removing or changing the folder for a feed will not affect previously downloaded articles.

- + LTFN4 Passaic River at Little Falls (New Jersey)

Title: <no RSS feed selected>
Location:

Internet Explorer 7





National Weather Service

Advanced Hydrologic Prediction Service



Find Your Favorite National Weather Service RSS “feeds”

- Main NWS RSS feed page at:
<http://www.weather.gov/rss>
- Main AHPS RSS feed page:
<http://www.weather.gov/ahps/rss>
- Or AHPS RSS feeds can be found under the hydrograph at any river location of interest.



National Weather Service Advanced Hydrologic Prediction Service



National Weather Service Advanced Hydrologic Prediction Service

[Home](#)[News](#)[Organization](#)

Search for:

[NWS](#)Local forecast by
"City, St"[NOAA](#) > [NWS](#) > [AHPS](#) > [RSS Feeds](#)[RSS Feeds](#)[Observed](#)[Forecasts](#)[Alerts](#)

***Experimental* RSS Feeds for Observed, Forecast and Alert River Conditions**

This page provides access to observed and forecast river conditions in *RSS/XML* feeds/format. This is an experimental product of the National Weather Service Eastern Region Headquarters. Comments and feedback are welcome. A Product Description Document is also available.

AHPS RSS Feeds for:

- [Observed River Conditions](#)
- [Routine Daily Forecasts of River Conditions](#)
- ["Alert" River Conditions Based on Local Action Settings](#)

[Warnings](#)
[Current](#)
[By State/County...](#)
[UV Alerts](#)
[Observations](#)
[Radar](#)
[Satellite](#)
[Snow Cover](#)
[Surface Weather...](#)
[Forecasts](#)
[Local](#)
[Graphical](#)
[Aviation](#)
[Marine](#)

May 2, 2007

Advanced Hydrologic Prediction Service
RSS Feeds – Laurie G. Hogan



Home > AHPS > RSS Feeds > "Alert" River Conditions Based on Local Action Settings

- RSS Feeds
- Observed
- Forecasts
- Alerts

"Alert" River Conditions Based on Local Action Settings

This page provides access to observed and forecast river conditions in RSS/XML feeds/format. This is an experimental product of the National Weather Service Eastern Region Headquarters. Comments and feedback are welcome. A Product Description Document is also available.

Note: The alerts utilize both observations and forecast information (where available). Forecasts are available at select river locations where data histories and forecast procedures make them possible. This RSS feed is based on the original development efforts of John Yagecic of the Delaware River Basin Commission.

To subscribe to one of our RSS feeds below, copy the URL (web address) of the content you are interested in and insert this to your newsreader (RSS reader) or aggregator (usually as an "add feed" option).

By State

- Connecticut
- Delaware
- District of Columbia

By Gauge

- XML
- XML
- XML

By County

- XML
- XML
- XML



[RSS Feeds](#)

[Observed](#)

[Forecasts](#)

[Alerts](#)

"Alert" River Conditions Based on Local Action Settings for **Mercer County**

This page provides access to observed and forecast river conditions in [RSS/XML feeds/format](#). This is an experimental product of the National Weather Service Eastern Region Headquarters. [Comments and feedback](#) are welcome. A [Product Description Document](#) is also available.

Note: The alerts utilize both observations and forecast information (where available). Forecasts are available at select river locations where data histories and forecast procedures make them possible. This RSS feed is based on the original development efforts of John Yagecic of the [Delaware River Basin Commission](#).

To subscribe to one of our RSS feeds below, copy the URL (web address) of the content you are interested in and insert this to your newsreader (RSS reader) or aggregator (usually as an "add feed" option).

New Jersey Counties	Observed	Forecast	Alerts
Assunpink Creek at Trenton (TACN4)	XML	N/A	XML
Delaware River at Riegelsville (RGLN4)	XML	N/A	XML
Delaware River at Trenton (TREN4)	XML	XML	XML
Delaware River at Washington Crossing (WASN4)	XML	N/A	XML

[Return to RSS Home](#)

<http://www.weather.gov/alerts>

Home > Alerts

Experimental XML Feeds and Web Displays of Watches, Warnings, and Advisories

NOAA's National Weather Service offers several XML services
|Forecasts||Watch/warnings||Current Observations||Tropical Cyclone Advisories||Storm
Prediction Center Forecast Products||Change Notices|

This page provides access to NWS watches, warnings, advisories, and other similar products several different formats. Select a state or product name to view a list of active alerts in your web browser. These files are updated about every two minutes. Tropical Prediction Center/Storm Prediction center feeds are updated on an as needed basis. RSS and CAP/XML lists based on state and NWS forecast zones are provided to aid the automated dissemination of this information. More information on [RSS](#) and [CAP/XML](#) formats/feeds. This is an **experimental** product of the National Weather Service. [Comments and feedback](#) are welcome. A [Product Description Document](#) is also available.

[A](#)|[C](#)|[D](#)|[F](#)|[G](#)|[H](#)||[K](#)|[L](#)|[M](#)|[N](#)|[O](#)|[P](#)|[R](#)|[S](#)|[T](#)|[U](#)|[V](#)|[W](#)|[--U.S.--](#)

	HTML/WEB	RSS	CAP	RSS
	By State			By County/Zone
Alabama		XML	CAP	XML
Alaska		XML	CAP	XML
America Samoa		XML	CAP	XML
Arizona		XML	CAP	XML
Arkansas		XML	CAP	XML
California		XML	CAP	XML
Colorado		XML	CAP	XML
Connecticut		XML	CAP	XML

May 2, 200

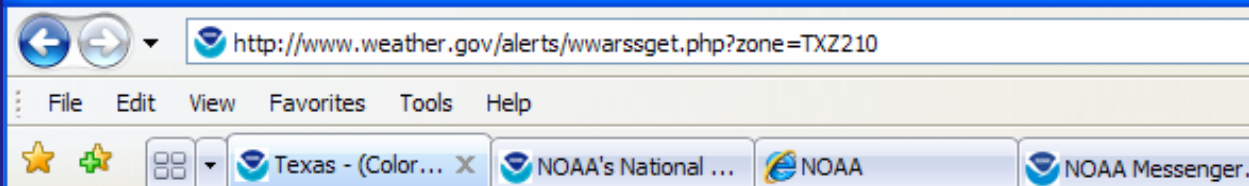


National Weather Service

Advanced Hydrologic Prediction Service



Texas - (Colorado/TXZ210) - Current Watches, Warnings and Advisories for Texas Issued by



Texas - (Colorado/TXZ210) - Current Watches, Warnings and Advisories for T by the National Weather Service

You are viewing a feed that contains frequently updated content. When you subscribe t
added to the Common Feed List. Updated information from the feed is automatically download
computer and can be viewed in Internet Explorer and other programs. [Learn more about feeds.](#)

[Subscribe to this feed](#)

Severe Thunderstorm Warning - Colorado (Texas)



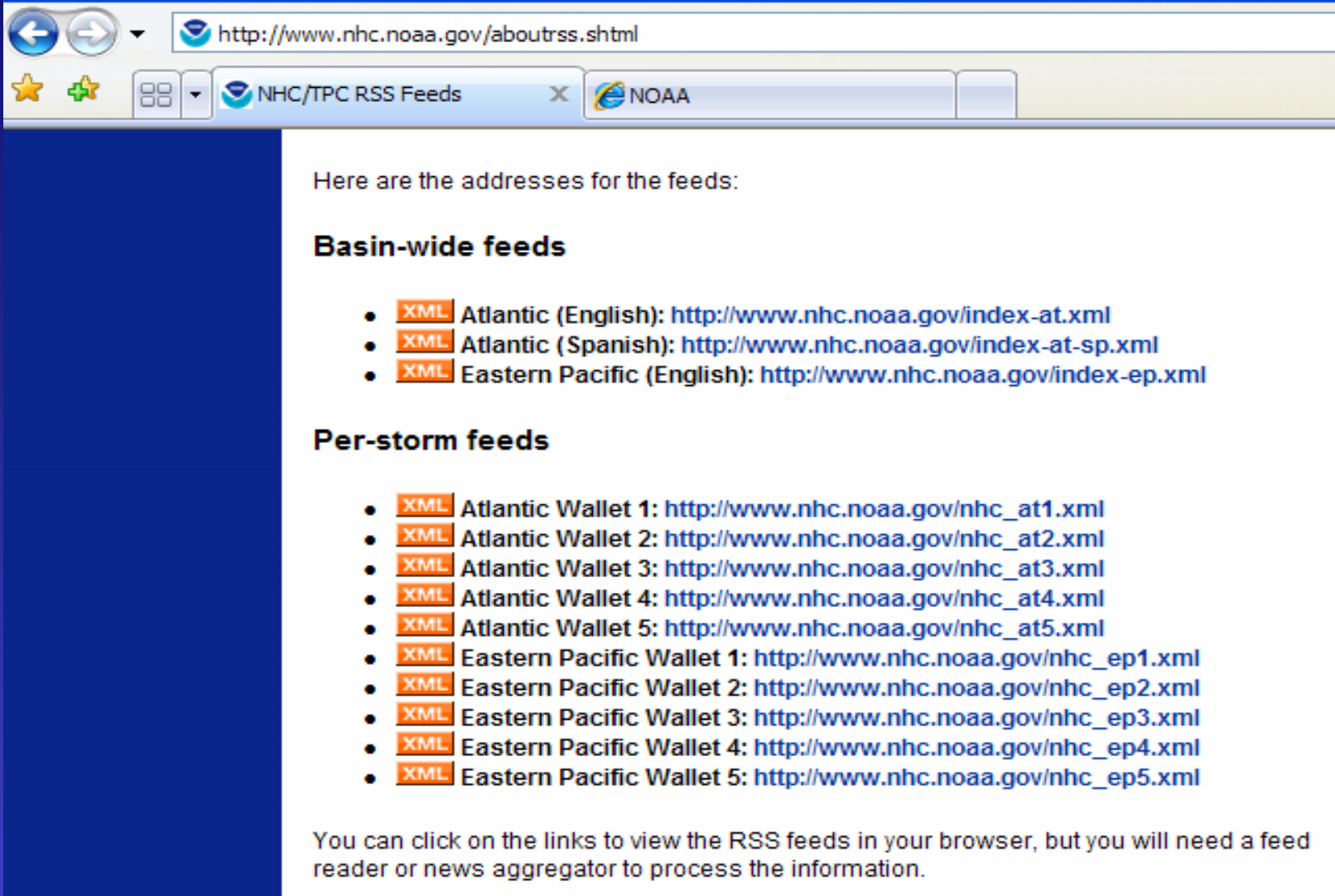
WESTERN COLORADO COUNTY IN SOUTHEAST TEXAS

* UNTIL 330 PM CDT

* AT 300 PM CDT...NATIONAL WEATHER SERVICE DOPPLER RADAR INDICATED A
SEVERE THUNDERSTORM. THIS STORM WAS LOCATED 11 MILES EAST OF
SUBLIME...MOVING EAST AT 15 MPH. MAIN THREAT FOR THIS STORM
INCLUDE LOCALLY GUSTY WINDS TO 50 MPH AND HAIL TO NICKLE SIZE.

May 2, 2007

Hurricane RSS feeds



Here are the addresses for the feeds:

Basin-wide feeds

- **XML** Atlantic (English): <http://www.nhc.noaa.gov/index-at.xml>
- **XML** Atlantic (Spanish): <http://www.nhc.noaa.gov/index-at-sp.xml>
- **XML** Eastern Pacific (English): <http://www.nhc.noaa.gov/index-ep.xml>

Per-storm feeds

- **XML** Atlantic Wallet 1: http://www.nhc.noaa.gov/nhc_at1.xml
- **XML** Atlantic Wallet 2: http://www.nhc.noaa.gov/nhc_at2.xml
- **XML** Atlantic Wallet 3: http://www.nhc.noaa.gov/nhc_at3.xml
- **XML** Atlantic Wallet 4: http://www.nhc.noaa.gov/nhc_at4.xml
- **XML** Atlantic Wallet 5: http://www.nhc.noaa.gov/nhc_at5.xml
- **XML** Eastern Pacific Wallet 1: http://www.nhc.noaa.gov/nhc_ep1.xml
- **XML** Eastern Pacific Wallet 2: http://www.nhc.noaa.gov/nhc_ep2.xml
- **XML** Eastern Pacific Wallet 3: http://www.nhc.noaa.gov/nhc_ep3.xml
- **XML** Eastern Pacific Wallet 4: http://www.nhc.noaa.gov/nhc_ep4.xml
- **XML** Eastern Pacific Wallet 5: http://www.nhc.noaa.gov/nhc_ep5.xml

You can click on the links to view the RSS feeds in your browser, but you will need a feed reader or news aggregator to process the information.



Example of Web RSS Subscription Service

Add Feed

The web is filled with syndicated content that is always being updated, and you can preview it right here with Squid. To know the feed url you would like to view, enter the address in the text box. Set the options below to customize how your feed delivered. Visit Reader's Learn More and/or Help page for more.

FEED URL: 

Preview


ex: http://rss.cnn.com/rss/cnn_topstories.rss

OPTIONS:

style:

HTML Email 

frequency:

Live 

day:

Sunday 

time:

12 AM 

Subscribe

Subscribed Feeds



National Weather Service

Advanced Hydrologic Prediction Service



Subscription process uses email address(es) for the notification:

- work email joe.atwork@lovemyjob.gov
- personal email jane.home@lovemykidsandthedog.com
- cell phone [6315555555@mycellphoneiswonderful.com](tel:6315555555)

My Feeds

Hello laurie.hogan! You are currently subscribed to the following feeds:

Feed Name	XML	Last Posting	Unsubscribe
Pennsylvania - (Philadelphia/PAZ071) - Current Watches, Warnings and Advisories for Pennsylvania Issued by the National Weather Service (1)	XML	2008-11-09 11:53:51.0	Unsubscribe

Add Feed

To subscribe to a new feed, simply paste the RSS or Atom feed URL here:



National Weather Service Advanced Hydrologic Prediction Service



For the really ambitious –
you can download RSS
Reader software to your
PDA!



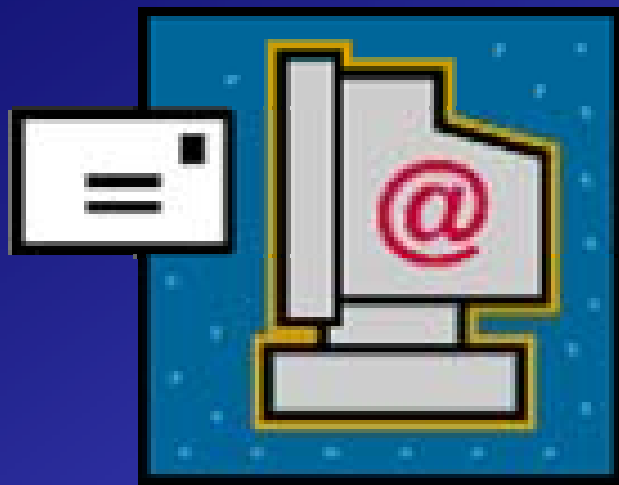
May 2, 2007

Advanced Hydrologic Prediction Service
RSS Feeds – Laurie G. Hogan



National Weather Service

Advanced Hydrologic Prediction Service



Any questions:

laurie.hogan@noaa.gov



May 2, 2007

Advanced Hydrologic Prediction Service
RSS Feeds – Laurie G. Hogan