



Visitor Guide



On September 20, 1805 Captain William Clark and some hunters came onto the Weippe Prairie where they encountered three Nez Perce boys. He offered them pieces of ribbon. They returned with an elder, Twisted Hair, marking the beginning of the expedition's relationship with the Nez Perce. Illustration by Nakia Williamson, Property of Nez Perce NHP, NPS.

The Promise

Goodwill, happy memories, and promises of peace, friendship, and commerce were etched into the hearts of the Nimiipuu when Lewis and Clark returned to their homeland in the spring of 1806. A month later, when they continued their journey east, they left behind the promise of trade with the United States; the promise of a friendly relationship with the federal government; and they left behind infants, legacies of this powerful relationship.

These promises were repeatedly tested and ultimately broken. The coming of Protestant missionaries in the 1830s and a growing American presence in the Pacific Northwest foreshadowed the shift from accommodation and friendship to division and distrust. Facing these challenges, the Nez Perce affixed their marks to the Treaty of 1855 that preserved a substantial portion of the Nimiipuu homeland. The discovery of gold on the Reservation in the 1860s triggered yet another treaty process. The 1863 Treaty removed millions of acres from the Nimiipuu homeland, creating the conditions for fur-

ther conflict. In 1877, the promises of Lewis and Clark were put to their severest test. Nimiipuu bands living in northeastern Oregon were ordered to relocate to the Reservation in Idaho. Years of injustice came to a boil and some sought retribution, resulting in a clash with the U.S. Army in June, 1877. Many died over the next four months, leaving scars on the soul and character of the Nimiipuu. In 1906, one hundred years after Lewis and Clark left the region, the promises of peace, trade, and cordial relations were left tattered and torn.

In the bicentennial year of the Lewis and Clark expedition, the Nimiipuu are still here. This allows for an opportunity to reflect on the events of 1806 and glimpse into the future. From June 5 to 17, 2006, the traveling exhibit, Corps II, will be in Lewiston. From June 14 to 17, the Nez Perce Tribe will host The Summer of Peace. The Tribe will offer activities and events in Lewiston and other local communities that reflect on the role the Nimiipuu have had in shaping the past, present, and future of this region. For more information on events, please visit www.the.summerofpeace.org or call the park's visitor center at (208) 843-7001.

Along The Way - Wihnepe Wiyatkayn

In the past, Nez Perce men recorded important events by illustrating them on buffalo hides. Nez Perce artist Nakia Williamson-Cloud continues this artistic tradition in a show of his paintings and illustrations on display from June 1 to October 30, 2006 at the Spalding Visitor Center of Nez Perce National Historical Park. The exhibit will feature paintings and illustrations commissioned by the National Park Service and the USDA Forest Service.

Nakia's cultural knowledge is part of his identity as an artist. "It is not too often" Nakia says, "that illustrations are done by someone who is native and has personal knowledge of material culture of the subjects they are illustrating." Nakia's attention to detail is evident as he portrays various time periods in Nez Perce history and brings to life the events he is illustrating.

Nakia attended the Institute of American Indian Art in Santa Fe, New Mexico and has won awards and praise for his work. His family lives in Lapwai, Idaho where he works for the Nez Perce Tribe's cultural resources division.



Nakia Williamson-Cloud at work on a painting.

Lewis and Clark Sites

Nez Perce National Historical Park includes a number of sites that Captains Meriwether Lewis and William Clark passed through or camped at on their journey across western Montana and central Idaho.



Spalding Visitor Center

Ranger programs on Nez Perce history and culture are featured here as well as exhibits, a film, and book store. Information on the Lewis and Clark trail and other sites associated with the expedition are also available.



Canoe Camp

At Canoe Camp Lewis and Clark made the transition from land to water. From September 26 to October 7 1805, with some assistance from the Nez Perce, the Corps of Discovery built several dugout canoes for the trip down the river. Canoe

Camp is located 2.5 miles west of Orofino, Idaho on U.S. Highway 12 and has outdoor exhibits.



Weippe Prairie

On September 20, 1805 William Clark came onto the prairie after ten days of atrocious weather and arduous trail conditions. The approximate location where Clark entered the prairie is off of Highway 11 approximately 3 miles southeast of the town of

Weippe. Follow the signs to the turn out. The Weippe Discovery Center also has exhibits related to Lewis and Clark.



Lolo Trail and Pass

Visitors can retrace the route that Lewis and Clark took in 1805 and 1806 on U.S. Highway 12 over Lolo Pass or on a primitive dirt road known as the Lolo Motorway (Forest Road 500). A rest area and visitor center are located at Lolo Pass. The rest

area is open twenty-four hours a day; the visitor center is open seven days a week from mid-May through mid-September from 8:30 am to 5:30 pm (PDT). Call (208) 942-1234 for more information.

PLEASE NOTE: Forest Road 500 is suitable **only** for high clearance vehicles. Trailers are not recommended. For more information please contact the Lochsa Ranger District office at (208) 926-4274 or the Clearwater National Forest website at www.fs.fed.us/r1/clearwater/



Long Camp

Delayed in crossing the Bitterroot Mountains on their return journey in 1806, the expedition lived among the Nez Perce for a month at a site known as Long Camp in present day Kamiah, Idaho. The site of Long Camp is now occupied by a sawmill and lumber yard. This is private property - **there is no public access**. An interpretive sign is located on a pullout south of Kamiah on Hwy 12.



Big Hole National Battlefield

On July 3, 1806 at Travelers Rest near Missoula, Montana, Lewis and Clark split the expedition into two groups. On July 6, Clark's group camped at Trail Creek, a few miles west of the Battlefield. The next day they crossed into the Big Hole valley and

continued to a campsite near present day Jackson. Regional information on Lewis and Clark is available at the park's visitor center.

Archeological sites, battlefields and artifacts are protected by state and federal law. Anyone who injures, destroys or appropriates artifacts or objects of antiquity on park lands is subject to arrest and prosecution to the maximum extent of the law.

Please call (208) 843-7001 in Idaho and (406) 689-3155 in Montana to report incidents.

Nez Perce National Historical Park - Quick Reference

Nez Perce National Historical Park

39063 US Hwy 95
Spalding, ID 83540

Phone: (208) 843-7001

Fax: (208) 843-7003

E-Mail: NEPE_Visitor_Information@nps.gov

Website: www.nps.gov/nepe

Spalding Visitor Center

Located ten miles east of Lewiston, Idaho on U.S. Highway 95.

Summer: Memorial Day to Labor Day - Daily
8:00 am to 5:00 pm

Rest of the Year: Daily, 8:00 am to 4:30 pm

Closed: Thanksgiving, Christmas and New Year's.

The visitor center offers exhibits, films, and a bookstore on Nez Perce culture and history.

Fees: Free

Restrooms are accessible. Park film has open captions and audio description is available for the park film and museum exhibit.

Big Hole National Battlefield

P.O. Box 237
Wisdom, MT 59761

Phone: (406) 689-3155

Fax: (406) 689-3151

E-Mail: BIHO_Visitor_Information@nps.gov

Website: www.nps.gov/biho

Visitor Center

Located ten miles west of Wisdom, Montana on State Highway 43.

Summer: May 27 - September 6, 2006
9:00 am to 6:00 pm

Rest of the Year: 9:00 am to 5:00 pm

Closed: Thanksgiving, Christmas and New Year's

The visitor center offers exhibits, a film, and a bookstore on the Nez Perce War of 1877.

Fees: May 27-September 24, 2006

\$5.00 per vehicle

\$3.00 Person traveling alone

Restrooms and visitor center are accessible.

Bear Paw Battlefield

301 Ohio
Chinook, MT 59523

Phone: (406) 357-3130

Fax: (406) 357-3140

E-Mail: NEPE_Bear_Paw@nps.gov

Website: www.nps.gov/nepe

Visitor Center

Located in the Blaine County Museum
501 Indiana St., Chinook, Montana.

Summer: Memorial Day to Labor Day
Mon. to Sat. 8:00 am to 5:00 pm

Closed between noon and 1 pm

Sunday: Noon to 5:00 pm.

Rest of the Year: Monday through Friday,
1pm to 5pm

Located 16 miles south of Chinook, Montana on Route 240. The battlefield is open daily from dawn to dusk with a self guided trail, picnic tables, and vault toilets.

Fees: Free



Comments?

Editor, Nez Perce NHP
39063 US Hwy 95
Spalding, ID 83540-6086

Photography Credits

Nez Perce National Historical
Park - NPS

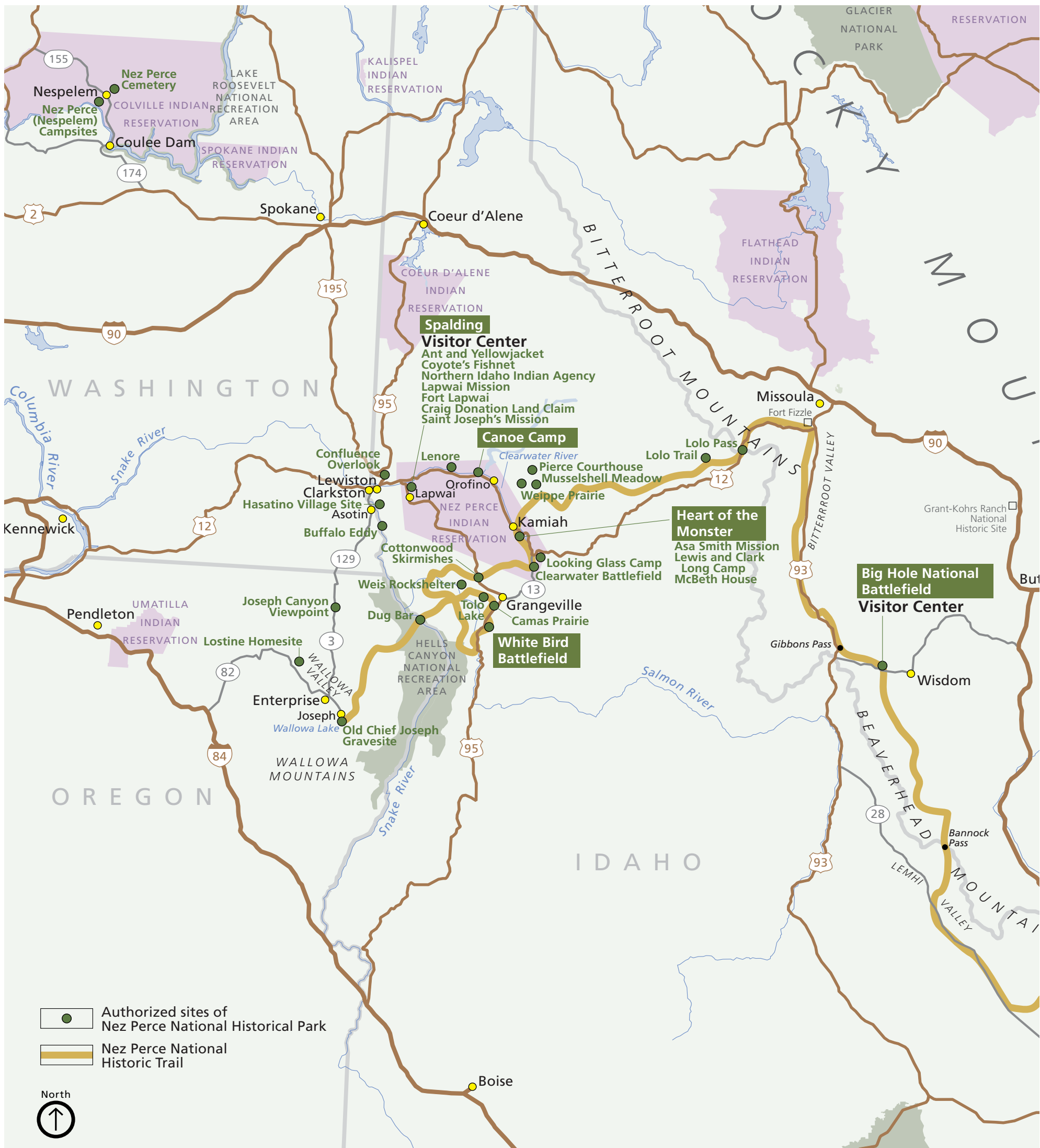
The *Visitor Guide* is published by Nez Perce National Historical Park and Big Hole National Battlefield in cooperation with the Northwest Interpretive Association and Glacier Natural History Association. Printed by American Color Printing, Shakopee, Minnesota.

Northwest Interpretive Association

164 S. Jackson St.
Seattle WA 98104-3627
(877) 874-6775

Glacier Natural Historical Association

P.O. Box 310
West Glacier, MT 59936-0310
(410) 888-5756



Idaho

Confluence Overlook

Donald MacKenzie established a trading post near the confluence of the Clearwater River in September 1812. The Nez Perce were not interested in the fur trade and MacKenzie sold out to the British.

Coyote's Fishnet

Coyote and Black Bear got into an argument. In frustration, Coyote threw his fishing net on a hill and tossed Black Bear on another, turning him into stone. Both features are visible today.

Ant and Yellowjacket

Ant and Yellowjacket were arguing over who had the right to fish for Salmon when they got into an argument. Coyote asked them to stop. They continued to fight, whereby Coyote turned them into a stone arch that is visible today.

Spalding

The Spalding site has seen many uses by the Nez Perce and was the location of Henry and Eliza Spalding's mission. The park's visitor center and museum is located here as well. Nearby is where the Spalding's first settled in 1836.

Northern Idaho Indian Agency

As part of the treaty process, the U.S. Government set up an agency to oversee the implementation of the terms of the treaties.

Fort Lapwai

In 1862, a detachment of volunteers chose this location for their fort. The 1883 officers' quarters at the southwest end of the parade ground is one of the few original buildings to have survived.

Craig Donation Land Claim

This is the site of the claim by the first Euro-American settler in Idaho. William Craig was a mountain man, an interpreter, and friend of the Nez Perce.

St. Joseph's Mission

This was the first Roman Catholic mission among the Nez Perce. It was dedicated in Sept. 1874 by Father Joseph Cataldo, who had built it. *The church and grounds are currently closed.*

Cottonwood Skirmishes

Skirmishes with the U.S. Army and volunteers occurred near here on July 3 and 5, 1877.

Weis Rockshelter

More than 8,000 years ago humans first made this home and continuously inhabited the area until about 600 years ago.

Camas Prairie

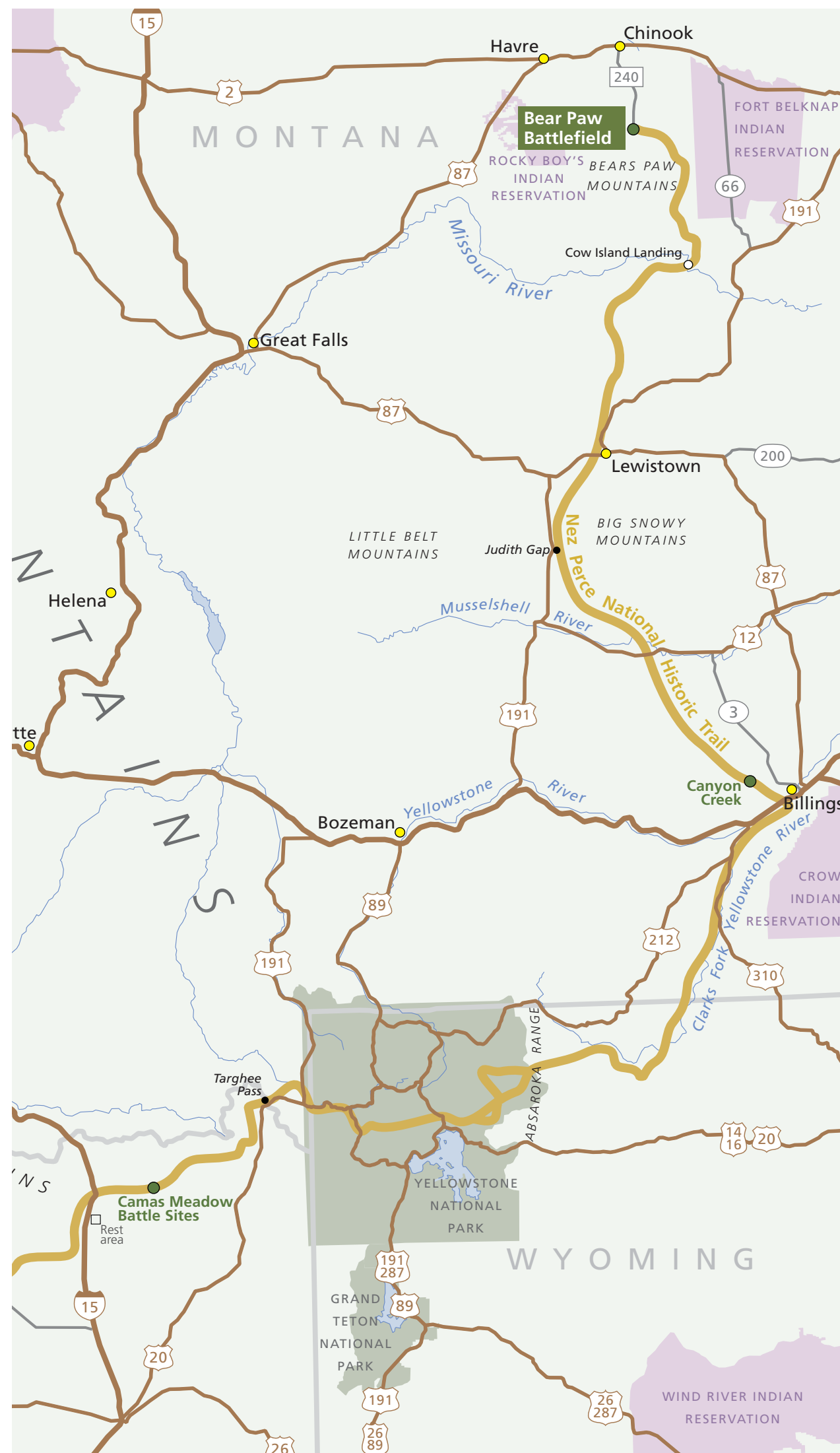
Where wheat fields stretch to the horizon today, camas once grew. Camas bulbs were a major food source for the Nez Perce. They gathered here in late summer and early fall to dig them.

Tolo Lake

In 1877, the non-treaty bands congregated at this ancient council site, known as Tephalewam, before moving onto the reservation. Frustrated by injustices against the Nez Perce, three Nez Perce warriors raided homesteads on the Salmon River from this site.

White Bird Battlefield

On June 17, 1877, the first battle of the Nez Perce War was fought here. The U.S. cavalry was defeated with heavy losses and the Nez Perce began their long journey to find safety and sanctuary. A self-guided walking tour of the battlefield is available at the trailhead.



Montana

Big Hole National Battlefield

On the morning of August 9, 1877, U.S. troops surprised the Nez Perce who crossed the Bitterroots trying to evade capture. Between 60 and 90 Nez Perce men, women, and children were killed. The Army lost 29 soldiers and 40 wounded.

Canyon Creek

After emerging from Yellowstone National Park, the Nez Perce were pursued by the cavalry. In a rearguard action the Nez Perce were able to gain time by successfully stopping the pursuing troops.

Bear Paw Battlefield

Just 40 miles short of the Canadian border, the Nez Perce were besieged by the Army. With losses mounting, Joseph gave his rifle to General Howard, ending the siege on October 5, 1877. They had traveled 1,170 miles in the nearly four months since the first skirmishes.

Oregon

Dug Bar

At this traditional crossing of the Snake River, Joseph and his band crossed in May, 1877 as they left their homes in Oregon for the reservation in Idaho. Located in Hell's Canyon National Recreation Area, the site is accessible by either boat or a high clearance vehicle.

Joseph Canyon Viewpoint

The canyon seen from the overlook was one of the winter homes of the Nez Perce. Tradition holds that Chief Joseph was born in a cave along the east bank of the creek. Restrooms are available.

Old Chief Joseph's Gravesite

The remains of the elder Chief Joseph were reburied here in 1926. Nearby are the graves of other Nez Perce and some settlers.

Lostine Campsite

At the junction of the Lostine and Wallowa Rivers is a traditional Nez Perce summer campsite where Old Chief Joseph died in 1871. This landscape has changed little from the days before the area was settled. **Not a developed site.**

Washington

Burial Site of Chief Joseph the Younger

In 1885 Chief Joseph and his band were allowed to return to the Northwest from Indian Territory in Oklahoma. Joseph spent his remaining years on the Colville Reservation and died here in 1904. **The cemetery is private property and a sacred place.**

Nez Perce Campsites at Nespelem

Chief Joseph's band continued their traditional way of life while living on the Colville Reservation. These were their winter and summer homes and were the last places where Joseph lived. **Not a developed site.**

Nez Perce (Nee-Me-Poo) National Historic Trail



In 1986, Congress established the Nez Perce (Nee-Me-Poo) National Historic Trail to commemorate the 1877 War. The trail begins at Wallowa Lake in Oregon and extends 1,170 miles to the Bear Paw Battlefield in Montana. The trail is managed by the U.S. Forest Service in cooperation with other partners, including the National Park Service. Further information on sites to see and special events along the trail can be found on the web at: www.fs.fed.us/npnht/.

Clearwater Battlefield

On July 11, 1877 Gen. Oliver O. Howard crossed the Clearwater River and hoped to take the Nez Perce by surprise. His hopes came to naught and the fighting ended with the Nez Perce withdrawing.

Heart of the Monster

This is the location of the Heart of the Monster, where Coyote defeated a monster and, in turn, created the Nez Perce people. Audio stations tell the story in English and in the Nez Perce languages.

Asa Smith Mission

In April 1839, Rev. and Mrs. Asa Smith established a mission in the Kamiah area. Unsited to the demands of such work, the Smiths left in 1841.

Lewis and Clark Long Camp

Near here Lewis and Clark camped in the spring of 1806 for nearly a month.

Canoe Camp

In the early fall of 1805, the Lewis and Clark expedition rested here and built canoes of hollowed-out logs for the final leg of their trip to the Pacific Ocean.

Lenore

For thousands of years, this village site was used by the Nez Perce and their ancestors.

Weippe Prairie

This was a root-gathering place for the Nez Perce and it was here on September 20, 1805, that Lewis and Clark first met the Nez Perce. During the 1877 War, the Nez Perce came here after the Battle of the Clearwater.

Pierce

In September 1860, gold was found on the Nez Perce reservation, triggering another treaty that reduced the size of the reservation. The other site of interest is the old Shoshone County courthouse, completed in 1862 and the oldest public building in Idaho.

Musselshell Meadow

For many generations, Nez Perce have come here to dig for camas. General Howard camped here at the end of July, 1877 while pursuing the Nez Perce over the Lolo Trail.

Lolo Pass and Trail

This historic Nez Perce trail was used by Lewis and Clark in 1805 and 1806. During the 1877 War the Nez Perce followed

the trail on into Montana. The U.S. Forest Service maintains a visitor center at Lolo Pass.

Looking Glass' 1877 Campsite

The Looking Glass Band tried to remain neutral in the conflict between the non-treaty Nez Perce. The Army attacked the village. Looking Glass regarded this as treachery and joined the others against the Army.

Buffalo Eddy

The unique petroglyphs of this area are evidence of the longevity of the Nez Perce occupation of the area. Defacing federal archeological sites is a criminal offense.

Hasotino

Hasotino was a site used until the end of the 19th century and was located near an important eel fishery.

Camas Meadow Battle Site

After the tragedy at Big Hole, the Nez Perce gained time by stealing more than 200 of the Army's pack mules and horses, halting their advance.