

R8E

R9E

R10E



T 22 N

Plumas National Forest  
Feather River Ranger District  
Sugarberry Roads Treatment, Aquatic and  
Riparian Ecosystem Restoration Projects  
Map 1 of 2

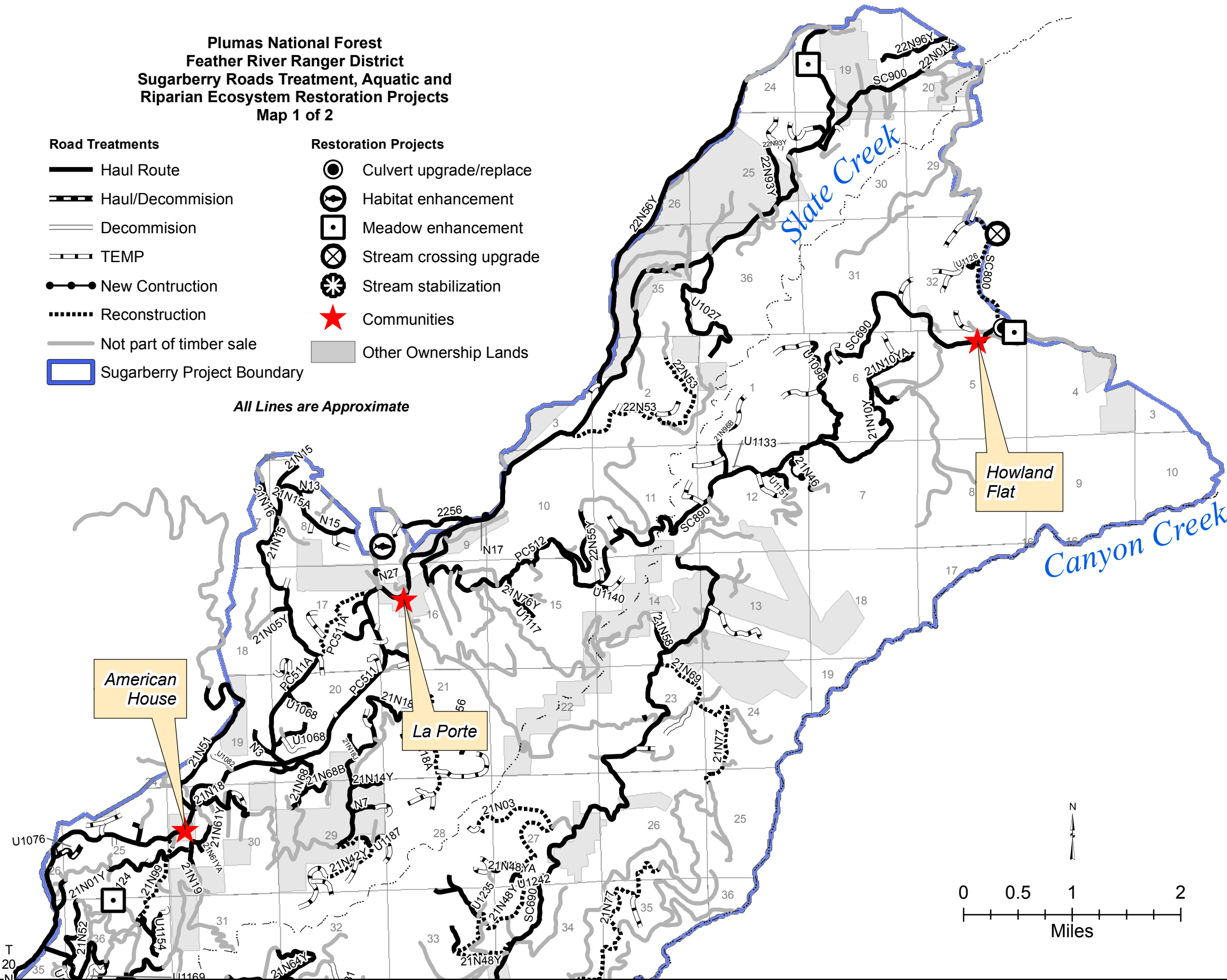
Road Treatments

- Haul Route
- Haul/Decommision
- Decommision
- TEMP
- New Construction
- Reconstruction
- Not part of timber sale
- Sugarberry Project Boundary

Restoration Projects

- Culvert upgrade/replace
- Habitat enhancement
- Meadow enhancement
- Stream crossing upgrade
- Stream stabilization
- Communities
- Other Ownership Lands

All Lines are Approximate



T 21 N

T 20 N

