

Management Area Direction

A Management Area is a contiguous unit of land with varying physical and biologic character and management needs. Those 43 such areas defined on the Forest for purposes of this Plan are groups of the pre-existing timber compartments (TC's). Thus, they are administrative, rather than natural, units of land.

Management direction for each Management Area includes:

Management Area Map. Shows the area boundary and spatial relation to the entire Forest, general geographic features, public vs. private land, the road system, and developed recreation sites.

Description. Discusses location, size, prominent features, terrain, watershed, erodibility and slope stability, vegetation, wildlife, fire history, cultural resources, recreational use, range and timber production, mining and other uses. (Note: total area acreages given are those within the Forest boundary only.)

Standards and Guidelines. States management direction unique to each management area. This guidance (which includes application of particular prescriptions) is presented in the General Direction and Standard/Guideline format described earlier.

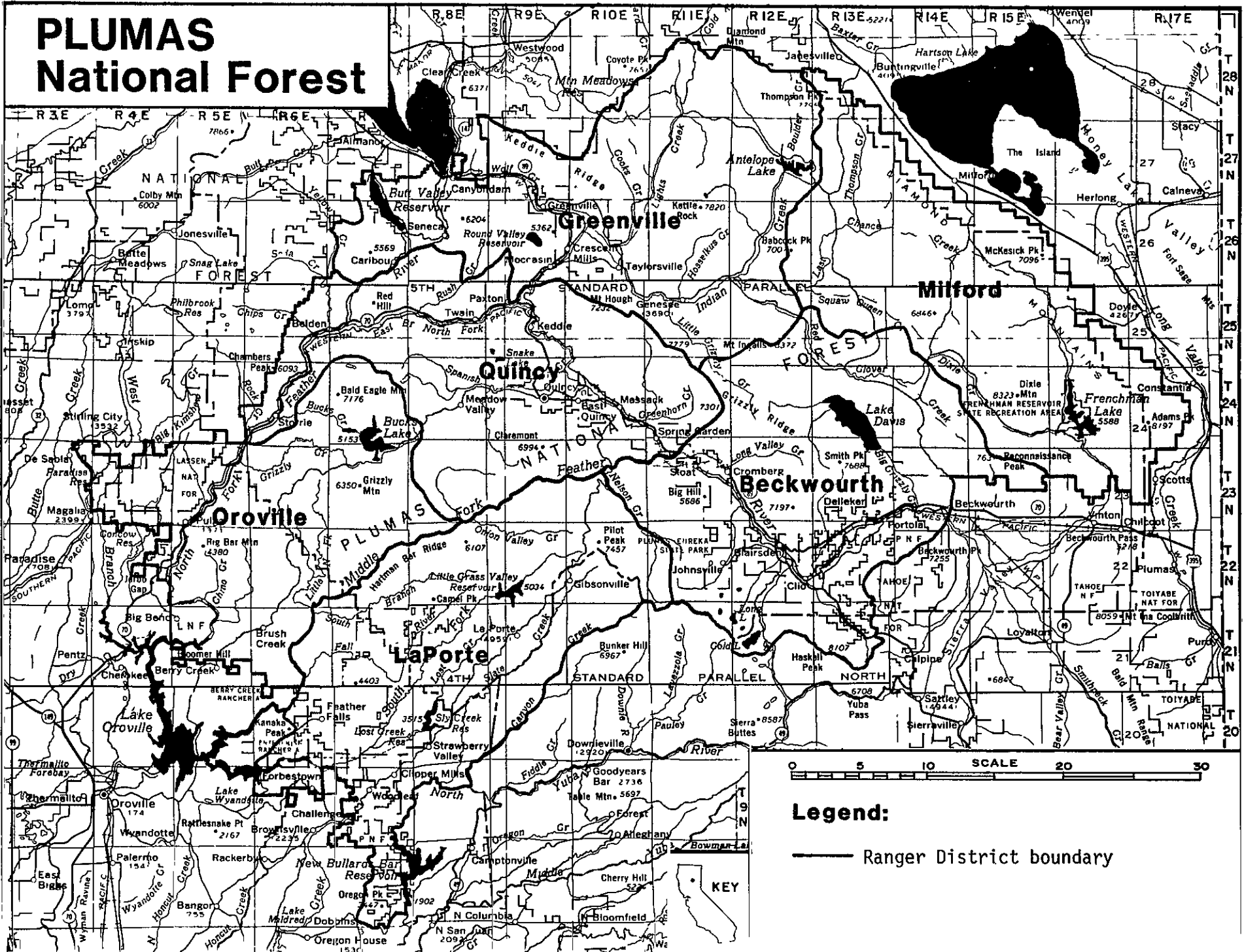
Prescription Allocations and Management Objectives. Presents the approximate planned acreage allocation of the area to the various prescriptions (refer to the preceding section for the substance of the prescriptions) and lists the target wildlife and range objectives for the particular area.

Each Management Area shall be managed in conformance with the Forest Goals and Policies and the direction that follows herein. Forestwide Standards and Guidelines are applicable wherever relevant, and provisions of prevailing prescriptions must also be satisfied.

Figure 4-1

PLUMAS National Forest

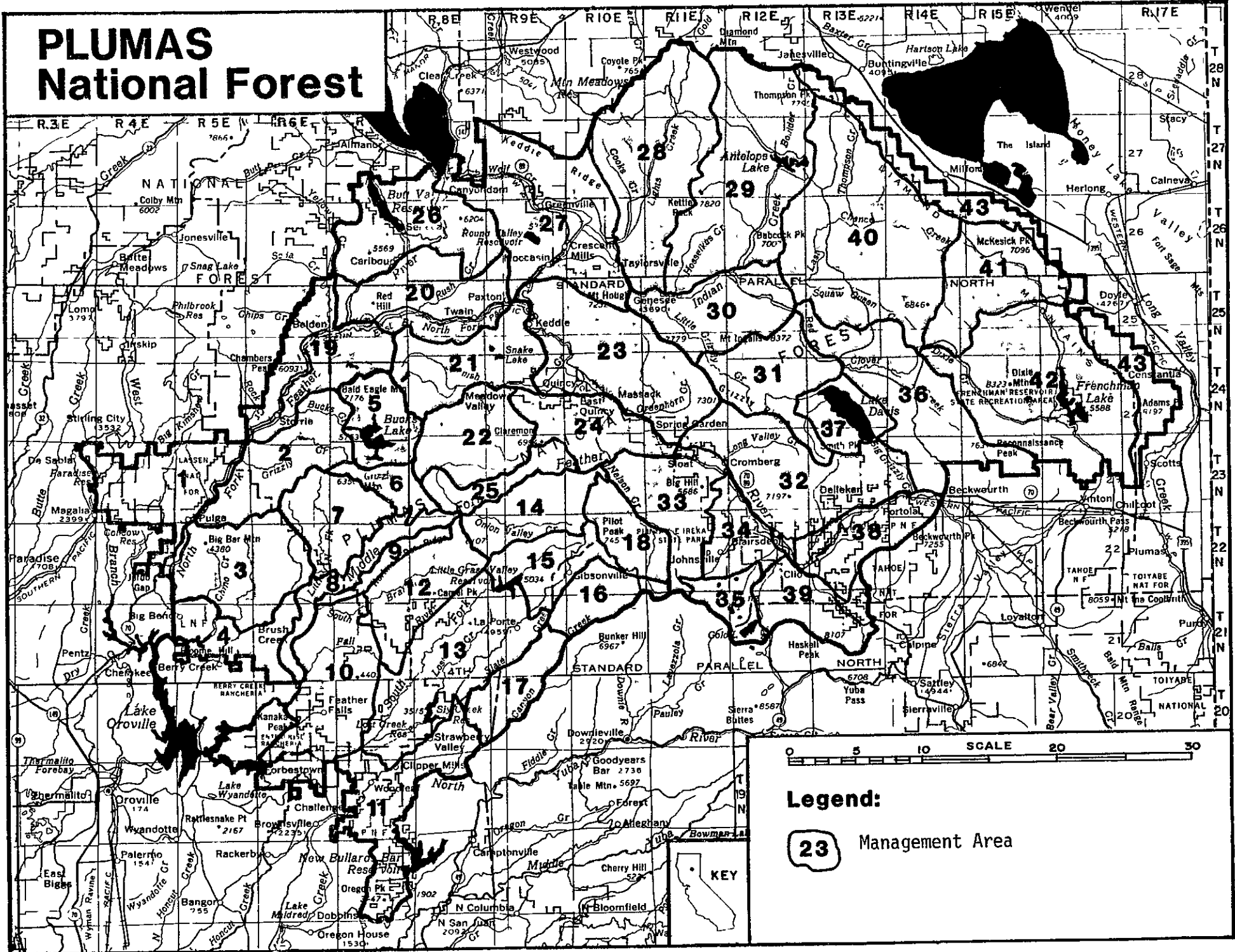
4-114



Legend:
 — Ranger District boundary

KEY

PLUMAS National Forest



4-115

Figure 4-2

