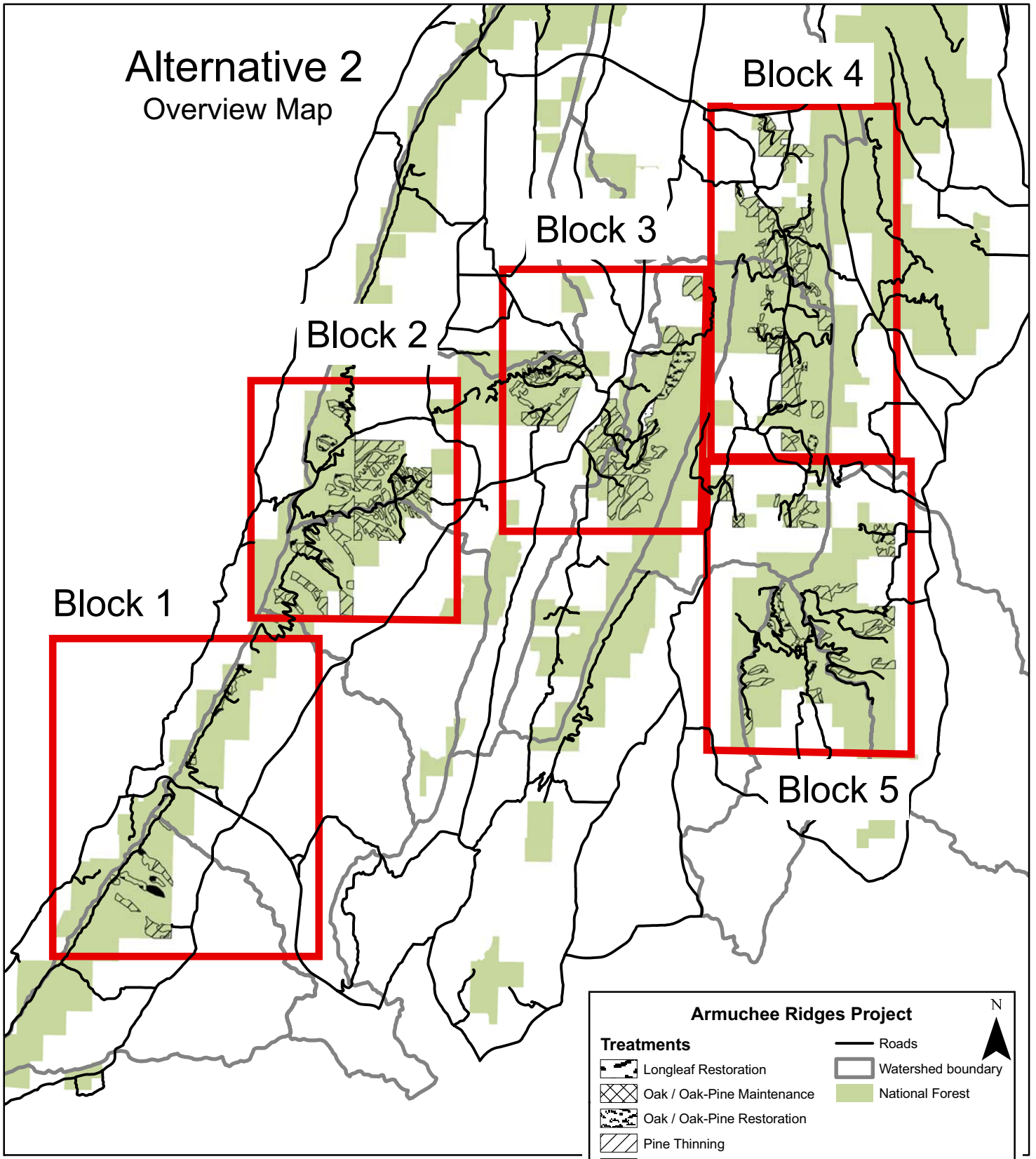


Alternative 2 Overview Map



0 4 Miles

Armuchee Ridges Project

Treatments

- Longleaf Restoration
- Oak / Oak-Pine Maintenance
- Oak / Oak-Pine Restoration
- Pine Thinning
- Riparian Hardwood Restoration
- Shortleaf Restoration

Roads
Watershed boundary
National Forest

MWM 9/18/2007

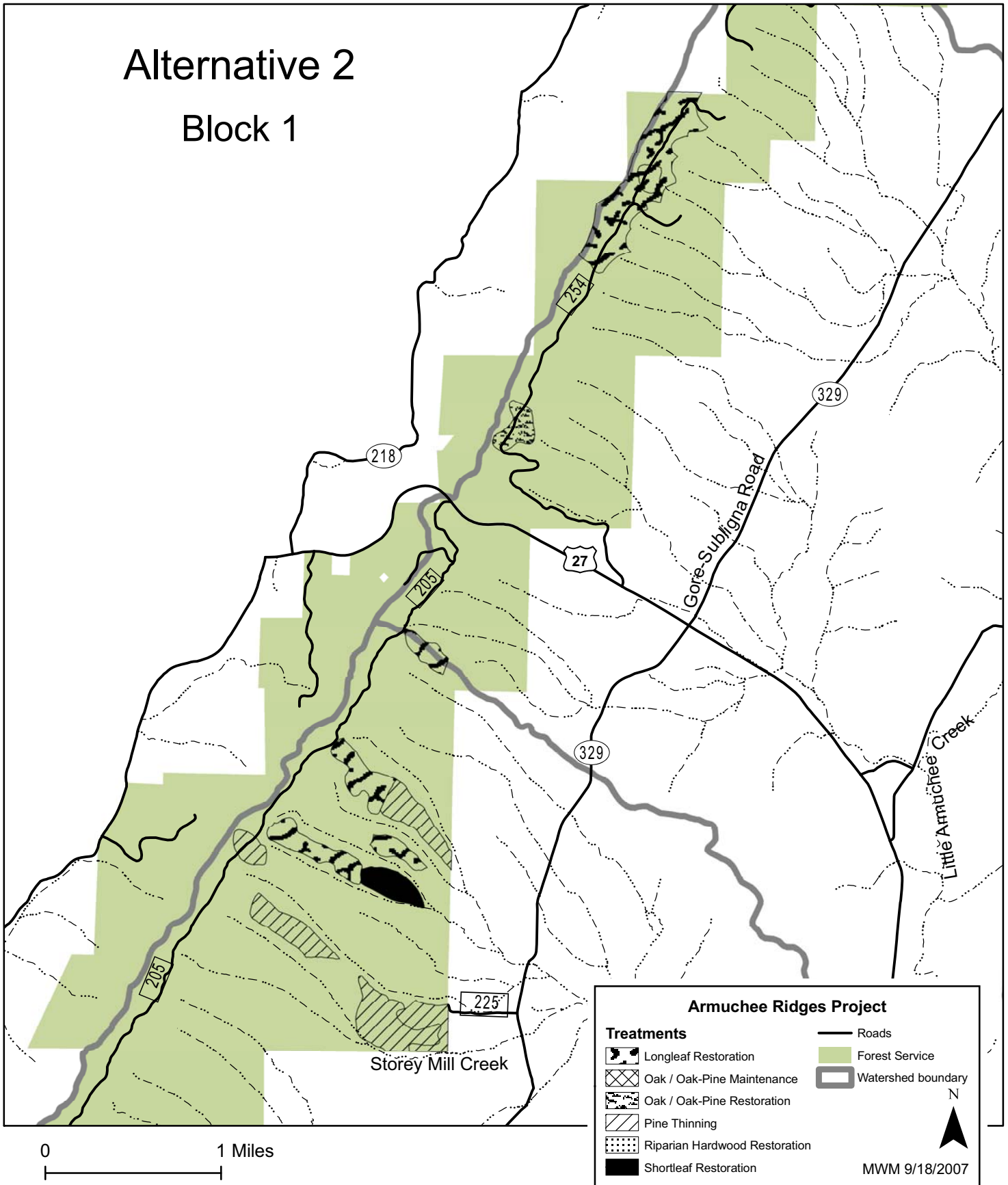
This map is reproduced from geospatial information prepared by the USDA Forest Service. GIS data and product accuracy may vary.



Chattahoochee National Forest
Conasauga Ranger District

Alternative 2

Block 1



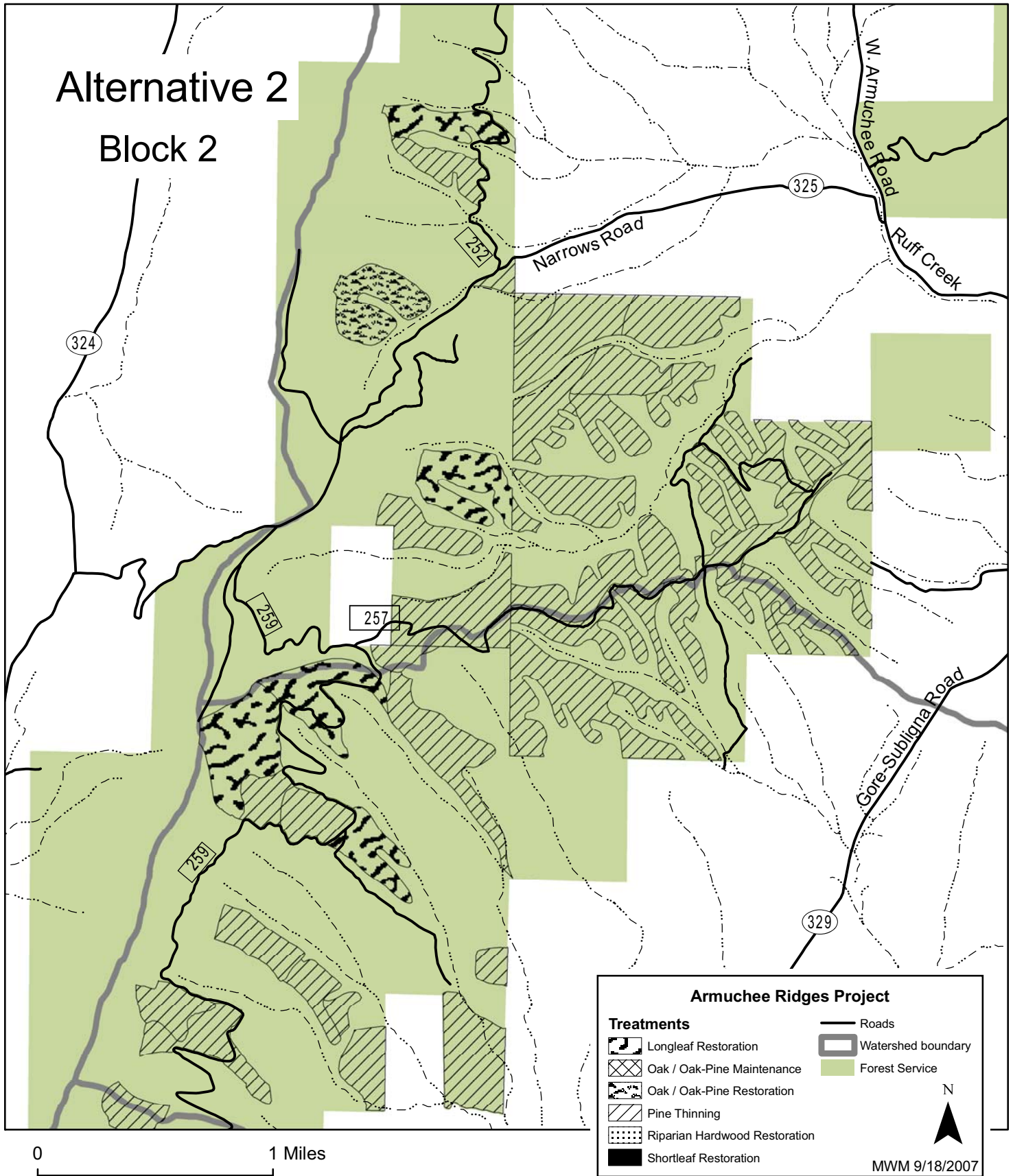
This map is reproduced from geospatial information prepared by the USDA Forest Service. GIS data and product accuracy may vary.



Chattahoochee National Forest
Conasauga Ranger District

Alternative 2

Block 2



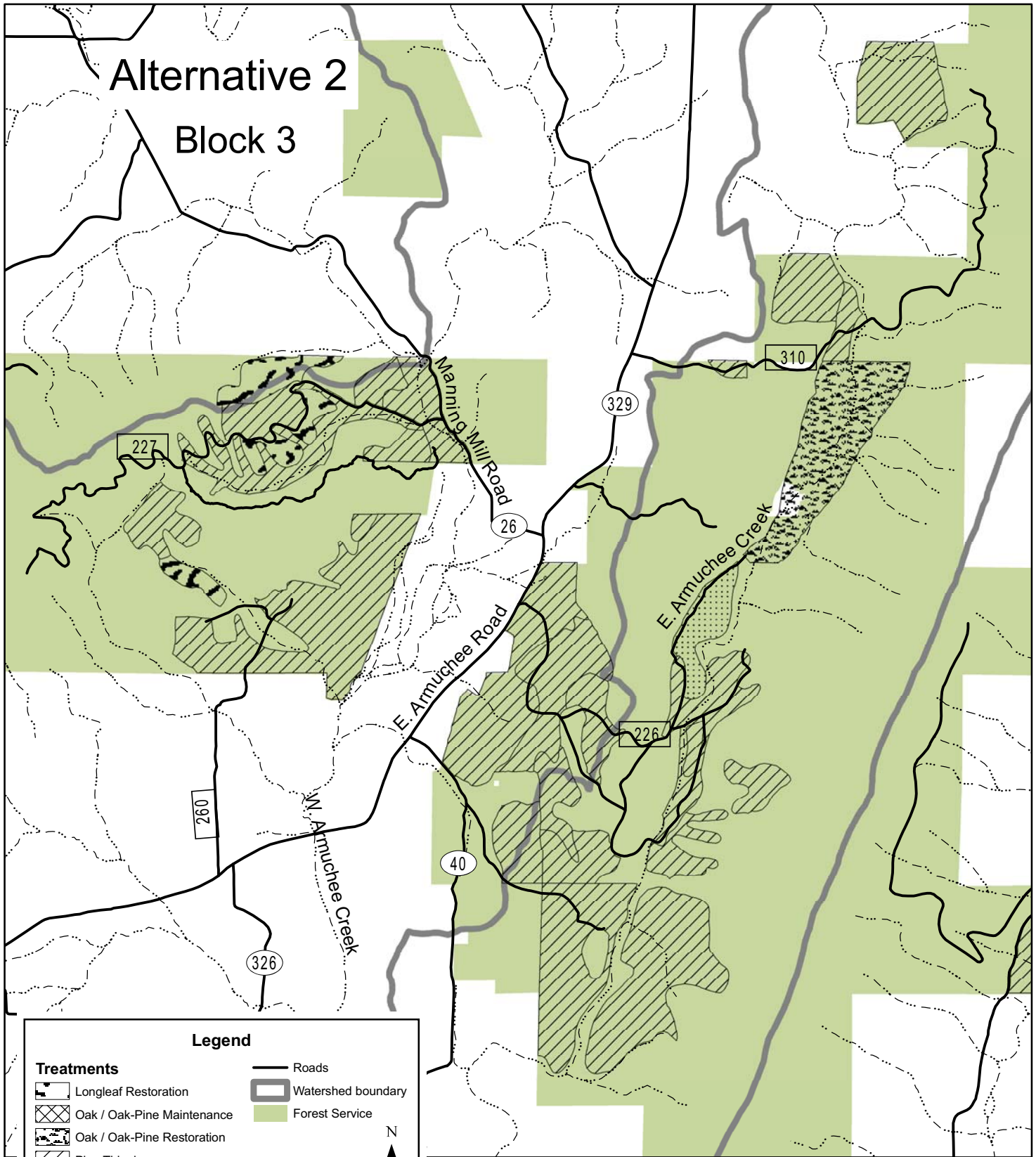
This map is reproduced from geospatial information prepared by the USDA Forest Service. GIS data and product accuracy may vary.



Chattahoochee National Forest
Conasauga Ranger District

Alternative 2

Block 3



Legend

Treatments

- Longleaf Restoration
- Oak / Oak-Pine Maintenance
- Oak / Oak-Pine Restoration
- Pine Thinning
- Riparian Hardwood Restoration
- Shortleaf Restoration

- Roads
- Watershed boundary
- Forest Service



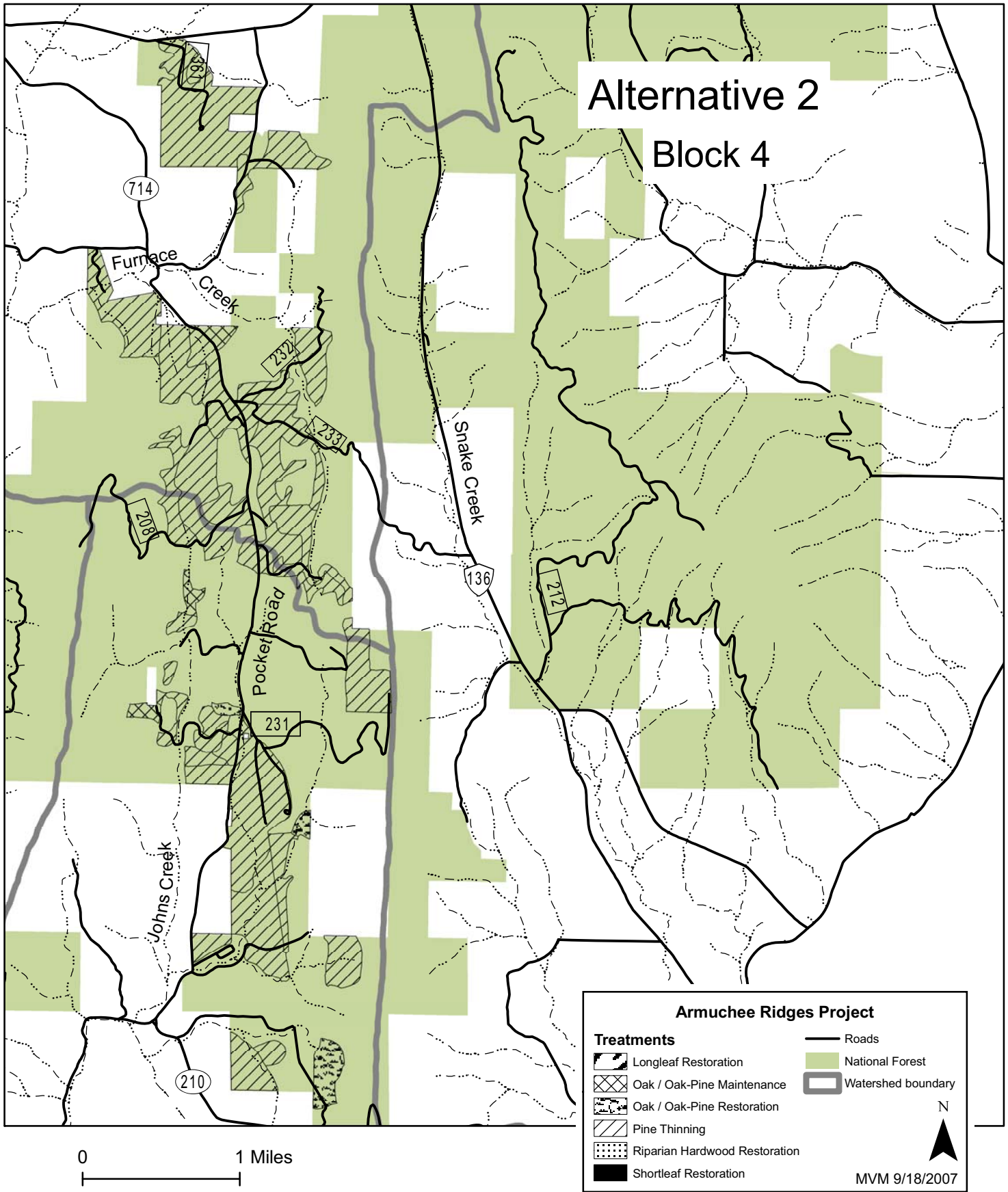
MWM 9/18/2007

0 1 Miles



Chattahoochee National Forest
Conasauga Ranger District

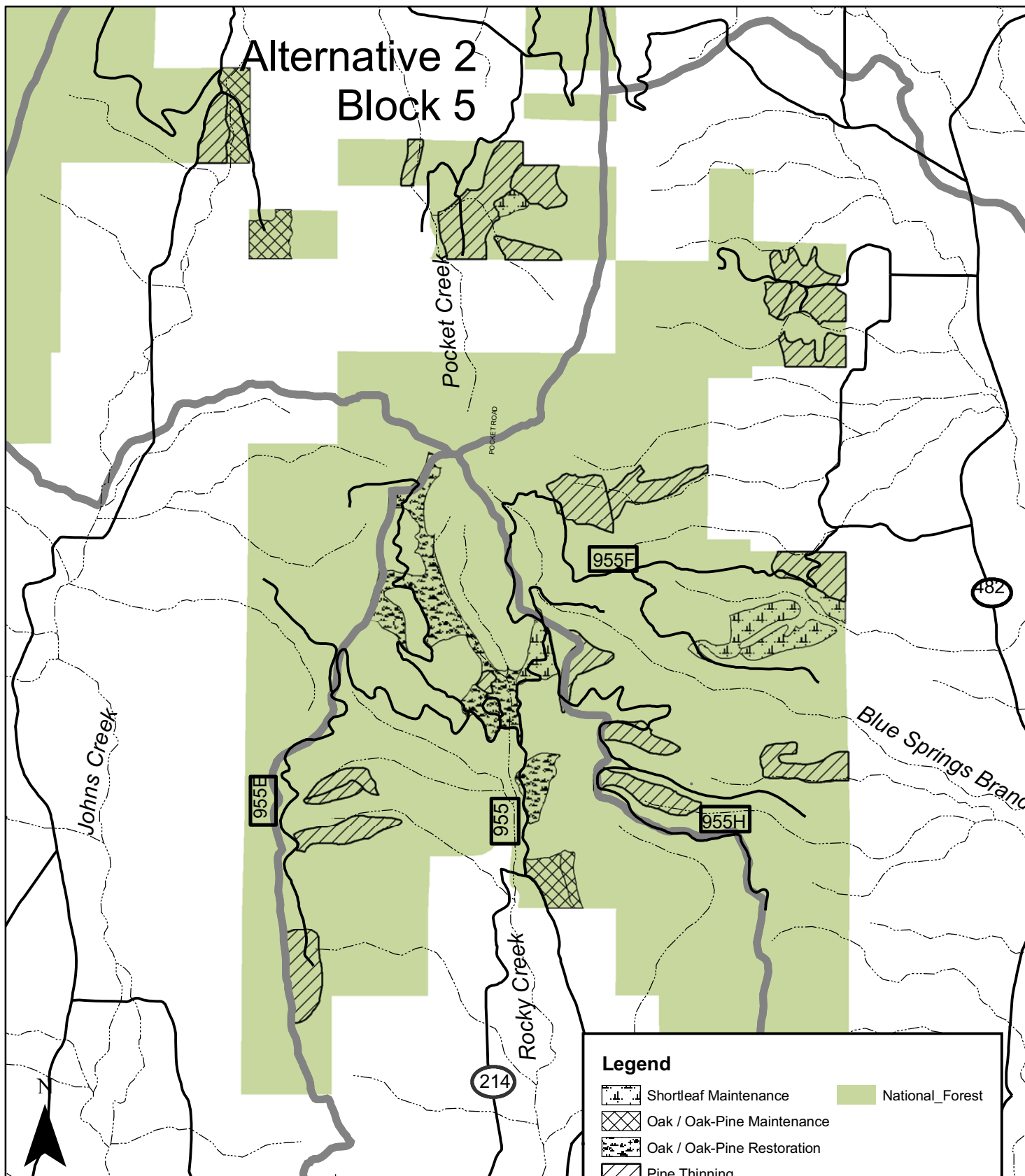
This map is reproduced from geospatial information prepared by the USDA Forest Service. GIS data and product accuracy may vary.



This map is reproduced from geospatial information prepared by the USDA Forest Service. GIS data and product accuracy may vary.



Chattahoochee National Forest
Conasauga Ranger District



Legend

	Shortleaf Maintenance		National_Forest
	Oak / Oak-Pine Maintenance		
	Oak / Oak-Pine Restoration		
	Pine Thinning		
	Longleaf Restoration		
	roads		

1 Miles

This map is reproduced from geospatial information prepared by the USDA Forest Service. GIS data and project accuracy may vary,



**Chattahoochee National Forest
Conasauga Ranger District**