

Feedback on NAM (Eta) to NAM (WRF-NMM)

Earl S. Barker AFWA/XPFT

On 15 June 2006, Earl S. Barker AFWA/XPFT wrote:

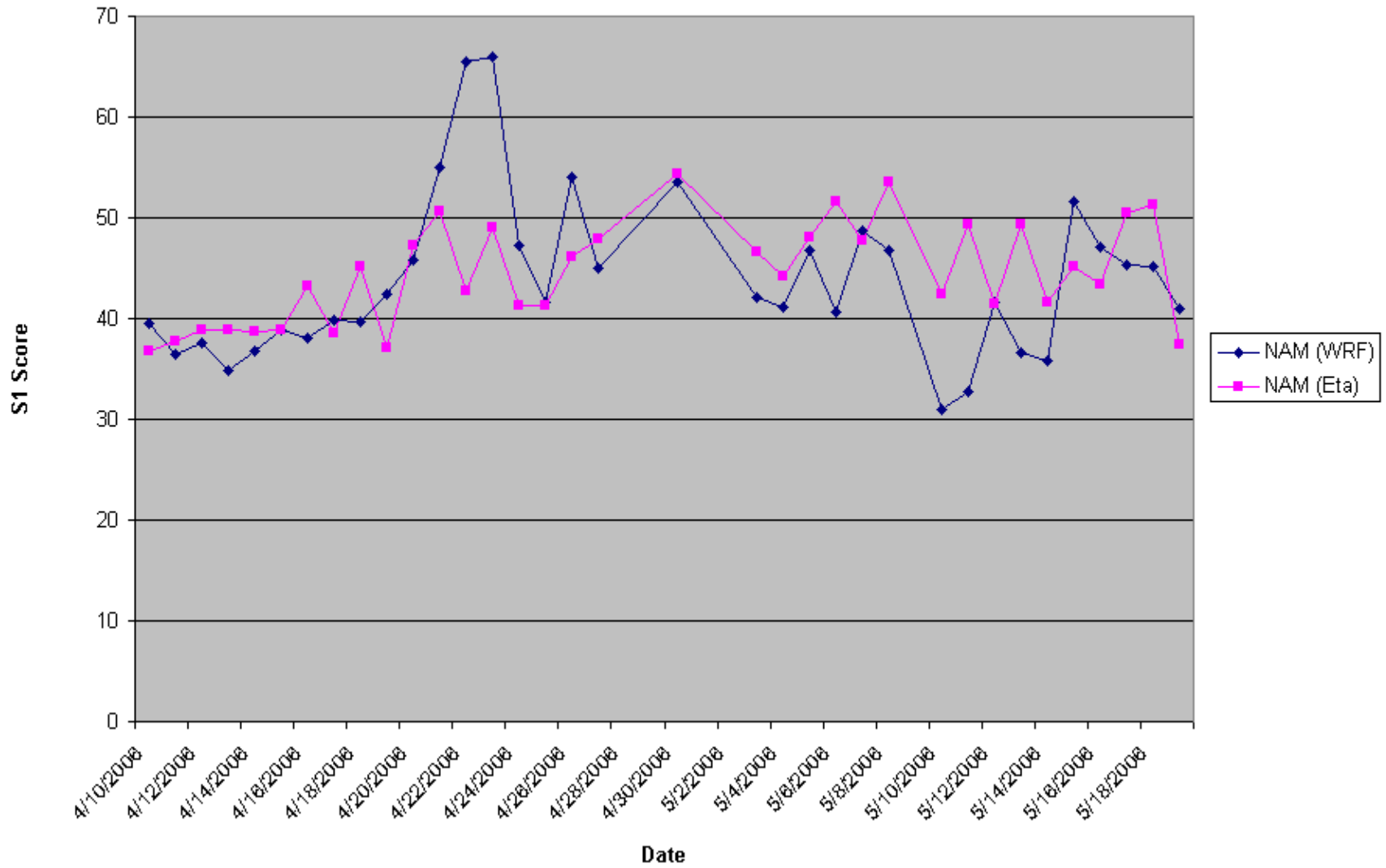
Geoff,

[AFWA's] OPSII is looking forward to the upcoming switch from NAM (Eta) to NAM (WRF-NMM). Thanks for making the parallel runs of NAM (WRF-NMM) available beforehand so that our forecasters could get an idea of what types of bias, etc to expect. I noticed that you had a PDF file (I think dated June 7th) on the feedback from the NWS and private industry. I thought I would forward some graphs showing the S1 Skill Score for the 500 mb GPH for a period from 10 April to 19 May 2006 (your team most likely created lots of statistical comparisons). Other than a few poor forecasts around the 23rd of April, NAM (WRF-NMM) did a better job than NAM (Eta), at least for this one statistical method for 500 mb GPH.

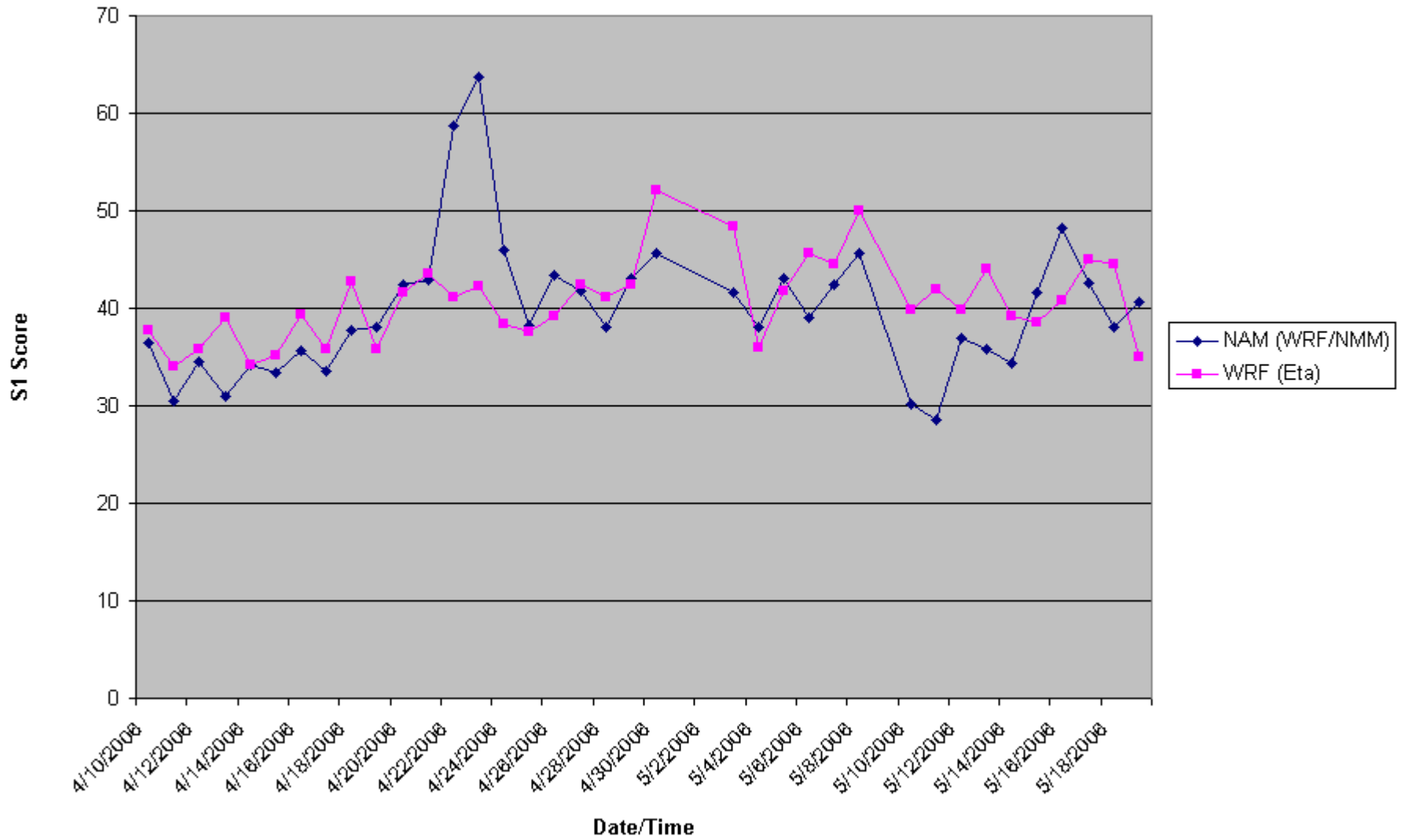
Thanks and good job!

Earl Barker

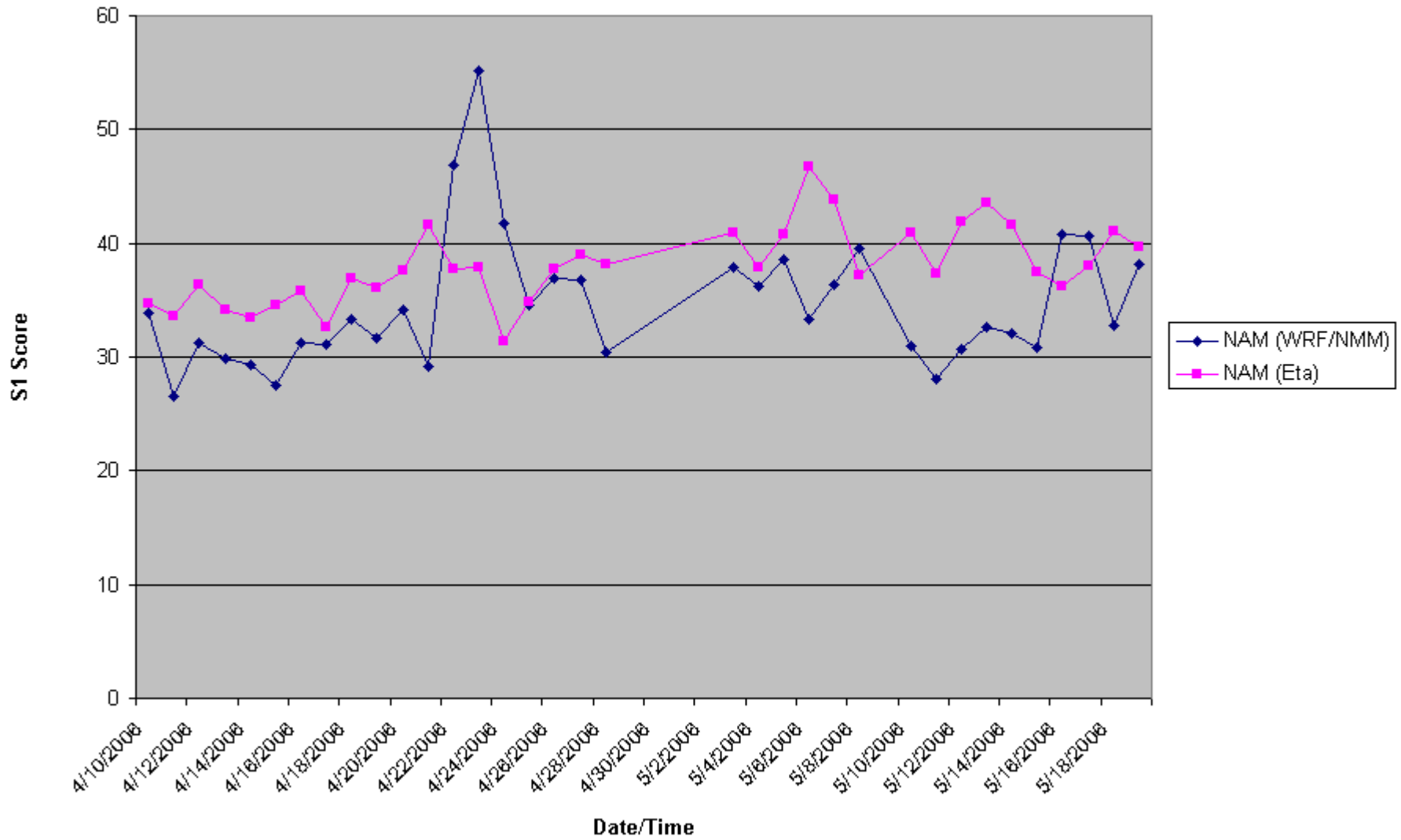
12Z 72hr NAM (WRF) vs NAM (Eta) 500mb GPH



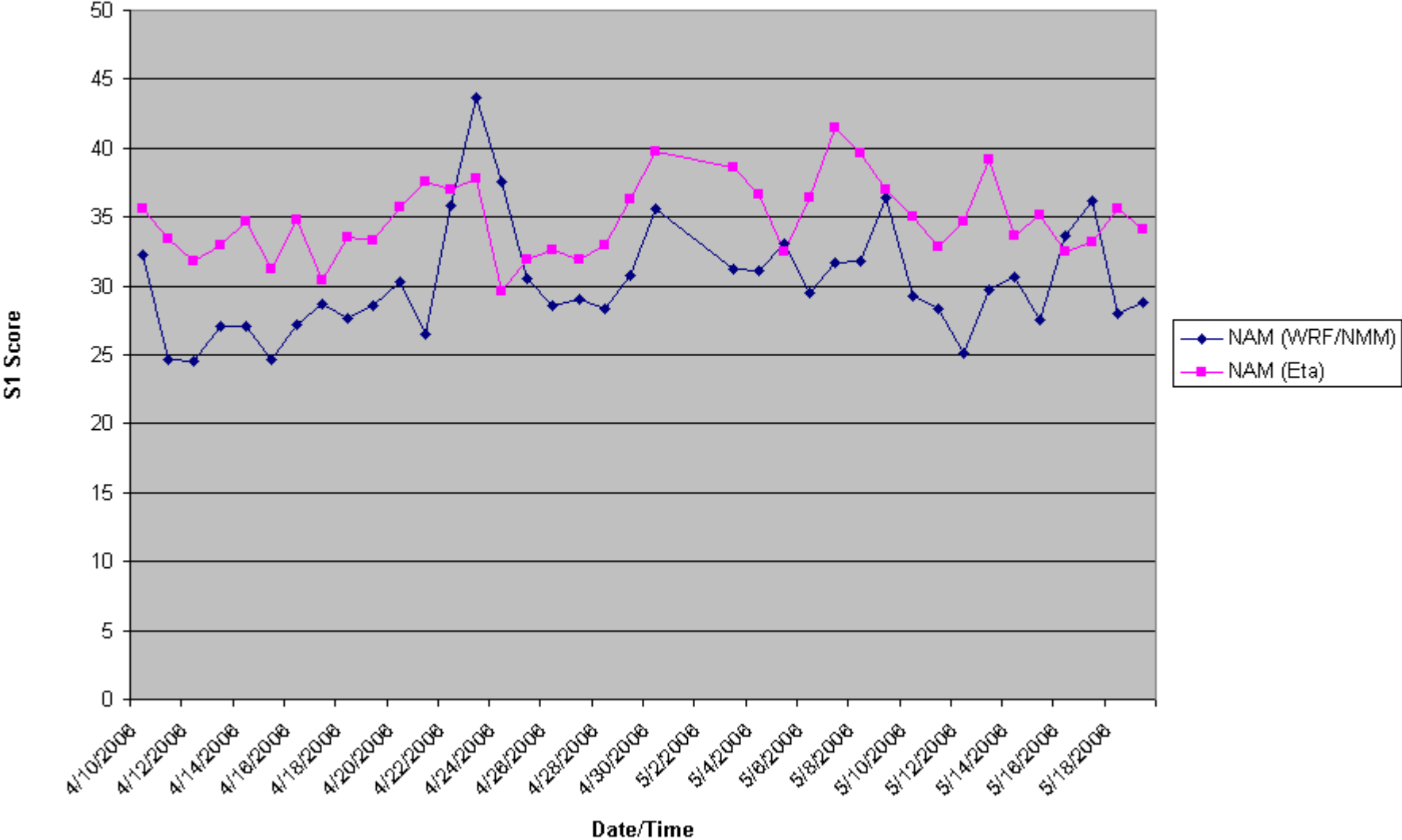
12Z 60hr NAM (WRF/NMM) vs NAM (Eta) 500mb GPH



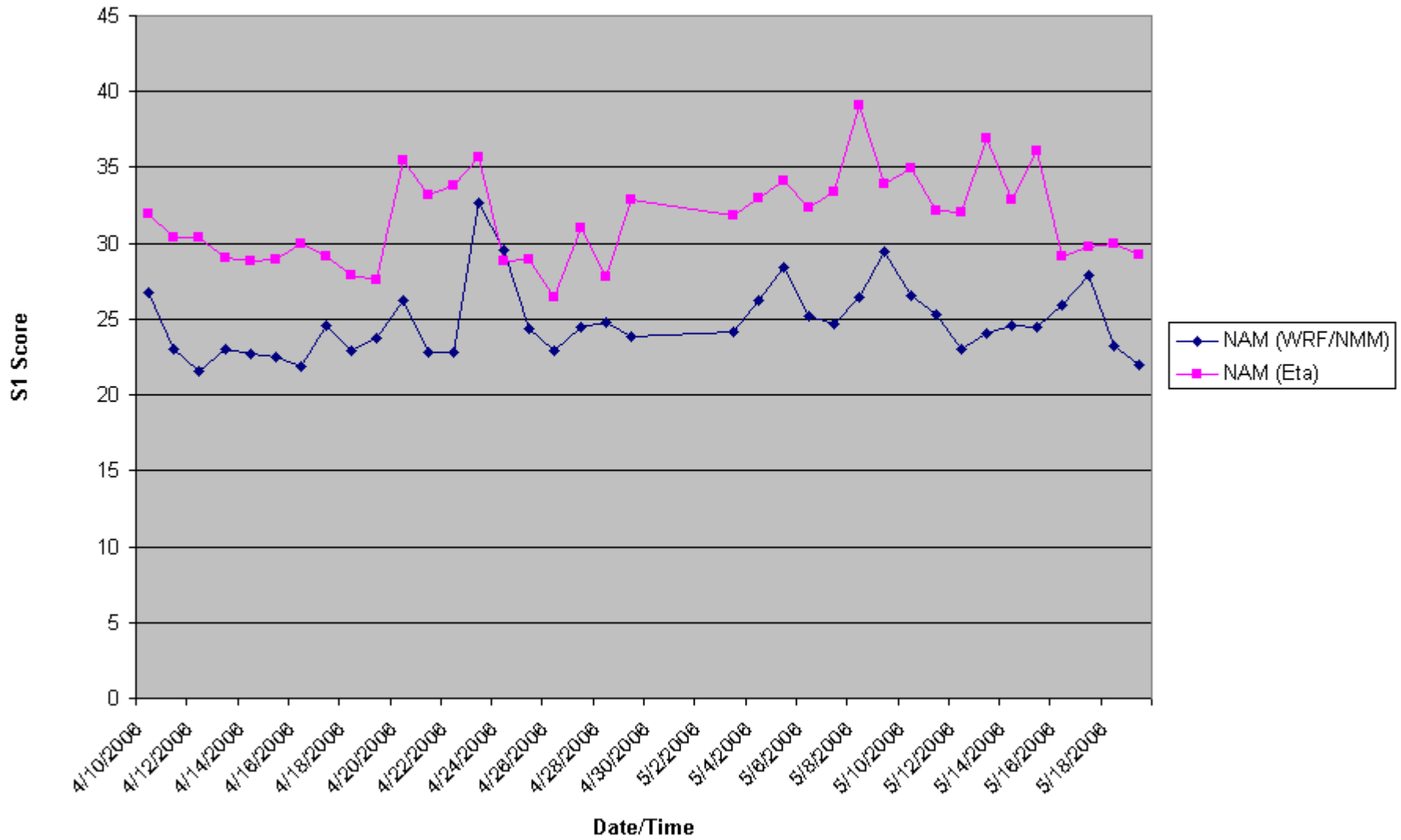
12Z 48hr NAM (WRF/NMM) vs NAM (Eta) 500mb GPH



12Z 36hr NAM (WRF/NMM) vs NAM (Eta) 500mb GPH



12Z 24hr NAM (WRF/NMM) vs NAM (Eta) 500mb GPH



12Z 12hr NAM (WRF/NMM) Vs NAM (Eta) 500mb GPH

