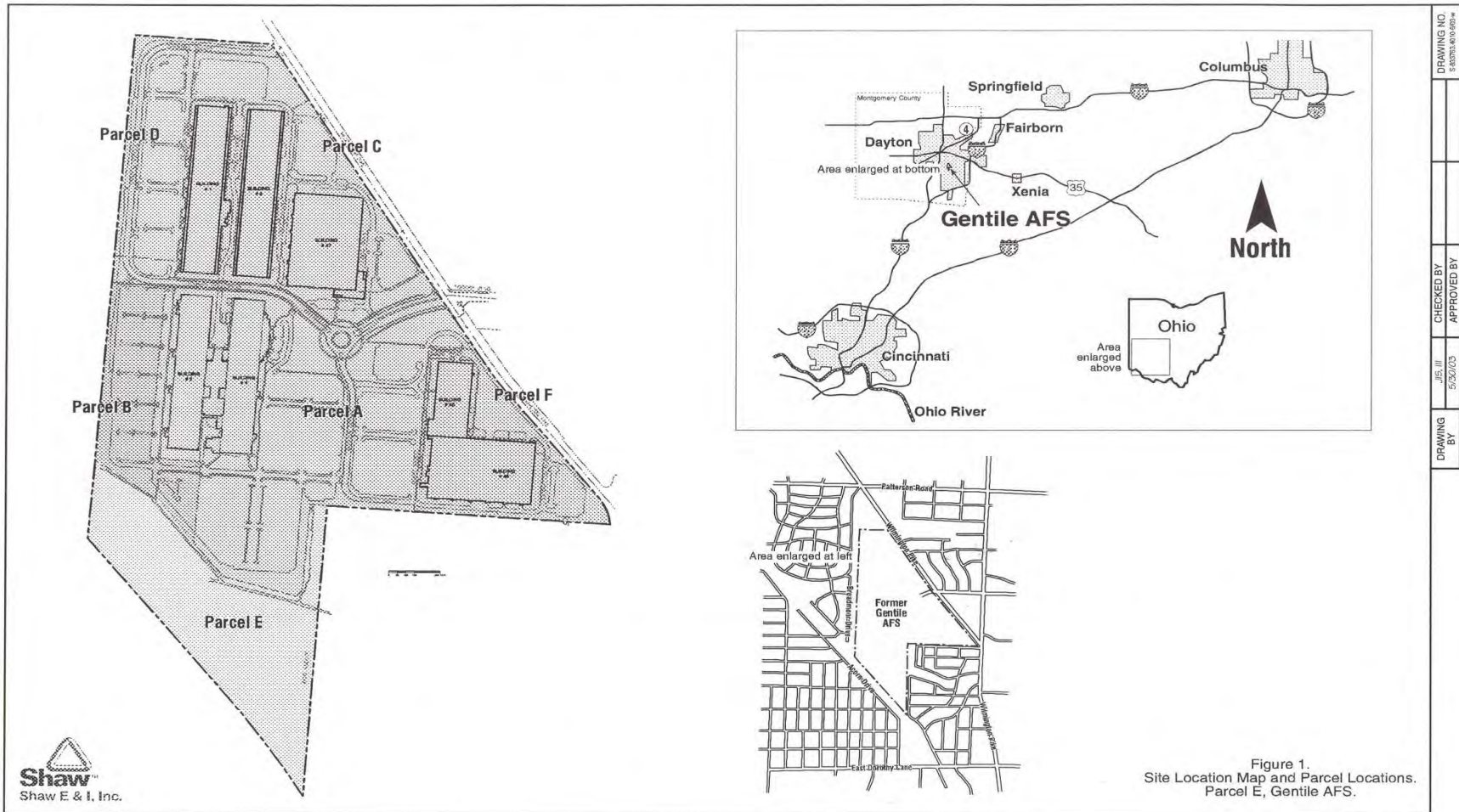


**Figures**

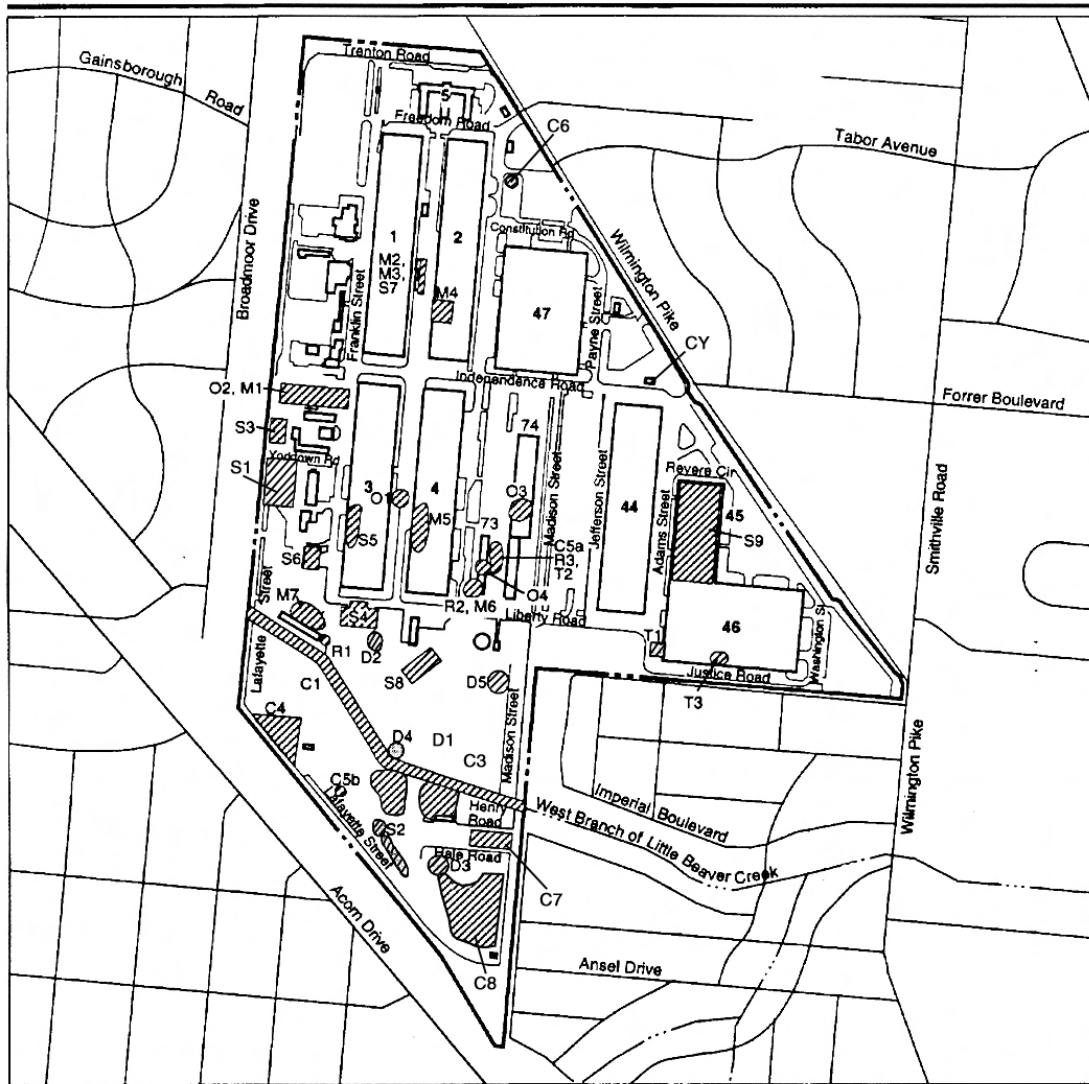
Figure 1. Area Map



DRAWING NO.	5-2004-0024
CHECKED BY	
APPROVED BY	
DRAWING BY	
DATE	5/26/03

Source: Ohio EPA 2004b.

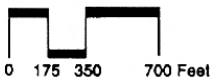
Figure 2. Site Map



**EXPLANATION**

--- Station Boundary

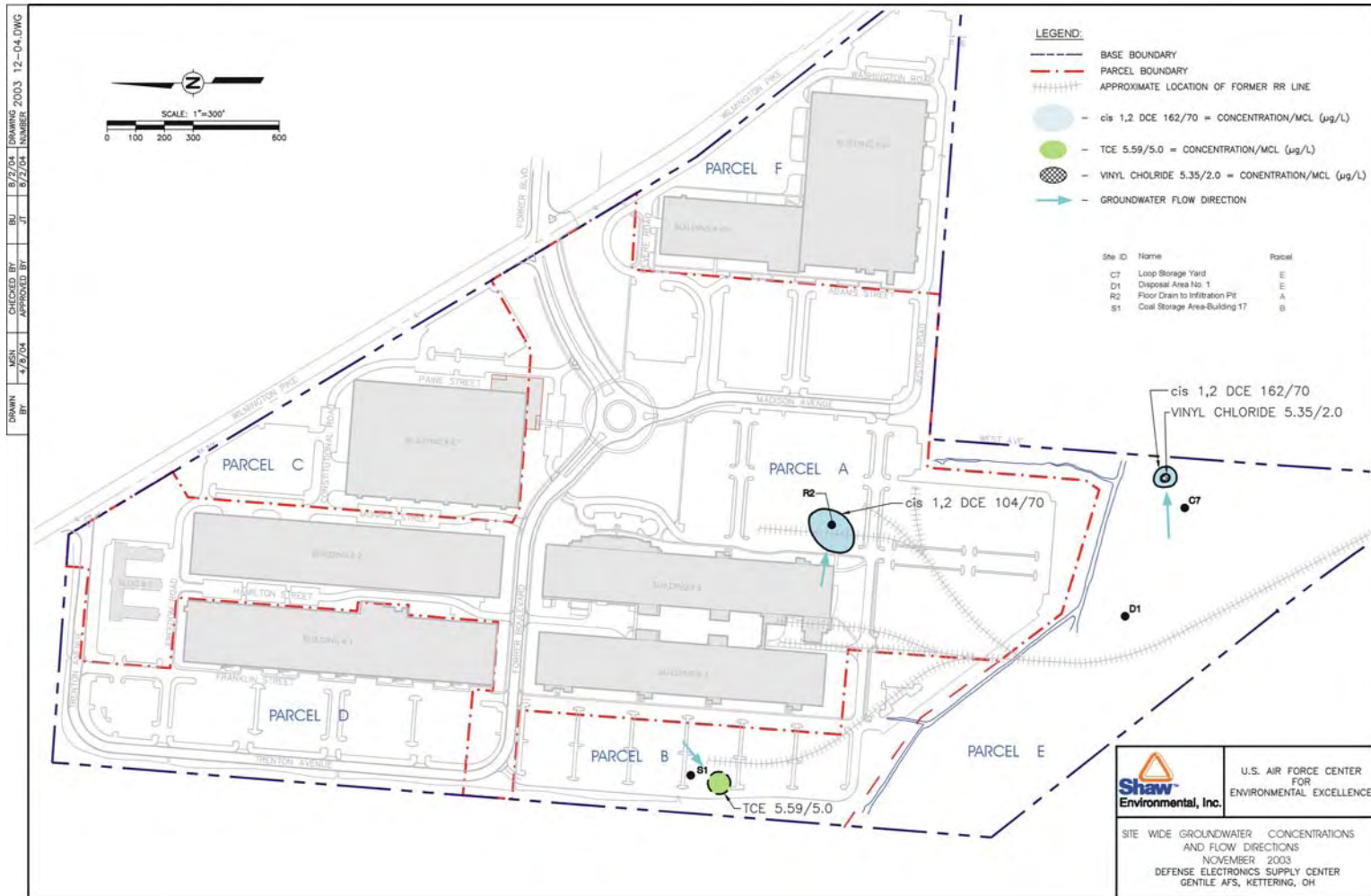
Installation Restoration Program Site



- |                                 |                                    |
|---------------------------------|------------------------------------|
| C1 The Creek                    | R1 Wash Rack Drain to Creek        |
| C2 Rail Lines                   | R2 Floor Drain to Infiltration Pit |
| C3 Small Arms                   | R3 Wash Rack                       |
| C4 Railroad Parcel              | O1 Paint Drain Line                |
| C5 Howitzer Spill Site          | O2 Oil/Water Separators            |
| C6 Water Tower                  | O3 Oil/Water Separator             |
| C7 Old Salvage yard             | O4 Oil/Water Separator             |
| C8 Southern Storage Yard        | S1 Coal Storage Area               |
| D1 Disposal Area                | S2 Reserve Coal Storage            |
| D2 Disposal Area No. 2          | S3 Pesticide Storage               |
| D3 Old Salvage Yard             | S4 Herbicide Storage               |
| D4 Electron Tubes Disposal Area | S5 PCB Storage Area                |
| D5 Electron Tubes Disposal Area | S6 Paint Storage Area              |
| M1 Hydraulic Lift in Motor Pool | S7 Chemical Storage                |
| M2 Transformer Failure Area     | S8 PCB Storage Area                |
| M3 Waste Oil Feed Area          | S9 Instrument Calibration Area     |
| M4 Compressor Room              | T1 Hydrofluoric Acid Catch Basin   |
| M5 Stains in Shop Area          | T2 Acid Neutralizing Tank          |
| M6 Floor Stains                 | T3 Acid Neutralizing Sump          |
| M7 Base CE Storage              | CY Commander's Yard                |

Source: Earth Tech 1996.

Figure 3. Groundwater Plumes at Gentile AFS



Source: Provided by AFRPA August 2004.