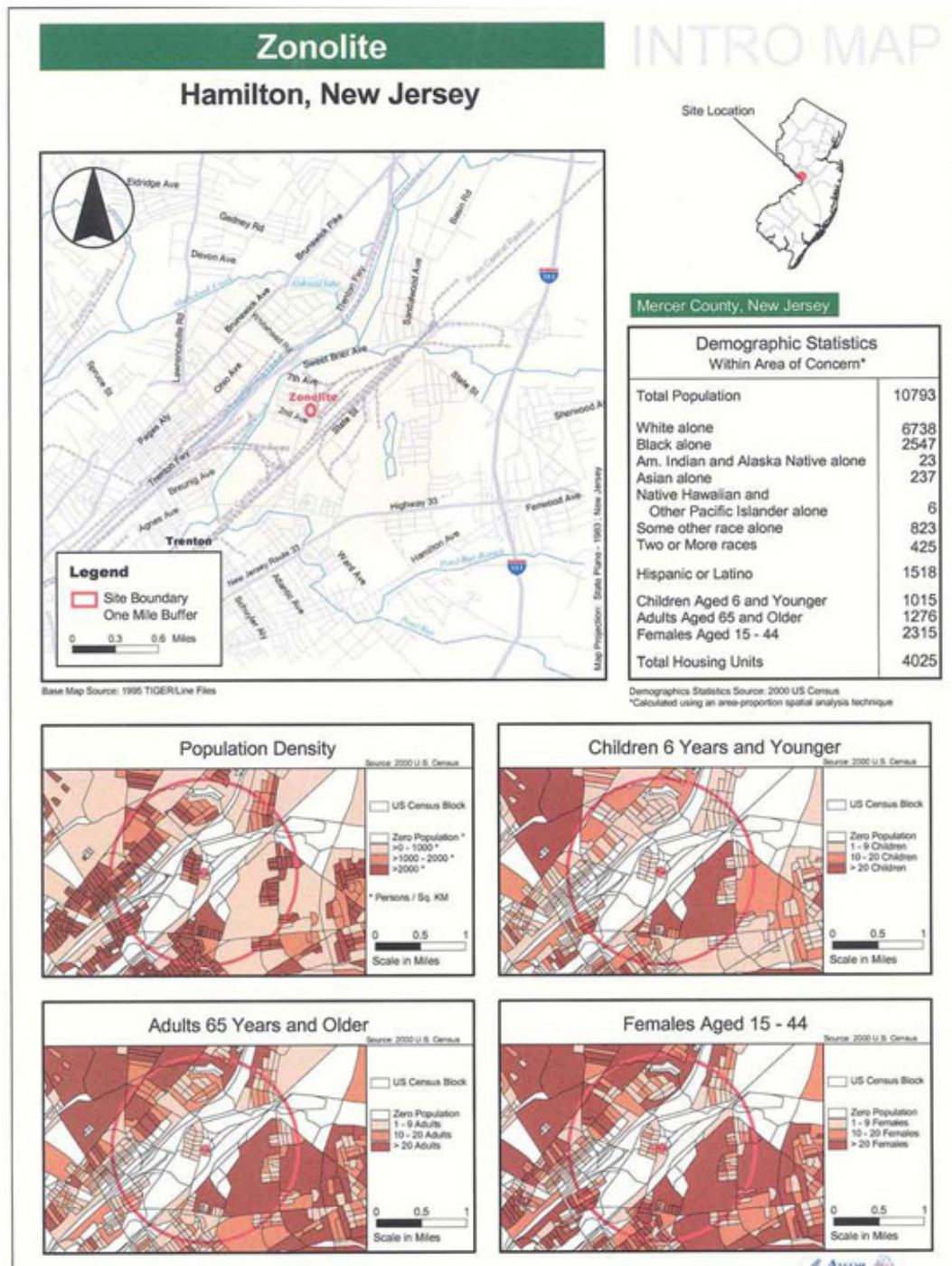
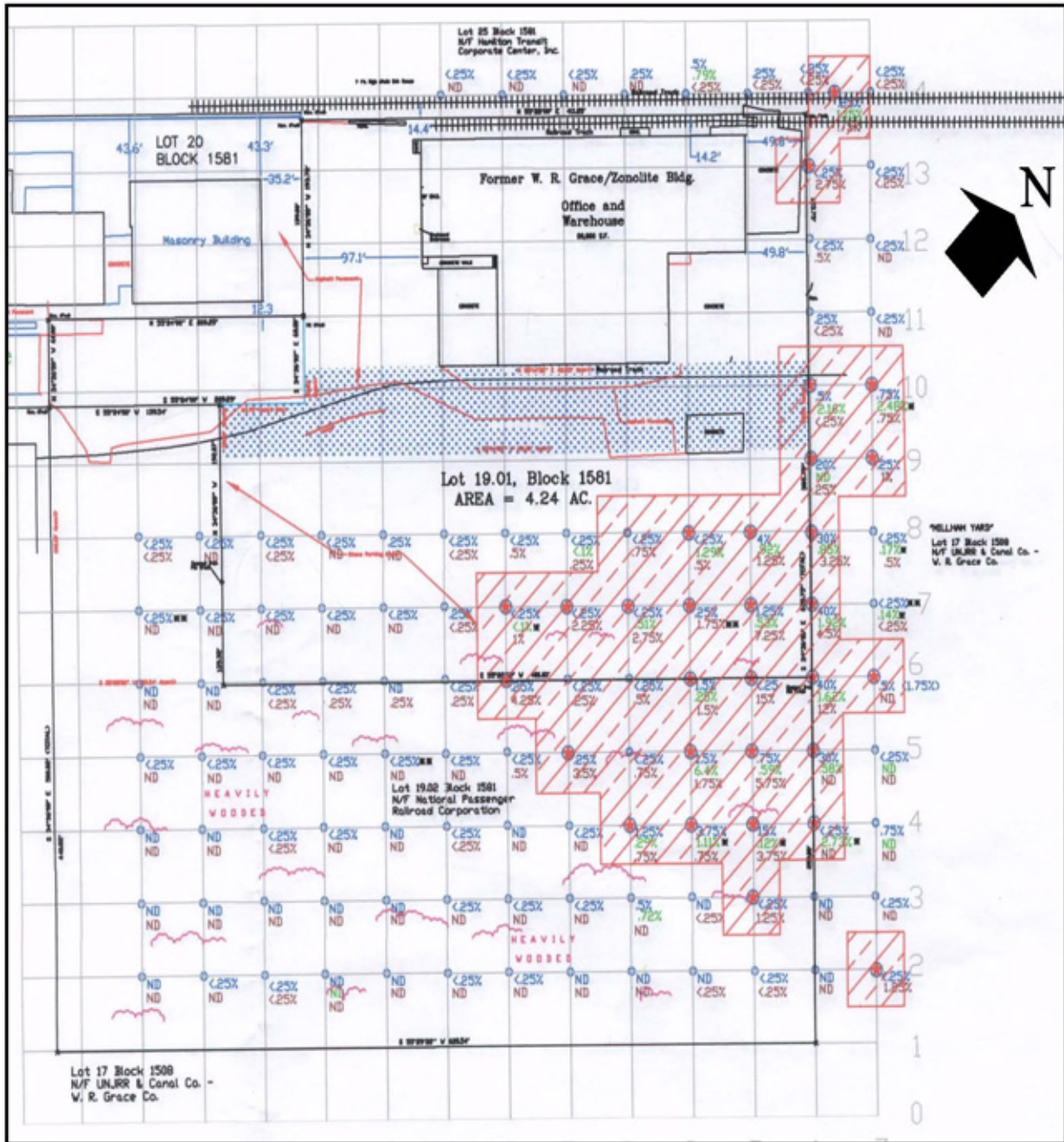


**Figures 2 - 5**



**Figure 2.** Demographic statistics within area of concern at the Zonolite site based on 2000 U.S. Census data



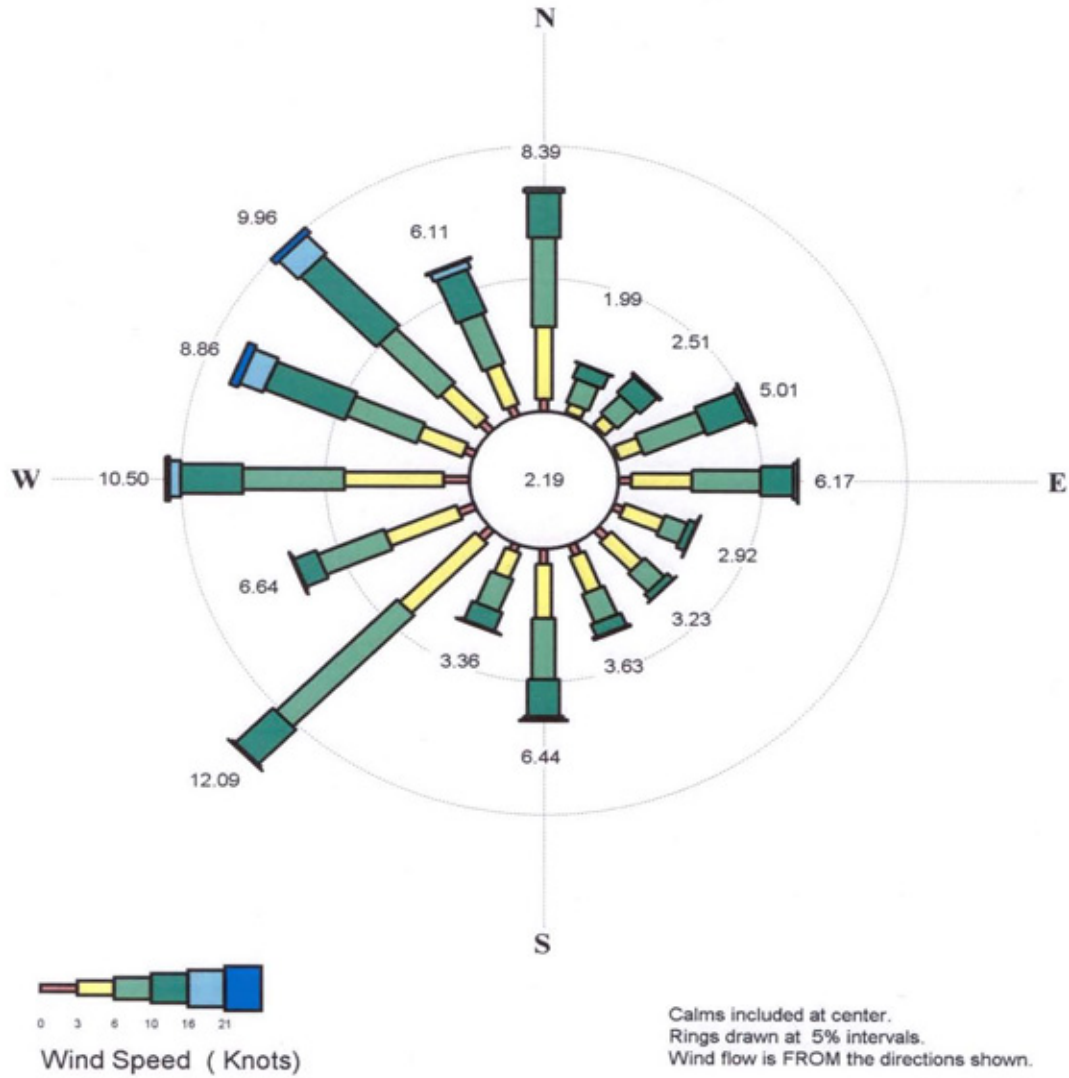
**Figure 3.** Proposed excavation areas are shaded in red (asbestos levels  $\geq 1\%$ ). Results at grid locations represent tremolite and/or actinolite unless otherwise noted. Grid spacing 50' x 50'. (Source: EPA W.R. Grace/Zonolite Asbestos Investigation, August 2001; original drawing by Princeton Junction Engineering, P.C.)



**Figure 4.** Zonolite/W.R. Grace site. Aerial photograph taken in 1970 showing windblown deposits of vermiculite

Zonolite Co. / W.R. Grace  
Trenton, NJ  
1975 - 1979

Data from Philadelphia International Airport  
45 miles SW of site



**Figure 5.** Prevailing wind map at the Philadelphia International Airport. The Airport is 45 miles southwest of the Zonolite/W.R. Grace site