

LEGEND:

- - - Existing 5 ft. Contour Interval
- Existing Trenches
- - - Approximate Watson Johnson Landfill Boundary Line
- Ⓜ Residential Well Sample Designation

0 60 300 600
APPROX. SCALE IN FEET

TETRA TECH, INC.

Figure 9

Residential Well Sample Location Map
Watson Johnson Landfill
Quakertown, Berks Co., Pennsylvania

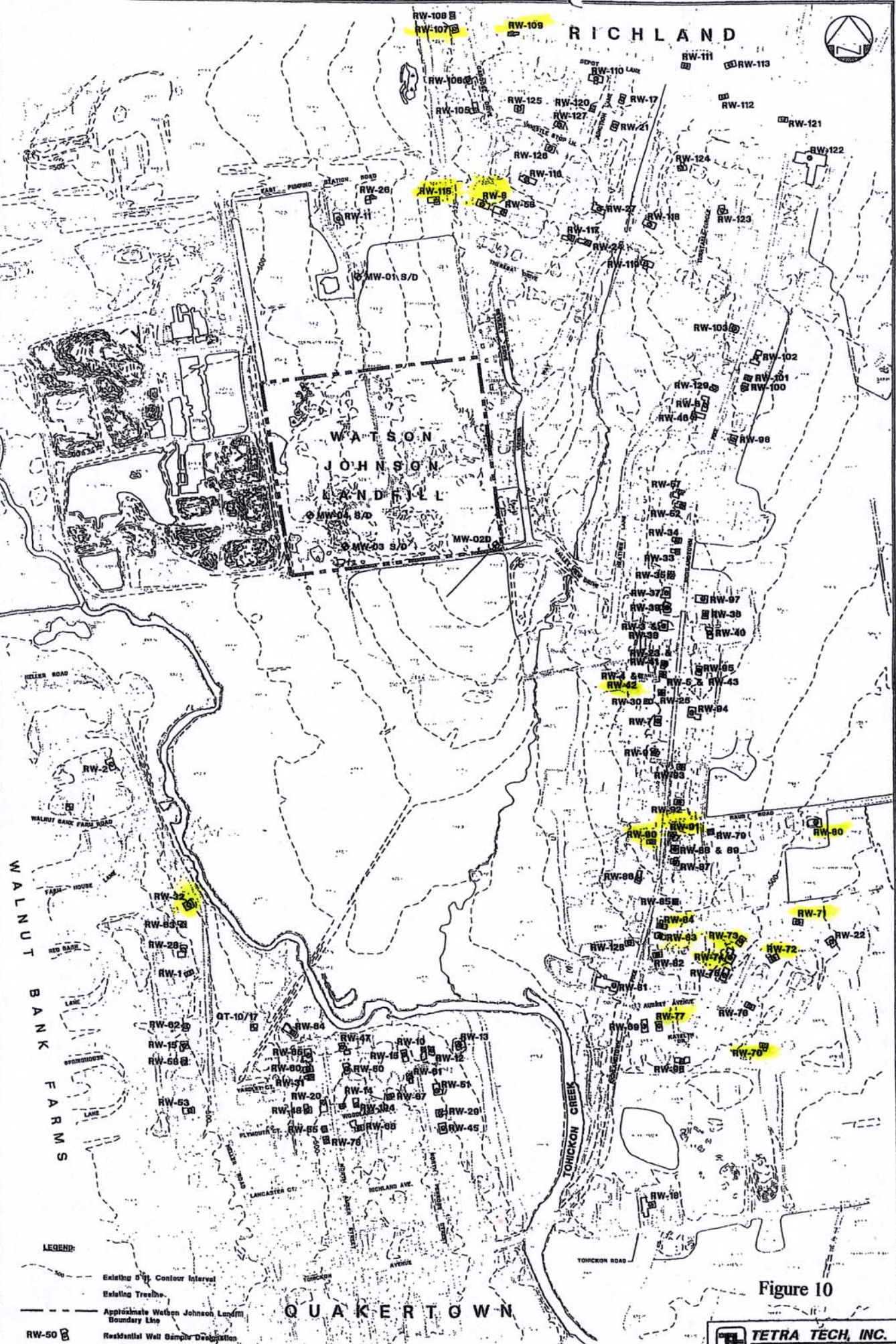
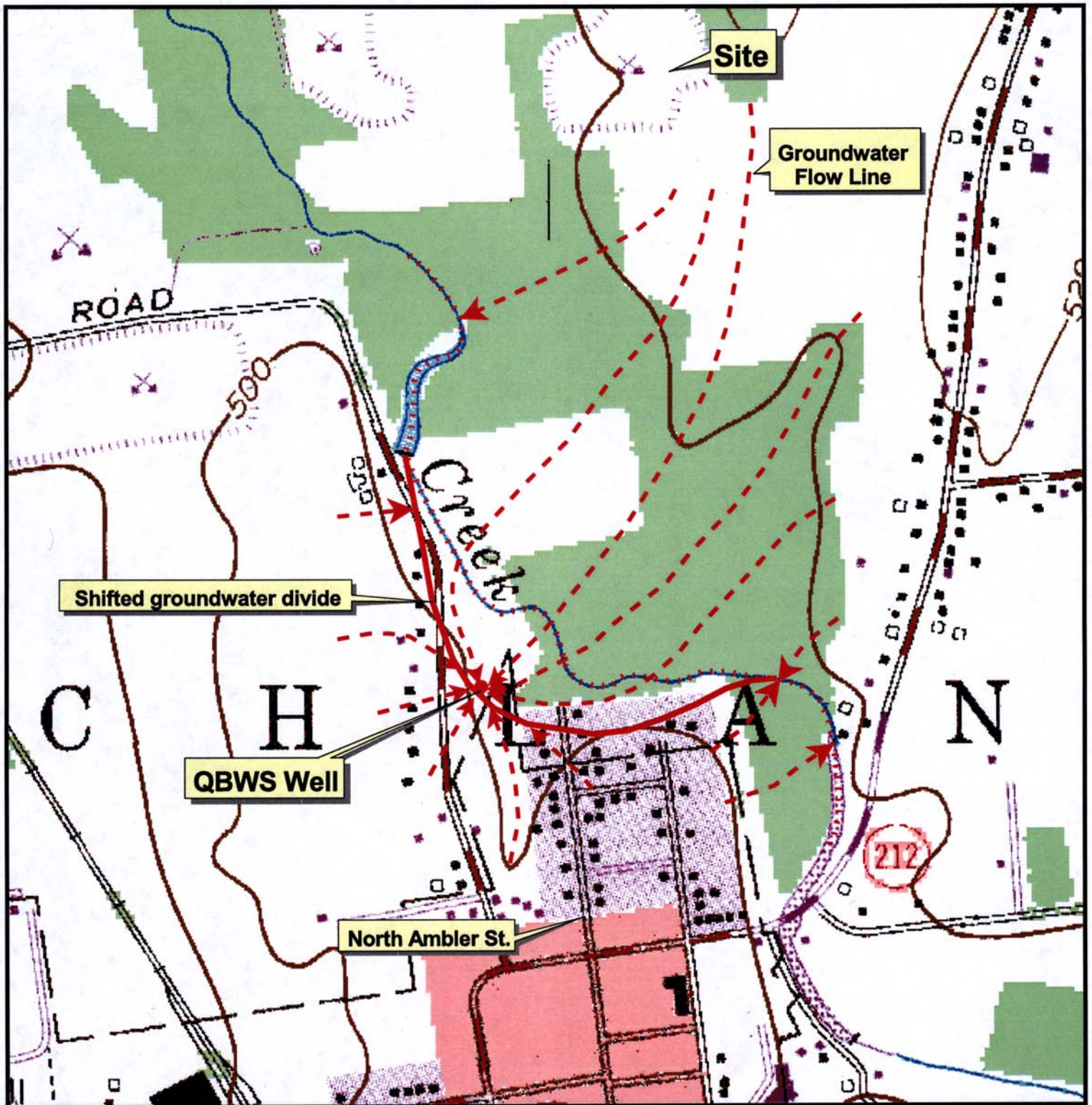


Figure 10

TETRA TECH, INC.
 Residential Well Sample Location Map
 Watson Johnson Landfill
 Quakertown, Bucks Co., Pennsylvania

Figure 11

Watson Johnson Landfill
Anticipated Shallow Groundwater Flow - Pumping Scenario



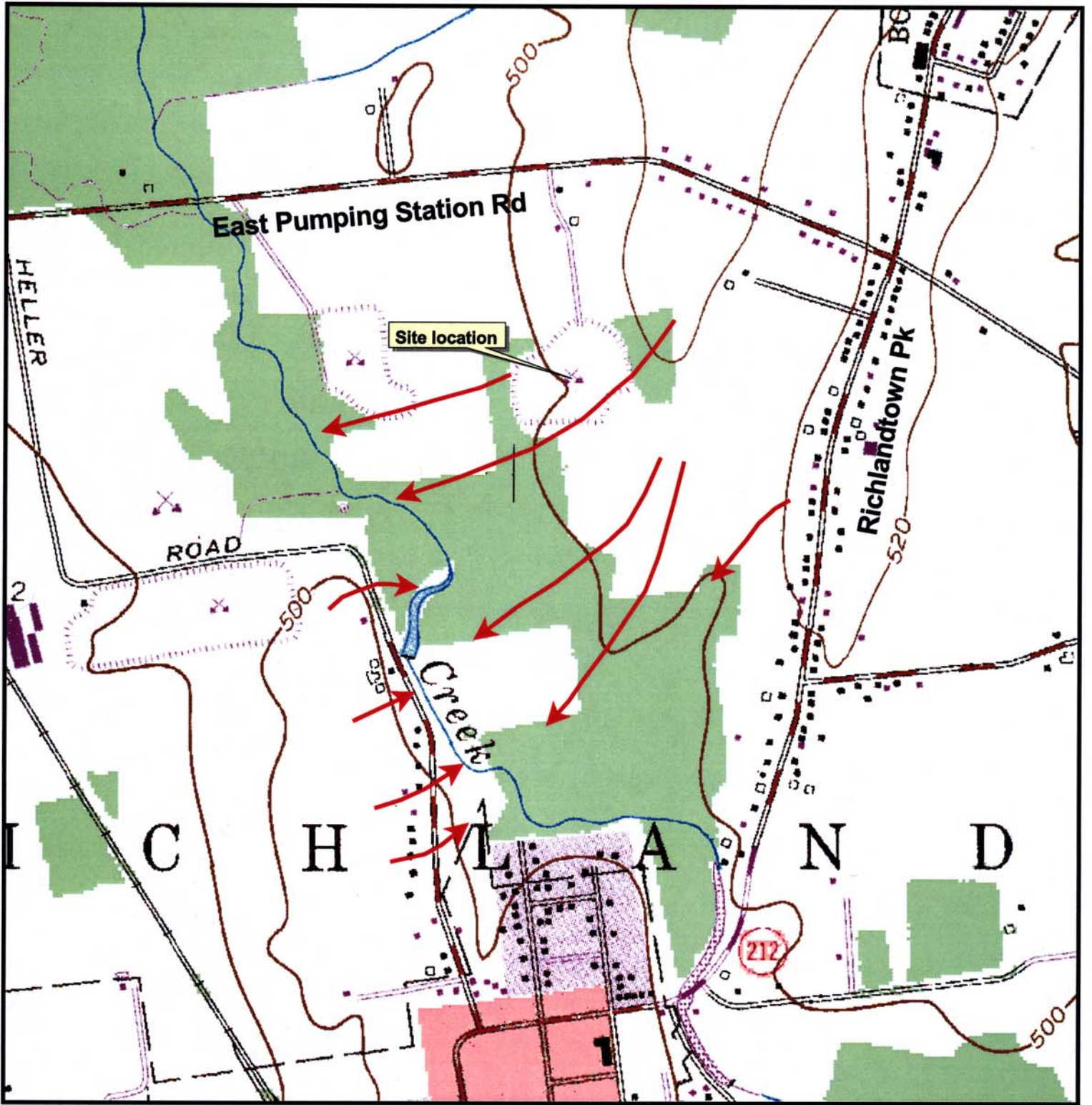
1000 0 1000 Feet



- Legend
- Groundwater flow
 - Groundwater divide (approx.)
 - Groundwater divide (shifted)
 - Well

Figure 12

Watson Johnson Landfill
Anticipated Shallow Groundwater Flow Under Natural Gradients



1000 0 1000 2000 Feet



Legend



Groundwater flow