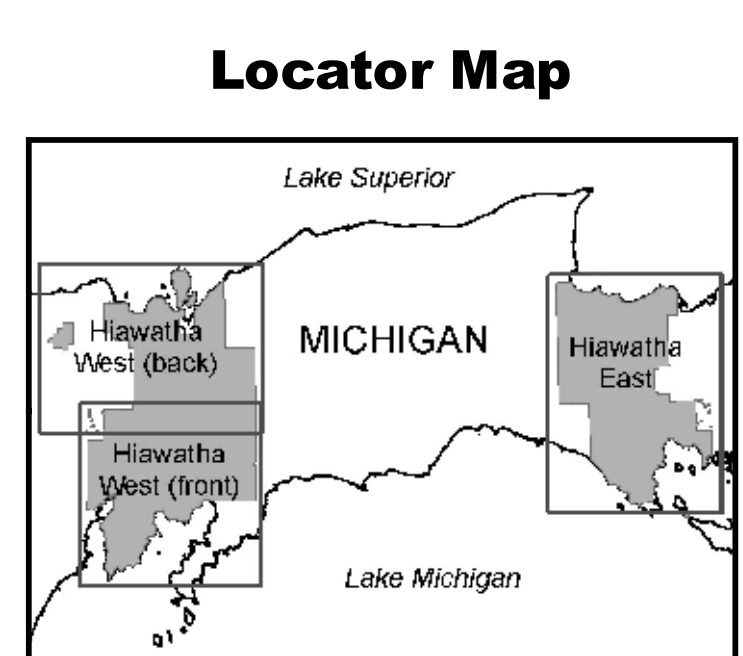


UNITED STATES DEPARTMENT OF AGRICULTURE
 FOREST SERVICE
 MICHIGAN
 2008/2009
 America's Great Outdoors

Motor Vehicle Use Map
 Hiawatha National Forest
 West (South)



Information Sources

www.fs.fed.us/fo/forests/hiawatha

Forest Supervisor's Office
 2727 North Lincoln Road
 Escanaba, MI 49829
 Phone: 906-756-4062
 TDD: 906-789-3337

Rapid River Ranger District
 2181 U.S. Highway 2
 Rapid River, MI 49878
 Phone: 906-474-6442
 TDD: 906-474-6570

Manistique Ranger District
 491 East Lake Shore Drive
 Manistique, MI 49854
 Phone: 906-341-5666
 TDD: 906-341-3514

Munising Ranger District
 400 East Munising Avenue
 Munising, MI 49862
 Phone: 906-387-2512
 TDD: 906-387-3371

Sault Ste Marie Ranger District
 4000 175 Business Spur
 Sault Ste Marie, MI 49783
 Phone: 906-635-5311
 TDD: 906-635-9154

St. Ignace Ranger District
 1900 W. US 2
 St. Ignace, MI 49781
 Phone: 906-643-7900
 TDD: 906-643-7611



treadlightly!
 LEAVING A GOOD IMPRESSION

Travel and recreate with minimum impact. Respect the environment and the rights of others. Educate yourself, plan and prepare before you go. Allow for future use of the outdoors by leaving it better than you found it. Discover the rewards of responsible recreation. For more information on Tread Lightly!, go to www.treadlightly.org or call 1-800-966-9800.

The U.S. Department of Agriculture (USDA) prohibits discrimination in all its programs and activities on the basis of race, color, national origin, age, disability, and where applicable, sex, marital status, familial status, parental status, religion, sexual orientation, genetic information, political beliefs, reprisal, or because all or part of an individual's income is derived from any public assistance program. (Not all prohibited bases apply to all programs.) Persons with disabilities who require alternative means for communication of program information (Braille, large print, audiotape, etc.) should contact USDA's TARGET Center at (202) 720-2600 (voice and TDD). To file a complaint of discrimination, write to USDA, Director, Office of Civil Rights, 1400 Independence Avenue, S.W., Washington, D.C. 20250-9410, or call (800) 795-3272 (voice) or (202) 720-6382 (TDD). USDA is an equal opportunity provider and employer.

LEGEND

- Roads Open to Highway Legal Vehicles Only
- Roads Open to All Vehicles
- Trails Open to Vehicles 50" or Less in Width
- Seasonal Designation (See Table)
(Use along with road and trail symbols listed above)
- Interstate
- Other Public Roads
- Other Public Trails
- Open To Cross Country Travel
- Forest or Unit Boundary
- Non-National Forest System Lands within this National Forest
- Wilderness
- Lakes

PURPOSE AND CONTENTS OF THIS MAP

This map dated 09/30/2008 shows the National Forest System roads, National Forest System trails, and the areas on National Forest System lands in the Hiawatha National Forest that are designated for motor vehicle use pursuant to 36 CFR 212.51. The map also contains a list of those designated roads, trails, and areas that enumerates the types of vehicles that are allowed on each route and in each area and any seasonal restrictions that apply on those routes and in those areas.

Designation of a road, trail, or area for motor vehicle use by a particular class of vehicle under 36 CFR 212.51 should not be interpreted as encouraging or inviting use, or to imply that the road, trail or area is passable, actively maintained, or safe for travel. Motor vehicle designations include parking along designated routes and at facilities associated with designated routes when it is safe to do so and when not causing damage to National Forest System resources. Seasonal weather conditions and natural events may render designated routes and trails impassable for extended periods. Designated areas may contain dangerous or impassable terrain. Many designated roads and trails may be passable only by high-clearance vehicles or four-wheel drive vehicles. Maintenance of designated roads and trails will depend on available resources, and many may receive little maintenance.

This motor vehicle use map identifies those roads, trails, and areas designated for the motor vehicle use under 36 CFR 212.51 for the purpose of enforcing the prohibition at 36 CFR 261.13. This is a limited purpose. The other public roads are shown for information and navigation purposes only and are not subject to designation under the Forest Service travel management regulation.

These designations apply only to National Forest System roads, National Forest System trails, and areas on National Forest System lands.

PROHIBITIONS

It is prohibited to possess or operate a motor vehicle on National Forest System lands on the Hiawatha National Forest other than in accordance with these designations (36 CFR 261.13).

Violations of 36 CFR 261.13 are subject to a fine of up to \$5,000 or imprisonment for up to 6 months or both (U.S.C. 3571(e)). This prohibition applies regardless of the presence or absence of signs.

This map does not display nonmotorized uses, over-snow uses, or other facilities and attractions on the Hiawatha National Forest. Obtain a forest visitor map for more complete information.

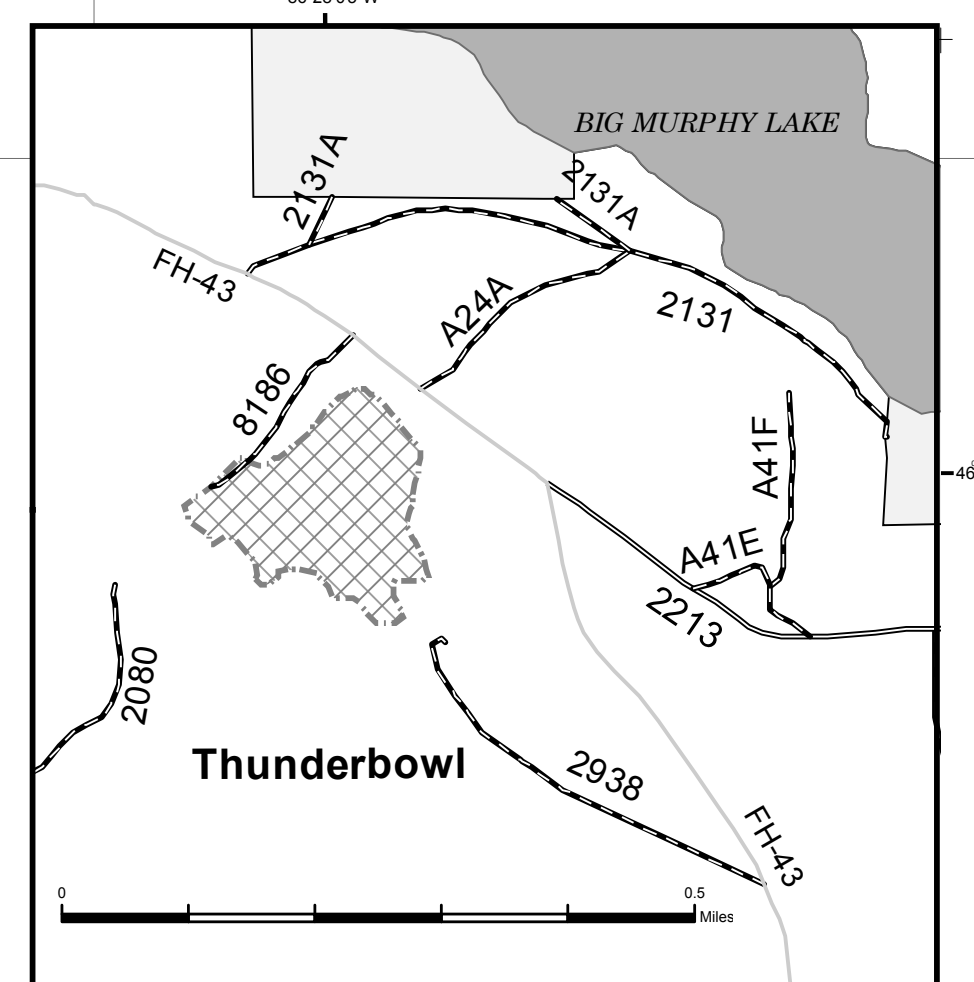
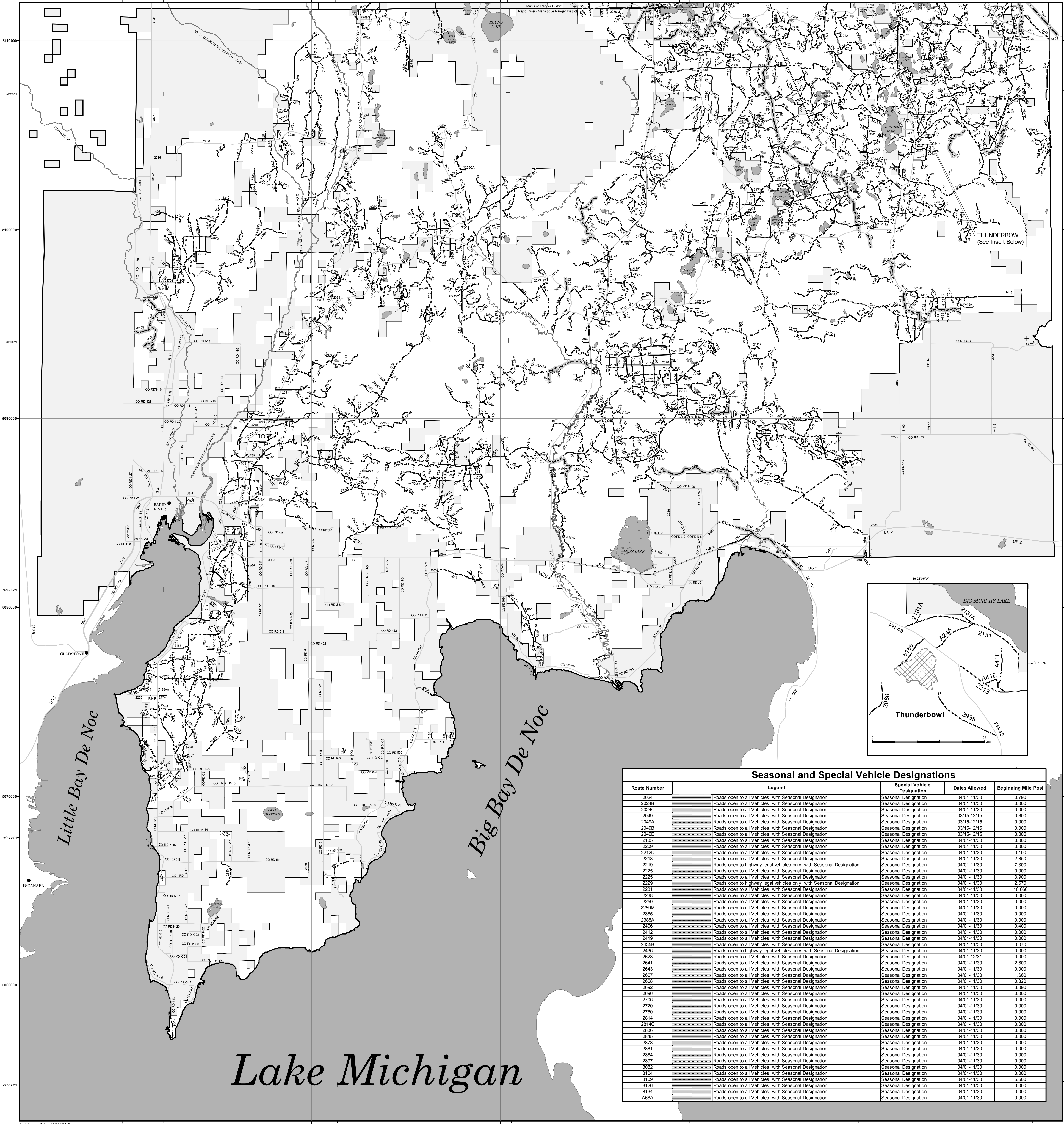
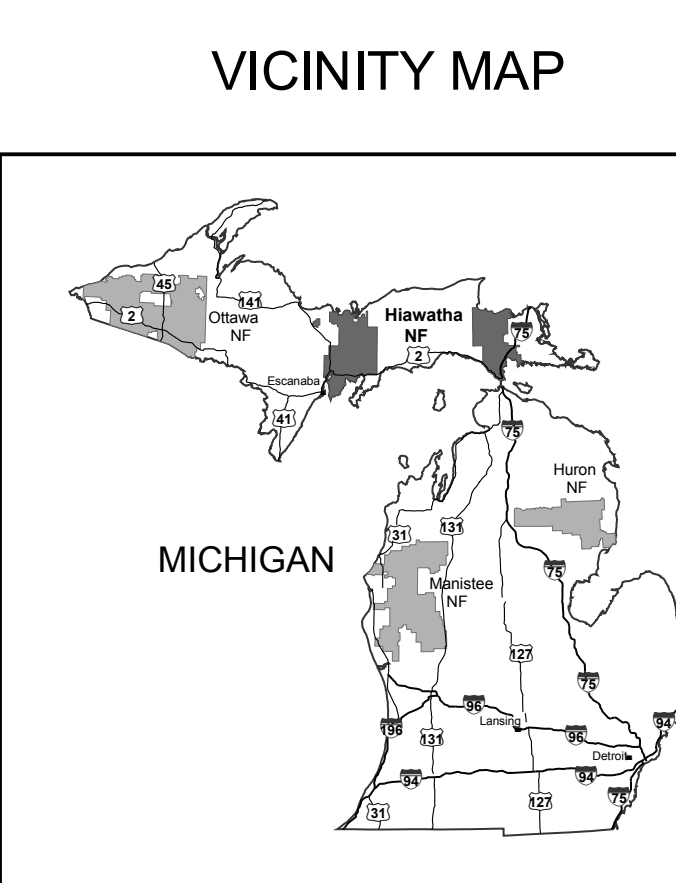
Designated roads, trails and areas may also be subject to temporary, emergency closures, and visitors must comply with signs notifying them of such restrictions. A national forest may issue an order to close a road, trail or area on a temporary basis to protect the life, health, or safety of forest visitors or the natural or cultural resources in these areas. Such a temporary and/or emergency closure is consistent with the Travel Management Rule (36 CFR 212.52(b)), 36 CFR 261 subpart B).

The designation "road or trail open to all motor vehicles" does not supersede vehicle size or weight limits imposed through State traffic law.

Motorized vehicle use off designated roads and trails for the purpose of game retrieval is not permitted.

Motorized dispersed camping is prohibited off designated routes. Obtain a forest visitor map from your USDA-FS office for more information.

Motor vehicle designations include parking along designated routes and at facilities associated with designated routes when it is safe to do so and when not causing damage to National Forest System Resources.



Seasonal and Special Vehicle Designations

Route Number	Legend	Special Vehicle	Dates Allowed	Beginning Mile Post
2024	-----	Roads open to all Vehicles, with Seasonal Designation	04/01-11/30	0.790
2024B	-----	Roads open to all Vehicles, with Seasonal Designation	04/01-11/30	0.000
2024C	-----	Roads open to all Vehicles, with Seasonal Designation	04/01-11/30	0.000
2049	-----	Roads open to all Vehicles, with Seasonal Designation	03/15-12/15	0.300
2049A	-----	Roads open to all Vehicles, with Seasonal Designation	03/15-12/15	0.000
2049B	-----	Roads open to all Vehicles, with Seasonal Designation	03/15-12/15	0.000
2049C	-----	Roads open to all Vehicles, with Seasonal Designation	03/15-12/15	0.000
2135	-----	Roads open to all Vehicles, with Seasonal Designation	04/01-11/30	0.000
2209	-----	Roads open to all Vehicles, with Seasonal Designation	04/01-11/30	0.000
2212D	-----	Roads open to all Vehicles, with Seasonal Designation	04/01-11/30	0.100
2219	-----	Roads open to all Vehicles, with Seasonal Designation	04/01-11/30	2.850
2219	-----	Roads open to highway legal vehicles only, with Seasonal Designation	04/01-11/30	7.300
2225	-----	Roads open to all Vehicles, with Seasonal Designation	04/01-11/30	0.000
2225	-----	Roads open to all Vehicles, with Seasonal Designation	04/01-11/30	3.900
2229	-----	Roads open to highway legal vehicles only, with Seasonal Designation	04/01-11/30	2.570
2231	-----	Roads open to all Vehicles, with Seasonal Designation	04/01-11/30	10.660
2238	-----	Roads open to all Vehicles, with Seasonal Designation	04/01-11/30	0.000
2250	-----	Roads open to all Vehicles, with Seasonal Designation	04/01-11/30	0.000
2259M	-----	Roads open to all Vehicles, with Seasonal Designation	04/01-11/30	0.000
2385	-----	Roads open to all Vehicles, with Seasonal Designation	04/01-11/30	0.000
2385A	-----	Roads open to all Vehicles, with Seasonal Designation	04/01-11/30	0.000
2406	-----	Roads open to all Vehicles, with Seasonal Designation	04/01-11/30	0.400
2412	-----	Roads open to all Vehicles, with Seasonal Designation	04/01-11/30	0.000
2419	-----	Roads open to all Vehicles, with Seasonal Designation	04/01-11/30	0.050
2435B	-----	Roads open to all Vehicles, with Seasonal Designation	04/01-11/30	0.070
2436	-----	Roads open to highway legal vehicles only, with Seasonal Designation	04/01-11/30	0.000
2628	-----	Roads open to all Vehicles, with Seasonal Designation	04/01-12/31	0.000
2641	-----	Roads open to all Vehicles, with Seasonal Designation	04/01-11/30	2.600
2643	-----	Roads open to all Vehicles, with Seasonal Designation	04/01-11/30	0.000
2667	-----	Roads open to all Vehicles, with Seasonal Designation	04/01-11/30	1.660
2668	-----	Roads open to all Vehicles, with Seasonal Designation	04/01-11/30	0.320
2692	-----	Roads open to all Vehicles, with Seasonal Designation	04/01-11/30	3.040
2696	-----	Roads open to all Vehicles, with Seasonal Designation	04/01-11/30	0.000
2706	-----	Roads open to all Vehicles, with Seasonal Designation	04/01-11/30	0.000
2720	-----	Roads open to all Vehicles, with Seasonal Designation	04/01-11/30	0.000
2780	-----	Roads open to all Vehicles, with Seasonal Designation	04/01-11/30	0.000
2814	-----	Roads open to all Vehicles, with Seasonal Designation	04/01-11/30	0.000
2814C	-----	Roads open to all Vehicles, with Seasonal Designation	04/01-11/30	0.000
2836	-----	Roads open to all Vehicles, with Seasonal Designation	04/01-11/30	0.000
2845	-----	Roads open to all Vehicles, with Seasonal Designation	04/01-11/30	0.000
2878	-----	Roads open to all Vehicles, with Seasonal Designation	04/01-11/30	0.000
2881	-----	Roads open to all Vehicles, with Seasonal Designation	04/01-11/30	0.000
2884	-----	Roads open to all Vehicles, with Seasonal Designation	04/01-11/30	0.000
2897	-----	Roads open to all Vehicles, with Seasonal Designation	04/01-11/30	0.000
8082	-----	Roads open to all Vehicles, with Seasonal Designation	04/01-11/30	0.000
8104	-----	Roads open to all Vehicles, with Seasonal Designation	04/01-11/30	0.000
8109	-----	Roads open to all Vehicles, with Seasonal Designation	04/01-11/30	5.600
8126	-----	Roads open to all Vehicles, with Seasonal Designation	04/01-11/30	0.000
8134	-----	Roads open to all Vehicles, with Seasonal Designation	04/01-11/30	0.000
8624	-----	Roads open to all Vehicles, with Seasonal Designation	04/01-11/30	0.000