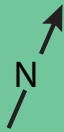
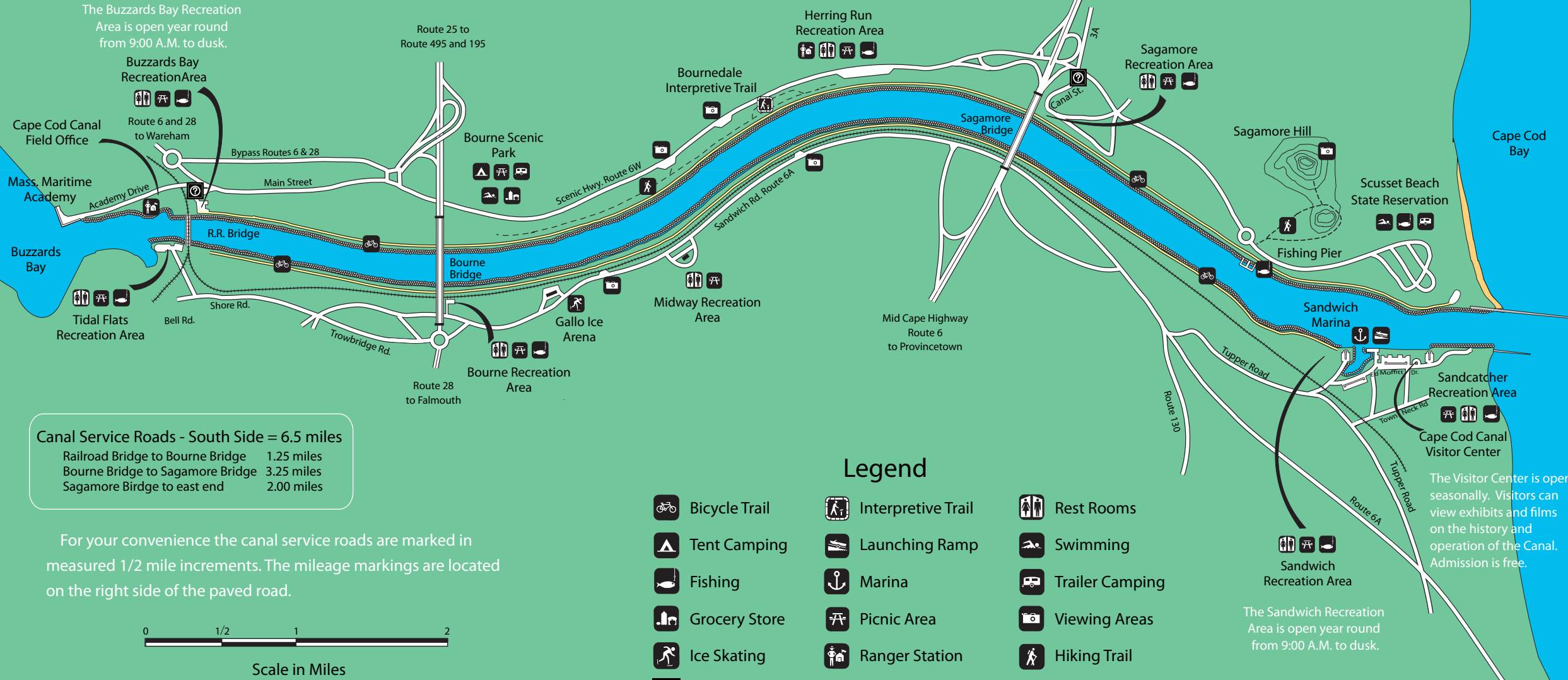


CAPE COD CANAL



Canal Service Roads - North Side = 7 miles

Railroad Bridge to Bourne Bridge	1.25 miles
Bourne Bridge to Herring Run	2.25 miles
Herring Run to Sagamore Bridge	1.00 miles
Sagamore Bridge to east end	2.50 miles



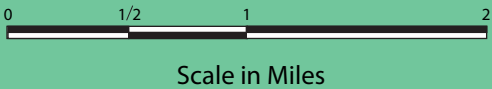
The Herring Run Recreation Area is open year round from 9:00 A.M. to dusk.

The Buzzards Bay Recreation Area is open year round from 9:00 A.M. to dusk.

Canal Service Roads - South Side = 6.5 miles

Railroad Bridge to Bourne Bridge	1.25 miles
Bourne Bridge to Sagamore Bridge	3.25 miles
Sagamore Bridge to east end	2.00 miles

For your convenience the canal service roads are marked in measured 1/2 mile increments. The mileage markings are located on the right side of the paved road.



Legend

- Bicycle Trail
- Tent Camping
- Fishing
- Grocery Store
- Ice Skating
- Tourist Information
- Interpretive Trail
- Launching Ramp
- Marina
- Picnic Area
- Ranger Station
- Rest Rooms
- Swimming
- Trailer Camping
- Viewing Areas
- Hiking Trail

The Visitor Center is open seasonally. Visitors can view exhibits and films on the history and operation of the Canal. Admission is free.

The Sandwich Recreation Area is open year round from 9:00 A.M. to dusk.