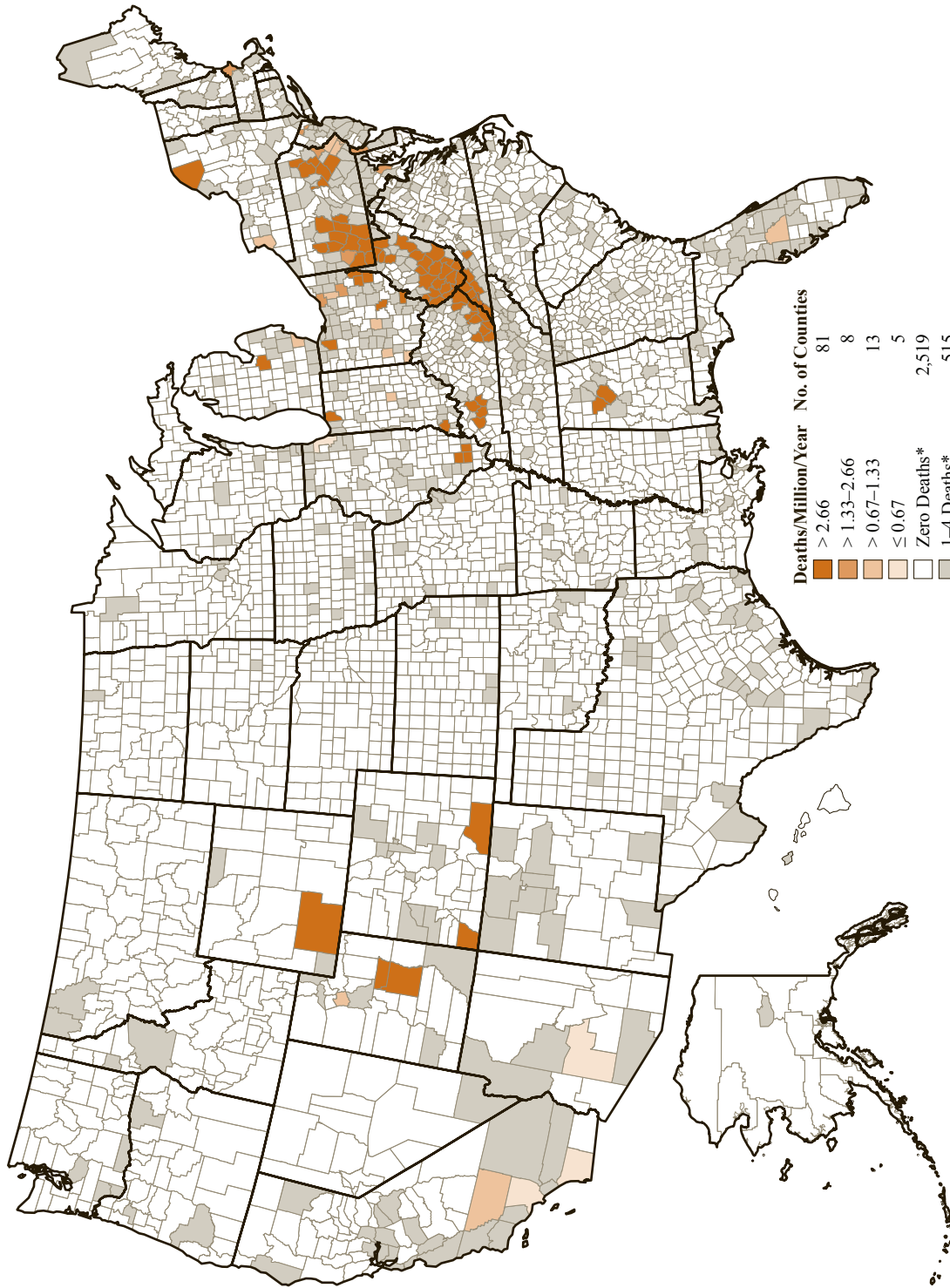


**Unspecified and other pneumoconioses: Age-adjusted death rates by county, U.S. residents age 15 and over, 1995–2004**



\* Age-adjusted rates have not been calculated for counties having less than 5 deaths with the disease of interest or for unincorporated counties (see Appendix H).

NOTE: See appendices for source description, methods, and ICD codes.

SOURCE: National Center for Health Statistics multiple cause-of-death data. Population estimates from U.S. Census Bureau.