

**OFFENDERS IN NEW JERSEY CORRECTIONAL INSTITUTIONS
ON JANUARY 11, 2005, BY MANDATORY MINIMUM TERM**

In New Jersey, since 1979, the courts have utilized mandatory minimum sentences. This means that an offender must serve the entire minimum sentence before being eligible for parole consideration. Mandatory minimum terms are not reduced by earned credits (commutation, minimum security or work).

OFFENDERS IN CORRECTIONAL INSTITUTIONS ON JANUARY 11, 2005, BY MANDATORY MINIMUM TERM

Mandatory Minimum Term	Total		Prison Males		Youth Complex		ADTC		Edna Mahan		Other Facilities	
	#	%	#	%	#	%	#	%	#	%	#	%
TOTAL OFFENDERS	17,012	100%	11,327	100%	2,835	100%	348	100%	587	100%	1,915	100%
<18 Months	1,405	8%	568	5%	553	20%	0	0%	44	7%	240	13%
18 Months	883	5%	450	4%	235	8%	0	0%	25	4%	173	9%
2 Years	2,564	15%	1,507	13%	454	16%	2	1%	92	16%	509	27%
3 Years	2,779	16%	1,742	15%	410	14%	15	4%	88	15%	524	27%
4 Years	1,437	8%	918	8%	297	10%	20	6%	60	10%	142	7%
5 Years	1,811	11%	1,185	10%	322	11%	88	25%	84	14%	132	7%
6-9 Years	1,965	12%	1,365	12%	318	11%	83	24%	68	12%	131	7%
10 Years	669	4%	516	5%	65	2%	43	12%	21	4%	24	1%
11-14 Years	799	5%	642	6%	84	3%	30	9%	25	4%	18	1%
15 Years	438	3%	352	3%	24	1%	35	10%	15	3%	12	1%
16-19 Years	370	2%	309	3%	33	1%	11	3%	15	3%	2	0%
20-24 Years	310	2%	275	2%	15	1%	8	2%	10	2%	2	0%
25-29 Years	290	2%	271	2%	6	0%	7	2%	4	1%	2	0%
30 Years	760	4%	713	6%	15	1%	3	1%	27	5%	2	0%
30+ Years	532	3%	514	5%	4	0%	3	1%	9	2%	2	0%

- Sixty-five percent (65%) of all adult offenders have mandatory minimum terms (17,012 out of 26, 239).
- The median mandatory minimum term is 4 years.
- Sixteen percent (16%) of those with mandatory minimum terms have mandatory minimum terms of 15 years or more.

Prison Complex Offenders on January 11, 2005, By Mandatory Minimum Term

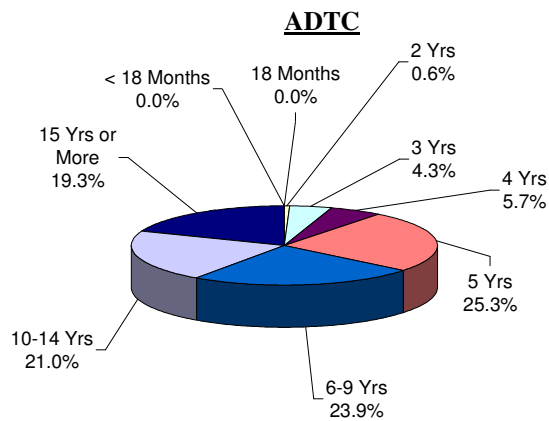
Institution	Total	< 18 Months	18 Months	2 Years	3 Years	4 Years	5 Years	6-9 Years	10 Years	11-14 Years	15 Years	16-19 Years	20-24 Years	25-29 Years	30 Years	30+ Years
Bayside Main	777 100%	46 6%	35 5%	144 19%	171 22%	109 14%	101 13%	93 12%	26 3%	24 3%	13 2%	3 0%	2 0%	6 1%	3 0%	1 0%
Bayside Farm	395 100%	18 5%	23 6%	70 18%	77 19%	37 9%	45 11%	63 16%	29 7%	16 4%	7 2%	4 1%	2 1%	4 1%	0 0%	0 0%
Bayside Ancora	181 100%	36 20%	23 13%	57 31%	37 20%	11 6%	9 5%	7 4%	1 1%	0 0%	0 0%	0 0%	0 0%	0 0%	0 0%	0 0%
Bayside Total	1,353 100%	100 7%	81 6%	271 20%	285 21%	157 12%	155 11%	163 12%	56 4%	40 3%	20 1%	7 1%	4 0%	10 1%	3 0%	1 0%
CRAF Jones Farm	90 100%	32 36%	15 17%	31 34%	9 10%	0 0%	0 0%	3 3%	0 0%	0 0%	0 0%	0 0%	0 0%	0 0%	0 0%	0 0%
CRAF Reception	440 100%	54 12%	31 7%	89 20%	89 20%	46 10%	61 14%	34 8%	13 3%	7 2%	4 1%	8 2%	1 0%	0 0%	2 0%	1 0%
CRAF Total	530 100%	86 16%	46 9%	120 23%	98 18%	46 9%	61 12%	37 7%	13 2%	7 1%	4 1%	8 2%	1 0%	0 0%	2 0%	1 0%
East Jersey Main	1,154 100%	15 1%	10 1%	33 3%	53 5%	41 4%	105 9%	142 12%	97 8%	175 15%	97 8%	86 7%	61 5%	54 5%	143 12%	42 4%
East Jersey Camp	73 100%	6 8%	4 5%	7 10%	19 26%	2 3%	14 19%	11 15%	6 8%	2 3%	2 3%	0 0%	0 0%	0 0%	0 0%	0 0%
East Jersey Marlboro	1 100%	0 0%	0 0%	1 100%	0 0%	0 0%	0 0%	0 0%	0 0%	0 0%	0 0%	0 0%	0 0%	0 0%	0 0%	0 0%
East Jersey Ad Seg	298 100%	23 8%	16 5%	34 11%	47 16%	20 7%	36 12%	41 14%	16 5%	20 7%	6 2%	10 3%	6 2%	6 2%	12 4%	5 2%
East Jersey Total	1,526 100%	44 3%	30 2%	75 5%	119 8%	63 4%	155 10%	194 13%	119 8%	197 13%	105 7%	96 6%	67 4%	60 4%	155 10%	47 3%

Prison Complex Offenders on January 11, 2005, By Mandatory Minimum Term

Institution	Total	< 18 Months	18 Months	2 Years	3 Years	4 Years	5 Years	6-9 Years	10 Years	11-14 Years	15 Years	16-19 Years	20-24 Years	25-29 Years	30 Years	30+ Years
Midstate	269 100%	28 10%	22 8%	62 23%	82 30%	33 12%	10 4%	21 8%	5 2%	3 1%	2 1%	0 0%	1 0%	0 0%	0 0%	0 0%
NJ State Prison Ad Seg Female	12 100%	3 0%	1 0%	2 0%	1 0%	0 0%	3 0%	0 0%	0 0%	0 0%	1 0%	1 0%	0 0%	0 0%	0 0%	0 0%
NJ State Prison Main	1,598 100%	22 1%	11 1%	52 3%	65 4%	23 1%	41 3%	61 4%	34 2%	35 2%	38 2%	60 4%	115 7%	154 10%	467 29%	420 26%
NJ State Prison Total	1,610 100%	25 2%	12 1%	54 3%	66 4%	23 1%	44 3%	61 4%	34 2%	35 2%	39 2%	61 4%	115 7%	154 10%	467 29%	420 26%
Northern Main	1,522 100%	72 5%	50 3%	171 11%	245 16%	143 9%	201 13%	254 17%	70 5%	136 9%	49 3%	50 3%	25 2%	10 1%	33 2%	13 1%
Northern Ad Seg Male	375 100%	26 7%	7 2%	39 10%	65 17%	35 9%	51 14%	51 14%	22 6%	21 6%	21 6%	8 2%	8 2%	3 1%	11 3%	7 2%
Northern Total	1,897 100%	98 5%	57 3%	210 11%	310 16%	178 9%	252 13%	305 16%	92 5%	157 8%	70 4%	58 3%	33 2%	13 1%	44 2%	20 1%
Riverfront	730 100%	21 3%	25 3%	102 14%	116 16%	77 11%	109 15%	126 17%	48 7%	36 5%	22 3%	11 2%	13 2%	10 1%	9 1%	5 1%
Southern	1,203 100%	76 6%	85 7%	300 25%	347 29%	118 10%	130 11%	93 8%	29 2%	7 1%	9 1%	1 0%	3 0%	2 0%	2 0%	1 0%
South Woods	2,209 100%	90 4%	92 4%	313 14%	319 14%	223 10%	269 12%	365 17%	120 5%	160 7%	81 4%	67 3%	38 2%	22 1%	31 1%	19 1%
SUBTOTAL PRISON MALES	11,327 100%	568 5%	450 4%	1,507 13%	1,742 15%	918 8%	1,185 10%	1,365 12%	516 5%	642 6%	352 3%	309 3%	275 2%	271 2%	713 6%	514 5%

Prison Complex Offenders on January 11, 2005, By Mandatory Minimum Term

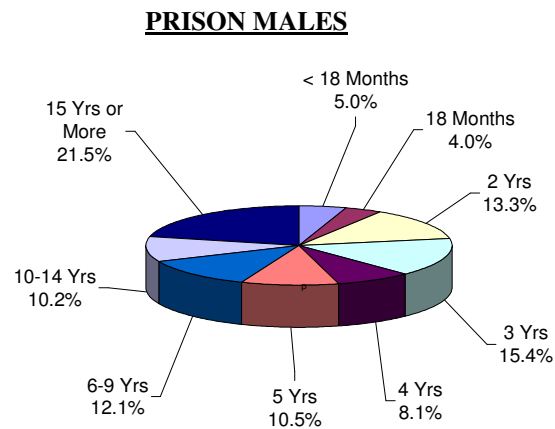
Institution	Total	< 18 Months	18 Months	2 Years	3 Years	4 Years	5 Years	6-9 Years	10 Years	11-14 Years	15 Years	16-19 Years	20-24 Years	25-29 Years	30 Years	30+ Years
ADTC	348 100%	0 0%	0 0%	2 1%	15 4%	20 6%	88 25%	83 24%	43 12%	30 9%	35 10%	11 3%	8 2%	7 2%	3 1%	3 1%
Subtotal	11,675 100%	568 5%	450 4%	1,509 13%	1,757 15%	938 8%	1,273 11%	1,448 12%	559 5%	672 6%	387 3%	320 3%	283 2%	278 2%	716 6%	517 4%
Mahan - Female Prison	587 100%	44 7%	25 4%	92 16%	88 15%	60 10%	84 14%	68 12%	21 4%	25 4%	15 3%	15 3%	10 2%	4 1%	27 5%	9 2%
Total Prison Complex	12,262 100%	612 5%	475 4%	1,601 13%	1,845 15%	998 8%	1,357 11%	1,516 12%	580 5%	697 6%	402 3%	335 3%	293 2%	282 2%	743 6%	526 4%



The median mandatory minimum term at ADTC is 8 years 5 months.

Fifty-two percent (52%) of the ADTC population have mandatory minimum sentences (348 of 674).

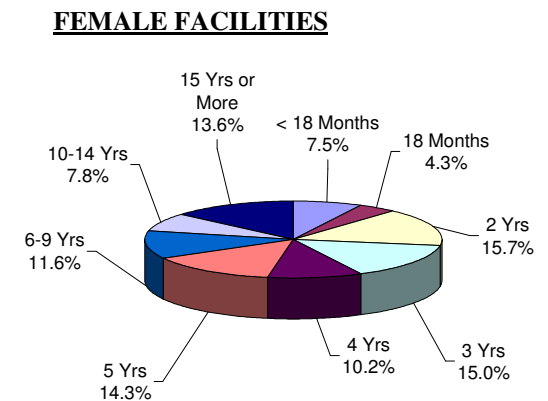
Forty percent (40%) have mandatory minimum terms of 10 years or longer.



Of the 16,901 prison complex males, 67% (11,327) have mandatory minimum terms.

The median mandatory minimum term for prison complex males is 5 years (ADTC excluded).

Eighty-three percent (83%) of New Jersey State Prison inmates have mandatory minimum terms and 78% percent of those have minimum terms of 15 years or more.



The median mandatory minimum term at Edna Mahan is 4 years.

At Edna Mahan, 52% of the females housed have minimum terms (587 of 1,138).

Sixty-seven percent (67%) of the females with mandatory minimum terms have terms of 5 years or less.

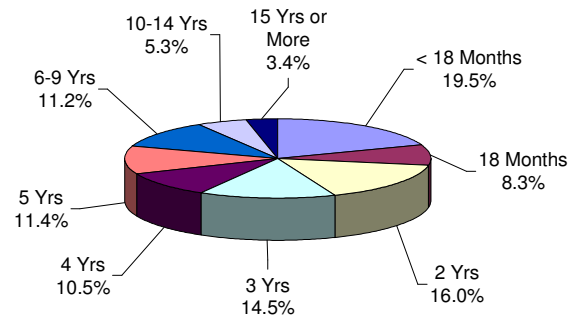
Youth Complex Offenders on January 11, 2005, By Mandatory Minimum Term

Institution	Total	< 18 Months	18 Months	2 Years	3 Years	4 Years	5 Years	6-9 Years	10 Years	11-14 Years	15 Years	16-19 Years	20-24 Years	25-29 Years	30 Years	30+ Years
Garden State	1,144	168	77	200	142	114	129	143	37	54	17	24	15	5	15	4
	100%	15%	7%	17%	12%	10%	11%	13%	3%	5%	1%	2%	1%	0%	1%	0%
Mountainview Main	676	175	66	129	141	88	48	25	0	1	2	1	0	0	0	0
	100%	26%	10%	19%	21%	13%	7%	4%	0%	0%	0%	0%	0%	0%	0%	0%
Mountainview Stokes	56	14	6	16	13	1	4	2	0	0	0	0	0	0	0	0
	100%	25%	11%	29%	23%	2%	7%	4%	0%	0%	0%	0%	0%	0%	0%	0%
Mountainview Total	732	189	72	145	154	89	52	27	0	1	2	1	0	0	0	0
	100%	26%	10%	20%	21%	12%	7%	4%	0%	0%	0%	2%	0%	0%	0%	0%
Wagner Main	727	106	54	92	97	76	122	125	24	22	4	5	0	0	0	0
	100%	15%	7%	13%	13%	10%	17%	17%	3%	3%	1%	1%	0%	0%	0%	0%
Wagner Ad Seg	156	34	15	16	17	18	19	21	4	7	1	3	0	1	0	0
	100%	22%	10%	10%	11%	12%	12%	13%	3%	4%	1%	2%	0%	1%	0%	0%
Wagner Adult Boot Camp	76	56	17	1	0	0	0	2	0	0	0	0	0	0	0	0
	100%	74%	22%	1%	0%	0%	0%	3%	0%	0%	0%	0%	0%	0%	0%	0%
Wagner Total	959	196	86	109	114	94	141	148	28	29	5	8	0	1	0	0
	100%	20%	9%	11%	12%	10%	15%	15%	3%	3%	1%	1%	0%	0%	0%	0%
Total Youth	2,835	553	235	454	410	297	322	318	65	84	24	33	15	6	15	4
	100%	20%	8%	16%	14%	10%	11%	11%	2%	3%	1%	1%	1%	0%	1%	0%

Offenders In Other Facilities on January 11, 2005, By Mandatory Minimum Term

Institution	Total	< 18 Months	18 Months	2 Years	3 Years	4 Years	5 Years	6-9 Years	10 Years	11-14 Years	15 Years	16-19 Years	20-24 Years	25-29 Years	30 Years	30+ Years
Central Medical	11 100%	0 0%	0 0%	0 0%	2 18%	0 0%	2 18%	1 9%	0 0%	1 9%	1 9%	0 0%	0 0%	1 9%	1 9%	2 18%
County Jail	119 100%	26 22%	7 6%	27 23%	24 20%	7 6%	16 13%	8 7%	2 2%	2 2%	0 0%	0 0%	0 0%	0 0%	0 0%	0 0%
EM/HC	25 100%	8 32%	5 20%	6 24%	3 12%	1 4%	0 0%	2 8%	0 0%	0 0%	0 0%	0 0%	0 0%	0 0%	0 0%	0 0%
Halfway House	1,760 100%	206 12%	161 9%	476 27%	495 28%	134 8%	114 6%	120 7%	22 1%	15 1%	11 1%	2 0%	2 0%	1 0%	1 0%	0 0%
Total Other Facilities	1,915 100%	240 13%	173 9%	509 27%	524 27%	142 7%	132 7%	131 7%	24 1%	18 1%	12 1%	2 0%	2 0%	2 0%	2 0%	2 0%

YOUTH COMPLEX

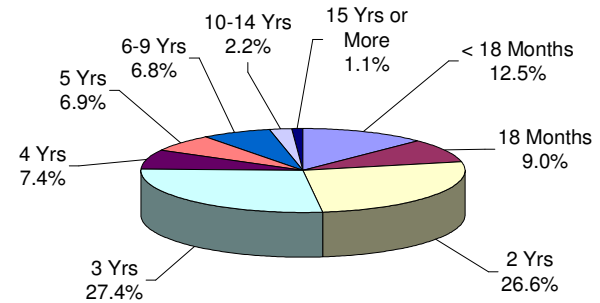


The median mandatory minimum term for youth complex offenders is 3 years.

Among youth complex offenders, 66% have mandatory minimum terms (2,835 of 4,324).

Of these, 79% have mandatory minimum terms of 5 years or less.

OFFENDERS IN OTHER FACILITIES



The median mandatory minimum term for inmates in 'other facilities' is 3 years.

Sixty percent (60%) of the offenders in 'other facilities' have mandatory minimum terms (1,915 of 3,202).

Of these, 90% have mandatory minimum terms of 5 years or less.