

**OFFENDERS IN NEW JERSEY CORRECTIONAL INSTITUTIONS  
ON JANUARY 12, 2004, BY MANDATORY MINIMUM TERM**

In New Jersey, since 1979, the courts have utilized mandatory minimum sentences. This means that an offender must serve the entire minimum sentence before being eligible for parole consideration. Mandatory minimum terms are not reduced by earned credits (commutation, minimum security or work).

**OFFENDERS IN CORRECTIONAL INSTITUTIONS ON JANUARY 12, 2004, BY MANDATORY MINIMUM TERM**

Mandatory Minimum Term	Total		Prison Males		Youth Complex		ADTC		Edna Mahan		Other Facilities	
	#	%	#	%	#	%	#	%	#	%	#	%
TOTAL OFFENDERS	16,746	100%	11,048	100%	2,805	100%	303	100%	593	100%	1,997	100%
<18 Months	1,504	9%	572	5%	604	22%	3	1%	63	11%	262	13%
18 Months	924	6%	463	4%	265	9%	2	1%	26	4%	168	8%
2 Years	2,508	15%	1,476	13%	441	16%	5	2%	91	15%	495	25%
3 Years	2,932	18%	1,776	16%	449	16%	13	4%	100	17%	594	30%
4 Years	1,336	8%	856	8%	258	9%	20	7%	50	8%	152	8%
5 Years	1,690	10%	1,113	10%	276	10%	79	26%	81	14%	141	7%
6-9 Years	1,871	11%	1,325	12%	294	10%	66	22%	65	11%	121	6%
10 Years	673	4%	515	5%	63	2%	43	14%	21	4%	31	2%
11-14 Years	731	4%	599	5%	75	3%	20	7%	22	4%	15	1%
15 Years	436	3%	360	3%	20	1%	30	10%	17	3%	9	0%
16-19 Years	328	2%	284	3%	24	1%	5	2%	11	2%	4	0%
20-24 Years	296	2%	267	2%	11	0%	6	2%	8	1%	4	0%
25-29 Years	276	2%	260	2%	6	0%	6	2%	4	1%	0	0%
30 Years	744	4%	697	6%	16	1%	3	1%	27	5%	1	0%
30+ Years	497	3%	485	4%	3	0%	2	1%	7	1%	0	0%

- Sixty-three percent (63%) of all adult offenders have mandatory minimum terms (16,746 out of 26,581).
- The median mandatory minimum term is 4 years.
- Fifteen percent (15%) of those with mandatory minimum terms have mandatory minimum terms of 15 years or more.



**Prison Complex Offenders on January 12, 2004, By Mandatory Minimum Term**

Institution	Total	< 18 Months	18 Months	2 Years	3 Years	4 Years	5 Years	6-9 Years	10 Years	11-14 Years	15 Years	16-19 Years	20-24 Years	25-29 Years	30 Years	30+ Years
<b>Bayside Main</b>	722 100%	39 5%	39 5%	133 18%	160 22%	82 11%	94 13%	82 11%	31 4%	25 3%	17 2%	4 1%	7 1%	6 1%	2 0%	1 0%
<b>Bayside Farm</b>	419 100%	29 7%	17 4%	77 18%	103 25%	34 8%	45 11%	68 16%	20 5%	10 2%	7 2%	6 1%	1 0%	2 0%	0 0%	0 0%
<b>Bayside Ancora</b>	194 100%	29 15%	15 8%	56 29%	74 38%	9 5%	4 2%	6 3%	1 1%	0 0%	0 0%	0 0%	0 0%	0 0%	0 0%	0 0%
<b>Bayside Total</b>	1,335 100%	97 7%	71 5%	266 20%	337 25%	125 9%	143 11%	156 12%	52 4%	35 3%	24 2%	10 1%	8 1%	8 1%	2 0%	1 0%
<b>CRAF Jones Farm</b>	67 100%	22 33%	12 18%	23 34%	3 4%	1 1%	0 0%	6 9%	0 0%	0 0%	0 0%	0 0%	0 0%	0 0%	0 0%	0 0%
<b>CRAF Reception</b>	413 100%	78 19%	36 9%	85 21%	80 19%	40 10%	31 8%	34 8%	7 2%	10 2%	2 0%	3 1%	4 1%	0 0%	3 1%	0 0%
<b>CRAF Total</b>	480 100%	100 21%	48 10%	108 23%	83 17%	41 9%	31 6%	40 8%	7 1%	10 2%	2 0%	3 1%	4 1%	0 0%	3 1%	0 0%
<b>East Jersey Main</b>	1,189 100%	12 1%	14 1%	44 4%	58 5%	68 6%	116 10%	161 14%	95 8%	162 14%	93 8%	80 7%	52 4%	58 5%	139 12%	37 3%
<b>East Jersey Camp</b>	75 100%	7 9%	4 5%	18 24%	9 12%	5 7%	15 20%	6 8%	4 5%	3 4%	3 4%	1 1%	0 0%	0 0%	0 0%	0 0%
<b>East Jersey Marlboro</b>	23 100%	5 22%	1 4%	6 26%	4 17%	2 9%	2 9%	3 13%	0 0%	0 0%	0 0%	0 0%	0 0%	0 0%	0 0%	0 0%
<b>East Jersey Ad Seg</b>	294 100%	20 7%	15 5%	41 14%	55 19%	23 8%	31 11%	31 11%	20 7%	15 5%	9 3%	6 2%	7 2%	4 1%	12 4%	5 2%
<b>East Jersey Total</b>	1,581 100%	44 3%	34 2%	109 7%	126 8%	98 6%	164 10%	201 13%	119 8%	180 11%	105 7%	87 6%	59 4%	62 4%	151 10%	42 3%

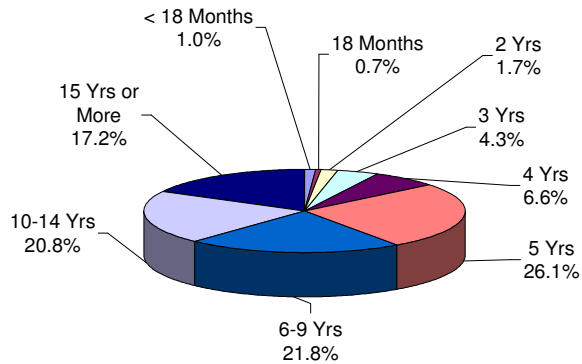
### Prison Complex Offenders on January 12, 2004, By Mandatory Minimum Term

Institution	Total	< 18 Months	18 Months	2 Years	3 Years	4 Years	5 Years	6-9 Years	10 Years	11-14 Years	15 Years	16-19 Years	20-24 Years	25-29 Years	30 Years	30+ Years
Midstate	241 100%	17 7%	16 7%	70 29%	69 29%	29 12%	19 8%	20 8%	1 0%	0 0%	0 0%	0 0%	0 0%	0 0%	0 0%	0 0%
NJ State Prison Ad Seg Female	15 100%	2 0%	1 0%	4 0%	2 0%	1 0%	3 0%	0 0%	0 0%	2 0%	0 0%	0 0%	0 0%	0 0%	0 0%	0 0%
NJ State Prison Main	1,579 100%	12 1%	14 1%	41 3%	45 3%	33 2%	44 3%	74 5%	39 2%	40 3%	51 3%	63 4%	107 7%	148 9%	461 29%	407 26%
NJ State Prison Total	1,594 100%	14 1%	15 1%	45 3%	47 3%	34 2%	47 3%	74 5%	39 2%	42 3%	51 3%	63 4%	107 7%	148 9%	461 29%	407 26%
Northern Main	1,428 100%	64 4%	56 4%	175 12%	262 18%	124 9%	183 13%	213 15%	67 5%	113 8%	47 3%	49 3%	22 2%	9 1%	29 2%	15 1%
Northern Ad Seg Male	401 100%	11 3%	21 5%	46 11%	78 19%	34 8%	44 11%	59 15%	39 10%	24 6%	16 4%	2 0%	12 3%	2 0%	12 3%	1 0%
Northern Total	1,829 100%	75 4%	77 4%	221 12%	340 19%	158 9%	227 12%	272 15%	106 6%	137 7%	63 3%	51 3%	34 2%	11 1%	41 2%	16 1%
Riverfront	800 100%	17 2%	30 4%	99 12%	144 18%	100 13%	122 15%	126 16%	59 7%	34 4%	25 3%	9 1%	12 2%	9 1%	9 1%	5 1%
Southern	1,149 100%	93 8%	70 6%	295 26%	320 28%	98 9%	114 10%	95 8%	32 3%	13 1%	7 1%	3 0%	4 0%	2 0%	2 0%	1 0%
South Woods	2,039 100%	115 6%	102 5%	263 13%	310 15%	173 8%	246 12%	341 17%	100 5%	148 7%	83 4%	58 3%	39 2%	20 1%	28 1%	13 1%
<b>SUBTOTAL PRISON MALES</b>	<b>11,048 100%</b>	<b>572 5%</b>	<b>463 4%</b>	<b>1,476 13%</b>	<b>1,776 16%</b>	<b>856 8%</b>	<b>1,113 10%</b>	<b>1,325 12%</b>	<b>515 5%</b>	<b>599 5%</b>	<b>360 3%</b>	<b>284 3%</b>	<b>267 2%</b>	<b>260 2%</b>	<b>697 6%</b>	<b>485 4%</b>

## Prison Complex Offenders on January 12, 2004, By Mandatory Minimum Term

Institution	Total	< 18 Months	18 Months	2 Years	3 Years	4 Years	5 Years	6-9 Years	10 Years	11-14 Years	15 Years	16-19 Years	20-24 Years	25-29 Years	30 Years	30+ Years
ADTC	303 100%	3 1%	2 1%	5 2%	13 4%	20 7%	79 26%	66 22%	43 14%	20 7%	30 10%	5 2%	6 2%	6 2%	3 1%	2 1%
<b>Subtotal</b>	<b>11,351</b> <b>100%</b>	<b>575</b> <b>5%</b>	<b>465</b> <b>4%</b>	<b>1,481</b> <b>13%</b>	<b>1,789</b> <b>16%</b>	<b>876</b> <b>8%</b>	<b>1,192</b> <b>11%</b>	<b>1,391</b> <b>12%</b>	<b>558</b> <b>5%</b>	<b>619</b> <b>5%</b>	<b>390</b> <b>3%</b>	<b>289</b> <b>3%</b>	<b>273</b> <b>2%</b>	<b>266</b> <b>2%</b>	<b>700</b> <b>6%</b>	<b>487</b> <b>4%</b>
Mahan - Female Prison	593 100%	63 11%	26 4%	91 15%	100 17%	50 8%	81 14%	65 11%	21 4%	22 4%	17 3%	11 2%	8 1%	4 1%	27 5%	7 1%
<b>Total Prison Complex</b>	<b>11,944</b> <b>100%</b>	<b>638</b> <b>5%</b>	<b>491</b> <b>4%</b>	<b>1,572</b> <b>13%</b>	<b>1,889</b> <b>16%</b>	<b>926</b> <b>8%</b>	<b>1,273</b> <b>11%</b>	<b>1,456</b> <b>12%</b>	<b>579</b> <b>5%</b>	<b>641</b> <b>5%</b>	<b>407</b> <b>3%</b>	<b>300</b> <b>3%</b>	<b>281</b> <b>2%</b>	<b>270</b> <b>2%</b>	<b>727</b> <b>6%</b>	<b>494</b> <b>4%</b>

**ADTC**

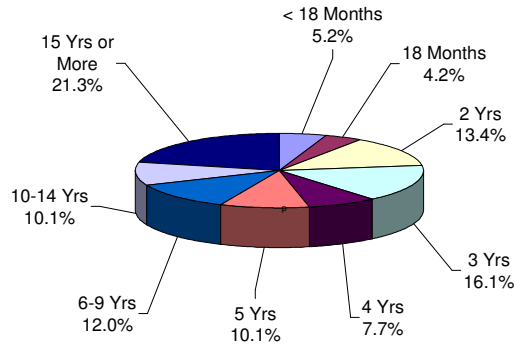


The median mandatory minimum term at ADTC is 7 years 6 months.

Forty-five percent (45%) of the ADTC population have mandatory minimum sentences (303 of 677).

Thirty-eight percent (38%) have mandatory minimum terms of 10 years or longer.

**PRISON MALES**

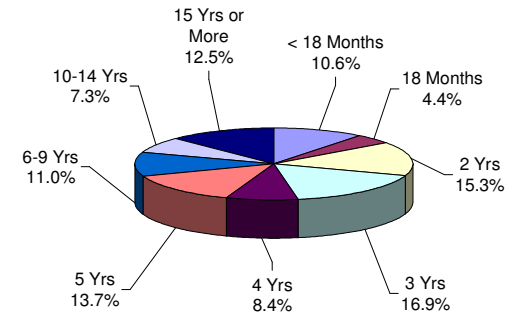


Of the 16,947 prison complex males, 65% (11,048) have mandatory minimum terms.

The median mandatory minimum term for prison complex males is 5 years (ADTC excluded).

Eighty-three percent (83%) of New Jersey State Prison inmates have mandatory minimum terms and 78% percent of those have minimum terms of 15 years or more.

**FEMALE FACILITIES**



The median mandatory minimum term at Edna Mahan is 4 years.

At Edna Mahan, 52% of the females housed have minimum terms (593 of 1,147).

Sixty-nine percent (69%) of the females with mandatory minimum terms have terms of 5 years or less.

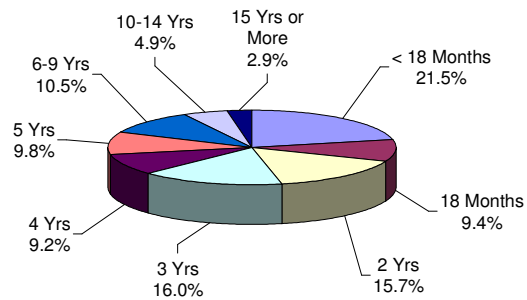
### Youth Complex Offenders on January 12, 2004, By Mandatory Minimum Term

Institution	Total	< 18 Months	18 Months	2 Years	3 Years	4 Years	5 Years	6-9 Years	10 Years	11-14 Years	15 Years	16-19 Years	20-24 Years	25-29 Years	30 Years	30+ Years
<b>Garden State</b>	1,117	187	117	175	159	91	110	125	33	45	16	23	11	6	16	3
	100%	17%	10%	16%	14%	8%	10%	11%	3%	4%	1%	2%	1%	1%	1%	0%
<b>Mountainview Main</b>	691	212	75	136	135	68	37	25	2	0	1	0	0	0	0	0
	100%	31%	11%	20%	20%	10%	5%	4%	0%	0%	0%	0%	0%	0%	0%	0%
<b>Mountainview Stokes</b>	62	27	5	16	10	2	0	2	0	0	0	0	0	0	0	0
	100%	44%	8%	26%	16%	3%	0%	3%	0%	0%	0%	0%	0%	0%	0%	0%
<b>Mountainview Total</b>	753	239	80	152	145	70	37	27	2	0	1	0	0	0	0	0
	100%	32%	11%	20%	19%	9%	5%	4%	0%	0%	0%	0%	0%	0%	0%	0%
<b>Wagner Main</b>	716	101	45	97	123	76	106	120	25	20	3	0	0	0	0	0
	100%	14%	6%	14%	17%	11%	15%	17%	3%	3%	0%	0%	0%	0%	0%	0%
<b>Wagner Ad Seg</b>	157	30	11	15	22	21	23	21	3	10	0	1	0	0	0	0
	100%	19%	7%	10%	14%	13%	15%	13%	2%	6%	0%	1%	0%	0%	0%	0%
<b>Wagner Adult Boot Camp</b>	62	47	12	2	0	0	0	1	0	0	0	0	0	0	0	0
	100%	76%	19%	3%	0%	0%	0%	2%	0%	0%	0%	0%	0%	0%	0%	0%
<b>Wagner Total</b>	935	178	68	114	145	97	129	142	28	30	3	1	0	0	0	0
	100%	19%	7%	12%	16%	10%	14%	15%	3%	3%	0%	0%	0%	0%	0%	0%
<b>Total Youth</b>	<b>2,805</b>	<b>604</b>	<b>265</b>	<b>441</b>	<b>449</b>	<b>258</b>	<b>276</b>	<b>294</b>	<b>63</b>	<b>75</b>	<b>20</b>	<b>24</b>	<b>11</b>	<b>6</b>	<b>16</b>	<b>3</b>
	<b>100%</b>	<b>22%</b>	<b>9%</b>	<b>16%</b>	<b>16%</b>	<b>9%</b>	<b>10%</b>	<b>10%</b>	<b>2%</b>	<b>3%</b>	<b>1%</b>	<b>1%</b>	<b>0%</b>	<b>0%</b>	<b>1%</b>	<b>0%</b>

## Offenders In Other Facilities on January 12, 2004, By Mandatory Minimum Term

Institution	Total	< 18 Months	18 Months	2 Years	3 Years	4 Years	5 Years	6-9 Years	10 Years	11-14 Years	15 Years	16-19 Years	20-24 Years	25-29 Years	30 Years	30+ Years
Central Medical	7 100%	0 0%	1 14%	0 0%	2 29%	0 0%	1 14%	0 0%	1 14%	0 0%	0 0%	1 14%	0 0%	0 0%	1 14%	0 0%
County Jail	175 100%	39 22%	19 11%	38 22%	33 19%	15 9%	12 7%	13 7%	3 2%	1 1%	1 1%	1 1%	0 0%	0 0%	0 0%	0 0%
EM/HC	53 100%	16 30%	7 13%	13 25%	10 19%	1 2%	2 4%	3 6%	0 0%	0 0%	0 0%	1 2%	0 0%	0 0%	0 0%	0 0%
Halfway House	1,762 100%	207 12%	141 8%	444 25%	549 31%	136 8%	126 7%	105 6%	27 2%	14 1%	8 0%	1 0%	4 0%	0 0%	0 0%	0 0%
<b>Total Other Facilities</b>	<b>1,997 100%</b>	<b>262 13%</b>	<b>168 8%</b>	<b>495 25%</b>	<b>594 30%</b>	<b>152 8%</b>	<b>141 7%</b>	<b>121 6%</b>	<b>31 2%</b>	<b>15 1%</b>	<b>9 0%</b>	<b>4 0%</b>	<b>4 0%</b>	<b>0 0%</b>	<b>1 0%</b>	<b>0 0%</b>

### YOUTH COMPLEX

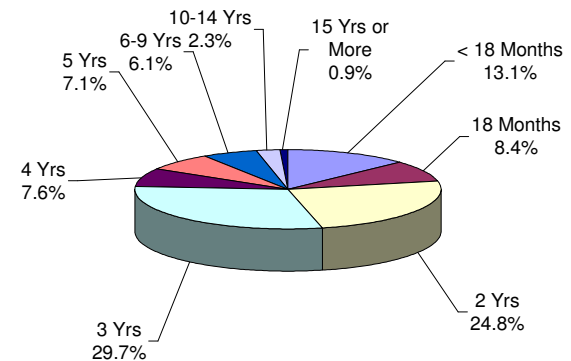


The median mandatory minimum term for youth complex offenders is 3 years.

Among youth complex offenders, 64% have mandatory minimum terms (**2,805** of 4,347).

Of these, 82% have mandatory minimum terms of 5 years or less.

### OFFENDERS IN OTHER FACILITIES



The median mandatory minimum term for inmates in 'other facilities' is 3 years.

Fifty-eight percent (58%) of the offenders in 'other facilities' have mandatory minimum terms (**1,997** of 3,463).

Of these, 91% have mandatory minimum terms of 5 years or less.