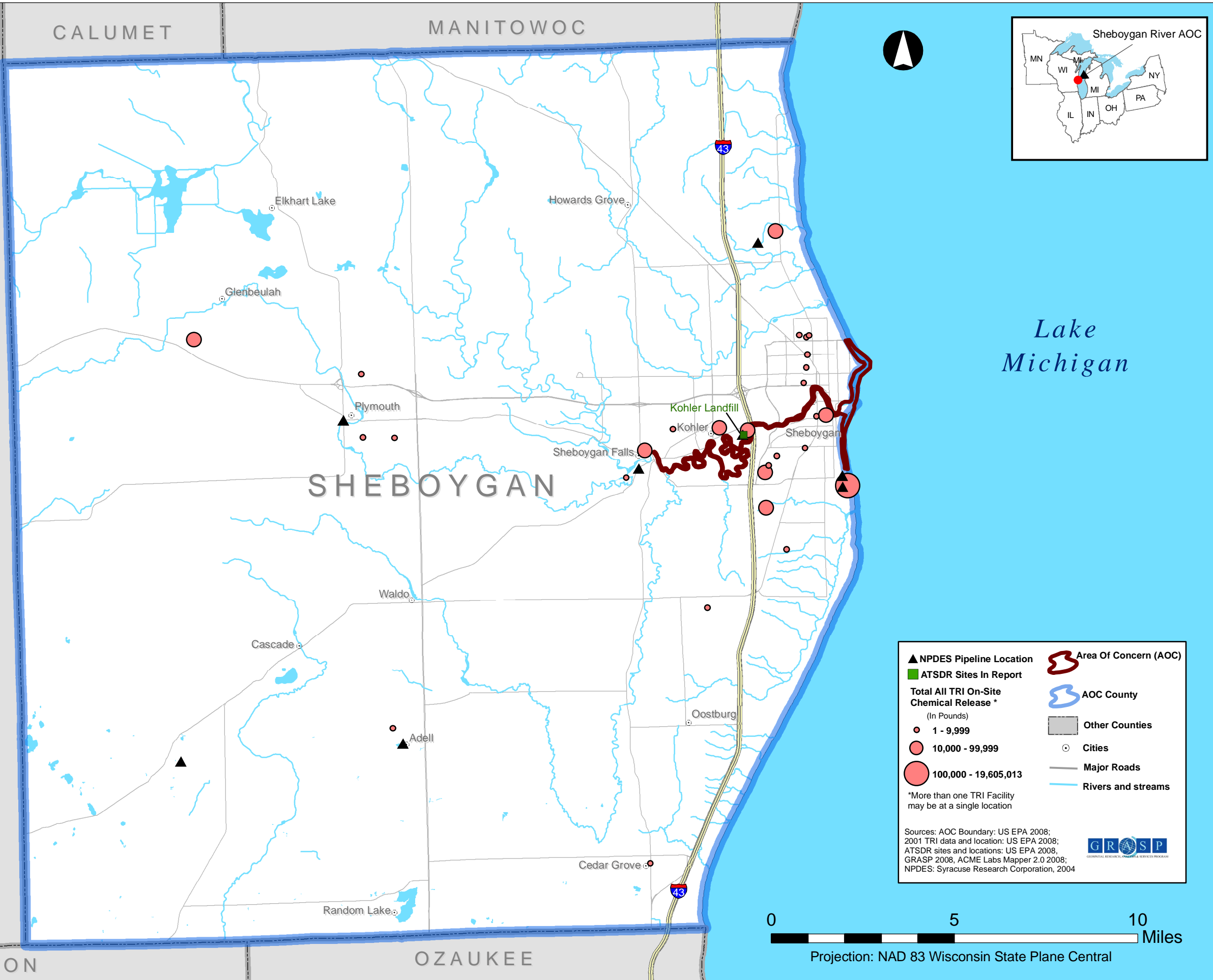


Great Lakes
Areas of Concern

Sheboygan River
Area of Concern



▲ NPDES Pipeline Location
 ■ ATSDR Sites In Report
 Total All TRI On-Site Chemical Release *
 (In Pounds)
 ● 1 - 9,999
 ● 10,000 - 99,999
 ● 100,000 - 19,605,013
 *More than one TRI Facility may be at a single location

🔴 Area Of Concern (AOC)
 🟦 AOC County
 🟡 Other Counties
 ● Cities
 — Major Roads
 — Rivers and streams

Sources: AOC Boundary: US EPA 2008;
 2001 TRI data and location: US EPA 2008;
 ATSDR sites and locations: US EPA 2008;
 GRASP 2008, ACME Labs Mapper 2.0 2008;
 NPDES: Syracuse Research Corporation, 2004



Projection: NAD 83 Wisconsin State Plane Central