



# IRS PRIME

---

**BearingPoint and Small Businesses**

**An Opportunity for Success**

**BearingPoint means setting direction to an end point.**

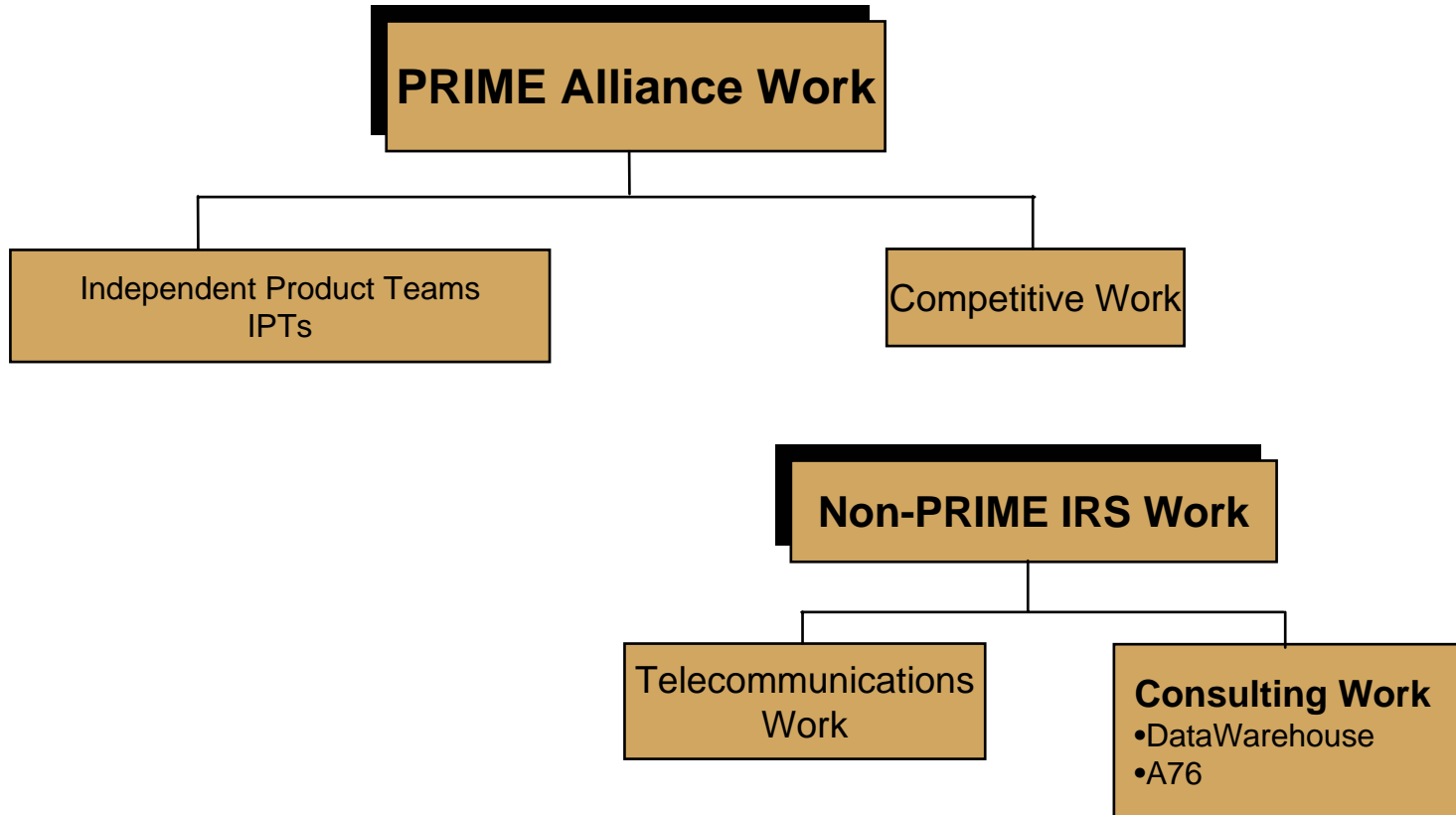
As business systems integrators, we align business processes and systems in order to achieve end results. We help our clients access the right information at the right time, **EMPOWERING** them to create enterprise value.

## Our Business Model – Delivering Value Through Industry-Tailored Solutions



		INDUSTRIES				
		Financial Services	Consumer & Industrial Markets	Public Services	High Technology	Communications & Content
SOLUTIONS		Strategy, Transformation, & Operations				
		Customer Relationship Management				
		Supply Chain Management				
		Enterprise				
		Integration Services				
		Infrastructure				
		Emerging Technology				
		Managed Services				

**BearingPoint means setting direction to an end point.**



**BearingPoint means setting direction to an end point.**

## •DEPARTMENT OF TREASURY MENTOR PROTÉGÉ PROGRAM

•**BearingPoint was Awarded Mentor Protégé Team of the Year for 2002 from the Department of Treasury Mentor Protégé Program**

•**Have Formalized Process of Identification and Selection for Protégé**

### •**Selection Process Requires:**

- Company has clear vision for future goals and growth
- Skill sets supplement/complement IRS Team
- Mutually beneficial to both companies
- Opportunities exist to work together
- Company is financially stable

**BearingPoint means setting direction to an end point.**



**Linda J. Glasgow**

**Managing Director**

**Email: lglasgow@bearingpoint.net**



**Joan Thompson**  
**(301)429-6200**

**Admin Assistant**

**Email: jthompson@bearingpoint.net**



**Rebecca Kehoe**  
**(301)429-6248**

**Sr. Contracts Consultant**

**Email: rkehoe@bearingpoint.net**



**William Keating**  
**(703) 747-3052**

**Director of Federal Contracts**

**Email: wkeating@bearingpoint.net**