

Summary of Water Supply Conditions as of 05/31/05

(Click on hyperlinks to view information graphically.)

Precipitation for the month of May averages 2.17 inches on the Northern Sierra 8-Station Index, and as of this date, we have received 8.12 inches which is the wettest May since 1920. In 1998, we received 7.47 inches. The cumulative total is now 53.27 inches which is 106% of the water year average of 50 inches and 111% of the average for this date.

Trinity River at the fish hatchery totals 33.96 inches or 109% of average. The Sacramento River at Shasta Dam totals 65.76 inches or 108% of average. The American River at Blue Canyon totals 71.06 inches or 114% of average. The Stanislaus River at New Melones totals 39.86 inches or 153% of average.

Reservoir Storage is 115% of average for the CVP reservoirs. Trinity is at 103% of its 15-year average and Shasta storage is 114% of its 15-year average. Folsom Reservoir is at 124% of its 15-year average, while New Melones was at 129% of its 15-year average.

River Releases at Lewiston releases were 251% of their 15-year median while Keswick releases were at 118% of their 15-year median. On the American, releases were 482% percent of their median and on the Stanislaus they were at 46% of their 15-year median.

Shasta has been operating for temperature control, but cooler temperatures are expected, so releases at Keswick are likely to drop. Early snowmelt is still affecting Folsom Reservoir, where releases were increased again. The Trinity River level of flow depends upon the October through March inflow to Trinity Reservoir and the April through September forecasted inflow. The April through September inflow forecast is based upon April 1st conditions, which for both the 50% and 90% exceedence levels, the forecasts are “normal” this year. Trinity Powerplant capacity was exceeded May 6th through May 20th.

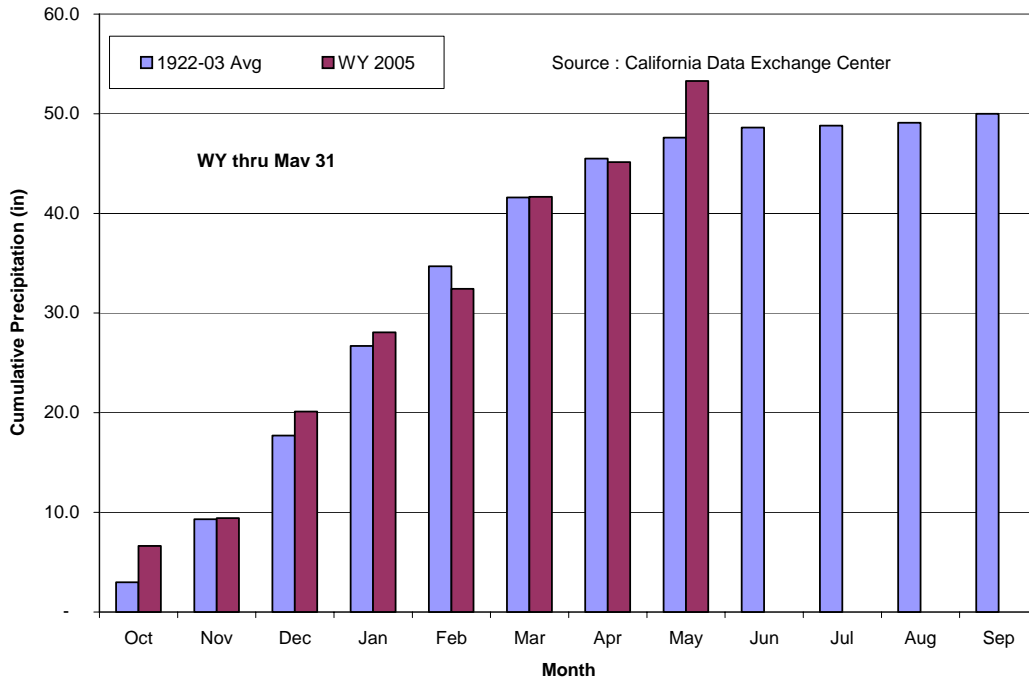
Water Supply indices based upon May 1st conditions were posted on May 9th. Thus, they did not include the recent record precipitation that occurred this month. The 50% exceedence forecast was projected to be “below normal” at 15.7 million-acre-feet or 82% of the average of 19.1 while the 90% exceedence forecast was also projected to be “below normal” at 14.8 million-acre-feet or 78% of the average. As stated above, the Trinity water year type is “normal” for both the 50% and 90% exceedence levels. Even the San Joaquin River 60-20-20 index is “wet” for both these exceedence levels.

		05/31/05	04/30/05	Change
8 Station Index	(% of WY Avg to Date)	106%	90%	16%
Snow Pack - (Percent of April 1 Average)	North	45%	103%	-58%
	Central	80%	121%	-41%
		05/31/05	04/30/05	Change
Reservoir Storage - (Thousand AF)	Trinity	2,102	1,969	133
	Shasta	4,468	4,207	261
	Folsom	959	830	129
	New Melones	1,872	1,678	194
	Federal San Luis	895	965	(70)
		05/31/05	04/30/05	Change
River Releases - (Mean Daily cfs)	Trinity	2,507	2,325	182
	Sacramento	12,971	5,090	7,881
	American	12,042	4,040	8,002
	Stanislaus	1,340	1,504	(164)
		05/31/05	04/30/05	Change
Reservoir Inflow - (WY to Date in TAF)	Trinity	1,107	708	399
	Shasta	4,509	3,411	1,098
	Folsom	2,409	1,714	695
	New Melones	1,055	697	358
		05/31/05	04/30/05	Change
Precipitation (accumulated in.)	Trinity at Fish Hatchery	33.96	27.64	6.32
	Sacramento at Shasta Dam	65.76	55.15	10.61
	American at Blue Canyon	71.06	57.79	13.27
	Stanislaus at New Melones	39.86	36.87	2.99

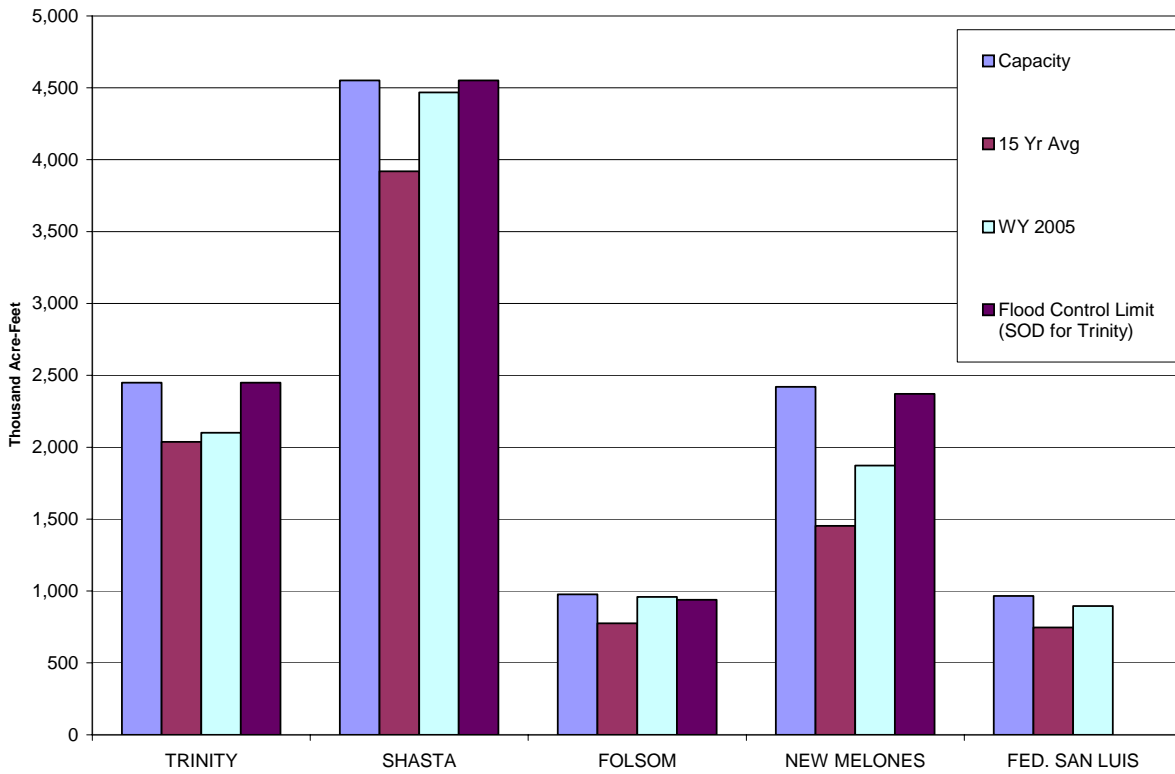
Precipitation

[Return to Summary](#)

Northern Sierra Eight Station Index
(Mt. Shasta City, Shasta Dam, Brush Creek, Mineral R.S., Quincy, Sierraville R.S., Blue Canyon, Pacific House)



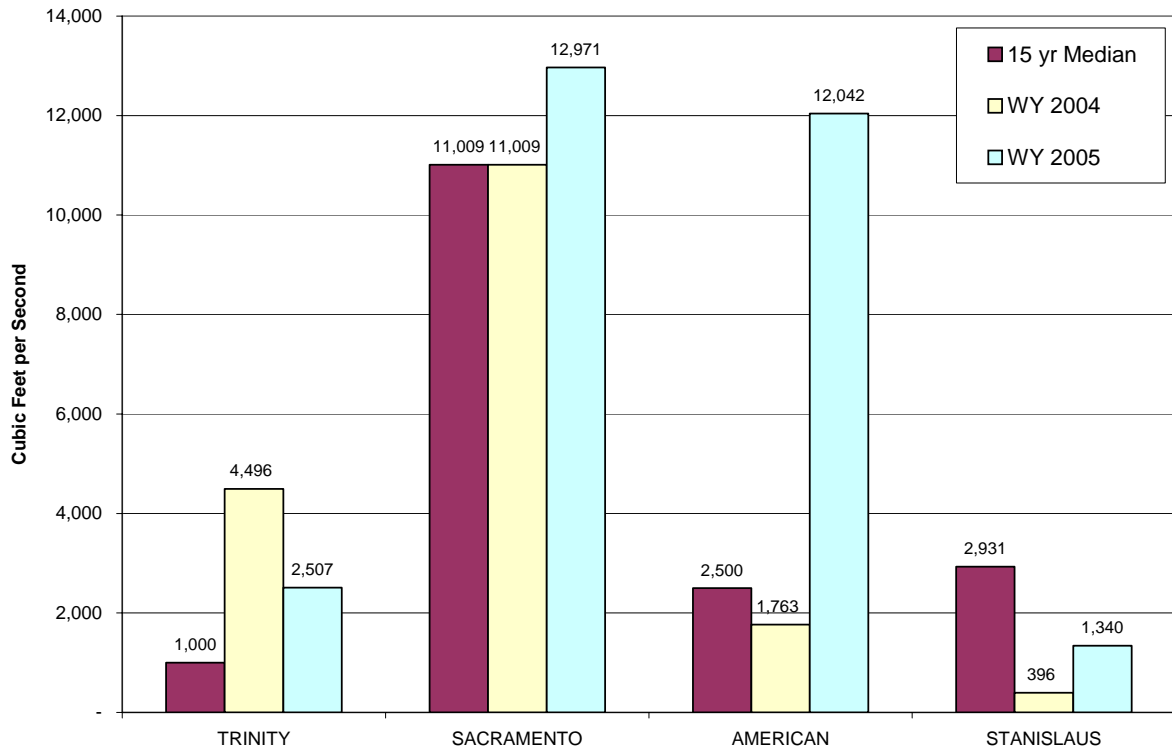
Reservoir Storage as of MAY 31, 2005 based on USBR Daily CVP Water Supply Report



River Releases

[Return to Summary](#)

Reservoir Releases as of MAY 31, 2005 based on USBR Daily CVP Water Supply Report



WY 2005 SACRAMENTO RIVER UNIMPAIRED RUNOFF (SACRAMENTO RIVER INDEX)

