

Summary of Water Supply Conditions as of 03/31/05

(Click on hyperlinks to view information graphically.)

Precipitation for the month of March averages approximately 6.7 inches and as of the 15th, we had only received 0.81 inches putting the cumulative total at 79% of the water-year-to-date average total and 66% of the historical average of 50 inches on the 8-Station Index. The lowest recorded March precipitation was 0.49 inches in 1926 while the highest was 22.85 inches in 1995. We ended March with 8.9 inches of precipitation for the month, 132% of monthly average. Cumulatively, March ended with the 8-Station Index at 99% of the cumulative-to-date average and 82% of water year-to-date total average. As of March 31st, the Northern Sierra snow pack was at 123% of the April 1st average and the Central Sierra snow pack was 134% of the April 1st average, which is assumed to be the peak of the season. This represents an increase of approximately 25% since mid-month.

Reservoir Storage at the end of March was close to average for the CVP reservoirs. Trinity is at 100% of its 15-year average and Shasta storage is 106% of its 15-year average. Folsom Reservoir was at 112% of its 15-year average, while New Melones was at 112% of its 15-year average.

As of March 15th, Folsom was already encroached by 42 thousand-acre-feet. A pulse flow had been discussed, but rejected. As forecasted conditions changed, Nimbus releases were increased, reaching 15,000 cfs by the 24th. As of March 31st, encroachment into SAFCA flood space was down to less than 4 thousand-acre-feet.

River Releases at Lewiston releases were 109% of their 15-year median while Shasta releases were at 84% of their 15-year median. On the American, releases were 250% percent of their median and on the Stanislaus they were at 41% of their 15-year median.

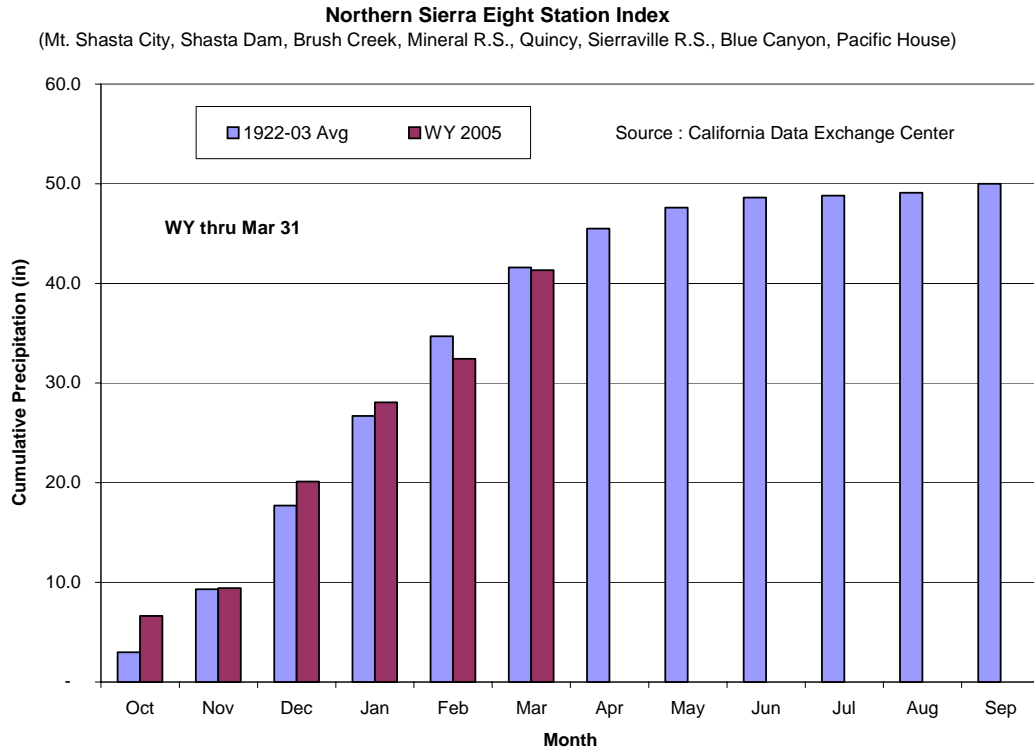
The Trinity River Flows will increase in late April. The level of flow depends upon the October through March inflow to Trinity Reservoir and the April through September forecasted inflow. The April through September inflow forecast is based upon April 1st conditions and should be available on April 8th.

Water Supply indices based upon April 1st conditions should be posted by April 8th. The March forecasts follow. The 50% exceedence forecast was projected to be “below normal” at 14.2 million-acre-feet or 75% of the average of 19.1 while the 90% exceedence forecast was projected to be “dry” at 11.3 million-acre-feet or 59% of the average.

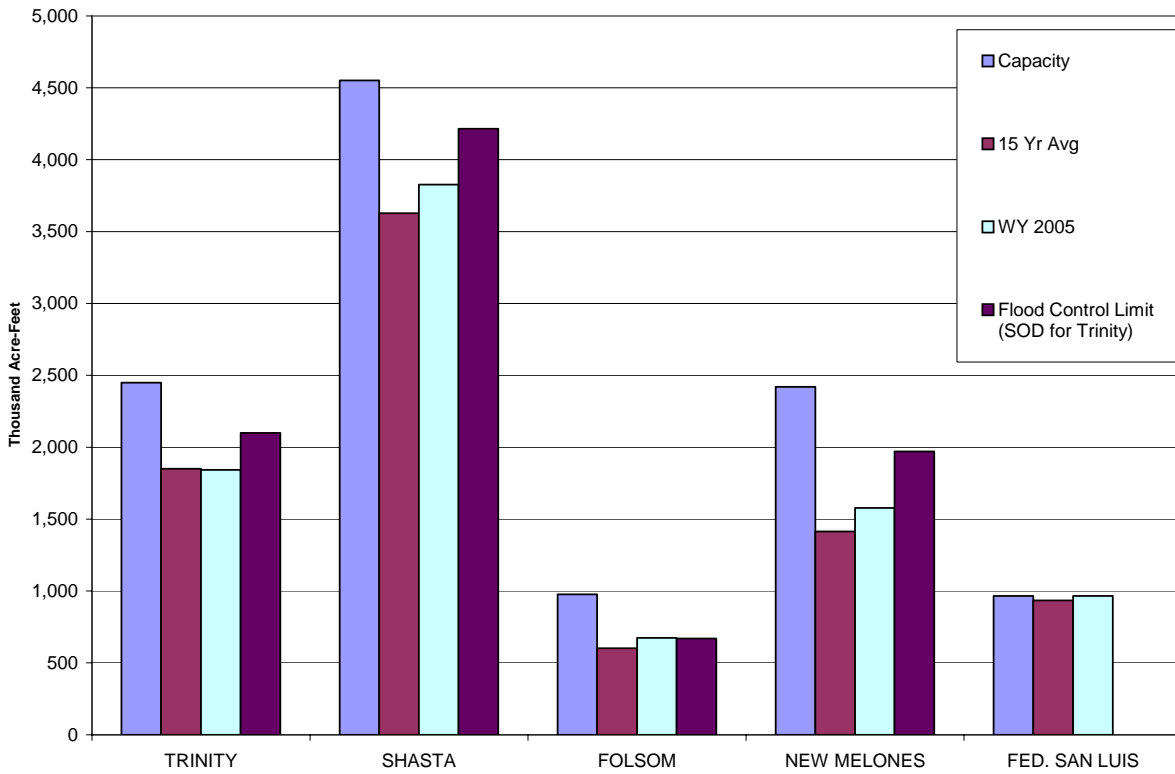
		03/31/05	03/14/05	Change
8 Station Index	(% of WY Avg to Date)	56%	51%	5%
Snow Pack -	North	123%	98%	25%
	Central	134%	105%	29%
		03/31/05	03/14/05	Change
Reservoir Storage - (Thousand AF)	Trinity	1,842	1,747	95
	Shasta	3,827	3,387	440
	Folsom	674	659	15
	New Melones	1,578	1,489	89
	Federal San Luis	966	950	16
		03/31/05	03/14/05	Change
River Releases - (Mean Daily cfs)	Trinity	326	299	27
	Sacramento	3,783	3,784	(1)
	American	8,239	3,777	4,462
	Stanislaus	229	228	1
		03/31/05	03/14/05	Change
Reservoir Inflow - (WY to Date in TAF)	Trinity	530	422	108
	Shasta	2,819	2,313	506
	Folsom	1,305	991	314
	New Melones	534	435	99
		03/31/05	03/14/05	Change
Precipitation (accumulated in.)	Trinity at Fish Hatchery	25.28	21.07	4.21
	Sacramento at Shasta Dam	51.91	42.36	9.55
	American at Blue Canyon	52.75	41.89	10.86
	Stanislaus at New Melones	34.94	29.52	5.42

Precipitation

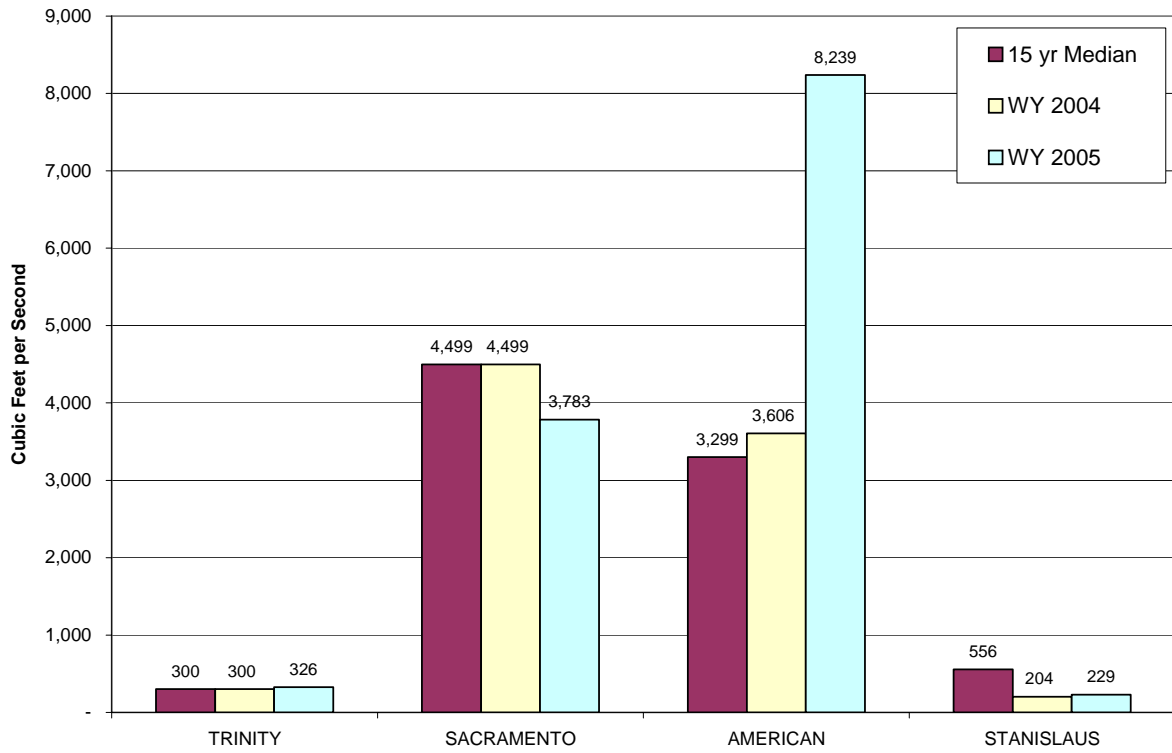
[Return to Summary](#)



Reservoir Storage as of MARCH 31, 2005 based on USBR Daily CVP Water Supply Report



Reservoir Releases as of MARCH 31, 2005 based on USBR Daily CVP Water Supply Report



WY 2005 SACRAMENTO RIVER UNIMPAIRED RUNOFF (SACRAMENTO RIVER INDEX)

