

Summary of Water Supply Conditions as of 02/14/05

(Click on hyperlinks to view information graphically.)

Precipitation for the month of February averages approximately 8 inches and halfway through the month, we have only received 1.17 inches or 82% of the average water year-to-date total and 57% of the historical average of 50 inches for the water year according to the 8-Station Index. The lowest recorded February precipitation was 0.46 inches in 1988 while the highest was 27.14 inches in 1986. As of February 14th, the Northern Sierra snow pack was at 93% of the April 1st average and the Central Sierra snow pack was 95% of the April 1st average, where April 1st is assumed to be the peak.

Reservoir Storage at the midpoint of February is close to average for the CVP reservoirs. Trinity is at 98% of its 15-year average and Shasta storage is 92% of its 15-year average. Folsom Reservoir was at 120% of its 15-year average, while New Melones was at 102% of its 15-year average.

The Safety of Dams Storage limit for Trinity in February is 2,000 thousand-acre-feet. As of February 14th, Shasta permissible storage was 3,918 thousand-acre-feet, while Folsom was 566 thousand-acre-feet and New Melones was 1,970 thousand-acre-feet. As the graph shows, most reservoirs were well below these levels. Only Folsom was encroaching into flood control space by nearly 26 thousand-acre-feet.

River Releases at Lewiston releases were 102% of their 15-year median while Shasta releases were at 92% of their 15-year median. On the American, releases were 100% percent of their median and on the Stanislaus they were at 73% of their 15-year median.

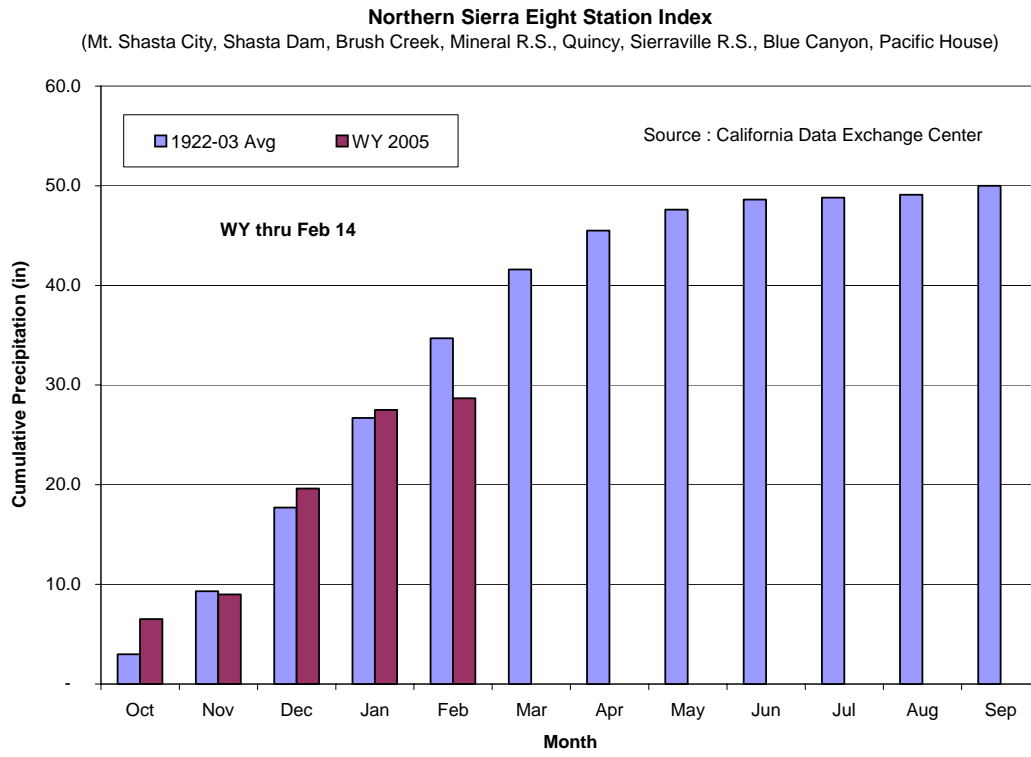
At Folsom, encroachment into flood space was allowed to reach 30 thousand-acre-feet and then pulse flows were scheduled for flood control and fishery management. Nimbus flows went from 2500 cfs on the 9th to a peak of 8000 cfs and are scheduled to return to 2500 cfs on the 16th. A storm system is currently in the area, and with encroachment at close to 26 thousand-acre-feet, it looks like another pulse flow could be scheduled for next week.

Water Supply indices based upon February 1st conditions were posted on the 8th. The 50% exceedence forecast is now projected to be “above normal” at 15.8 million-acre-feet or 83% of the average of 19.1 while the 90% exceedence forecast is projected to be “dry” at 11.4 million-acre-feet or 60% of the average of 19.1 million-acre-feet.

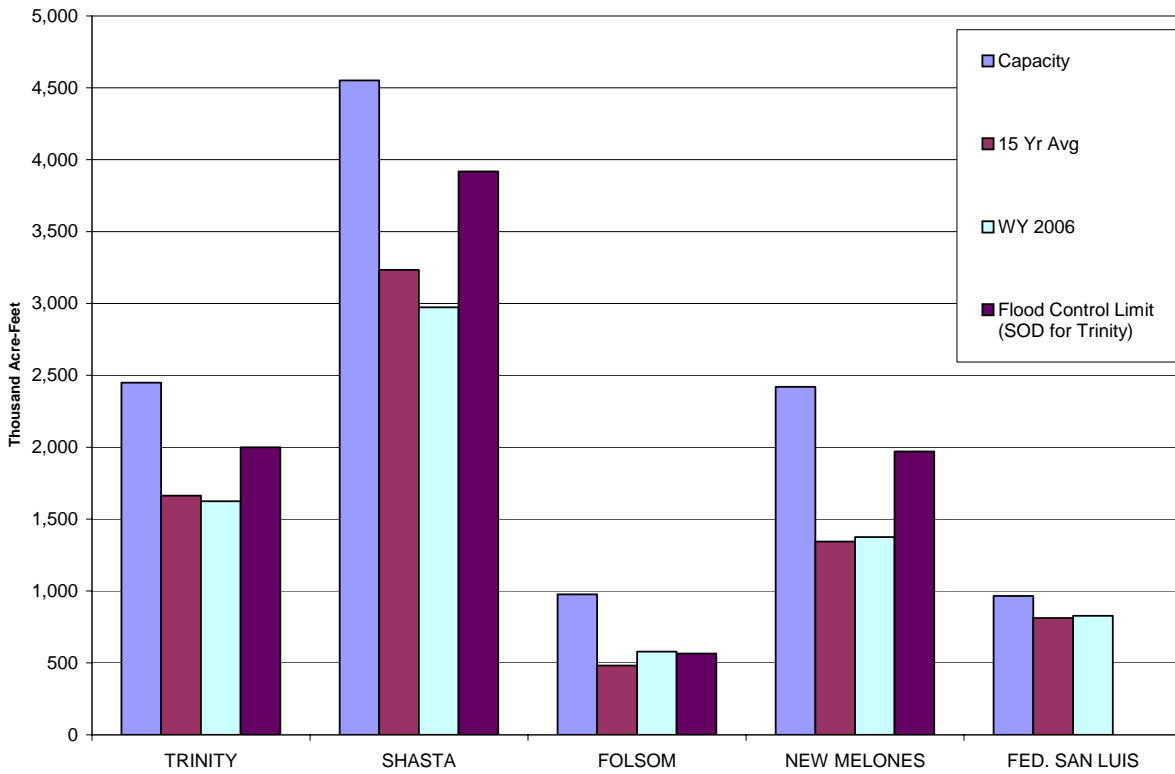
		02/14/05	01/31/05	Change
8 Station Index	(% of WY Avg to Date)	55%	50%	5%
Snow Pack -	North	93%	90%	3%
	Central	95%	93%	2%
		02/14/05	01/31/05	Change
Reservoir Storage - (Thousand AF)	Trinity	1,625	1,588	37
	Shasta	2,973	2,832	141
	Folsom	578	583	(5)
	New Melones	1,375	1,340	35
	Federal San Luis	827	797	30
		02/14/05	01/31/05	Change
River Releases - (Mean Daily cfs)	Trinity	305	310	(5)
	Sacramento	3,727	3,718	9
	American	3,464	1,499	1,965
	Stanislaus	226	227	(1)
		02/14/05	01/31/05	Change
Reservoir Inflow - (WY to Date in TAF)	Trinity	279	232	47
	Shasta	1,748	1,526	222
	Folsom	711	612	99
	New Melones	314	277	37
		02/14/05	01/31/05	Change
Precipitation (accumulated in.)	Trinity at Fish Hatchery	18.23	17.46	0.77
	Sacramento at Shasta Dam	36.83	35.56	1.27
	American at Blue Canyon	37.59	33.82	3.77
	Stanislaus at New Melones	24.64	24.22	0.42

Precipitation

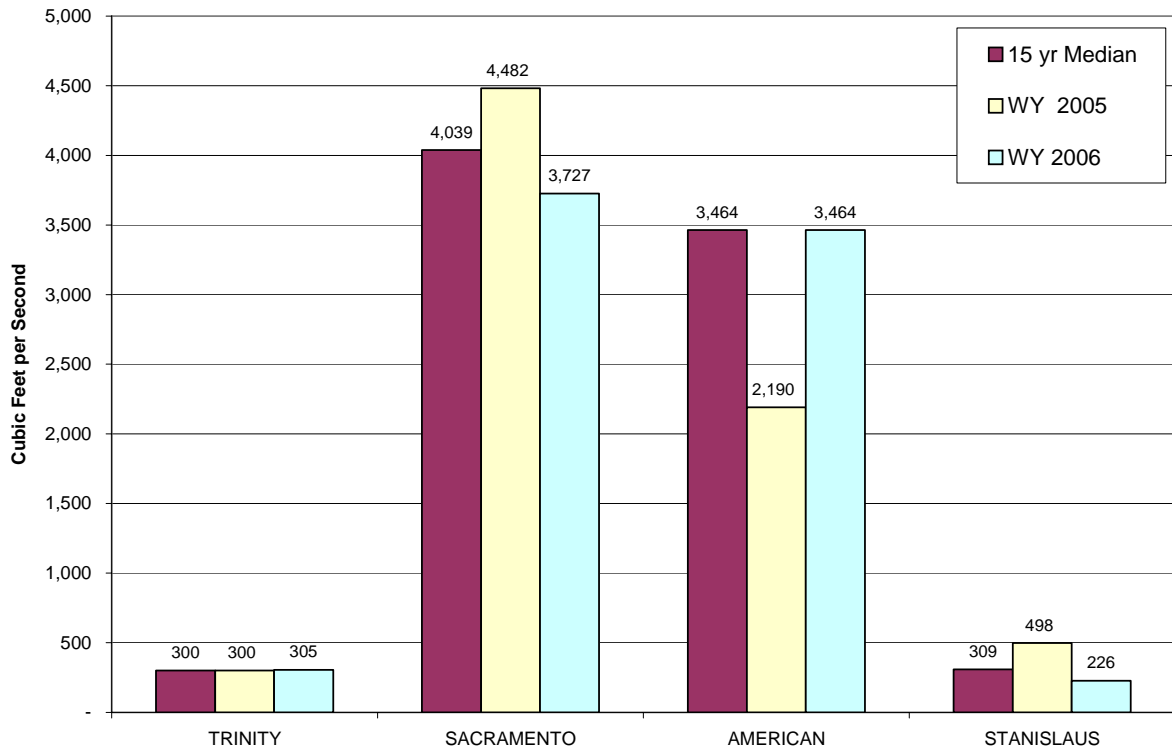
[Return to Summary](#)



Reservoir Storage as of FEBRUARY 14, 2005 based on USBR Daily CVP Water Supply Report



Reservoir Releases as of FEBRUARY 14, 2005 based on USBR Daily CVP Water Supply Report



WY 2005 SACRAMENTO RIVER UNIMPAIRED RUNOFF (SACRAMENTO RIVER INDEX)

