

Summary of Water Supply Conditions as of 08/31/05

(Click on hyperlinks to view information graphically.)

Precipitation for the month of August averages 0.28 inches. The wettest August occurred in 1976 when 2.91 inches fell. During 1931 through 1933, there was no recorded precipitation for the month of August.

Reservoir Storage is 123% of average for the CVP reservoirs. Trinity is at 116% of its 15-year average and Shasta storage is 115% of its 15-year average. Folsom Reservoir is at 131% of its 15-year average, while New Melones was at 145% of its 15-year average.

River Releases at Lewiston releases were 106% of their 15-year median while Keswick releases were at 107% of their 15-year median. On the American, releases were 78% percent of their median and on the Stanislaus they were at 14% of their 15-year median.

Releases on the Trinity River, return to 450 cfs after ramping up to 1,650 cfs for ceremonial use by the Hoopa Tribe. Releases to the Sacramento River, will be dropping down to 8,500 cfs by September 5th. The Stanislaus River release is currently operating to the Dissolved Oxygen standard at Ripon.

Water Supply indices based upon May 1st conditions were posted on May 9th. Thus, they did not include the recent record precipitation that occurred this month. The 50% exceedence forecast was projected to be “below normal” at 15.7 million-acre-feet or 82% of the average of 19.1 while the 90% exceedence forecast was also projected to be “below normal” at 14.8 million-acre-feet or 78% of the average. As stated above, the Trinity water year type is “normal” for both the 50% and 90% exceedence levels. Even the San Joaquin River 60-20-20 index is “wet” for both these exceedence levels.

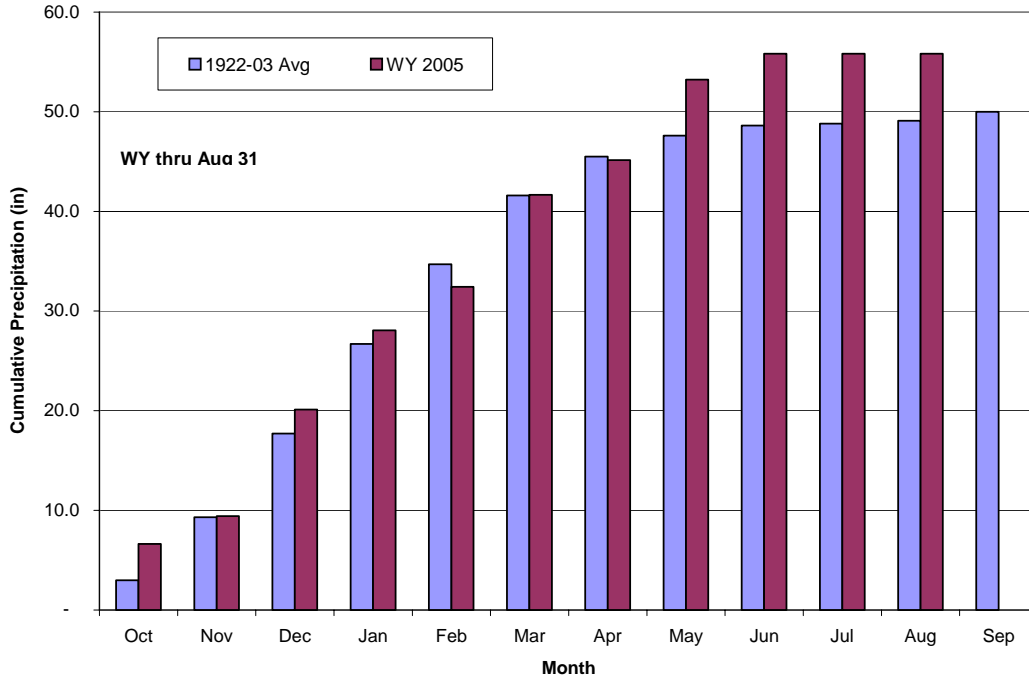
		08/31/05	07/31/05	Change
8 Station Index	(% of WY Avg to Date)	111%	111%	0%
Snow Pack -	North	N/A	N/A	N/A
	Central	N/A	N/A	N/A
		08/31/05	07/31/05	Change
Reservoir Storage - (Thousand AF)	Trinity	1,995	2,098	(103)
	Shasta	3,272	3,639	(367)
	Folsom	743	847	(104)
	New Melones	1,965	2,027	(62)
	Federal San Luis	378	570	(192)
		08/31/05	07/31/05	Change
River Releases - (Mean Daily cfs)	Trinity	479	472	7
	Sacramento	9,557	12,747	(3,190)
	American	3,112	3,508	(396)
	Stanislaus	276	251	25
		08/31/05	07/31/05	Change
Reservoir Inflow - (WY to Date in TAF)	Trinity	1,406	1,391	15
	Shasta	5,436	5,214	222
	Folsom	3,113	2,997	116
	New Melones	1,518	1,455	63
		08/31/05	07/31/05	Change
Precipitation (accumulated in.)	Trinity at Fish Hatchery	37.20	37.20	-
	Sacramento at Shasta Dam	67.68	67.68	-
	American at Blue Canyon	74.85	74.85	-
	Stanislaus at New Melones	40.15	40.15	-

Precipitation

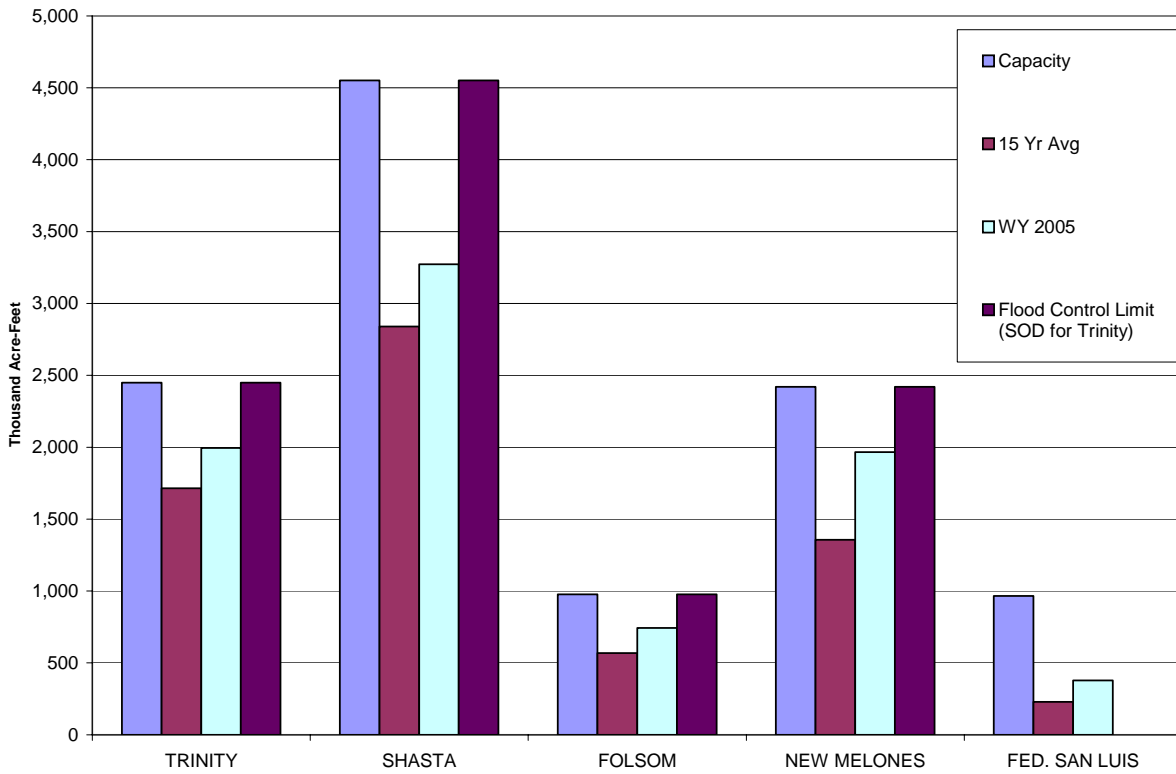
[Return to Summary](#)

Northern Sierra Eight Station Index
Mt Shasta City, Shasta Dam, Mineral, Brush Creek RS
Quincy, Sierraville RS, Pacific House, Blue Canyon

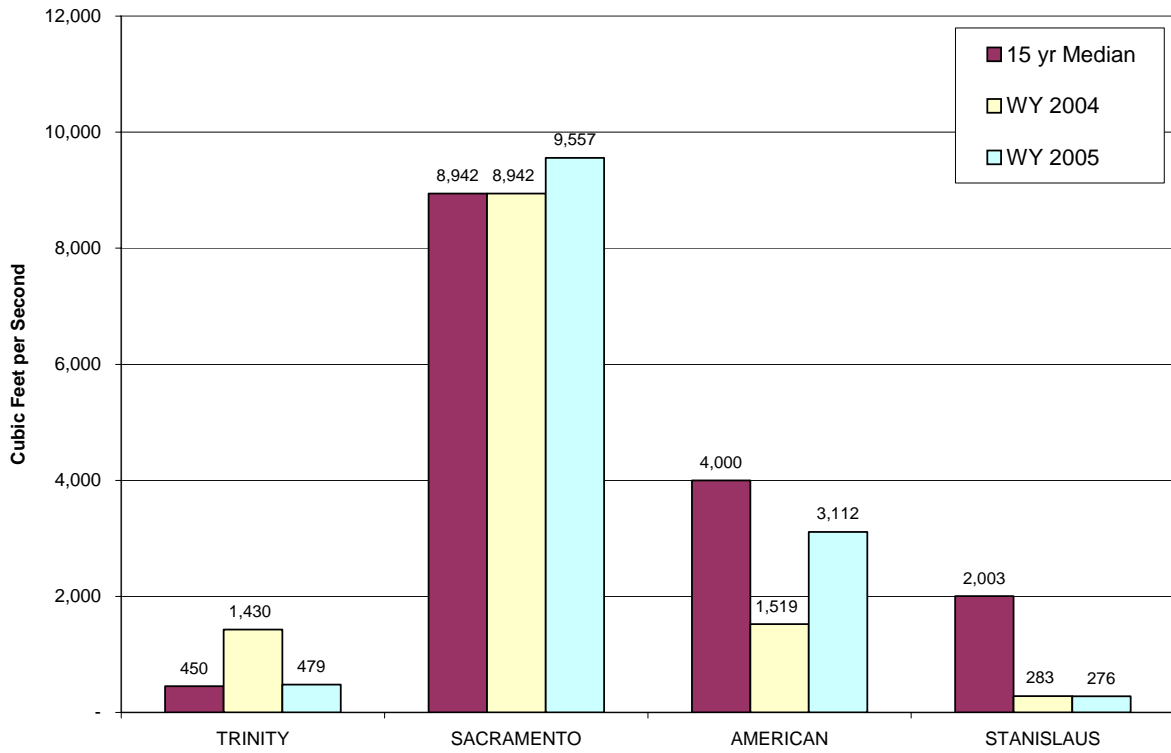
Source: California Data Exchange Center



Reservoir Storage as of AUGUST 31, 2005 based on USBR Daily CVP Water Supply Report



Reservoir Releases as of AUGUST 31, 2005 based on USBR Daily CVP Water Supply Report



WY 2005 SACRAMENTO RIVER UNIMPAIRED RUNOFF (SACRAMENTO RIVER INDEX)

